

INSTYTUT ARCHEOLOGII I ETNOLOGII
POLSKA AKADEMIA NAUK
ODDZIAŁ WE WROCŁAWIU

PRZEGLĄD ARCHEOLOGICZNY

TOM 41



For the exchange write please to
Instytut Archeologii i Etnologii PAN
Oddział we Wrocławiu
ul. Więzienna 6, 50-118 Wrocław, Poland

Orders regarding all publications of the Institute of Archaeology and Ethnology should be addressed to the Institute of Archaeology and Ethnology, Polish Academy of Sciences, Al. Solidarności 105, 00-140 Warszawa, Poland, fax 48-22-240100 Warsaw.

The subscription rates for periodicals are (in USD or equivalent):

ARCHEOLOGIA	30
ARCHAEOLOGIA POLONA	25
ARCHEOLOGIA POLSKI	40 (2 vols)
ETHNOLOGIA POLONA	30
ETNOGRAFIA POLSKI	40 (2 vols)
KWARTALNIK HISTORII KULTURY MATERIALNEJ	40 (4 vols)
POLISH ARCHAEOLOGICAL ABSTRACTS	20
PRZEGLĄD ARCHEOLOGICZNY	30
SPRAWOZDANIA ARCHEOLOGICZNE	25

For all non European countries plus postage (USD 3)

Payment must be made by International Money Order sent to PBK VIII O/Warszawa Nr 370028-4499 or by check payable to Instytut Archeologii i Etnologii PAN, Al. Solidarności 105, 00-140 Warszawa, Poland.

Rocznik 1 tomu I Przeglądu Archeologicznego wydała w 1919 roku
Komisja Archeologiczna Towarzystwa Przyjaciół Nauk w Poznaniu

CZYTELNIA

Nie wypożycza się

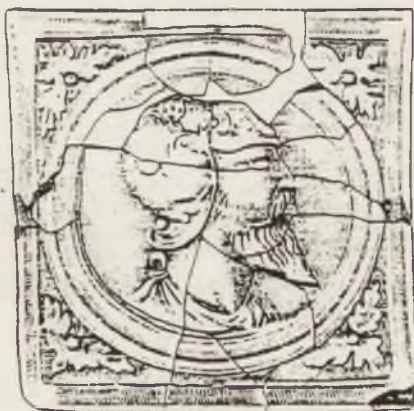
INSTYTUT ARCHEOLOGII I ETNOLOGII
POLSKA AKADEMIA NAUK
ODDZIAŁ WE WROCŁAWIU

PRZEGLĄD ARCHEOLOGICZNY

TOM 41



P III 149



WROCŁAW 1993

Alko. 88/94ol.

1994.05.09

Redaktor – Editor
BOGUSŁAW GEDIGA

Sekretarz Redakcji – Editorial secretary
SŁAWOMIR MOŹDZIOCH

Członkowie Komitetu Redakcyjnego – Editorial Committee members
GRZEGORZ DOMAŃSKI, LECH LECIEJEWICZ, ROMUALD SCHILD,
WOJCIECH SZYMAŃSKI, ZENON WOŹNIAK

Redaktor techniczny – Technical Editor
JAN A. DRAJCZYK

TŁUMACZE – TRANSLATORS
Dorota Piwowar – teksty niemieckie – German texts
Tomasz Szlagor – teksty angielskie – English texts

EDITORIAL OFFICE: Instytut Archeologii i Etnologii
Polskiej Akademii Nauk,
Oddział we Wrocławiu
ul. Więzienna 6
50-118 Wrocław

„Przegląd Archeologiczny” is regularly listed in the International Current
Awareness Service: Anthropology. Selected material is indexed in the
International Bibliography of Social and Cultural Anthropology.

Przegląd Archeologiczny © Copyright 1993 All Rights Reserved

All papers are copyright to their authors and to Przegląd Archeologiczny

No part of this publication may be reproduced or transmitted in any form or by any means, electronic or mechanical, including
photocopy, recording, or any information storage and retrieval system, without permission from the copyright owner.

Instytut Archeologii i Etnologii – Oddział we Wrocławiu
Oddano do składania w październiku 1993 r.
Druk ukończono w marcu 1994 r.

Druk: KEA
Wrocław, ul. Osobowicka 89

TREŚĆ – CONTENTS

Jan DĄBROWSKI, O wieloczęściowych diademach łuzycyjskiego zespołu kultur	5
Mehrteilige Diademe des Lausitzer Kulturkomplexes – Zusammenfassung . . .	15
Władysław ŁOSIŃSKI, Groby typu Alt Käbelich w świetle badań przeprowadzonych na cmentarzysku wczesnośredniowiecznym w Świelubiu pod Kołobrzegiem	17
Gräber vom Typ Alt Käbelich im Lichte der Ausgrabungen auf dem frühmittelalterlichen Gräberfeld in Świelubie bei Kołobrzeg – Zusammenfassung	33
Katarzyna DYMEK , Renesansowe kafle z zamku Wleń	35
Renaissancekacheln vom Schloß Wleń – Zusammenfassung	62
Dyskusje – Discussions	
Marek OLĘDZKI, Naddunajska grupa kultury przeworskiej w świetle analizy źródeł pisanych	65
Danubian group of Przeworsk Culture in the Light of Written Sources – Summary	73
Paweł RZEŹNIK, Przyczynek do studiów nad techniką wykonania naczyń wczesnośredniowiecznych	75
Ein Beitrag zu den Studien über die Anfertigungstechnik der frühmittelalterlichen Gefäße – Zusammenfassung	85
Zespoły datowane metodą 14C – Complexes dated by the 14C method	
Jan DĄBROWSKI, Małgorzata MOGIELNICKA-URBAN, The Radiocarbon Dating of the Three Objects from the Settlement of Lusatian Culture at Maciejowice, Siedlce Voivodeship	87
Recenzje – Reviews	
The Wetland Revolution in Prehistory (Ewa Bugaj)	101
M. Gedl, Die Vorläusitzer Kultur, Prähistorische Bronzefunde (Elżbieta Kłosińska)	106
T. Kemenczei, Die Schwerter in Ungarn II (Vollgriffschwerter). Prähistorische Bronzefunde (Bogusław Gediga)	111
Olga Kytlicová, Die Bronzegefäße in Böhmen. Prähistorische Bronzefunde, Band 12; Jindra Nekvasil, Vladimír Podborský, Die Bronzegefäße im Mähren, Prähistorische Bronzefunde, Band 13 (Bogusław Gediga)	114
Birka Studies. Investigations in the Black Earth. Vol. 1, Early Investigations and Future Plans (Marian Rębkowski)	117
P. F. Wallace, The Viking Age Buildings of Dublin. Medieval Dublin Excavations 1962–81 (Lech Leciejewicz)	120



ROCK ART STUDIES: NEW APPROACHES

**Symposium 1A of the
1995 International Rock Art Congress
Pinerolo-Torino, Italy 30 August-8 September.**

The symposium *Rock art studies: new approaches* will concentrate on taking a fresh look at studying prehistoric imagery. Creating new analytical models taking the discipline into the 21st century will involve a significant rejuvenation of analytical methodology and epistemological rigour.

Among the topics likely to be covered in this symposium are technological studies and physicochemical analyses; the identification of various types of residues (for instance binders, proteins lipids, extenders etc. in rock paints, organic inclusions in mineral accretions over petroglyphs); software of image analysis and manipulation; nano-stratigraphy of paints; new developments in direct dating of rock art; microscopic study and 'internal analysis' of tool marks in rock art and portable art; discrimination of anthropic and non-anthropic marks on rock and portable objects, and relevant ethology; replication studies; erosion and micro-erosion studies; relationships between phylogenetic and ontogenic development of logic and symbolism; the psychology of iconicity and its decipherment; concepts of type and typicalness in prehistoric art, symbolism and psychology; distinction between mental and artistic representations; the application of taphonomic logic at both technical and epistemic levels; epistemology in the formulation of theories and in the interpretation of palaeoart; valid applications of statistics in the discipline; sound utilization of universals in palaeoart studies; and other experimental approaches. Contributions are invited from many disciplines, ranging from paleobotany to mathematics, biology to geography, to assist palaeoart specialists in establishing comprehensive new approaches for the rigorous study of prehistoric art. An initial aim of the symposium is to discuss and compare the potentials of new approaches.

To facilitate constructive dialogue among those wishing to partake in these new developments, the participation of cultural anthropologists, psychologists, linguists, neurophysiologists, epistemologists and semioticians is strongly encouraged. Methods of reasoning relevant to the discipline will be elucidated, and the areas of possible collaboration with other disciplines defined. In the past, the study of palaeoart has become unduly isolated among the disciplines concerned with human antiquity. However, common objectives should facilitate common approaches. Innovative work usually results from interdisciplinary collaboration in a scientific community. It is the objective of this symposium to reinforce this tradition and to develop future approaches in all facets of the discipline.

The role of this symposium will not merely be that of a theoretical forum, hypothesizing about future directions. An integral component will be an exhibition of specialized scientific equipment and technologies which are envisaged to play a role in the new research directions in palaeoart studies. Currently available techniques are to be demonstrated wherever possible, and practical applications of theoretical models and methods encouraged. Mindful that delegates have to travel far to attend an international conference, and that they need to secure the greatest possible advantage in terms of practical information, the organizers are determined to provide, with the help of specialized manufacturers of equipment, the technological environment that is needed to translate the proposed theoretical models into practical research realities.

The proceedings of this symposium are to be published soon after the congress and they are expected to become a blueprint for the future development of the discipline.

Call for papers

Papers from Africa, the Americas, Asia and Australia can be submitted to

Robert G. Bednarik
Australian Rock Art Research Association
P.O. Box 216
Caulfield South, Vic 3162
Australia

Papers from Europe, including Russia, can be submitted to

Francesco d'Errico
Department of Archaeology
Downing Street
CB2 3DZ Cambridge
U.K.



PRICE LIST
OF THE MONOGRAPHS & PERIODICALS
PUBLISHED BY THE INSTITUTE OF ARCHAEOLOGY AND ETHNOLOGY
POLISH ACADEMY OF SCIENCES

MONOGRAPHS:

1. B. Balke, *Kultura przeworska w międzyrzeczu Wisły, Pilicy i Iłzanki* (The Przeworsk Culture in the Region between Wisła, Pilica and Iłzanka Rivers; summary in German), Warszawa 1991 20 \$ US
2. H. Dobrzańska, *Osada z późnego okresu rzymskiego w Igolomi, woj. krakowskie* (The Late Roman Settlement at Igolomia, Cracov Province; summary in English), Part I — Materials, Wrocław 1990 20 \$ US
3. H. Dobrzańska, Part II, Kraków 1990 20 \$ US
4. A. Janeczek, *Osadnictwo pogranicza polsko-ruskiego. Woj. belskie od schyłku XIV do początku XVII wieku* (Settlement on the Polish-Ruthenian Borderlands. Belz Voivodeship from the Late 14th to Early 17th Centuries; summary in German), Warszawa 1993 30 \$ US
5. S. Kadrow, *Iwanowice. Stanowisko Babia Góra, cz. I. Rozwój przestrzennej osady z wczesnego okresu epoki brązu* (Iwanowice. Babia Góra Site. Part I. Spatial evaluation of an Early Bronze Age Settlement; summary in English), Kraków 1991 20 \$ US
6. S. Kadrow, A. & J. Machnik, *Iwanowice. Stanowisko Babia Góra, cz. II. Cmentarzysko z wczesnego okresu epoki brązu* (Iwanowice. Babia Góra Site. Part II. The Early Bronze Age Cemetery; summary in English), Kraków 1993 20 \$ US
7. E. Kowicka, *Dwór „najrzędniejszego w Polsce magnata”* (The Court of „the Most Prosperous Magnate in Poland”; summary in English), Warszawa 1993 20 \$ US
8. A. Kulczycka-Leciejewiczowa, *Osadnictwo neolityczne w Polsce południowo-zachodniej. Próba zarysu organizacji przestrzennej* (Neolithic Settlement System in South-Western Poland. An Outline of the Spatial Organisation; summary in English), Wrocław 1994 25 \$ US
9. J. Maik, *Tekstylnia wczesnośredniowieczna z wykopalisk w Opolu* (Early Medieval Textiles from Excavations in Opole; summary in German), Warszawa 1991 15 \$ US
10. U. Maj, *Stradów I, stanowisko 1. Część I — Ceramika wczesnośredniowieczna* (Stradów I, Site 1. Part I — The Early Medieval Pottery; summary in German), Kraków 1990 15 \$ US
11. E. Mazur, *Warszawska Spółdzielnia Mieszaniowa 1921—1939* (The Warsaw Housing Co-operative 1921—1939; summary in English) [sept. 1993]
12. A. Niewęgłowski, *Cmentarzysko kultury przeworskiej w Garwolinie, woj. siedleckie* (The Przeworsk Culture Cemetery in Garwolin, Siedlce Voivodeship; summary in German), Warszawa 1991 15 \$ US
13. Ł. Okulicz-Kozaryn, *Finowie Zachodni* (Western Finns; summary in English) 25 \$ US
14. J. Ostojka-Zagórski, *Mezoregion Sobiejuchy na Palukach. Dynamika procesów zasiedlania w starożytności* (The Mesoregion of Sobiejuchy in the Pałuki Area. The Dynamics of Settlement Processes in Ancient Times; summary in English, German), Żnin 1993 20 \$ US
15. E. Tryjarski, *Kultura ludów tureckich w świetle przekazu Mahmuda z Kaszgaru [XI w.]* (The Culture of the Turkish People in the Relation of Mahmud of Kashgar, 11th Century), Warszawa 1993 25 \$ US
16. I. Turnau, *History of Dress in Central and Eastern Europe from the Sixteenth to the Eighteenth Century*, Warszawa 1991 25 \$ US
17. I. Turnau, *History of Knitting Before Mass Production*, Warszawa 1991 25 \$ US
18. I. Turnau, *Ubiór narodowy w dawnej Rzeczypospolitej* (National Costume in the Ancient Poland; summary in English), Warszawa 1991 25 \$ US
19. P. Urbanczyk, *Medieval Arctic Norway*, Warszawa 1992 30 \$ US
20. *Uzbrojenie w Polsce średniowiecznej 1350—1450* (Arms and Armour in Medieval Poland 1350—1450; summary in English) [ed. A. Nadolski], Łódź 1990 25 \$ US
21. *Lokalne ośrodki władzy państwowej w XI—XII wieku w Europie środkowo-wschodniej* (Local State Power Centres in Middle East Europe in 11th—12th Centuries; summary in German) [ed. S. Moździoch], Wrocław 1993 25 \$ US

THE LIBRARY OF POLISH ETHNOGRAPHY

22. Vol. 44, M. Drozd-Piasecka, *Ziemia w społeczności wiejskiej. Studium etnograficzne wsi południowo-wschodniego Mazowsza* (Land in the Rural Community. A Study of the Villages of South-East Mazovia. Late 19th and 20th Centuries; summary in English), Warszawa 1991 15 \$ US
23. Vol. 45, I. Kabzińska-Stawarz, *Games of Mongolian Shepherds*, Warszawa 1991 20 \$ US
24. Vol. 46, J. Kowalska, *Tree of Life Dance. Cultural Universals in Motion*, Warszawa 1991 20 \$ US

BIBLIOTHECA ANTIQUA

25. Vol. XXII, M. Nowicka, *Le portrait dans la peinture antique*, Warszawa 1993 30 \$ US

POLISH ARCHAEOLOGICAL RESEARCH

26. Vol. 30, E. Kempisty, Z. Sulgostowska, *Osadnictwo paleolityczne, mezolityczne i paraneolityczne w rejonie Woźnej Wsi, woj. łomżyńskie* (Palaeolithic, Mesolithic and Paraneolithic Settlement System in the Region of Woźna Wieś, Łomża Voivodeship; summary in English), Warszawa 1991 20 \$ US
27. Vol. 31, *Sandomierz. Badania 1969—1973* (Sandomierz. Field Seasons of 1969—73) [ed. S. Tabaczynski], vol. 1 30 \$ US

STUDIES AND MATERIALS IN THE HISTORY OF MATERIAL CULTURE

28. Vol. LXIII, D. Główna, *Gospodarka w dobrach plebańskich na Mazowszu w XVI—XVIII w.* (Management of Parish Lands in Mazovia in the 16th to 18th Century; summary in English), Warszawa 1991 20 \$ US
29. Vol. LXIV, A. Pośpiech, *Pałapka oczywistości. Pośmiertne spisy ruchomości szlachty wielkopolskiej z XVII wieku* (The Trap of Obviousness. Posthumous Inventories of Moveable Property of the Wielkopolska Nobility in the 17th Century; summary in English), Warszawa 1992 20 \$ US

PERIODICALS:

ARCHAEOLOGIA POLONA (in English)

The Polish archaeological annual journal intended for an international audience. Its main purpose is to present a wide range of various approaches to the most important problems of contemporary archaeology. The editorial policy is to produce monothematic volumes. each 25 \$ US

ARCHEOLOGIA

(in English, French, German, Polish with English abstract)

The annual edited since 1947. It deals with classical archaeology and the ancient culture. Its aim is to present general studies, field reports, publications of finds and monuments, reviews. each 30 \$ US

32, 33, 34. Vols XLI /1990/, XLII /1991/, XLIII /1992/

ARCHEOLOGIA POLSKI (in Polish with English abstract, German, English)

Semi-annual published since 1957. It publishes original studies on the archaeology with special concern of Polish lands until 14th century, on methods and methodology of research, discussions and polemics. each 20 \$ US
 35, 36. Vols XXXV: 1990, iss. 1 & 2
 37. Vol. XXXVI: 1991, iss. 1/2 double iss. 40 \$ US

ETHNOLOGIA POLONA (in English)

The annual published since 1975. It includes materials written by Polish and foreign scholars. 25 \$ US

ETNOGRAFIA POLSKA

“Polish Ethnography” is a semi-annual. It publishes on Polish, world and general subjects, the last volume XXXVI/2 is devoted to Quincentenary of discovery of America. each 20 \$ US

39, 40, 41, 42. Vols XXXV, iss. 1 & 2 (1991), XXXVI, iss. 1 & 2 (1992)

KWARTALNIK HISTORII KULTURY MATERIALNEJ (in Polish with English, German and French summaries)

“History of Material Culture Quarterly” is a scientific journal published by the Institute. It presents the issues connected with the history of Polish and European civilisation from its dawn to the 20th century, from the point of view of archaeology and social history. It discusses the most interesting interdisciplinary problems. “Quarterly” publishes texts concerning the history of craft, industry and agriculture, history of material culture, industrial archaeology and other fields. per year 40 \$ US

43—51. Vols XXXIX, iss. 1—4 (1991); XL, iss. 1—4 (1992); XLI, iss. 1—4 (1993)

POLISH ARCHAEOLOGICAL ABSTRACTS (in English)

The annual of the Institute, published since 1972. It contains short summaries of works concerning archaeology, published in Poland. each 25 \$ US

52, 53. Vols. 19 (1991) & 20 (1993)

PRZEGLĄD ARCHEOLOGICZNY (“Archaeological Review” — in English, German, Polish)

The annual of the Institute founded in 1919, publishes studies on the archaeology with special concern of Polish archaeological research. It contains approximately 180 pages presenting general studies, publications of finds and monuments, reviews; includes drawings, maps and photographs. each 25 \$ US

54, 55, 56. Vols 38 (1991), 39 (1992) & 40 (1993)

SPRAWOZDANIA ARCHEOLOGICZNE (“Archaeological Reports” — in Polish, summaries in English)

The annual of the Institute, contains field reports, publications of archaeological finds and monuments in Poland. each 20 \$ US

57, 58, 59. Vols XLII (1990), XLIII (1991) XLIV (1992), XLV (1993)

Orders should be sent to:

INSTYTUT ARCHEOLOGII I ETNOLOGII PAN

POLAND

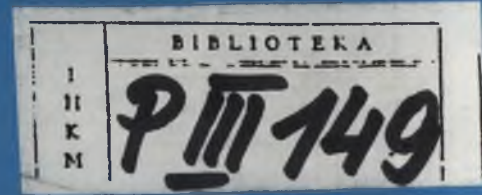
Al. Solidarności 105
 00-140 WARSZAWA
 Tel./Fax (48 22) 24 01 00

Mr Piotr PODGÓRSKI
Mrs Alina NOWAK

Payment by Bank Transfer:
 POWSZECHNY BANK KREDYTOWY S.A., VIII/O. WARSZAWA,
 the bank account of
INSTYTUT ARCHEOLOGII I ETNOLOGII PAN, no 370028-4499

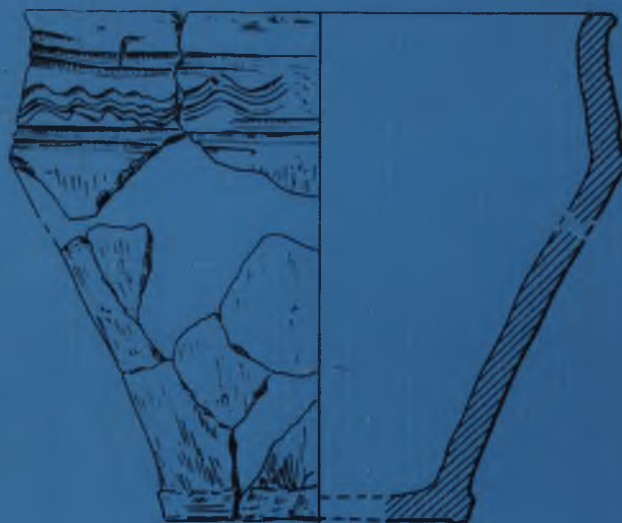
CZYTELNIA

INSTITUTE OF ARCHAEOLOGY AND ETHNOLOGY
POLISH ACADEMY OF SCIENCES



PRZEGLĄD ARCHEOLOGICZNY

VOL. 41



IAE
PAN