

SUNDAPTINUS TAMDAOENSIS, NEW SPECIES OF SPIDER-BEETLES (COLEOPTERA: PTINIDAE) FROM VIETNAM

JERZY BOROWSKI¹ and PIOTR WĘGRZYNOWICZ²

¹ Katedra Ochrony Lasu i Ekologii, SGGW, ul. Rakowiecka 26/30, 02-528, Warszawa, Poland
e-mail: borowski@delta.sggw.waw.pl

² Muzeum i Instytut Zoologii, Polska Akademia Nauk, ul. Wilcza 64, 00-679, Warszawa, Poland
email: piotr@robal.miiz.waw.pl

Abstract. — New species – *Sundaptinus tamdaoensis* sp. nov. from Tam Dao is described.



Key words. — Entomology, taxonomy, Vietnam, Ptinidae, Coleoptera, new species.

Expedition of the Museum and Institute of Zoology, Polish Academy of Sciences, collected zoological material in Vietnam, especially in Tam Dao National Park. Below we present the description of a new species of *Sundaptinus* collected during this expedition.

Sundaptinus tamdaoensis sp. nov.

Name derivation. The species is named after locus typicus, Tam Dao.

Diagnosis. The species resembles *S. schawalleri* Borowski (Fig. 3) and *S. biernackii* Borowski (Fig. 4), but has a much narrower pronotum, much longer posterior part of pronotum, more robust elytra outline, and white-grey scales on the front of the head. It also can be easily separated from *S. schawalleri* Borowski by absence of white-grey scales on the anterior part of pronotum.

Description (female). Length 2.4 mm. Body (Fig. 1) black, shiny with long, yellow-brown hairs.

Head. Eyes round and weakly convex. Frons with distinct, short, narrow and deep furrow, and covered by white-greyish scales. Antennae (Fig. 2) with elongate antennomeres; antennomeres 1–2 black, antennomeres 3–10 with yellow-brown apices, antennomere 11 completely yellow-brown. First antennomere covered by small, white-grey scales.

Pronotum distinctly narrower than base of elytra. Anterior part of pronotum almost square in outline, shiny, with two transverse rows of deep punctures; its posterior angles very distinct, sharp, without deep narrow furrows; pubescence of anterior part of the pronotum brown, sparse, long and very erect. Anterior part of pronotum widely separated from posterior one. Posterior part of pronotum very wide and wholly covered by white-grey scales.

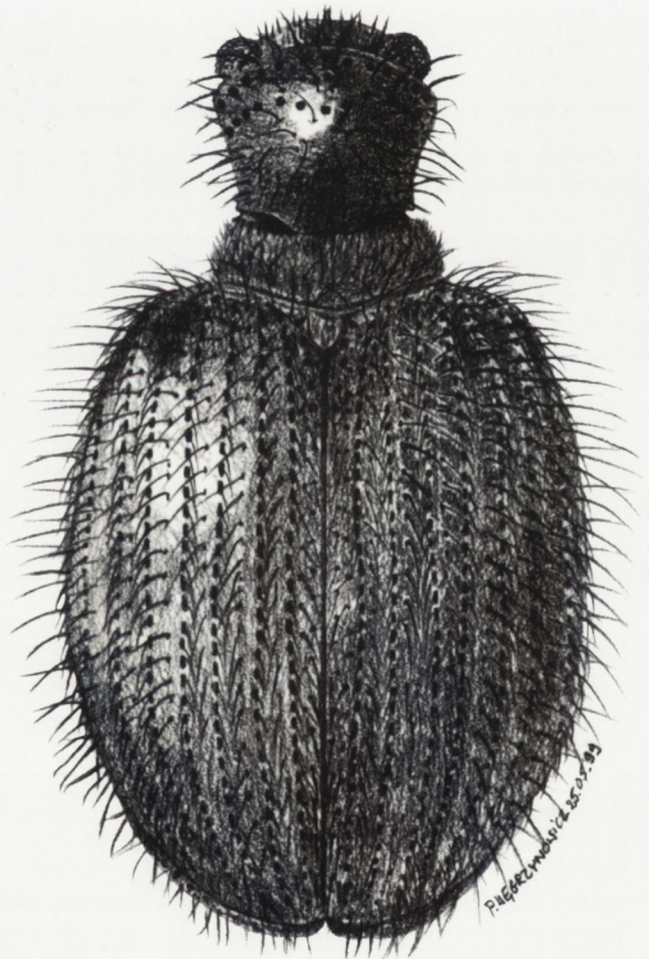


Figure 1. *Sundaptinus tamdaoensis*, body

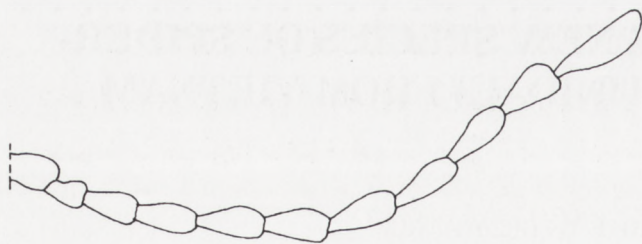


Figure 2. *Sundaptinus tamdaoensis*, antenna

Scutellum elliptical in outline, covered by white-grey scales.

Elytra wide, posterior broadly rounded. Punctures in rows small, indistinct. Intervals wide. Intervals pubescence long, erect, inclined towards elytral suture and apex, similar in length to each other. Hairs in rows of punctures much shorter than in intervals, suberect, inclined towards apex.

Legs long. Trochanters and base of femora red; remaining of femora black, with yellow-brown apical parts. Tibia and tarsi red.

Underside with silvery-white hairs.

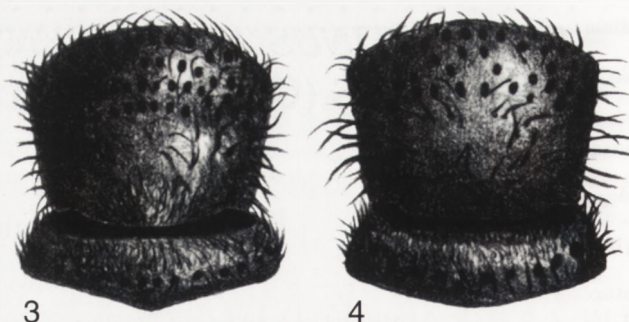
Male unknown.

Bionomy. Holotype was collected on leaves of bushes.

Type material. Holotype (female): "Vietnam, Tam Dao Prov. Viñh Phúc 9–12.04.1999 leg. A. Stroiński et

Received: July 30, 1999

Accepted: September 30, 1999



Figures 3–4. *Sundaptinus* spp., pronotum: (3) *S. schawalleri*; (4) *S. biernackii*

P. Węgrzynowicz", "Mus. Zool. Polonicum Warszawa 4/99", "Holotype", "*Sundaptinus tamdaoensis* sp. n. det. J. Borowski et P. Węgrzynowicz", "Mus. Zool. Polonicum Warszawa typus n. 1927 *Sundaptinus tamdaoensis* ♀ Borowski et Węgrzynowicz, 1999 Holotypus" (preserved in the Museum and Institute of Zoology, Polish Academy of Sciences, Warsaw).

REFERENCE

- Borowski, J. 1997. New data on the distribution of Oriental spider beetles, with a description of five new species (Coleoptera: Ptinidae). Genus, Wrocław, 8 (3–4): 685–700.

Corresponding Editor: S. A. Ślipiński
Issue Editor: M. Hołyńska