

Józef RAZOWSKI

List of Neotropical *Aethes* BILLB. and *Aethesoides* RAZ. (Lepidoptera,
Tortricidae) with description of new species

[With 18 text-figures]

Abstract. Three new Neotropical species of *Aethes* (*Ae. monera* sp. n., *Ae. tuxtiana* sp. n., *Ae. lassa* sp. n.) and three species of *Aethesoides* (*Ae. allodapa* sp. n., *Ae. mexicana* sp. n., *Ae. hondurasica* sp. n.) are described. The Neotropical species of *Aethes* and all known species of *Aethesoides* are included in the catalogues.

Neotropical species of widely distributed genus *Aethes* BILLBERG and known species of Neotropical *Aethesoides* RAZOWSKI are listed. Six species are described as new, 5 ones from the material provided kindly by Prof. Dr. Jerry A. POWELL whom I would like thank sincerely. The holotypes are deposited in the collection of the University of the California, Berkeley, if not stated otherwise.

Descriptions of new species

Aethes monera sp. n.

Alar expanse, 21 mm. Labial palpus ca 3.5, brownish grey, remaining parts of head greyish. Forewing slender, not expanding terminally; costa almost straight; apex pointed; termen strongly oblique, straight. Unicolourous white-grey with small brownish spot at disc; fringes concolorous with

wing. Hindwing brownish grey with whitish fringes. Variation: labial palpus in paratype cream above and terminally, remaining parts of head concolorous, thorax and forewing pale ochreous cream, the latter with some scattered black-brown scales forming minute dashes along dorsum. Hindwing brownish with pale, ochreous cream fringes.

Male genitalia (Figs 1-4): Median portion of transtilla wedge-shaped; vinculum arm slender. Valva broad, tapering terminally; sacculus slightly convex, without free termination; dense, strong setae in ventral and partially terminal parts of internal surface. Aedeagus short, curved, slightly expanding before terminal third ventrally; caulis short extending dorsally to form sclerotized prominences accompanied by membranous hairy lobes; cornutus slender, capitate.

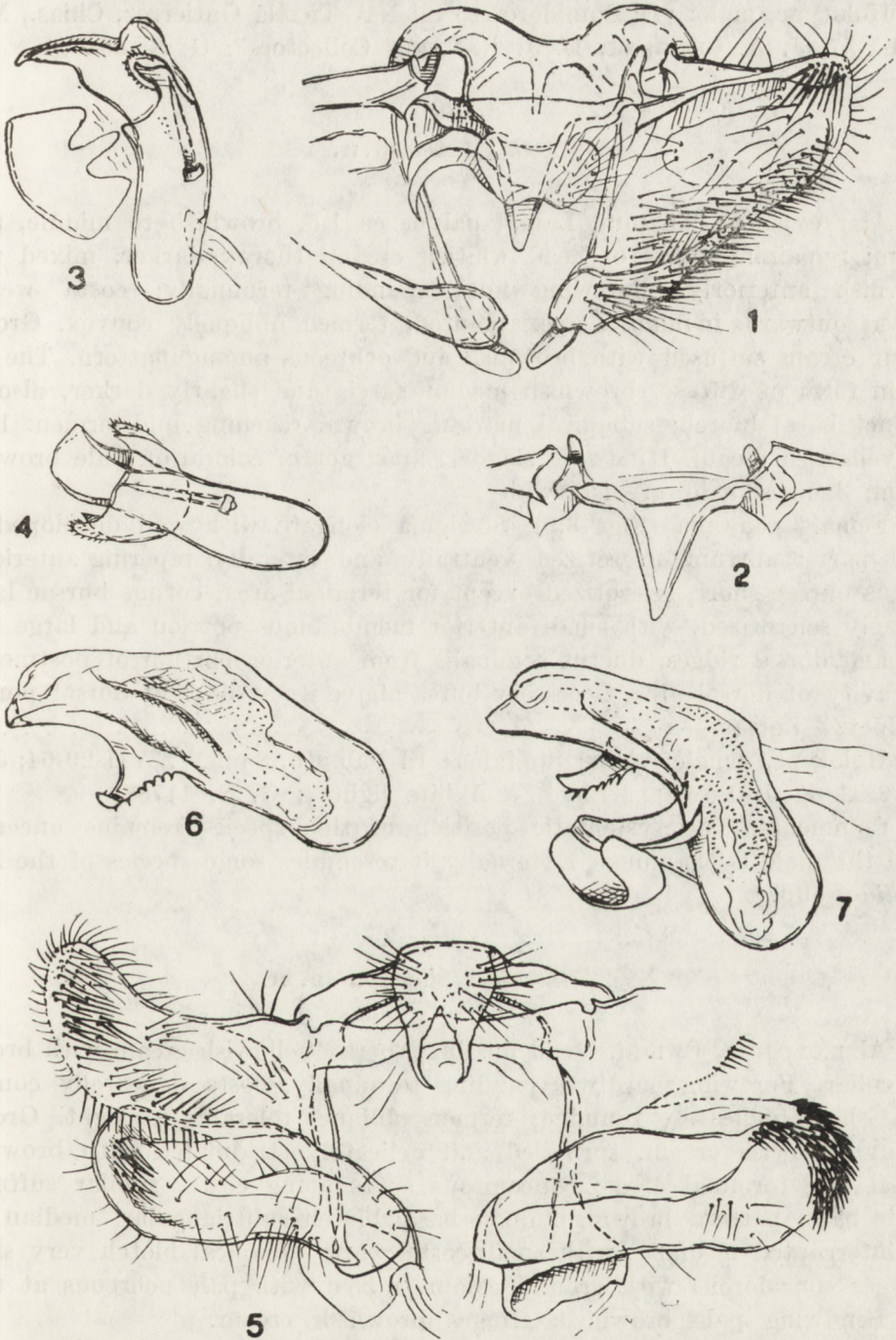
Holotype, male: "Mex: Durango, 28 mi. E. El Salto 8400', VIII-4/7-72; J. POWELL collector"; G.S. 6087. Paratype (male) labelled "Mex: Las Rusias, 12 mi E. La Ciudad Dgo., 9200' VIII-14-17-72; J. POWELL, D. VEIRS & C. D. MACNEILL, bl. & white lights".

Comments. The new species is close to *Ae. angustana* ROBINSON known of the Nearctic Region but differs mainly in the shapes of the valva and aedeagus. The female remains unknown.

Aethes tuxtлана sp. n.

Alar expanse, 12 mm. Labial palpus 2.5, cream, remaining parts of head concolorous; thorax strongly suffused with ochreous. Forewing not expanding terminally; costa hardly concave subapically, otherwise straight; apex rounded; termen indistinctly concave before middle. Ground colour whitish, slightly mixed with cream in basal and apical portions of the wing; dorsum dark brown suffused with ochreous along internal edge, extending as far as to tornus; costa concolorously suffused to middle; dorsal suffusion reaching almost middle breadth of wing at maximum. Fringes whitish. Hindwing with broad, rounded apex, whitish in colour, suffused with brown in anal area; fringes whitish except for anal area, where brownish.

Male genitalia (Figs 5-7): Socius short, broad basally; arm of vinculum strongly expanding ventrally, fused with valva; transtilla, a slender band hardly broadening in middle. Valva strong; right valva (partially damaged) with strong sacculus, rounded and spined terminally; left valva smaller, with shorter, less distinctly spined sacculus, with slender, rounded apically dorsal half, upcurved distally, spined ventrally. Aedeagus stout, curved, provided with strong, minutely dentate process extending from beyond middle of left side and longitudinal prominences of the right and dorsal walls; caulis very strong, antemedian; no curnuti in vesica.



Figs 1-7. Male genitalia of *Aethes* BILLB.: 1-4 - *Ae. monera* sp. n., holotype; 5-7 - *Ae. tuxtлана* sp. n., holotype.

Holotype, male: "El Sumidero, 15 mi NW Tuxtla Gutierrez, Chias., Mex. VIII-1-57; J. A. CHEMSAK, B. J. RANNELS Collectors"; G. S. 6045.

Aethes lassa sp. n.

Alar expanse, 9.5 mm. Labial palpus ca 1.5, brownish to middle, then cream; remaining parts of head whitish cream; thorax darker, mixed with brownish anteriorly. Forewing not expanding terminally; costa weakly curved outwards in middle; apex pointed; termen obliquely convex. Ground colour cream suffused with brownish and ochreous among pattern. The latter in form of diffuse, brownish median fascia and slightly darker, also indistinct basal blotch; subapical marking brown, reaching mid-termen. Fringes yellowish cream. Hindwing slender; apex acute; coloration pale brownish cream; fringes pale greyish white.

Female genitalia (Figs 8,9): Sterigma elongate with well developed lateral parts; antrum sclerotized ventrally and laterally, tapering anteriorly; ductus bursae short, sclerotized except for terminal area; corpus bursae large, strongly sclerotized, with small anterior membranous portion and large ventral and dorsal ridges; ductus seminalis from anterior portion of postmedian concavity of dorsal area, accessory bursa above it, at base of dorsal portion of ductus bursae.

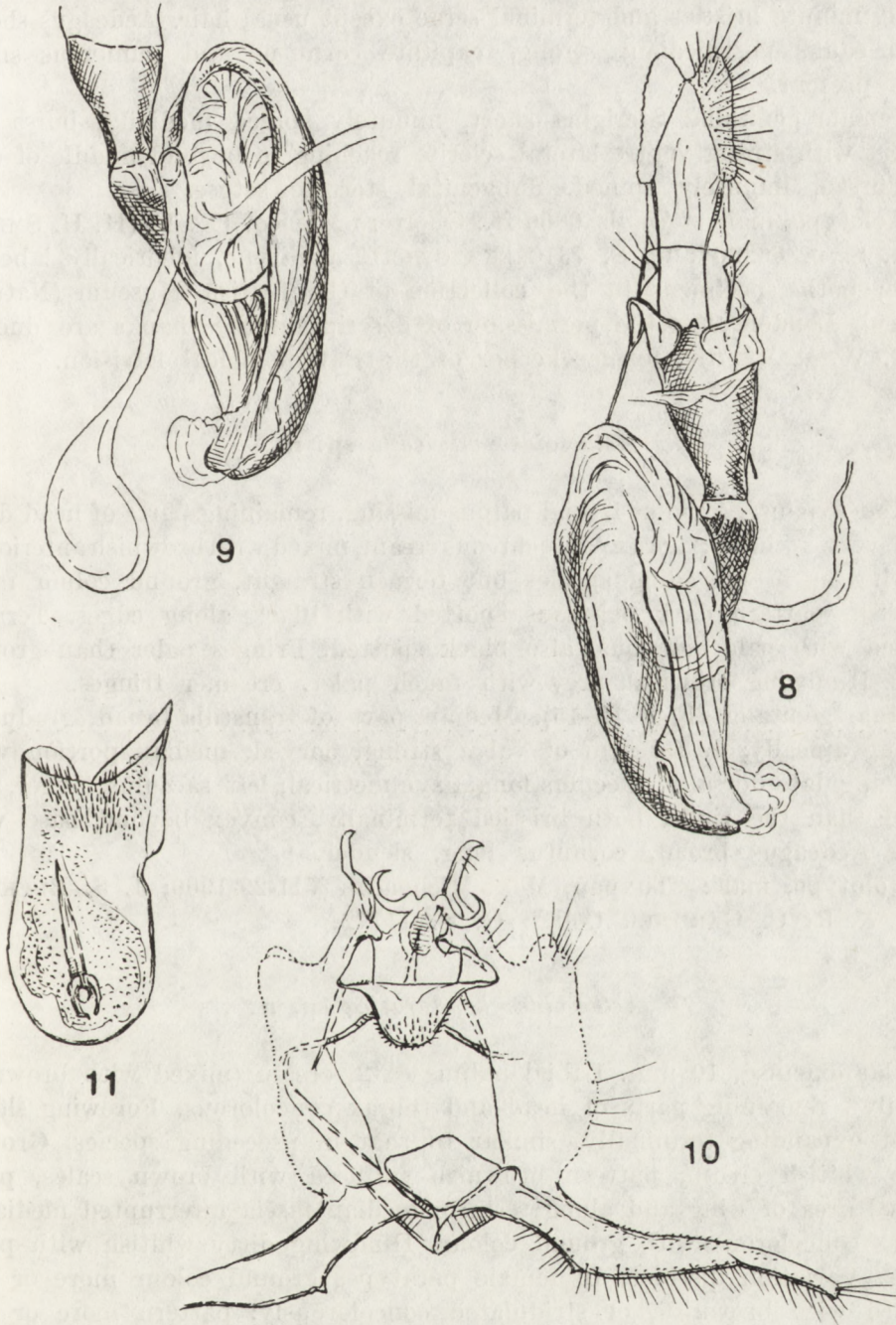
Holotype, female: "Mex: Sin.[aloe] El Palmito, 8 mi W., VII-29-64; J. A. CHEMSAK & J. POWELL. Black & White lights"; G. S. 11783.

Comments. The systematic position of this species remains uncertain until the male is examined. Externally it resembles some species of the *Phaenidia*-group.

Aethesoides allodapa sp. n.

Alar expanse, 12 mm. Head missing; thorax yellowish cream with brownish collar. Forewing hardly expanding terminally; costa delicately convex; apex short, delicately rounded; termen oblique, tolerably straight. Ground colour yellowish cream, sprinkled and delicately stridulated with brown in tornal and terminal areas; concolorous spots along costa, similar suffusion at its base; pattern brownish; dorso-basal blotch subtriangular; median fascia interrupted medially, with small costal part; subapical blotch very short. Fringes concolorous with ground colour, mixed with pale ochreous at tornus. Hindwing pale brownish; fringes brownish cream.

Male genitalia (Figs 10, 11): Median part of transtilla broad, minutely spined dorsally; vinculum arm broadening terminally; costal arm of valva slender, pointed apically; sacculus very long, provided with ventral dent before



Figs 8-11. Male and female genitalia: 8,9 - *Aethes lassa* sp. n., holotype; 10,11 - *Aethesoides allodapa* sp. n., holotype.

middle, minute bristles and terminal setae except usual hair. Aedeagus short, broad; caulis postmedian; strong, capitate cornutus and numerous small spines present.

Female genitalia: Sterigma short, minutely spined medially; bursa copulatrix with strong ventro-lateral sclerite reaching to beyond middle of corpus bursae, minutely spined. Subgenital sternite setose.

Holotype, male: "Amula 6000 ft., Guerrero Mexico, IX. 18 (H. H. SMITH) Gdmn. Slvn. 66290"; G. S. 7310 [RAZOWSKI]; paratype, identically labelled female; both specimens in the collection of the British Museum (Natural History), London. For the permission of description the thanks are due to Dr. P. WHALLEY, the former keeper of the Entomological Division.

Aethesoides mexicana sp. n.

Alar expanse, 12 mm. Labial palpus missing, remaining parts of head dark cream, vertex whiter; thorax pale ochreous cream, mixed with brownish anteriorly. Forewing as in preceding species but termen straight, ground colour more yellowish, pattern dark ochreous spotted with black along edges. Termen suffused with pale ochreous, also black spotted. Fringes paler than ground colour. Hindwing brownish grey with much paler, creamer fringes.

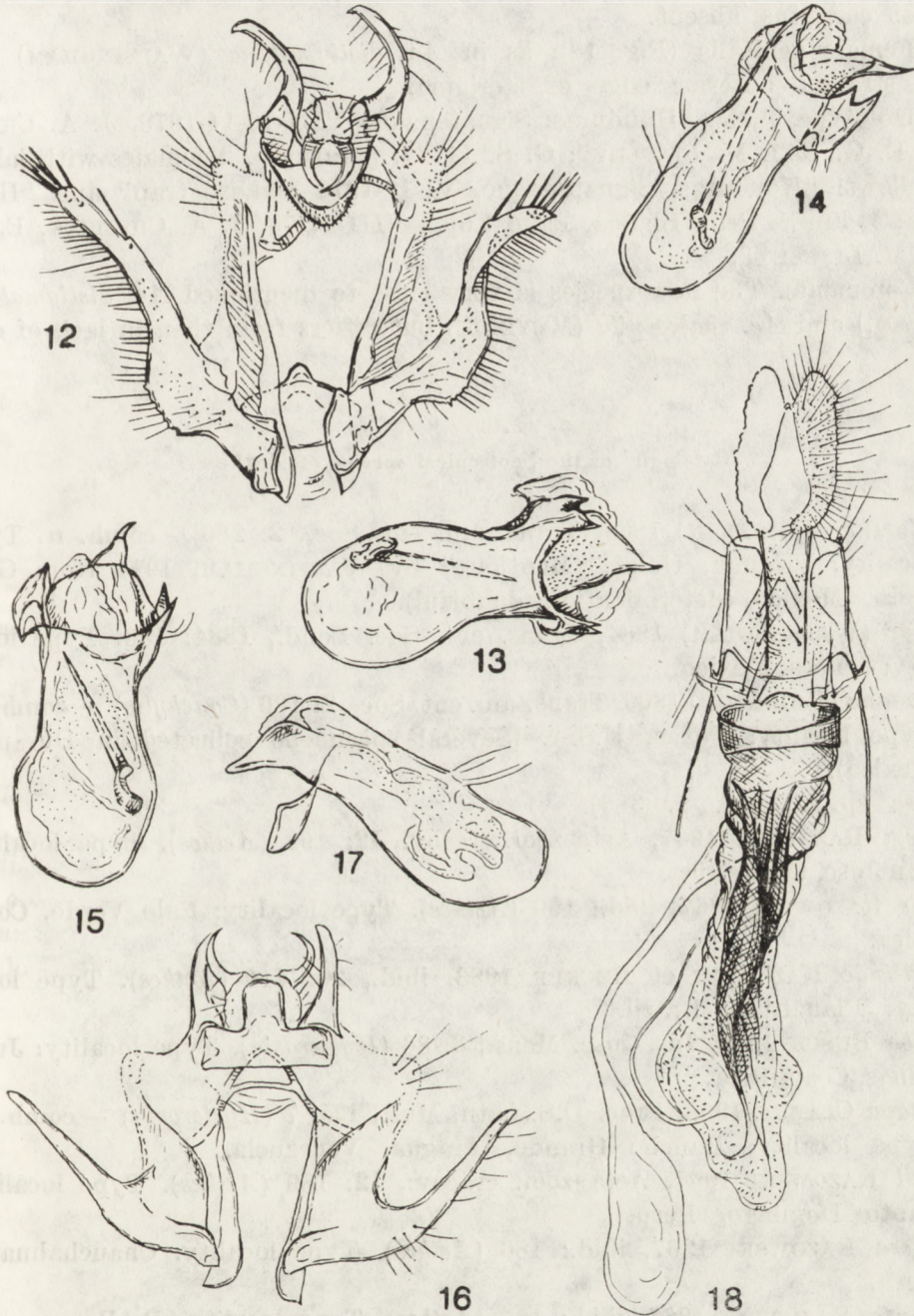
Male genitalia (Figs 12-15): Median part of transtilla broad, gradually tapering apically; costal arm of valva strong, curved; median portion very short, angulate dorsally; sacculus long, asymmetrical; left sacculus longer, less curved than the right, both bristled terminally, convex beyond base ventrally. Aedeagus broad, cornutus long, slender.

Holotype, male: "Tuxpan, Mex. Michoacan VII-29-1966; J. S. BUCKETT M. r. & R. C. GARDNER Coll."; G. S. 11772.

Aethesoides hondurasica sp. n.

Alar expanse, 10 mm. Labial palpus ca 2, cream (mixed with brownish medially), remaining parts of head and thorax concolorous. Forewing slender, not expanding terminally, similar to that in preceding species. Ground colour whitish cream; pattern brownish suffused with brown scales, paler in basal area of wing and along termen; median fascia interrupted medially. Fringes concolorous with ground colour. Hindwing dirty whitish with paler fringes. Variation distinct. In female paratypes ground colour more or less suffused with brownish, or stridulated concolorously; pattern more or less dark.

Male genitalia (Figs 16,17): Median part of transtilla small, rounded apically; costal arm of valva slightly curved, acute; median portion of valva short, with rounded dorsal angle; sacculus convex beyond base ventrally, with



Figs 12–18. Male and female genitalia of *Aethesoides* RAZ.: 12–15 – *Ae. mexicana* sp. n., holotype; 16,17 – *Ae. hondurasica* sp. n., holotype; 18 – same species, female paratype.

slender, tapering terminally distal part. Aedeagus slender, with postmedian caulis; cornutus absent.

Female genitalia (Fig. 18): as in *Ae. distigmatana* (WALSINGHAM) but with straight anterior edge of sterigma.

Holotype, male: "Honduras: Siguatepaque VIII-10-14-1978, J. A. CHEMSAK, E. G. & J. M. LINSLEY"; G. S. 11784; paratypes, 2 females with labels as follows: "Honduras, Siguatepaque, VI-17-1979 Malaise trap" and "Honduras: 4. km S. Peña Blanca, Lake Yojoa VIII-17-78, J. A. CHEMSAK, E. G. & J. M. LINSLEY".

Comments. The new species is very close to mentioned *Ae. distigmatana* (WALSM.) and *Ae. chalcospila* (MEYRICK) but differs from them in lack of cornutus.

Catalogue of the Neotropical species of *Aethes*

angulatana (ROBINSON) 1869, Trans. am. ent. Soc., **2**: 286 — **comb. n.** Type locality: Virginia, U.S.A. (Mentioned by WALSINGHAM, 1914 from Guerrero, Mexico (determination doubtful).

sonorae (WALSINGHAM) 1884, Trans. ent. Soc. Lond., **1884**: 130. Type locality: Sonora, Mexico.

promptana (ROBINSON) 1869, Trans. am. ent. Soc., **2**: 186 (*Conchylis*) — **comb. n.** Type locality: Texas, U.S.A. (Several specimens collected in Durango, Mexico).

monera sp. n. (c.f. p. 383).

agelasta RAZOWSKI 1967, Acta zool. cracov., **12**: 192 (*Aethes*). Type locality: San José, Costa Rica.

affinis RAZOWSKI 1967, *ibid.*: 190 (*Aethes*). Type locality: Palo Verde, Costa Rica.

planaltinae RAZOWSKI et BECKER 1983, *ibid.*, **26**: 444 (*Aethes*). Type locality: Planaltina, Brazil.

turalba BUSCK 1920, Ins. Insc. Mens., **3**: 86 (*Hysterosia*). Type locality: Juan Vinas, Costa Rica.

alphitopa CLARKE 1968, Proc. U.S. natn. Mus., **125**: 7 (*Hysterosia*) — **comb. n.** Type locality: Rancho Grande, Aragua, Venezuela.

annosa RAZOWSKI 1967, Acta zool. cracov., **12**: 189 (*Aethes*). Type locality: Santo Domingo, Peru.

dentifera RAZOWSKI 1967, *ibid.*: 186 (*Aethes*). Type locality: Chauchahuaya, Peru.

inexpecta RAZOWSKI 1967, *ibid.*: 185 (*Aethes*). Type locality: R. Parana, Argentina.

austrera RAZOWSKI 1967, *ibid.*: 185 (*Aethes*). Type locality: Castro, Paraná, Brazil.

- jonesi* RAZOWSKI 1967, *ibid.*: 183 (*Aethes*). Type locality: Castro, Paraná, Brazil.
- mordax* MEYRICK 1917, *Trans. ent. Soc. Lond.*, **1917**: 4 (*Phalonia*). Type locality: R. Parana, Argentina.
- tuxtana* sp. n. (p. 388).
- lassa* sp. n. (p. 390).
- evanida* RAZOWSKI et BECKER 1983, *Acta zool. cracov.*, **26**: 445 (*Aethes*). Type locality: Banhado, Quatro Barras, Paraná, Brazil.
- grandaeva* RAZOWSKI et BECKER 1983, *ibid.*: 445 (*Aethes*). Type locality: Banhado, Quatro Barras, Paraná, Brazil.
- mirifica* RAZOWSKI et BECKER 1983, *ibid.*: 446 (*Aethes*). Type locality: Planaltina, District Federal, Brazil.
- portentosa* RAZOWSKI et BECKER 1983, *ibid.*: 447 (*Aethes*). Type locality: Planaltina, District Federal, Brazil.

Catalogue of *Aethesoides*

- allodapa* sp. n. (p. 390).
- mexicana* sp. n. (p. 392).
- hondurasica* sp. n. (p. 392).
- distigmatana* (WALSINGHAM) 1895, *Proc. zool. Soc. Lond.*, **1895**: 137 (*Phalonia*). Type locality: Balthazar (Windward Side), Grenada.
- chalcospila* (MEYRICK) 1932, *Exotic Microlepid.*, **4**: 265 (*Phalonia*). Type locality: N. Hamburg, Rio Reventazon, Costa Rica.
- enclitica* (MEYRICK) 1917, *Trans. ent. Soc. Lond.*, **1917**: 3 (*Phalonia*). Type locality: Alausi, Ecuador.
- columbiana* RAZOWSKI 1967, *Acta zool. cracov.*, **12**: 193 (*Aethesoides*). Type locality: Valparaiso, Colombia.

LITERATURE

- WALSINGHAM. 1914. *Biologia Centrali-Americana. Insecta. Lepidoptera Heterocera*, London, **4**, 482 pp, 10 tt.

Zakład Zoologii Systematycznej
i Doświadczalnej PAN
31-016 Kraków, Sławkowska 17

STRESZCZENIE

[Tytuł: Wykaz neotropikalnych *Aethes* BILLB. oraz *Aethesoides* RAZ. (*Lepidoptera*, *Tortricidae*) i opisy nowych gatunków]

Jako nowe zostały opisane *Aethes monera* sp. n., *Ae. tuxtiana* sp. n., *Ae. lassa* sp. n. *Aethesoides allodapa* sp. n., *Ae. mexicana* sp. n. i *Ae. hondurasica* sp. n. Załączone katalogi obejmują neotropikalne gatunki *Aethes* i wszystkie znane gatunki *Aethesoides*.

РЕЗЮМЕ

[Заглавие: Список неотропических *Aethes* BILLB. и *Aethesoides* RAZ. (*Lepidoptera*, *Tortricidae*) и описания новых видов]

Описаны следующие новые виды: *Aethes monera* sp. n., *Ae. tuxtiana* sp. n., *Ae. lassa* sp. n., *Aethesoides allodapa* sp. n., *Ae. mexicana* sp. n. и *Ae. hondurasica* sp. n. Прилагаемые каталоги охватывают неотропические виды *Aethes* и все известные виды *Aethesoides*.