

Józef RAZOWSKI

**Synopsis of *Platphalonidia* RAZ. (*Lepidoptera*, *Tortricidae*)**

[With 9 text-figures]

**Abstract.** Three Neotropical species of *Platphalonidia* (*P. mimosina* sp. n., *P. californica* sp. n., *P. tehuacana* sp. n.) are described as new. Included catalogue contains the data on all known species of the genus.

The genus in question is distributed throughout the New World, but the majority of the species were described from the Neotropical Region. The description and complete characteristic of the genus is given in the paper by RAZOWSKI (1985). This paper constitutes the descriptions of the new species and the catalogue of the known species.

**Descriptions of new species**

*Platphalonidia californica* sp. n.

Alar expanse, 14 mm. Labial palpus ca 2, brownish, remaining parts of head concolorous, thorax darker. Forewing not expanding terminally, costa hardly concave before apex; apex rounded; termen weakly oblique, tolerably straight. Wing brownish with paler group of scales especially in terminal third of wing; pattern indistinct, in form of diffuse dorsal blotch and trace of subapical marking. Fringes concolorous with ground colour. Hindwing whitish, mixed with brownish at apex and partially beyond it; fringes cream with indi-

stinct median line. Variation: ground colour pale grey-brown to yellowish brown; pattern occasionally distinct, brownish to brown in form of complete or interrupted median fascia and subapical blotch extending almost to tornus, both unicolorous or marked with dark brown or black-brown medially; cream or cream-brown spots along costa before apex. Fringes often with dark brown divisions.

Male genitalia (Figs 1,2): Socius distinct; valva fairly broad; sacculus stout; median part of transtilla broad with curved apical prominences. Aedeagus slender, with small cornutus.

Female genitalia (Fig. 3): Antrum elongate; sclerites of sterigma strongly tapering terminally, hairy; ductus bursae broad; corpus bursae small; accessory bursa originating in middle of ductus bursae; ductus seminalis anteriorly to the latter.

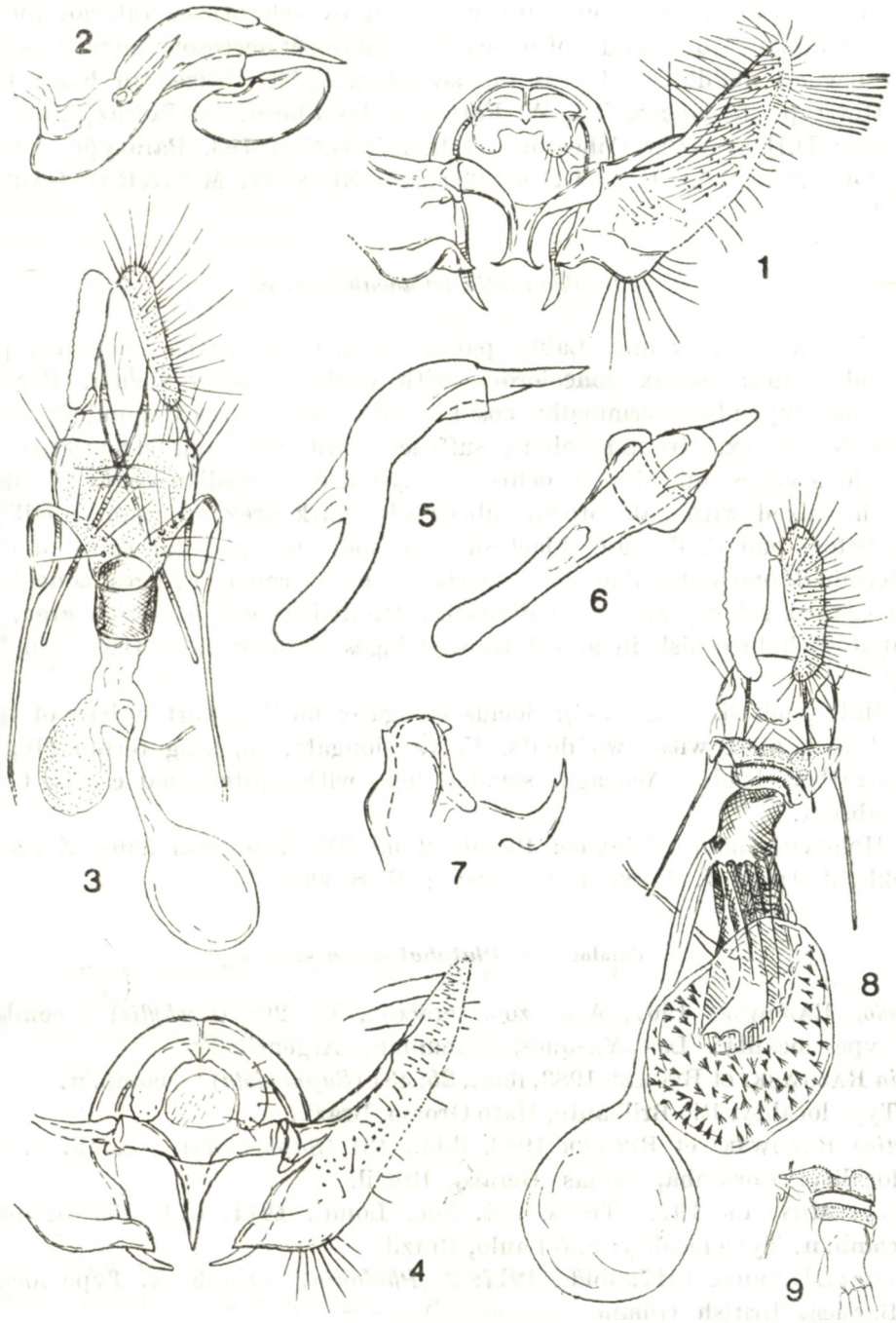
Holotype, male: "Mex: Baja Cal.[ifornia] Norte, Miller's Landing 6-IV-76, black light trap, P. RUDE"; G.S. 11754. Paratypes: 12 females labelled similarly as the holotype but dated also 5-IV-76 and 30-III-73 and collected by J. POWELL, J. DOYEN and P. RUDE; one paratype bears the label "Mex: 14 mi. SE Sombrereto, Zac.[otecas] VIII-23-65; C. SLOBODCHIKOFF Collector".

Comments. The new species is closely related to Chilean *P. mendora* CLARKE. As all species of this genus it shows very slight genital differences to its allies, especially as concerns the males. Two specimens were bred from *Encelia veneforum*. This and the following species are described of the material kindly sent by Prof. Dr. Jerry A. POWELL whom I am expressing my sincere thanks. The holotypes are deposited in the collection of the University of California, Berkeley.

*Platphalonidia mimosina* sp. n.

Alar expanse, 10 mm. Labial palpus over 1.5, pale brownish, cream terminally; front and vertex mixed with whitish; thorax ochreous with browner tegula. Forewing broadest medially; costa curved outwards mostly in middle; termen weakly oblique, somewhat convex. Ground colour pale ochreous; pattern in form of diffuse median fascia and subterminal blotch extending to beyond middle of wing, brownish ferruginous, marked with brown medially, and paler tornal marking edged with dark brown. Fringes yellowish cream with some brownish divisions. Hindwing brownish grey; fringes paler. Variation: paratype somewhat larger than type, head yellow-ochreous, browner laterally; tegumen cream ferruginous. Ground colour pale ferruginous, pattern much darker, distinct.

Female genitalia (Figs 8,9): Sterigma with sculptured anterior plate and distal lobes membranously connected with apophyses, membranous laterally. Ductus bursae sclerotized, with several longitudinal folds in anterior half; corpus bur-



Figs 1-9. Genitalia of *Platphalonidia* Raz.: 1, 2 - *P. californica* sp. n., holotype, male; 3 - same species, paratype, female; 4-7 - *P. tehuacana* sp. n., holotype, male; 8, 9 - *P. mimosina* sp. n., holotype, female.

sae spined, with dorsal concavity protected by sclerotized anterior margin, ductus seminalis from middle of concavity; ductus of accessory bursa extending from beyond middle of ductus bursae laterally, sclerotized in basal third.

Holotype, female: "2 mi. W. Fortin de las Flores, Ver.[acruz] Mex. VII-II-1962; D.H. JANZEN Collector; At light"; G.S. 11793. Paratype (female): "Cordoba Mex. Vera Cruz VII-6-1966; J.S. BUCKETT, M.R.&R.C. GARDNER Coll."

*Platphalonidia tehuacana* sp. n.

Alar expanse, 11 mm. Labial palpus ca 2, olive cream, remaining parts of head whiter; thorax concolorous with darker base of tegula. Forewing somewhat expanding terminally; costa hardly convex; apex rounded; termen obliquely convex. Ground colour, suffused with grey and strigulated dark grey along edges, mixed with ochreous beyond disc; median fascia indistinct, greyish, mixed with pale brown subcostally, dark grey at costa; small grey spot before end of dorsum; blackish grey spots along distal third of costa, subterminal one extending as a fascia to mid-termen. Fringes concolorous with ground colour, with grey divisions. Hindwing pale brownish grey, strigulated with brownish in apical third; fringes slightly paler than middle of wing.

Male genitalia (Figs 4-7): Socius elongate; median part of base of transstilla broad, apex with two dents. Valva elongate, tapering terminally; sacculus rather slender. Aedeagus slender, long with subterminal caulis. Cornutus absent.

Holotype, male: "Mexico: Puebla 2 mi SW Tehuacan 5300' X-5-75, blacklight trap; J. POWELL collector"; G. S. 6079.

Catalogue of *Platphalonidia* species

*assector* RAZOWSKI 1967, Acta zool. cracov., **12**: 206 (*Cochylis*) — **comb. n.**

Type locality: Los Vasques, Tucuman, Argentina.

*dubia* RAZOWSKI et BECKER 1983, *ibid.*, **26**: 431 (*Saphenista*) — **comb. n.**

Type locality: Rio Brilhante, Mato Grosso, Brazil.

*mystica* RAZOWSKI et BECKER 1983, *ibid.*: 431 (*Saphenista*) — **comb. n.** Type locality: Corumbá, Minas Gerais, Brazil.

*fusifera* MEYRICK 1912, Trans. ent. Soc. Lond., **1911**: 674 (*Phtheochroa*) — **comb. n.** Type locality: São Paulo, Brazil.

*galbana* MEYRICK 1917, *ibid.*, **1917**: 2 (*Phalonia*) — **comb. n.** Type locality: Bartica, British Guiana.

*domna* CLARKE 1986, Proc. U.S. nat. Mus., **125**: 34 (*Amallectis*) — **comb. n.** Type locality: Narinã, Volcan Galeras, Colombia.

*ochraceana* RAZOWSKI 1967, Acta zool. cracov., **12**: 207 (*Cochylis*) — **comb. n.** Type locality: Los Vasques, Tucuman, Argentina.

- paranae* RAZOWSKI et BECKER 1983, *ibid.*, **26**: 430 (*Saphenista*) — **comb. n.**  
 Type locality: Mandurituba, Paraná, Brazil.
- felix* WALSINGHAM 1895, *Trans. Soc. ent. Lond.*, **1895**: 499 (*Phalonia*) —  
**comb. n.** Type locality: Loweland, Colorado, U.S.A.
- plicana* WALSINGHAM 1884, *ibid.*, **1884**: 131 (*Conchylis*) — **comb. n.** Type  
 locality: Sonora, Mexico.
- mimosina* sp. n. (p. 382).
- mendora* Clarke 1968, *Proc. U.S. natn. Mus.*, **125**: 24 (*Cochylis*) — **comb. n.**  
 Type locality: Cajon de Mayo, Santiago Prov., Chile.
- californica* sp. n. (p. 381).
- sublivacea* WALSINGHAM 1897, *Proc. zool. Soc. Lond.*, **1897**: 137 (*Phalonia*)  
 — **comb. n.** Type locality: St. Thomas, W. Indies.
- sublimis* MEYRICK 1917, *Trans. ent. Soc. Lond.*, **1917**: 2 (*Phalonia*) — **comb. n.**  
 Type locality: Huancayo, Peru.
- tehuacana* sp. n. (p. 384).

## REFERENCE

- RAZOWSKI J. 1985. On the generic groups *Saphenista* and *Cochylis* (*Tortricidae*). *Nota lepid.*,  
*Wetteren*, **8** (1): 50–60.

Zakład Zoologii Systematycznej  
 i Doświadczalnej PAN  
 31-016 Kraków, Sławkowska 17

## STRESZCZENIE

[Tytuł: Przegląd gatunków *Platphalonidia* RAZ. (*Lepidoptera*, *Tortricidae*)  
 Obok wykazu gatunków *Platphalonidia* praca zawiera opisy trzech no-  
 wych gatunków neotropikalnych: *P. mimosina* sp. n., *P. californica* sp. n.  
 i *P. tehuacana* sp. n.]

## РЕЗЮМЕ

[Заглавие: Обзор видов из рода *Platphalonidia* RAZ. (*Lepidoptera*, *Tortricidae*)  
 Работа содержит кроме списка видов *Platphalonidia* также описания трех новых  
 неотропических видов: *P. mimosina* sp. n., *P. californica* sp. n. и *P. tehuacana* sp. n.]

Redaktor pracy — prof. dr J. Nast