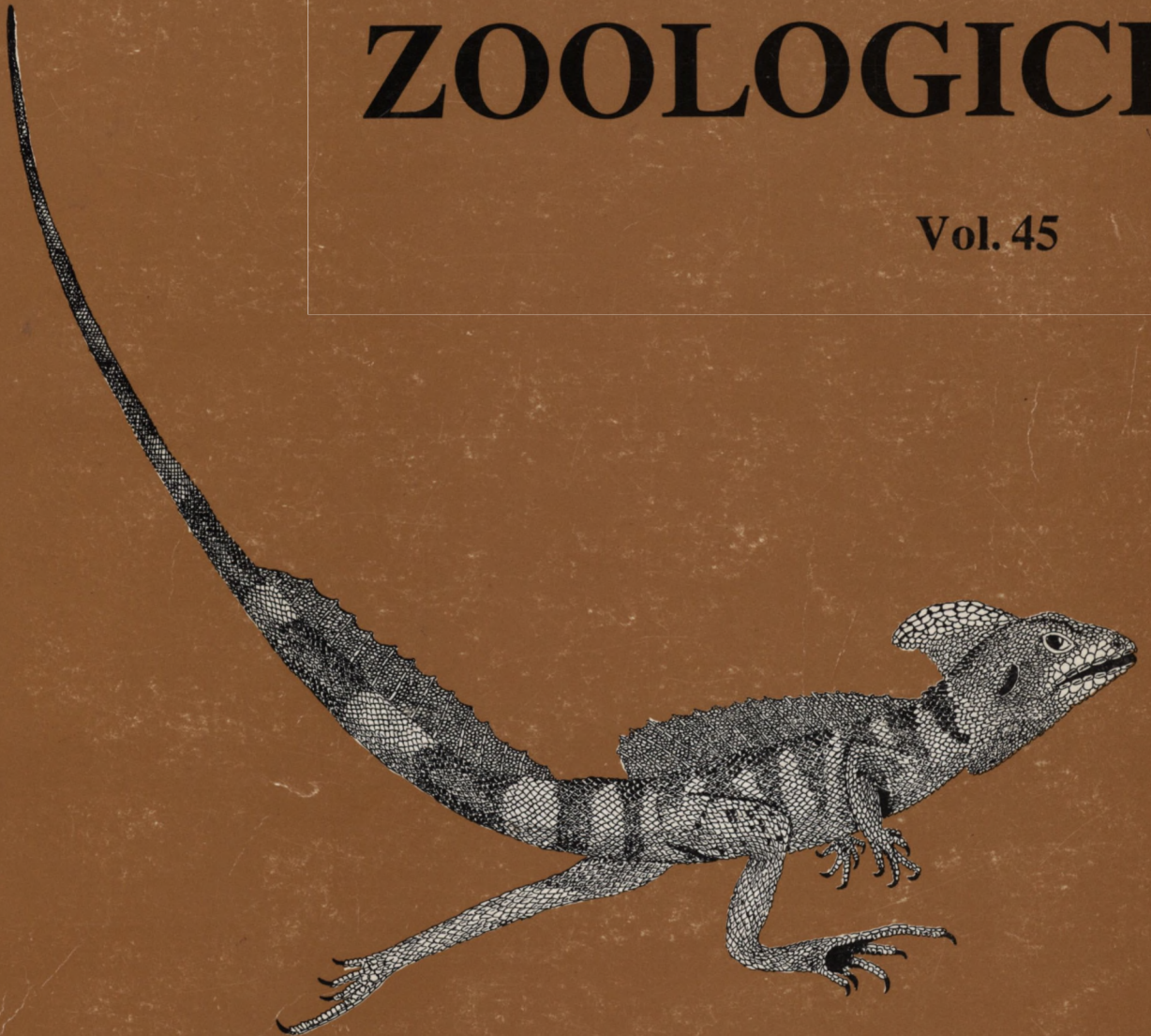


7.12.94
MUSEUM AND INSTITUTE OF ZOOLOGY
POLISH ACADEMY OF SCIENCES

ANNALES ZOOLOGICI

Vol. 45



P. 255
WARSZAWA, 1994

<http://rcin.org.pl>

Biblioteka Muzeum i Inst. Zoologii PAN

P. 255

Vol. 45



1000000000496

Museum and Institute of Zoology
Polish Academy of Sciences

Annales Zoologici

Journal devoted to all aspects of the systematic zoology

Editor in Chief: Stanisław L. Kazubski

Editors: Beata M. Pokryszko and S. Adam Ślipiński

Managing Editor: Piotr Węgrzynowicz

Editorial Board:

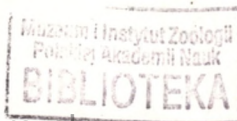
Thierry BACKELJAU, Bruxelles
Arthur BOGAN, Philadelphia
Michał BRZESKI, Skierniewice
Wojciech CZECHOWSKI, Warszawa
Joachim HAUPT, Berlin
Stanisław L. KAZUBSKI, Warszawa
Otto KRAUS, Hamburg
John F. LAWRENCE, Canberra
Herbert W. LEVI, Cambridge, Mass.
Volker MAHNERT, Geneve

Sandor MAHUNKA, Budapest
James PAKALUK, Washington
Norman I. PLATNICK, New York
Beata M. POKRYSZKO, Wrocław
Jerzy PRÓSZYŃSKI, Warszawa
Adolf RIEDEL, Warszawa
Stanisław Adam ŚLIPIŃSKI, Warszawa
Margaret K. THAYER, Chicago
Paolo TONGIORI, Modena
Przemysław TROJAN, Warszawa

Address of Executive Editors:

Stanisław L. Kazubski and Stanisław Adam Ślipiński
Museum and Institute of Zoology
of Polish Academy of Sciences
00-950 Warszawa, ul. Wilcza 64, Poland
tel. 628-73-04, tel./fax 29-63-02

Beata M. Pokryszko
Museum of Natural History
Wrocław University
50-335 Wrocław, ul. Sienkiewicza 21, Poland
tel. 22-50-41, ext. 34



INSTRUCTIONS FOR AUTHORS

Annales Zoologici is published by the Museum and Institute of Zoology, Polish Academy of Sciences.

It is an international journal devoted to all aspects of the systematic zoology. Papers are submitted with the understanding that they have not been published elsewhere and are not being considered for publication elsewhere (This restriction does not apply to abstracts published in connection with meetings.) Prior to the acceptance for publication each manuscript is reviewed by two anonymous referees.

Authors are requested to pay attention to the instructions below concerning the preparation of the manuscript; manuscripts deviating from the required form will be returned for revision.

The languages of publications are English (strongly preferred), French and German. The Authors whose mother tongue is not the language of the submitted paper are strongly advised to have the manuscript linguistically reviewed prior to submitting. Manuscripts written in poor language will be returned with no review.

Please submit to one of the Executive Editors three copies of each paper with tables, figure captions and figures. Retain the original illustrations. Final version (corrected after the review process and language review) of the manuscript must be submitted as printed version accompanied by an original illustrations and a computer disk (IBM PC-compatible format), as an ASCII or WordPerfect file.

Papers should conform to the following layout:

- 1. Title page.** This should include title, authors, institutions, correspondence address, key words and short running title. The title should be concise but informative, and, where appropriate, should include mention of families and/or higher taxa covered in the paper. Submitting paper with multiple authors, one author must accept the responsibility for all correspondence.
- 2. Abstract.** This must be on a separate page. The abstract should be informative, concise and should be produced in a form that is intelligible in conjunction with the title. It should not exceed 200 words.
- 3. Table of contents.** For larger papers over 100 manuscript pages, authors are requested to submit a "Table of Contents".
- 4. The standard arrangement** of the main paper is as follows: Introduction, Material and Methods, Results, Discussion, Acknowledgments, References.
- 5. Names of genera** and species should be underlined or italicized. Use SI units and appropriate symbols. The Zoological Code should be strictly followed.
- 6. Footnotes** and **cross references** should be kept to a minimum.
- 7. References.** References in the text should be cited: Smith (1990); (Smith 1990: 231); Smith and John (1990: 231) or (Smith, John 1990). In the scientific names use "et" as the connecting phrase). First-author *et al.* system should be adopted for references with more than two authors. References should be listed alphabetically with book and journal titles in full. Use small letters a...z to indicate references published by the same author within one year. For papers published in an alphabet other than Latin with a summary, a title or an abstract in Latin alphabet - cite this "original" translation. If there is no such translation use English translation in brackets, with an indication of the original language. For names of the journals, in an alphabet other than Latin, the translation according the BIOSIS Base Source should be accepted.

Examples:

Mazur S. 1984. A world catalogue of Histeridae. *Polskie Pismo Entomologiczne*, **54**: 1-379.

Mulsant E., Rey A. 1844a. *Histoire Naturelle des Coléoptres de France*. Maison, Paris, VII + 196 pp., pl. 1.

Lawrence J. F. 1982. Coleoptera. In: *Synopsis and classification of living organisms* (ed. by S. P. Parker). Vol. 2, McGraw-Hill, New York, pp. 482-553.

Ponomarenko A.G. 1985. [Beetles from the Jurassic of Siberia and western Mongolia]. *Trudy Paleontologicheskogo Instituta*, **211**: 47-87 (in Russian).

8. **Tables** should be kept as simple as possible. These should be printed on a separate sheets, should be numbered consecutively and self-explanatory.

9. **Illustrations.** Illustrations are referred to as "Fig., Figs" in the text (not as plates), and should be accompanied by a reference bar. Captions should be typed on a separate sheet, numbered consecutively. All illustrations should be marked on the reverse with author's name, figure number(s) and "top."

Illustrations should be mounted on boards in the arrangement to be obtained in printed work, and may not exceed 28 x 40 cm; after the reduction they should fit with their appropriate captions the plate size: 17 x 21 cm. Lettering has to be done by the Author. All submitted illustrations (black-and-white line drawings, and half-tone illustrations) must be high quality prints or originals. Photographs are best

submitted in their final size. Original illustrations will be returned to the author upon publication.

10. **Page proofs:** only one set of page proofs will be sent, and authors are charged for any major Author-generated alterations.

11. Authors will receive 50 offprints, further offprints may be ordered at extra cost at the proof stage.

12. **Publication costs.** Authors who have institutional or grant support are expected to pay page charges of US\$ 20.00 (\$40.00 for a page with half tone illustrations). Authors who are unable to pay page charges (or only able to make partial payment) may ask for a waiver when submitting manuscripts.



Nakład 800 egz. Papier kl. III 80 g.
Skład komputerowy, łamanie i diapozytywy – Dział Wydawnictw MiIZ PAN
Druk – Drukarnia Nr 1, Warszawa, Rakowiecka 37

<http://rcin.org.pl>



100000000496

ANNALES ZOOLOGICI

Vol. 45

Contents

- J. Pakaluk.** Review of the Immature Stages of Baridinae II: Madarini (Coleoptera: Curculionidae) 1
- W. Czechowski.** Emancipation of Slaves in *Formica sanguinea* Latr. Colonies (Hymenoptera, Formicidae) 15
- M. Próchniewicz.** The Jumping Spiders of the Ethiopian Region. Part I. New genus *Langelurillus* gen. n. (Araneae, Salticidae) from Kenya 27
- M. Próchniewicz, S. Hęciak.** The Jumping Spiders of the Ethiopian Region. Part II. New species of *Aelurillus*, *Langona*, *Phlegra*, *Stenaelurillus* (Araneae, Salticidae) from Kenya and Tanzania 33
- B. Grytner-Zięcina, D. Cielecka.** *Fimbriaria sarcinalis* sp. n. (Cestoda, Hymenolepididae) – a New Parasite of *Aythya fuligula* L. and *Aythya nyroca* Güld. in Poland 43
- W. Czechowski.** Queen Recruitment in an Orphaned Colony of *Formica polyctena* Foerst. (Hymenoptera, Formicidae) 47
- A. Draber-Mońko.** Notes on Species of the Genus *Rondania* Robineau-Desvoidy, 1830 (Diptera, Tachinidae) 51