



Geographia Polonica
Volume 87, Issue 2, pp. 295-308
<http://dx.doi.org/10.7163/GPol.2014.18>



INSTITUTE OF GEOGRAPHY AND SPATIAL ORGANIZATION
POLISH ACADEMY OF SCIENCES
www.igipz.pan.pl

www.geographiapolonica.pl

80 YEARS AFTER THE 14TH CONGRESS OF THE INTERNATIONAL GEOGRAPHICAL UNION IN WARSAW, 23-31 AUGUST 1934

Antoni Jackowski • Elżbieta Bilaska-Wodecka • Izabela Soljan

Jagiellonian University
Institute of Geography and Spatial Management
Gronostajowa 7, 30-387 Krakow: Poland
e-mails: antoni.jackowski@wp.pl • e.bilaska@geo.uj.edu.pl • izabela.soljan@uj.edu.pl

Abstract

In 1934, the International Geographical Union arrived in Warsaw to attend its Congress which was held between 23rd and 31st August. A decision to accept the offer of the Polish government and meet for the first time in a Slavic country was taken at the previous Congress in Paris, in 1931. The Congress was attended by 693 participants from 44 countries, including 350 from Poland. The programme included 12 regional and thematic excursions and several cartographic exhibitions. Four volumes of *Comptes Rendus du Congrès International de Géographie* containing the proceedings of the Congress were published between 1935 and 1938.

Key words

history of geography • international geographical congress • International Geographical Union • Warsaw • Poland

The upcoming Regional Conference of the International Geographical Union (IGU) will be held in Krakow on 18-22 August 2014 on exactly the 80th anniversary of the 14th IGU Congress in Warsaw. Since that congress, which took place between 23rd and 31st August 1934, Poland has not had a chance to host a worldwide geographical event of that scale and prestige. This alone is sufficient

reason to devote a moment to that historic meeting, so momentous for the development of Polish geography.

Although the IGU was only established in 1922, geographers had already been meeting at worldwide events for some time. The first of these was held in Antwerp in 1871 and it was followed by nine more, including Rome in 1913, before the outbreak of the

Great War. The host countries included: Belgium, France (twice), Italy (twice), Switzerland (twice), the United Kingdom, Germany and the United States of America. Poles attended some of them, but only as citizens of the powers that had partitioned their country, which did not exist at that time. The first congress after the war was held quite late, in 1925 in Cairo, and this is when Poland was present officially for the first time. Cairo was followed by London and Cambridge in 1928 and Paris in 1931 (Lecomte de Martonne 1959; Kish 1992; Kosiński 2008). The latter congress was particularly rewarding for Poland as the IGU accepted the invitation of the Polish Government to organise the subsequent event in Warsaw, in 1934, and Eugeniusz Romer was formally elected Vice-President of IGU after having held this post unofficially since 1929.

The President of the Republic of Poland Ignacy Mościcki and Marshal of Poland Józef Piłsudski extended their honorary patronage to the Congress. For Poland, a country without statehood for more than 120 years before 1918, the organisation of an international event of this scale was as much an opportunity as a serious effort. In recognition of this

IGU agreed to give the Polish language equal status with the main congress languages (French and English) for the duration of the event (of which privilege none of the Polish delegates took advantage). Poland was the first Slavic country to host an IGU congress and this was also the first post-war IGU congress to be attended by a sizeable German delegation, as the country was only admitted to the IGU shortly beforehand. This German participation was seen as a political success on the Polish side. Also the Turks inaugurated their participation in IGU congresses by attending Warsaw.

On the Polish side the Congress was organised by the National Geography Committee operating under the Polish Academy of Arts and Sciences (Polska Akademia Umiejętności) in Krakow. An Organising Committee was established with Eugeniusz Romer (IGU Vice-President, Jan Kazimierz University of Lvov) as Chairman (Fig. 1), Antoni Sujkowski (Chairman of the Polish Geographical Society, Warsaw School of Economics) as Deputy Chairman (Fig. 2), Stanisław Pawłowski (Poznań University) as Secretary General (Fig. 3) and two Treasurers: Jerzy Loth (Warsaw School of Economics) and Stanisław Lencewicz

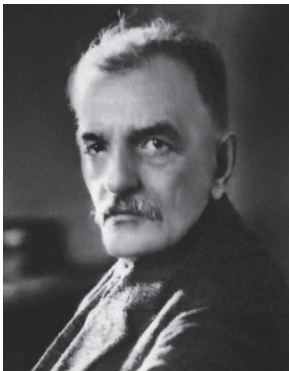


Figure 1. Eugeniusz Romer, Vice-President of the International Geographical Union, 1929-1938 and 1945-1949, Chairman of the Organisation Committee, Jan Kazimierz University, Lvov

Source: Archives of the Jagiellonian University Institute of Geography and Spatial Management.



Figure 2. Antoni Sujkowski, Chairman of Polish Geographical Society, Deputy Chairman of the Organisation Committee, Warsaw School of Economics

Source: Archives of the Jagiellonian University Institute of Geography and Spatial Management.

(Warsaw University). Members of the Committee included: Jerzy Smoleński (Jagiellonian University), Mieczysław Limanowski (Stefan Batory University of Vilnius), August Zierhoffer (Jan Kazimierz University of Lvov) and Jerzy Lewakowski (Military Geographic Institute) (Fig. 4). The opening ceremony and Congress proceedings took place at the Warsaw Polytechnic while the closing ceremony was staged in the Grand Hall of the Warsaw Scientific Society at the Staszic Palace (Zierhoffer 1935). Staszic Palace also housed Warsaw University's Department of Geography.

The opening ceremony was a major celebration and the President of Poland, Ignacy Mościcki, arrived accompanied by top national officials, including the Minister of Treasury Władysław Marian Zawadzki (acting as deputy to Prime Minister Leon Kozłowski), Speaker of the Parliament Kazimierz Świtalski, Head of the Foreign Ministry Józef Beck, Minister of Religious Confessions and Public Enlightenment Wacław Jędrzejewicz and the government's Commissioner for the City of Warsaw Władysław Jaroszewicz. The President took a prominent chair before the front rows, which were taken by heads of embassies and consulates

of the countries present in Poland (Figs. 5, 6, 7, 8, 9 and 10).

The session was opened by the Chairman of the International Geographical Union Isaiah Bowman (USA). After the opening speeches (including by Wacław Jędrzejewicz) the floor was given to representatives of the delegations, including Belgium, Germany, France, the USA, the UK, Italy and the Netherlands. The German speech was made by Ludwig Mecking who was also a representative of the Reich government. Read today, his text contains many statements that come across as mendacious, particularly those about the friendly feelings of Germany and its Fuehrer Hitler towards Poland. On the other hand, the intervention of the head of the delegation of French geographers, Emmanuel de Martonne, was received very positively, especially when he said: "Polish geography existed even when there was no Poland". Referring to the work of Ludomir Sawicki and Eugeniusz Romer he observed "During 15 years, independent Poland has made enormous achievements in geography. (...) One look at Poland reveals that it is a geographic body worthy of particular attention" (IKC 1934a: 13). Also he referred



Figure 3. Stanisław Pawłowski, Vice-President of International Geographical Union 1938-1939, Secretary General of the Organising Committee, Poznań University

Source: National Digital Archives (Narodowe Archiwum Cyfrowe), NAC 1-N-439



Figure 4. Jerzy Lewakowski, member of the Organising Committee, organiser of the international exhibition of contemporary cartography, later to become the Head of the Military Institute of Geography (Wojskowy Instytut Geograficzny)

Source: Archives of the Jagiellonian University Institute of Geography and Spatial Management.



Figure 5. Badge of the 14th IGU Congress

Source: Archives of the Jagiellonian University Institute of Geography and Spatial Management.



Figure 6. Medal with image of Wacław Nałkowski minted to commemorate the 14th IGU Congress. The medal was designed by Wacław Nałkowski's daughter, the Polish sculptor Hanna Nałkowska-Bickowa (1888-1970)

Source: Lencewicz 1934.

to Eugeniusz Romer as “the architect of the edifice of Polish geography”.

Charles Close, head of the Royal Geographical Society, referring to the stature of geography in the contemporary world observed: “The world is understood as the fatherland of Man – here is the grand motif of our discipline” (IKC 1934a: 13). In Warsaw he was elected the next IGU Chairman.

The last speaker to address the Congress during its opening was Eugeniusz Romer. Welcoming the guests on behalf of Polish geographers he said: “The idea of Poland, never forgotten and today reborn, creating itself, striding towards new worlds, I put foremost in my mind. This idea was what attracted you here; this and that awareness of the seriousness with which Poland desires to be known to you” (IKC 1934a: 14).

Figure 7. Template of the 14th IGU Congress participant sheet

Source: IGU 1935: 21.

At the end of the first day of the Congress President Ignacy Maścicki hosted geographers from around the world at the Warsaw Royal Castle.

Altogether 693 delegates from 44 countries of the world took part, including 367 Poles. Other large delegations included the French (87), German (50), British (44), Italian (43), Belgian (23), US and Spanish (10 each). A small Soviet delegation also arrived. Included among the international guests were several eminent geographers (Tab. 1). In the Polish delegation the foremost group included university researchers, but there were also teachers, popularisers of local history and geography, students of geography and enthusiasts. Alongside professional researchers there were also junior members of the government and representatives of the army and navy.

TABLEAU DES TRAVAUX.								
Sections et Commissions	Cartographie (salle 6)	Géographie physique (grande salle ou salle 8)	Géographie humaine (salle 3 ou s. 11)	Géographie pré-historique et historique, histoire de géographie (salle 2)	Paysage géographique (salle 5)	Didactique et méthodologie de l'enseignement géographique (salle 7)	Séances spéciales (grande salle)	
Jeu 23 Août	Séance générale d'ouverture à 11 h. dans le Grand Hall							
Vendredi 24 Août	9-12½ h. Sec. 16-18 h. Sec.	9-12½ h. Sec. 16-18 h. Sec.	9-12½ h. Sec. 16-18 h. Sec.	9-12½ h. Sec. 16-18 h. Sec.	9-12½ h. Sec.		18-19 h. H. St. J. L. Winterbotham	
Samedi 25 Août	9-12½ h. Séance spéciale consacrée à la Pologne						17-18 h. O. J. Schmidt	
Dimanche 26 Août	Excursions C ₁ , C ₂ , C ₃ , C ₄							
Lundi 27 Août	9-12½ h. Sec. 16-18 h. Sec.	9-12½ h. Sec. 15-18 h. Com.	9-12½ h. Sec. 15-18 h. Sec.	9-12½ h. Sec. 16-18 h. Sec.	9-12½ h. Sec.	9-12½ h. Sec. 16-18 h. Sec.	8-9 h. L. J. Burpee	
Mardi 28 Août	9-12½ h. Sec. 16-18 h. Com.	9-12½ h. Sec. 15-18 h. Com.	9-12½ h. Sec. 15-18 h. Com.	9-12½ h. Sec. 16-18 h. Sec.		9-12½ h. Sec.	8-9 h. H. J. Fleure	
Mercredi 29 Août		9-12½ h. Sec. 15-18 h. Com.	9-12½ h. Sec. 15-18 h. Com.				8-9 h. H. L. Shuttleworth	
Jeu 30 Août		9-12½ h. Sec. 15-18 h. Com.	9-12½ h. Com. 15-16 h. Com.				8-9 h. L. A. Boyd	
Vendredi 31 Août	Séance générale de clôture à 11 h. dans la salle de la Société des Sciences de Varsovie							

Figure 8. Agenda of the 14th IGU Congress

Source: IGU 1935: 132.

TABLEAU DES RÉCEPTIONS, EXPOSITIONS ET EXCURSIONS PENDANT LE CONGRÈS.										
	Mercredi 22 Août	Jeu 23 Août	Vend 24 Août	Samedi 25 Août	Dimanche 26 Août	Lundi 27 Août	Mardi 28 Août	Mercredi 29 Août	Jeu 30 Août	Vend 31 Août
MATIN		11 h. Séance d'ouverture du Congrès	⊙ Excursion en ville (pour les Dames)		Excursions scientifiques C ₁ , C ₂ , C ₃ , C ₄	⊙ Visite du Musée ethnographique et de l'Inst. de Propag. d'Art. (I. P. S.)	⊙ B. G. K. et l'exposition „la Pologne et les Polonais dans le monde“.	⊙ Musée Krański (Okólnik) et „l'Industrie Artisanale“ (Tamka)	⊙ Excursions par groupes. 1. Ecoles 2. Institut National d'Hygiène 3. Coopérative de petits logements.	11 h. Séance de clôture (Palais Staszic, N. Świat 72)
APRÈS-MIDI		⊙ 16 h. Thé des Dames au Café S. I. M. (11 r. Królewka)	⊙ 16 h. Réunion des Dames au Centre d'Education Physique (C. I. W. F.) à Bielany		Excursions touristiques à Łowicz et à Wilanów	⊙ 16 h. Visite de Łazienki. Thé à Oaza (pour les Dames)	⊙ 17 h. à 19 h. Five O'clock tea chez Mme la Baronne Lesser sur invitations spéciales (11-b rue Koszykowa)	⊙ 16 h. Thé des Dames au Yacht Club (Wybrzeże Kosciuszki)		
SOIR	21 h. Réunion des membres du Congrès à l'Hôtel Europejski	Réception au Château Royal offerte par S. Exc. le Président de la République pour les membres étrangers du Congrès.		20 h. 30. Concert de musique polonaise - Conservatoire (Okólnik 1)		21 h. 30. Réception à la Présidence du Conseil des Ministres	21 h. Soirée des danses artistiques à l'Opéra	21 h. Réception offerte à l'Hôtel de Ville par la ville de Varsovie (Pl. Teatralny)	21 h. Banquet à Rurska Obywatelska pour les délégués officiels 23 h. Bal à l'Hôtel Bristol	

Figure 9. Timetable of social events, exhibitions and excursions during the 14th IGU Congress

Source: IGU 1935: 133.

Table 1. Eminent geographers participating in the Congress

Country	Representatives
Belgium	Paul L. Michotte, Omer Tulippe
France	Lucien Aufrère, Henri Baulig, Abel Briquet, André Cholley, Pierre Deffontaines, Albert Demangeon. Pierre George, Théodore Lefebvre, Emmanuel de Martonne, Maurice Pardé, Maximilien Sorre
Germany	Julius Büdel, Max Eckert, Norbert Krebs, Ludwig Mecking, Paul Woldstedt ¹
Hungary	Pál Teleki
Italy	Roberto Almagià, Giotto Dainelli, Michele Gortani, Giuseppe Nangeroni
Japan	Tubin Odauti
Netherlands	Willem E. Boerman
Soviet Union	Nikołaj N. Barański, Julij M. Shokalsky
Sweden	Alfred Söderlund, Helge Stalberg
Switzerland	Charles Biermann, Charles Schneider
UK	Charles Close, Charles Bungay Fawcett, Harold St. John Loyd Winterbotham
USA	Isaiah Bowman, Erwin Raisz
Yugoslavia	Borivoje Z. Milojević, Pavle Vujević

¹ Professor Paul Woldstedt, the eminent German geologist and geomorphologist, was friends with the Head of the Institute of Geography of the Jagiellonian University, Professor Jerzy Smoleński. The two spent much time together during the Congress. Five years later, during the Second World War, Professor Smoleński was murdered at the Sachsenhausen concentration camp. At the news Professor Woldstedt rallied to help his widow and helped her to obtain special papers from the Gestapo to travel to Berlin. She arrived on 6 January 1940 with her son Stanisław, a priest, later to become bishop. In Berlin, Paul Woldstedt took care of them and used his connections to facilitate their visit to Sachsenhausen Camp where they could view the body of Professor Smoleński. This was a truly unique event and certainly one of very few cases when a German dared to intervene with the Gestapo for the sake of a Pole. The remains of Jerzy Smoleński were cremated and the German scholar saw to it that the urn sent to Mrs Smoleńska really contained her husband's ashes. After the war, Professor Paul Woldstedt maintained contacts with a student of Professor Jerzy Smoleński – Mieczysław Klimaszewski.

Approximately 250 presentations were made during the Congress and the French delegation accounted for the largest number of these. The participants participated in one of six sections: cartography, physical geography, human geography, prehistoric geography, history of geography and historical geography, landscape geography and teaching of geography (Tab. 2).

Table 2. Sections of the 14th IGU Congress in Warsaw

No.	Section	Chairperson	Host
1.	Cartography	I.G. Stresse (USA), Harold S.L. Winterbotham (UK)	Col. Tadeusz Zieleniewski (land surveyor, cartographer, Commander of Military Institute of Geography)
2.	Physical geography	Henri Baulig (France), Julij M. Shokalsky (Soviet Union)	Prof. Stanisław Lencewicz (geographer, Warsaw University)
3.	Human geography	Charles Bungay Fawcett (UK)	Prof. August Zierhoffer (geographer, Jan Kazimierz University, Lvov)
4.	Prehistoric and historical geography, history of geography	Roberto Almagià (Italy)	Prof. Władysław Semkowicz (historian, Jagiellonian University)
5.	Landscape geography	Ludwig Mecking (Germany)	Prof. Jerzy Smoleński (geographer, Jagiellonian University)
6.	Didactics and methodology of geographical education	Paul L. Michotte (Belgium)	Konstanty Bzowski (geographer, Association of Polish Geography Teachers)

The cartographers mainly discussed ways of representing ground relief on maps and *via* aerial remote sensing. One of the popular topics was the methodology of making cartograms and composite maps. This section involved 40 presentations.



Figure 10. Opening ceremony of the 14th IGU Congress in the Hall of Warsaw Polytechnic with the participation of the President of Poland Ignacy Mościcki (in armchair)

Source: IGU 1935 : 101.

In the physical geography section there were 79 presentations mostly devoted to Quaternary research. Other topics included fossilized erosion surfaces and river and marine terraces.

The human geography section (82 presentations) focused on industry, urban geography (especially physiognomy), overpopulation and rural settlement. Polish geographers won some popularity in the last of the topics. Stanisław Pawłowski and Józef Czekalski were applauded for their settlement maps of Poland (1:500,000) depicting the concentration and dispersion of villages around the country. Detailed case studies in this area were presented by Julian Czyżewski (south-eastern Poland), Stanisław Leszczycki and Stanisława Zajchowska (Western Carpathian Mts.), Maria Kielczewska (Pomerania), Bogdan Zaborski (Vilnius and surroundings), Tadeusz Senik (Roztocze).

The Warsaw Congress added a session to the regular congress agenda covering the host country's geography. The Polish Day

(24 August) involved lectures by eminent scholars, including geographers, geologists, historians and ethnologists. The most impressive were contributions by Eugeniusz Romer on the fundamental issues of human geography in Poland and by Mieczysław Limanowski on the geographical significance of the five largest Polish cities, including Poznań, Krakow, Lvov, Vilnius and Warsaw (Lencewicz 1934/1935). There was also a series of lectures delivered by the most eminent geographers from various countries.

In between sessions, the participants had an opportunity to visit various schools in Warsaw, including elementary and secondary schools, a school of commerce and the National Institute of Hygiene. The visitors were particularly impressed by the equipment and teaching methods in the geography laboratory at the Ministry of Religious Confessions and Public Enlightenment located at the Pedagogical Museum and headed by Gustaw Wuttke, Michał Janiszewski and Jadwiga Peretiatkiewicz. The visitors

committed themselves to spreading information about the laboratory in their own countries (Polaczówna 1935).

Social occasions were very popular. After the reception at the Royal Castle there were similar events at the Council of Ministers, the Town Hall (hosted by the Mayor Stefan Starzyński and his wife) and at the commercial association *Resursa Obywatelska*¹ organised at the end of the Congress and linked with a grand ball at the Bristol Hotel. A concert was also organised with eminent musicians playing at the Warsaw conservatory.

The Polish Geographic Society minted a special commemorative medal bearing an image of the geographer Wacław Nałkowski and a Latin inscription. Silver versions of the medal were handed to Isaiah Bowman, Emmanuel de Martonne, Eugeniusz Romer and Stanisław Pawłowski, while all other participants received bronze versions.

During the closing ceremony, Eugeniusz Romer summarised the accomplishments of the Congress. Its proceedings were then published in four volumes between 1935 and 1938 under the collective title *Comptes Rendus du Congrès International de Géographie. Varsovie 1934* (Lencewicz 1934/1935) (Fig. 11).

During one of the two IGU sessions, Eugeniusz Romer was again elected Vice-President. Other Polish geographers elected to various committees included Stanisław Pawłowski, Józef Czekalski, Stanisław Lencewicz, Julian Czyżewski and Henryk Arctowski. The delegates also voted on several motions that were tabled. Two of the decisions are worth mentioning here: 1. The Joachim Lelewel Society was established with the aim of conducting research into the history of geography (named after a great Polish historian and social thinker), and 2. An appeal was

extended to national governments to introduce the topic of geography in schools of all types and levels due to its outstanding pedagogical value (IKC 1934b: 5).

A number of cartographic exhibitions were arranged to accompany the Congress. They included an International Exhibition of Contemporary Cartography at Warsaw Polytechnic curated by Jerzy Lewakowski (Military Institute of Geography), an exhibition of the cartographic collection of the National Library with a trio of curators: Karol Buczek, Bolesław Olszewicz and Jan Stebnowski, an exhibition about the process of map production with Tadeusz Krzanowski (Military Institute of Geography), an exhibition of contemporary Polish cartography organised by Stanisław Pietkiewicz (Warsaw University) and an international map exhibition. An art exhibition "Poland and its People" was opened at the Zachęta Art Gallery. Polish and French catalogues were also published on all of these exhibitions. The catalogue of the exhibition of the

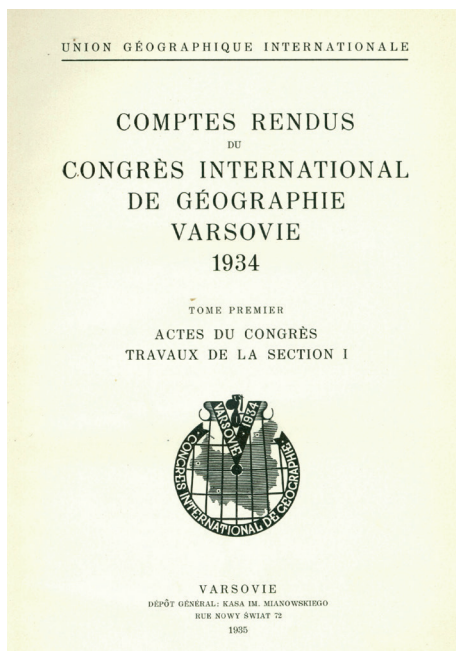


Figure 11. Title page of the 1st volume *Comptes Rendus du Congrès International de Géographie, Varsovie 1934* (IGU 1935)

¹ *Resursa Obywatelska* in Warsaw, a building erected in 1860-1861 at Krakowskie Przedmieście Street 64. Between 1861 and 1939 this was the HQ of *Warszawska Resursa Kupiecka*, or Warsaw Association of Commerce. It burned down during the Nazi German invasion of Poland in September 1939 and was rebuilt during 1948-1950.

National Library collection was prepared by Karol Buczek and Bolesław Olszewicz.

The International Exhibition of Contemporary Cartography, the first of its kind in the world, was organised on a Polish initiative and President Ignacy Mościcki was present during the opening ceremony (Fig. 12). Organisations invited included official national (military) cartographic, topographic and geographic institutions. Altogether 35 countries contributed more than 2500 exhibits. The Polish section stood out for its quality. The exhibition had three objectives:

- to show various types of topographical maps used in different countries,
- to present the main types of physical and cultural landscape, and
- to demonstrate the development of the main types of topographical maps.

After the closing of the exhibitions the exhibits were donated to the Polish National Library and Military Institute of Geography (Lewakowski 1934, Pietkiewicz 1934/1935).

The exhibition of the National Library's cartographic collection was divided into four main sections:

- general maps of Poland prior to the partitions (until 1795);
- general maps of historical Poland (1795–1918);
- detailed maps of Poland prior to the partitions; and
- general maps of historical Poland up until 1918. Many of the maps were manuscript copies.

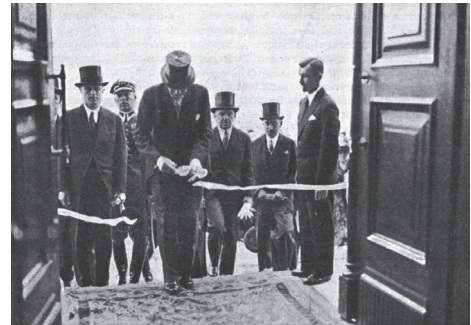
A separate stand concentrated on works by Joachim Lelewel (Stebnowski 1934/1935).

The Polish cartography exhibition included items from the period 1918–1934. Four hundred map sheets on display came from the Polish Geological Institute, Carpathian Geological and Oil Institute, Polish Academy of Arts and Sciences, Polish Meteorological Institute, Hydrographic Service, Main Statistical Office, various universities, Eugeniusz Romer's Cartographical Institute, Pomoc

a



b



c



Figure 12. (a) Opening of the International Exhibition of Contemporary Cartography, Warsaw Polytechnic. Eugeniusz Romer is speaking and Ignacy Mościcki, President of Poland, is seated in an armchair. (b) Second from the right is the Minister of the Treasury Władysław Marian Zawadzki, deputy to the Prime Minister (holding white gloves), (c) International Exhibition of Contemporary Cartography, the US exhibit

a. Source: National Digital Archives (Narodowe Archiwum Cyfrowe), NAC 1-M-521-4

b. Source: IGU 1935: 75.

c. Source: IGU 1935: 75.

Szkolna publishing house, and the Polish Teachers' Union. Additionally, Bogdan Zaboriski also presented his cartographic products. The maps main themes were geological, geomorphological, meteorological, hydrological, maritime, economic, and demographic, as well as soils, transport and tourism. More than one hundred maps were presented by the Książnica-Atlas publishing house, the dominant player in the school section (Pietkiewicz 1934/1935).

Twelve regional and thematic excursions were organised (Tab. 3, Fig. 13) with 244 participants. Three of these, all longer than one day, took place before the Congress with 62 participants (Fig. 14). During the Congress there were three single day trips with 106 participants altogether. Four more trips were organised after the Congress and these had 76 participants (Fig. 15). All the trips were accompanied by quality guidebooks which are still highly regarded by geographers today (Fig. 16).

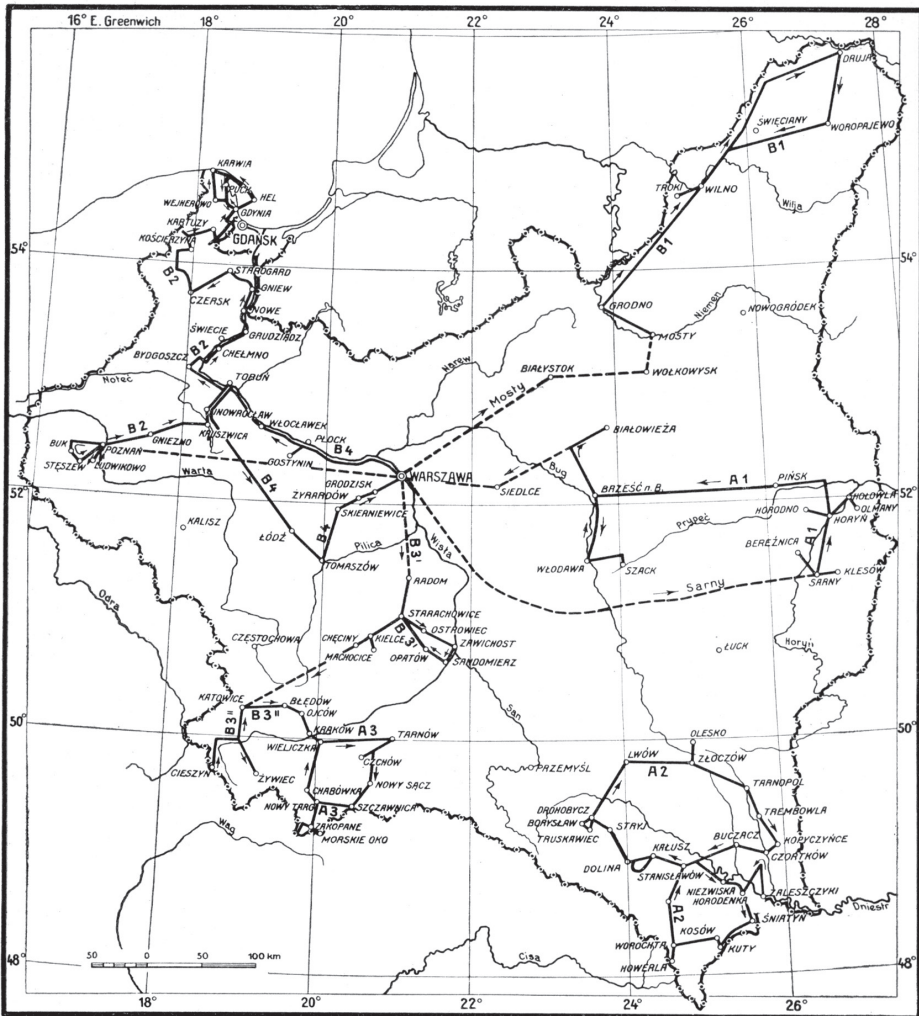


Figure 13. Routes of excursions accompanying the 14th IGU Congress

Source: IGU 1935: 81.

Table 3. Excursions

	Region	Duration (days)	Leader	Participants
Before the Congress	Polesie and Białowieża	7	Stanisław Lencewicz, Stanisław Pawłowski	15
	Podole and Eastern Carpathian Mts.	9	Julian Czyżewski, August Zierhoffer	14
	Krakow, Dunajec Valley, Tatras	8	Jerzy Smoleński	33
During the Congress	Vistula Valley near Płock	1	Stanisław Lencewicz	39
	Vistula Valley near Warsaw	1	Jan Lewiński	17
	Puławy and Kazimierz	1	Bogdan Zaborski	25
	Tour of Warsaw	1	Regina Danysz-Fleszarowa	25
After the Congress	Northeastern Poland, Neman and Daugava river basins	5	Mieczysław Limanowski	13
	Pomerania and the Baltic coast	7	Stanisław Pawłowski	26
	Łysogóry Mts. – Harz-age core and Mesozoic covers	5	Stanisław Lencewicz	17
	Polish Upper Silesia	4	Wiktor Ormicki	10
	Vistula valley, industrial towns and spas	6	Jerzy Loth	10

Source: based on Lencewicz 1934/1935.

A number of special events and publications accompanied the Congress. They included a two-volume book *Ruch regionalistyczny w Europie*² (The Regionalist movement in Europe), which included a chapter on *Geographic regionalism and its development in Poland* by Stanisław Pawłowski and *Economic regionalism in Poland* by Wiktor Ormicki. A special session was devoted to the 40th anniversary of Eugeniusz Romer's career in geography and he was presented with a specially dedicated book *Zbiór prac poświęcony przez Towarzystwo Geograficzne we Lwowie Eugeniuszowi Romerowi w 40-lecie jego twórczości naukowej*³ (A collection of papers devoted to Eugeniusz Romer by the Geographical

Society of Lvov to celebrate his 40 years of scientific creativity). This nearly 700 page long collection was edited by Henryk Arctowski and included contributions by Polish and foreign geographers, most of whom also took part in the Congress.

The 14th IUG Congress was rated very highly by the Union's governing bodies and participants alike. This was reflected in the numerous reports of the event, scholarly and other, in the world's periodicals. By far the largest body of such reports were published in Germany, although some were clearly biased. For example, accounts of excursions to areas formerly under the Prussian partition of Poland questioned the legitimacy of Poland's rule. The largest number of these reports referred to the excursion to Upper Silesia and to the related guidebook written by Jerzy Smoleński and Wiktor Ormicki. Reports from the Congress were published in France, Italy, the UK, Sweden, Lithuania, the USA, Bulgaria and Czechoslovakia.

² PATKOWSKI A. (ed.), 1934. *Ruch regionalistyczny w Europie*. Warszawa: Wydawnictwo Sekcji Regionalistyczno-Krajoznawczej Związku Nauczycielstwa Polskiego.

³ UHORCZAK F., 1934. *Zbiór prac poświęcony przez Towarzystwo Geograficzne we Lwowie Eugeniuszowi Romerowi w 40-lecie jego twórczości naukowej*. Lvov: Towarzystwo Geograficzne.



Figure 14. Participants on the excursion to Krakow in the lecture hall of the Jagiellonian University. First from the right: Jerzy Smoleński

Source: National Digital Archives (Narodowe Archiwum Cyfrowe), NAC 1-M-522-1.

The Congress was praised first of all for the quality of its content and its great contribution to the development of science in general and to geography in particular. The good standard of organisation of the event was often quoted along with the quality of the presentations, which often led to several-hour long discussions afterwards. The excursions also garnered plaudits that noted the good selection of itineraries and the excellent preparedness of the leaders. The trips to Polesie,

Krakow and the Tatras, and to the Baltic coast impressed the participants the most.

Many of the post-Congress reports were devoted to the cartographic exhibitions. They highlighted the importance of the Polish initiative to organise a grand worldwide cartography



Figure 15. Participants on the excursion to south-eastern Poland at an excavation site at the Old Castle in Grodno. Second from the right (holding folded coat) Mieczysław Limanowski

Source: National Digital Archives (Narodowe Archiwum Cyfrowe), NAC 1-M-523-1.

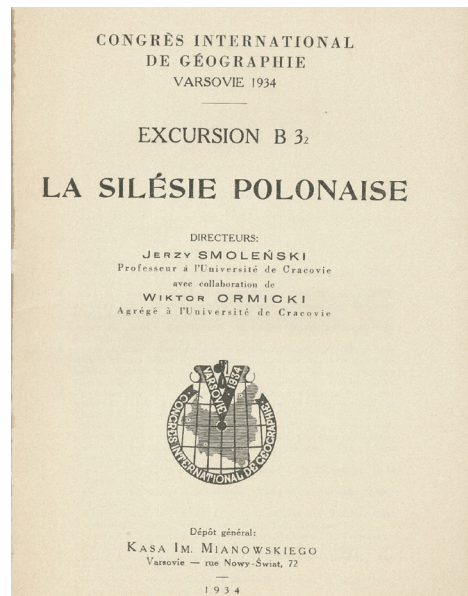


Figure 16. Title page of the guidebook for the excursion to Upper Silesia by Jerzy Smoleński and Wiktor Ormicki

event in Warsaw. Indeed, this was the first of its kind and the authors of the accounts suggested that future congresses continue with this idea (Czekalski 1934/1935; Kish 1979).

The Congress provided an excellent opportunity for the promotion of Poland. Each participant received numerous publications on Poland in foreign languages, as well as a full set of geographical studies published in Poland during the five years leading up to the event. Polish geographers proved that in many areas they had achieved at least as much as their international colleagues. Human geography was the leading such field (especially in terms of rural settlement), along with geomorphology. The world cartography exhibition proved that Polish achievements in this area, and especially the maps published by Military Institute of Geography, were world class and the technology used to produce them was no different to that used internationally. The participants had also an opportunity to visit some of the leading Polish geography centres (Warsaw, Krakow, Poznań and Vilnius).

On the occasion of the Congress, Stanisław Pawłowski wrote for the *Gazeta Polska* daily an article that provided a commentary on the contents of the proceedings. The article begins: "Geography has an enormous significance both internationally and in relation to individual states. There is only one Earth and there can only be one earth science. For more than two thousand years, this science was geography." He continues: "Geography is a science of communication and accord between nations. More than once, there were

champions of universal values and the brotherhood of peoples among geographers. Major fields within geography, such as cartography, physical geography and human geography, have been fulfilling the important role of uniting people. The edifice of geographical knowledge, erected by the joint effort of the world's nations, is serving everyone. And again: Geography has great merit in the service of and for humanity. Geography is also serving nations and states. (...) Geography offers a picture of the real possibilities for the development of countries and the kind of conditions that make this development possible."

"Knowledge about this piece of land where fate has placed societies is an indispensable step in the wise adaptation of humanity to natural conditions. Knowledge of the geography of other countries on earth, on the other hand, is the only serious foundation for the normalisation of interpersonal and international relations. Hence geography serves states and nations as few other sciences do." (Pawłowski 1934).

These words provide the best punch line for considering the importance of geography and geographical congresses in the process of stabilising interpersonal and international relations. Despite the 80 years that have passed since writing these words, they have lost none of their topicality.

Editors note:

Unless otherwise stated, the sources of tables and figures are the author(s), on the basis of their own research.

References

- CZEKALSKI J., 1934/1935. *Les échos du Congrès International de Géographie de Varsovie*. Przegląd Geograficzny, vol. 14, no. 3-4, pp. 188-194.
- IGU, 1935. *Comptes rendus du congrès international de géographie Varsovie 1934*. International Geographical Union conference publication, Warszawa: Kasa im. Mianowskiego.
- IKC, 1934a. *Ilustrowany Kurier Codzienny*. No. 235 (25 August), pp. 13-14.
- IKC, 1934b. *Ilustrowany Kurier Codzienny*. No. 243 (2 September), p. 5.
- KISH G., 1979. *Bibliography of International Geographical Congresses 1871-1976*. Boston: G.K. Hall.
- KISH G., 1992. *International Geographical Union: a brief history*. *GeoJournal*, vol. 26, no. 2, pp. 224-228.

- KOSIŃSKI L.A., 2008. *Międzynarodowa Unia Geograficzna* [in:] A. Jackowski, S. Liszewski, A. Richling (eds.), *Historia geografii polskiej*. Warszawa: Wydawnictwo Naukowe PWN, pp. 477-488.
- LECOMTE DE MARTONNE H., 1959. *Historie de l'Union Géographique Internationale et de Congrès internationaux de géographie*. The IGU – Newsletter, 10, pp. 3-20.
- LENCEWICZ S., 1934/1935. *Międzynarodowy Kongres Geograficzny w Warszawie*. Przegląd Geograficzny, vol. 14, no. 3-4, pp. 167-182.
- LEWAKOWSKI J., 1934. *Mapa – obraz ziemi i życia*. Tygodnik Ilustrowany, 37, pp. 729-730.
- PAWŁOWSKI S., 1934. *Na zamknięcie Międzynarodowego Kongresu Geograficznego w Polsce*. Gazeta Polska, ann. 6, no. 241.
- PIETKIEWICZ S., 1934/1935. *Międzynarodowa wystawa kartografii współczesnej*. Przegląd Geograficzny, vol. 14, no. 3-4, pp. 182-183.
- POLACZKÓWNA M., 1935. *Sprawozdanie z posiedzeń sekcji VI (Dydaktyki i metodyki nauczania) Międzynarodowego Kongresu Geograficznego w Warszawie 23-31/VIII 1934*. Czasopismo Geograficzne, vol. 13, no. 1, pp. 11-14.
- STEBNOWSKI J., 1934/1935. *Wystawa zbiorów kartograficznych Biblioteki Narodowej*. Przegląd Geograficzny, vol. 14, no. 3-4, pp. 184-187.
- ZIERHOFFER A., 1935. *Międzynarodowy Kongres Geograficzny w Warszawie*. Czasopismo Geograficzne, vol. 13, no. 1, pp. 1-10.