

# *Procrustomachia*

Occasional Papers of the Uncensored Scientists Group

9, 2: 39-45

Milanówek

14 VII 2024

ISSN 2543-7747

---

## Two new species of *Metataenia* (Coleoptera: Buprestidae: Chrysochroina) from New Guinea

Roman B. HOLYŃSKI

PL-05822 Milanówek, ul. Graniczna 35, skr. poczt. 65, POLAND

e-mail: [rbholynski@gmail.com](mailto:rbholynski@gmail.com)

*To Mari, my Good Genius, as a humble expression of  
gratitude for four marvellous decades of unshakable  
love, support and understanding.*

### Introduction

The genus *Metataenia* THY., as conceived currently by me, includes the subgenera *Marginicupta* HOL., *Metachuckia* HOL., *Paramroczkowskia* HOL., *Mroczkowskia* HOL., *Parachrysodema* THY., *Chalcomroczkowskia* HOL., *Metamroczkowskia* HOL., *Cyphogastrella* THY., *Papuodema* OBB., and *Metataenia* THY. s.str. (HOLYŃSKI 1997, 2014, 2022a,b,c). Of them, *Marginicupta* HOL., *Metachuckia* HOL., *Paramroczkowskia* HOL., *Parachrysodema* THY. and *Cyphogastrella* THY. are – according to current knowledge – monotypic, and of those containing more than one known species only *Metamroczkowskia* HOL. has been recently (HOLYŃSKI 2022a) revised, the content and internal structure of *Mroczkowskia* HOL., *Chalcomroczkowskia* HOL., *Papuodema* OBB. and *Metataenia* THY. s.str. remain untouched, and many unnamed species are waiting for description and classification. In the present paper I provide – as preliminary contribution to my planned review of *Papuodema* OBB. and *Metataenia* THY. s.str. – diagnoses of two new species belonging to these subgenera; this being a “jubilee” paper (issued exactly on 40<sup>th</sup> anniversary of our wedding-day), the species names have been combined from parts of our personal names.

### Conventions:

Labels of type-specimens are quoted as exactly as possible, including *italics* and *handwriting* (both represented in my text by *italics*), CAPITAL LETTERS, SMALLCAPS, framing, colour of text and approximate colour of the label. Individual labels are cited in quotation marks “”, rows on labels separated by ||. Determination (white, in the form like “*Metataenia romari* HOL., det. R. HOLYŃSKI” with year of determination written vertically on the left side) and type-designation [red for primary types, e.g. “*Metataenia maromi* HOLYŃSKI, HOLOTYPE”, green for paratypes: “*Metataenia maromi* HOLYŃSKI, PARATYPE”] labels added by me are not cited.

### Collection acronyms:

**BPBM** = Bernice P. Bishop Museum, Honolulu, Hawaii, USA  
**RBH** = Roman B. HOLYŃSKI, Milanówek, POLAND

For explanation of other terms, abbreviations &c. please – if needed – consult HOLYŃSKI (2022a).

**BUPRESTIDAE LEACH**  
**BUPRESTINAE LEACH**  
**BUPRESTINI LEACH**  
**CHRYSOCHROINA CAST.**  
*Metataenia* **THY.**  
*Papuodema* **OBB.**

*Papuodema* OBENBERGER 1928: 145  
[type-species: *Papuodema quadristigma* OBENBERGER 1928: 146]

**Remarks:** Small (2 or 3 known species) group characterized by combination of modest (<20 mm.) size, non-sulcate pronotal midline, continuous (not disrupted into rows of punctures) elytral striae, and especially – to my knowledge, unique among the **Chrysochroina** CAST., although resembling structures observed in some remotely related taxa, e.g. sg. *Deyrollilus* HOL. of *Agrilus* CURT. – pair of bladelike tubercles on 2. sternite in male. The area of distribution seems restricted to eastern New Guinea north of the main watershed.

**Key to the identification of species of the sg. *Papuodema* OBB.**

- 1 (2) Dorsal side dark green ..... *M. (P.) quadristigma* (OBB.)
- 2 (1) Body (except dfp foveae) entirely black ..... *M. (P.) romari* sp.n.

***Metataenia* (s.str.) *romari* sp.n.**

**Material examined:**

**Holotype:** “Toma Boom // mambare River // North New Guinea // June 28 1970” [♂ (RBH: BPepv)]

**Additional material:** None

**Holotype:** [Fig. 1]. Male 15×5 mm. Body lustrous black; pronotal and elytral dfp depressions cupreous; antennae piceous black, tarsi dark brownish-ferruginous. Non-dfp areas of ventral surface with rather long, semierect, but very sparse and inconspicuous pilosity; dfp depressions covered with very dense recumbent pubescence and white pulverulence, otherwise body practically glabrous.

Epistome deeply subtriangularly emarginate, with rather deep foveola on each side; epistomal ridge very fine, straight; supraepistomal carina very irregular, deeply V-shaped. Front *ca.* as wide as long, sides markedly divergent; frontal depression broad, paraboloidal, reaching far beyond upper margins of eyes, sparsely irregularly punctured; anterior cavity deep, transversely ovate; median stria deep and coarse; vertex finely and sparsely punctulate, V:H≈0.5. Basal antennal joint short, *ca.* 2.5× longer than thick; 2. cylindrical, as wide as long, somewhat thinner than 1.; 3. barely widened towards apex, there as thick as, but *ca.* 3× longer than, 2.; 4. elongately rhomboidal, as long as 3. but twice wider apically; 5.-9. progressively shorter and more rhomboidal, 10. and 11. missing.

Pronotum trapezoidal (BW:AW:L≈1.7:1.05:1); sides very slightly but regularly arcuate; basal margin inconspicuously bisinuate with very broad medial lobe; basal angles acute; apical margin more distinctly bisinuate; anterolateral angles almost right; no distinct collar. Disk rather finely and sparsely irregularly punctured; median line marked as irregular narrow impunctate space; fossae deep, elongately ovate; marginal carina marked only in basal fourth otherwise totally obliterated. Scutellum small, trapezoidal, regularly convex, impunctate.

Elytra not caudate, shortly obliquely truncated at humeri, with no trace of subhumeral denticle; sides subparallel in anterior fourth, shallowly sinuate to midlength and cuneately tapering to apices; lateroapical margins sharply and coarsely denticulate. Three (at base, at anterior fourth, and slightly behind midlength) pairs of dfp depressions closer to lateral margins than to suture; elytra regularly striate, no trace of costae; interstriae impunctate.



**Fig. 1**

*Metataenia (Papuodema) romari* sp.n.

♂ HT [BPepv], E-New Guinea: Toma on the Mamare riv.

Sulcus of prosternal process poorly delimited, rather finely and sparsely, very irregularly punctured; punctulation of proepisterna also fine and sparse; 2.-5. sternites with transverse dfp depressions on sides at anterior margins; puncturation of rest of undersurface very fine and sparse. Basal abdominal segment broadly depressed, in apical half medially furrowed; second sternite with pair of sharp angular blades at midline of basal half, separated by narrow but flat-bottomed space and flanked with pair of deep elongately ovate foveolae; apex of anal sternite broadly and deeply paraboloidally emarginate. Aedoeagus yellow, rather robust, sides of parameres almost regularly arcuate, apical part of penis in form of arrowhead.

**Geographical distribution:** The type locality is in the Northern Prov. of Papua New Guinea, ca. 65 km NW Popondetta, 73 km. SSE Morobe.

**Remarks:** According to the original description *M. quadristigmosa* (OBB.), unknown to me in nature, differs in having pronotum with lateral carina developed in basal half and without any trace of median relief.

### *Metataenia* THY. s. str.

*Metataenia* THÉRY 1923: 216

[type-species: *Metataenia meeki* THÉRY 1923 (= *Paracupta meeki* KERREMANS 1919)]

**Remarks:** *Metataenia* THY. s.str. is a small group of several (mostly unnamed) blackish (rarely dark bronzed, with no or but slight metallic lustre) species, characterized by combination of yellow tarsi (and usually also part – at least extreme tips – of tibiae), sulcate median line of pronotum, elytral dfp markings (if present) rounded, &c. Representatives of this subgenus are known from northern and eastern New Guinea (SE of Humboldt Bay).

#### Abbreviated key to the identification of species of the sg. *Metataenia* THY. s.str.

- 1 (6) Length of body <20 mm.
- 2 (3) Pronotal fossae small but deep; only extreme tips of tibiae ferruginous ..... *M. (s.str.) meeki* (KERR.)
- 3 (2) Fossae not developed; at least tibiofemoral joint areas yellow
- 4 (5) Legs entirely yellow ..... *M. (s.str.) pilosa* HOL.
- 5 (4) Femora and tibiae, except tibiofemoral joints, black ..... *M. (s.str.) maromi* sp.n.
- 6 (1) Length of body >20 mm.
- 7 (8) Body dark (ventral side paler) bronzed ..... *M. (s.str.) gilvogeniculata* HOSCH.
- 8 (7) Body black
- 9(10) Elytral dfp spots prominent ..... *M. (s.str.) quadriplagis* (OBB.)
- 10 (9) Elytra with no trace of dfp spots ..... *M. (s.str.) quoqueversa* HOL.

#### *Metataenia (s.str.) maromi* sp.n.

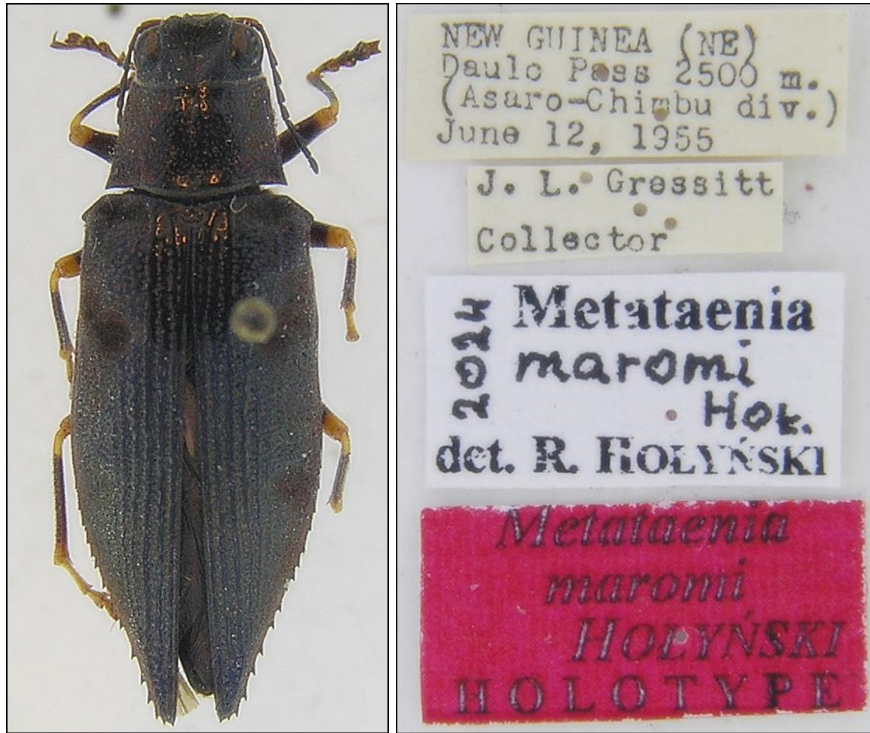
##### Material examined:

**Holotype:** “NEW GUINEA (NE) || Daulo Pass 2500 m. || (Asaro-Chimbu div.) || June 12, 1955”  
“J.L.Gressitt || Collector” [♀ (BPBM)]

**Paratype:** “NEW GUINEA: NE, || Moife, 2100 m. || 15 km NW of Okapa || Oct. 7-14, 1959”  
“T.C. Maa || Collector || BISHOP” [1♀ (RBH: BPlxn)]

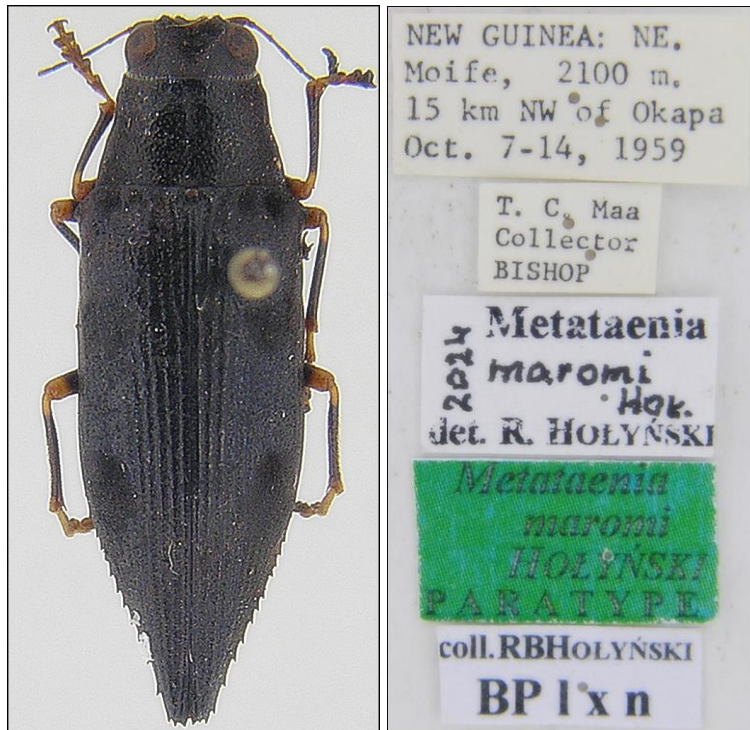
**Additional material:** None

**Holotype:** [Fig. 2]. Female 18×5.5 mm. Body lustrous (more so than suggested by photo) black, ventral side with bronzy reflexions; elytral foveae practically not distinguishable by colouration; antennae and legs black, only 1. antennomere dark ferruginous, femora and tibiae at both ends as well as basal parts of (especially proximal) tarsal joints contrastingly yellow. Prosternal process sparsely covered with very fine, rather long, erect white pilosity, which on metasternum and abdomen becomes distinctly inclined backwards or (sides of abdomen) semirecumbent; ventral dfp depressions densely, finely, recumbently pubescent and



**Fig. 2**

*Metataenia (Papuodema) maromi* sp.n.  
 ♀ HT [BPBM], E-New Guinea: Daulo Pass



**Fig. 3**

*Metataenia (Papuodema) maromi* sp.n.  
 ♀ PT [BPepv], E-New Guinea: Moife ad Okapa

covered with rufous pulverulence; elytra with rather sparse (denser only at sides of apical parts), very fine (barely discernible at 8× magnification) setulation; otherwise body practically glabrous.

Epistome short, rather deeply trapezoidally emarginate; epistomal ridge inconspicuous; supraepistomal shallowly irregularly angular. Front definitely wider than long, sides markedly divergent; frontal depression broad, somewhat elongately paraboloidal, reaching far beyond upper margins of eyes, coarsely but rather sparsely irregularly punctured; anterior cavity barely indicated; median stria deep and coarse; eyes markedly convex, distinctly projecting outwards; vertex rather coarsely but sparsely punctured, V:H≈0.55. Antennae thin, basal antennomere club-shaped, *ca.* 4× longer than thick; 2. cylindrical, about as wide as long, somewhat thinner than 1.; 3. barely widened towards apex, there as thick as, but *ca.* 4× longer than, 2.; 4. elongately triangular, as long as 3. but by half wider apically; 5.-10. progressively shorter and more rhomboidal, 10. 1.5× longer than wide; 11. by half longer than 10., asymmetrically ovate.

Pronotum transversely trapezoidal (BW:AW:L≈1.75:1.3:1); both basal and apical margins shallowly bisinuate; basal angles markedly divergent and sharply acute; anterolateral angles almost right before very short but distinct collar. Disk rather coarsely and densely – towards sides still denser – irregularly punctured; median sulcus deep but narrow; no trace of fossae or other depressions; marginal carina shortly before base sharp, otherwise irregular, sparsely but rather coarsely punctured. Scutellum somewhat transversely trapezoidal, regularly concave, impunctate.

Elytra almost imperceptibly subcaudate, shortly obliquely truncated at humeri, with prominent subhumeral denticle; sides slightly divergent to midlength and then cuneately tapering to narrowly acute apices; lateroapical margins sharply and coarsely denticulate. Three (at base, at anterior fourth, and slightly behind midlength) depressions neither truly dfp nor clearly distinctive in colour or sculpture (more conspicuous on picture than in nature); elytra otherwise regularly convex, no trace of costae; punctured striae rather deep and regular on inner but confused on lateral half; punctulation in medial striae fine but dense, interstriae convex and impunctate; on sides entire surface covered by coarse, irregular, partly rugose sculpture.

Sulcus of prosternal process rather finely but very densely punctured, proepisterna, metepisterna, lateral halves of metacoxae, and rounded depressions on sides of 2.-5. sternites dfp; puncturation of rest of undersurface sparse, rather fine. Basal abdominal segment shallowly sulcate along midline, inconspicuous median depression discernible also on 2. sternite; apex of anal sternite narrowly regularly rounded.

**Variability:** Paratype [Fig. 3] almost identical in size (18.5×6 mm.), colouration, sculpture and other essential aspects, the only noticeable difference being basal angles of pronotum not projecting outwards.

**Geographical distribution:** Known only from NW-vicinities of Okapa (Eastern Highlands Pr., PNG).

**Remarks:** From *M. meecki* (KERR.) differs at glance in much larger, shallower and less conspicuous elytral depressions, from *M. pilosa* HOL. in but partly yellow legs and regularly striate inner portions of elytra, from *M. gilvogeniculata* HOSCH., *M. quadriplagis* (OBB.) and *M. quoqueversa* HOL. in being much smaller.

### Acknowledgements

It is my great pleasure to express heart-felt gratitude to my beloved Wife, Maria HOLYŃSKA, whose unchanging encouragement, support and forbearance has enormously contributed to the effects of my work.

### Literature:

- HOLYŃSKI R.B. 1997. *Mroczkowskia*-knot and the evolution of the subtribe Chrysochroina (Coleoptera: Buprestidae). *Ann. Zool.* **47**, 1-2: 179-188
- HOLYŃSKI R.B. 2014. New subgenus and three new species of the genus *Metataenia* THÉRY (Coleoptera: Buprestidae). *Genus* **25**, 3: 393-402
- HOLYŃSKI R.B. 2022a. Review of the subgenus *Metamroczkowskia* HOL. of *Metataenia* THY. (**Coleoptera: Buprestidae**) (with remarks on paraphyly). *Procrustomachia* **7**, 3: 43-66
- HOLYŃSKI R.B. 2022b. Two new species of *Metataenia* (*Mroczkowskia* HOL.). *Procrustomachia* **7**, 4: 67-72
- HOLYŃSKI R.B. 2022c. *Metataenia quadriplagis* OBB.: (**Coleoptera: Buprestidae: Chrysochroina**): lectotype designation, redescription and key. *Procrustomachia* **7**, 5: 75-79

---

**Open access**

Edited, published and distributed by:  
Informal *Uncensored Scientists Group*  
c/o Roman B. HOLYŃSKI

PL-05822 **Milanówek**, ul. Graniczna 35, skr. poczt. 65, **POLAND**  
e-mail: [rbholynski@gmail.com](mailto:rbholynski@gmail.com)