

POLISH BOTANICAL STUDIES
1990 • GUIDEBOOK SERIES • No. 1

Polish Herbaria

by

Zbigniew Mirek



KRAKÓW

POLISH ACADEMY OF SCIENCES
W. SZAFER INSTITUTE OF BOTANY

Polish Herbaria

by

Zbigniew Mirek



KRAKÓW

POLISH ACADEMY OF SCIENCES
W. SZAFER INSTITUTE OF BOTANY

Guidebook Series is an irregularly issued supplementary series of *Polish Botanical Studies* intending to publish guides to Polish botanical institutions, collections and collectors, botanical literature, and directories as well as botanical field-guides and basic information regarding various branches of botany

Editor-in-Chief : Zbigniew MIREK
Editorial assistant : Jan J. WÓJCICKI
Editorial Board : Krystyna GRODZIŃSKA
Andrzej JANKUN
Leon STUCLIK
Jan J. ZAWADZKI
Make-up editor : Marian WYSOCKI

Editorial Office : W. Szafer Institute of Botany, Polish Academy of Sciences
Lubicz 46, PL-31-512 Kraków, Poland

CIP - Biblioteka Narodowa

MIREK, Zbigniew:

Polish Herbaria / by Zbigniew Mirek. - Kraków: Polish
Academy of Sciences. W. Szafer Institute of Botany,
1990 - (*Polish Botanical Studies. Guidebook Series; No. 2*)

Copyright © W. Szafer Institute of Botany, Polish Academy of Sciences

All Rights Reserved

No part of this book may be reproduced for collective use in my part by photostat, microfilm, or in any other means, without written permission from the publisher.

Published, sold and distributed by W. Szafer Institute of Botany, Polish Academy of Sciences
Lubicz 46, PL-31-512 Kraków, Poland

Issued: 1990
Printed in Poland

DKK zam. 122/91 nakł. 1.200 szt.

ISBN: 83-00-03272-X
ISSN: 0867-0749

POLISH HERBARIA

ZBIGNIEW MIREK

MIREK Z. 1990. Polish Herbaria. *Polish Botanical Studies. Guidebook Series 2: 3-73*. Kraków. PL ISSN 0867-0749.

Polish plant collections with total amount of *ca* 3.5 million numbers gathered in 54 institutional herbaria and nine private. Only twelve of them were listed in the last issue of 'Index Herbariorum'.

W opracowaniu scharakteryzowano polskie zbiory zielnikowe liczące w sumie około 3,5 mln numerów zgromadzonych w 54 zielnikach należących do różnych instytucji państwowych i w 9 będących własnością prywatną. Jedynie 12 spośród nich wymienia ostatni międzynarodowy „Index Herbariorum”.

Zbigniew Mirek. Institute of Botany, Polish Academy of Sciences, Lubicz 46, PL-31-512 Kraków, Poland

Contents • Treść

Introduction – Wprowadzenie	4
Institutional herbaria	18
Private herbaria	65
Index to persons	68
Index to important collections (names of collectors and geographical regions)	72

A review of the plant collections in Polish herbaria presented in the following directory is based on the data gathered by the Committee of Botany of the Polish Academy of Sciences in 1984. They have been subsequently supplemented and updated by the author (Tab. 1). As a result, information on 54 institutional and nine private herbaria have been completed. In comparison to the latest issue of 'Index Herbariorum' (Holmgren *et al.* 1981), which includes information on twelve Polish herbaria only, this is a considerable increase of particulars on other herbaria in the country.

The institutional herbaria in Poland are associated with universities (15), agricultural academies (14), regional museums (8), teachers colleges (5), the Polish Academy of Sciences (4), medical academies (3), the Ministry of Forestry (3) and others (2). They are located in 30 towns and spread more or less evenly throughout the country (Fig. 1). The majority of them was established after the World War II (Fig. 2) and these are mostly small herbaria. Only a few older herbaria are relatively larger ones (Fig. 3). The largest botanical collections are presently in Kraków, which is the main botanical centre in the country. Altogether in this town five institutional and three private herbaria total over 1 million specimens (Fig. 4). In totals Polish herbaria hold approximately 3.411.000 sheets including about 2.525.668 sheets

Charakterystyka polskich zbiorów zielnikowych zawarta w niniejszym opracowaniu oparta jest na informacjach zebranych przez Komitet Botaniki PAN w 1984 roku oraz danych ankietowych uzyskanych przez autora opracowania. W wyniku otrzymano informacje o 54 zielnikach związanych z instytucjami państwowymi, spośród których tylko 12 wymienia ostatni „Index Herbariorum” (Holmgren *in.* 1981), oraz o 9 zielnikach prywatnych (Tab. 1).

Wspomniane 54 zielniki związane są z następującymi instytucjami: uniwersytety (15), akademie rolnicze (14), wyższe szkoły pedagogiczne (5), akademie medyczne (3), muzea regionalne (8), placówki PAN (4), placówki podległe Ministerstwu Leśnictwa (3) oraz inne (2). Wszystkie wspomniane zielniki grupują się w trzydziestu ośrodkach i są mniej więcej równomiernie rozmieszczone na terenie kraju (Ryc. 1). Większość z nich to zbiory młode, powstałe dopiero po II wojnie światowej (Ryc. 2). Zaledwie kilka zielników posiada większe zbiory (Ryc. 3). Pod względem sumarycznej wielkości zbiorów (Ryc. 4), największą kolekcję posiada Kraków (wraz z zielnikami prywatnymi około 1 000 000 arkuszy). Całość polskich zbiorów liczy 3 411 647 arkuszy, w tym 2 525 668 stanowią rośliny naczyniowe, 446 320 – mszaki, 205 703 – grzyby i śluzowce, 188 739 – porosty, 9 875 – glony (tab. 2). Glony są najslabiej re-

of the vascular plants, 446.320 specimens of the bryophytes, 205.703 specimens of the fungi and myxomycetes, 188.739 specimens of the lichens, and 9.875 specimens of the algae (Tab. 2). It should be noted that the collections of the algae to some extent are enriched by the collection of the algal illustrations. The algological Iconotheca in the Institute of Botany of the Polish Academy of Sciences, Kraków, includes ca. 280.000 illustrations and is one of the largest collection of this type in Europe. Distribution of collections of the particular groups is given in Figs 5–8. Most of Polish herbaria store local material from various parts of the country. Only a few herbaria including KRA, KRAM, KOR, LBL, POZ, POZG, WA, WRSL are worldwide. Type specimens are rather poorly represented in the Polish herbaria. and are present mostly in the larger ones. For example, KRA and KRAM keep over 1.000 types, LBL holds several hundreds of types (mostly lichens) and POZG has many types of African phanerogams.

The herbaria listed below are arranged alphabetically by the city. Acronyms used in Holmgren *et al.* (1981) for twelve herbaria are adopted. For the others, acronyms suggested by keepers of the herbaria have been introduced. The general scheme of characterization of the collections follows the pattern given in Holmgren *et al.* (1981), but other similar directories have been also consulted. Private herbaria have their acronyms of a diffe-

rezentowane w naszych zbiorach. W grupie tej jednak zielnik może być w pewnym stopniu zastąpiony ikonoteką. Taka centralna ikonoteka gromadzona jest w Instytucie Botaniki PAN; liczy ona około 280.000 „okazów”, (fotografii i rycin) i należy do najbogatszych w Europie. Wielkość zbiorów reprezentujących poszczególne grupy systematyczne w różnych ośrodkach ukazano na rycinach 5–8.

Większość polskich kolekcji ma charakter lokalny lub regionalny. Bogatsze materiały zielnikowe spoza Polski, a więc z innych części Europy czy z innych kontynentów znajdują się w kilku zaledwie zielnikach (KRA, KRAM, KOR, LBL, POZ, POZG, WA, WRSL). Najbogatsze w typy są zielniki krakowskie (KRA i KRAM), gdzie znajduje się ponad 1 000 typów nomenklatorycznych (głównie roślin naczyniowych i mszaków) oraz zielnik lubelski (LBL), gdzie przechowywanych jest kilkaset typów (głównie porosty i mszaki), a także kolekcja afrykańska w POZG.

Zielniki prezentowane poniżej uporządkowane są alfabetycznie według miast. Akronimy dla 12 głównych zielników przyjęto za Holmgren i in. (1981), dla pozostałych przyjęto akronimy zaproponowane przez kuratorów poszczególnych zbiorów. Zielniki prywatne mają akronimy odmiennego typu: skrót *hb.* plus trzy początkowe litery nazwiska. Prezentowana charakterystyka zielników oparta jest na schemacie przyjętym za „Index Herbariorum” (Holmgren

rent type: abbreviation *hb.* plus three beginning letters of the owner's family name.

Abbreviations used in the text:

BOT GARDEN	botanical garden
CUR	curator
CUR PROCED	curatorial procedure
GEOGR AREA	geographical area
P & S WORKS	periodical and serial works

Acknowledgments. I am greatly indebted to Professor Kazimierz Browicz, Directors of institutions consulted and Keepers of the herbaria for information on collections (see Table 1). I am also very grateful to Prof. dr. Jan Kornaś for critical comments on the manuscript, and to Lucyna Musiał M. Sc. for technical assistance.

i in. 1981) oraz „Compendium of Bryology” (Vitt *et al.* 1985).

Skróty użyte w tekście:

BOT GARDEN	ogród botaniczny
CUR	kurator
CUR PROCED	sposób przechowywania zbiorów
GEOGR AREA	obszar geograficzny
P & S WORKS	periodyki i wydawnictwa seryjne

Podziękowania. Autor dziękuje serdecznie Profesorowi Kazimierzowi Browiczowi oraz Dyrektorom i Kierownikom wszystkich instytucji posiadających zbiory zielnikowe a także ich Kustoszązom za przesłane informacje (patrz Tab. 2.). Pragnie również wyrazić podziękowanie Prof. dr J. Kornasiowi i Recenzentom za krytyczne uwagi i sugestie, a także koleżance mgr Lucynie Musiał za pomoc w przygotowaniu tekstu do druku.

REFERENCES • LITERATURA

- HOLMGREN K. P., KEUKEN W., SCHOFIELD E. K. 1981. Index Herbariorum. Part I. The Herbaria of the World. *Regnum Vegetabile* 106: 1-452. Utrecht.
- VITT D. H., GRADSTEIN S. R., IWATSUKI Z. 1985. Compendium of Bryology. A World Listing of Herbaria, Collectors, Bryologists, and Current Research. *Bryophytorum Bibliotheca* 30: I-VII + 1-355. J. Cramer, Braunschweig.

Table 1. List of persons who answered the questionnaires.
Tabela 1. Lista osób, które udzieliły informacji o zbiorach.

Acronym	Town	AUT*)	PASc.**)	Names of persons
BDPA	Bolestraszyce	x		J. Piórecki
BIL	Białowieża	x	x	A. W. Sokółowski
BSG	Białowieża	x		J. B. Faliński
BYDG	Bydgoszcz	x		E. Śpiewakowski
CHRZ	Chrzanów	x		I. Mazaraki
GDMA	Gdańsk	x	x	M. Buliński, H. Tokarz
HMIPC	Kraków	x		S. Domański
IUNG	Puławy	x		Z. Gonet
KINM	Kielce	x		E. Fijałkowski
KOR	Kórnik	x	x	K. Browicz
KRA	Kraków	x	x	Z. Dzwonko, J. Kornaś
KRAM	Kraków	x	x	A. Jasiewicz, H. Komorowska T. Mrozińska, J. Siemińska, L. Stuchlik, R. Ochyra, W. Wojewoda, E. Zastawniak
KRAP	Kraków		x	J. Kiszka
KRFB	Kraków	x		E. Pancer-Kotejowa
KTC	Kielce	x	x	S. Cieśliński
KTU	Katowice	x	x	K. Rostański
LBL	Lublin	x	x	D. Fijałkowski, K. Karczmarz
LBLM	Lublin	x		B. Sałata
LOD	Łódź	x	x	L. Fagasiewicz, R. Olaczek
MGS	Bytom	x	x	E. Hok, J. Kowalewski
OLS	Olsztyn	x	x	B. Polakowski
OLSZ	Olsztyn	x		L. Olesiński
OLTC	Olsztyn	x	x	P. Stypiński
OMWM	Olsztyn	x		W. Radziwinowicz
OPN	Ojców	x		J. Partyka

OPOL	Opole		x	S. Michalak
PBMA	Poznań		x	L. Skrzypczak
POZ	Poznań	x	x	K. Latowski
POZG	Poznań	x	x	S. Lisowski
POZM	Poznań	x		M. Lisiewska
POZNB	Poznań	x		S. Król
POZNF	Poznań		x	W. Danielewicz
POZW	Poznań	x		J. Szweykowski
ROGA	Rogów	x		J. Tumiłowicz
RZS	Rzeszów	x		Z. Wnuk
SKPN	Bieliny	x		R. Kapuściński
SLTC	Słupsk	x	x	J. Misiewicz
SOSN	Sosnowiec	x		K. Jędrzejko
SMOK	Siedlce	x		Z. Więckowska
SZCZ	Szczecin		x	M. Jasnowski
SZPA	Szczecin			J. Błaszczkowski, T. Madej
SZUB	Szczecin	x		T. Głazek
TRN	Toruń	x	x	W. Gugnacka-Fiedor
UGDA	Gdańsk	x	x	W. Fałtynowicz, H. Piotrowska
WA	Warszawa	x	x	M. Kopij, A. Skirgielło
WALM	Wałbrzych	x		M. Pakiet
WAME	Warszawa		x	A. Hummel
WAUF	Warszawa	x		R. Dzieciolowski
WRAB	Wrocław	x	x	J. Fabiszewski
WRAF	Wrocław	x		W. Truszkowska
WRSL	Wrocław	x	x	W. Stojanowska
WSRP	Siedlce	x		E. Œwikliński
ZAMU	Zakopane	x		Z. Mirek
ZTS	Zakopane	x		H. Piękoś-Mirkowa

*) AUT - Data collected by the author

***) PAsC - Data from the Committee of Botany, Polish Academy of Sciences

Table 2. Number of specimens accumulated in Polish herbaria with subdivision into systematic groups.

Tabela 2. Liczba okazów zgromadzonych w polskich zielnikach z podziałem na grupy taksonomiczne.

Herbarium	Number of specimens						
	All groups jointly	Vascular plants	Bryophytes	Fungi and myxomycetes	Lichens	Algae	Others
*BDPA	7.386	6.758	-	-	628	-	-
*BIL	76.230	68.000	7.980	-	250	-	-
*BSG	10.800	6.600	1.200	-	3.000	-	-
*BYDG	6.000	6.000	-	-	-	-	-
*CHRZ	11.103	9.620	126	1.129	228	-	-
*GDMA	31.000	30.000	1.000	-	-	-	-
*HMIPC	15.541	-	-	15.541	-	-	-
*IUNG	6.000	-	-	-	-	-	-
*KINM	2.089	1.595	155	-	339	-	-
KOR	52.000	52.000	-	-	-	-	-
KRA	238.600	190.000	13.600	20.000	15.000	-	-
KRAM	511.200	370.000	115.000	26.000	38.000	2.200	-
*KRAP	37.000	22.000	-	-	15.000	-	-
*KRFB	1.500	1.500	-	-	-	-	-
*KTC	14.500	5.000	500	-	9.000	-	-
KTU	35.160	35.000	-	160	-	-	-
LBL	325.700	162.500	112.000	-	50.000	1.200	-
*LBLM	25.000	-	-	25.000	-	-	-
LOD	334.000	300.000	7.000	17.000	10.000	-	-
*MGS	23.597	12.300	9.730	421	196	-	950
*OLS	11.000	11.000	-	-	-	-	-
*OLSZ	10.300	7.600	2.700	-	-	-	-
*OLTC	10.200	10.000	200	-	-	-	-
*OMWM	1.923	1.923	-	-	-	-	-
*OPN	1.000	1.000	-	-	-	-	-
*OPOL	5.000	5.000	-	-	-	-	-
*PBMA	40.000	40.000	-	-	-	-	-

POZ	175.000	150.000	-	-	25.000	-	-
POZG	220.000	140.000	80.000	-	-	-	-
*POZM	9.300	-	-	9.300	-	-	-
*POZNB	4.850	4.000	500	100	100	150	-
*POZNF	7.000	4.000	-	-	3.000	-	-
*POZW	30.000	-	30.000	-	-	-	-
*ROGA	500	500	-	-	-	-	-
*RZS	2.000	2.000	-	-	-	-	-
*SKPN	1.219	972	-	-	247	-	-
*SLTC	33.000	30.000	-	-	3.000	-	-
*SOSN	24.000	4.000	20.000	-	-	-	-
*SMOK	2.000	2.000	-	-	-	-	-
*SZCZ	11.700	3.500	7.000	1.000	-	200	-
SZPA	1.110	-	-	1.110	-	-	-
SZUB	5.000	5.000	-	-	-	-	-
TRN	196.500	190.000	3.500	3.000	-	-	-
UGDA	32.000	28.000	1.000	-	3.000	-	-
WA	300.700	205.000	50.000	28.700	11.000	6.000	-
*WALM	6.000	-	-	-	-	-	6.000
*WAME	6.792	-	-	-	-	-	6.792
*WAUF	5.000	-	-	5.000	-	-	-
*WRAB	12.100	10.000	1.000	-	1.000	100	-
*WRAF	2.000	-	-	2.000	-	-	-
WRSL	400.000	350.000	-	50.000	-	-	-
WSRP	21.600	21.000	-	-	600	-	-
*ZAMU	7.367	5.800	679	112	151	25	600
*ZTS	11.080	8.500	1.450	130	-	-	1.000
	3.411.647	2.525.668	446.320	205.703	188.739	9.875	15.342

Herbaria not listed in Holmgren *et al.* (1981) are marked with an asterisk



Fig. 1. Localization of Polish herbaria.

Ryc. 1. Lokalizacja polskich zielników.

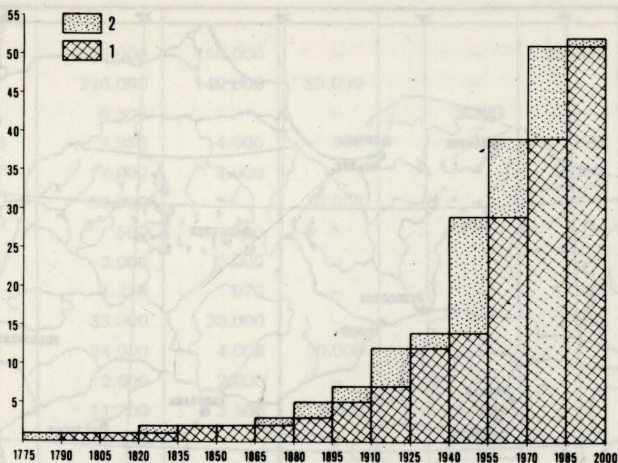


Fig. 2. Historical development of Polish herbaria. Vertically – number of herbaria; horizontally – years. 1 (hatched) – herbaria existing in former period; 2 (dotted) – herbaria established in the given period.

Ryc. 2. Historyczny rozwój polskich zielników. Oś rzędnych – liczba zielników; oś odciętych – lata. 1 (pola zakreskowane) – zielniki istniejące w poprzednim okresie; 2 (pola kropkowane) – zielniki powstałe w danym okresie.

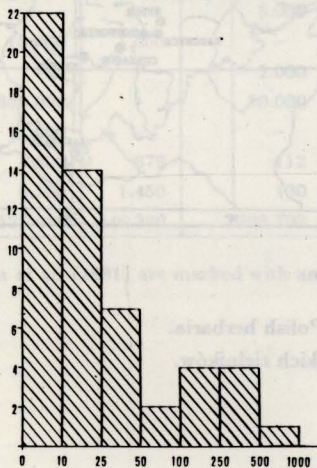


Fig. 3. Dimensional differentiation of Polish herbaria. Vertically: number of herbaria; horizontally: dimensional classes (in thousands of sheet numbers).

Ryc. 3. Zróźnicowanie wielkości polskich zielników. Oś rzędnych: liczba zielników; oś odciętych: klasy wielkości (w tysiącach arkuszy).

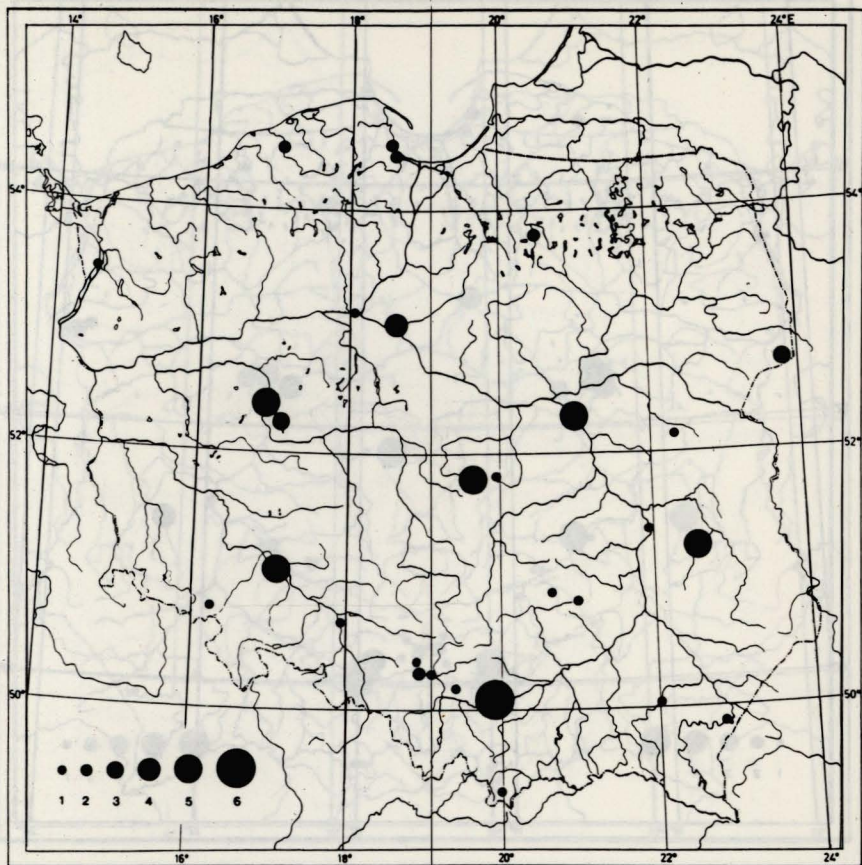


Fig. 4. Total number of specimens in herbaria in particular towns. 1: <25.000; 2: 25.001–50.000; 3: 50.001–100.000; 4: 100.001–250.000; 5: 250.001–500.000; 6: 500.001–1.000.000.

Ryc. 4. Sumaryczna liczba okazów w zielnikach poszczególnych miast. 1: <25.000; 2: 25.001–50.000; 3: 50.001–100.000; 4: 100.001–250.000; 5: 250.001–500.000; 6: 500.001–1.000.000.

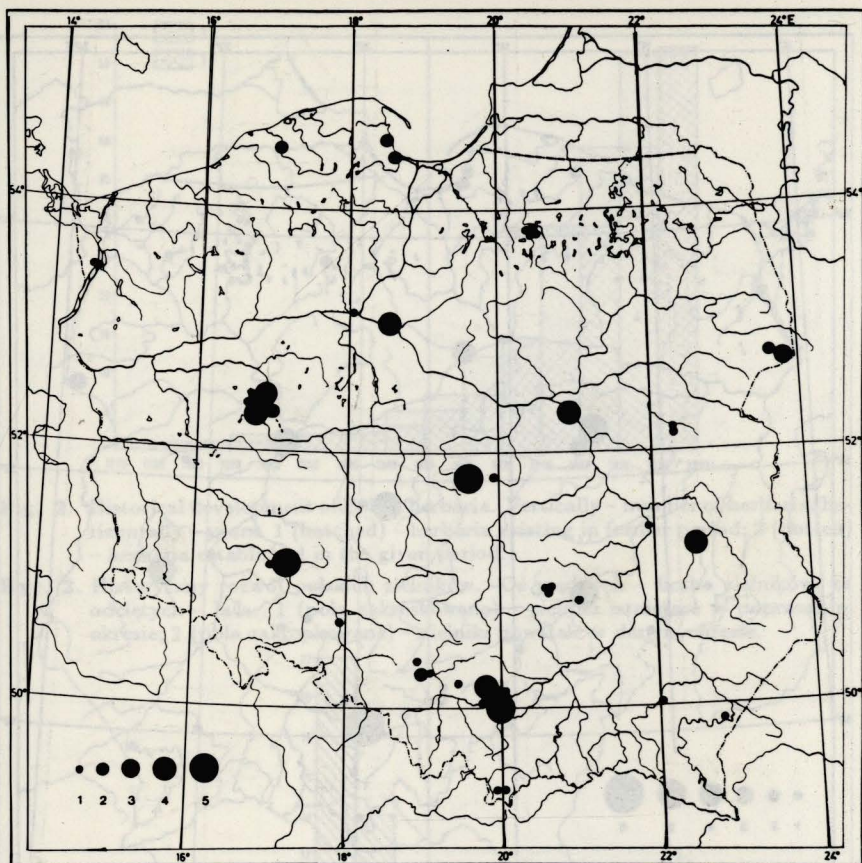


Fig. 5. Collections of vascular plants in Polish herbaria. 1: <25.000; 2: 25.001-50.000; 3: 50.001- 100.000; 4: 100.001-250.000; 5: 250.001-500.000.

Ryc. 5. Zbiory roślin naczyniowych w zielnikach polskich. 1: <25.000; 2: 25.001-50.000; 3: 50.001- 100.000; 4: 100.001-250.000; 5: 250.001-500.000.

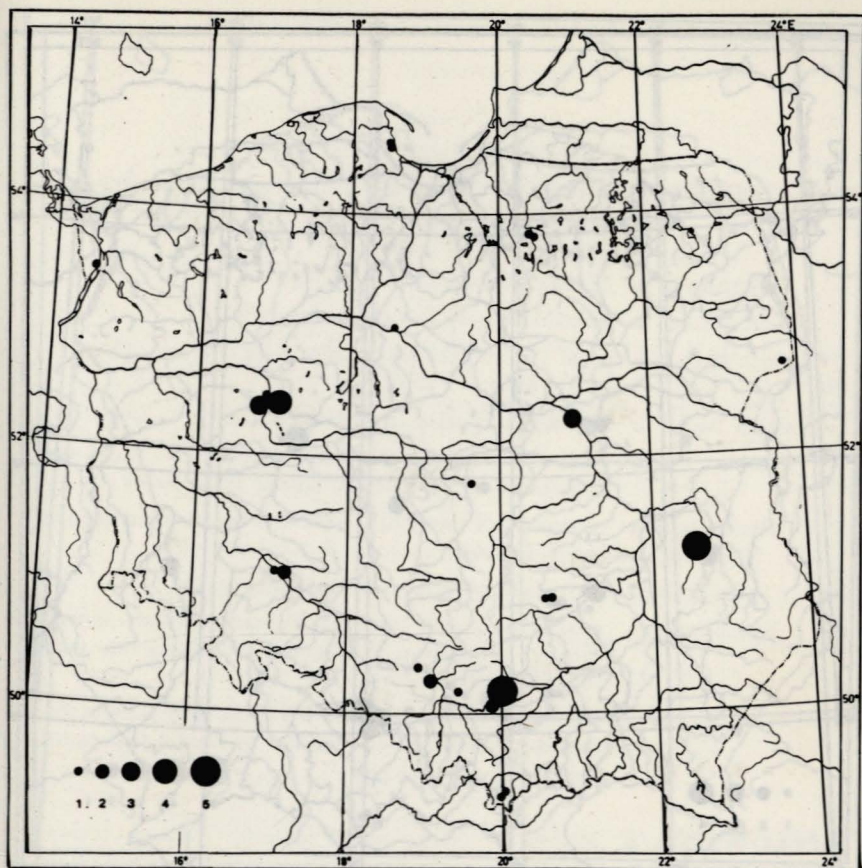


Fig. 6. Collections of Bryophytes (mosses and liverworts) in Polish herbaria. 1: <10.000; 2: 10.001-25.000; 3: 25.001- 50.000; 4: 50.001-100.000; 5: 100.001-150.000.

Ryc. 6. Zbiory mszaków (mchy i wątrobowce) w zielnikach polskich. 1: <10.000; 2: 10.001-25.000; 3: 25.001- 50.000; 4: 50.001-100.000; 5: 100.001-150.000.

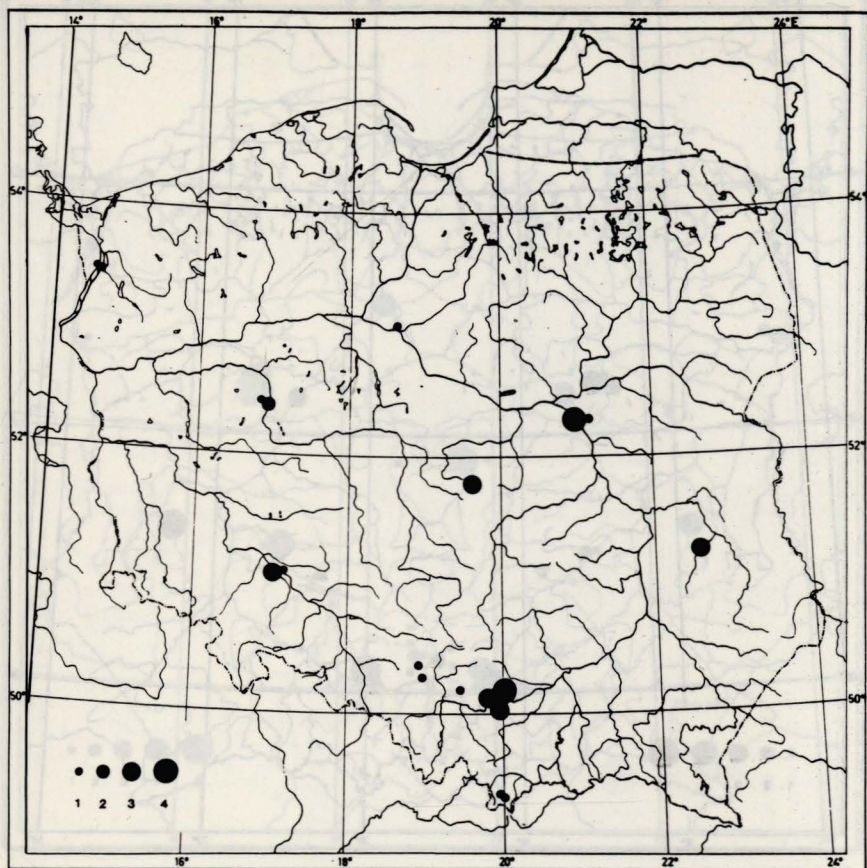


Fig. 7. Collections of fungi and myxomycetes in Polish herbaria. 1: <5.000; 2: 5.001–10.000; 3: 10.001–25.000; 4: 25.001–50.000.

Ryc. 7. Zbiory grzybów i śluzowców w zielnikach polskich. 1: <5.000; 2: 5.001–10.000; 3: 10.001–25.000; 4: 25.001–50.000.

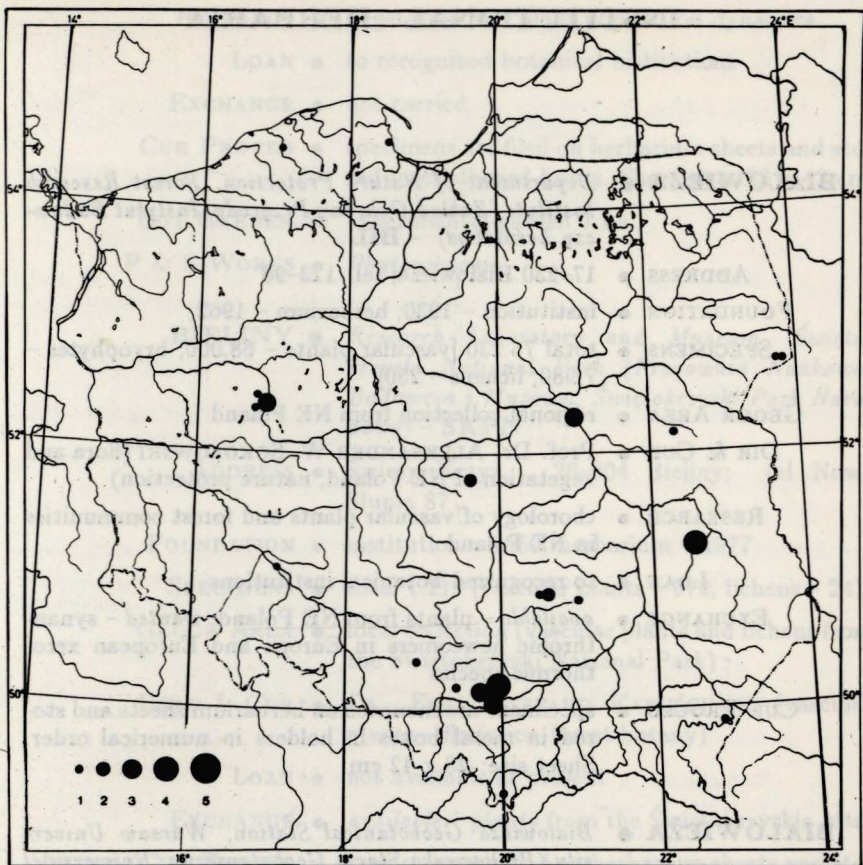


Fig. 8. Collections of lichens in Polish herbaria. 1: <5.000; 2: 5.001-10.000; 3: 10.001- 25.000; 4: 25.001-50.000; 5: 50.001-100.000.

Ryc. 8. Zbiory porostów w zielnikach polskich. 1: <5.000; 2: 5.001-10.000; 3: 10.001-25.000; 4: 25.001-50.000; 5: 50.001-100.000.

INSTITUTIONAL HERBARIA

- BIAŁOWIEŻA** ● *Department of Nature Protection, Forest Research Institute (Zakład Ochrony Przyrody, Instytut Badawczy Leśnictwa) - BIL*
- ADDRESS ● 17-230 Białowieża; tel. 123-96
- FOUNDATION ● institution - 1930; herbarium - 1962
- SPECIMENS ● total 76.230 [vascular plants - 68.000; bryophytes - 7.980; lichens - 250]
- GEOGR AREA ● regional collection from NE Poland
- DIR & CUR ● Prof. Dr. ALEKSANDER W. SOKOŁOWSKI (flora and vegetation of NE Poland, nature protection)
- RESEARCH ● chorology of vascular plants and forest communities in NE Poland
- LOAN ● to recognized botanical institutions
- EXCHANGE ● *available* - plants from NE Poland; *wanted* - synanthropic newcomers in Europe and European xerothermic species
- CUR PROCED ● specimens are mounted on herbarium sheets and stored in metal boxes in holders in numerical order. Sheet size: 28 x 42 cm
-
- BIAŁOWIEŻA** ● *Białowieża Geobotanical Station, Warsaw University (Białowieska Stacja Geobotaniczna, Uniwersytet Warszawski) - BSG*
- ADDRESS ● 17-230 Białowieża; tel. 125-48; 124-79
- FOUNDATION ● institution - 1952; herbarium - 1959
- SPECIMENS ● total 10.800 [vascular plants - 6.600; bryophytes - 1.200; lichens - 3.000]
- GEOGR AREA ● local collection from Białowieża Forest and some forest and non-forest complexes in NE Poland
- DIR & CUR ● Prof. Dr. JANUSZ B. FALIŃSKI (ecology, geobotany, phytosociological cartography, synanthropic flora and vegetation, nature protection)

- RESEARCH ● vegetation and plant population dynamics
- LOAN ● to recognized botanical institutions
- EXCHANGE ● not carried
- CUR PROCED ● specimens are filed on herbarium sheets and stored in cardboard boxes. Sheet size: 28 x 42 cm
- BOT GARDEN ● experimental garden 1 ha
- P & S WORKS ● *Phytocoenosis*

BIELINY ● *Research Laboratory and Museum, Świętokrzyski National Park (Pracownia Naukowo-Badawcza i Muzeum, Świętokrzyski Park Narodowy) - SKPN*

ADDRESS ● Święty Krzyż, 26-004 Bieliny; tel. Nowa Słupia 87

FOUNDATION ● institution - 1950; herbarium - 1977

SPECIMENS ● total 1.219 [vascular plants - 972; lichens - 247]

GEOGR AREA ● local collection (vascular plants and lichens from the Świętokrzyski National Park)

HEAD & CUR ● Dr. Eng. RYSZARD KAPUŚCIŃSKI (vascular plants - floristics, forest botany)

LOAN ● not available at present

EXCHANGE ● available - plants from the Świętokrzyskie Mts

CUR PROCED ● specimens are filed on herbarium sheets and stored in cardboard boxes. Sheet size: 28 x 43.5 cm

BOLESTRASZYCE ● *Department of Physiography and Arboretum in Bolestraszyce, Society of the Friends of Sciences in Przemyśl (Zakład Fizjografii i Arboretum w Bolestraszytach, Towarzystwo Przyjaciół Nauk w Przemyślu) - BDPA*

ADDRESS ● Bolestraszyce 130, 37-722 Wyszatyce; tel. 179-25

FOUNDATION ● institution - 1976; herbarium - 1984

SPECIMENS ● total 7.386 [vascular plants - 6.758; lichens - 628]

GEOGR AREA ● vascular plants and lichens from SE Poland; *Trapa* from Poland

DIR & CUR ● Doc. Dr. JERZY PIÓRECKI (floristics, vascular plants and lichens, ecology of *Trapa*)

STAFF ● M. Sc. JÓZEF HORDOWIAK (floristics, lichens)

RESEARCH ● aquatic macrophytes, lichens of SE Poland; rare and endangered vascular plant species in SE Poland; ecology of *Trapa*

LOAN ● not available at present

EXCHANGE ● *available* and *wanted* - rare vascular plants from SE Poland and lichens of the East Carpathians

BOT GARDEN ● Arboretum 9 ha

BYDGOSZCZ ● *Department of Botany and Ecology, Agricultural Faculty, Technical-Agricultural Academy (Katedra Botaniki i Ekologii, Wydział Rolniczy, Akademia Techniczno-Rolnicza) - BYDG*

ADDRESS ● ul. Bernardyńska 6/8, 85-029 Bydgoszcz;
tel. 39-10-03 ext. 225, 238, 242

FOUNDATION ● institution - 1969; herbarium - 1983

SPECIMENS ● 6.000 [vascular plants only]

GEOGR AREA ● regional collection

DIRECTOR ● Prof. Dr. EUGENIUSZ R. ŚPIEWAKOWSKI (hydrobotany)

CURATOR ● M. Sc. BEATA DĄBROWSKA (agroecology)

STAFF ● M. Sc. EWA KRASICKA (agrophytocoenology)

M. Sc. MACIEJ KORCZYŃSKI (synanthropic plant associations, urban ecology)

M. Sc. BOGNA PACZUSKA (hydrobiology)

Dr JÓZEF PIASECKI (agroecology)

M. Sc. ANNA SPANIDIS (hydrobiology)

Dr MARIA WIELICKA (agroecology)

RESEARCH ● flora and vegetation of the Bydgoszcz Province

LOAN ● not available at present

- EXCHANGE ● *available* – plants of the Bydgoszcz Province; *wanted* – vascular plants of Central European mountains and highlands
- P & S WORKS ● *Zeszyty Naukowe Akademii Techniczno-Rolniczej.*
- BYTOM** ● *Upper Silesian Museum (Muzeum Górnośląskie) – MGS*
- ADDRESS ● Plac Thaelmanna 2, 41-902 Bytom; tel. 81-82-91
- FOUNDATION ● institution – 1927; herbarium – 1927 (by A. KOZŁOWSKA)
- SPECIMENS ● total 23.597 [vascular plants – 12.300; bryophytes – 9.730; fungi and myxomycetes – 421; E. DRESCHER's zoocidia and theratological collection – 950; lichens – 196]
- GEOGR AREA ● local flora of the Upper Silesia and neighbouring territories (chiefly the Silesian Beskid and the Cieszyn Foothills)
- IMPORT COLL ● E. DRESCHER (zoocidia and theratological collection)
- DIRECTOR ● M. Sc. JÓZEF KOWALEWSKI
- CURATOR ● M. Sc. HENRYK DUTKA (zoology)
- LOAN ● limited
- EXCHANGE ● not carried
- P & S WORKS ● *Rocznik Muzeum Górnośląskiego w Bytomiu, Seria Przyroda; Komunikaty Muzeum Górnośląskiego w Bytomiu (Communications of the Upper Silesian Museum in Bytom).*
- LITERATURE ● SENDEK A. 1977. Zielnik Muzeum Górnośląskiego w Bytomiu. *Wiadomości Botaniczne* 21(1): 61-64
 SENDEK A. 1980. Katalog roślin naczyniowych zielnika Muzeum Górnośląskiego. *Rocznik Muzeum Górnośląskiego w Bytomiu, Seria Przyroda* 9: 5-52.
 WERNER A. 1915. Das Herbarium Richter in Oberschlesischen Muzeum zu Gleiwitz. *Oberschlesien* 14: 208-216
- CHRZANÓW** ● *Museum in Chrzanów (Muzeum w Chrzanowie) – CHRZ*

- ADDRESS ● ul. A. Mickiewicza 13, 32-500 Chrzanów; tel. 51-73
- FOUNDATION ● institution - 1950; herbarium - 1936
- SPECIMENS ● total 11.103 [vascular plants - 9.620; bryophytes - 126; fungi - 1.129; lichens - 228]
- GEOGR AREA ● local collections from the Chrzanów District
- DIRECTOR ● M. Sc. JERZY MOTYKA (history)
- CURATOR ● M. Sc. IRENA MAZARAKI (floristics)
- STAFF ● M. Sc. PIOTR GRZEGORZEK (floristics)
- RESEARCH ● local flora, chiefly vascular plants and macrofungi
- LOAN ● not available at present
- EXCHANGE ● not carried
- REMARKS ● see chapter 'Private herbaria' - P. GRZEGORZEK

GDAŃSK ● *Department of Pharmaceutical Botany, Medical Academy (Zakład Botaniki Farmaceutycznej, Akademia Medyczna) - GDMA*

- ADDRESS ● ul. K. Marksa 107, 80-416 Gdańsk-Wrzeszcz; tel. 41-80-11, ext. 47
- FOUNDATION ● institution - 1946; herbarium - 1950
- SPECIMENS ● about 31.000 [vascular plants - 30.000; bryophytes - 1.000]
- IMPORT COLL ● bryophytes of K. LUBLINER-MIANOWSKA
- GEOGR AREA ● regional collection of vascular plants
- DIRECTOR ● Doc. Dr. HELENA TOKARZ (geobotany)
- CURATOR ● Dr MICHAŁ BULIŃSKI (geobotany, floristics)
- STAFF ● Dr. KRYSZYNA SZMEJA (vascular plant flora of N Poland - vicinity of Elbląg)
M. Sc. TADEUSZ JELINOWSKI (vascular plant flora of the Gdańsk region)
- RESEARCH ● flora and vegetation of N Poland, chiefly of the Gdańsk region
- LOAN ● to local institutions only
- EXCHANGE ● *available* - vascular plants of N Poland; *wanted* - medicinal plants from any regions of the world

- CUR PROCED** ● specimens stored on herbarium sheets in cardboard boxes in holders or in cabinets in taxonomical order. Sheet size: 32 x 44 cm
- REMARKS** ● see also chapter 'Private Herbaria' - T. SULMA
- GDYNIA** ● *Department of Plant Ecology and Nature Protection Gdańsk University (Katedra Ekologii Roślin i Ochrony Przyrody, Uniwersytet Gdański) - UGDA, UGDA-B, UGDA-L*
- ADDRESS** ● ul. Czołgistów 46, 81-378 Gdynia; tel. 21-70-28 or 20-34-58, ext. 18
- FOUNDATION** ● institution - 1971; herbarium - 1971
- SPECIMENS** ● total 32.000 [vascular plants - (UGDA) - 28.000; bryophytes (UGDA-B) - 1.000; lichens (UGDA-L) - 3.000]
- GEOGR AREA** ● regional collection (Gdańsk region)
- HEAD & CUR** ● Prof. Dr. HANNA PIOTROWSKA (plant ecology)
- STAFF** ● Dr. JACEK HERBICH (plant ecology, floristics)
 Dr. MARIA HERBICHOVA (plant ecology, floristics)
 Dr. WIESŁAW FAŁTYNOWICZ (lichenology - ecology, distribution and protection of lichens)
 Dr. MAŁGORZATA LATAŁA (palynology)
 Dr. RYSZARD MARKOWSKI (plant ecology, floristics)
 M. Sc. JOANNA PICIŃSKA (phycology)
 M. Sc. BARBARA STACHOWIAK (palynology)
 Dr. JADWIGA STASIAK (floristics, taxonomy - *Juncaceae*, *Linaria odora*)
 M. Sc. DARIUSZ SZLACHETKO (floristics, *Orchidaceae* - taxonomy, evolution, pollination biology and distribution)
 M. Sc. JÓZEF SZMEJA (hydroecology)
- RESEARCH** ● flora and vegetation of N Poland (chiefly of the Gdańsk region)
- LOAN** ● to recognized botanical institutions
- EXCHANGE** ● not carried
- P & S WORKS** ● *Zeszyty Naukowe Wydziału Biologii i Nauk o Ziemi Uniwersytetu Gdańskiego, Seria Biologia*; from 1985 changed into *Zeszyty Naukowe Wydziału Biologii, Geografii i Oceanologii Uniwersytetu Gdańskiego, Se-*

- CUR PROCED** ● specimens of vascular plants filed on herbarium sheets in boxes in holders in taxonomical order. Sheet size: 27 x 42 cm. Bryophytes and lichens in envelopes in cardboard boxes in holders
- KATOWICE** ● *Department of Plant Systematics, Faculty of Biology and Environmental Protection, Silesian University (Katedra Systematyki Roślin, Wydział Biologii i Ochrony Środowiska, Uniwersytet Śląski) - KTU*
- ADDRESS** ● ul. Jagiellońska 28, 40-032 Katowice; tel. 51-88-11, ext. 16 or 57
- FOUNDATION** ● institution - 1970; herbarium - 1972
- SPECIMENS** ● total 35.160 [vascular plants -35.000; fungi and myxomycetes - 160]
- GEOGR AREA** ● Upper Silesian flora, vascular plants of Cuba
- IMPORT COLL** ● K. ROSTAŃSKI - 1.800 sheets of vascular plants from Cuba, about 5.000 sheets of *Oenothera*
- TYPES** ● many types of *Oenothera* species
- DIRECTOR** ● Prof. Dr. K. ROSTAŃSKI (taxonomy - *Oenothera* in Europe, *Ludwigia* in Cuba and *Valeriana* in Poland)
- CURATOR** ● M. Sc. ELŻBIETA KRAWCZYK (banking of vascular plants localities from the Upper Silesia)
- STAFF** ● M. Sc. LESZEK BERNACKI (*Dactylorhiza* in Poland)
M. Sc. ADAM ROSTAŃSKI (floristics, *Oenothera* in Silesia, *Poaceae*)
Dr. SŁAWOMIR SOKÓŁ (*Onagraceae*, hybridization in *Oenothera*)
M. Sc. BARBARA TOKARSKA-GUZIŁ (floristics, *Oenothera* in Silesia)
- RESEARCH** ● flora of the Upper Silesia; influence of industrial air pollution on forests
- LOAN** ● to recognized botanical institution
- EXCHANGE** ● *available* - vascular plants from Poland, chiefly from the Upper Silesia; *wanted* - vascular plants from different regions of Europe
- P & S WORKS** ● *Zeszyty Naukowe Uniwersytetu Śląskiego w Katowici*

cach. Acta Biologica (from Vol. 18(1985) changed into *Acta Biologica Silesiana*), Katowice

CUR PROCED ● specimens stored on herbarium sheets in boxes in wooden or metal holders in taxonomical order for genera and alphabetical for species. Sheet size: 30 x 43 cm

KIELCE ● *National Museum (Muzeum Narodowe) - KINM*

ADDRESS ● Pl. Zamkowy 1, 25-010 Kielce; tel. 467-64

FOUNDATION ● institution - 1908; herbarium - 1908

SPECIMENS ● total 2.089 [vascular plants - 1.595; bryophytes - 155; lichens - 339]

GEOGR AREA ● local collection

DIRECTOR ● M. Sc. ALOJZY OBORNY

CURATOR ● M. Sc. EUGENIUSZ FIJAŁKOWSKI (geology)

RESEARCH ● flora of the Kielce region

LOAN ● not available at present

EXCHANGE ● not carried

P & S WORKS ● *Rocznik Muzeum Narodowego, Zeszyty Przyrodnicze*

KIELCE ● *Department of Botany, Institute of Biology, Teachers College (Zakład Botaniki, Instytut Biologii, Wyższa Szkoła Pedagogiczna im. J. Kochanowskiego) - KTC*

ADDRESS ● ul. Rew. Październikowej 33, 25-518 Kielce, tel. 490-44, 490-45

FOUNDATION ● institution - 1973; herbarium - 1975

SPECIMENS ● total 14.500 [vascular plants - 5.000; bryophytes - 500; lichens - 9.000]

GEOGR AREA ● local collection, chiefly from the Kielce region

HEAD ● Prof. Dr. STANISŁAW CIEŚLIŃSKI (lichenology)

CURATOR ● Dr. EDWARD BRÓZ (vascular plant floristics, geobotany)

STAFF ● M. Sc. BOŻENA ŁUSZCZYŃSKA (vascular flora in the vicinity of Pińczów)

- M. Sc. JANUSZ ŁUSZCZYŃSKI (macrofungi of the Kielce region)
 Dr. BOŻENA MACIEJCZYK (floristics, synanthropic vegetation)
 Dr. MARIA MAZUR (ecology of vascular plants)
 M. Sc. ALOJZY PRZEMYSKI (floristics, geobotany)
 Dr. KRZYSZTOF TOBOROWICZ (lichenology - floristics and lichen communities)
 M. Sc. ANNA TRESKA (meadow associations in the region of the Świętokrzyskie Mts)
- RESEARCH ● flora (lichens and vascular plants) and vegetation of the Kielce region
- LOAN ● to recognized botanical institutions
- EXCHANGE ● *available* - vascular plants and lichens from the Kielce region; *wanted* - lichens from Central Europe
- CUR PROCED ● specimens filed on herbarium sheets and stored in boxes in holders in taxonomical order. Sheet size: 30 x 42 cm
- KÓRNIK** ● *Institute of Dendrology, Polish Academy of Sciences (Instytut Dendrologii, Polska Akademia Nauk) - KOR*
- ADDRESS ● ul. Parkowa 5, 62-035 Kórnik; tel. 17-00-33 (Poznań)
- FOUNDATION ● institution - 1925 (since 1952 in Polish Academy of Sciences); herbarium - 1952
- SPECIMENS ● 52.000 [trees and shrubs only]
- GEOGR AREA ● trees and shrubs, especially Poland, E Mediterranean region and SW Asia
- IMPORT COLL ● trees and shrubs from SW Asia and Greece
- DIRECTOR ● Prof. Dr. WŁADYSŁAW BUGAŁA (dendrology)
- CURATOR ● Prof. Dr. KAZIMIERZ BROWICZ (taxonomy and geography of woody plants - *Colutea*, *Periploca*, West Asiatic *Prunoideae* and *Pomoideae*)
- STAFF ● Dr. KRYSZYNA BORATYŃSKA (geography of trees and shrubs)
 Dr. ADAM BORATYŃSKI (variability, geography and ecology of trees and shrubs, *Acer*, *Rosa*)

Dr. JACEK HANTZ (geography of trees and shrubs)
Doc. Dr. JERZY ZIELIŃSKI (systematics and geography
of trees and shrubs, *Rosa* and *Rubus*)

- RESEARCH ● taxonomy and geography of woody plants of Poland,
SW Asia and E Mediterranean region
- LOAN ● to recognized botanical institutions
- EXCHANGE ● *available* – Polish trees and shrubs, cultivated plants;
wanted – W Asiatic and Mediterranean woody plants
- P & S WORKS ● *Arboretum Kórnickie; Atlas of Distribution of Trees
and Shrubs in Poland* (completed); *Chorology of
Trees and Shrubs in South-West Asia and Adjacent
Regions; Nasze drzewa leśne, Monografie popularno-
naukowe*
- CUR PROCED ● specimens mounted on herbarium sheets and sto-
red in cabinets in alphabetical order. Sheet size:
31 x 46 cm
- BOT GARDEN ● Kórnik Arboretum – ca. 55 ha
- LITERATURE ● BUGAŁA W., BOJARCZUK T., DOLATOWSKI J. 1990. *Arbore-
tum Kórnickie. Przewodnik*. 141 pp., Państwowe Wydawnic-
two Naukowe. Warszawa – Poznań.
KORNAŚ J., ZURZYCKI J. 1959. *Botany in Poland*. 35 pp.
Jagiellonian University and the Polish Academy of Sciences
(Cracow Centre). Cracow.
- KRAKÓW** ● *Department of Forest Phytopathology, Agricultural
Academy (Katedra Fitopatologii Leśnej, Akademia
Rolnicza) – HMIPC*
- ADDRESS ● Al. 29 Listopada 26, 31-425 Kraków; tel. 11-91-44,
ext. 292
- FOUNDATION ● institution – 1964; herbarium – 1955
- SPECIMENS ● 15.541 [fungi]
- GEOGR AREA ● regional collection (chiefly *Aphyllphorales* from va-
rious regions of Poland, some specimens from Europe
and North America)
- IMPORT COLL ● *Aphyllphorales* (S. Domański)
- TYPES ● Type specimens of *Dentipratulum bialoviesense* Do-
mański and *Pleurotus vellinianus* Domański

DIR & CUR • Doc. Dr. STEFAN KOWALSKI

STAFF • Prof. Dr. STANISŁAW DOMAŃSKI (phytopathology, mycology, *Basidiomycotina*, *Aphyllophorales*)
Dr. TADEUSZ KOWALSKI (taxonomy and distribution of *Ascomycotina*, *Deuteromycotina*)

RESEARCH • taxonomy, ecology and chorology Central European *Aphyllophorales* and *Deuteromycotina*

LOAN • to recognized botanical institutions

EXCHANGE • available – *Basidiomycotina*, *Aphyllophorales* (pathogenic and saprophytic) and *Ascomycotina*, *Deuteromycotina* (pathogenic and saprophytic) from Poland; wanted – the same taxonomic groups from Europe, N America and the U.S.S.R.

KRAKÓW • *Institute of Botany, Jagiellonian University (Instytut Botaniki, Uniwersytet Jagielloński)* – KRA, KRA-B, KRA-F, KRA-L

ADDRESS • ul. Lubicz 46, 31-512 Kraków; tel. 21-51-44, ext. 52

FOUNDATION • institution – 1912; herbarium – 1780

SPECIMENS • total 238.600 [vascular plants (KRA) – 190.000; bryophytes (KRA-B) – 13.600 on permanent loan in KRAM-B; lichens (KRA-L) – 15.000; fungi and myxomycetes (KRA-F) – 20.000]

GEOGR AREA • world-wide collection, all taxonomical groups

IMPORT COLL • vascular plants – F. BERDAU, A. REHMAN, A. ŚLENDZIŃSKI, M. RACIBORSKI (Java 5.000), K. JELSKI (S America 5.000), A. STARZEŃSKI (E Africa 10.000), J. KORNAŚ and A. MEDWECKA-KORNAŚ (tropical Africa 20.000), B. PAWŁOWSKI (Central European mountains), A. Pacyna (Mongolia)
bryophytes – A. ŻMUDA, B. SZAFRAN (Poland), M. RACIBORSKI (Java), M. OLECH (Antarctica, Spitsbergen), RABENHORST (*Bryotheca Europaea*), BAUER (*Musci Europaei Ersiccati*)
fungi – M. RACIBORSKI (Java), microfungi, type material
lichens – M. OLECH (Antarctica, Spitsbergen)

TYPES • many types of flowering plants, peridophytes and

fungi including M. Raciborski's collection from Malasia

DIRECTOR ● Prof. Dr. JAN KORNAŚ (taxonomy and phytogeography, synanthropic flora and vegetation of Poland, human impact on the plant cover, flora and vegetation of the Polish Carpathians – *Atlas of the distribution of vascular plants in the Carpathians*, taxonomy, ecology and distribution of African pteridophytes)

CURATORS ● vascular plants – Dr. EUGENIUSZ DUBIEL (floristics, vascular plants)
bryophytes and lichens – Doc. Dr. MARIA OLECH (lichens and mosses of Spitsbergen, lichen vegetation of the Tatra Mts, human impact on the flora of lichens in Poland)
fungi – Prof. Dr. BARBARA GUMIŃSKA (macrofungi of Pieniny Mts (Western Carpathians))
myxomycetes – Dr ANNA DROZDOWICZ (myxomycetes of S Poland)

STAFF ● Doc. Dr. ZBIGNIEW DZWONKO (ecology, forest vegetation of the Carpathian Mts, numerical methods in phytosociology)

Dr. KRYSZYNA HARMATA (palaeobotany, palynotaxonomy of *Symphytum*)

Dr. MAŁGORZATA KOTAŃSKA (ecology of vascular plants)

Dr. STEFANIA LOSTER (floristics, vascular plants)

M. Sc. MAŁGORZATA MATYJASZKIEWICZ (*Epipactis* in Poland)

Prof. Dr. ANNA MEDWECKA-KORNAŚ (ecology of vascular plants, phytosociology – chiefly forest vegetation of Europe, nature protection)

M. Sc. MARTA MIERZEŃSKA (liverworts of S Poland)

Doc. Dr. ANNA PACYNA (flora and vegetation of the Khangaj Mts, *Lycopodiaceae s.l.* in Poland)

Dr. ANNA STENGL-REJTHAR (*Amaranthus* in Poland, floristics)

Dr. KRYSZYNA TOWPASZ (ecology of vascular plants, phytosociology, floristics)

Doc. Dr. HELENA TRZCIŃSKA-TACIK (ecology of vascular plants, synanthropic flora of Poland)

Dr. KATARZYNA TURNAU (mycology, air pollution)

Doc. Dr. ADAM ZAJĄC (origin of European archeo-

phytes, vascular plant geography and taxonomy, distribution of vascular plants in Poland, *Cerastium* in Poland)

Dr. MARIA ZAJĄC (chorology, geobotany, distribution of vascular plants in Poland)

Dr. URSZULA ZAJĄC (vascular plant geography and taxonomy, genus *Bromus* in Poland)

Dr. DANUTA ZDEBSKA (Devonian floras; evolutionary differentiation in plants)

RESEARCH ● flora of Poland (all groups); chorology of vascular plants (ATPOL); pteridophytes of Africa; flora and vegetation of Mongolian mountains

LOAN ● to recognized botanical institutions

EXCHANGE ● available – European plants, especially Poland; wanted – plants from the Holarctic and tropical Africa, especially *Pteridophytes*

P & S WORKS ● *Zeszyty Naukowe Uniwersytetu Jagiellońskiego, Prace Botaniczne; Plantae Poloniae Exsiccatae; Pteridophyta Poloniae Exsiccata; Index Seminum*

CUR PROCED ● specimens of vascular plants are mounted on herbarium sheets in wooden boxes in metal holders in taxonomical order; bryophytes and fungi are filed in envelopes on herbarium sheets in wooden boxes in metal holders in alphabetical order; lichens are filed in envelopes in cardboard boxes, in metal cabinets in alphabetical order. Sheet size: 31 x 44 cm (vascular plants, fungi); 31,5 x 48 cm (bryophytes). Envelopes and boxes size respectively: 12 x 16 cm, 16 x 18 x 48 cm (lichens); myxomycetes in paper (carton) little boxes in cardboard boxes of size: 35 x 50 cm.

BOT GARDEN ● Botanical Garden of the Jagiellonian University, ul. Kopernika 27, 31-501 Kraków; tel. 21-02-77

DIRECTOR ● Doc. Dr. KAZIMIERZ SZCZEPANEK (palaeobotany)

STAFF ● Dr. MARIA LANKOSZ-MRÓZ (cytotaxonomy of *Tripleurospermum*)

Dr. ALICJA PIEKIELKO-ZEMANEK (history of botany)

Dr. DANUTA TUMIDAJOWICZ (ecology of vascular plants)

Dr. BOGDAN ZEMANEK (floristics – vascular plants,

vascular flora of the Polish Eastern Carpathians)
[In the Botanical Garden there is the Museum comprising botanical archives and about 5.000 of botanical specimens (dendrological collection, seeds and fruits, paleobotanical collection) including 1.000 specimens collected by M. RACIBORSKI in Java and about 240 specimens collected by K. JELSKI in S America. There are also 52 type specimens of parasitic fungi (M. RACIBORSKI, Java)]

- REMARKS** ● There are preserved also two historical herbaria of the XVIII century. The first is a book of 27 sheets (24,5 x 40 cm) with 172 specimens of plants captioned with latin names. Its supposed author could be a French physician J. A. CAMELIN, professor of medicine at the Cracow Academy, who lectured medicinal botany in 1749–1774. The second herbarium consists of four unified folio volumes (32 x 44,5 cm). The I volume includes 104 sheets, vol. II – 98 sheets, vol. III – 100 sheets, vol. IV – 104 sheets. The herbarium contains 383 species of plant captioned in latin. After the title page the owner of the herbarium was ANDRZEJ BADURSKI (1740–1789), lecturer of medicine at Cracow Academy, but its probably author was PAOLO ANDREA PARENTI (1699–1771) – chemist and surgeon of the hospital Santa Maria della Vita in Bologna. For further information in this respect see: PIEKIELKO A. 1981. *Dwa osiemnastowieczne zielniki ze zbiorów Instytutu Botaniki Uniwersytetu Jagiellońskiego*. Wydawnictwo Instytutu Historii Nauki, Oświaty i Techniki Polskiej Akademii Nauk, Zakład im. Ossolińskich, Wrocław, 194 pp. In the Institute there is also stored private collection of J. KORNAŚ and A. MEDWECKA-KORNAŚ

- LITERATURE** ● KOHLER P. S. 1989. The Javanese *Pteridophyta* collected by Marian Raciborski housed in the herbarium of the Jagiellonian University (KRA). *Zeszyty Naukowe Uniwersytetu Jagiellońskiego* 926, *Prace Botaniczne* 18: 127–133.
KORNAŚ J. 1984. Type material for Marian Raciborski's Names of Malesian Pteridophytes at the Herbarium Universitatis Jagiellonicae Cracoviensis. *Taxon* 33(4): 752–755.
KORNAŚ J., ZURZYCKI J. 1959. Botany in Poland. 35 pp. Jagiellonian University and the Polish Academy of Sciences (Cracow Centre), Cracow

PIEKIELKO-ZEMANEK A. 1985. Zbiory muzealne Ogródu Botanicznego Uniwersytetu Jagiellońskiego w Krakowie. *Wiadomości Botaniczne* 29(1): 59-68.

TACIK T. 1954. Zbiory afrykańskie Adama Starzeńskiego. *Fragmenta Floristica et Geobotanica* 2(1): 182-183.

ZEMANEK A. 1989. Historia botaniki w Uniwersytecie Jagiellońskim (History of Botany at the Jagiellonian University) (1780 - 1917). *Rozprawy habilitacyjne, Uniwersytet Jagielloński* 164: 1-164. Uniwersytet Jagielloński, Kraków.

KRAKÓW ● *W. Szafer Institute of Botany, Polish Academy of Sciences (Instytut Botaniki im. Wł. Szafera, Polska Akademia Nauk); - KRAM, KRAM-A, KRAM-B, KRAM-BP, KRAM-F, KRAM-L, KRAM-P*

ADDRESS ● ul. Lubicz 46, 31-512 Kraków; tel. 21-51-44; fax (012) 21-42-27

FOUNDATION ● institution - 1953; herbarium - about 1867

SPECIMENS ● total 511.200 [vascular plants (KRAM) - 370.000 including herbarium of B. PAWŁOWSKI (KRAM-BP) - ca 30.000; bryophytes (KRAM-B) - 115.000 including 13.600 specimens in permanent deposit from KRA; fungi and myxomycetes (KRAM-F) - 26.000; lichens (KRAM-L) - 38.000; algae (KRAM-A) - 1.400 slides of diatoms and 2.200 dried specimens; paleobotanical collection (KRAM-P) - see remarks

GEOGR AREA ● world-wide collection with emphasis on Holarctic plants and mountain flora of Europe

IMPORT COLL ● KRAM (vascular plants) - E. JANCZEWSKI (*Ribes*, plants of Wolhynia), B. KOTULA (Carpathian Mts, Tirolian Alps - over 25.000), A. JASIEWICZ (Balkan Peninsula), L. STUHLIK (Cuba), B. PAWŁOWSKI (Carpathian Mts, the Alps, Balkan Peninsula, many types), T. WILCZYŃSKI (about 10.000 from Podolia and Wolhynia), A. ŚLEŃZIŃSKI (Pokutia), KRAM-L - U. BIELCZYK (The Polish Carpathians), W. BOBERSKI, J. BYSTREK, K. CZYŻEWSKA, K. GLANC, B. GODZIK (Spitsbergen), K. GRODZIŃSKA (Spitsbergen), J. KISZKA, B. LYNGE, J. MOTYKA, J. NOWAK (Poland), A. REHMAN, T. SULMA, Z. TOBOLEWSKI, M. ZIELIŃSKA. KRAM-B - about

500 types, A. ŻMUDA, M. KUC (Poland, Spitsbergen), B. SZAFRAN, R. OCHYRA (Antarctica, Africa, Europe), F. LILIENFELD, J. KRUPA, A. REHMAN, S. LISOWSKI (Africa, Asia, Europe), T. PÓCS (East Africa). KRAM-F - E. JANCZEWSKI, J. KRUPA, K. ROUPPERT, W. STEC-ROUPPERTOWA, B. NAMYSŁOWSKI, A. WRÓBLEWSKI, W. and J. ZABŁOCKI, W. WOJEWODA (*Heterobasidiomycetes* from Poland, Korean macrofungi), T. MAJEWSKI. KRAM-A - T. MROZIŃSKA (40 types of *Oedogoniales*.) KRAM-P - M. JASIEWICZOWA, W. KOPEROWA, J. OSZAST, L. STUCHLIK, W. SZAFER, A. ŚRODOŃ, M. ŚRODONIOWA, K. WASYLIKOWA, E. ZASTAWNIAK;

TYPES ● about 1.400 [vascular - ca 700; bryophytes - 500; lichens - ca 100; algae -74]

DIRECTOR ● Prof. Dr. LEON STUCHLIK (palynotaxonomy - *Polemoniaceae*, Tertiary floras)

CURATORS ● KRAM (vascular plants) - Prof. Dr. ADAM JASIEWICZ (taxonomy of vascular plants - *Hieracium*, *Euphrasia*, *Melampyrum*, *Scabiosa*, *Rhinanthus*)
KRAM-A - Doc. Dr. TERESA MROZIŃSKA (algology, world monograph of *Oedogoniales*)

KRAM-B - Doc. Dr. RYSZARD OCHYRA (Antarctic bryophytes, European mosses - taxonomy and distribution, *Amblystegiaceae* of the world, moss flora of East Africa)

KRAM-F - Prof. Dr. WŁADYSŁAW WOJEWODA (macrofungi of S Poland, *Heterobasidiomycetes* of Central Europe)

KRAM-L - Doc. Dr. JANUSZ NOWAK (lichens of Poland, *Verrucaria* in Central Europe)

KRAM-P - Doc. Dr. EWA ZASTAWNIAK (Tertiary floras of Antarctica and Central Europe)

STAFF ● M. Sc. HALINA BEDNAREK-OCHYRA (chorology of Polish mosses, botanical illustrations, taxonomy of *Racomitrium*)

Dr. MARIA BIAŁOBRZESKA (taxonomy and variability of vascular plants - *Betula*, *Fagus*)

Dr. URSZULA BIELCZYK (communities of epiphytic lichens in the Polish Carpathians)

M. Sc. ANDRZEJ CHLEBICKI (mycology - *Pyrenomyces* of the Polish national parks; botanical illu-

strations)

Dr. LUDWIK FREY (cytotaxonomy and chorology of grasses in Poland - *Avena*, *Avenula*, *Deschampsia*, *Koeleria*, *Trisetum*)

Doc. Dr. MARIA GOSTYŃSKA-JAKUSZEWSKA (taxonomy of vascular plants - *Crataegus*)

Dr. MAŁGORZATA GUZIKOWA (ecology and distribution of alien *Solidago* and *Reynoutria* species, synanthropic vascular plant flora of the Pieniny Mts)

Dr. ZOFIA HEINRICH - macrofungi (genus *Hypholoma*)

Dr. HALINA KOMOROWSKA (mycology - *Tricholomataceae* of Poland, myxomycetes of S Poland)

Prof. Dr. TOMASZ MAJEWSKI (taxonomy and chorology of parasitic fungi - *Uredinales*, *Ustilaginales*, *Laboulbeniales*)

Prof. Dr. JÓZEF MAŁDAŁSKI - (emeritus) iconography of Polish vascular plants in Silesia)

Dr. ZBIGNIEW MIREK (*Camelina*, *Neslia*, biotaxonomy of *Lamium maculatum* and *L. galeobdolon* complex, *Glyceria* and *Veronica*, synanthropic flora of the Carpathians, steppe flora and vegetation of Poland, history of botany)

Dr. MARTA MIZIANTY (cytotaxonomy of genus *Dactylis* L. in Central Europe)

M. Sc. LUCYNA MUSIAŁ (biotaxonomy and ecology of the *Solidago virgaurea* - *alpestris* complex)

M. Sc. LIDIA NOWAK (*Sesleria* in Europe)

Dr. WIEŚŁAWA PRZYBYŁOWSKA-LANGE (algology - extant and fossil diatoms of Poland)

Doc. Dr. MARIA REYMANÓWNA - Mesozoic macrofossils

Prof. Dr. JADWIGA SIEMIŃSKA (taxonomy and chorology of algae - diatoms, *Rhodophyceae*; bibliography)

Prof. Dr. JERZY STASZKIEWICZ (taxonomy and variability of vascular plants - *Dendranthema zawadzkii*, *Picea*, *Pinus*, *Trapa*)

Dr. JANINA TRUCHANOWICZ (taxonomy and variability of trees - *Betula*, *Fagus*)

Dr. KONRAD WOŁOWSKI (algology, floristics)

Dr. JAN J. WÓJCICKI (taxonomy, variability and hybridization of vascular plants - *Prunus fruticosa*, *Saxifraga moschata* - *exarata* complex, *Trapa*)

Prof. Dr. KAZIMIERZ ZARZYCKI (ecology of vascular plants; rare and threatened species of Polish flora; sex ratio in the *Rumex acetosa* complex)

- RESEARCH ● fossil and contemporary flora of Poland, plants of the Balkan Peninsula, Antarctic and Arctic bryophytes, European mountain flora, ecology of threatened and expanding plant species in Central Europe, Cuban flora
- LOAN ● to recognized botanical institutions
- EXCHANGE ● *available* – plants – (all groups) from Poland; *wanted* – all groups of plants from different regions of the world (especially mountain plants from Europe and Asia)
- P & S WORKS ● *Polish Botanical Studies; Polish Botanical Studies – Guidebook Series; Acta Palaeobotanica; Fragmenta Floristica et Geobotanica; Bibliografie Botaniczne (Botanical Bibliography). Atlas Flory Polskiej i Ziemi Ościennych (Florae Poloniae Iconographia); Flora polska – rośliny naczyniowe (Flora of Poland – vascular plants); Flora Polska – rośliny zarodnikowe (Flora of Poland – cryptogams); Mała Flora Grzybów (Field Flora of Fungi); Flora Śłodkowodna Polski (Freshwater Flora of Poland); Atlas rozmieszczenia roślin zarodnikowych w Polsce (Atlas of the geographical distribution of spore plants in Poland – Lichenes, Hepaticae, Musci); Flora Poloniae Exsiccata (vascular plants); Plantae Vasculares Svalbardenses Exsiccatae; Musci Poloniae Exsiccati; Bryophyta Antarctica Exsiccata; Bryophyta Svalbardensia Exsiccata; Bryophyta Africana Selecta; Phycotheca Polonica; Lichenes Poloniae Meridionalis Exsiccati.*
- CUR PROCED ● specimens of vascular plants are filed on herbarium sheets in metal cabinets in taxonomical order (Durand's system). Sheet size: 31 x 43,5 cm. Bryophytes are filed in envelopes in holders in metal cabinets; fungi – in envelopes, on herbarium sheets and stored in cardboard boxes in holders; lichens in envelopes, in cardboard boxes in metal cabinets
- REMARKS ● the collection of the Paleobotanical Museum KRAM-P (at the Department of Palaeobotany) consists of:

I. extant plants – 13.720 slides of spores and pollen (10.219 species, 3.544 genera, 287 families); 25.000 vials of seeds and fruits (11.830 species, 2.269 genera, 232 families); wood collection (205 species, 114 genera), collection of tissues (vascular plants and mosses) of peat-forming plants (234 slides); leaves collection (several thousand samples).

II. fossil plants – paleo- and mesophytic floras (7 types); Tertiary floras (9292 sites, 1.139 taxa including 66 type specimens); Quaternary floras (319 sites, 1.221 taxa including 6 type specimens). At the Department of Phycology there is the *Iconotheca* of the algae (collection of drawings and photographs of freshwater algae and fossil diatoms published in the world literature) – over 280.000 figures. Library (common property of the Institute of Botany, Jagiellonian University, and Institute of Botany, Polish Academy of Sciences) – about 130.000 volumes. In the Institute there are also stored two private collections: A. JASIEWICZ's and H. & Z. MIREK's – see chapter 'Private Herbaria', and two herbaria of historical value: J.E. GILIBERT's (XVIII century) and S.B. & J. JUNDZILL's (XVIII/XIX century).

LITERATURE ● KORNAŚ J., ZURZYCKI J. 1959. Botany in Poland. 35 pp. Jagiellonian University and the Polish Academy of Sciences (Cracow Centre). Cracow.

LAŃCUCKA-ŚRODONIOWA M. 1985. A Catalogue of the types of fossil species and intraspecific taxa kept in the Museum of the Department of Palaeobotany, Institute of Botany, Polish Academy of Sciences, Kraków, *Acta Palaeobotanica* 25(1/2): 21–32.

KRAKÓW ● *Institute of Biology, Teachers College (Instytut Biologii, Wyższa Szkoła Pedagogiczna)* – KRAP, KRAP-L, KRAP-R

ADDRESS ● ul. Podbrzezie 3, 31-054 Kraków; tel. 22-28-05

FOUNDATION ● institution – 1950; herbarium – 1955/56

SPECIMENS ● total 37.000 [vascular plants (KRAP) – 22.000 including the separate collection of *Rosa* (KRAP-R) – 20.000; lichens (KRAP-L) – 15.000]

GEOGR AREA ● regional collection

- DIRECTOR** ● Doc. Dr. JAN KRUPA (physiology)
- CURATORS** ● KRAP – Dr. STANISŁAW PELC (floristics)
 KRAP-L – Doc. Dr. JÓZEF KISZKA (distribution of lichens in S Poland)
 KRAP-R – Dr. RYSZARD POPEK (distribution and variability of *Rosa* in Central Europe)
- STAFF** ● Dr. BARBARA STUCLIK (floristics, vascular plants phytosociology)
 Dr. RYSZARD KOZIK (lichenology, S Poland)
- LOAN** ● to recognized botanical institutions

KRAKÓW ● *Department of Forest Botany and Nature Protection, Faculty of Forestry, H. Kollątaj Agricultural Academy (Katedra Botaniki Leśnej i Ochrony Przyrody, Wydział Leśny, Akademia Rolnicza im. H.Kollątaja) – KRFB*

ADDRESS ● Al. 29 Listopada 46, 31-425 Kraków; tel. 11-91-44, ext. 296

FOUNDATION ● institution – 1984; herbarium – 1985

SPECIMENS ● 1.500 [vascular plants]

GEOGR AREA ● regional collection – forest flora of S Poland

HEAD & CUR ● Doc. Dr. ELŻBIETA PANCER-KOTEJOWA (forest communities of S Poland, ecology of vascular plants – *Rubus hirtus* and *Luzula* species)

STAFF ● Dr. ALICJA ĆWIKOWA (vegetation of the *Alno-Padion* alliance)
 Dr. WOJCIECH RÓŻAŃSKI (forest flora and vegetation of the Carpathians, numerical classification)
 Dr. JERZY SZWAGRZYK (forest flora and vegetation of the Carpathians, population dynamics and structure of *Fagus sylvatica* and *Abies alba*)

RESEARCH ● forest flora and vegetation of S Poland (chiefly the Carpathian Mts)

LOAN ● not available at present

EXCHANGE ● not carried

LUBLIN ● *Department of Systematics and Phytogeography, Institute of Biology, Maria Curie-Skłodowska University (Zakład Systematyki i Geografii Roślin, Instytut Biologii, Uniwersytet im. Marii Curie-Skłodowskiej)* - (LBL, LBL-A, LBL-B, LBL-L)

ADDRESS ● ul. Akademicka 19, 20-033 Lublin; tel. 382-71, ext. 21

FOUNDATION ● institution - 1945; herbarium - 1946

SPECIMENS ● total 325.700 [vascular plants (LBL) - 162.500; bryophytes (LBL-B), mosses 99.500; liverworts, 12.500; lichens (LBL-L) about 50.000; algae (LBL-A) - 1.200 (*Charophyta*)]

GEOGR AREA ● vascular plants of Poland; bryophytes of the world; worldwide collection of *Usneaceae*

IMPORT COLL ● J. MOTYKA (Carpathian and Scandinavian lichens; *Usneaceae* of the world - about 900 types); 86 isotypes and paratypes of mosses from the Holarctic and S America; T. SULMA (lichens) from Eastern Carpathians - 2.000; F. ŚWIĘS (Mongolian Khentei Mts - 2.500)

DIRECTOR ● Prof. Dr. DOMINIK FIJAŁKOWSKI (floristics, vascular flora and vegetation of the Lublin District (E Poland), phytogeography, phytosociology, nature protection)

CURATORS ● LBL-A, LBL-B - Prof. Dr. KAZIMIERZ KARZMARZ (bryophytes of Holarctica and S America, *Charophyta* of Central and E Europe; taxonomy and phytogeography)

LBL-L - Doc. Dr. JAN BYSTREK (Polish, Holarctic and African lichens - taxonomy and distribution)

LBL - Doc. Dr. FLORIAN ŚWIĘS (flora and vegetation of the Beskid Niski range (the Polish Carpathians) and Sandomierz Basin); vegetation of the Khentei Mts in Mongolia)

STAFF ● M. Sc. MAREK BLOCH (mosses of SE Poland; peat mosses)

Dr. MIROSLAW BLOCH (taxonomy and distribution of *Sphagnum*; mosses of SE Poland)

M. Sc. KATARZYNA GÓRZYŃSKA (lichens of the Lublin region)

Dr. WIESŁAWA KRZACZEK (vascular plants of the Lublin region, genus *Rosa* in Poland)

Dr. ANNA ŁUCZYCKA-POPIEL (forest vegetation of the Lublin region)

Dr. MARIA MOTYKA-ZGŁOWBICKA (lichens of the Lublin region)

Dr. BARBARA TARANOWSKA (segetal weed communities of the Lublin Highland)

Dr. MARIA WAWER (forest and water vegetation of the Lublin region)

RESEARCH ● flora and vegetation of SE Poland

LOAN ● to recognized botanical institutions

EXCHANGE ● available – plants of all groups from SE Poland; wanted – plants from different regions of the world, mainly from the Northern Hemisphere

P & S WORKS ● *Plantae Phanerogamae Exsiccatae Palatinatus Lublinensis*; *Musci Exsiccati Palatinatus Lublinensis*; *Hepaticae Exsiccatae Palatinatus Lublinensis*; *Musci Europae Orientalis Exsiccati*; *Musci et Hepaticae Mongoliae Exsiccatae*; *Hepaticae Europae Orientalis Exsiccatae*; *Charophyta Poloniae Exsiccata*

REMARKS ● LBLC incorporated into LBL (LBL-A, LBL-B, LBL-L)

LITERATURE ● KORNAŚ J., ZURZYCKI J. 1959. Botany in Poland. 35 pp. Jagiellonian University and the Polish Academy of Sciences (Cracow Centre). Cracow.

LUBLIN ● Department of General Botany, Institute of Biology, Maria Curie-Skłodowska University (Zakład Botaniki Ogólnej, Instytut Biologii, Uniwersytet im. Marii Curie-Skłodowskiej) – LBLM

ADDRESS ● ul. Akademicka 19, 20-033 Lublin; tel. 382-71

FOUNDATION ● institution – 1944; herbarium – 1965

SPECIMENS ● 25.000 [fungi]

GEOGR AREA ● fungi of Central and Eastern Europe

HEAD & CUR ● Prof. Dr. BOGUSŁAW SALATA (phytopathogenic fungi)

STAFF ● Dr. MARIA A. CHMIEL (*Discomycetes* of S Poland)

- M. Sc. ZOFIA FLISIŃSKA (higher fungi of the Lublin region)
Dr. WIESŁAW MULENKO (phytopathogenic micromycetes of SE Poland)
Dr. JOANNA ROMASZEWSKA-SALATA (phytopathogenic micromycetes of S Poland)

- LOAN ● to recognized botanical institutions
EXCHANGE ● *available* - phytopathogenic fungi of S Poland; *wanted* - phytopathogenic fungi of the world.

LÓDŹ ● *Department of Botany, Institute of Environmental Biology, Łódź University (Zakład Botaniki, Instytut Biologii Środowiskowej, Uniwersytet Łódzki) - LOD*

- ADDRESS ● ul. S. Banacha 12/16, 90-237 Łódź; tel. 78-13-14
FOUNDATION ● institution - 1946; herbarium - 1946
SPECIMENS ● total 334.000 [vascular plants - 300.000; bryophytes - 7.000; lichens - 10.000; fungi - 17.000]
GEOGR AREA ● regional collection from central Poland
IMPORT COLL. ● M. ŁAWRYNOWICZ (hypogeous fungi of Poland - 15.000)
DIRECTOR ● Prof. Dr. ROMUALD OLACZEK (geobotany, nature protection)
CURATORS ● Doc. Dr. RYSZARD SOWA (synanthropic flora and vegetation of Central Poland)
Vascular plants - Dr. LUCYNA FAGASIEWICZ (geobotany, floristics)
Mosses - Dr. EWA FILIPIAK (bryology, geobotany)
Lichens - Dr. KRYSZYNA CZYZEWSKA (lichenology, geobotany)
Fungi - Doc. Dr. MARIA ŁAWRYNOWICZ (taxonomy and chorology of hypogeous fungi)
STAFF ● Dr. JANUSZ HEREŹNIAK (dendrology, geobotany, vascular plants of the Kraków-Wieluń Upland)
Dr. JANINA JAKUBOWSKA-GABARA (geobotany)
Dr. JÓZEF K. KUROWSKI (geobotany)
Dr. JAN T. SICIŃSKI (agrophytocenology)
Dr. AURELIA U. WARCHOLIŃSKA (agrophytocenology)
M. Sc. HIERONIM ANDRZEJEWSKI (geobotany, eco-

- logy)
 M. Sc. LESZEK KUCHARSKI (geobotany)
 M. Sc. LUDWIK SAMOSIEJ (hygrobotany)
 M. Sc. PIOTR WITOSŁAWSKI (geobotany)
- RESEARCH ● flora and vegetation of Central Poland: segetal and ruderal flora
- LOAN ● with special permission of director; generally not available at present
- EXCHANGE ● *available* – plants from Central Poland; *wanted* – Holarctic plants of different regions
- P & S WORKS ● *Acta Universitatis Lodziensis – Folia Botanica; Acta Universitatis Lodziensis – Folia Zoologica*
- LITERATURE ● OLACZEK R., SOWA R. 1959. Herbarium Universitatis Lodziensis. Zielnik Katedry Systematyki i Geografii Roślin Uniwersytetu Łódzkiego. *Wiadomości Botaniczne*, 3/4: 239–240.
 KORNAŚ J., ZURZYCKI J. 1959. Botany in Poland. 35 pp. Jagiellonian University and the Polish Academy of Sciences (Cracow Centre). Cracow.
- OJCÓW ● *The Professor Władysław Szafer Museum, Ojców National Park (Muzeum im. Profesora Władysława Szafera, Ojcowski Park Narodowy) – OPN*
- ADDRESS ● Dom 'Pod Lokietkiem', 32–047 Ojców; tel. 40
- FOUNDATION ● institution – 1965; herbarium – 1965
- SPECIMENS ● 1.000 [vascular plants]
- GEOGR AREA ● local collection (vascular plants of the Ojców National Park)
- HEAD ● M. Sc. JÓZEF PARTYKA
- CURATOR ● M. Sc. ANDRZEJ BIDERMAN (ecology of vascular plants, nature protection)
- LOAN ● normal regulation
- EXCHANGE ● not carried
- CUR PROCED ● specimens are mounted on herbarium sheets and stored in cardboard boxes in holders. Sheet size: 30 x 43 cm

OLSZTYN ● *Department of Botany, Agricultural-Technical Academy (Katedra Botaniki, Akademia Rolniczo-Techniczna) - OLS*

ADDRESS ● 10-957 Olsztyn-Kortowo, bl. 17; tel. 286-80

FOUNDATION ● institution - 1950; herbarium - 1965

SPECIMENS ● 11.000 [vascular plants]

GEOGR AREA ● local collection from NE Poland

DIRECTOR ● Prof. Dr. BENON POLAKOWSKI (geobotany)

CURATOR ● M. Sc. EMIRA LAMPERSKA

RESEARCH ● flora and vegetation of NE Poland

LOAN ● to recognized botanical institutions

EXCHANGE ● *available* - vascular plants from NE Poland; *wanted* - vascular plants from Europe

CUR PROCED ● specimens are stored on herbarium sheets in cabinets and filed in systematic order. Sheet size: 30 x 43 cm

OLSZTYN ● *Department of Grassland Sciences, Agricultural-Technical Academy (Katedra Łąkarstwa, Akademia Rolniczo-Techniczna) - OLSZ*

ADDRESS ● 10-957 Olsztyn-Kortowo, bl. 17; tel. 283-89, 284-93

FOUNDATION ● institution - 1952; herbarium - 1954

SPECIMENS ● total 10.300 [vascular plants - 7.600; bryophytes - 2.700]

GEOGR AREA ● local collection; plants from NE Poland

DIRECTOR ● Doc. Dr. MIECZYSLAW OLKOWSKI

CURATOR ● Dr. LONGIN OLESIŃSKI (flora of NE Poland)

RESEARCH ● vascular plant flora and bryophytes from NE Poland

LOAN ● to recognized botanical institutions

EXCHANGE ● *available* - vascular plants and bryophytes from NE Poland; *wanted* - *Gramineae*, *Papilionaceae* (chiefly *Lotus*) from different regions of the world

OLSZTYN ● *Department of Botany, Institute of Biology, Teachers College in Olsztyn (Zakład Botaniki, Instytut Biolo-*

gii, Wyższa Szkoła Pedagogiczna) - OLTC

- ADDRESS** ● ul. Żołnierska 14, 10-561 Olsztyn; tel. 33-61-20, ext. 57
- FOUNDATION** ● institution - 1962; herbarium - 1965(1970)
- SPECIMENS** ● 10.200 [vascular plants - 10.000; bryophytes - 200]
- GEOGR AREA** ● regional collection from NE Poland; trees and shrubs from Poland and other European countries; host plants of *Viscum*
- HEAD** ● Dr. PIOTR STYPIŃSKI (dendrology)
- CURATOR** ● M. Sc. IZYDOR KRAWCZYK (floristics)
- STAFF** ● Dr. MARIA DYNOWSKA (mycology)
M. Sc. PAWEŁ LARO (floristics)
M. Sc. HANNA CIECIERSKA (aquatic vegetation, hydrobotany)
- RESEARCH** ● flora and vegetation of NE Poland, dendrology
- LOAN** ● to local institutions only
- EXCHANGE** ● *available* - plants from NE Poland; *wanted* - dendrological collections
- CUR PROCED** ● specimens mounted on herbarium sheets and stored in boxes in cabinets in taxonomic order. Sheet size: 28 x 42 cm
- OLSZTYN** ● *Museum of Warmia and Masuria (Muzeum Warmii i Mazur) - OMWM*
- ADDRESS** ● ul. Zamkowa 2, 10-074 Olsztyn; tel. 27-20-39
- FOUNDATION** ● institution - 1945; herbarium - 1945
- SPECIMENS** ● 1.923 [vascular plants only]
- GEOGR AREA** ● local collection
- IMPORT COLL** ● H. STEFFEN (462 sheets from 1914-1928)
- DIRECTOR** ● Dr. JERZY SIKORSKI (history)
- CURATOR** ● M. Sc. WACŁAW RADZIWINOWICZ (geography)
- LOAN** ● not available at present
- EXCHANGE** ● not carried

- OPOLE** ● *Museum of Opolian Silesia (Muzeum Śląska Opolskiego) - OPOL*
- ADDRESS** ● Mały Rynek 7, 45-020 Opole; tel. 366-77, 346-11
- FOUNDATION** ● institution - ?; herbarium - ?
- SPECIMENS** ● about 5.000 [vascular plants]
- GEOGR AREA** ● local collection (chiefly synanthropic flora of the Opole region)
- IMPORT COLL** ● Doc. Dr. S. MICHALAK (synanthropic flora of the Opole region)
- DIRECTOR** ● M. Sc. MARIA MYGA
- LOAN** ● not available at present
- EXCHANGE** ● not carried
-
- POZNAŃ** ● *Department of Pharmaceutical Botany, Medical Academy (Katedra i Zakład Botaniki Farmaceutycznej, Akademia Medyczna) - PBMA*
- ADDRESS** ● ul. Wieniawskiego 1, 61-712 Poznań; tel. 52-43-76
- FOUNDATION** ● institution - ? ; herbarium - 1963
- SPECIMENS** ● about 40.000 [vascular plants]
- GEOGR AREA** ● local collection
- HEAD & CUR** ● Prof. Dr. LUTOSŁAWA SKRZYPCZAK
- LOAN** ● to recognized botanical institutions
- EXCHANGE** ● not carried
- CUR PROCED** ● specimens filed in taxonomical order on herbarium sheets in boxes in holders. Sheet size: 29 x 42 cm
-
- POZNAŃ** ● *Department of Plant Taxonomy, Faculty of Biology, Adam Mickiewicz University (Zakład Taksonomii Roślin, Wydział Biologii, Uniwersytet im. Adama Mickiewicza) - POZ*
- ADDRESS** ● Al. Niepodległości 14, 61-713 Poznań; tel. 52-05-18
- FOUNDATION** ● institution - 1919; herbarium - 1919
- SPECIMENS** ● total 175.000 [vascular plants - 150.000; lichens - 25.000]

- GEOGR AREA** ● vascular plants and lichens of Poland and Europe
- IMPORT COLL** ● J. PACZOSKI (Balkan Peninsula 9.000), G. A. RITSCHL (Silesia and Central and West Poland, XIX century - 5.000), SCHENK (about 6.000 from different regions of Central and Western Europe), WALTER (North America 1.200)
- DIRECTOR** ● Prof. Dr. WALDEMAR ŻUKOWSKI (*Cyperaceae*)
- CURATOR** ● Doc. Dr. KAROL LATOWSKI (*Cruciferae, Umbelliferae*)
- STAFF** ● M. Sc. BOGDAN JACKOWIAK (chorology of vascular plants)
Dr. MAŁGORZATA KLIMKO (taxonomy of *Cyperaceae*)
M. Sc. JULIAN CHMIEL (chorology of vascular plants)
- RESEARCH** ● experimental and numerical taxonomy, flora of Poland and Europe, ruderal and segetal flora of Poland
- LOAN** ● to recognized botanical institutions
- EXCHANGE** ● *available* - plants of Poland and Europe; *wanted* - Holarctic phanerogams
- P & S WORKS** ● *Lichenotheca Polonica*
- REMARKS** ● see also chapter 'Private herbaria' - W. ŻUKOWSKI
- LITERATURE** ● PACZOSKI J. 1933. Zielnik Zakładu Botaniki Systematycznej Uniwersytetu Poznańskiego. Wydawnictwo Okręgowego Komitetu Ochrony Przyrody na Wielkopolską i Pomorze w Poznaniu 4: 3-4
- POZNAŃ** ● *Department of Geobotany, Faculty of Biology Adam Mickiewicz University (Zakład Geobotaniki, Wydział Biologii, Uniwersytet im. Adama Mickiewicza) - POZG*
- ADDRESS** ● Al. Niepodległości 14, 61-713 Poznań; tel. 52-00-01
- FOUNDATION** ● institution -1919; herbarium - 1925
- SPECIMENS** ● total 220.000 [vascular plants - about 140.000; mosses - 80.000]
- GEOGR AREA** ● worldwide mosses, phanerogams of the tropics, mainly from Central Africa

- IMPORT COLL ● S. LISOWSKI (bryophytes and vascular plants from Poland, Central Asia, Central Africa, Guinea and Zaire)
- TYPES ● many types of African vascular plants and bryophytes
- HEAD ● Prof. Dr. STANISŁAW LISOWSKI (tropical botany, vascular plants and mosses)
- CURATOR ● Dr. PIOTR SZMAJDA (taxonomy and chorology of mosses, synanthropic floras, theoretical biology with special reference to phytogeography)
- STAFF ● M. Sc. BARBARA BRYLSKA (taxonomy of African vascular plants)
 M. Sc. IWONA MELOSİK (taxonomy and chorology of *Sphagnum*)
 Dr. HANNA RUSIŃSKA (floristics and ecology of Polish mosses)
- RESEARCH ● taxonomy and chorology of mosses, tropical vascular plants – mainly Africa, geobotany, theoretical biology
- LOAN ● to recognized botanical institutions
- EXCHANGE ● *available and wanted* – vascular plants and mosses from tropical Africa and Europe
- P & S WORKS ● *Bryotheca Polonica, Musci ex Montibus Vranica Bosnia (Yugoslavia), Bryophytes d'Afrique Centrale Ersiccatés, Mousses d'Afrique Occidentale*
- LITERATURE ● SZMAJDA P. 1979. Investigations on mosses at Adam Mickiewicz University in Poznań, Poland. *Abstracta Botanica* 5 Supplementum 3: 15–31.
- POZNAŃ ● *Department of Plant Ecology and Environmental Protection, Faculty of Biology, Adam Mickiewicz University (Zakład Ekologii Roślin i Ochrony Przyrody, Wydział Biologii, Uniwersytet im. Adama Mickiewicza) – POZM*
- ADDRESS ● Al. Niepodległości 14, 61–713 Poznań; tel. 52–00–01
- FOUNDATION ● institution – 1919; herbarium – 1960
- SPECIMENS ● 9.300 [macrofungi]

- GEOGR AREA** ● regional collection; chiefly Poland, some specimens from Central Europe and N America
- HEAD** ● Doc. Dr. STANISŁAW BALCERKIEWICZ (phytosociology)
- CURATOR** ● Prof. Dr. MARIA LISIEWSKA (macrofungi)
- STAFF** ● Doc. Dr. ANNA BUJAKIEWICZ (macrofungi)
- LOAN** ● to recognized botanical institutions
- EXCHANGE** ● limited
- CUR PROCED** ● specimens are stored in envelopes (10 x 15 cm) in cardboard boxes in holders
- POZNAŃ** ● *Department of Botany, Agricultural Academy (Katedra Botaniki, Akademia Rolnicza) - POZNB*
- ADDRESS** ● ul. Wojska Polskiego 71c, 60-625 Poznań; tel. 22-49-01, ext. 23
- FOUNDATION** ● institution - 1919; herbarium - 1919
- SPECIMENS** ● total 4.850 [vascular plants - 4.000; bryophytes - 500; fungi - 100; lichens - 100; algae - 150]
- GEOGR AREA** ● local collection
- IMPORT COLL** ● W. KULEZA (*Rubus* 200), W. STEFANEK (*Rosa* 500), M. NOWIŃSKI, K. STECKI
- HEAD** ● Prof. Dr. STANISŁAW KRÓL (dendrology, ecology)
- CURATOR** ● Dr. CZESŁAW MIELCARSKI (phytosociology)
- STAFF** ● Dr. HENRYK KUŚWIK (taxonomy and distribution of *Taxus*)
 Dr. WANDA STEFANEK (genus *Rosa* in Wielkopolska)
 M. Sc. PIOTR URBAŃSKI (chorology of mosses in the Drawsko Lakeland)
 Dr. WANDA STERNA (carpology and taxonomy of grasses)
- LOAN** ● only to Polish institutions
- EXCHANGE** ● *available* - *Rosaceae*, mosses; *wanted* - plants from Poland
- POZNAŃ** ● *Department of Forest Botany, Agricultural Academy*

in Poznań (Katedra Botaniki Leśnej, Akademia Rolnicza) - POZNF

ADDRESS ● ul. Wojska Polskiego 71d, 60-625 Poznań; tel. 22-49-01, ext. 24, 30

FOUNDATION ● institution - ?; herbarium - 1920

SPECIMENS ● 7.000 [vascular plants 4.000, lichens 3.000]

GEOGR AREA ● regional collection

HEAD & CUR ● Doc. Dr. KAZIMIERZ GLANC (lichenology)

STAFF ● Dr. WŁADYSŁAW DANIELEWICZ (dendrology, *Betula carpatica*)

RESEARCH ● lichenology, dendrology

CUR PROCED ● specimens filed in alphabetical order on herbarium sheets in boxes in cabinets

POZNAŃ ● Department of Genetics, Faculty of Biology, Adam Mickiewicz University (Zakład Genetyki, Wydział Biologii, Uniwersytet im. Adama Mickiewicza) - POZW

ADDRESS ● ul. J. Dąbrowskiego 165, 60-594 Poznań; tel. 448-70

FOUNDATION ● institution - 1968; herbarium - 1945

SPECIMENS ● about 30.000 [*Hepaticae*]

GEOGR AREA ● Polish and Holarctic liverworts

HEAD & CUR ● Prof. Dr. JERZY SZWEYKOWSKI (population genetics; chorology of Holarctic liverworts; taxonomy of *Lophoziaceae*, *Jungermanniaceae*, *Marsupellaceae*, liverworts of the Tatra Mts)

STAFF ● Dr. MARIA ANNA BOBOWICZ (numerical taxonomy - *Pinus* and *Conocephalum*, hybridization in *Pinus*)

Doc. Dr. MARIA KRZAKOWA (enzyme variability of natural populations - *Hepaticae*, *Pinus*, *Bromus*, *Melilotus*, *Pisum*)

Doc. Dr. WIESŁAW PRUS-GŁOWACKI (enzyme variability and serology of the *Hepaticae* and *Pinus*)

Dr. IRENEUSZ ODRZYKOWSKI (chemotaxonomy, enzyme variability of natural populations of *Conocephalum*)

Dr. LECH URBANIAK (phenolic compounds and ter-

penoids variability in natural populations of *Carex arenaria*)

- RESEARCH ● population genetics, taxonomy and chorology of Holarctic liverworts
- LOAN ● to recognized botanical institutions
- EXCHANGE ● *available* – Polish liverworts, many taxa from the Tatra Mts; *wanted* – any liverworts, mainly Holarctic ones
- P & S WORKS ● *Atlas rozmieszczenia roślin zarodnikowych w Polsce. Seria III. Wątrobowce (Atlas of the geographical distribution of spore plants in Poland. Series III. Hepaticae)*
- REMARKS ● POZW is a hepatic herbarium housed separately from the main University herbarium POZ.

PULAWY ● *Institute of Soil Sciences and Cultivation of Plants (Instytut Uprawy, Nawożenia i Gleboznawstwa) – IUNG*

- ADDRESS ● Osada Pałacowa, 24-1000 Puławy; tel. 34-21
- FOUNDATION ● institution – 1917; herbarium – 1891-1895
- SPECIMENS ● 6.000 [vascular plants]
- GEOGR AREA ● regional collection, mainly from territory of Poland and the European part of the U.S.S.R.
- DIRECTOR ● Prof. Dr. STANISŁAW NAWROCKI (agriculture)
- CURATOR ● M. Sc. HENRYK STASIAK (floristics, plant taxonomy)
- STAFF ● Dr. IRENA JACKOWSKA (plant morphology, physiology)
Doc. Dr. ANNA JÓZEFACIUK (grassland communities)
M. Sc. JAN PIĘTA (forest botany)
Dr. LUCYNA PUSZKAR (phytosociology)
Agricult. Eng. BOGUMIŁ RĘBOWSKI (decorative plants)
Dr. ADAM WOLEK (dendrology)
- RESEARCH ● forest and agricultural botany; dendrology
- LOAN ● not available at present

- EXCHANGE ● not carried
- P & S WORKS ● *Pamiętnik Puławski*
- BOT GARDEN ● about 2 ha; dendrological collection – about 300 taxa of trees, shrubs and climbers; collection of tulips, narcissi – about 250 cultivars
- LITERATURE ● KORNAŚ J., ZURZYCKI J. 1959. Botany in Poland. 35 pp. Jagiellonian University and the Polish Academy of Sciences (Cracow Centre). Cracow.
WOLK A., STASIAK H., RĘBOWSKI B. 1987. Spis drzew i krzewów Ogrodu Puławskiego (w układzie alfabetycznym). 23 pp. Puławy
- ROGÓW** ● *Arboretum, Warsaw Agricultural University in Rogów (Arboretum, Leśny Zakład Doświadczalny SGGW-AR) – ROGA*
- ADDRESS ● Leśny Zakład Doświadczalny SGGW-AR, 96-135 Rogów; tel. 20
- FOUNDATION ● institution – 1925; herbarium – 1953
- SPECIMENS ● 500 [vascular plants – mainly genus *Acer*; collection of cones and berry-like cones of 230 taxa]
- GEOGR AREA ● Holarctic dendroflora (woody plants)
- DIR & CUR ● Dr. JERZY TUMIŁOWICZ (dendrology and forestry, *Abies, Acer* and *Stewartia*)
- LOAN ● not available at present
- EXCHANGE ● not carried
- P & S WORKS ● *Index Seminum*
- BOT GARDEN ● Arboretum about 60 ha [collection of trees and shrubs – 1.900 taxa, herbaceous plants – 300 taxa]
- RZESZÓW** ● *Department of Botany, Field Faculty of Economy of Agricultural Production, H. Kollątaj Agricultural Academy in Cracow (Pracownia Botaniki, Wydział Ekonomiki Produkcji Rolniczej, Filia Akademii Rolniczej im. H. Kollątaja w Krakowie) – RZS*
- ADDRESS ● ul. M. Œwiklińskiej 2, 35-959 Rzeszów; tel. 412-55
- FOUNDATION ● institution – 1973; herbarium – 1984

- SPECIMENS** ● about 2.000 [vascular plants]
GEOGR AREA ● local collection, mainly weedy plants
HEAD & CUR ● Dr. ZYGMUNT WNUK (agroecology)
STAFF ● M. Sc. DANUTA GRZEBYK (agroecology)
RESEARCH ● flora and vegetation of cultivated grounds in the Rzeszów Province
LOAN ● to local institutions only
EXCHANGE ● not carried

SIEDLCE ● *District Museum (Muzeum Okręgowe)* – **SMOK**

- ADDRESS** ● ul. K. Świerczewskiego 1, 08-110 Siedlce; tel. 242-24
FOUNDATION ● institution – 1928 (reactivated in 1967); herbarium – 1981
SPECIMENS ● 2.000 [vascular plants]
GEOGR AREA ● local collection
DIRECTOR ● M. Sc. ZOFIA WIĘCKOWSKA (filology)
CURATOR ● M. Sc. ANDRZEJ BOHDANOWICZ (biology)
RESEARCH ● vascular plants of the Siedlce region
LOAN ● not available at present
EXCHANGE ● not carried

SIEDLCE ● *Department of Botany, Teachers Agricultural College (Zakład Botaniki, Wyższa Szkoła Rolniczo-Pedagogiczna)* – **WSRP**

- ADDRESS** ● ul. B. Prusa 12, 08-110 Siedlce; tel. 252-93, 252-94
FOUNDATION ● institution – 1969; herbarium – 1971
SPECIMENS ● total 21.600 [vascular plants – 21.000; lichens – 600]
GEOGR AREA ● regional herbarium; flora of Central East Poland
HEAD ● Doc. Dr. EUGENIUSZ ĆWIKLIŃSKI (geobotany)
CURATOR ● Dr. ZYGMUNT GŁOWACKI (geobotany)
RESEARCH ● flora and vegetation of Central East Poland
LOAN ● to recognized botanical institutions

- EXCHANGE** ● not carried
- SŁUPSK** ● *Department of Botany, Faculty of Biology, Teachers College (Zakład Botaniki, Katedra Biologii, Wyższa Szkoła Pedagogiczna) – SLTC*
- ADDRESS** ● ul. Arciszewskiego 22, 76–200 Słupsk; tel. 72–91
- FOUNDATION** ● institution – 1969; herbarium – 1969
- SPECIMENS** ● about 33.000 [vascular plants – 30.000; lichens – 3.000]
- GEOGR AREA** ● flora of Pomerania and coastal areas; regional collection, vascular plants of the Siedlce region and vascular plants of the Słupsk region
- HEAD & CUR** ● Doc. Dr. JÓZEF MISIEWICZ (plant ecology, geobotany; vascular plants of Pomerania)
- STAFF** ● Dr. IRENEUSZ IZYDOREK (lichens of Pomerania)
- RESEARCH** ● vascular plant and lichen flora of Central Pomerania
- LOAN** ● to local institutions (Polish) only
- EXCHANGE** ● not carried
- P & S WORKS** ● *Słupskie Prace Matematyczno-Przyrodnicze*
- CUR PROCED** ● specimens filed in alphabetical order in boxes in holders
- SOSNOWIEC** ● *Laboratory of Pharmaceutical Botany, Silesian Medical Academy in Katowice (Zakład Botaniki Farmaceutycznej, Śląska Akademia Medyczna w Katowicach) – SOSN*
- ADDRESS** ● ul. Jagiellońska 4, 41–200 Sosnowiec; tel. 69–58–35
- FOUNDATION** ● institution – 1978; herbarium – 1978
- SPECIMENS** ● total 24.000 [vascular plants – 4.000; bryophytes – 20.000]
- GEOGR AREA** ● regional collection, mainly plants from Silesia and the West Carpathians
- HEAD** ● Doc. Dr. KRZYSZTOF JĘDRZEJKO (floristics – mosses and vascular plants, phytosociology, Silesian region)

- CURATOR** ● Dr. J. ŻARNOWIEC (floristics, ecology, phytosociology, flora of the town of Oświęcim)
- STAFF** ● Dr. H. KLAMA (liverworts of the Beskid Żywiecki)
- RESEARCH** ● flora and vegetation of S Poland
- LOAN** ● to recognized botanical institutions
- EXCHANGE** ● *available* – plants from the Silesian highland and the Western Beskids; *wanted* – plants of S Poland
- P & S WORKS** ● *Musci Macroregioni Meridionali Poloniae exsiccati*
- SZCZECIN** ● *Department of Botany, Faculty of Agriculture, Academy of Agriculture (Katedra Botaniki, Wydział Rolniczy, Akademia Rolnicza) – SZCZ*
- ADDRESS** ● ul. J. Słowackiego 17, 71-434 Szczecin; tel. 760-71, ext. 250, 252, 341
- FOUNDATION** ● institution – 1955; herbarium – 1955
- SPECIMENS** ● total 11.700 [vascular plants – 3.500; bryophytes – 7.000; macrofungi (*Macromycetes*) – 1.000; marine algae – 200]
- GEOGR AREA** ● regional collection, mainly from West Pomerania
- HEAD & CUR** ● Prof. Dr. MIECZYSLAW JASNOWSKI (bryology, geobotany, vegetation and stratigraphy of peat bogs)
- RESEARCH** ● peat bog vegetation and stratigraphy
- LOAN** ● to recognized botanical institutions
- EXCHANGE** ● not carried
- P & S WORKS** ● *Zeszyty Naukowe Akademii Rolniczej w Szczecinie*
- CUR PROCED** ● specimens filed in taxonomical order on herbarium sheets in cabinets or in cardboard boxes in holders. Sheet jacket size: 29 x 42 cm (vascular plants) and 14.5 x 21 cm (bryophytes)
- REMARKS** ● additional collection about 140 slides of European *Sphagnum* species (each species represented by 3 slides)
- SZCZECIN** ● *Department of Plant Pathology, Academy of Agriculture, Szczecin (Katedra Fitopatologii, Akademia Rolnicza w Szczecinie) – SZPA*

- ADDRESS** ● ul. Słowackiego 17, 71-434 Szczecin; tel. 760-71 ext. 229
- FOUNDATION** ● institution - 1954; herbarium - 1982
- SPECIMENS** ● 1.110 [vesicular-arbuscular mycorrhizal fungi (*Endogonaceae*) and E-strain ectendomycorrhizal fungi from Poland, Germany and Czechoslovakia]
- DIRECTOR** ● Doc. Dr. TADEUSZ MADEJ (plant ecology)
- CURATOR** ● Dr. JANUSZ BŁASZKOWSKI (plant pathology, taxonomy of the *Endogonaceae*)
- RESEARCH** ● taxonomy, occurrence and geographic distribution of the *Endogonaceae* in Poland
- LOAN** ● to recognized botanical institutions
- EXCHANGE** ● *available* and *wanted* - any specimens of *Endogonaceae*
- P & S WORKS** ● *Zeszyty Naukowe Akademii Rolniczej w Szczecinie*
- CUR PROCED** ● Specimens are mounted on microscopic slides in polyvinyl alcohol solutions, with or without lactophenol and in formaldehyde in small vials
- REMARKS** ● all specimens are stored in the Department of Plant Pathology
- SZCZECIN** ● *Department of Botany, Szczecin University (Zakład Botaniki, Uniwersytet Szczeciński) - SZUB*
- ADDRESS** ● ul. Felczaka 3a, 71-412 Szczecin; tel. 23-01-28
- FOUNDATION** ● institution - 1986; herbarium - 1987
- SPECIMENS** ● about 5.000 [vascular plants]
- GEOGR AREA** ● regional collection (plants of the Szczecin and Kielce regions)
- HEAD** ● Prof. Dr. TADEUSZ GŁĄZEK (phytosociology, floristics)
- RESEARCH** ● flora and vegetation of the Szczecin region
- LOAN** ● to recognized botanical institutions
- EXCHANGE** ● not carried
- CUR PROCED** ● specimens are filed on herbarium sheets and in boxes. Sheet size: 31 x 43 cm

- TORUŃ** ● *Institute of Biology, Nicolaus Copernicus University (Instytut Biologii, Uniwersytet im. Mikołaja Kopernika) – TRN*
- ADDRESS** ● ul. J. Gagarina 9, 87–100 Toruń; tel. 134–53
- FOUNDATION** ● institution – 1945; herbarium – 1946
- SPECIMENS** ● total 196.500 including some paratypes [vascular plants – 190.000; bryophytes – 3.500; lichens – 3.000]
- GEOGR AREA** ● mainly vascular plants from Europe
- IMPORT COLL** ● collection of the former Gdańsk Museum, J. ZABŁOCKI's (7.500) and RIENER's (3.850) collection plants from Japan
- DIRECTOR** ● Prof. Dr. KLEMENS KĘPCZYŃSKI (phytosociology, floristics)
- CURATOR** ● Dr. WANDA GUGNACKA-FIEDOR (taxonomy of vascular plants)
- STAFF** ● Dr. URSZULA BOIŃSKA (taxonomy of vascular plants)
Dr. MARIAN BOIŃSKI (floristics – vascular plants)
Doc. Dr. MIROSLAWA CEYNOWA-GIELDOŃ (plant taxonomy)
Doc. Dr. MARIAN REJEWSKI (aquatic plants)
- RESEARCH** ● flora and vegetation of N and Central Poland (vascular plant taxonomy)
- LOAN** ● to recognized botanical institutions
- EXCHANGE** ● *available* – plants from N and Central Poland; *wanted* – vascular plants, bryophytes and lichens of the Holarctic.
- P & S WORKS** ● *Acta Universitatis Nicolai Copernici, Seria Biologia; Ezsiccata Toruniensia*
- CUR PROCED** ● Specimens are mounted on herbarium sheets and stored in cardboard boxes in wooden cabinets in taxonomical order. Sheet size: 28.5 x 42.5 cm
- REMARKS** ● type specimens are stored with the rest of collection under basionyms
- LITERATURE** ● KORNAŚ J., ZURZYCKI J. 1959. Botany in Poland. 35 pp. Jagiellonian University and the Polish Academy of Sciences (Cracow Centre). Cracow.

WALBRZYCH ● *Regional Museum (Muzeum Okręgowe)* – **WALM**

ADDRESS ● ul. 1-go maja 9, 58-300 Wałbrzych; tel. 248-45

FOUNDATION ● institution – 1947; herbarium – 1908

SPECIMENS ● 6.000 [fossil plants]

GEOGR AREA ● Silesian fossil plants

IMPORT COLL ● **FRANZ ZIMMERMANN's** collection

DIRECTOR ● M. Sc. **STANISŁAW ZYDLIK** (law)

CURATOR ● M. Sc. **MAREK PAKIET** (paleozoology)

STAFF ● M. Sc. **EUROZYN SAGAN** (emeritus)

LOAN ● not available at present

EXCHANGE ● not carried

REMARKS ● the other part of **ZIMMERMANN's** collection is stored in the Institute of Geological Sciences, Wrocław University. For further information see also **SAGAN E.**, 1983. *Atlas roślin karbońskich (na podstawie zbiorów Muzeum Okręgowego w Wałbrzychu) Rośliny skrzypowe (Equisetophyta)*. 80 pp. Wałbrzych

WARSZAWA ● *Department of Systematics and Phytogeography, Institute of Botany, Warsaw University (Zakład Systematyki i Geografii Roślin, Instytut Botaniki, Uniwersytet Warszawski)* – **WA**

ADDRESS ● Al. Ujazdowskie 4, 00-478 Warszawa; tel. 28-75-15

FOUNDATION ● institution – 1919; herbarium – 1919

SPECIMENS ● 300.700 [vascular plants – 205.000, bryophytes – 50.000, fungi and myxomycetes – 28.700, lichens – 11.000, algae – 6.000]

GEOGR AREA ● world-wide, all groups from the Holarctic and Africa

IMPORT COLL ● vascular plants – **F. BŁOŃSKI**, **F. KARO**, **S. KRUPKO** (Africa, SW Asia), **K. ŁAPCZYŃSKI**, **K. DRYMMER**, **T. WIŚNIEWSKI**, **B. HRYNIEWIECKI**, **J. ZABŁOCKI** (*Carex* and *Viola*), **H. CZECZOTT** (Crimea); – bryophytes **T. CHAŁUBIŃSKI** reference herbarium to *Enumeratio muscorum frondosorum tatrensium hucusque cognitorum*, **G. L. RABENHORST**, **T. WIŚNIEWSKI** (Africa); fungi – **W.** and **J. ZABŁOCKI**,

L. GARBOWSKI, A. MICHALSKI, K. DRYMMER

DIRECTOR ● Doc. Dr. ANDRZEJ BATKO (aquatic microfungi, numerical taxonomy)

CURATOR ● M. Sc. MIROSLAWA KOPIJ (vascular plants)

STAFF ● Dr. ALICJA BOROWSKA (fungi - *Deuteromycetes*)

Dr. WANDA RUDNICKA-JEZIERSKA (fungi)

Prof. Dr. ALICJA SKIRGIELLO (emeritus) (macrofungi, vascular plants)

Dr. HANNA SZYMAŃSKA (algae - *Chlorophyta*)

Dr. JANINA ZIELIŃSKA (lichens)

RESEARCH ● taxonomy and chorology of cryptogams, mainly fungi

LOAN ● to recognized botanical institutions

EXCHANGE ● *available* - plants of all groups, chiefly from Poland;
wanted - plants of all groups, preferably from Asia

CUR PROCED ● specimens are mounted on herbarium sheets and stored in taxonomical (fungi according Ainsworth's system; vascular plants according Engler's system) or alphabetical order in cardboard boxes in holders. Sheet size: 28.5 x 45.5 cm

BOT GARDEN ● Botanical Garden of the Warsaw University is a separate administrative unit

LITERATURE ● KORNAŚ J., ZURZYCKI J. 1959. Botany in Poland. 35 pp. Jagiellonian University and the Polish Academy of Sciences (Cracow Centre). Cracow.

WARSZAWA ● *Museum of the Earth, Division of Palaeobotany, Polish Academy of Sciences (Muzeum Ziemi, Dział Palaeobotaniki, Polska Akademia Nauk)* - WAME

ADDRESS ● Al. Na Skarpie 20/26 i 27, 00-488 Warszawa; tel. 29-80-61

FOUNDATION ● institution - 1948; herbarium - 1948

SPECIMENS ● total 6.792 [leaves of vascular plants - about 2.000 samples; carpological collection - 2.120 samples; collection of epithelia - about 1.000 slides; collection of pollen and spores - 1.672 slides]

GEOGR AREA ● comparative collection of plants from various regions

DIRECTOR ● Prof. Dr. KRZYSZTOF JAKUBOWSKI

HEAD & CUR ● Dr. ANNA HUMMEL (palaeobotany)

LOAN ● not available at present

EXCHANGE ● not carried

WARSAWA ● *Department of Plant Pathology, Faculty of Horticulture, Warsaw Agricultural University (Katedra Fitoopatologii, Wydział Ogrodniczy SGGW) – WAUF*

ADDRESS ● ul. Nowoursynowska 166, 02-766 Warszawa; tel. 43-90-41, ext. 11-12, 11-15

FOUNDATION ● institution – ?; herbarium – ?

SPECIMENS ● about 5.000 (pathogenic microfungi)

GEOGR AREA ● collections from Europe, Asia and N America (chiefly *Peronosporales*, *Uredinales* and *Ustilaginales*)

IMPORT COLL ● A. WRÓBLEWSKI, W. SIEMASZKO, J. KOCHMAN, T. MAJEWSKI

DIRECTOR ● Prof. Dr. ZBIGNIEW BORECKI

STAFF ● Dr. RYSZARD DZIĘCIOŁOWSKI
Prof. Dr. JÓZEF KOCHMAN (emeritus)
Dr. JOANNA MARCINKOWSKA
Doc. Dr. BOGDAN NOWICKI
Dr. CZESŁAW ZAMORSKI

RESEARCH ● diseases of cultivated and ornamental plants

LOAN ● to recognized botanical institutions

EXCHANGE ● *available – Mycotheca Polonica; wanted – pathogenic microfungi from Europe, Asia and N America*

CUR PROCED ● specimens are stored in envelopes in cardboard boxes in wooden cabinets

WROCLAW ● *Department of Botany and Plant Physiology, Academy of Agriculture (Katedra Botaniki i Fizjologii Roślin, Akademia Rolnicza) – WRAB*

ADDRESS ● ul. Cybulskiego 32, 50-205 Wrocław; tel. 21-25-64

FOUNDATION ● institution – 1945; herbarium – 1945

SPECIMENS ● total 12.100 [vascular plants – 10.000; bryophytes – 1.000; lichens – 1.000; algae – 100]

GEOGR AREA ● local collection, chiefly from the Lower Silesia and the Sudetes, bryophytes and vascular plants from peat bogs of Poland

IMPORT COLL ● type material of *Ducellieria corcontica* Mat. (alga)

HEAD ● Prof. Dr. JERZY FABISZEWSKI (plant ecology, lichens)

CURATOR ● Dr. BRONISŁAW WOJTUŃ (plant ecology, *Sphagnum*)

STAFF ● Dr. JAN MATUŁA (algae)
Dr. JERZY ZABAWSKI (fungi, myxomycetes)

RESEARCH ● plant physiology, ecology, floristics

LOAN ● to recognized institutions only (on the territory of Poland)

EXCHANGE ● *available* and *wanted* – species of genus *Sphagnum*

CUR PROCED ● specimens are filed on herbarium sheets and stored in cardboard boxes in holders in alphabetical order. Sheet size: 26 x 42 cm

REMARKS ● there are two separate collections in the herbarium: J. FABISZEWSKI's collection of lichens and vascular plants from eastern Canada and seeds of *Carex* species (about 2.000 samples) curated by Doc. Dr. ADAM PAŁCZYŃSKI

WROCLAW ● *Department of Phytopathology, Academy of Agriculture (Katedra Fitopatologii, Akademia Rolnicza) – WRAF*

ADDRESS ● ul. Cybulskiego 32, 50-205 Wrocław; tel. 22-97-21

FOUNDATION ● institution – 1946; herbarium – 1956

SPECIMENS ● over 2.000 (microfungi);

GEOGR AREA ● microfungi of Poland

HEAD & CUR ● Prof. Dr. WANDA TRUSZKOWSKA (phytopathology, mycology – *Pyrenomyces*)

RESEARCH ● taxonomy and chorology of *Pyrenomyces* and *Deuteromyces* in Poland

LOAN ● to recognized botanical institutions

- WROCLAW** ● *Museum of Natural History, University of Wrocław (Muzeum Przyrodnicze, Uniwersytet Wrocławski) – WRSŁ*
- ADDRESS** ● ul. H. Sienkiewicza 21, 50-335 Wrocław; tel. 250-41
- FOUNDATION** ● institution - ?; herbarium - 1821
- SPECIMENS** ● total 400.000 [vascular plants - 350.000; bryophytes, lichens, fungi and myxomycetes altogether - 50.000]
- GEOGR AREA** ● worldwide, all systematic groups
- IMPORT COLL** ● P. ASCHERSON, C.G. BAENITZ, J. BORNMÜLLER, H. ENGLER, H. HANDEL-MAZZETTI, J. M. HILDERBRANDT, F. K. KARO, A. KRAWIEC, H. KRZEMIENIEWSKA, herbarium K. A. G. LAUTERBACH (50.000 specimens), F. KERN, K. G. LIMPRICHT, J. MILDE, F. PAX, G. L. RABENHORST, B. SCHRÖDER, J. SCHRÖTER, T. SCHUBE, P. SYDOW, R. UECHTRITZ, H. WINKLER
- DIRECTOR** ● Prof. Dr. ANDRZEJ WIKTOR (malacology)
- HEAD** ● Doc. Dr. JERZY HRYNKIEWICZ (dendrology)
- CURATOR** ● Dr. WANDA STOJANOWSKA (myxomycetes)
- STAFF** ● M. Sc. EDWARD KOZIOŁ (algae)
- RESEARCH** ● flora of Silesia
- LOAN** ● to recognized botanical institutions
- EXCHANGE** ● *available - Flora Silesiaca Ezsiccata; wanted - all systematic groups from various regions of the world*
- P & S WORKS** ● *Flora Silesiaca Ezsiccata; Katalog zbiorów Zielnika Muzeum Przyrodniczego Uniwersytetu Wrocławskiego; Acta Universitatis Wratislaviensis, Prace Botaniczne*
- CUR PROCED** ● specimens are mounted on herbarium sheets and stored in cardboard boxes in taxonomical order (Engler's system). Sheet size: 24 x 39 cm (old Silesian herbarium) and 26 x 42.5 cm (the rest)
- BOT GARDEN** ● Botanical Garden of Wrocław University, ul. Sienkiewicza 23. The garden is separate administrative unit
- REMARKS** ● excluding above mentioned, there are stored two separated collections: 1 - Lower Silesian myxomycetes

(W. STOJANOWSKA); 2 – collection of timber (wood) samples – 1.000. Moreover there is also historical SYLWIUSZ BOCCONE herbarium (XVII century)

- LITERATURE ● BERDOWSKI W., WILCZYŃSKA W. 1976. Katalog zbiorów Zielnika Instytutu Botanicznego Uniwersytetu Wrocławskiego 6. *Bryophyta, Część 1* (Catalogus plantarum, quae in Herbario Instituti Botanici Universitati Wratislaviensis asservantur 6. *Bryophyta, Pars 1*). In: *Katalog zbiorów Zielnika Instytutu Botanicznego Uniwersytetu Wrocławskiego*, pp. 77–194. Uniwersytet Wrocławski, Wrocław.
- BERDOWSKI W., WILCZYŃSKA W. 1981. Katalog zbiorów Zielnika Instytutu Botanicznego Uniwersytetu Wrocławskiego 8. *Bryophyta, Część 2* (Catalogus plantarum, quae in Herbario Instituti Botanici Universitati Wratislaviensis asservantur 8. *Bryophyta, Pars 2*.) In: *Katalog zbiorów Zielnika Instytutu Botanicznego Uniwersytetu Wrocławskiego*, pp. 3–80. Uniwersytet Wrocławski, Wrocław.
- KORNAŚ J., ZURZYCKI J. 1959. Botany in Poland. 35 pp. Jagiellonian University and the Polish Academy of Sciences (Cracow Centre). Cracow.
- ROSTAŃSKI K. 1963. Historia Zielnika Instytutu Botanicznego Uniwersytetu Wrocławskiego. *Acta Universitatis Wratislaviensis* 14. *Prace botaniczne* 1: 283–304.
- ROSTAŃSKI K. 1971. Katalog zbiorów Zielnika Instytutu Botanicznego Uniwersytetu Wrocławskiego 1 (Catalogus plantarum, quae in Herbario Instituti Botanici Universitati Wratislaviensis asservantur 1.) *Acta Universitatis Wratislaviensis* 134, *Prace botaniczne* 12: 69–110.
- ROSTAŃSKI K., WERETELNIK E. 1973(1972). Catalogus plantarum quae in Herbario Instituti Botanici Universitati Wratislaviensis asservantur 3. Herbarium Lauterbach pars 1 (The Lauterbach's Herbarium part 1). *Acta Universitatis Wratislaviensis*, 171, *Prace botaniczne* 16: 77–90.
- SEAWARD M. R. D. 1981. Lichen Herbarium in the Botanical Institute, University of Wrocław (WRSL). *Lichenologist* 13: 309–310.
- SEAWARD M. R. D. 1982. University of Wrocław Lichen Herbarium. *Nova Hedwigia* 36: 17–31
- STOJANOWSKA W. 1971. Katalog zbiorów Zielnika Instytutu Botanicznego Uniwersytetu Wrocławskiego 2. *Myzophyta* (Catalogus plantarum, quae in Herbario Instituti Botanici Universitati Wratislaviensis asservantur 2. *Myzophyta*). *Acta Universitatis Wratislaviensis*, 134, *Prace botaniczne* 12: 111–126

- STOJANOWSKA W. 1973. Katalog zbiorów Zielnika Instytutu Botanicznego Uniwersytetu Wrocławskiego 4. *Euglenophyta, Pyrrophyta, Chrysophyta* (Catalogus plantarum, quae in Herbario Instituti Botanici Universitati Wratislaviensis asservantur 4. *Euglenophyta, Pyrrophyta, Chrysophyta*). *Acta Universitatis Wratislaviensis*, 198, *Prace botaniczne* 17: 89–113.
- STOJANOWSKA W. 1976. Katalog zbiorów Zielnika Instytutu Botanicznego Uniwersytetu Wrocławskiego 5. *Chlorophyta, Charophyta* (Catalogus plantarum, quae in Herbario Instituti Botanici Universitati Wratislaviensis asservantur 5. *Chlorophyta, Charophyta*). pp. 5–75. Uniwersytet Wrocławski, Wrocław.
- STOJANOWSKA W. 1986. Katalog zbiorów Zielnika Instytutu Botanicznego Uniwersytetu Wrocławskiego 10. Fungi, Część 1 (Catalogus plantarum, quae in Herbario Musei Historiae Naturalis Universitatis Wratislaviensis asservantur 10. Fungi, Pars 1). In: *Katalog zbiorów zielnika Muzeum Przyrodniczego Uniwersytetu Wrocławskiego*, pp. 3–181. Wydawnictwo Uniwersytetu Wrocławskiego, Wrocław.
- STOJANOWSKA W. 1988. Katalog zbiorów Zielnika Instytutu Botanicznego Uniwersytetu Wrocławskiego 11. Fungi, Część 2 (Catalogus plantarum, quae in Herbario Musei Historiae Naturalis Universitatis Wratislaviensis asservantur 11. Fungi, Pars 2). In: *Katalog zbiorów zielnika Muzeum Przyrodniczego Uniwersytetu Wrocławskiego*, pp. 3–216. Wydawnictwo Uniwersytetu Wrocławskiego, Wrocław.
- STOJANOWSKA W., KOZIOL E. 1981. Katalog zbiorów Zielnika Instytutu Botanicznego Uniwersytetu Wrocławskiego 9. *Phaeophyta, Rhodophyta* (Catalogus plantarum, quae in Herbario Instituti Botanici Universitati Wratislaviensis asservantur 9. *Phaeophyta, Rhodophyta*). In: *Katalog zbiorów Zielnika Instytutu Botanicznego Uniwersytetu Wrocławskiego*, pp. 81–147. Uniwersytet Wrocławski, Wrocław.
- WERETELNIK E. 1976. Katalog zbiorów Zielnika Instytutu Botanicznego Uniwersytetu Wrocławskiego 7. Herbarium Lauterbach pars 2. In: *Katalog zbiorów Zielnika Instytutu Botanicznego Uniwersytetu Wrocławskiego*, pp. 195–217. Uniwersytet Wrocławski, Wrocław.
- ZAGÓRSKA-MAREK B., RICHTER H. G. 1990. The old wood collection at Wrocław (Poland). *IAWA Bulletin n. s.* 11(1): 102–104

ZAKOPANE ● *Tytus Chalubiński Tatra Museum (Muzeum Tatrzańskie im. Tytusa Chalubińskiego) – ZAMU*

- ADDRESS ● ul. Krupówki 10, 34-500 Zakopane; tel. 52-05
- FOUNDATION ● institution - 1888; herbarium - about 1890
- SPECIMENS ● total 7.367 [vascular plants - 5.800; bryophytes - 679; lichens - 151; fungi and myxomycetes - 112, algae - 25 and 600 slides of mosses]
- GEOGR AREA ● local collection; plants from the Tatra Mts and Subtatic region - all taxonomical groups
- IMPORT COLL ● mosses of T. CHALUBIŃSKI
- DIRECTOR ● M. Sc. TADEUSZ SZCZEPANEK
- CURATOR ● M. Sc. MAŁGORZATA GAŚSIENICA-SZOSTAK
- LOAN ● not available at present
- EXCHANGE ● not carried
- P & S WORKS ● *Rocznik Podhalański*
- CUR PROCED ● Specimens are filed on herbarium sheets or in jackets in wooden cabinets in taxonomical order. Sheet size: 30.5 x 43 cm, 31.5 x 47 cm

ZAKOPANE ● *Tatra Field Station, Department of Nature Protection and Natural Resources, Polish Academy of Sciences (Tatrzańska Stacja Terenowa, Zakład Ochrony Przyrody i Zasobów Naturalnych, Polska Akademia Nauk) - ZTS*

- ADDRESS ● Antałówka 7, 34-501 Zakopane; tel. 26-51
- FOUNDATION ● institution - 1951; herbarium - 1951
- SPECIMENS ● total 11.080 [vascular plants - 8.500; bryophytes - 1.450; fungi - 130]
- GEOGR AREA ● regional collection, mainly vascular plants of the Tatra Mts and Subtatic region
- HEAD & CUR ● Dr. HALINA PIĘKOŚ-MIRKOWA (variability, distribution and ecology of rare, endangered and endemic species in the West Carpathians; biotaxonomy and distribution of pteridophytes - *Dryopteris* in the Holarctic, *Cystopteris* and *Polystichum*; Atlas of the distribution of vascular plants in the Tatra Mts)
- STAFF ● M. Sc. HANNA KUCIEL (ecology of *Crocus*)
- RESEARCH ● flora and vegetation of the Tatra Mts and Subtatic

Region - taxonomy, distribution and ecology. Rare, endangered and endemic species of the Tatra region

LOAN ● to recognized botanical institutions and private individuals

EXCHANGE ● *available* - vascular plants of the Carpathians; *wanted* - vascular plants of the mountains of Europe

P & S WORKS ● *Index Seminum*

BOT GARDEN ● *M. Raciborski Mountain Botanical Garden* in Zakopane - 0.2 ha. Specialized in *ex situ* protection of rare, endemic and endangered species of the Tatra Mts and Podhale Region. Contains over 600 Tatra's vascular plant species. Open for public

REMARKS ● additional collections of seeds: over 1.000 species from the Tatra Mts and Subtatric region.

PRIVATE HERBARIA

GRZEGORZEK PIOTR (*hb. Grz.*)

ADDRESS ● *Museum in Chrzanów (Muzeum w Chrzanowie)*,
ul. A. Mickiewicza 13, 32-500 Chrzanów; tel.
51-73

SPECIMENS ● 3.300 (vascular plants 300, macrofungi 3.000)

GEOGR AREA ● local collection — chiefly fungi from the Silesian
highland

LOAN ● not available at present

JASIEWICZ ADAM (*hb. Jas.*)

SPECIMENS ● about 40.000 (vascular plants)

GEOGR AREA ● plants from many European countries, Mexico,
Turkey, and China

LOAN ● to recognized botanical institutions

REMARKS ● stored in KRAM

KORNAŚ JAN, MEDWECKA-KORNAŚ ANNA (*hb. Korn.*)

SPECIMENS ● about 40.000 (vascular plants)

GEOGR AREA ● plants from Poland (rich collection from the
Carpathian Mts), many European countries, the
Caucasus, North America and tropical Africa
(rich collection of pteridophytes)

LOAN ● to recognized botanical institutions

REMARKS ● stored in KRA

MAŁAŁSKI JÓZEF (hb. Mał.)

SPECIMENS ● about 40.000 (vascular plants)

GEOGR AREA ● plants of Europe (rich collection from E Europe and Silesia) and N America

LOAN ● to recognized botanical institutions

REMARKS ● stored in the Laboratory of the Polish Flora Iconography of the Institute of Botany, Polish Academy of Sciences, ul. Podwale 75, 50-449 Wrocław

MIREK ZBIGNIEW, PIĘKOŚ-MIRKOWA HALINA (hb. Mir.)

SPECIMENS ● about 30.000 (vascular plants)

GEOGR AREA ● flora of Polish and European mountains; rich collection of grasses and pteridophytes

LOAN ● to recognized botanical institutions and private individuals

REMARKS ● stored in KRAM

RADWAŃSKA-PARYSKA ZOFIA (hb. Par.)

SPECIMENS ● 3.500 (vascular plants)

GEOGR AREA ● local collection - the Tatra Mts and Podhale region

LOAN ● not available at present

REMARKS ● stored in private house: Koziniec 1, 34-501 Zakopane

SENDEK ANDRZEJ (hb. Sen.)

SPECIMENS ● 3.500 (vascular plants)

GEOGR AREA ● plants from Silesia

LOAN ● only to Polish institutions

REMARKS ● stored in: Faculty of Biological Sciences, Physical Training Academy; ul. Mikołowska 72a, 40-065 Katowice; tel. 51-70-70

SULMA TADEUSZ (hb. Sul.)

SPECIMENS ● several thousands.

GEOGR AREA ● lichens from Poland and adjacent territories

LOAN ● not available at present

REMARKS ● stored in GDMA

ŻUKOWSKI WALDEMAR (hb. Żuk.)

SPECIMENS ● about 10.000 (vascular plants)

GEOGR AREA ● vascular plants from the Drawsko region

LOAN ● to recognized botanical institutions

REMARKS ● stored in POZ

Index to Persons

Key to acronyms see Table 2

- Andrzejewski H. - LOD
Balcerkiewicz S. - POZM
Batko A. - WA
Bednarek-Ochyra H. - KRAM
Bernacki L. - KTU
Bialobrzeska M. - KRAM
Biderman A. - OPN
Bielczyk U. - KRAM
Bloch M. - LBL
Błaszowski J. - SZPA
Bobowicz M. - POZW
Bohdanowicz A. - SMOK
Boińska U. - TRN
Boiński M. - TRN
Bondyra A. - POZM
Boratyńska K. - KOR
Boratyński A. - KOR
Borecki Z. - WAUF
Borowska A. - WA
Browicz K. - KOR
Bróz E. - KTC
Brylska B. - POZG
Bugala W. - KOR
Bujakiewicz A. - POZM
Buliński M. - GDMA
Bystrek J. - LBL
Ceynowa-Giełdoń M. - TRN
Chlebicki A. - KRAM
Chmiel J. - POZ
Chmiel M.A. - LBLM
Ciecierska H. - OLTC
Cieśliński S. - KTC
Czyżewska K. - LOD
Ćwikliński E. - WSRP
Ćwikowa A. - KRFB
Danielewicz W. - POZNF
Dąbrowska B. - BYDG
Domański S. - HMIPC
Drozdowicz A. - KRA
Dubiel E. - KRA
Dutka H. - MGS
Dynowska M. - OLTC
Dzięciolowski R. - WAUF
Dzwonko Z. - KRA
Fabiszewski J. - WRAB
Fagasiewicz L. - LOD
Faliński J.B. - BSG
Fijałkowski D. - LBL
Fijałkowski E. - KINM
Filipiak E. - LOD
Flisińska Z. - LBLM
Fałtynowicz W. - UGDA
Frey L. - KRAM
Gaśienica-Szostak M. - ZAMU
Glanc K. - POZW
Głazek T. - SZUB
Głowacki Z. - WSRP
Gostyńska-Jakuszczyńska M.
KRAM Górczyńska K. - LBL
Grzebyk D. - RZS
Grzegorzek P. - CHRZ
Gugnacka-Fiedor W. - TRN
Gumińska B. - KRA
Guśpiel A. - KRAM
Guzikowa M. - KRAM
Hantz J. - KOR
Harmata K. - KRA
Herbich J. - UGDA

Herbichowa M. – UGDA
 Hereźniak J. – LOD
 Hordowiak J. – BDPA
 Hrynkiewicz J. – WRSL
 Hummel A. – WAME
 Izydorek J. – SLTC
 Jackowiak B. – POZ
 Jackowska J. – IUNG
 Jakubowska-Gabara J. – LOD
 Jakubowski K. – WAME
 Jasiewicz A. – KRAM
 Jasnowski M. – SZCZ
 Jelinowski T. – GDMA
 Jędrzejko K. – SOSN
 Józefaciuk A. – IUNG
 Kapuściński R. – SKPN
 Karczmarz K. – LBL
 Kępczyński K. – TRN
 Kiszka J. – KRAP
 Klama H. – SOSN
 Klimko M. – POZ
 Kochman J. – WAUF
 Kołodziejczyk Z. – POZG
 Komorowska H. – KRAM
 Kopij M. – WA
 Korczyński M. – BYDG
 Kornaś J. – KRA
 Kotańska M. – KRA
 Kowalewski J. – MGS
 Kowalski T. – HMIPC
 Kozik R. – KRAP
 Kozioł E. – WRSL
 Krasicka E. – BYDG
 Krawczyk E. – KTU
 Krawczyk I. – OLTC
 Król S. – POZNB
 Krupa J. – KRAP
 Krzaczek W. – LBL
 Krzakowa M. – POZW
 Kucharski L. – LOD
 Kuciel H. – ZTS
 Kurowski J.K. – LOD
 Kuświk H. – POZNB
 Kutrzeba M. – WRAB
 Lamperska E. – OLS
 Lankosz-Mróż M. – KRA
 Laro P. – OLTC
 Latała M. – UGDA
 Latowski K. – POZ
 Lisiewska M. – POZM
 Lisowski S. – POZG
 Loster S. – KRA
 Lawrynowicz M. – LOD
 Luczycka-Popiel A. – LBL
 Luszczynska B. – KTC
 Luszczynski J. – KTC
 Maciejczak B. – KTC
 Madej T. – SZPA
 Majewski T. – KRAM
 Marcinkowska J. – WAUF
 Markowski R. – UGDA
 Matuła J. – WRAB
 Matyjaszkiewicz M. – KRA
 Mazaraki I. – CHRZ
 Mazur M. – KTC
 Mądalski J. – KRAM
 Medwecka-Kornaś A. – KRA
 Melosik J. – POZG
 Mickiewicz J. – WA
 Mielcarski C. – POZNB
 Mierzeńska M. – KRAM
 Mirek Z. – KRAM
 Misiewicz J. – SLTC
 Mizianty M. – KRAM
 Motyka J. – CHRZ
 Motyka-Zgłowicka M. – LBL
 Mrozińska T. – KRAM
 Mulencko W. – LBLM
 Musiał L. – KRAM
 Mysielski C. – POZNB

Myga M. - OPOL
 Nawrocki S. - IUNG
 Nowak J. - KRAM
 Nowak L. - KRAM
 Nowicki B. - WAUF
 Oborny A. - KINM
 Ochyra R. - KRAM
 Odrzykowski J. - POZW
 Olaczek R. - LOD
 Olech M. - KRA
 Olesiński L. - OLSZ
 Olkowski M. - OLSZ
 Pacyna A. - KRA
 Paczuska B. - BYDG
 Pakiet M. - WALM
 Pancer-Kotejowa E. - KRFB
 Partyka J. - OPN
 Pelc S. - KRAP
 Piasecki J. - BYDG
 Picińska J. - UGDA
 Piekielko-Zemanek A. - KRA
 Piękoś-Mirkowa H. - ZTS
 Pięta J. - IUNG
 Piotrowska H. - UGDA
 Piórecki J. - BDPA
 Polakowski B. - OLS
 Popek R. - KRAP
 Prus-Głowacki W. - POZW
 Przemyski A. - KTC
 Przybyłowska-Lange W. - KRAM
 Puzskar L. - IUNG
 Radziwinowicz W. - OMWM
 Rajba M. - KRA
 Rębowski B. - IUNG
 Romaszewska-Sałata J. - LBLM
 Rostański A. - KTU
 Rostański K. - KTU
 Różański W. - KRFB
 Rudnicka-Jeziarska W. - WA
 Rusińska H. - POZG
 Sagan E. - WALM
 Sałata B. - LBLM
 Samosiej L. - LOD
 Siciński J. - LOD
 Siemińska J. - KRAM
 Sikorski J. - OMWM
 Skirgiello A. - WA
 Skrzypczak L. - PBMA
 Sokołowski A. - BIL
 Sokół S. - KTU
 Sowa R. - LOD
 Spanidis A. - BYDG
 Stachowiak B. - UGDA
 Starmach K. - KRAM
 Stasiak H. - IUNG
 Stasiak J. - UGDA
 Staszkievicz J. - KRAM
 Stefanek W. - POZNB
 Stengl-Rejthar A. - KRA
 Sterna W. - POZNB
 Stojanowska W. - WRSL
 Stuchlik B. - KRAP
 Stuchlik L. - KRAM
 Stypiński P. - OLTC
 Sulma T. - GDMA
 Szczepanek T. - ZAMU
 Szlachetko D. - UGDA
 Szmajda P. - POZG
 Szmaja J. - UGDA
 Szmaja K. - GDMA
 Szwagrzyk J. - KRFB
 Szweykowski J. - POZW
 Szymańska H. - WA
 Śpiewakowski R. - BYDG
 Święs F. - LBL
 Taranowska B. - LBL
 Toborowicz K. - KTC
 Tokarska-Guzik B. - KTU
 Tokarz H. - GDMA
 Towpasz K. - KRA

Treska A. - KTC
Truchanowicz J. - KRAM
Truszkowska W. - WRAF
Trzcńska-Tacik H. - KRA
Tumidajowicz D. - KRA
Tumilowicz J. - ROGA
Turnau K. - KRA
Urbański L. - POZW
Urbański P. - POZNB
Warcholińska A.U. - LOD
Wawer M. - LBL
Wielicka M. - BYDG
Więckowska Z. - SMOK
Wiktor A. - WRSL
Witosławski P. - LOD
Wnuk Z. - RZS
Wojewoda W. - KRAM
Wojtuń B. - WRAB

Wolek A. - IUNG
Wołowski K. - KRAM
Wójcicki J. - KRAM
Zabawski J. - WRAB
Zajac A. - KRA
Zajac M. - KRA
Zajac U. - KRA
Zamorski C. - WAUF
Zarzycki K. - KRAM
Zastawniak E. - KRAM
Zdebska D. - KRA
Zemanek B. - KRA
Zielińska J. - WA
Zieliński J. - KOR
Zydlik S. - WALM
Żarnowiec J. - SOSN
Żukowski W. - POZ

**Index to 'important collections',
names of collectors, and geographical regions**

Key to acronyms see Table 2

- | | |
|------------------------------|------------------------------|
| Africa - KRA, KRAM, POZG | Janczewski E. - KRAM |
| Antarctica - KRA, KRAM | Japan - TRN |
| Ascherson P. - WRSL | Jasiewiczowa M. - KRAM |
| Asia - KRAM, KOR | Jasiewicz A. - KRAM |
| Baenitz C.G. - WRSL | Java - KRA |
| Balkan Peninsula - KRAM, POZ | Jelski K. - KRA |
| Bauer - KRA | Karo F. - WA, WRSL |
| Berdau F. - KRA | Kern F. - WRSL |
| Bielczyk U. - KRAM | Kiszka J. - KRAM, KRAP |
| Błoński F. - WA | Kochman J. - WAUF |
| Boberski W. - KRAM | Koperowa W. - KRAM |
| Bornmüller J. - WRSL | Korea - KRAM |
| Bystrek J. - KRAM | Kornaś J. - KRA |
| Chalubiński T. - WA, ZAMU | Kotula B. - KRAM |
| Crimea - WA | Krawiec A. - WRSL |
| Cuba - KRAM, KTU | Krupa J. - KRAM |
| Czeczott H. - WA | Krupko S. - WA |
| Czyżewska K. - KRAM | Krzemienievska H. - WRSL |
| Domański S. - HMIPC | Kuc M. - KRAM |
| Drescher E. - MGS | Kulesza W. - POZNB |
| Drymmer K. - WA | Lauterbach K.A.G. - WRSL |
| Engler H. - WRSL | Lilienfeld F. - KRAM |
| Europe - KRAM, POZ | Limpricht K.G. - WRSL |
| Fabiszewski J. - WRAB | Lisowski S. - KRAM, POZG |
| Garbowski L. - WA | Lubliner-Mianowska K. - GDMA |
| Glanc K. - KRAM | Lynge B. - KRAM |
| Godzik B. - KRAM | Lapczyński K. - WA |
| Greece - KOR | Lawrynowicz M. - LOD |
| Grodzińska K. - KRAM | Majewski T. - KRAM, WAUF |
| Guinea - POZG | Medwecka-Kornaś A. - KRA |
| Handel-Mazzetti H. - WRSL | Michalak S. - OPOL, POZW |
| Hilderbrandt J.M. - WRSL | Michalski A. - WA |
| Hryniewiecki B. - WA | Milde J. - WRSL |

Mongolia - KRA
 Mongolian Khentei Mts - LBL
 Motyka J. - KRAM, LBL
 Mrozińska T. - KRAM
 Namysłowski B. - KRAM
 North America - POZ
 Nowak J. - KRAM
 Nowiński M. - POZNB
 Ochyra R. - KRAM
 Olech M. - KRA
 Oszast J. - KRAM
 Pacyna A. - KRA
 Paczowski J. - POZ
 Pawłowski B. - KRA, KRAM
 Pocs T. - KRAM
 Podolia - KRAM
 Pokutia - KRAM
 Rabenhorst G.L. - WA, WRSL
 Raciborski M. - KRA
 Rehman A. - KRA, KRAM
 Riener - TRN
 Ritschl - POZ
 Rostański K. - KTU
 Rouppert K. - KRAM
 Scandinavia - LBL
 Schenk - POZ
 Schröder B. - WRSL
 Schröter J. - WRSL
 Schube T. - WRSL
 Siemaszko W. - WAUF
 Srecki K. - POZNB
 South America - KRA
 Spitsbergen - KRA, KRAM
 Starzeński A. - KRA
 Stec-Rouppertowa - KRAM
 Stefanek W. - POZNB
 Steffen H. - OMWM
 Stuchlik L. - KRAM
 Sulma T. - KRAM, LBL
 Sydow P. - WRSL
 Szafer W. - KRAM
 Szafran B. - KRA, KRAM
 Ślodziński A. - KRA, KRAM
 Środoniowa M. - KRAM
 Środoń A. - KRAM
 Świąś F. - LBL
 The Alps - KRAM
 The Carpathians - KRAM, LBL
 Tobolewski Z. - KRAM
 Uechtritz R. - WRSL
 Walter - POZ
 Wasylikowa K. - KRAM
 Wilczyński T. - KRAM
 Winkler H. - WRSL
 Wiśniewski T. - WA
 Wojewoda W. - KRAM
 Wolhynia - KRAM
 Wołoszczak E. - KRAM
 Wróblewski A. - KRAM, WAUF
 Zabłocki J. - KRAM, TRN, WA
 Zabłocki W. - KRAM, WA
 Zair - POZG
 Zapalowicz H. - KRAM
 Zastawniak E. - KRAM
 Zielińska M. - KRAM
 Zimmermann F. - WALM
 Żmuda A. - KRA, KRAM

NOTES

NOTES

Acta Paleobotanica A journal published twice a year now in its 30th volume. It contains research papers concerned with all topics of palaeobotany.

Fragmenta Floristica et Geobotanica A journal published four times a year, established in 1953, now in its 35th volume. It publishes papers of relevance to the taxonomy, phytogeography, phytosociology, anatomy, biosystematics, cytology, ecology, and phytochemistry of all plant groups.

Universitas Jagellonica Acta Scientiarum Litterarumque, Folia Botanica (Zeszyty Naukowe Uniwersytetu Jagiellońskiego, Prace Botaniczne) Published one-several volumes a year, journal now in its 20th volume. It contains articles and monographs in all topics of the botany.

Flora Polonicae Terrarumque Adiacentium Iconographia (Atlas Flory Polskiej i Ziem Ościennych) Series established in 1930 to present full illustrations and descriptions of all plants growing spontaneously and subspontaneously in Poland and adjacent territories, including Lithuania, Byelorussia, the Western Ukraine, and the East Carpathians. Published irregularly in volumes each including a various numbers of parts. Each part is loose-leaf in a folder [In Latin & Polish].

Atlas of the Geographical Distribution of Spore Plants in Poland (Atlas Rozmieszczenia roślin zarodnikowych w Polsce) Established in 1962 to present distribution maps of all groups of spore plants in Poland including algae, fungi, lichens, liverworts, and mosses. For every species there is an account of the distribution and ecology in Poland with notes on extra-Polish distribution in English and Polish and generalized distribution maps in the world, Holarctic, and Europe. Each part is loose-leaf in a folder including ten species. So far maps for 90 species of lichens, 100 species of hepatics, and 50 species of mosses have been published.

Flora of Poland, Vascular Plants of Poland and Adjacent Territories (Flora Polska, Rośliny naczyniowe Polski i Ziem Ościennych) Completed in 14 volumes published in 1919-1980. This flora presents descriptions of all native species and established aliens of vascular plants in Poland and adjacent territories, including Lithuania, Byelorussia, the Western Ukraine, and the East Carpathians, [in Polish].

Flora of Poland, Spore Plants of Poland and Adjacent Territories (Flora Polska, Rośliny Zarodnikowe Polski i Ziem Ościennych) This flora published irregularly since 1957 is designated to present descriptions and illustrations of all species of algae, liverworts, mosses, myxomycetes, fungi and lichens of Poland and adjacent territories. So far one volume of algae, two of mosses, one of hepatics, one of myxomycetes, five of lichens, and eighteen of fungi have been completed, [in Polish].

Field Flora of Fungi (Mała Flora Grzybów) Published irregularly, this compilation is designated to present descriptions and keys for determination of world fungi species. Six volumes have already appeared, [in Polish].

Freshwater Flora of Poland (Flora Ślaskowodna Polski) Published at irregular intervals since 1963, this series is devoted to descriptions and illustrations of all plant groups growing in fresh water in Poland. To date 14 of 18 planned volumes have been published including treatments of hepatics, mosses, and most groups of algae, some of which having two different editions, [in Polish].

Botanical Bibliographies (Bibliografie Botaniczne) Published irregularly, this series was established in 1983 to present a full list of publications dealing with all plant groups by Polish botanists as well as all publications covering territory of Poland by foreign authors. So far bibliography of lichens, fungi, and algae have been compiled.

Detailed catalogue including all publications available from W. Szafer Institute of Botany of the Polish Academy of Sciences & Institute of Botany of the Jagiellonian University will be sent on request. All inquiries regarding subscriptions, purchase and exchange of the above publications should be directed to: The Library, W. Szafer Institute of Botany, Polish Academy of Sciences, Lubicz 46, PL-31-512 Kraków, Poland.