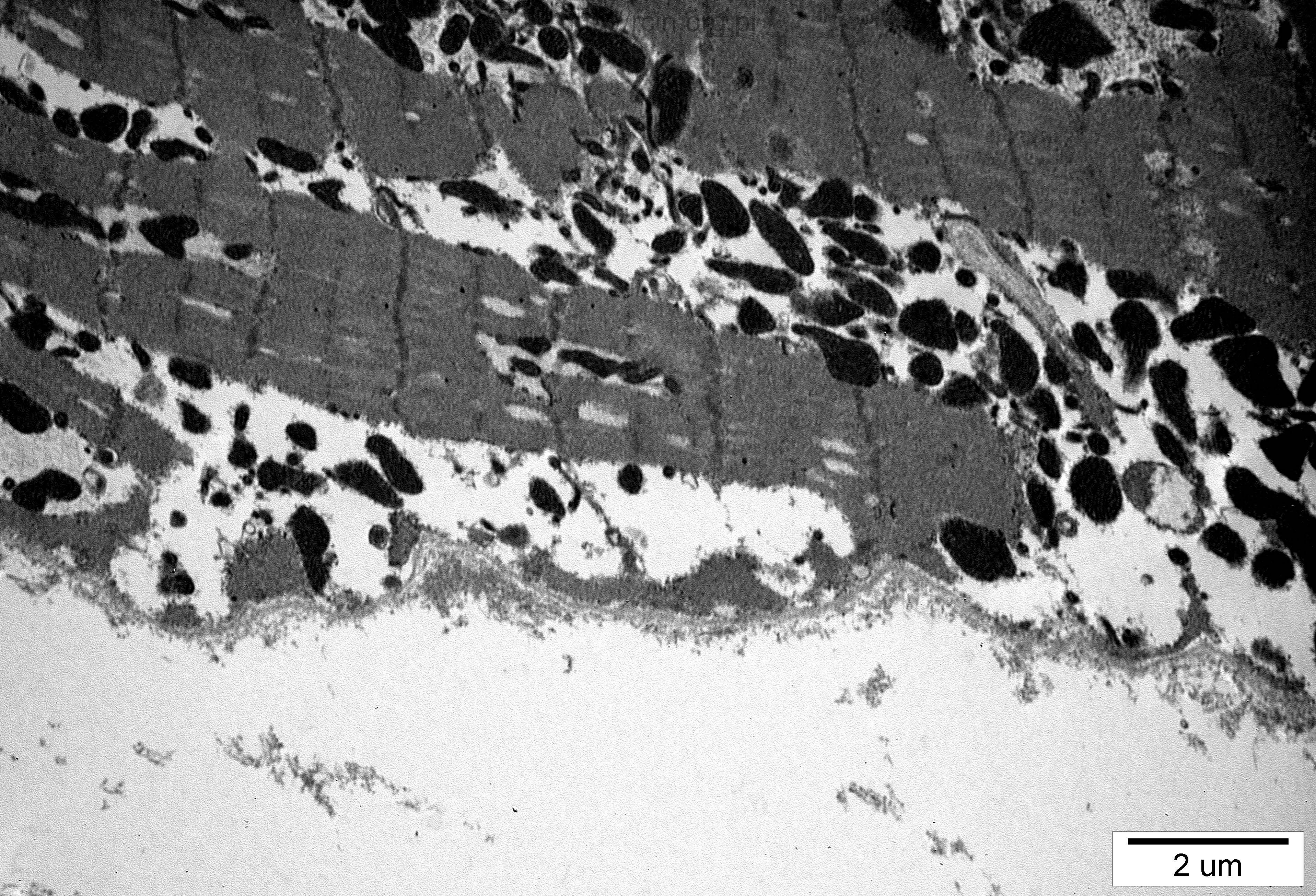
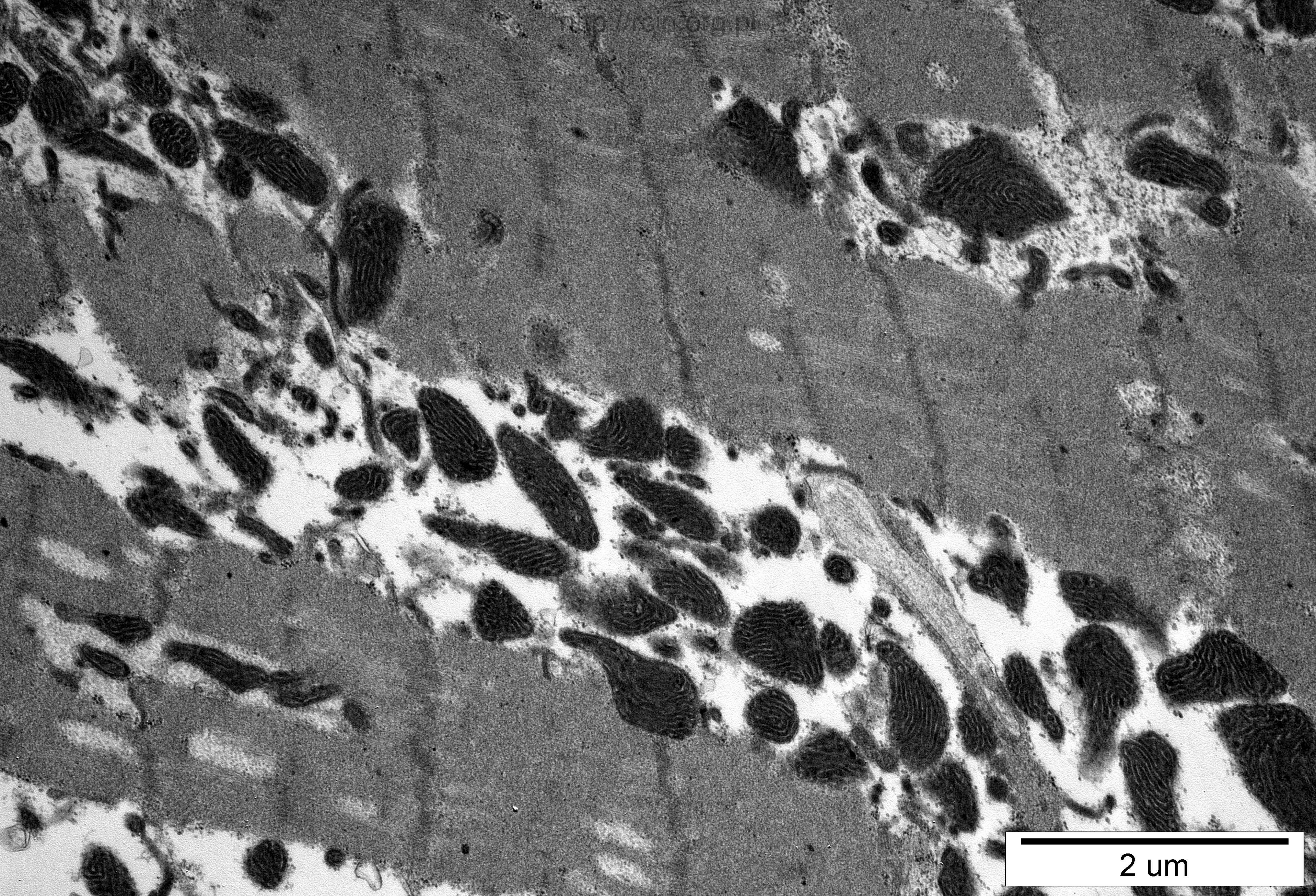


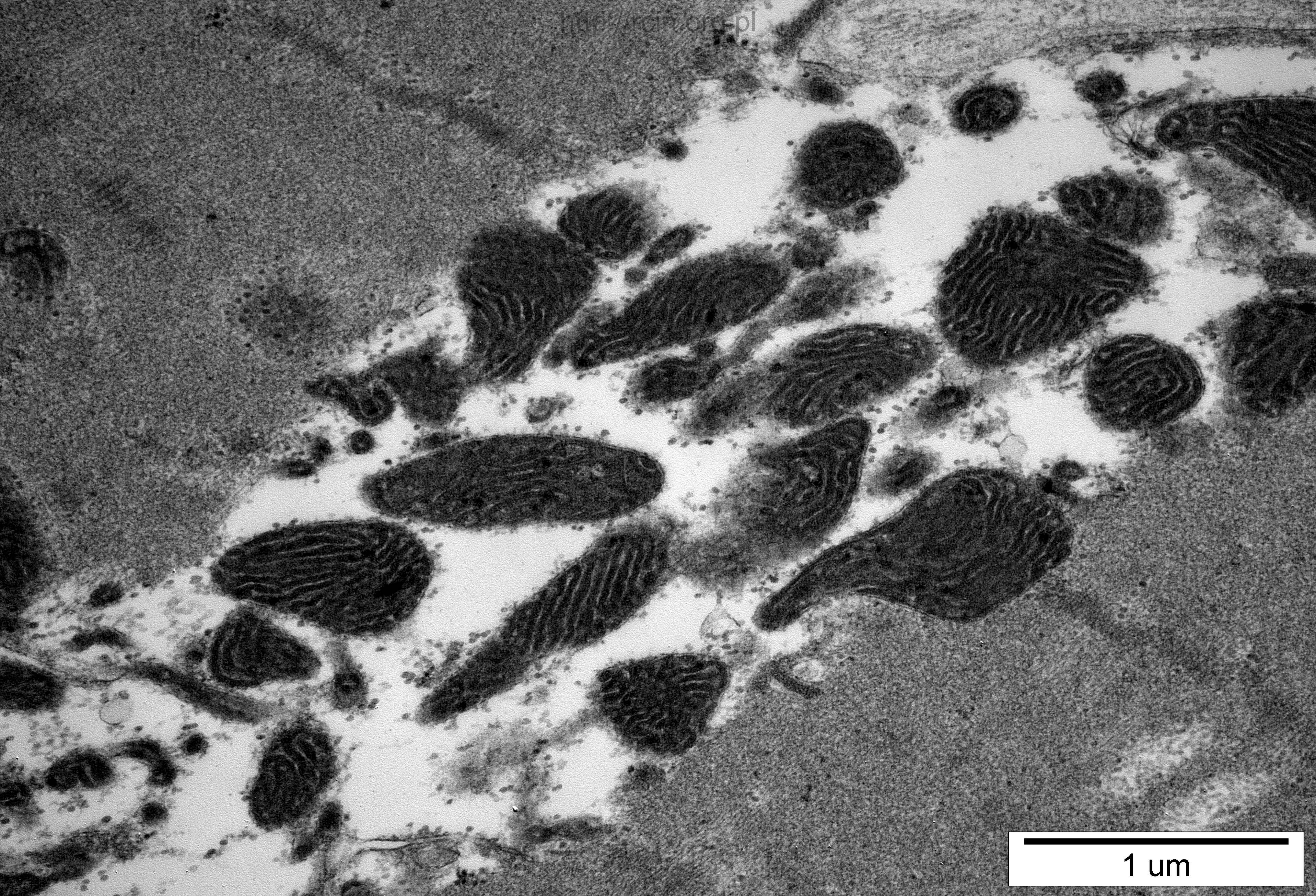
2 um



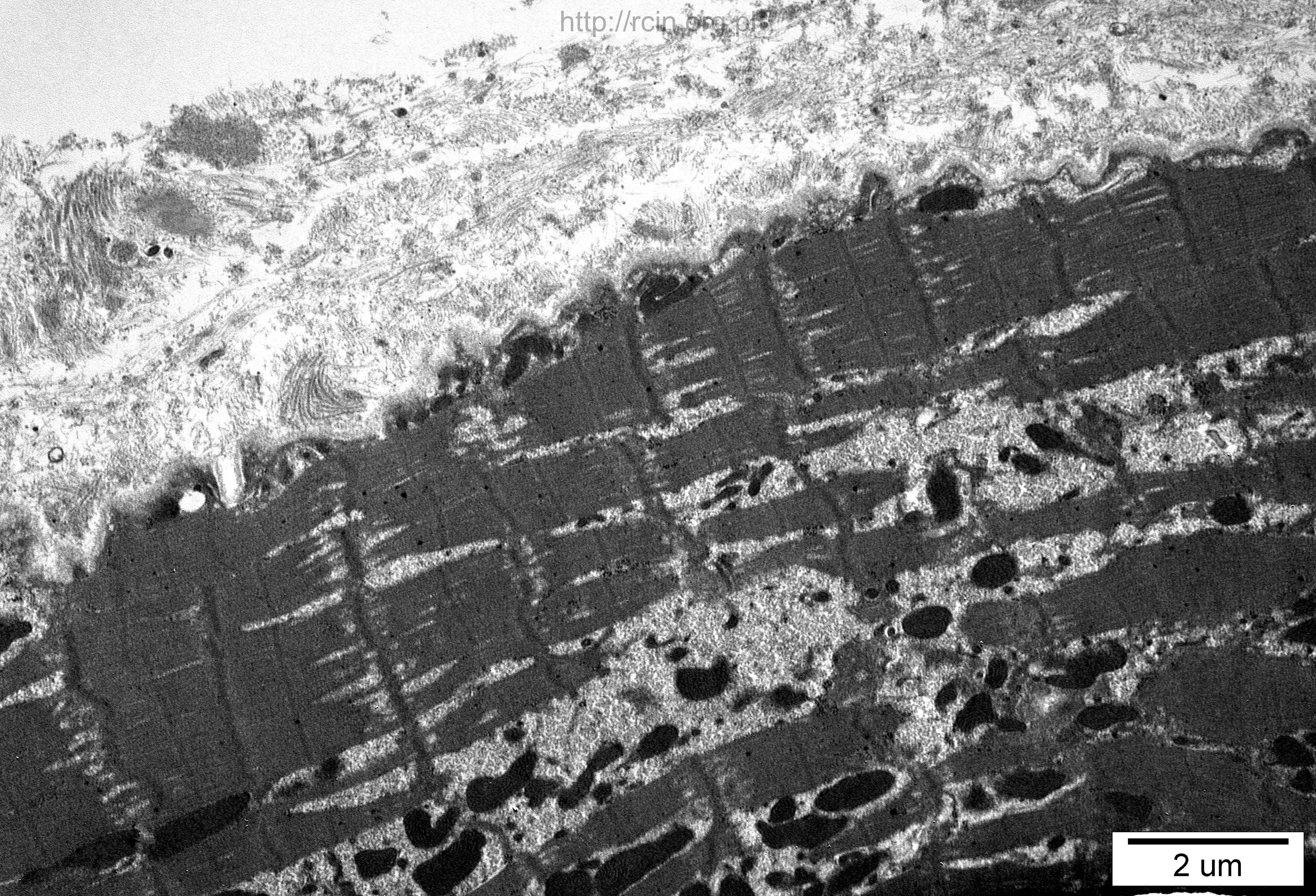
2 μm



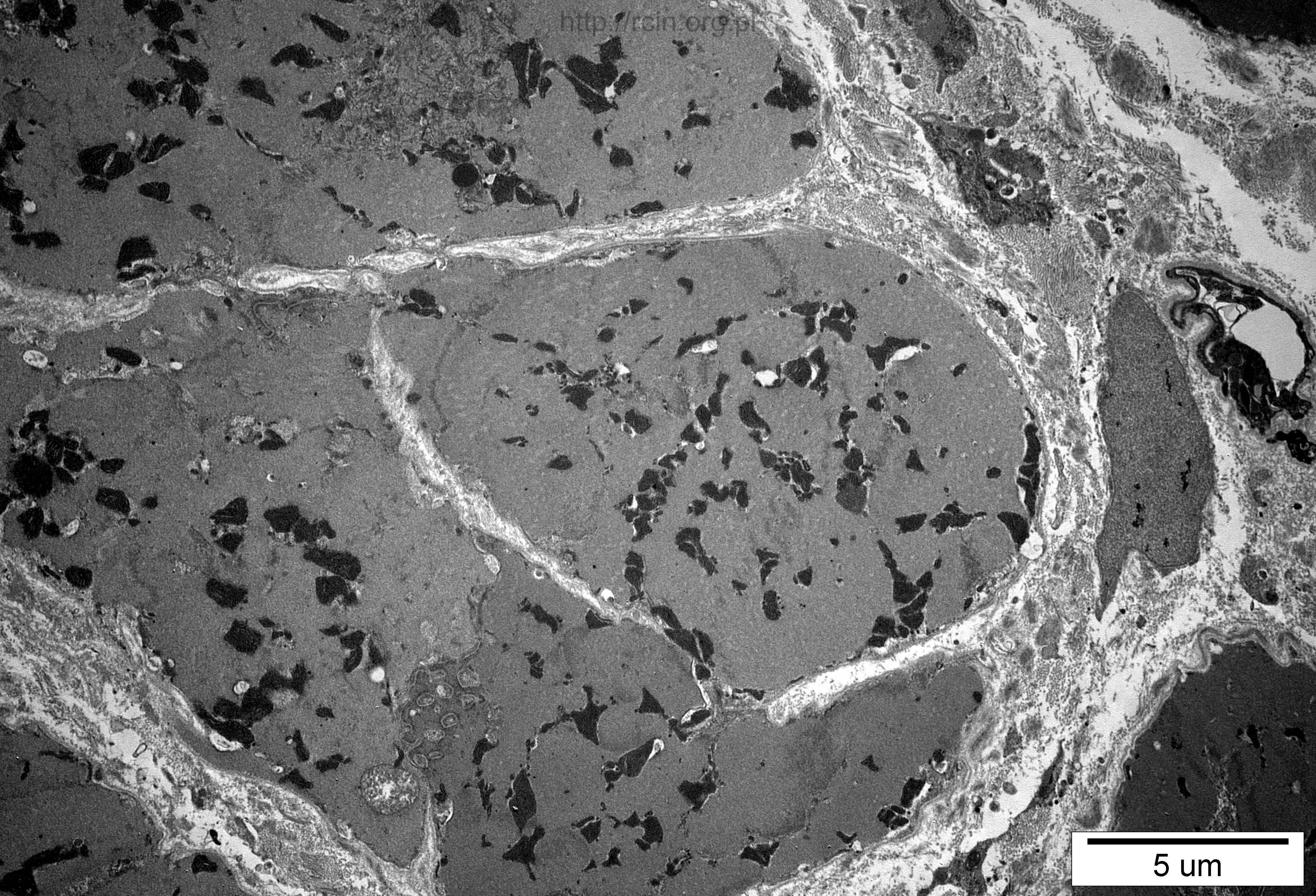
2 um



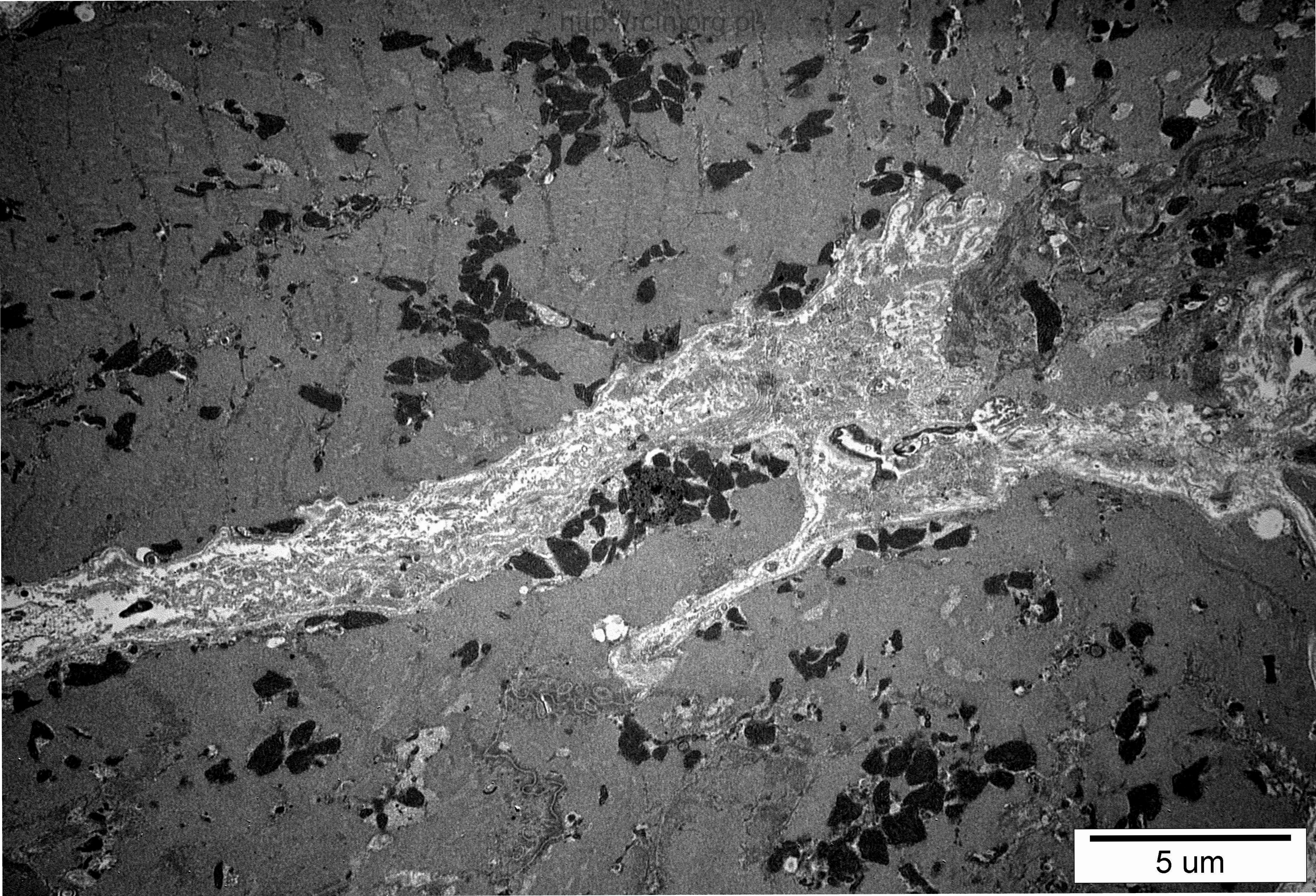
1 μm



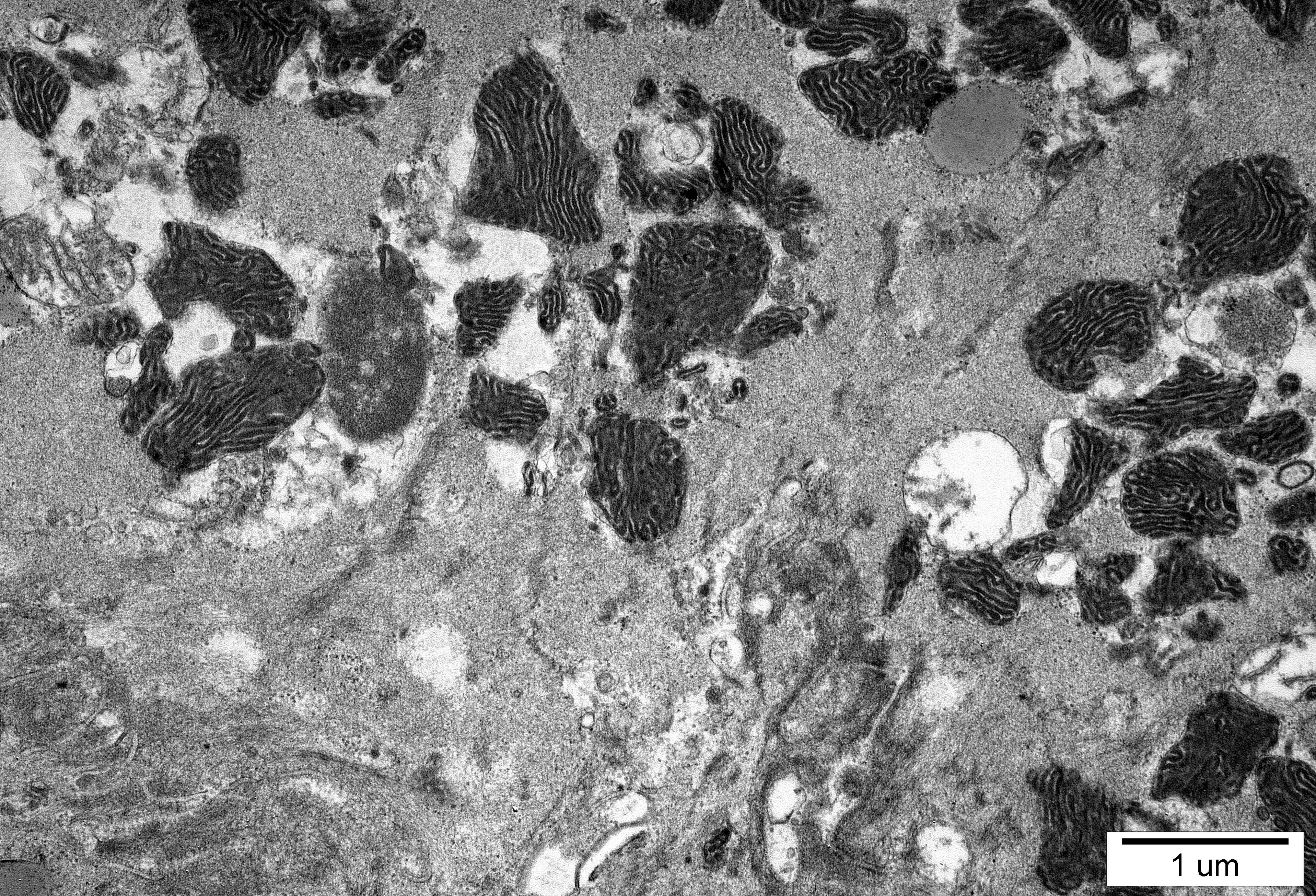
2 um



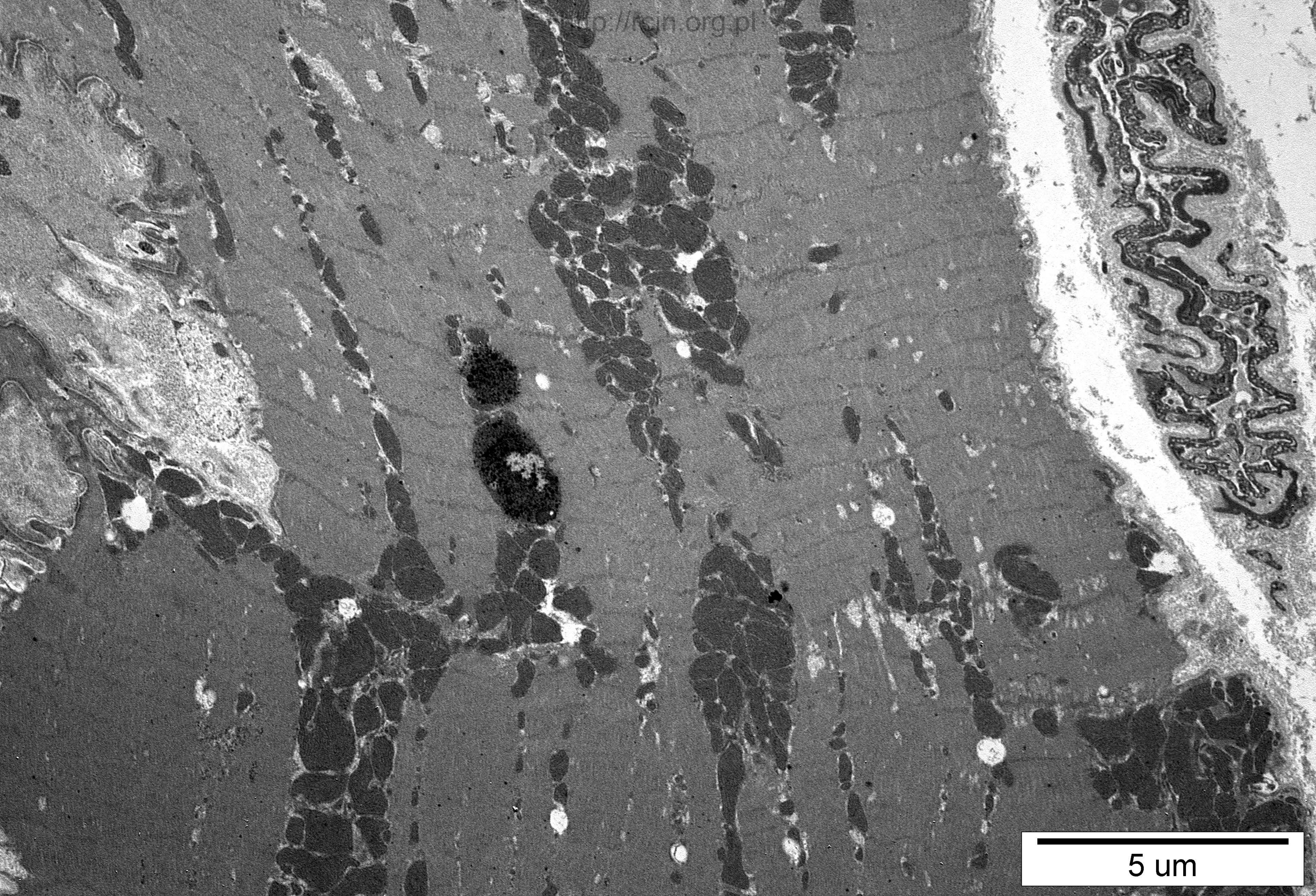
5 um



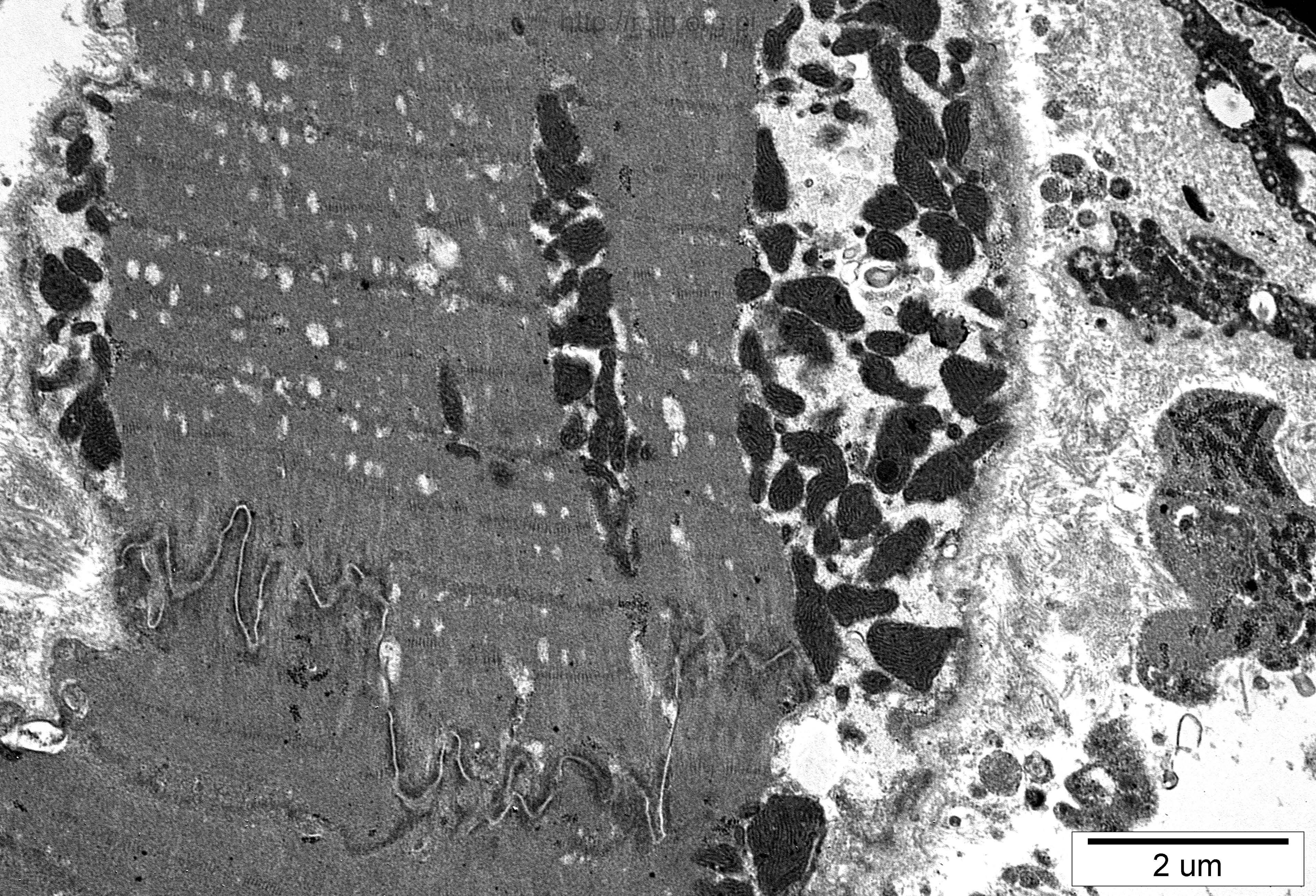
5 μm



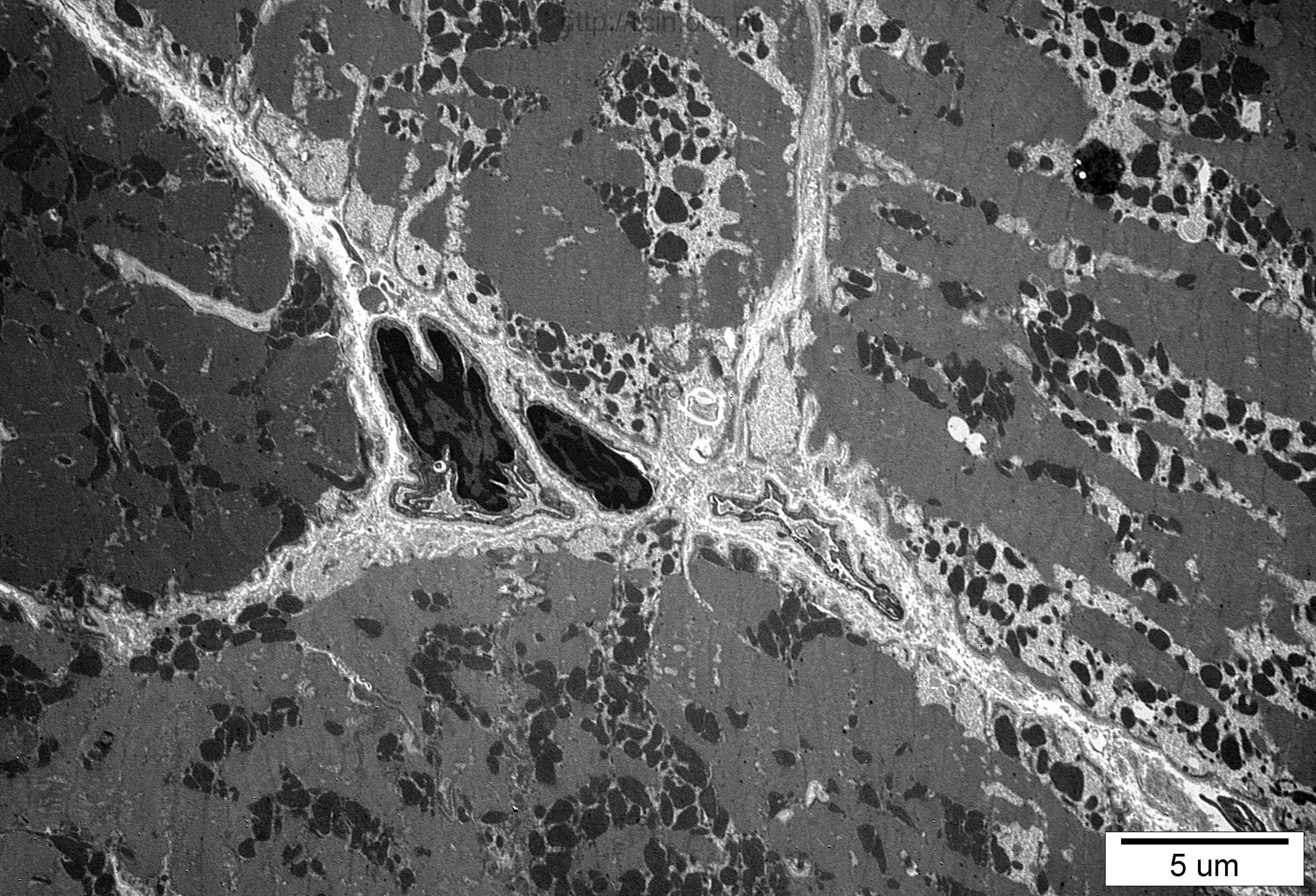
1 μm



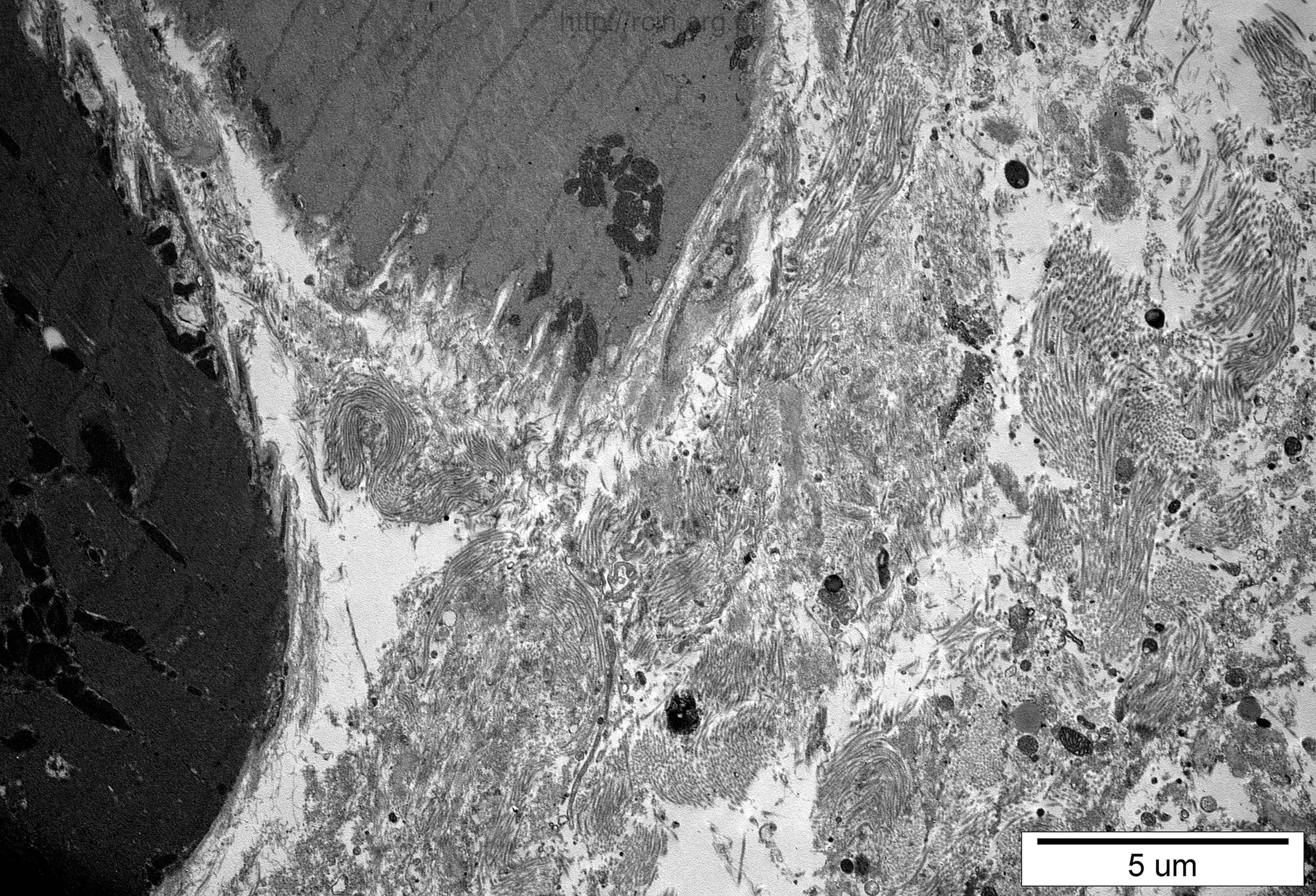
5 μ m



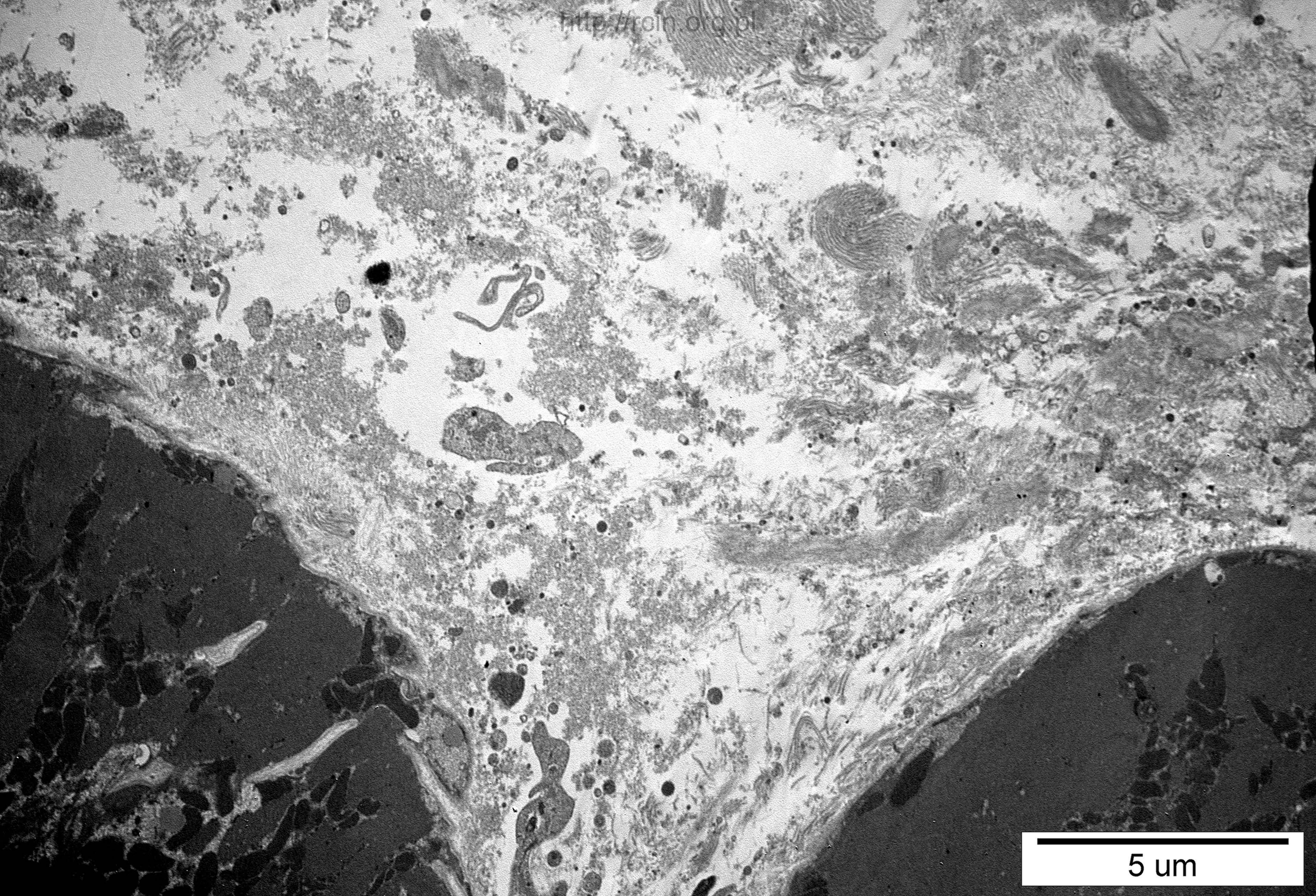
2 μm



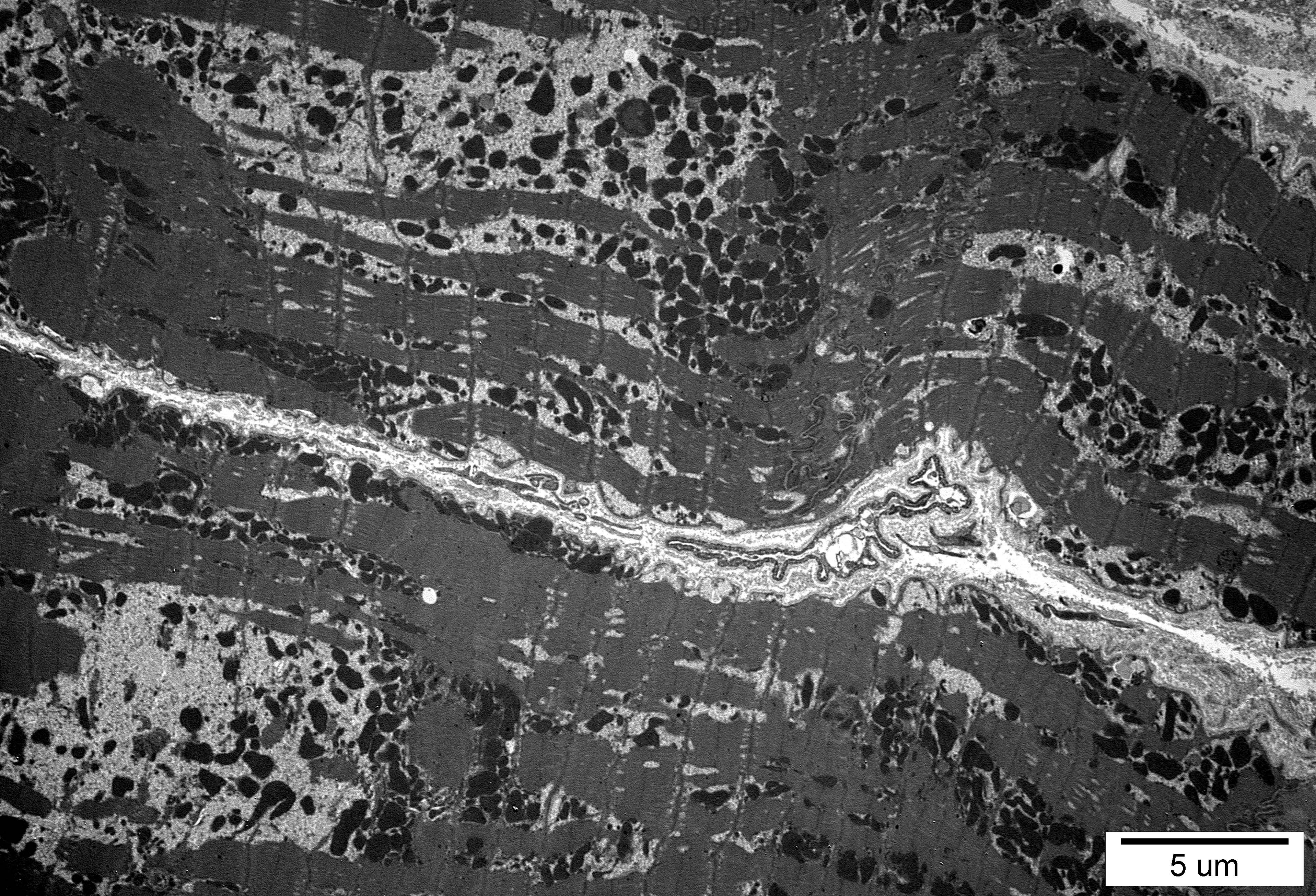
5 μ m



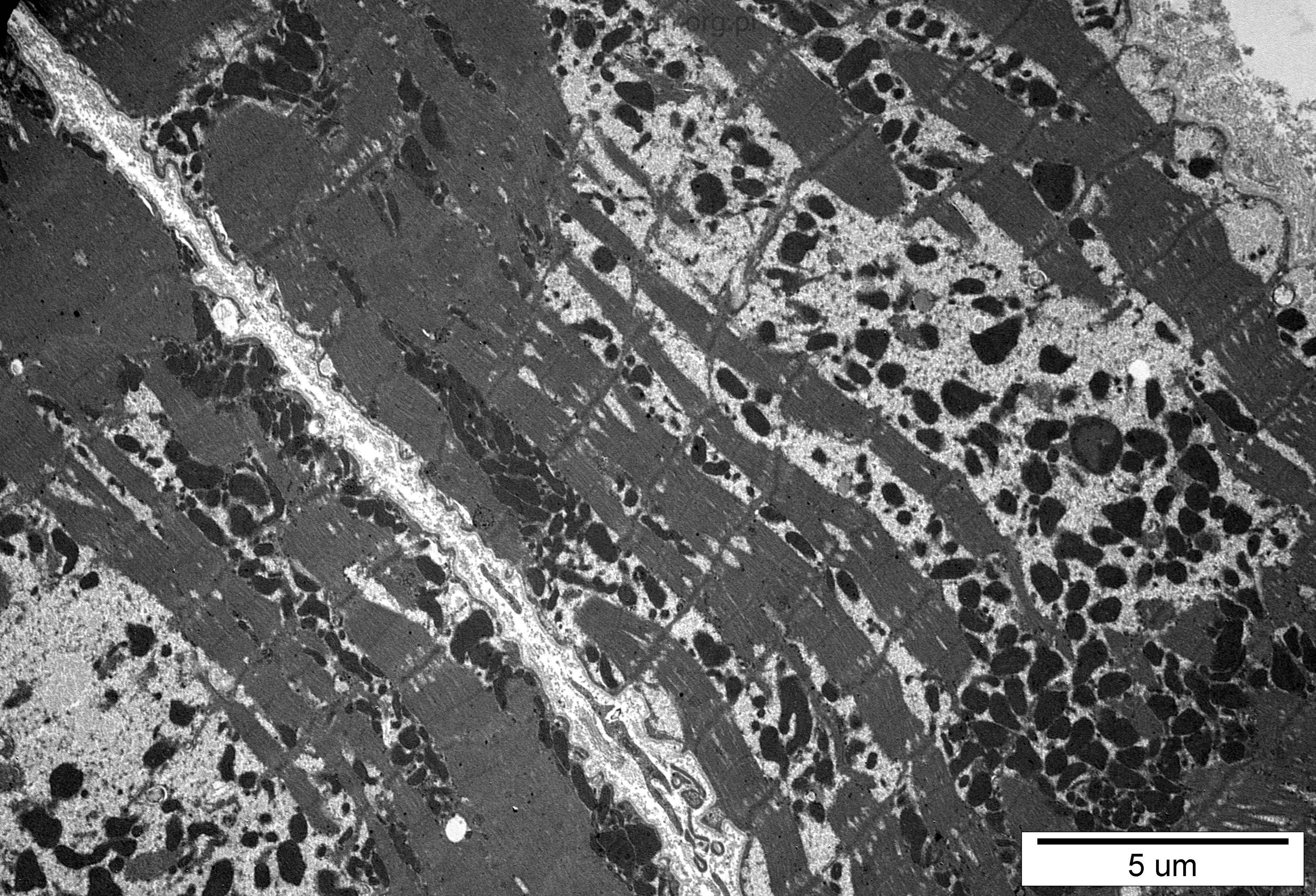
5 μ m



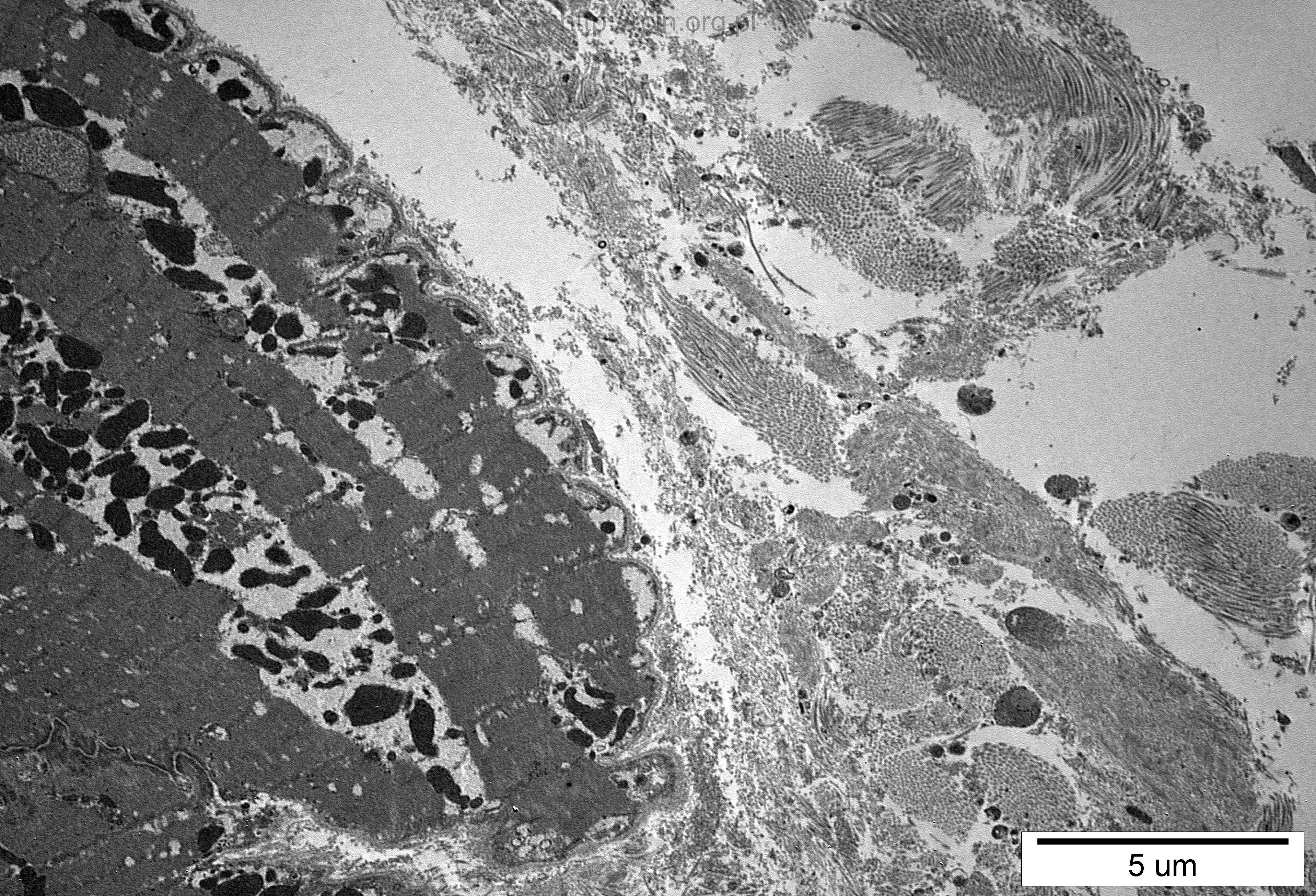
5 μm



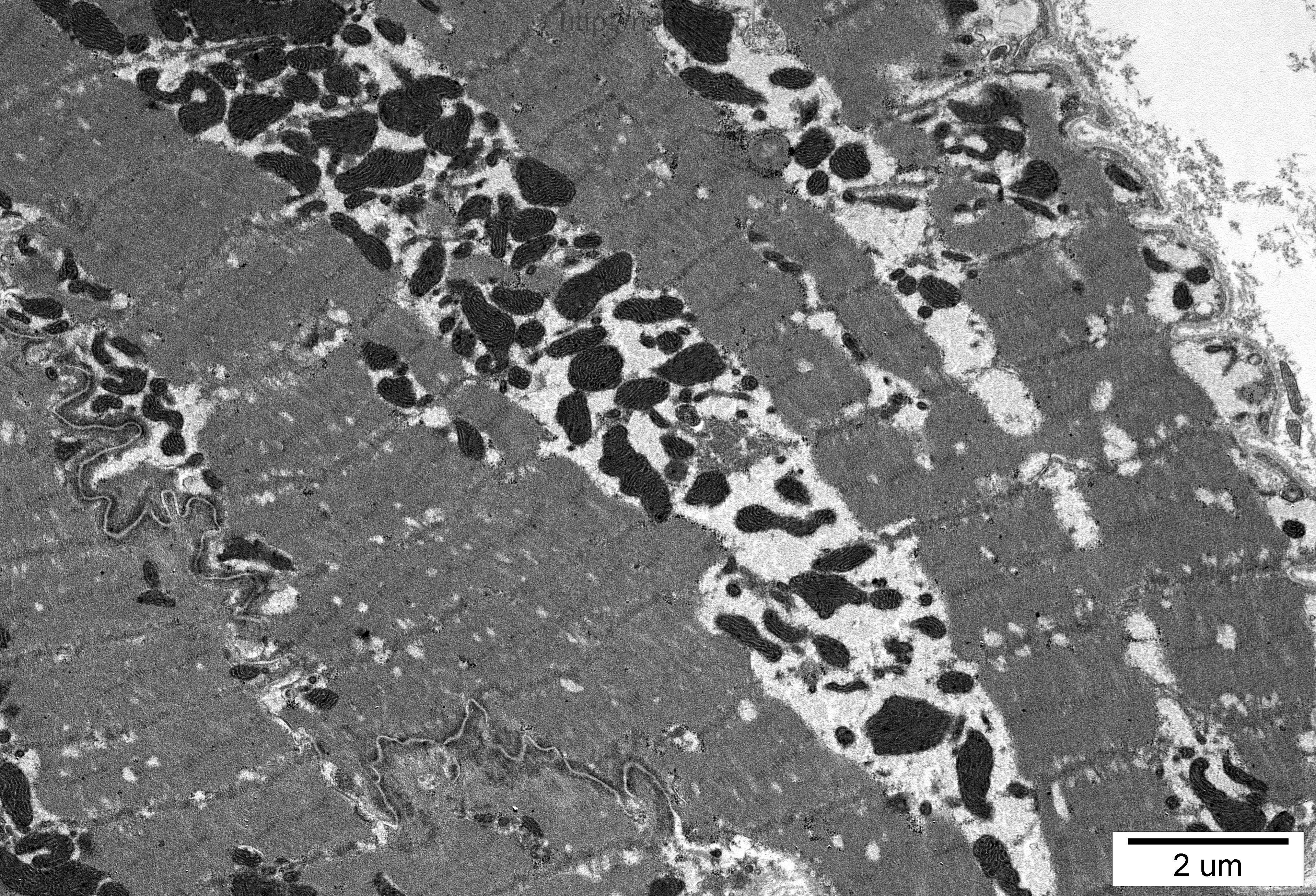
5 μm



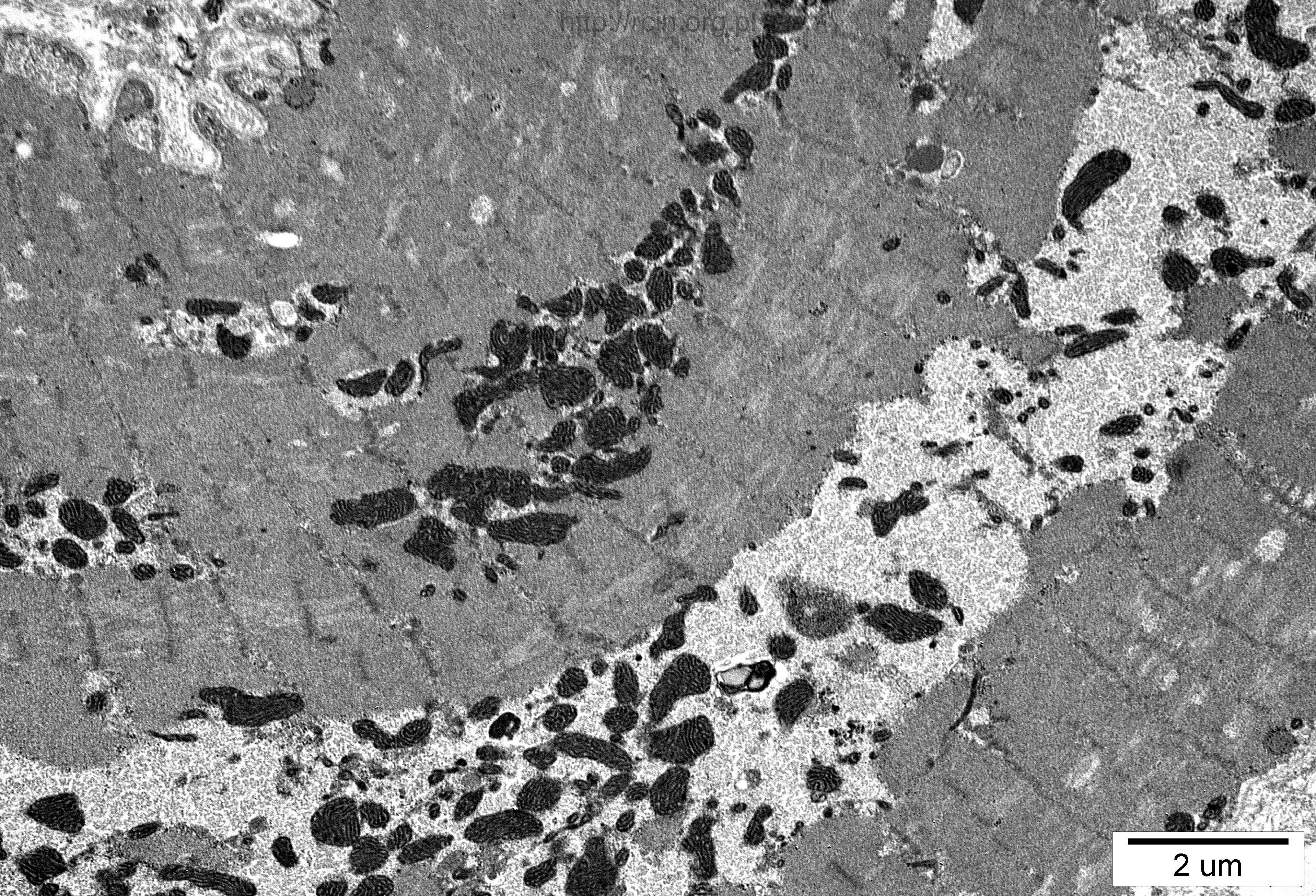
5 μm



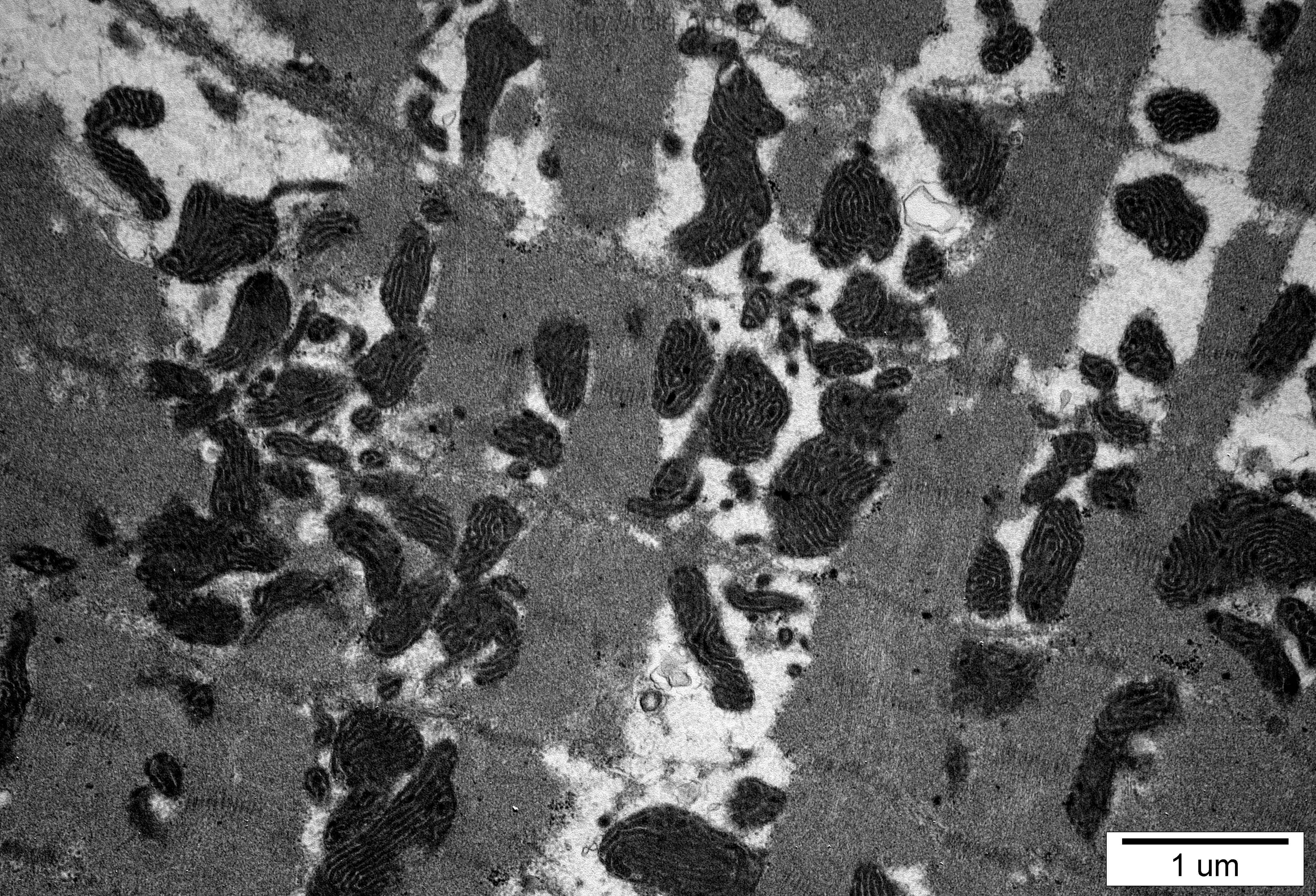
5 μ m



2 um



2 um



1 μm

K9397-8 serce

Ocena ultrastrukturalna wykazała znacznie zatartą strukturę sarkomerów (Fig. K9397-8-6, 7, 9) oraz rozproszenie i miejscowy ubytek miofibrili (Fig. K9397-8-5, 11, 14). Wstawka (intercalated disc) wykazywała prawidłowy przebieg (Fig. K9397-8-10). Obserwowano mitochondria o zachowanej strukturze grzebieni i bardzo ciemnej elektronowo macierzy (Fig. K9397-8-3, 4, 8, 17). Przestrzeń pozakomórkowa wypełniona była niezwykle obfitą tkanką łączną (Fig. K9397-8-1, 12, 13, 16).

Ultrastructural analysis revealed significantly blurred sarcomeres structure (Figs. K9397-8-6,7,9). Myofibrils were scattered and, focally, their loss were observed (Figs. K9397-8-5,11,14). The intercalated disc showed a normal course (Fig. K9397-8-10). Mitochondria characterized by preserved structure of cristae but very electron-dark matrix were observed (Figs. K9397-8-3,4,8,17). The extracellular space was filled with extremely abundant connective tissue (Figs. K9397-8-1,12,13,16).