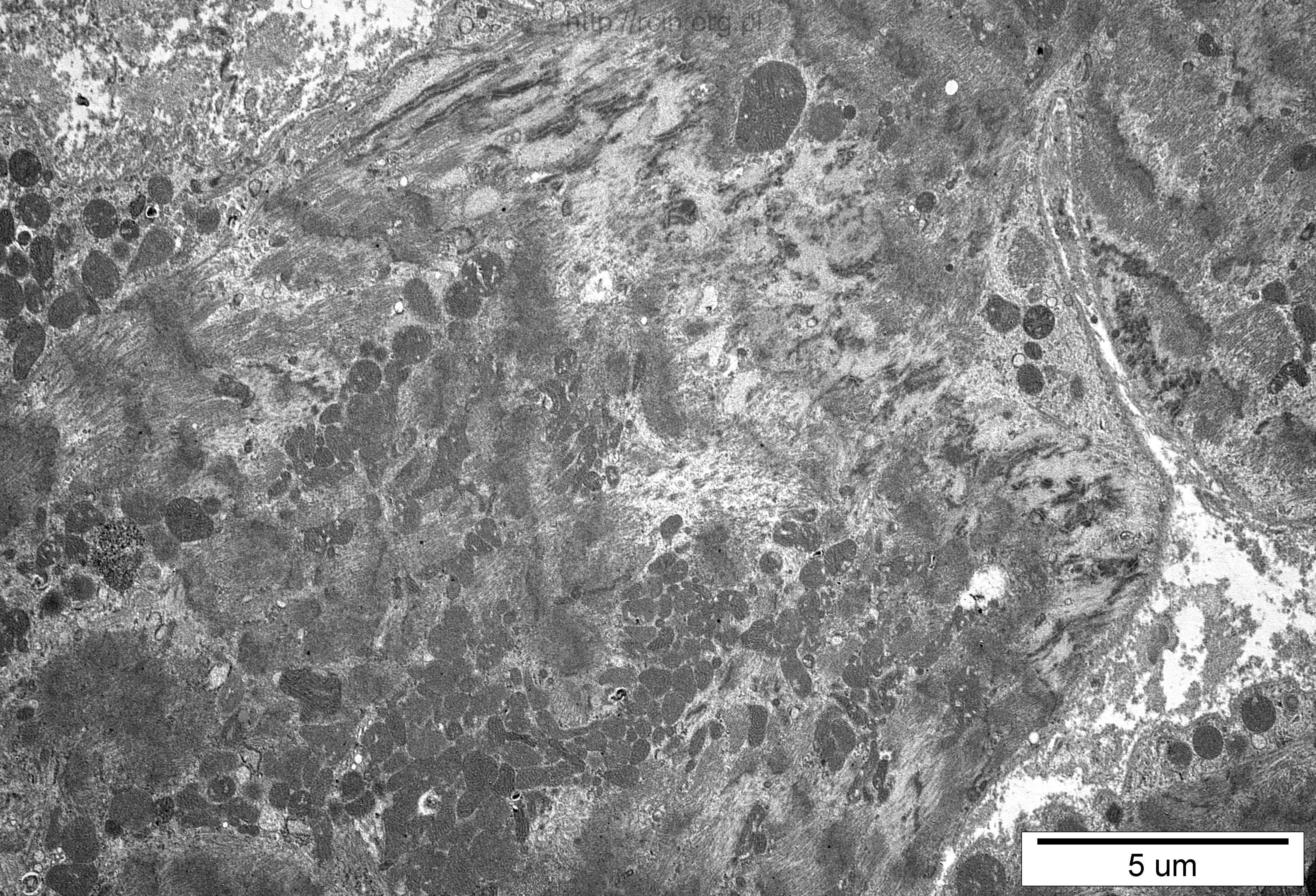
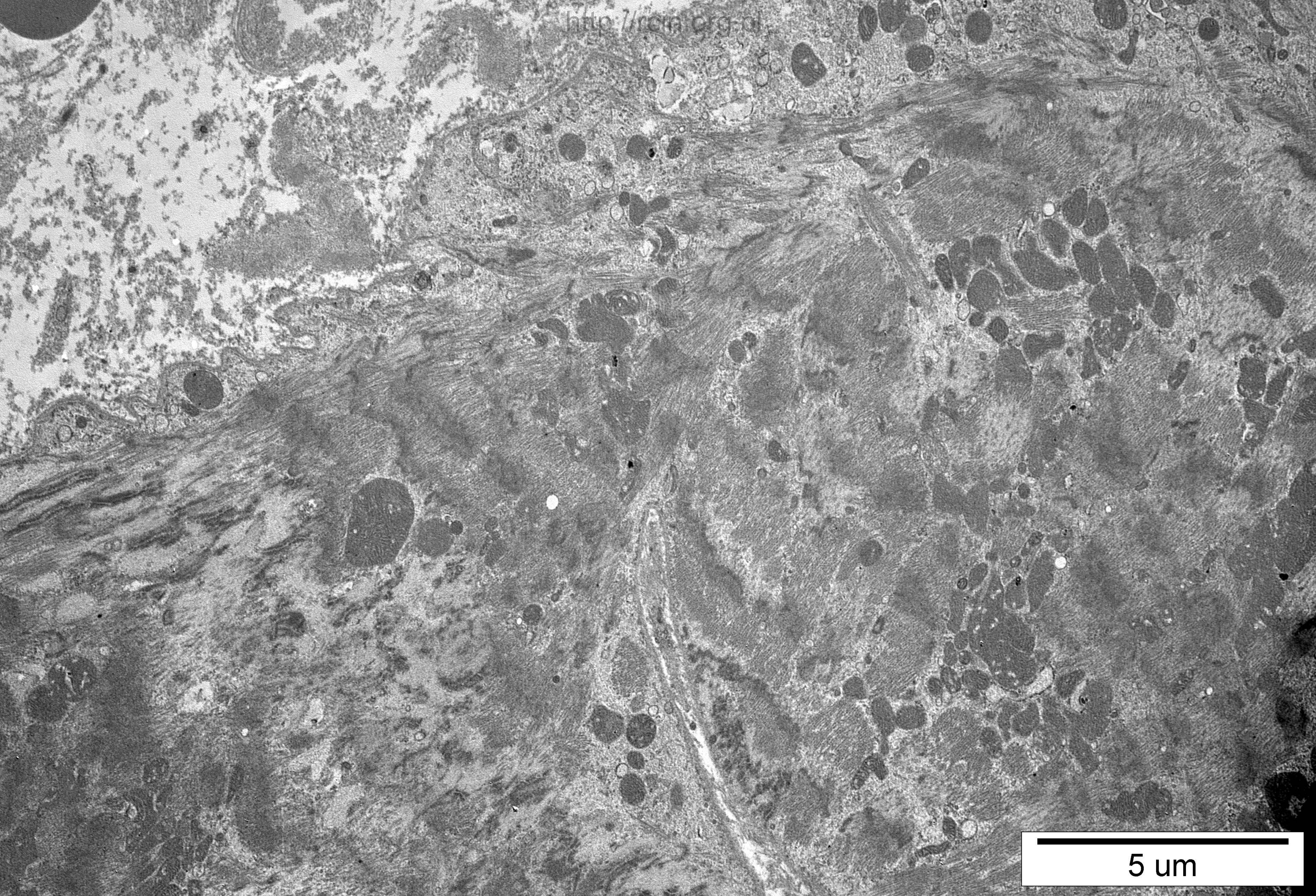


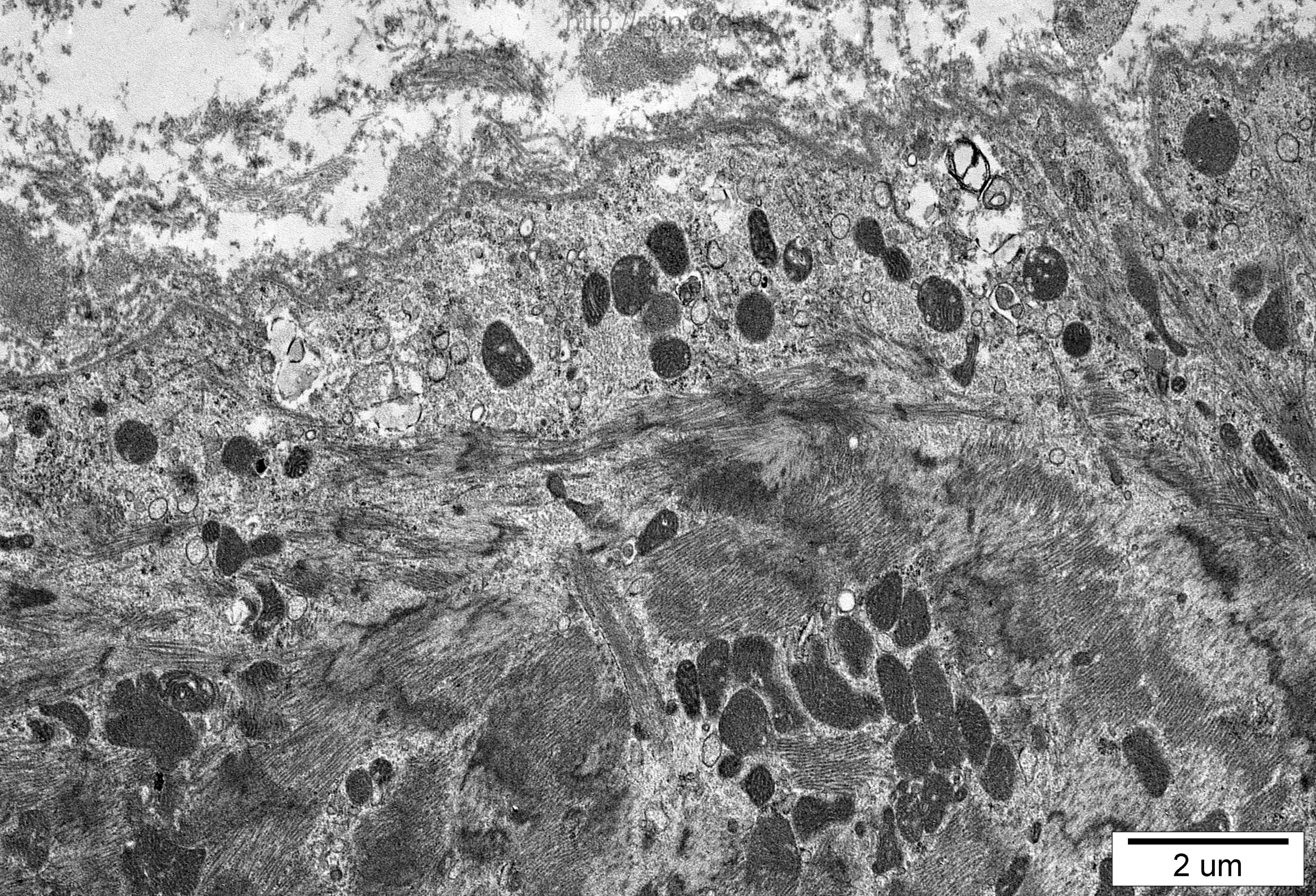
5 μm



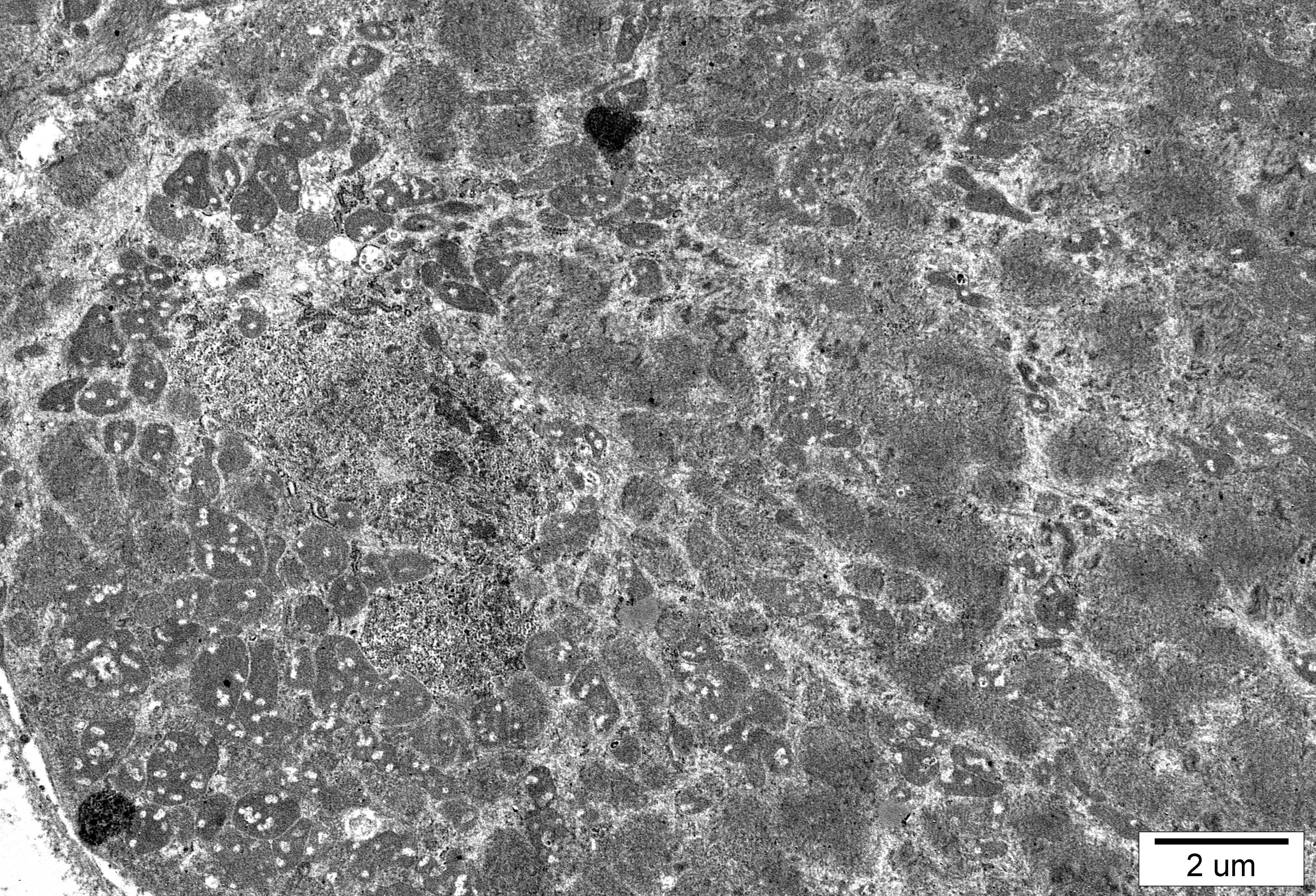
5 μm



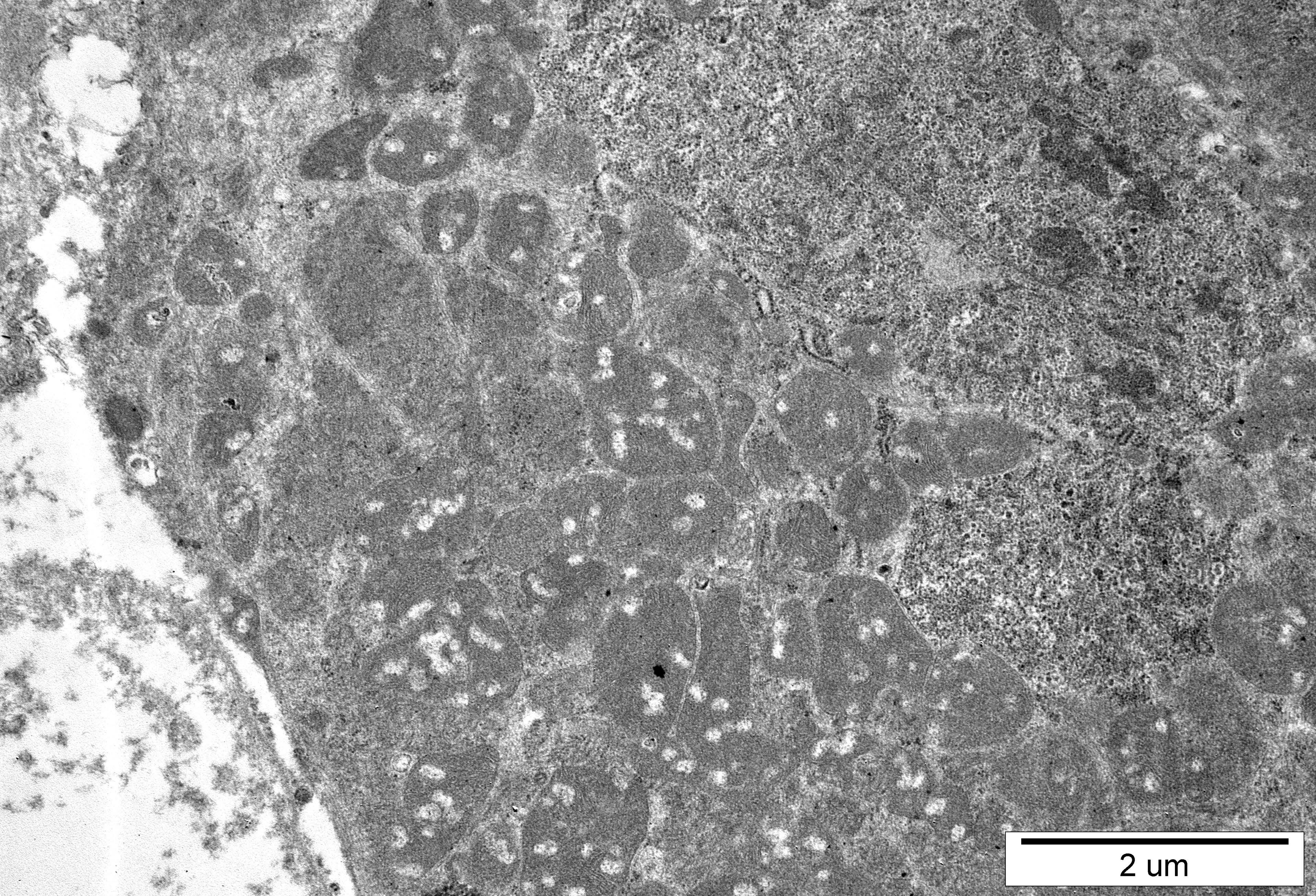
5 μm



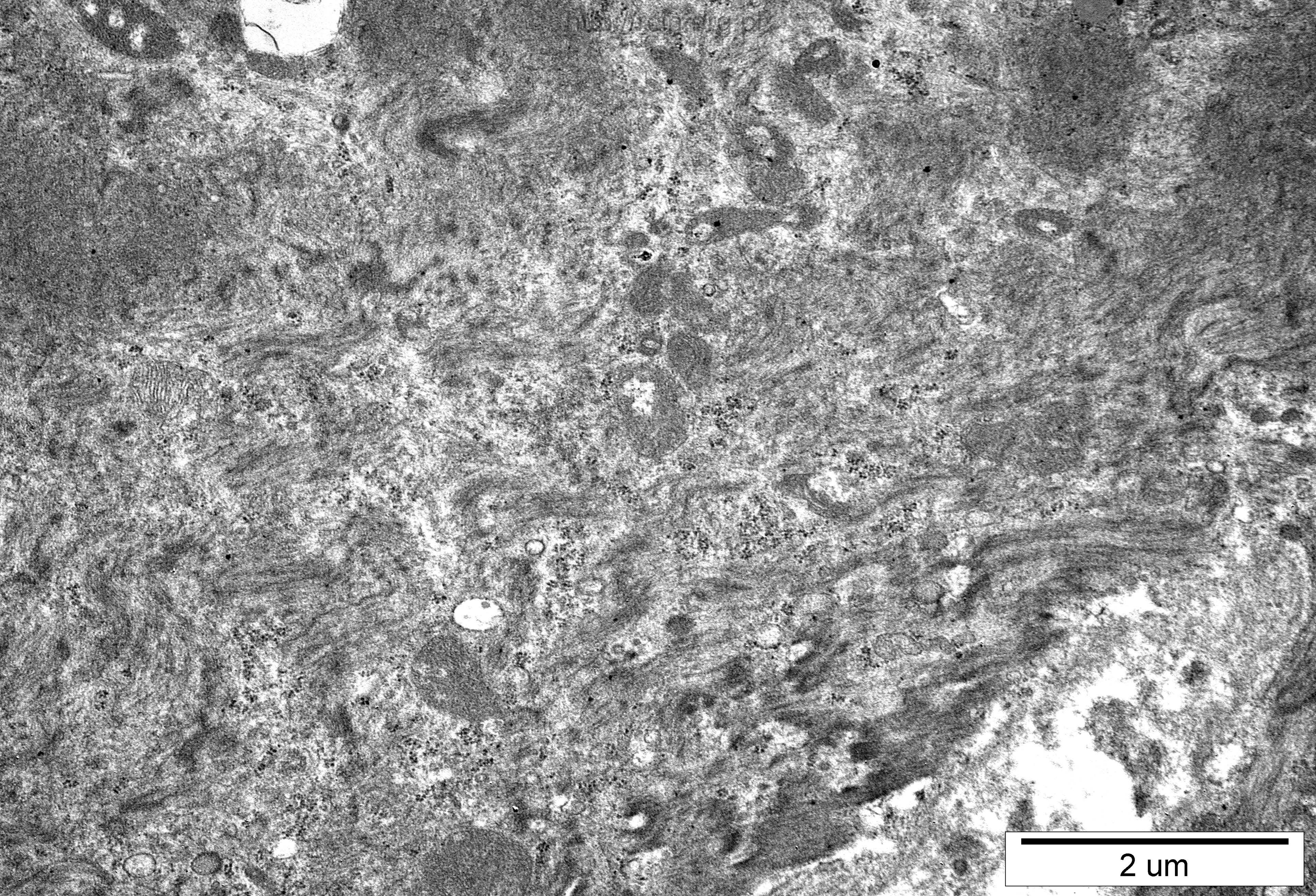
2 um



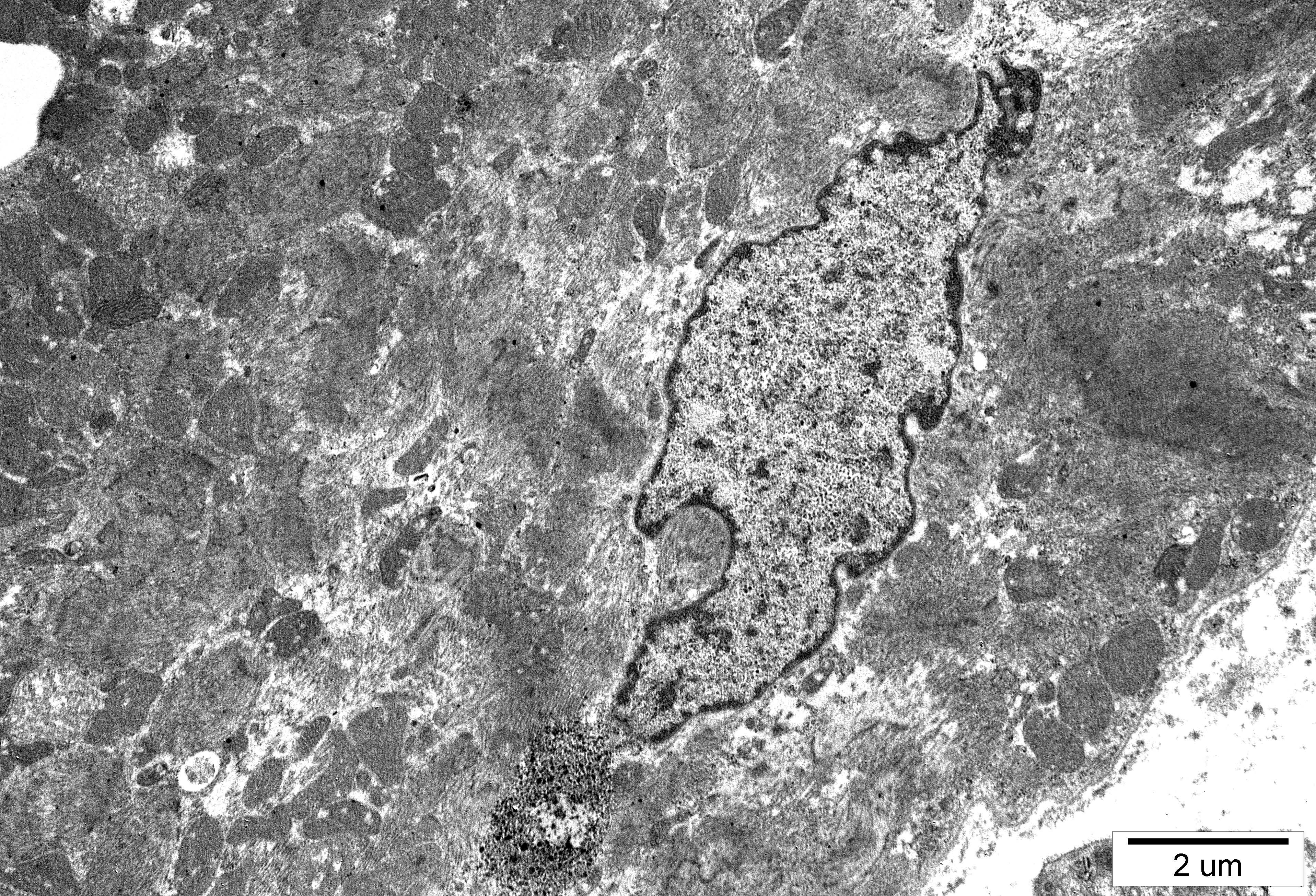
2 um



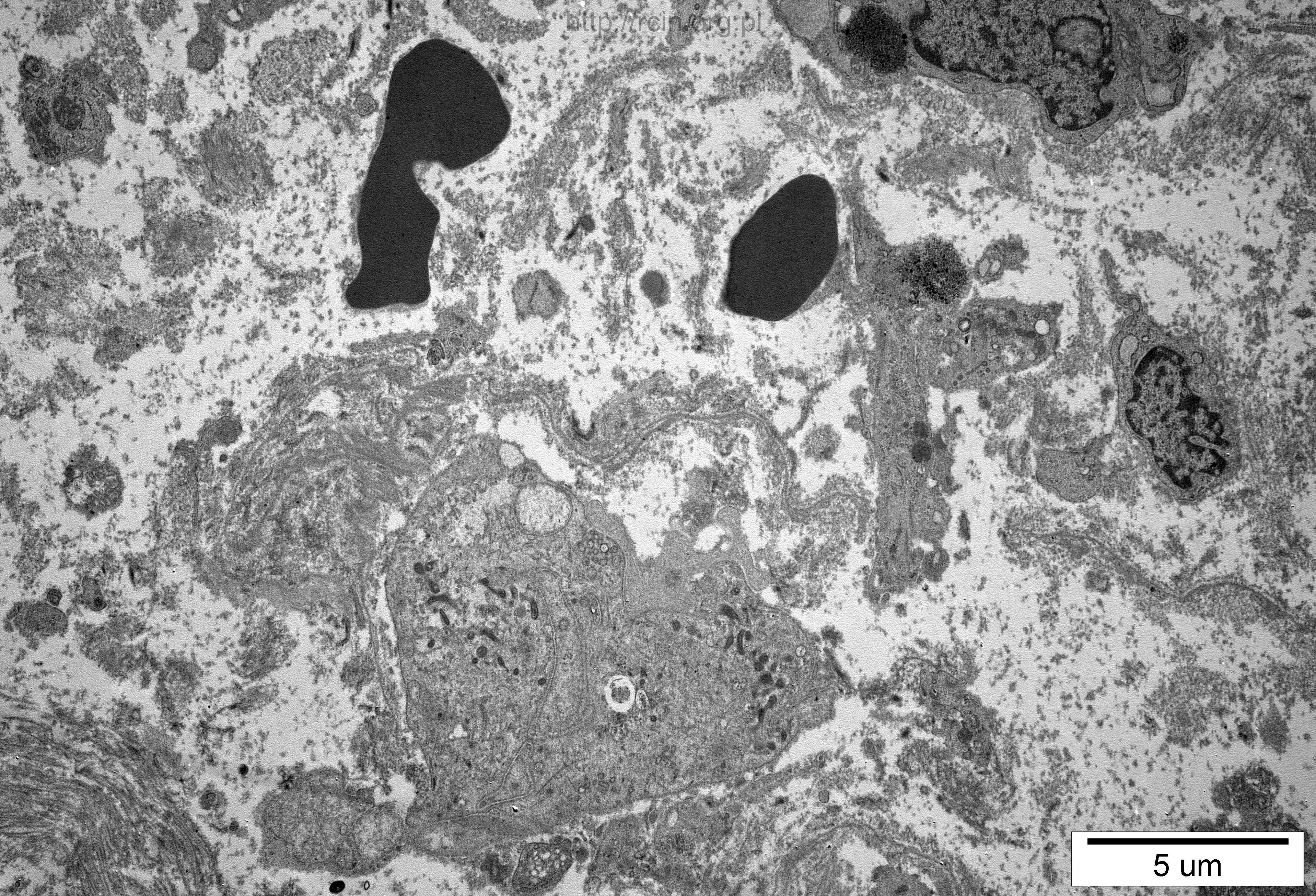
2 um



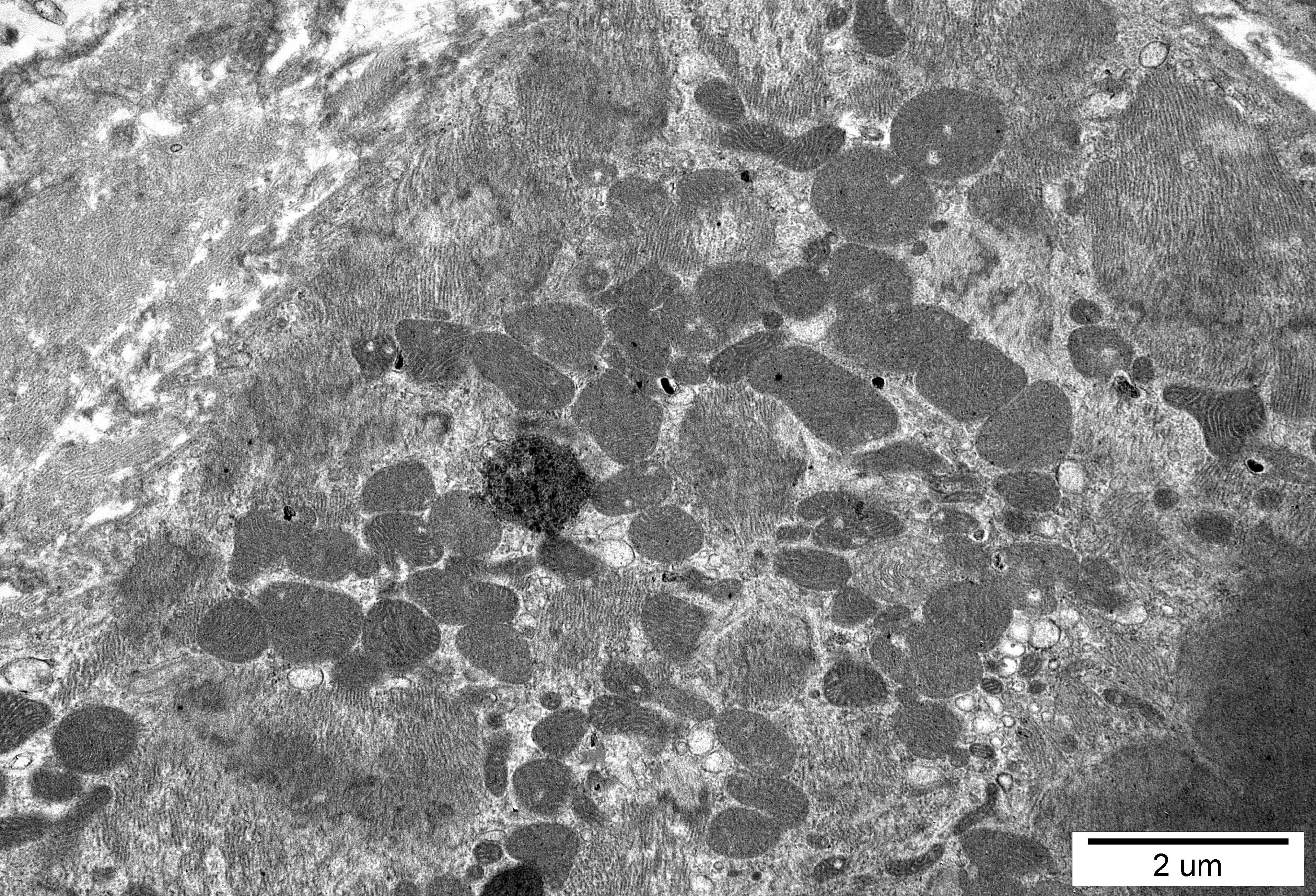
2 μm



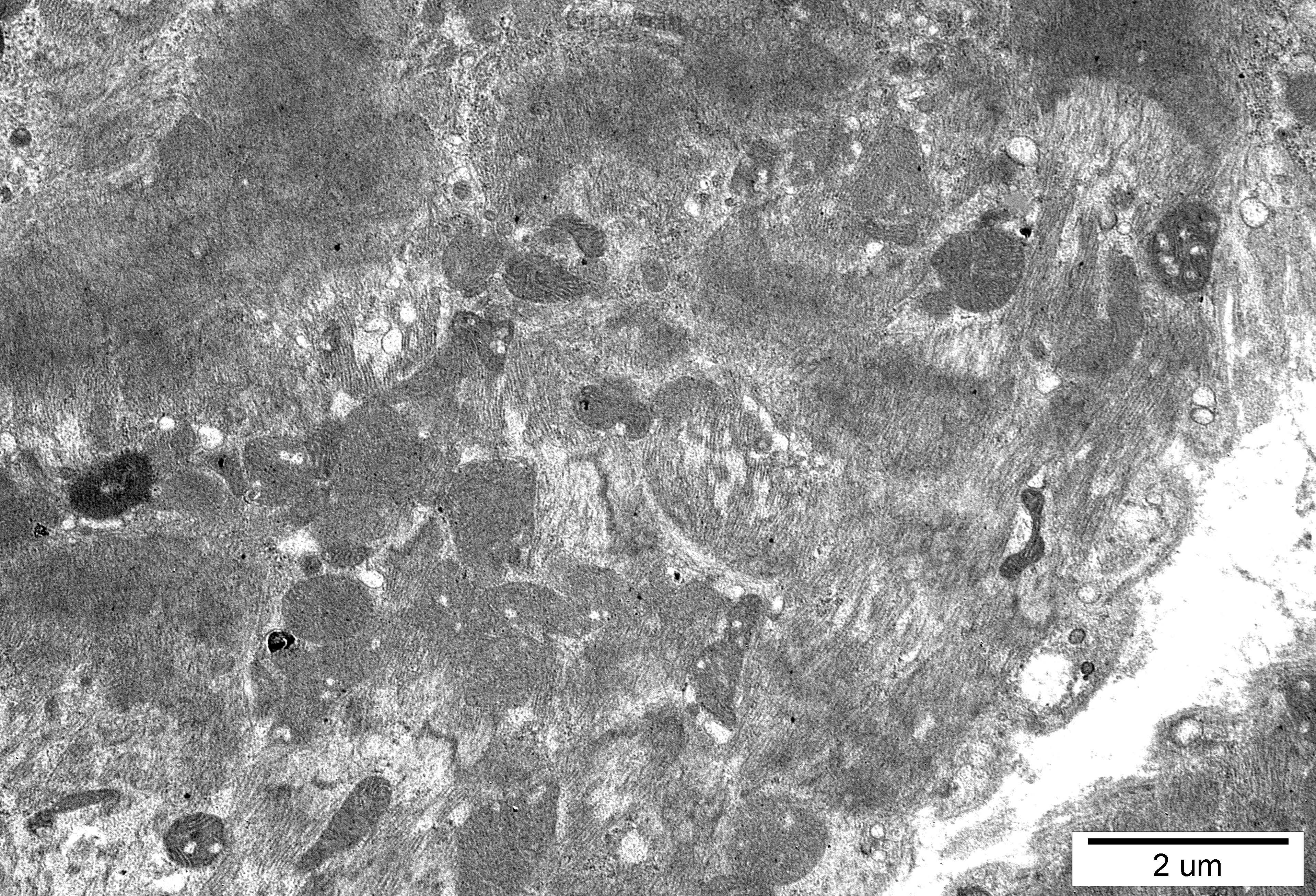
2 μm



5 um



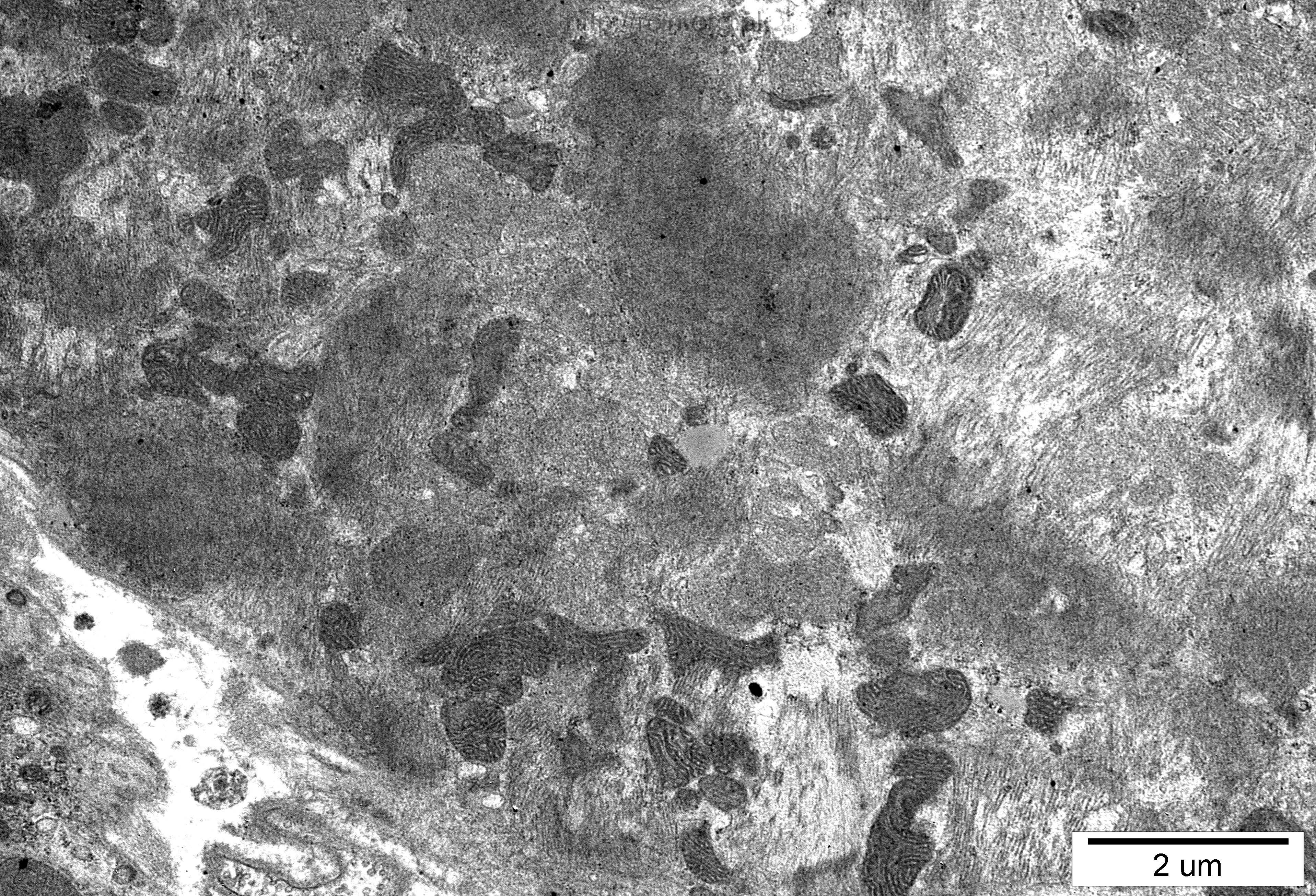
2 um



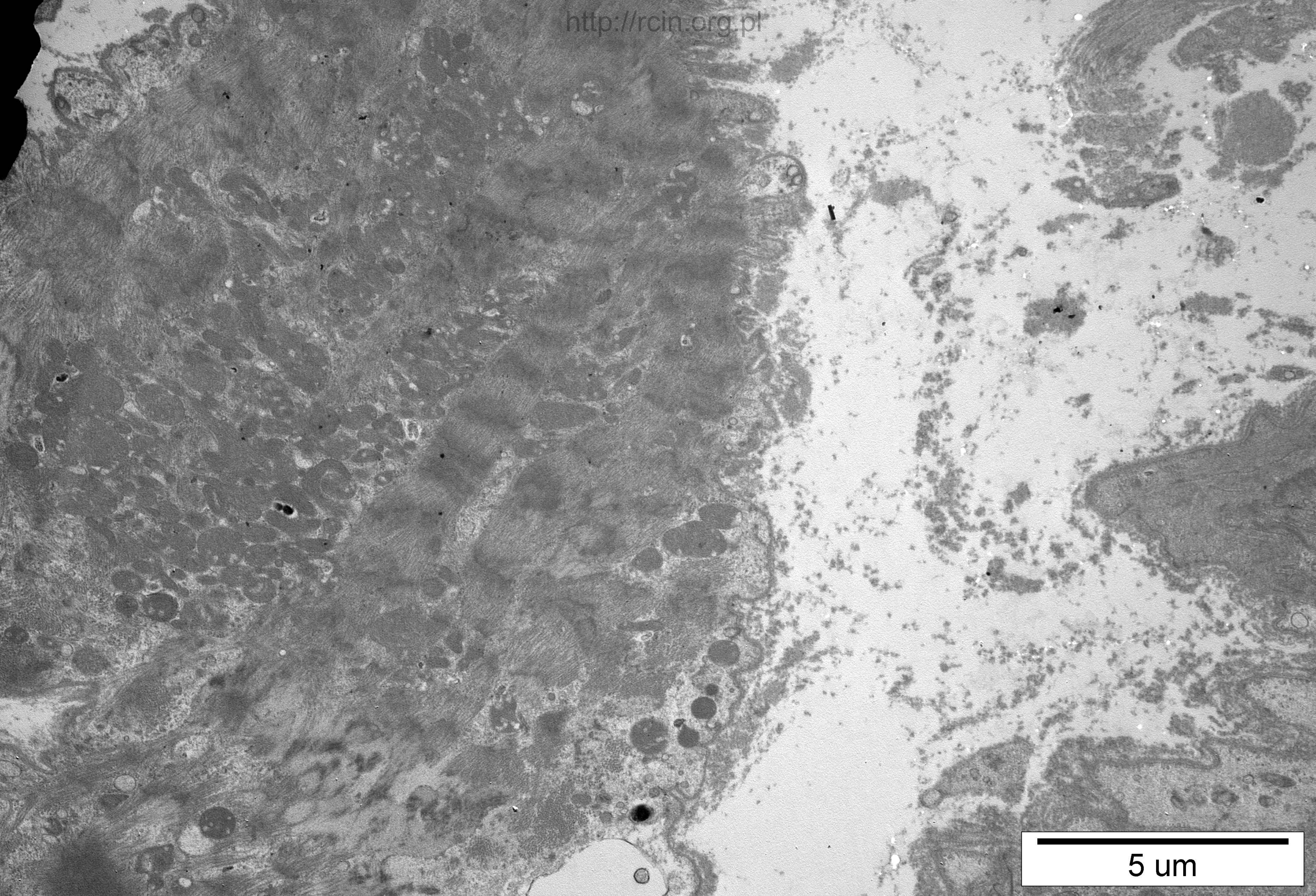
2 um



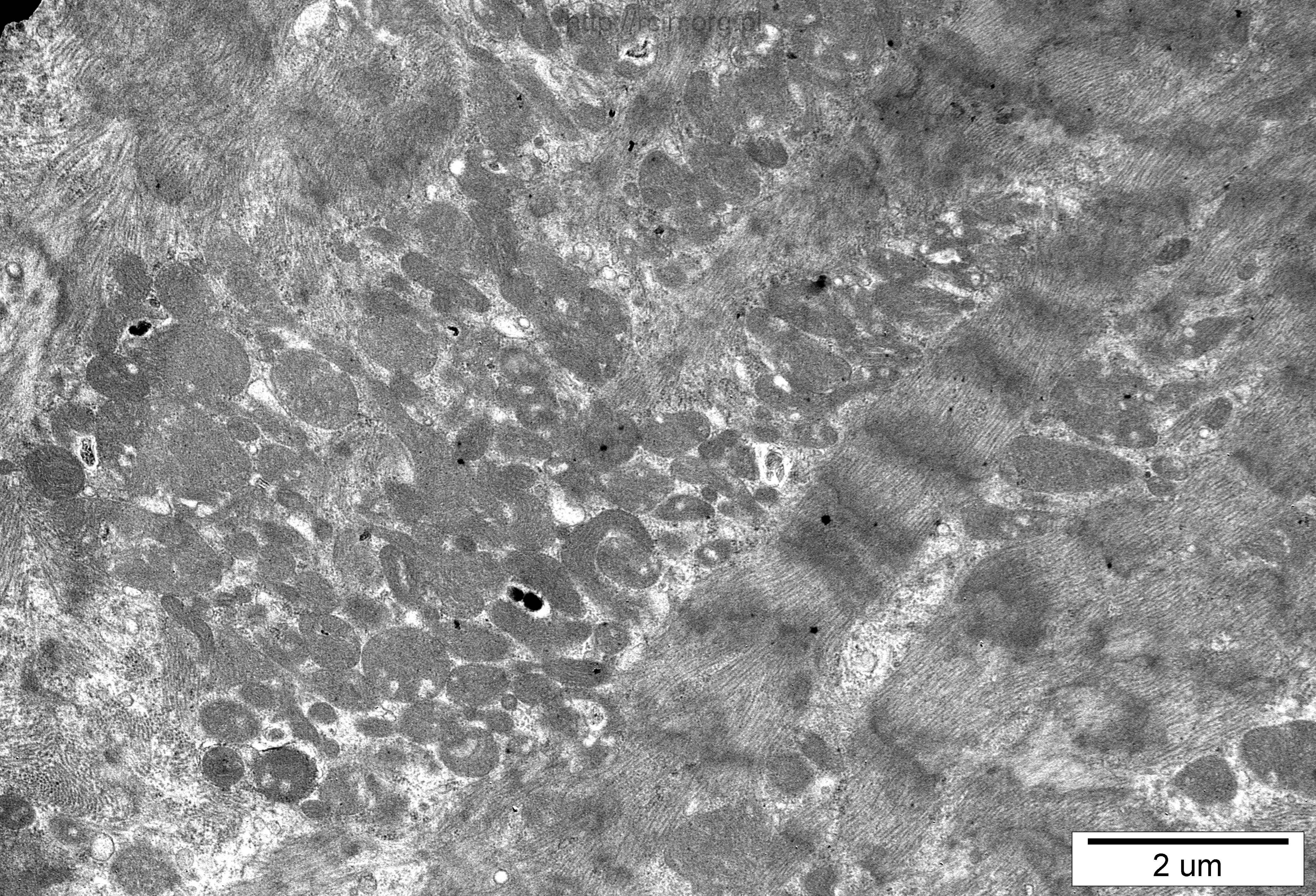
2 um



2 um



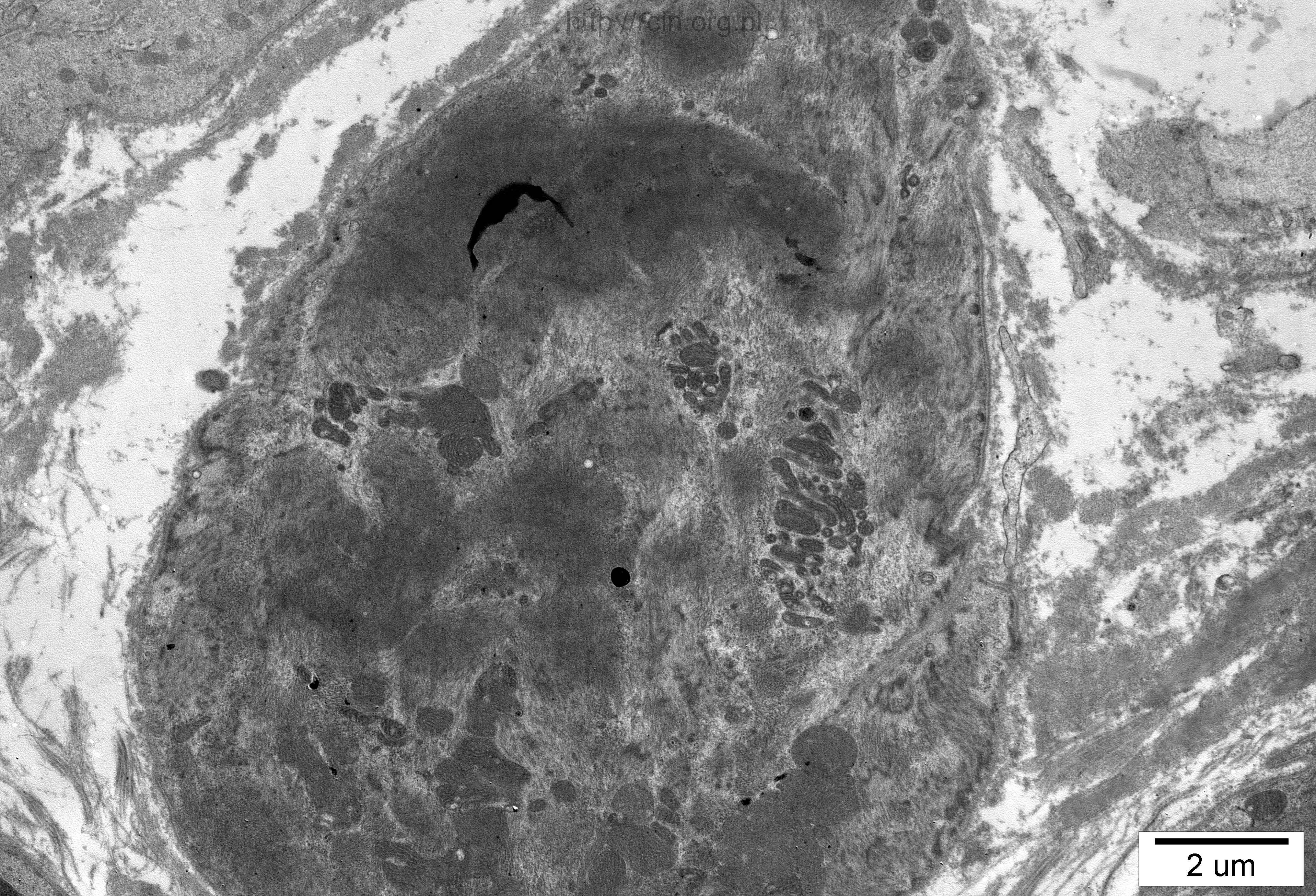
5 μm



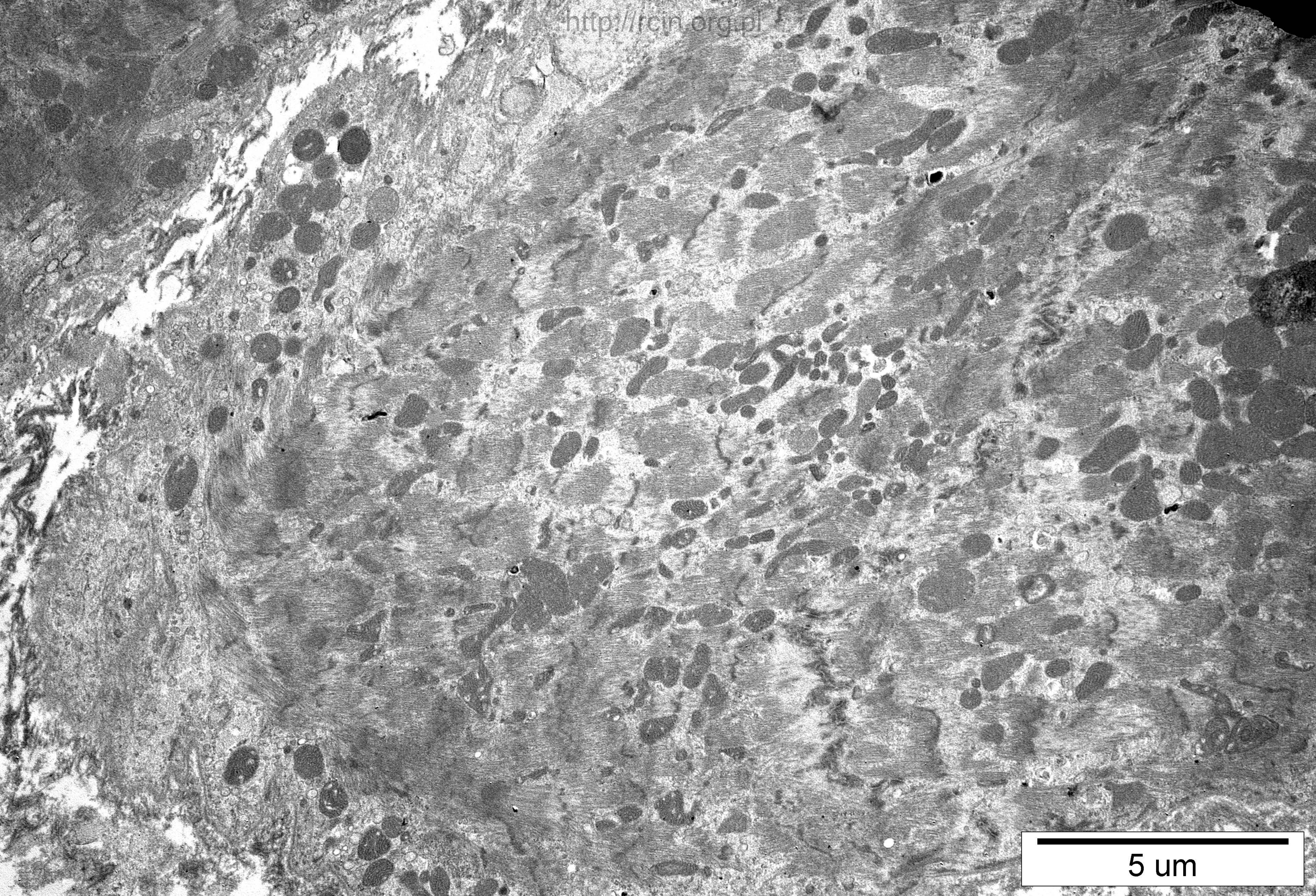
2 um



2 μm



2 um



5 um

37-2000 (26.07.2000)

Analiza ultrastrukturalna wykazała zaburzenia w układzie sarkomerów (Fig. 37-2000-1, 8, 13, 14). W niektórych kardiomiocytach obecne były wakuole (Fig. 16). W cytoplazmie licznie występowały mitochondria o zmienionej morfologii (Fig. 2, 3, 4, 5, 6, 10, 11, 13, 15, 17, 18). W przestrzeni zewnątrzkomórkowej bogatej w materiał łącznotkankowy obecne były naczynia kapilarne ze śródbłonkiem o cechach nekrotycznych (Fig. 12).

Ultrastructural analysis revealed changes in the sarcomere pattern (Figs. **37-2000**-1,8,13,14). Vacuoles were present in some cardiomyocytes (Fig. 16). Ultrastructurally altered mitochondria were abundant in the cytoplasm (Figs. 2,3,4,5,6,10,11,13,15,17,18). In the extracellular space connective tissue was abundant and capillaries with necrotic endothelium were present (Fig. 12).