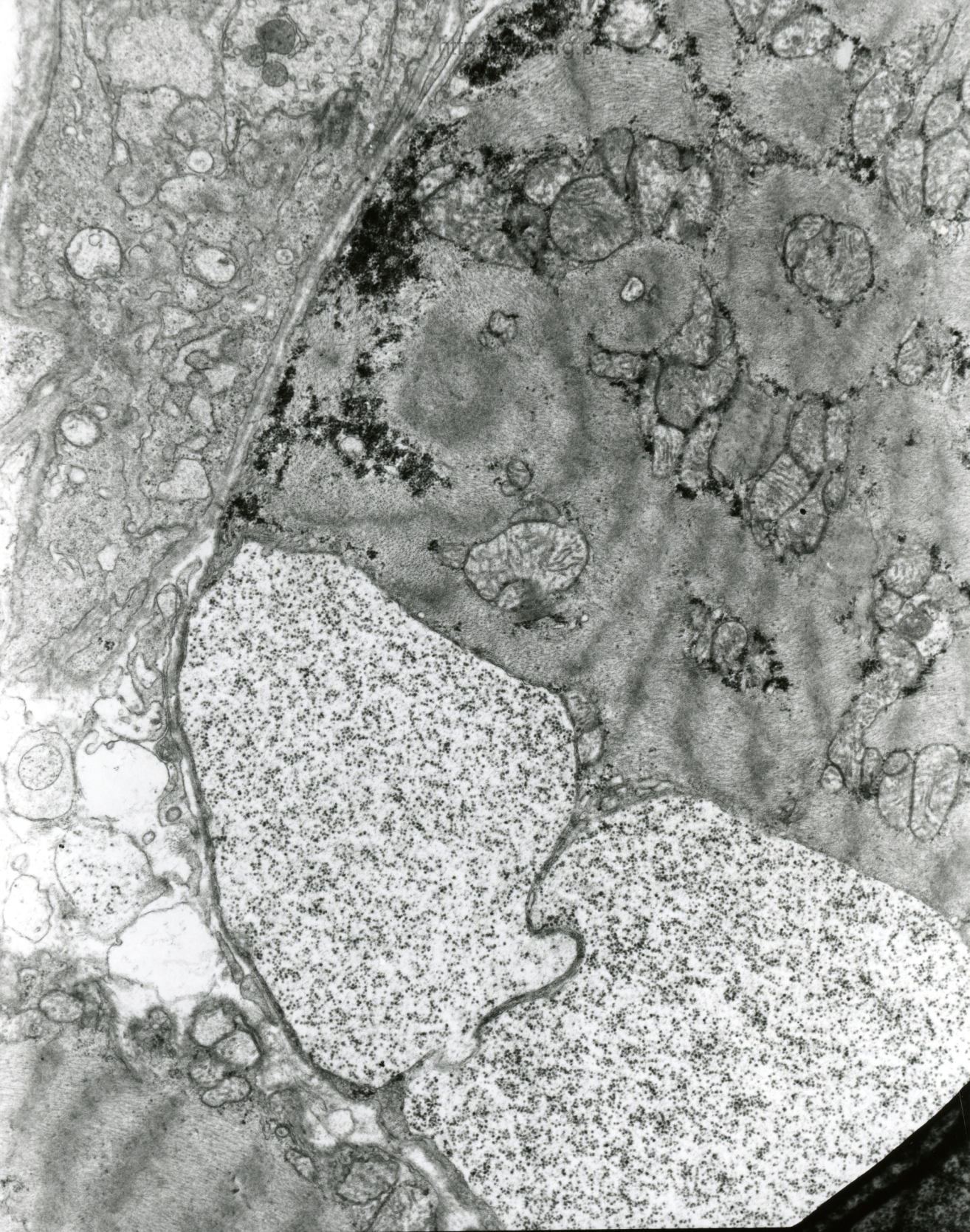


AF 42/04/serce
499960 00 AKU 1X5000

Fig. 1



HF 42/04/serce
400059 80.0KV 1X5000

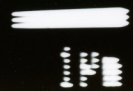
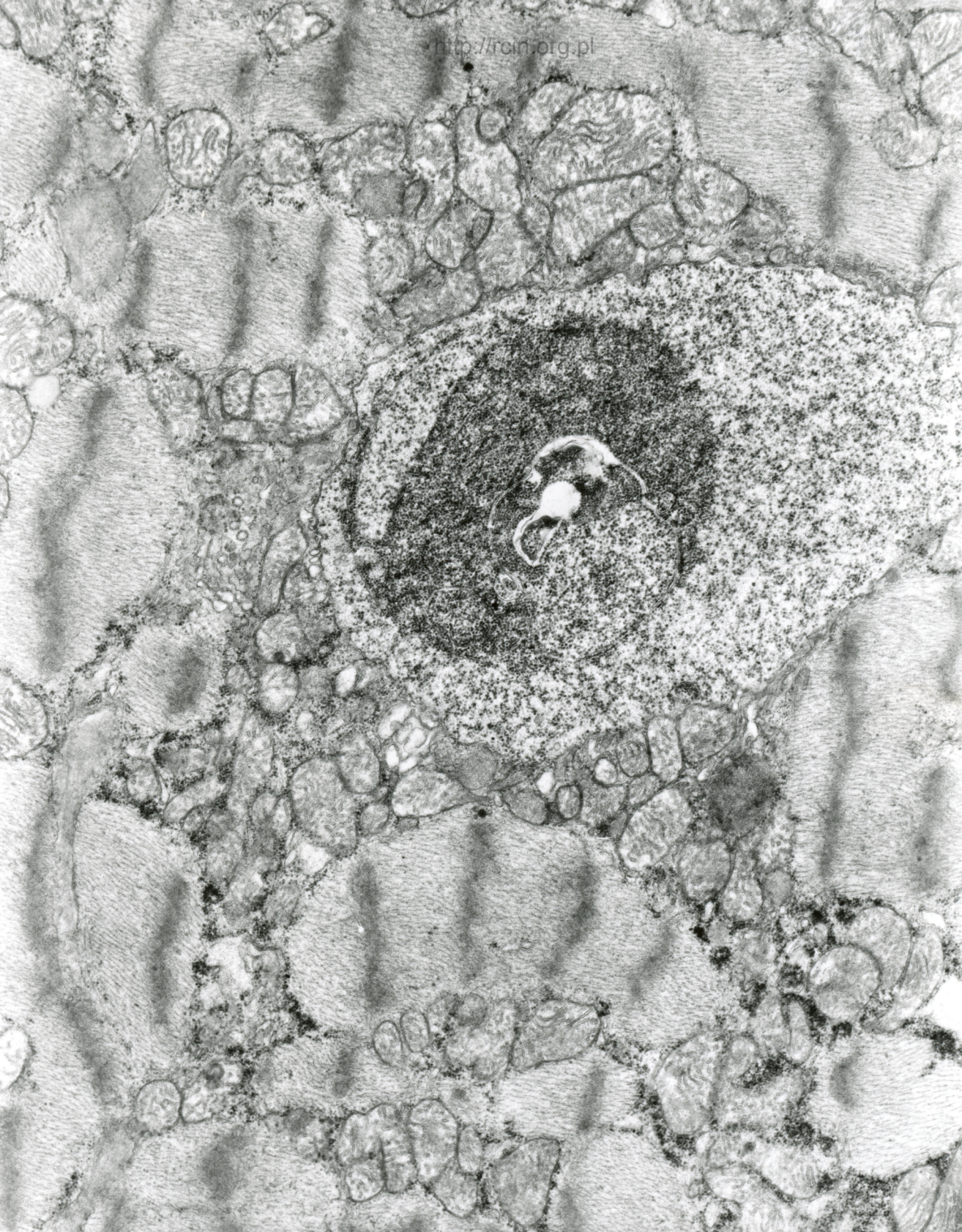
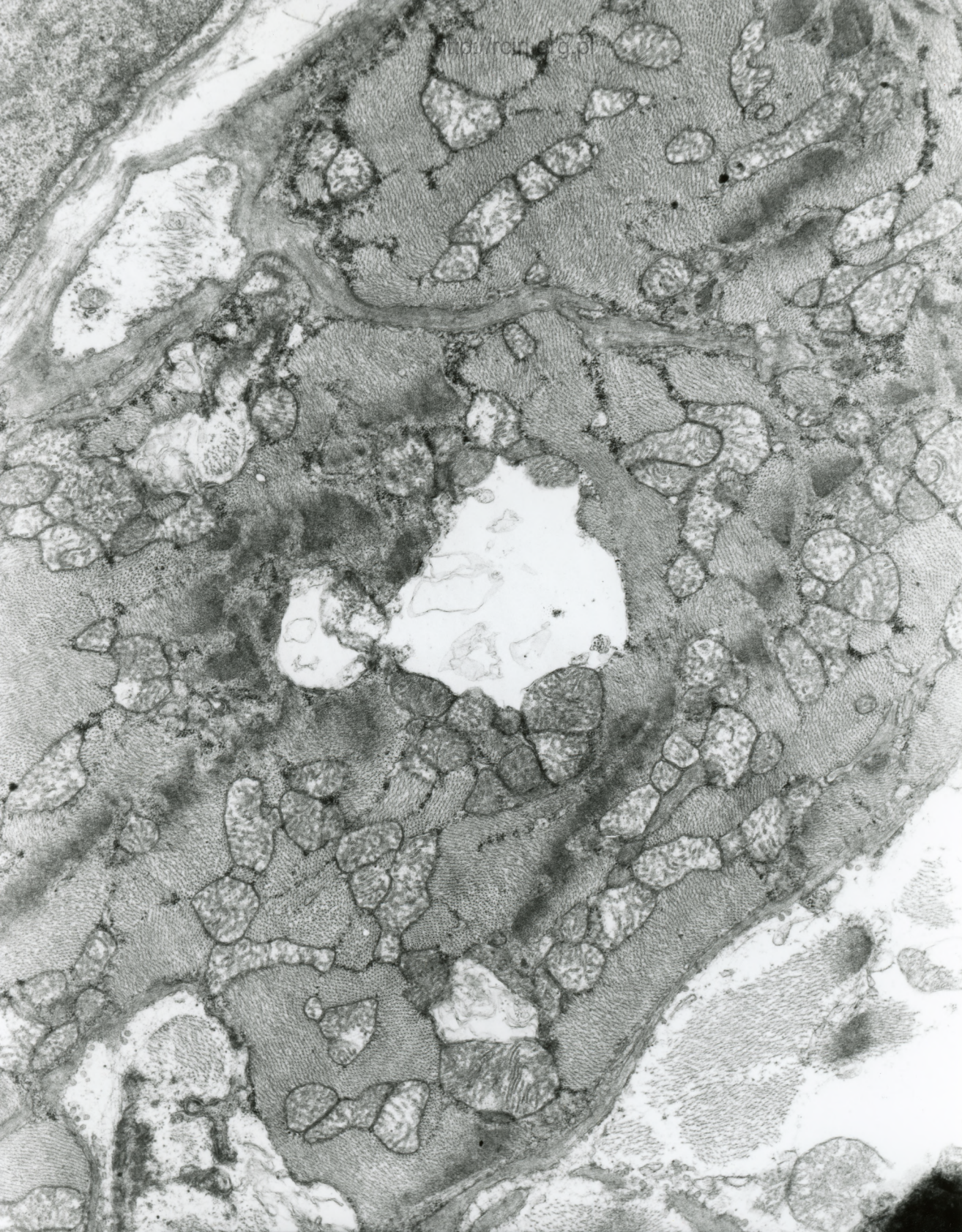


Fig. 3



HF 42/04/serce
AP0058 00 MWU TVP000

Fig. 4



mirrored.org.pl

AF 42/04/20702
498875 30 PKU 125000

Fig. 5

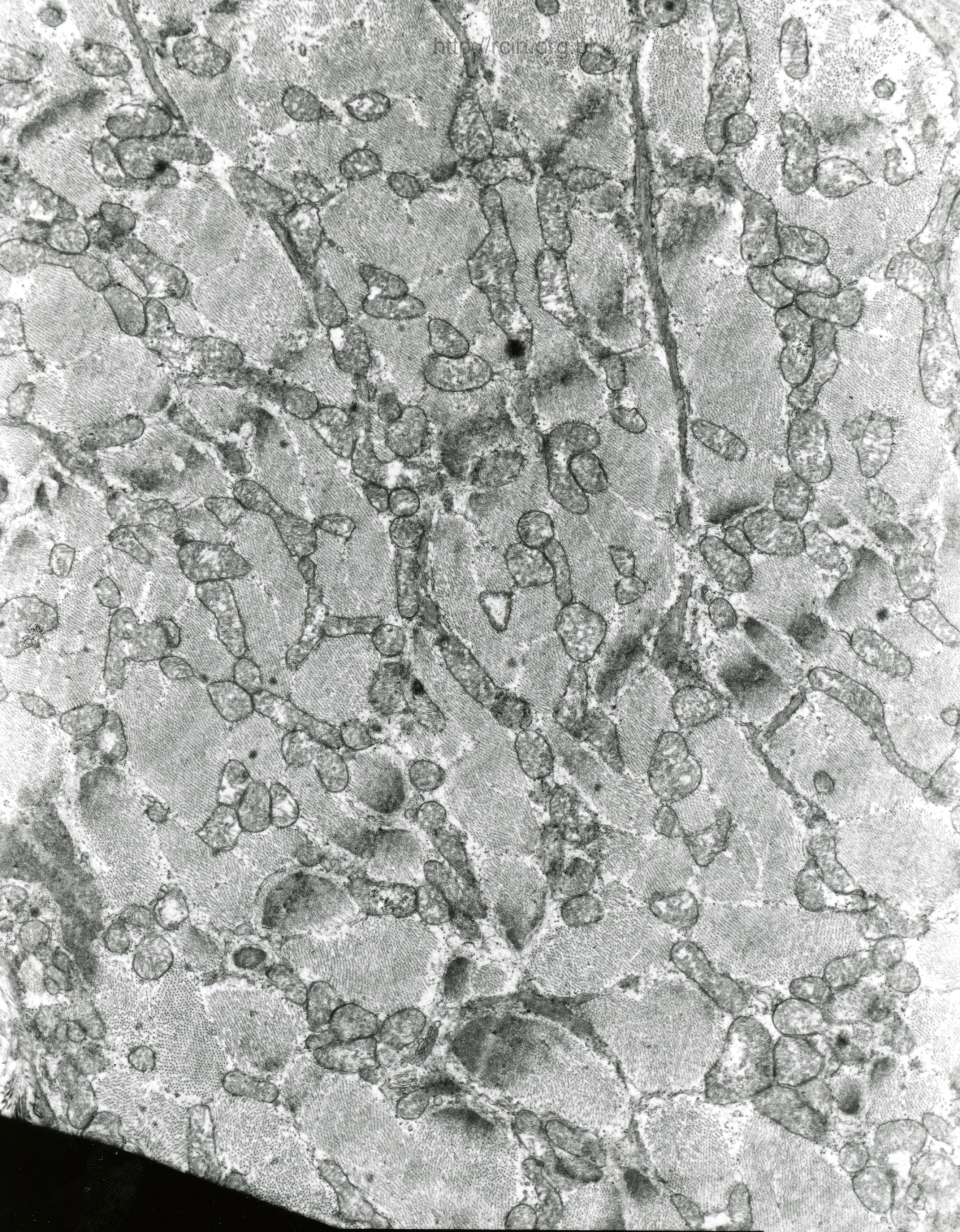
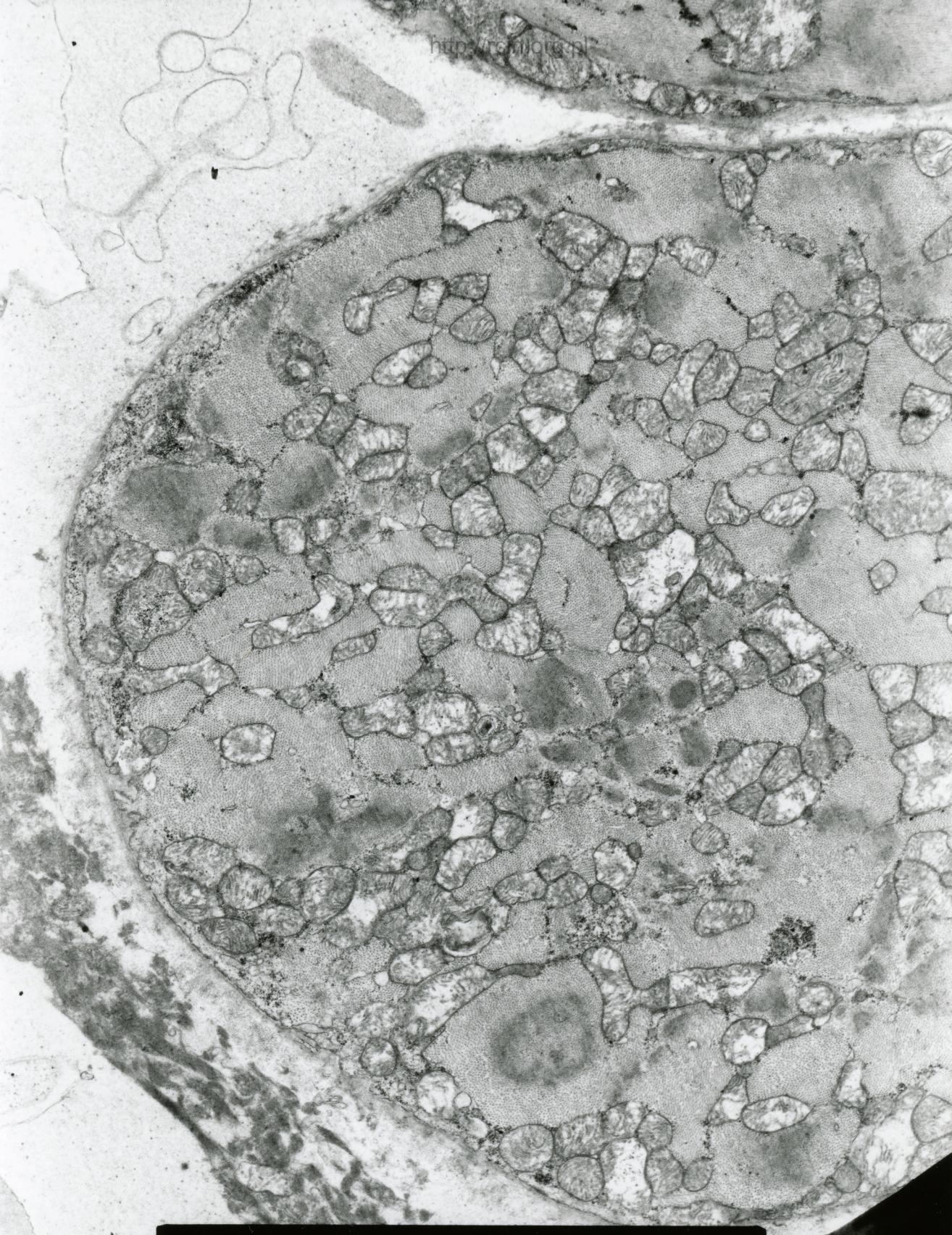


Fig. 6



MF 42/84/0170
000000 00 0000 114000 000

Fig. 7

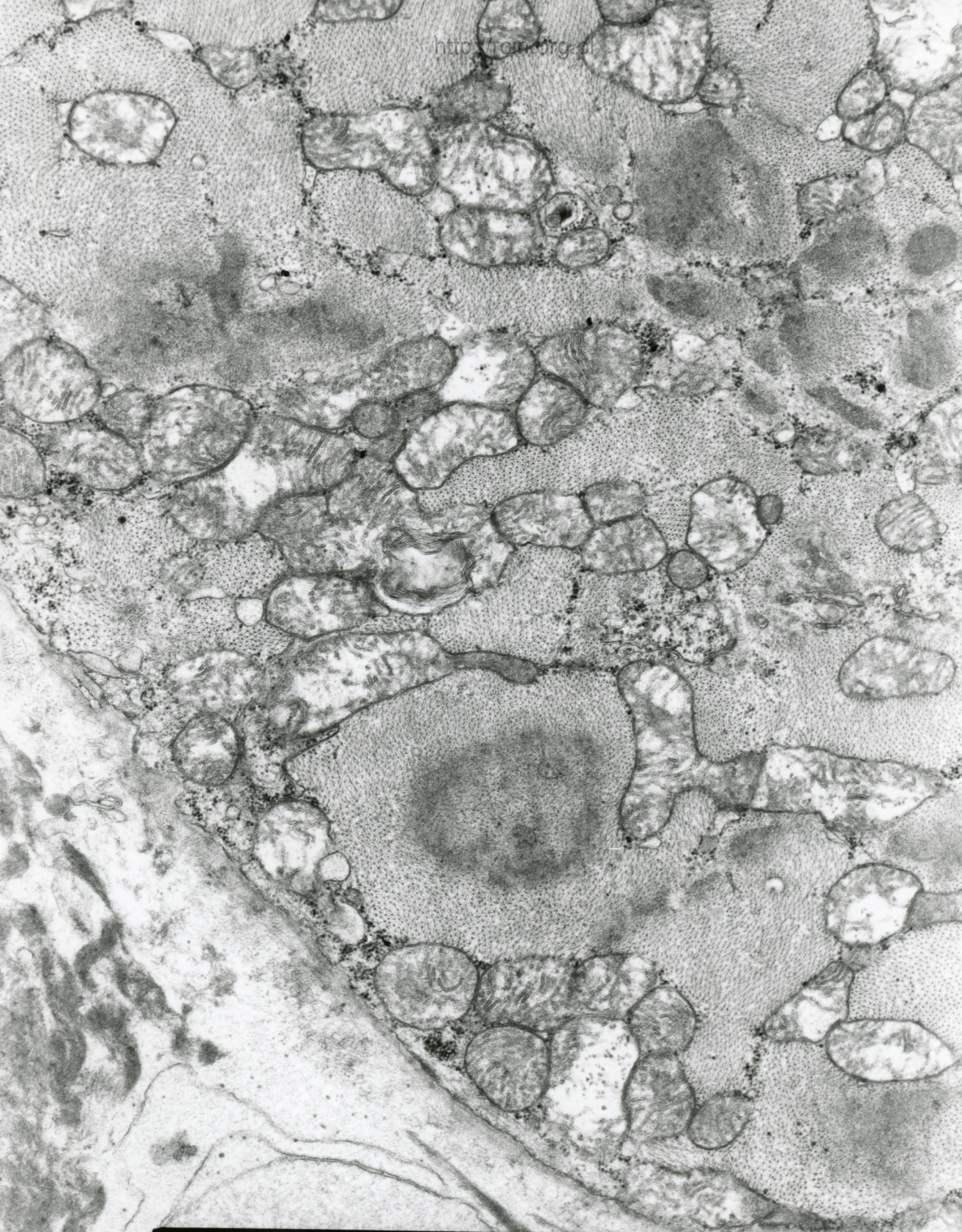


Fig. 8

42/04 serce

Analiza ultrastrukturalna wykazała obecność licznych ziaren glikogenu, zarówno w postaci rozproszonej (Fig. 1), jak otoczonych błoną (Fig. 2-4). Obecne były też wakuole (Fig.5). Obserwowano liczne mitochondria, charakteryzujące się często jasną macierzą i ubytkiem grzebieni (Fig.6-8).

Ultrastructural analysis revealed the presence of numerous glycogen granules, both free (Fig. 1) and surrounded by membranes (Figs. 2-4). Vacuoles were also present (Fig.5). Numerous mitochondria were observed, often characterized by a bright matrix and loss of mitochondrial cristae (Figs.6-8).