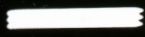
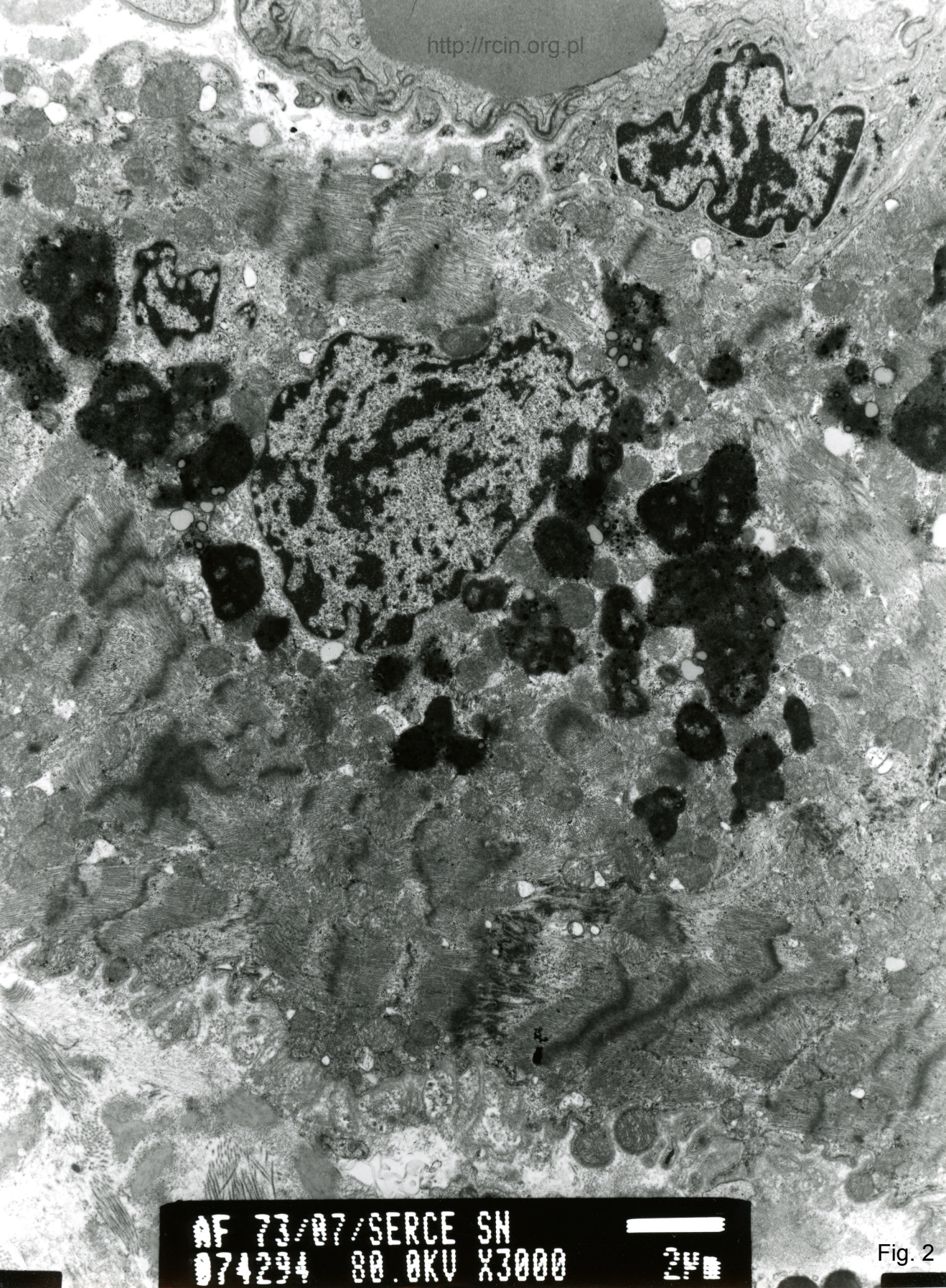


AF 73/07/SERCE SN
074296 80 OKU X3000

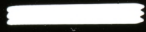


2µm

Fig. 1

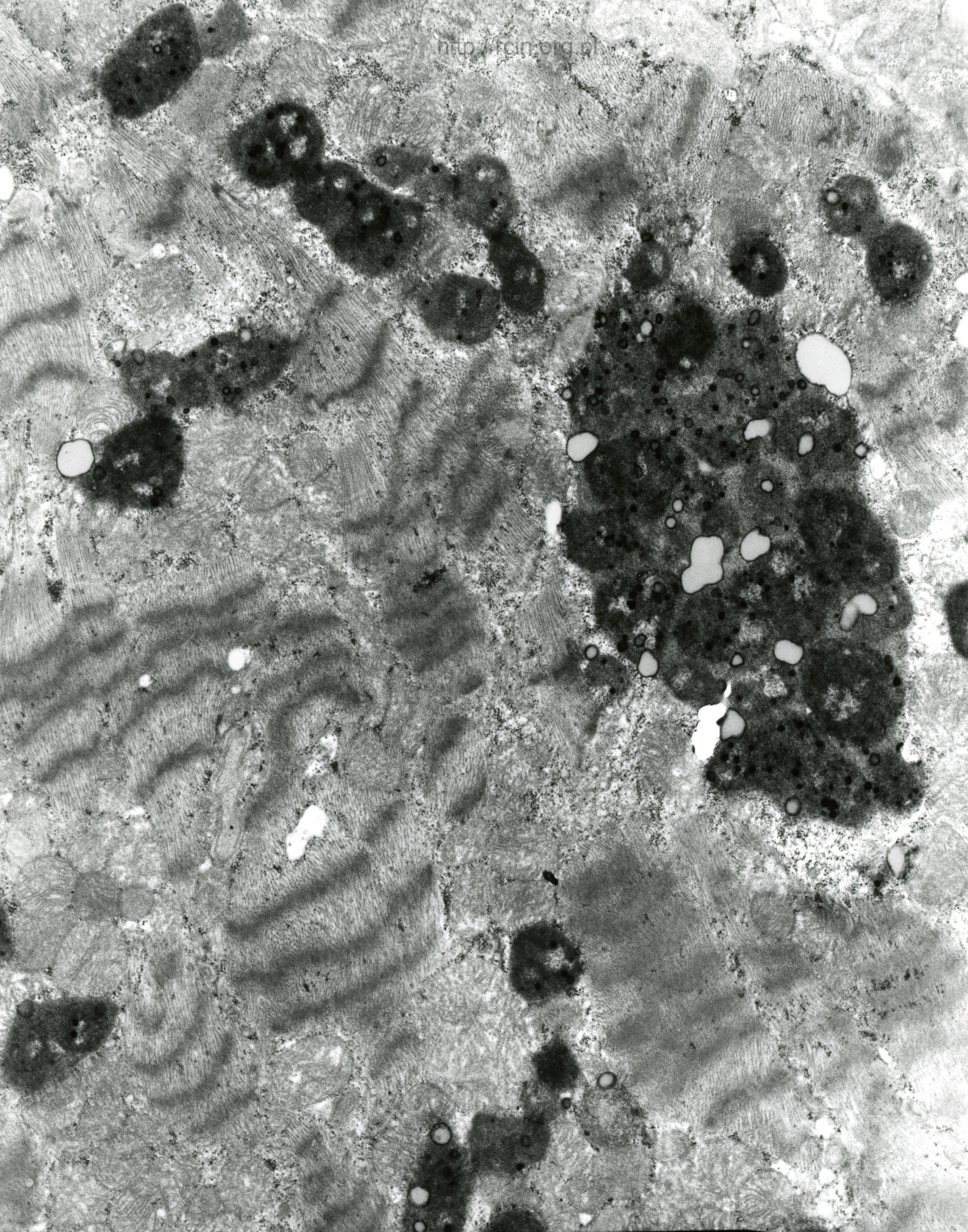


AF 73/07/SERCE SN
074294 80.0KV X3000

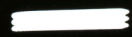


2µm

Fig. 2

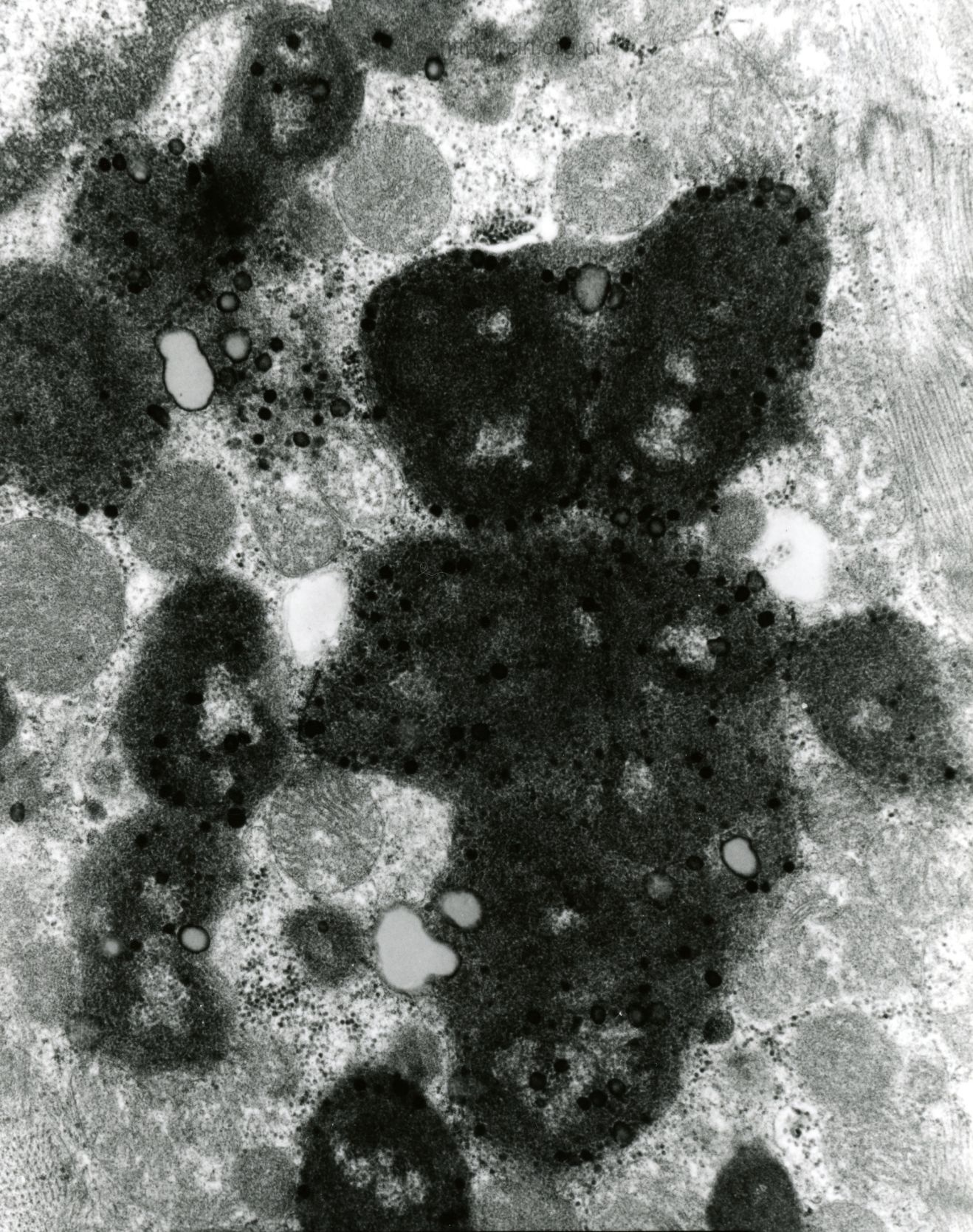


AF 7/20/07/SERCE SN
074203 80 0KV X5000



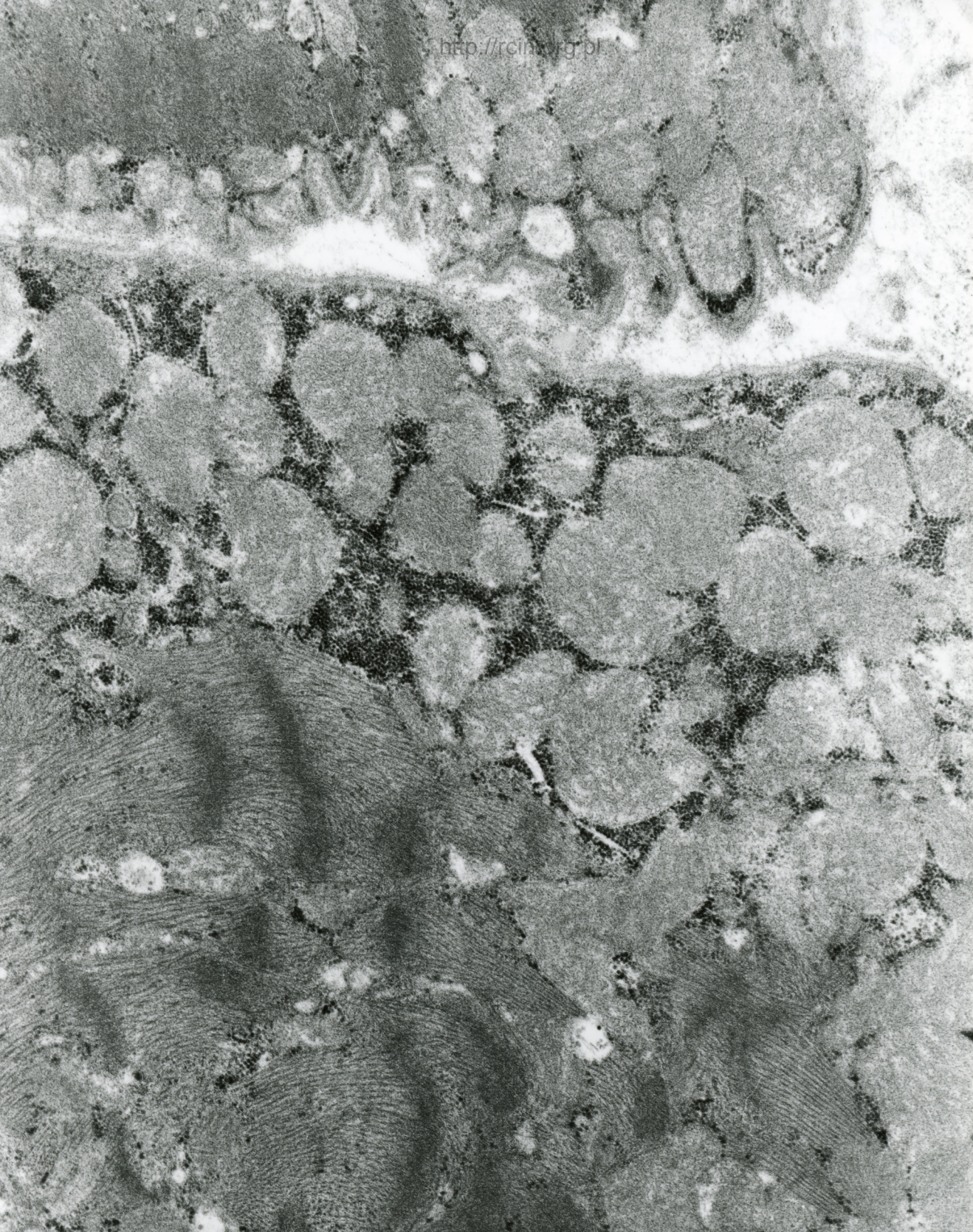
1 μm

Fig. 3



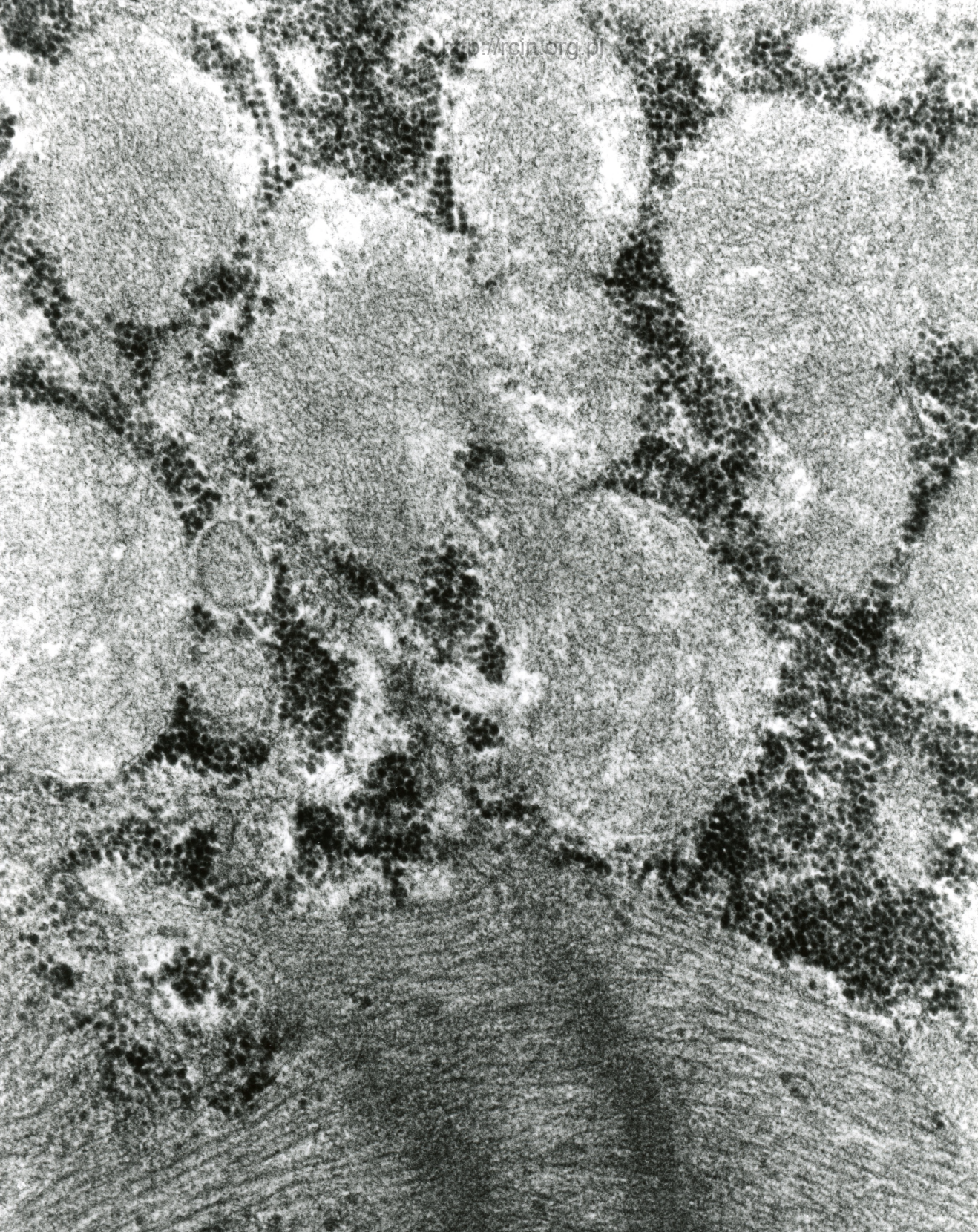
AF 73/07/SERCE SN
074295 80.0KV X12K 500nm

Fig. 4



AF 73/07/SERCE SN
074291 80.0KV X10K 500nm

Fig. 5



AF 73/07/SERCE SN
074292 80.0KV X25K 200nm

Fig. 6

73/07 serce

Analiza elektronowo-mikroskopowa wykazała znaczne nagromadzenie lipofuscyny, w szczególności w pobliżu jąder kardiomiocytów (Fig. 1-4). Pod sarkolemmą dość obficie występowały ziarna glikogenu. Obserwowano zmienione mitochondria o całkowicie zatartej strukturze grzebieni (Fig. 5,6).

Electron-microscopic analysis revealed a considerable accumulation of lipofuscin, particularly in the vicinity of cardiomyocyte nuclei (Figs. 1-4). Under the sarcolemma quite abundant glycogen granules were seen. Altered mitochondria with completely blurred structure of mitochondrial cristae were observed (Figs. 5,6).