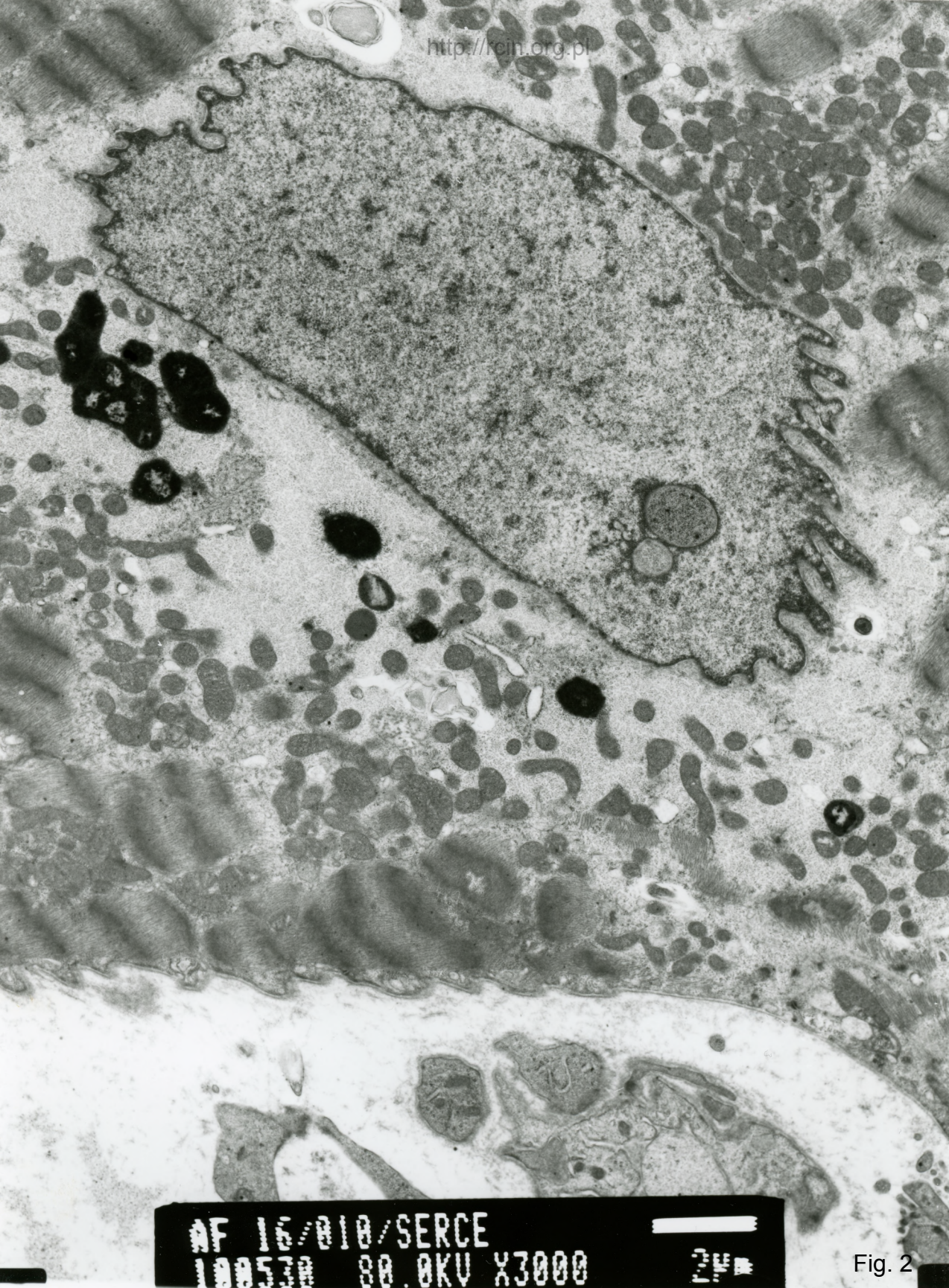


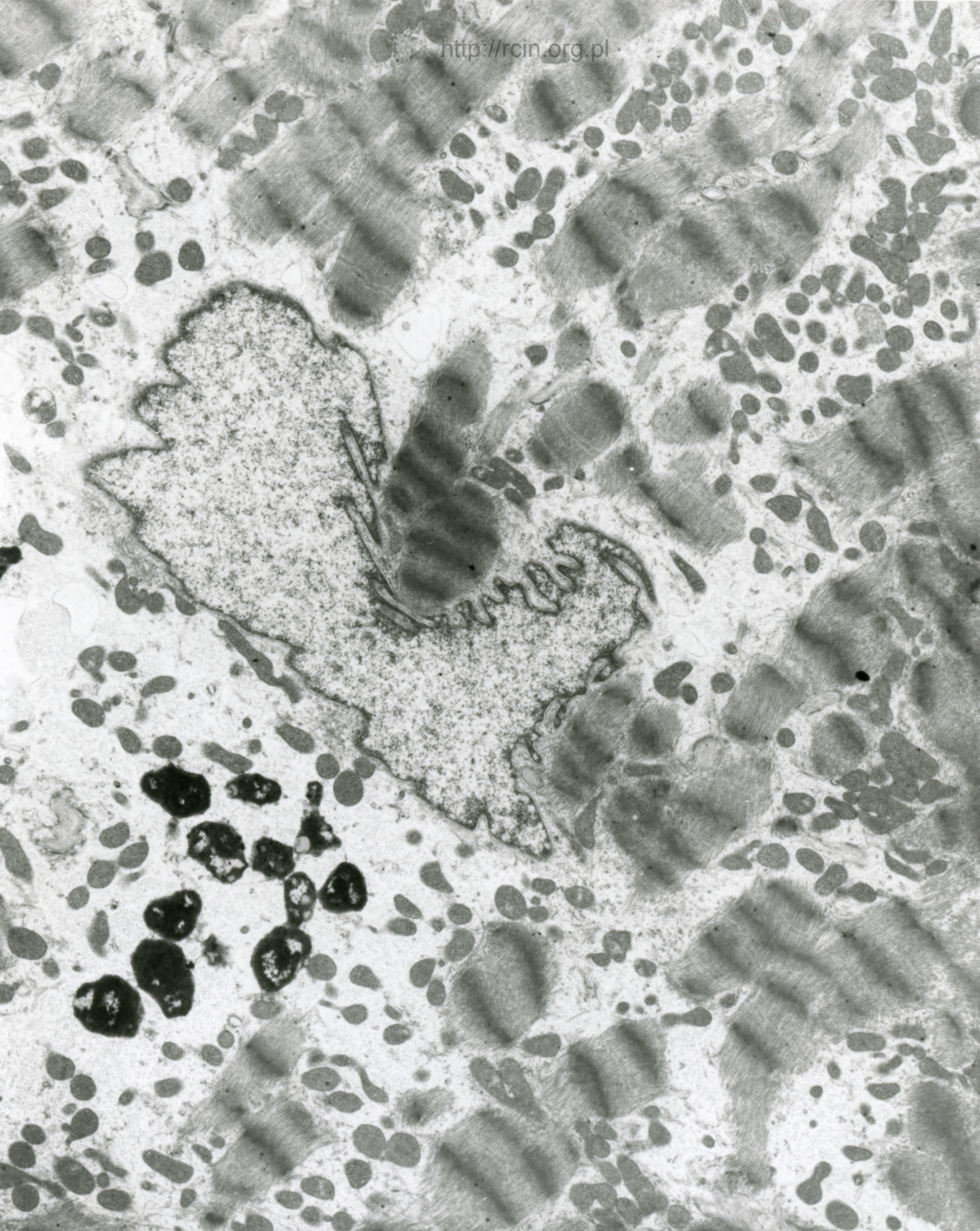
AF 16/010/SERCE
100533 80.0KV X3000 24

Fig. 1



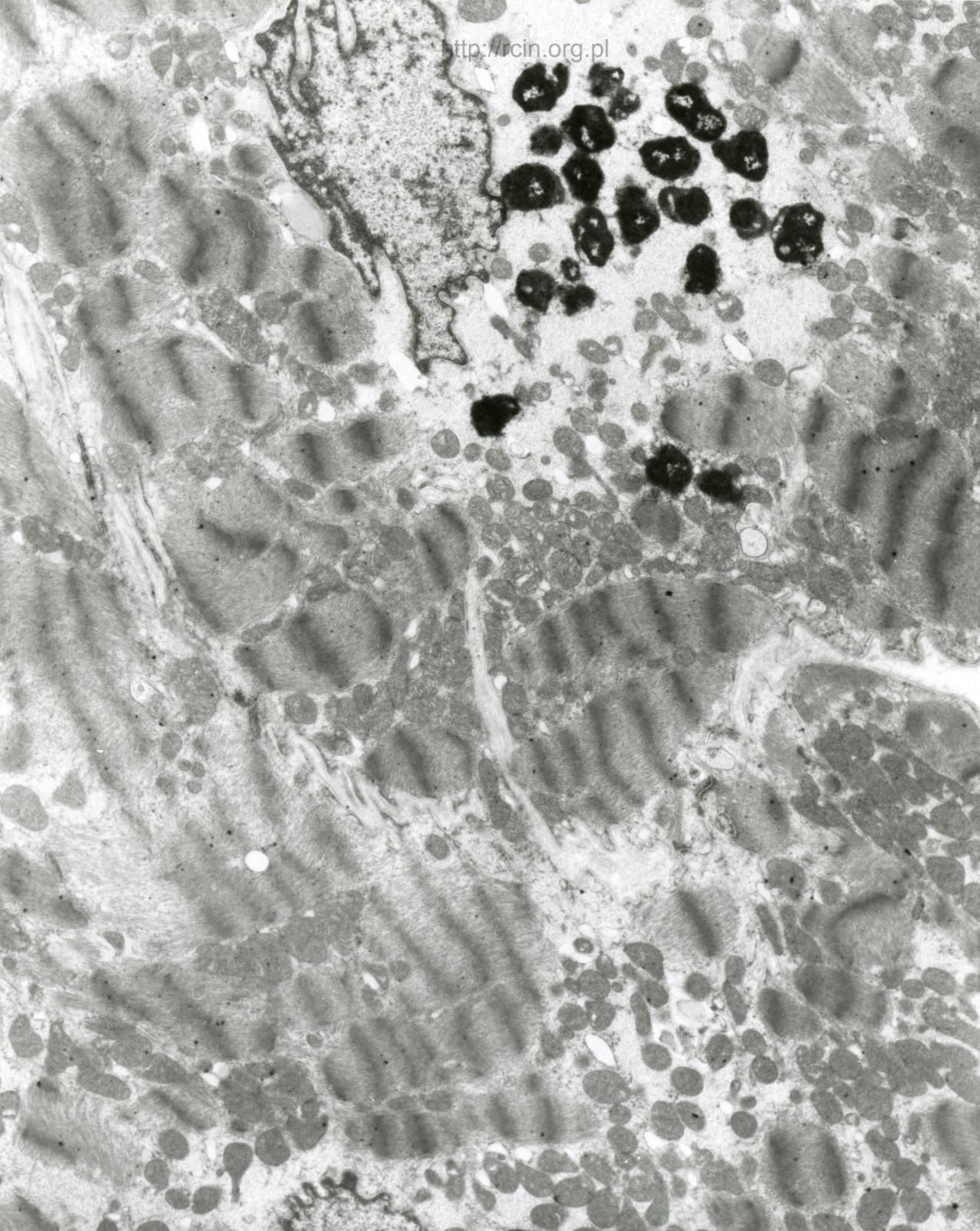
AF 16/010/SERCE
100530 80.0KV X3000

Fig. 2



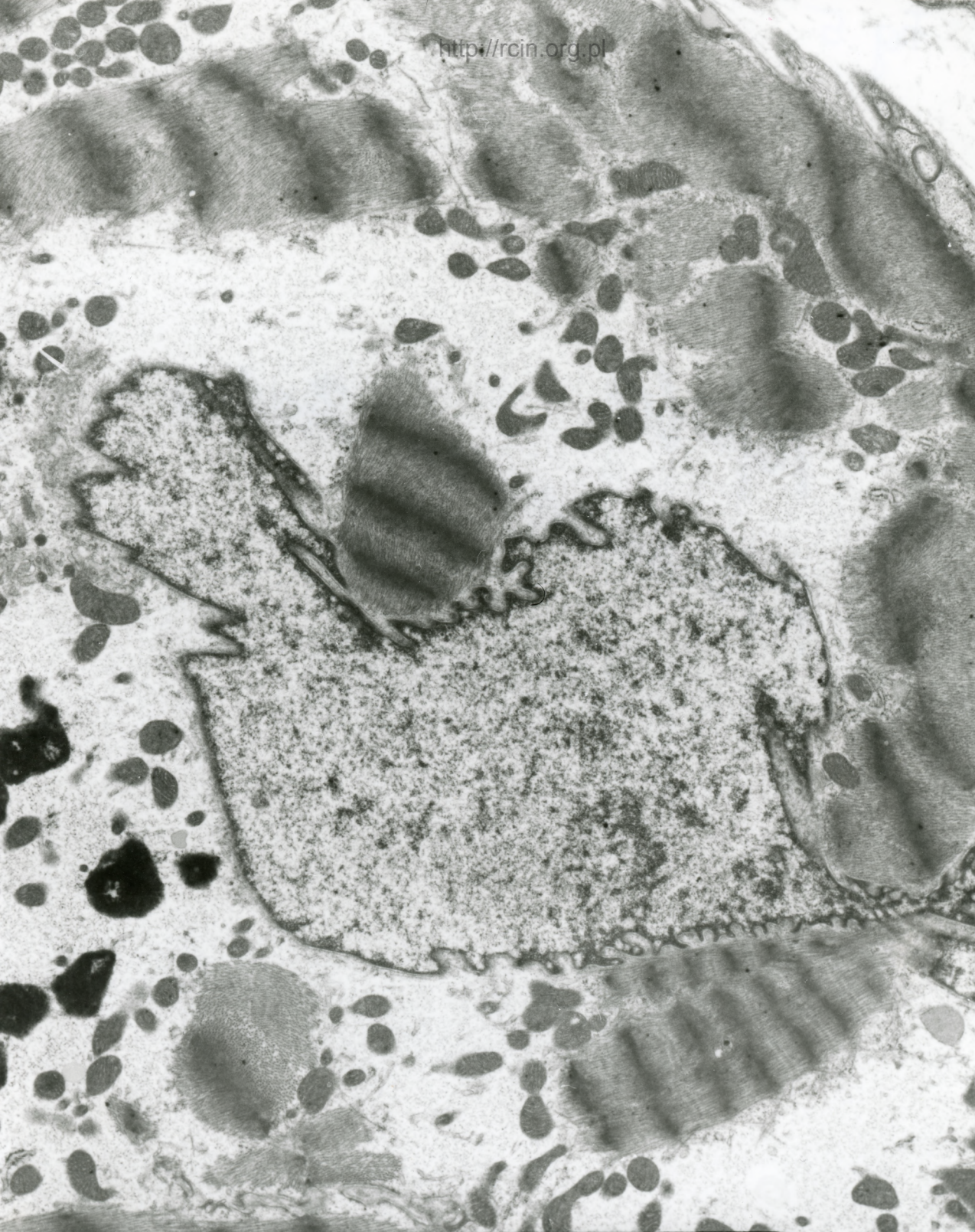
AF 16/010/SERCE
100534 80.0KV X3000 2µm

Fig. 3



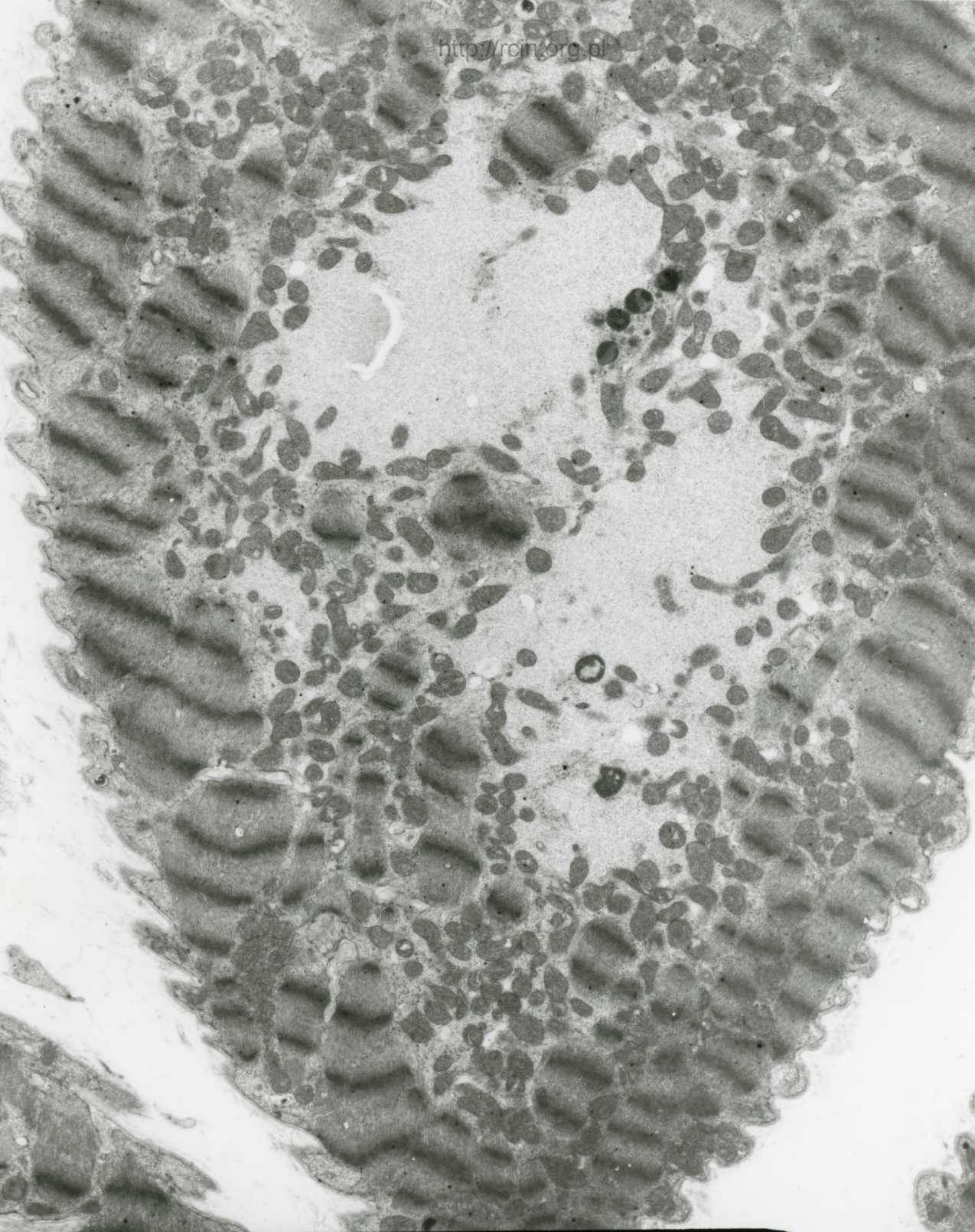
AF 16/010/SERCE
100532 80.0KV X3000 240

Fig. 4



AF 16/010/SERCE
100535 80.0KV X4000

Fig. 5



AF 16/010/SERCE
100531 80.0KV X2500 24

Fig. 6

16/10 serce

Analiza ultrastrukturalna wykazała zaburzenia w przebiegu miofibryli oraz ich dezorganizację, a miejscami, zwłaszcza w okolicy jąder kardiomiocytów całkowity zanik miofibryli. Struktura sarkomerów była zatarta. Jądra kardiomiocytów w większości prawidłowe, o nieco pofałdowanej otoczce jądrowej. W pobliżu jąder obserwowano złogi lipofuscyny (Fig. 1-6).

Ultrastructural analysis revealed myofibrillar disruption and disorganization, and focally, especially in the region of cardiomyocyte nuclei, a complete atrophy of myofibrils. The sarcomeric structure was blurred. Cardiomyocyte nuclei were mostly unchanged, with slightly corrugated nuclear envelope. Lipofuscin deposits were observed in the vicinity of nuclei (Figs. 1-6).