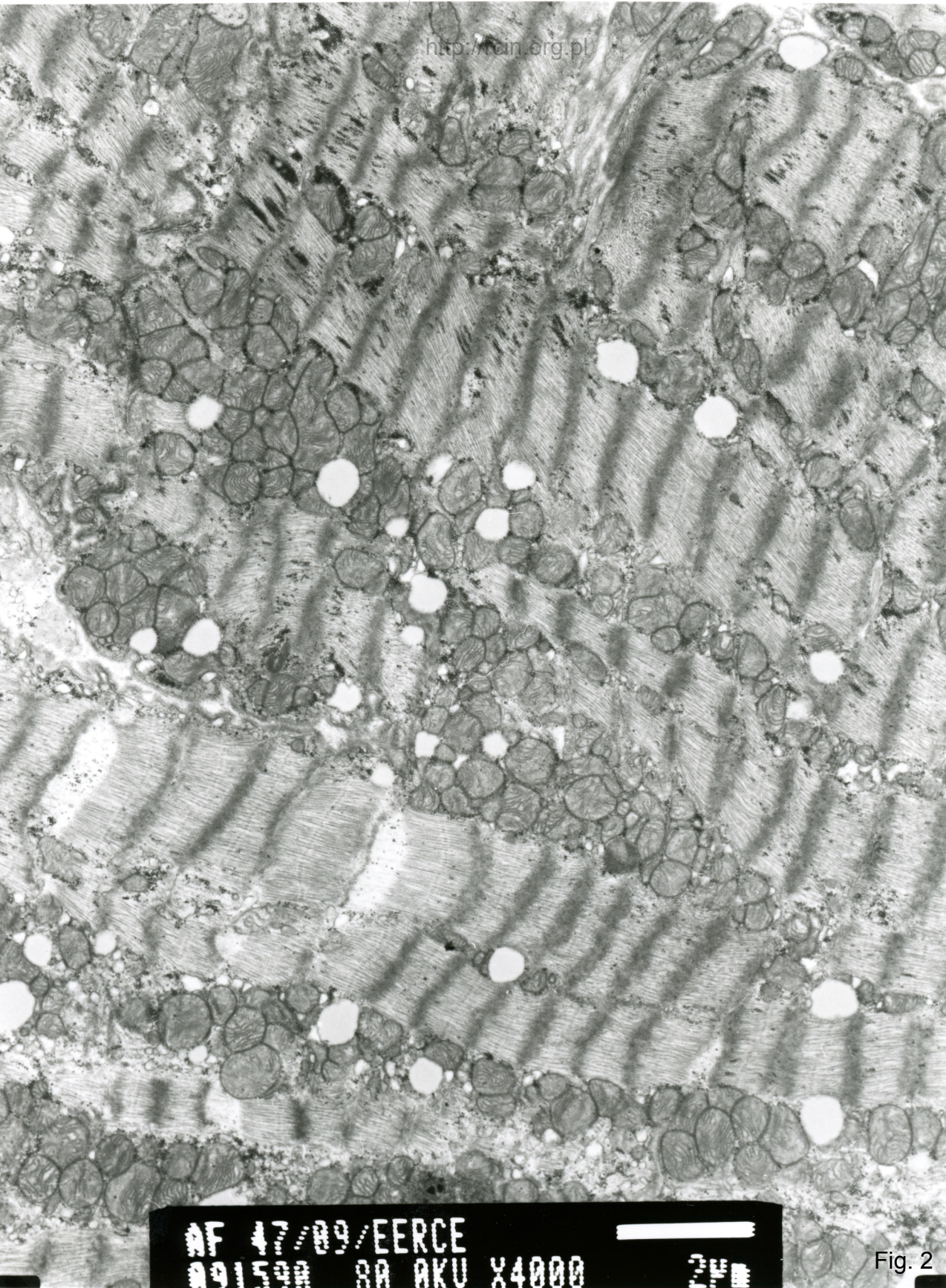


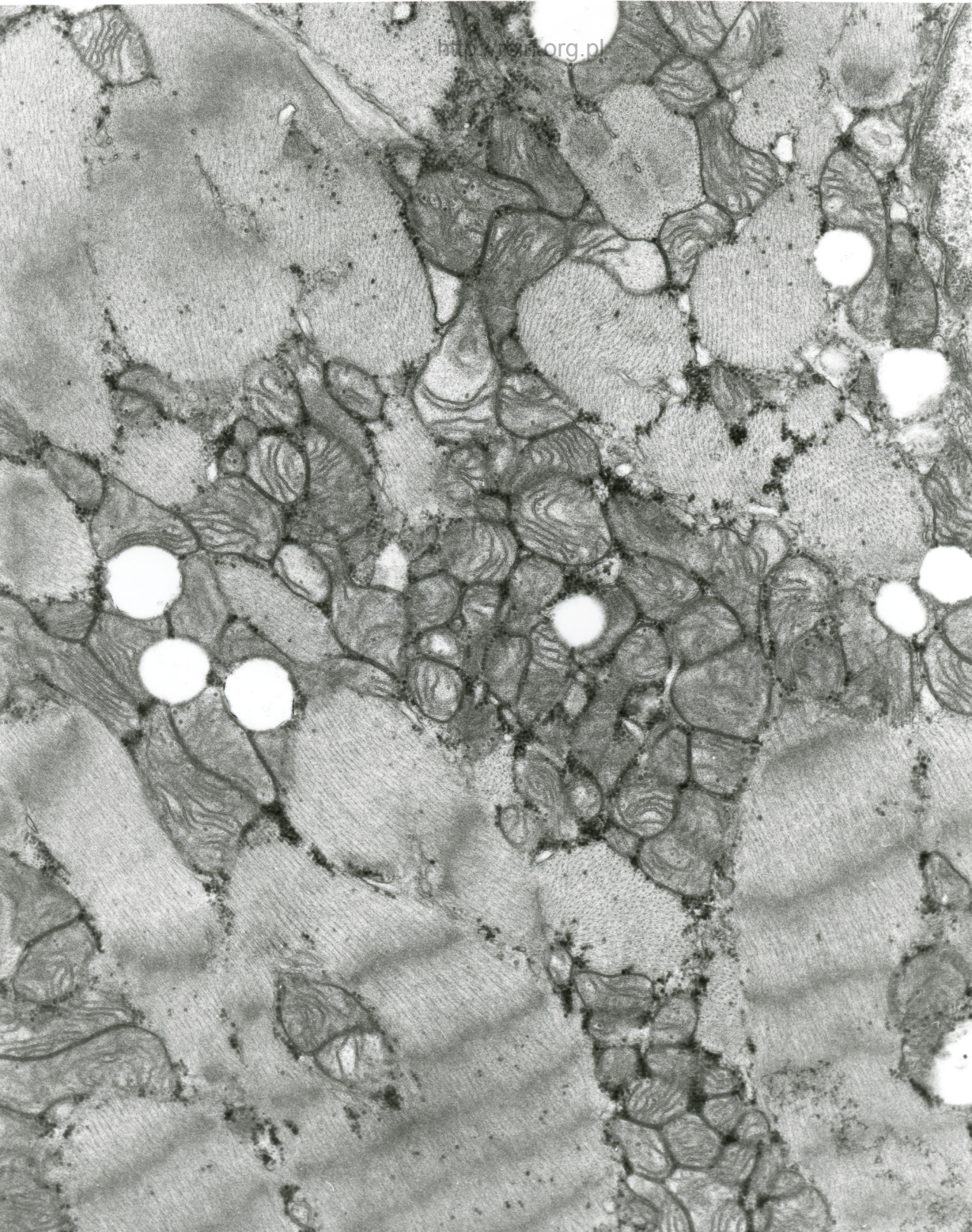
AF 47/09/EERCE
001520 00 0K11 Y4000

Fig. 1



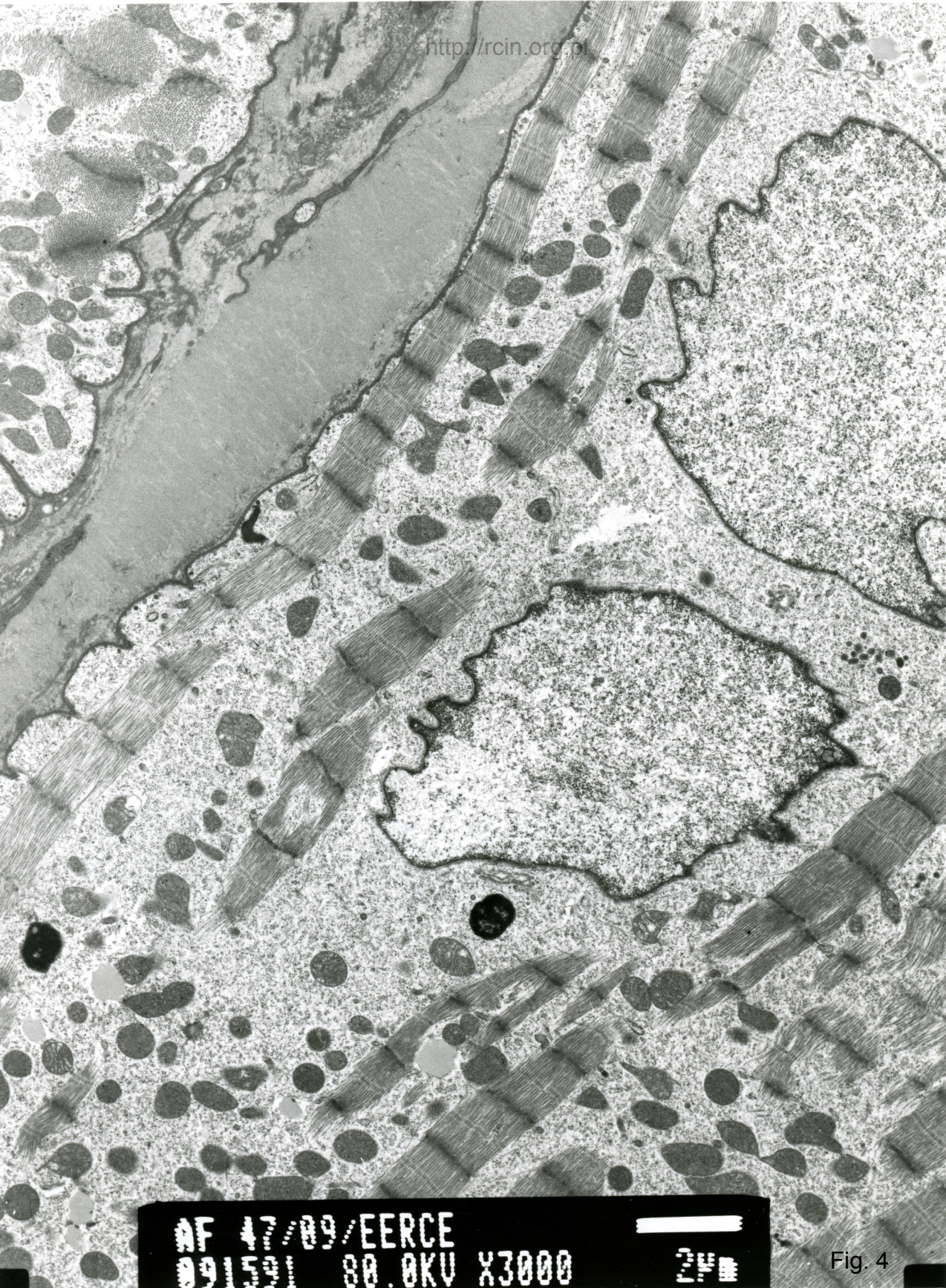
AF 47/09/EERCE
091590 8A AKU X4000 2µm

Fig. 2



AF 47/09/EERCE
091507 80.0KV X7500

Fig. 3



AF 17/09/EERCE
09/15/01 80.0KV X3000

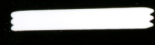
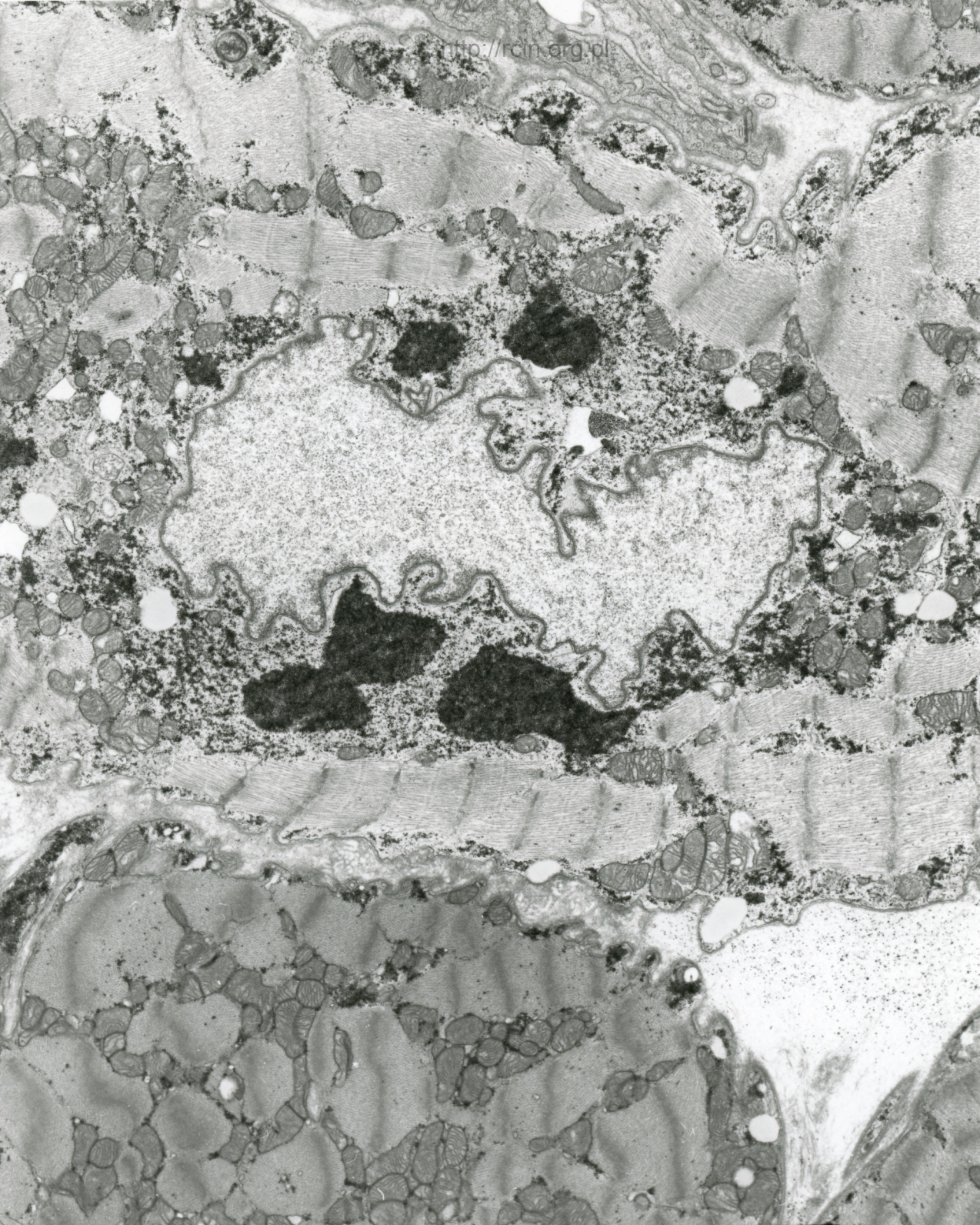
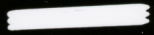


Fig. 4



AF 47/09/EERCE
091509 80.0KV X3000



2µm

Fig. 5

47/09 serce

Ocena ultrastrukturalna wykazała nieco zatartą strukturę sarkomerów oraz obecność kropli tłuszczu (Fig. 1-3). Obserwowano nieprawidłowości w przebiegu miofibrili oraz ich dezorganizację, a miejscowo zupełny zanik (Fig.4). W okolicach niektórych jąder kardiomiocytów widoczne były złogi glikogenu (Fig. 5)

Ultrastructural analysis revealed a slightly blurred sarcomere structure and the presence of fat droplets (Figs. 1-3). Changes in myofibrils arrangement, their disorganization and locally complete atrophy were observed (Fig.4). Focally, in the vicinity of some nuclei, glycogen deposits were seen (Fig. 5)