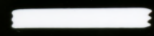


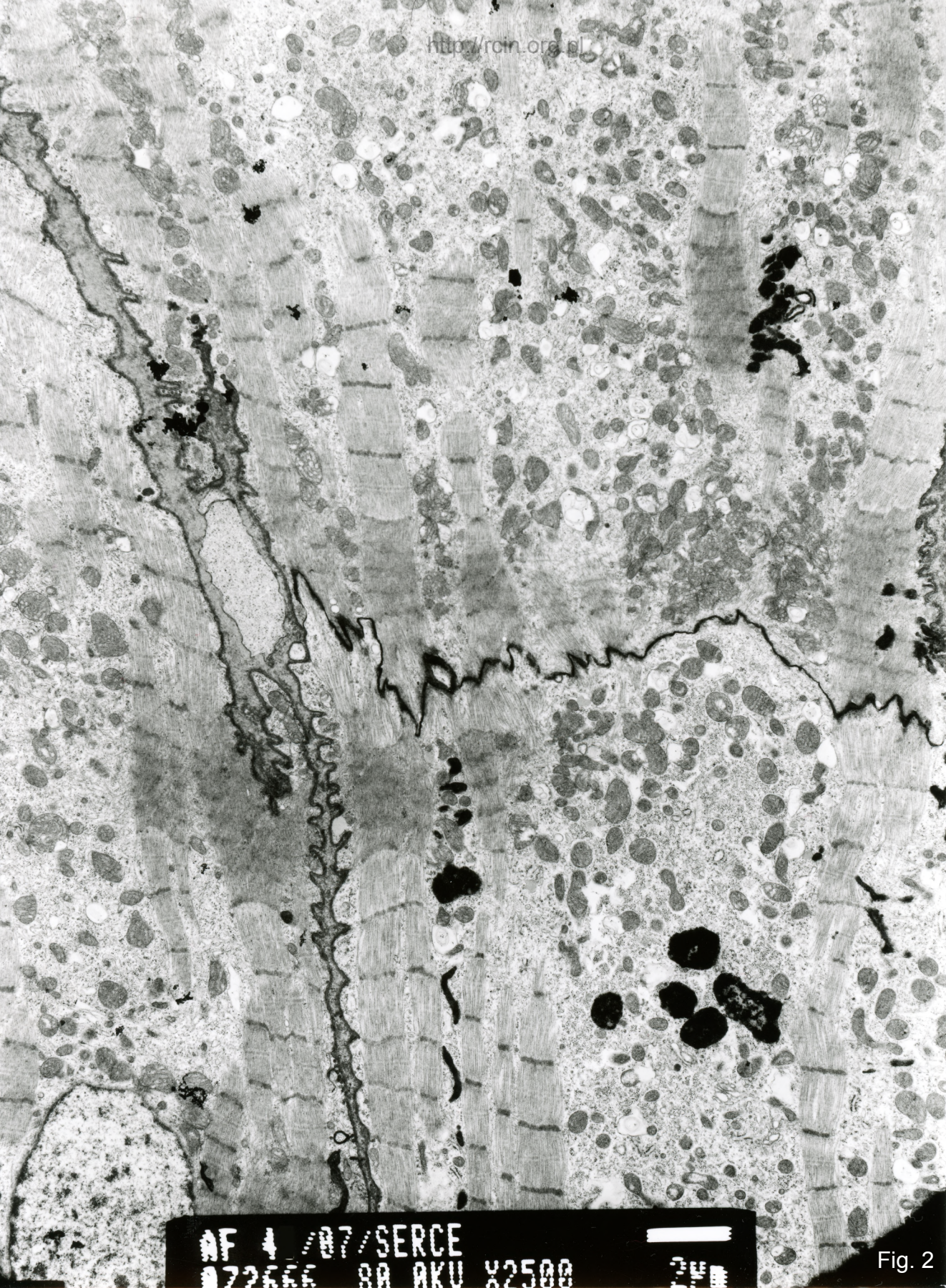


AF 46/07
084123 80.0KV X3000



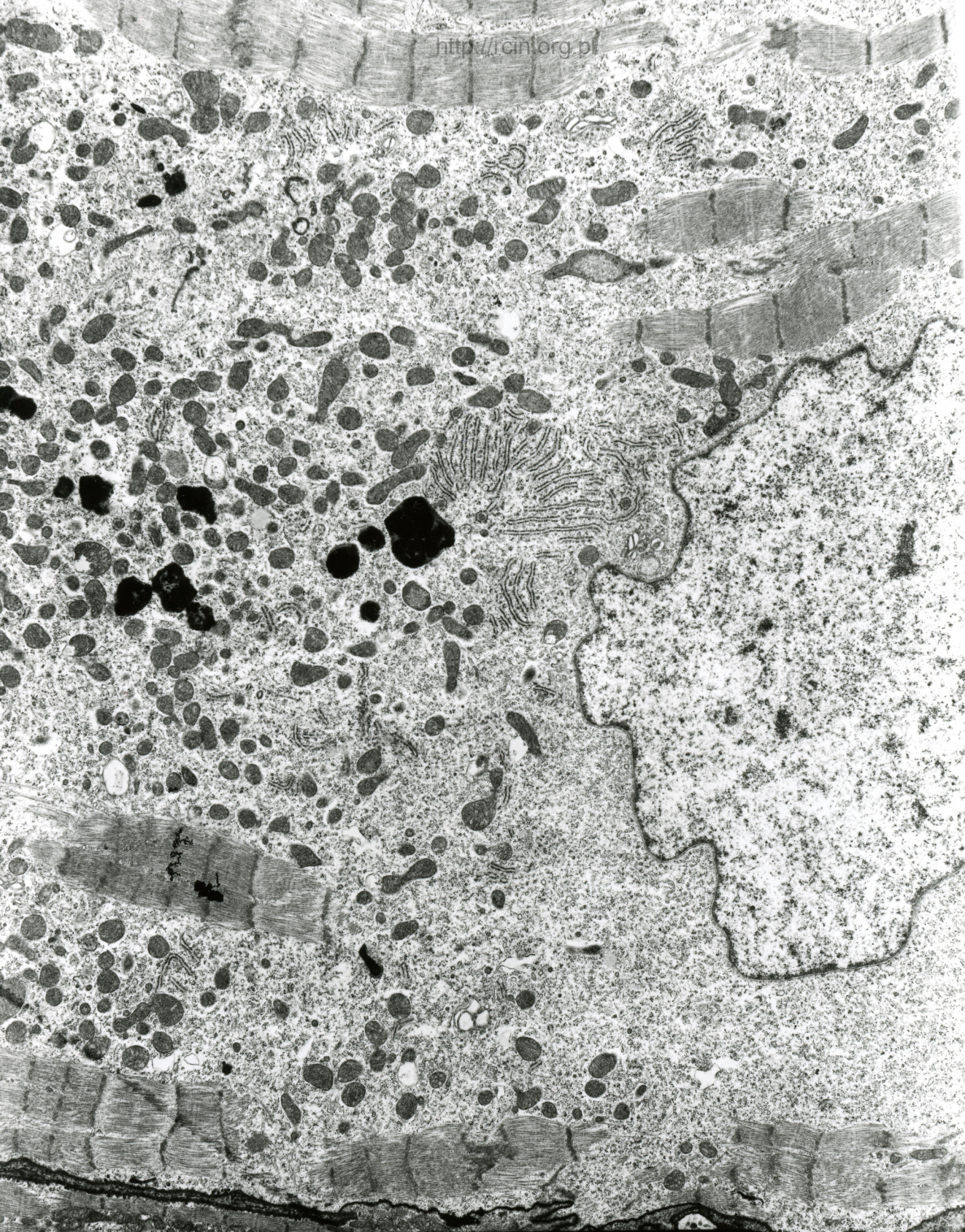
2µm

Fig. 1



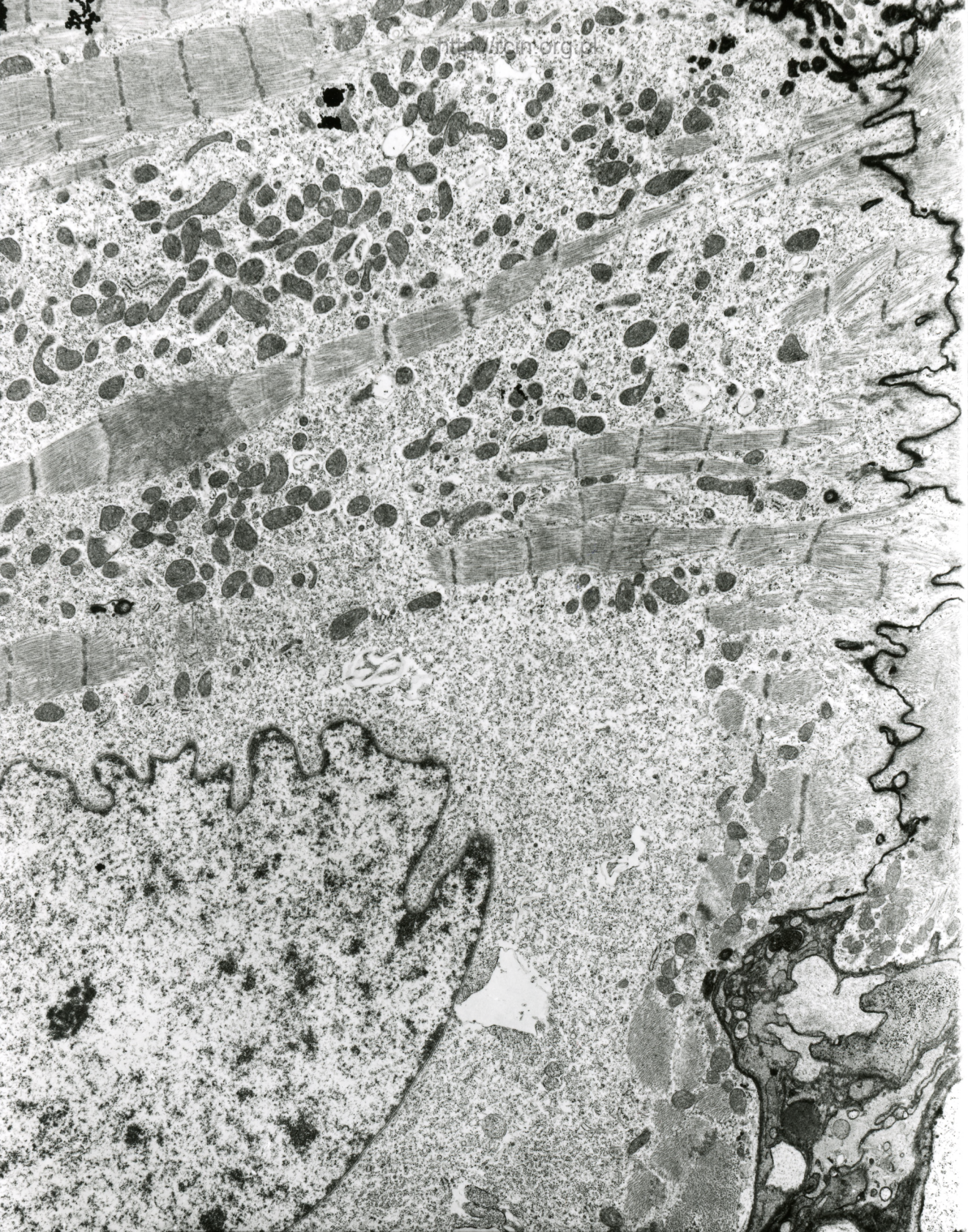
AF 4 /07/SERCE
072666 BA AKU X2500

Fig. 2



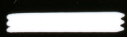
AF 4 / 07 / SERCE
072657 RR OKU X2500

Fig. 3



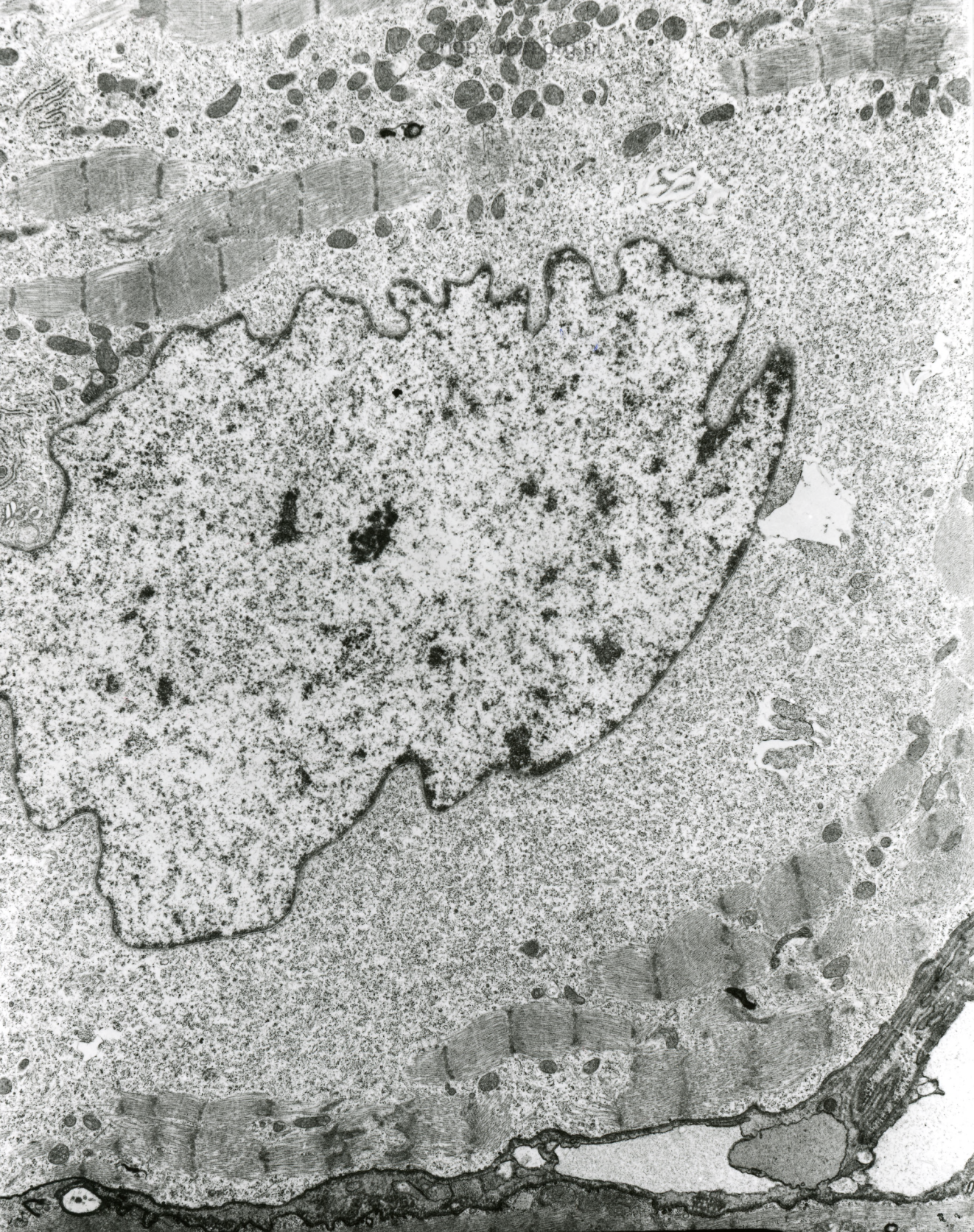
http://www.orgid

AF 1 /07/SERCE
072670 80.0KV X2500



2.5 μm

Fig. 4



AF 4 /07/SERCE
072660 80.0KV X2500 2µm

Fig. 5

46/07

Analiza ultrastrukturalna wykazała zmiany w przebiegu miofibryli w niektórych kardiomiocytach (Fig.1). W większości kardiomiocytów miofibryle były przerwane (Fig. 2-5). Na obszarach sarkoplazmy pozbawionych miofibryli obecne były liczne mitochondria, najczęściej o zmienionym kształcie i zatartej strukturze oraz jądra komórkowe charakteryzujące się nieregularnym kształtem

Ultrastructural analysis revealed changes in the course of myofibrils in some cardiomyocytes (Fig.1). In most cardiomyocytes, myofibrils were disrupted (Figs. 2-5). In the areas of sarcoplasm devoid of myofibrils, numerous mitochondria and cell nuclei, characterized by altered shape, were present. Mitochondria had blurred structure