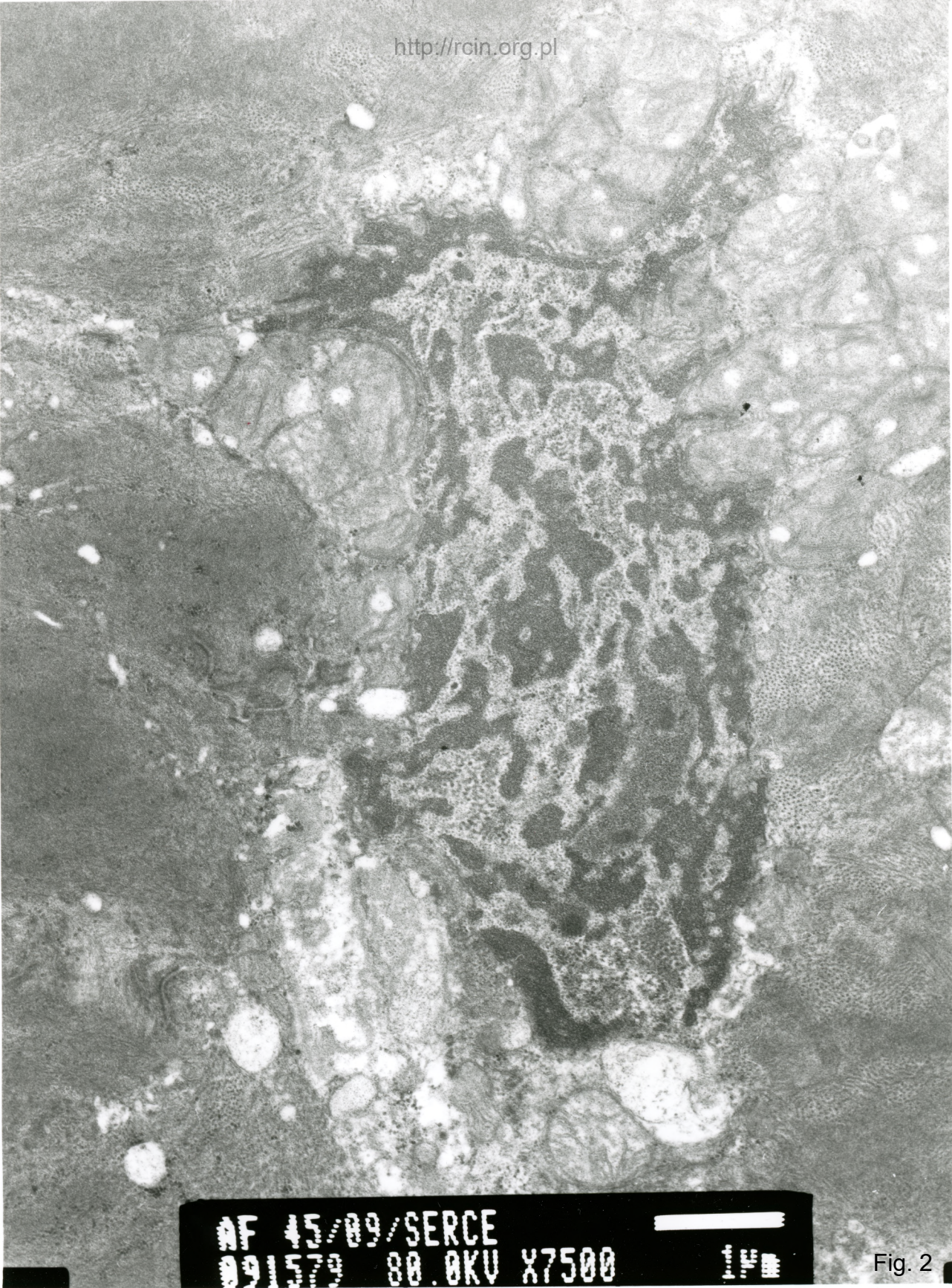


AF 45/09/SERCE
091576 80.0KV X12K 500nm

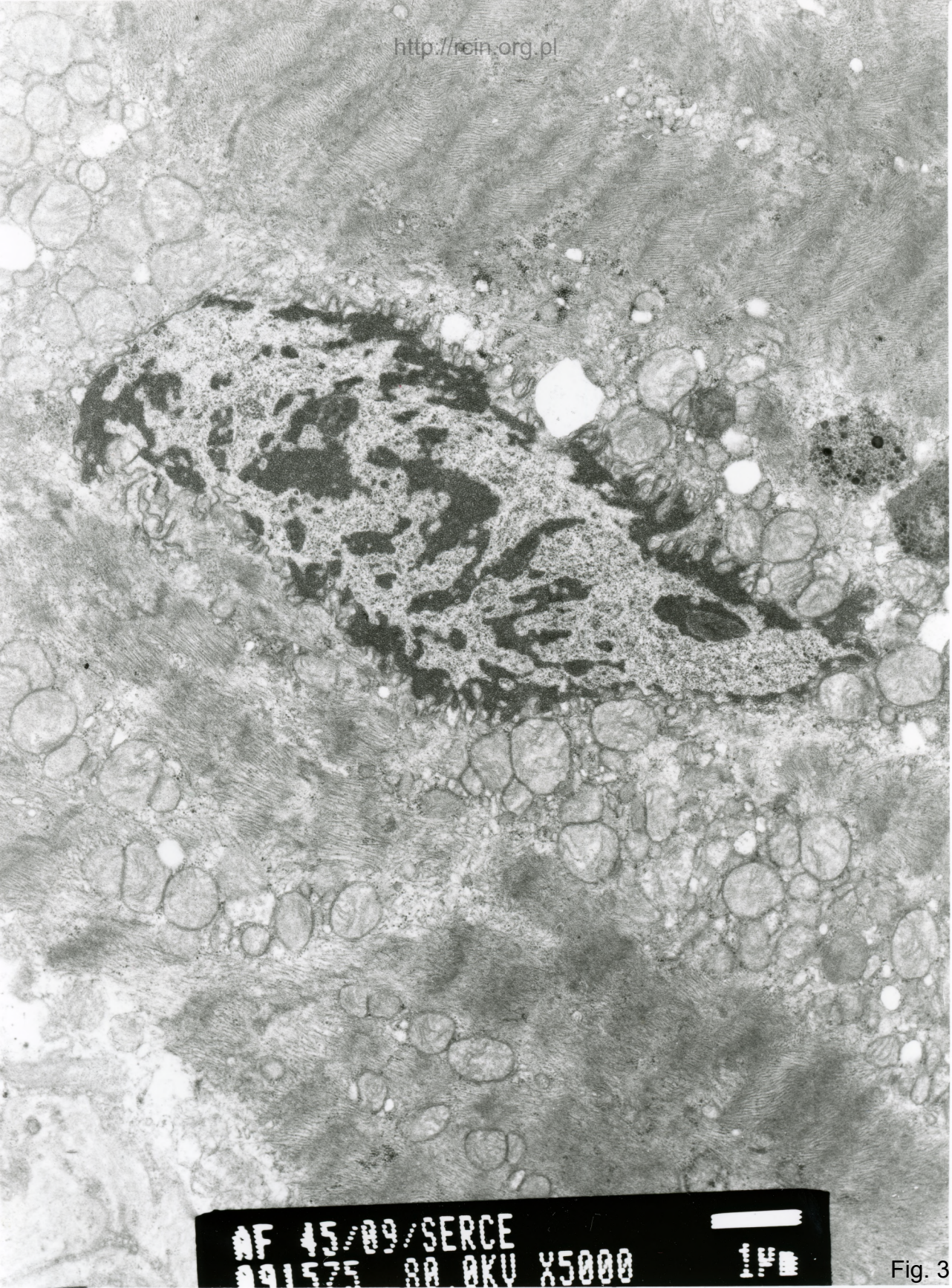
Fig. 1



MF 45/89/SERCE
091579 80.0KV X7500



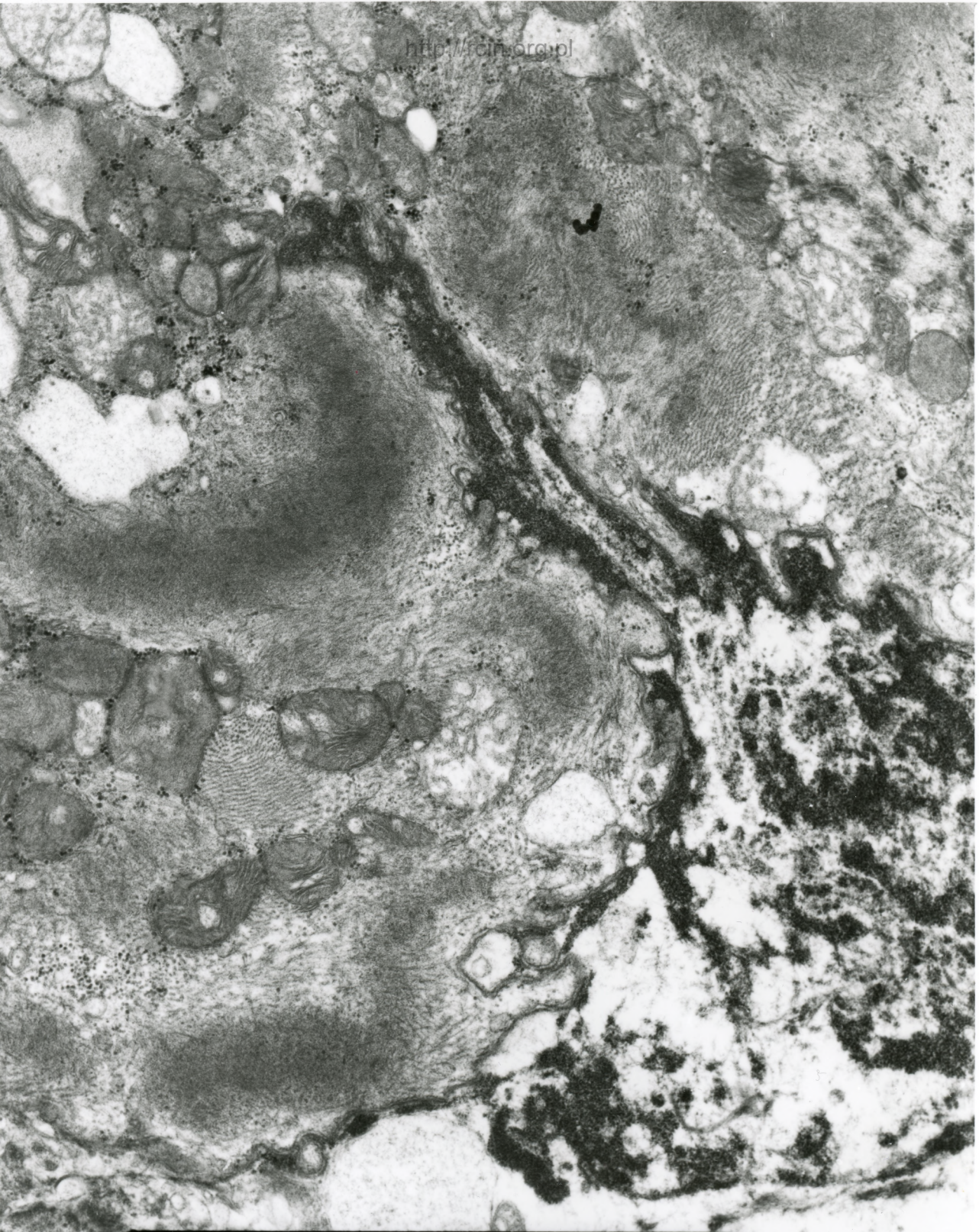
Fig. 2



AF 45/09/SERCE
091575 BA BKV X5000



Fig. 3



AF 45/09/SERCE
091945 80.0KV X7500

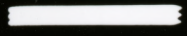
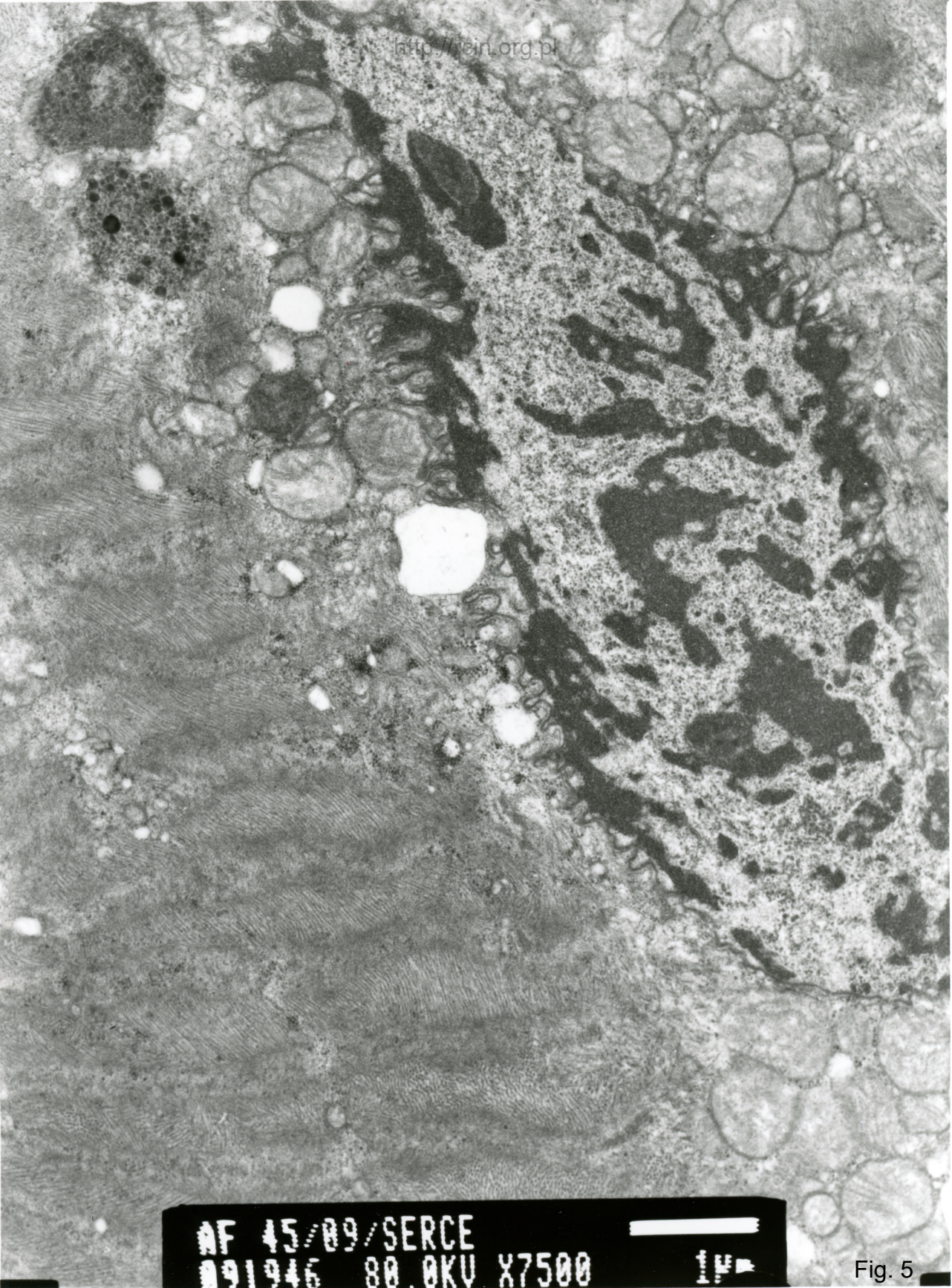
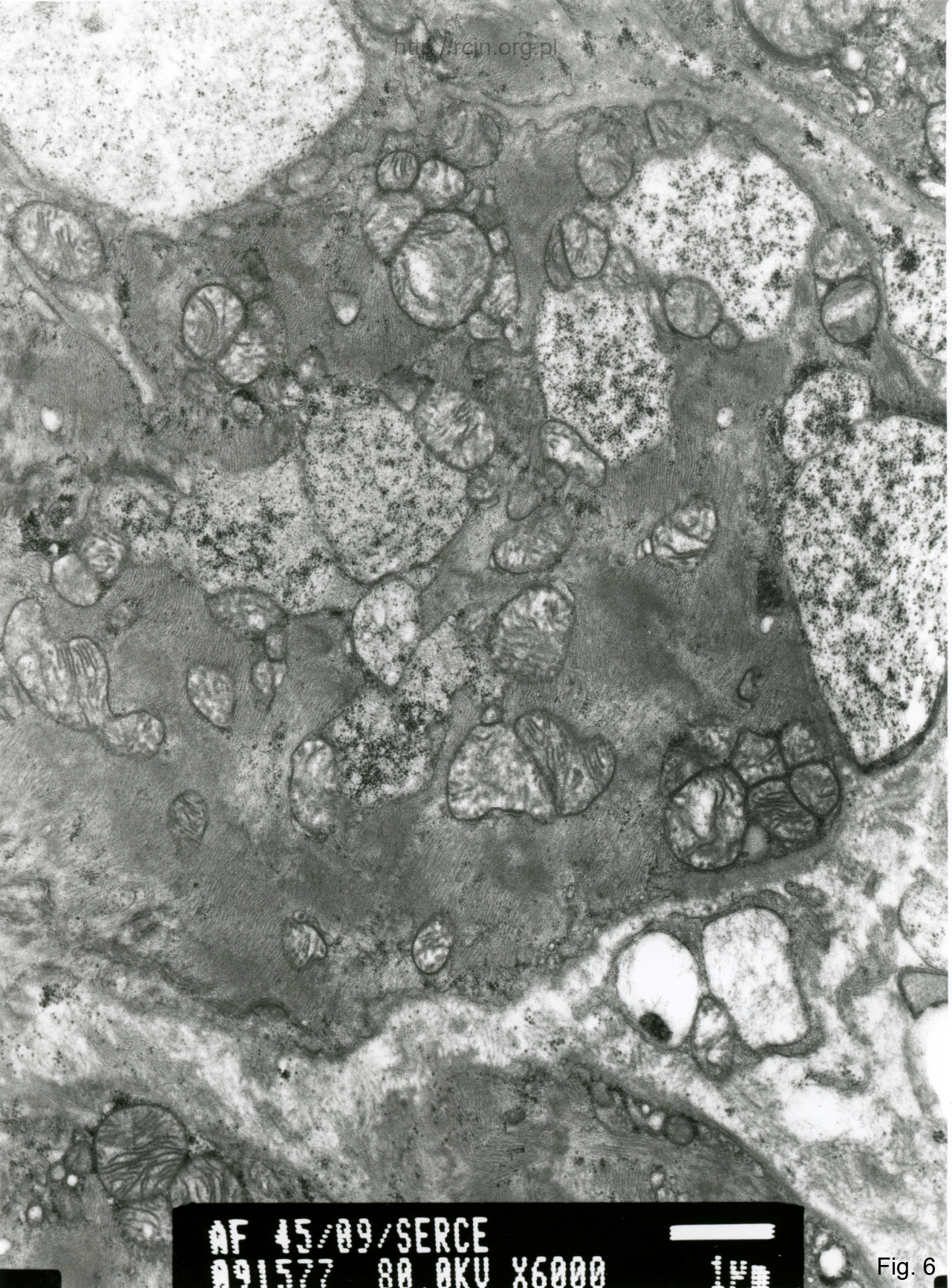


Fig. 4



AF 45/09/SERCE
091946 80.0KV X7500 1µ

Fig. 5



AF 45/09/SERCE
091577 80.0KV X6000

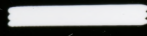


Fig. 6

45/09

Analiza ultrastrukturalna wykazała zmiany w jądrach kardiomiocytów. Posiadały one nieregularny kształt, liczne wgłobienia i ogniskowo przerwane otoczki (Fig. 1-3). Mitochondria w sąsiedztwie tak zmienionych jąder pozbawione były grzebieni (Fig. 4-6).

Electronmicroscopy analysis revealed changes in the cardiomyocytes nuclei ultrastructure. The nuclei were irregularly shaped, with numerous indentations, and focally breaks in the nuclear membrane were observed (Figs. 1-3). Mitochondria in the vicinity of such altered nuclei were devoid of mitochondrial cristae (Figs. 4-6).