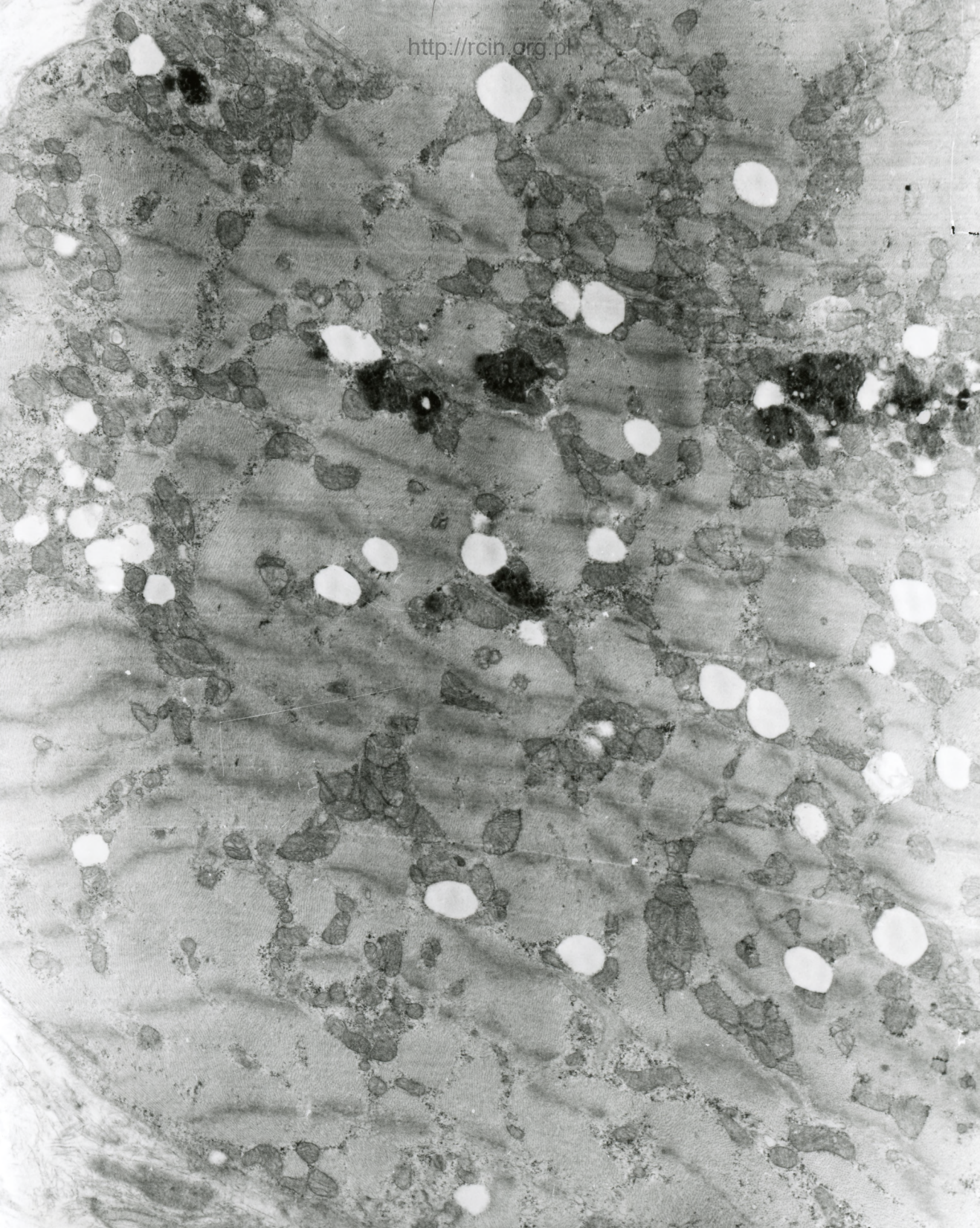


AF 2/07/SERCE
070300 80.0KV X3000

Fig. 1



MF 2/07/SERCE
070000 00.0KV X3000

Fig. 2



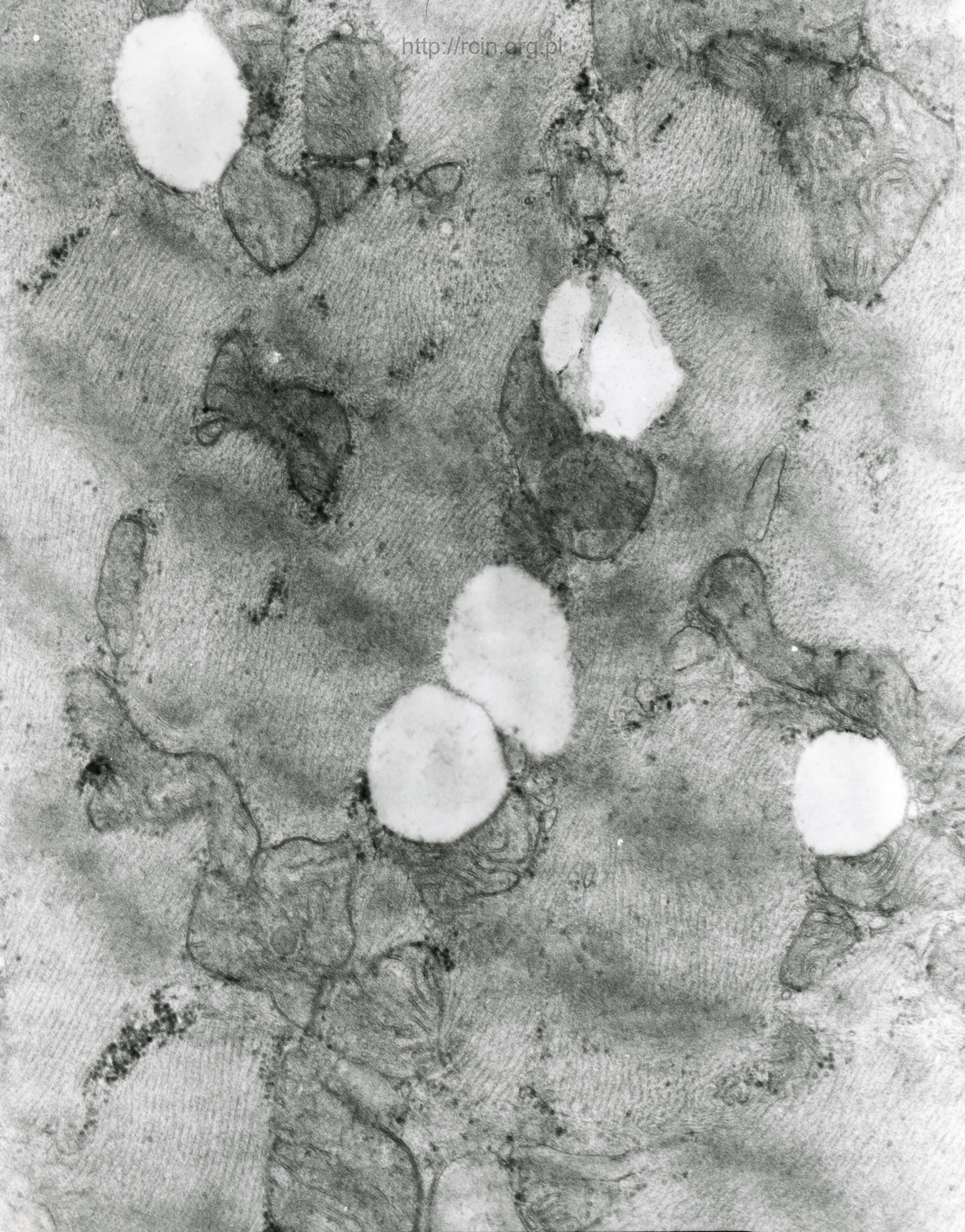
AF 070107/SERCE
070107 80.0KV X3000 2V

Fig. 3



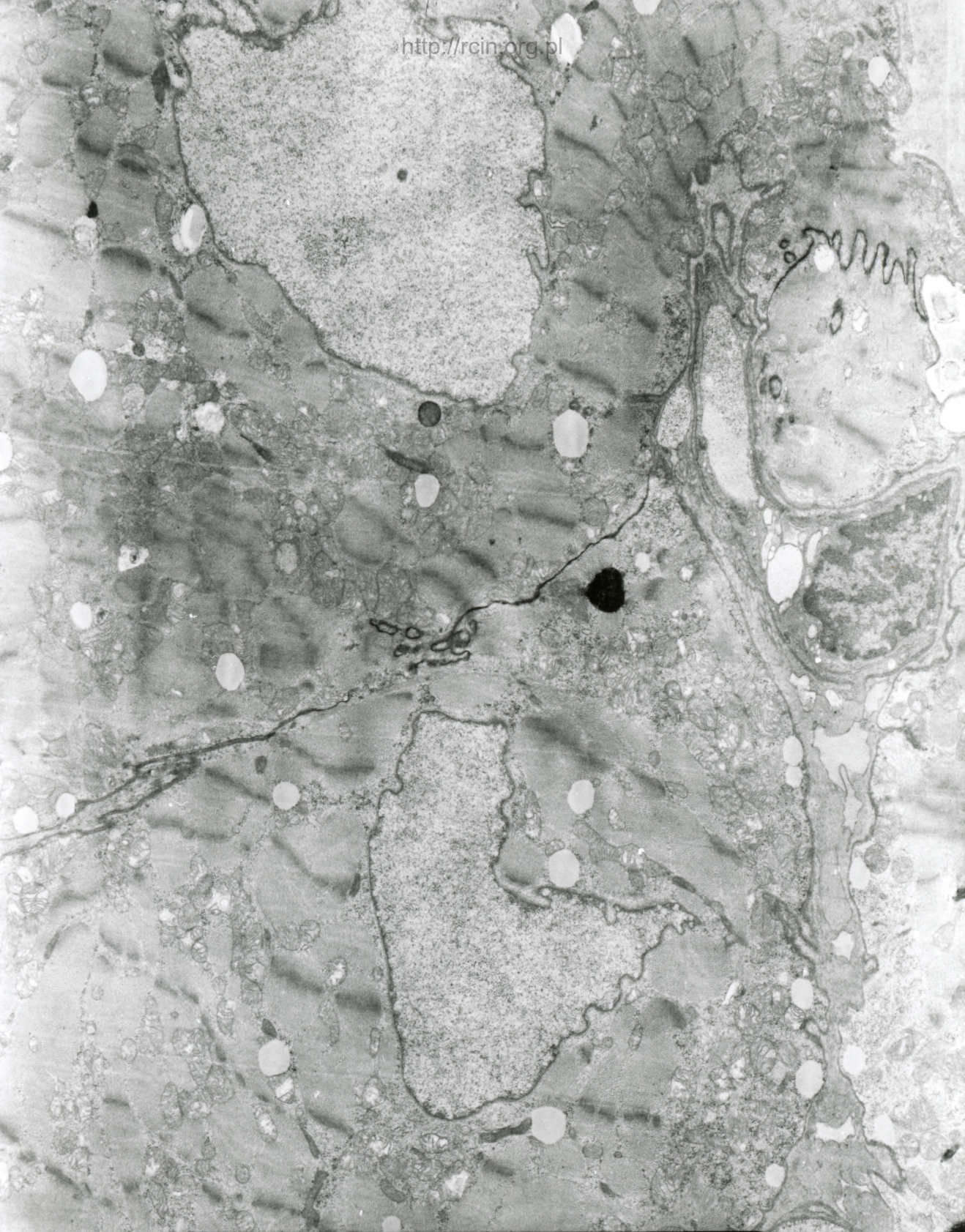
AF 2/07/SERCE
070 JUN 88 AKU X2500

Fig. 4



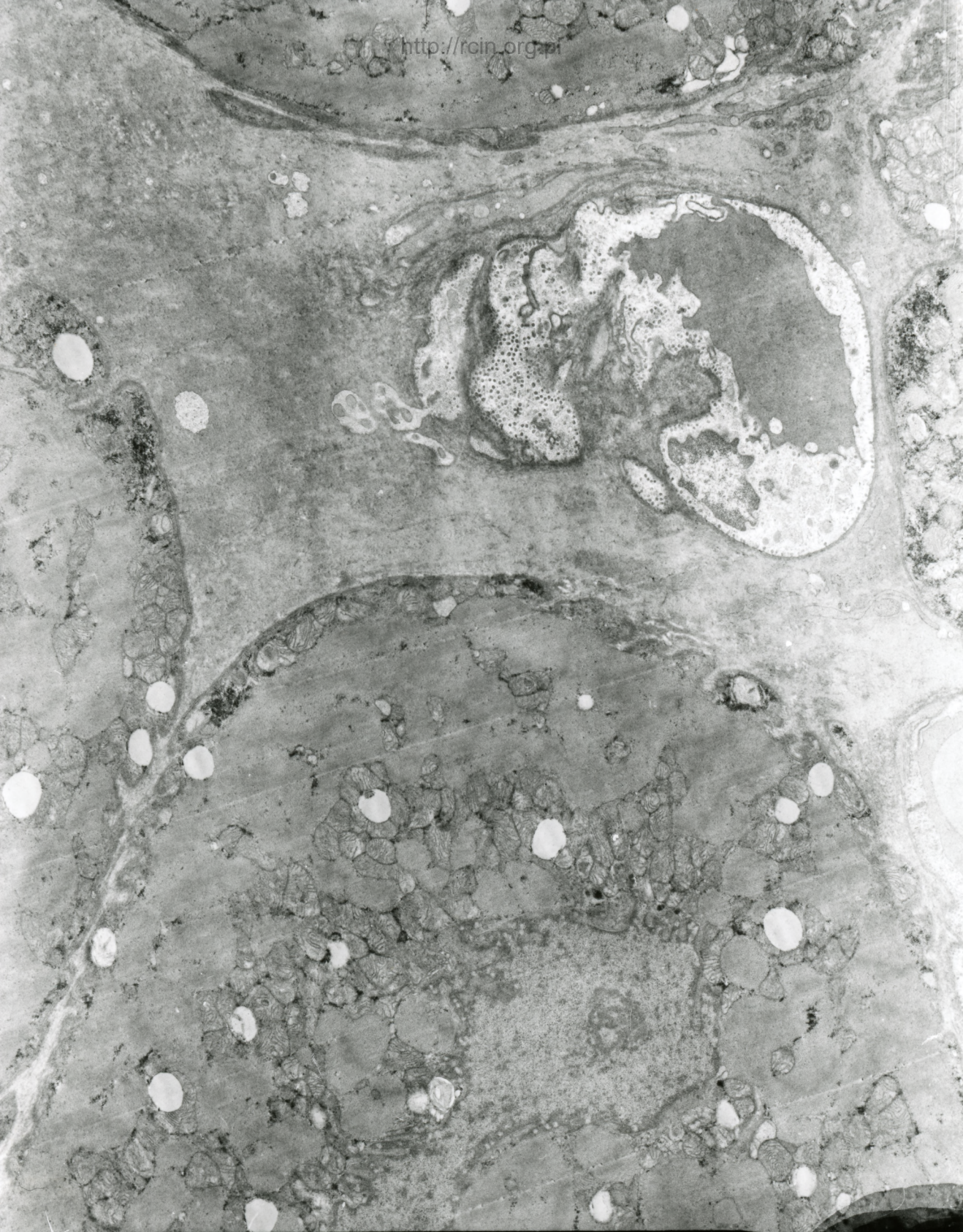
AF 2/07/SERCE
07/07/08 88 AKU X12K 500

Fig. 5



#F 1/2/87/SERCE
#7/2/87 88 8KV X2500

Fig. 6



AF 1/17/SERCE
BA AKU X2500

Fig. 7

3/07

Analiza ultrastrukturalna wykazała nieznaczne zaburzenia w układzie sarkomerów. W cytoplazmie kardiomiocytów obecne były liczne mitochondria i krople tłuszczu (Fig. 1-5). Jądra kardiomiocytów posiadały regularny kształt (Fig.6). Śródbłonek naczyń kapilarnych wykazywał cechy nekrozy (Fig.7).

Ultrastructural analysis showed discrete changes in the sarcomeres arrangement. Numerous mitochondria and fat droplets were present in the sarcoplasm (Figs.1-5). Cardiomyocyte nuclei were characterized by a regular shape (Fig.6). Capillary endothelium revealed features of necrosis (Fig.7).