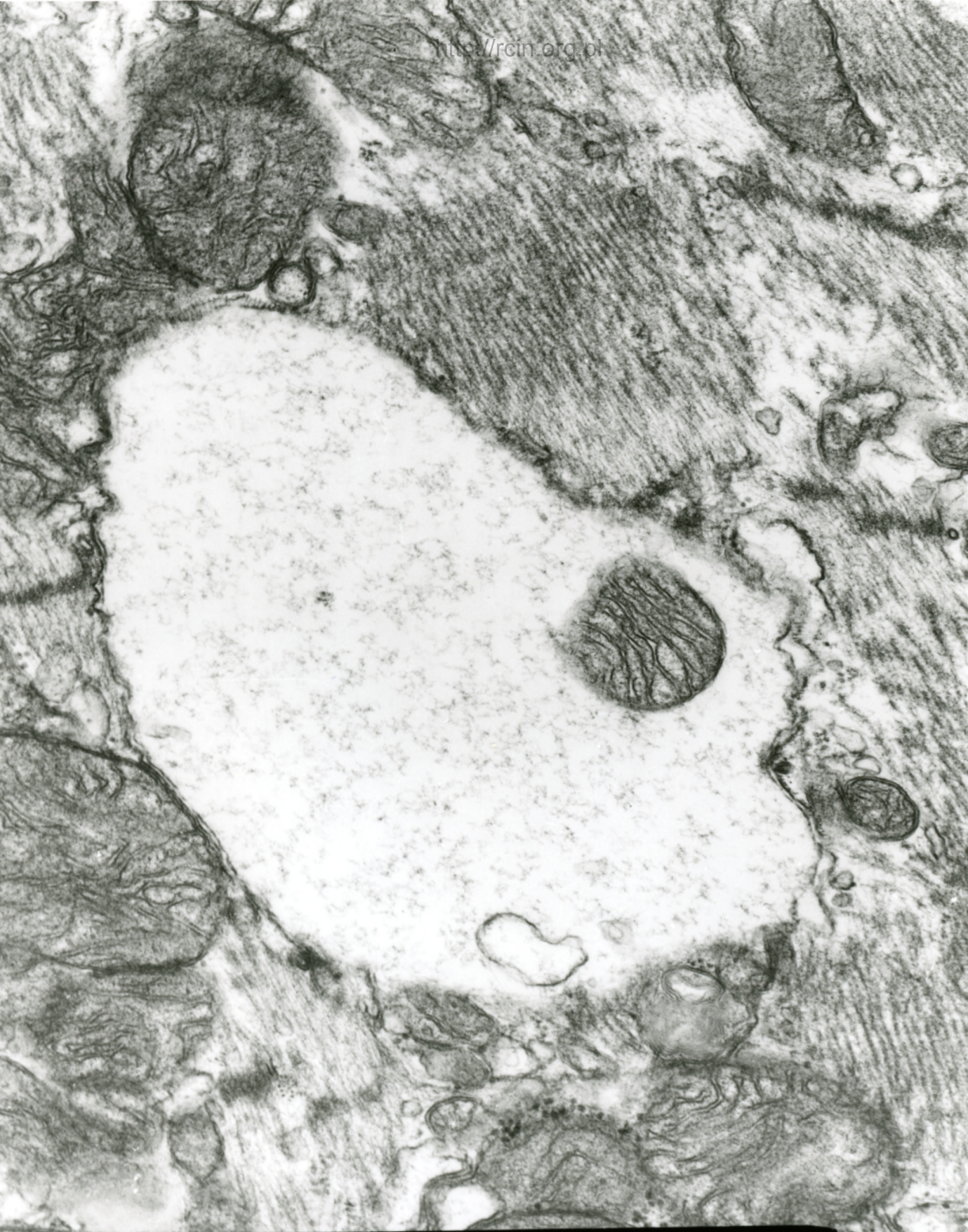


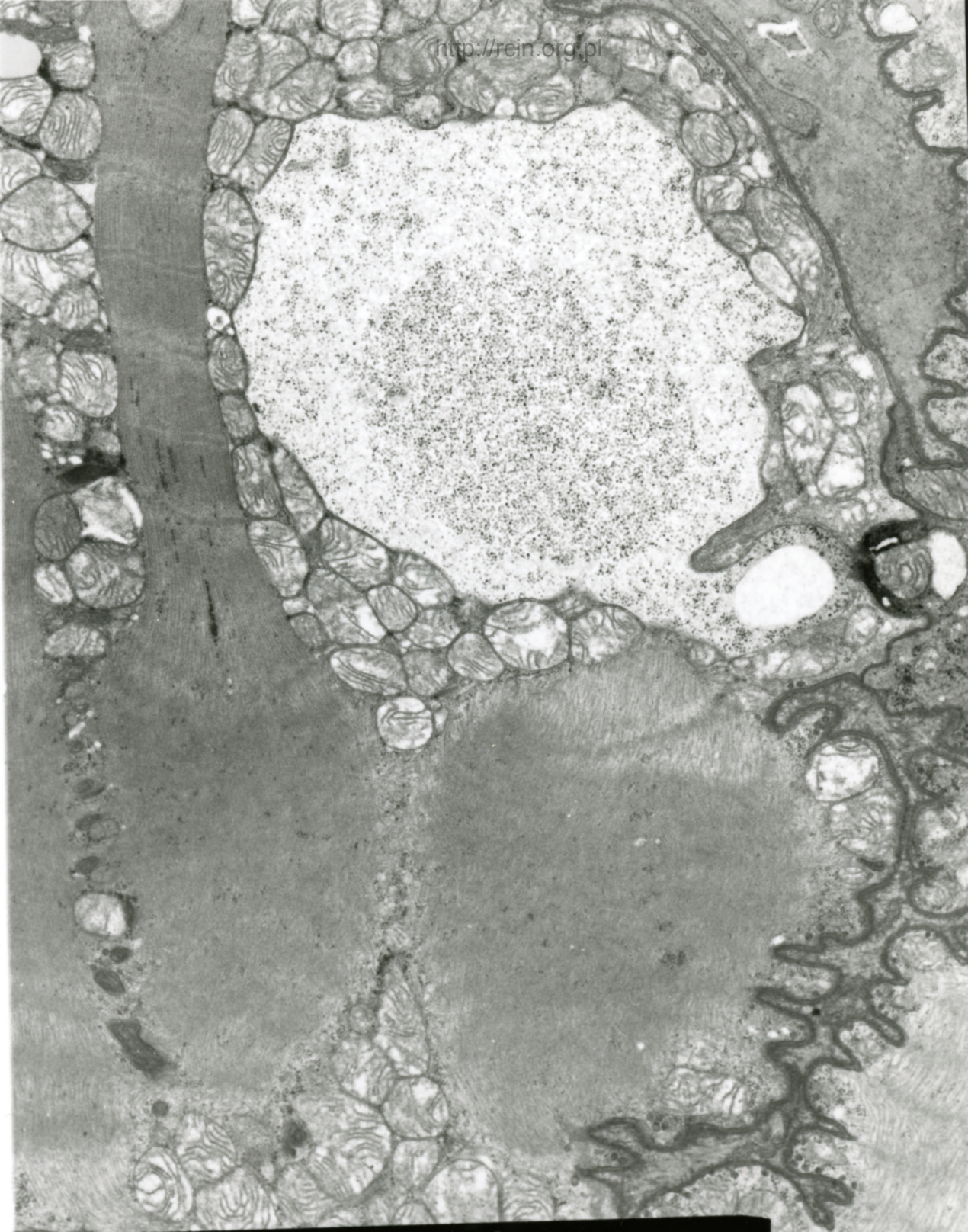
AF 27/-89
091203 80.0KV X4000 2µ

Fig. 1



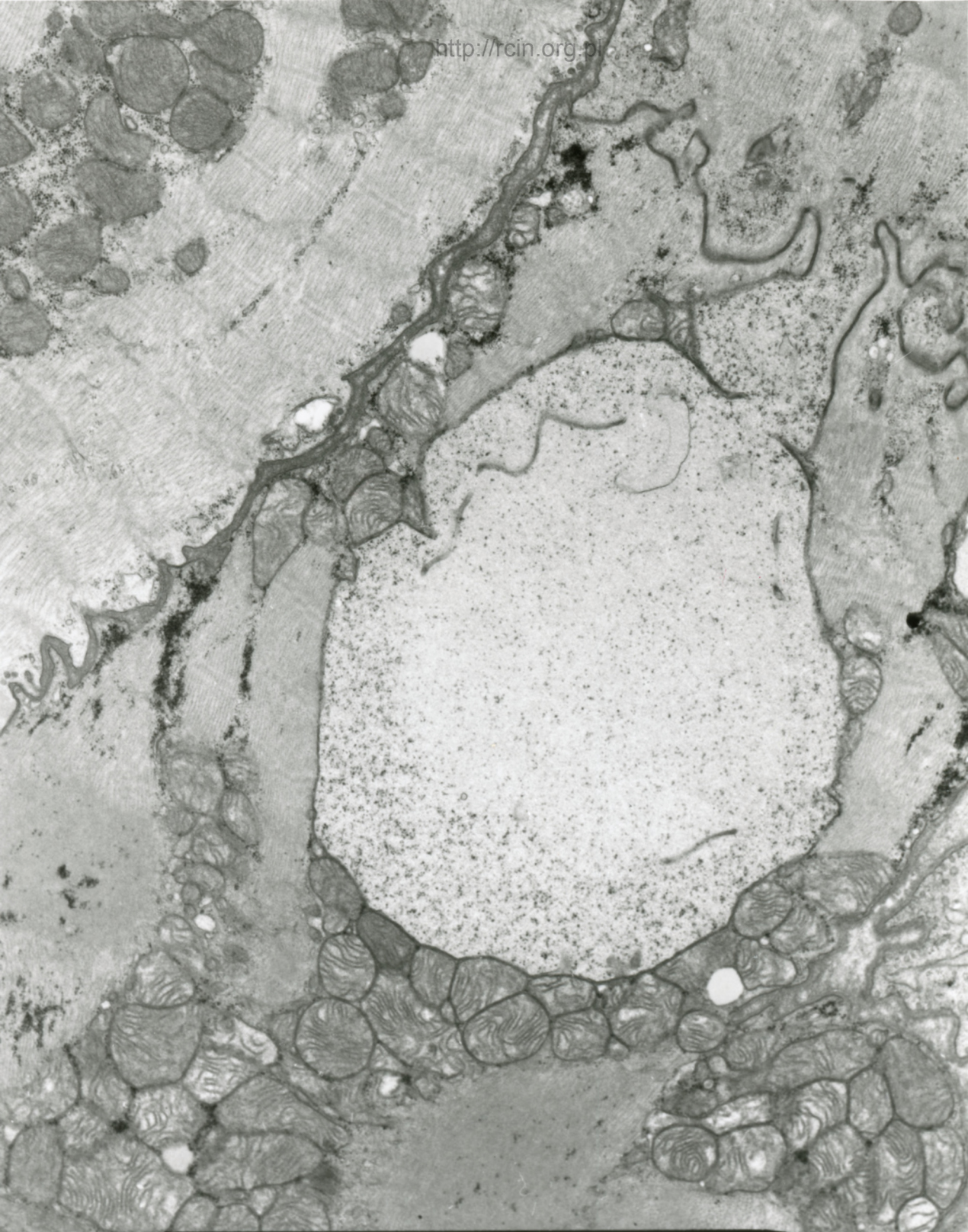
AF 27/-09
091201 80.0KV X15K 500nm

Fig. 2

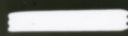


AF 27/-09
091206 80.0KV X5000

Fig. 3

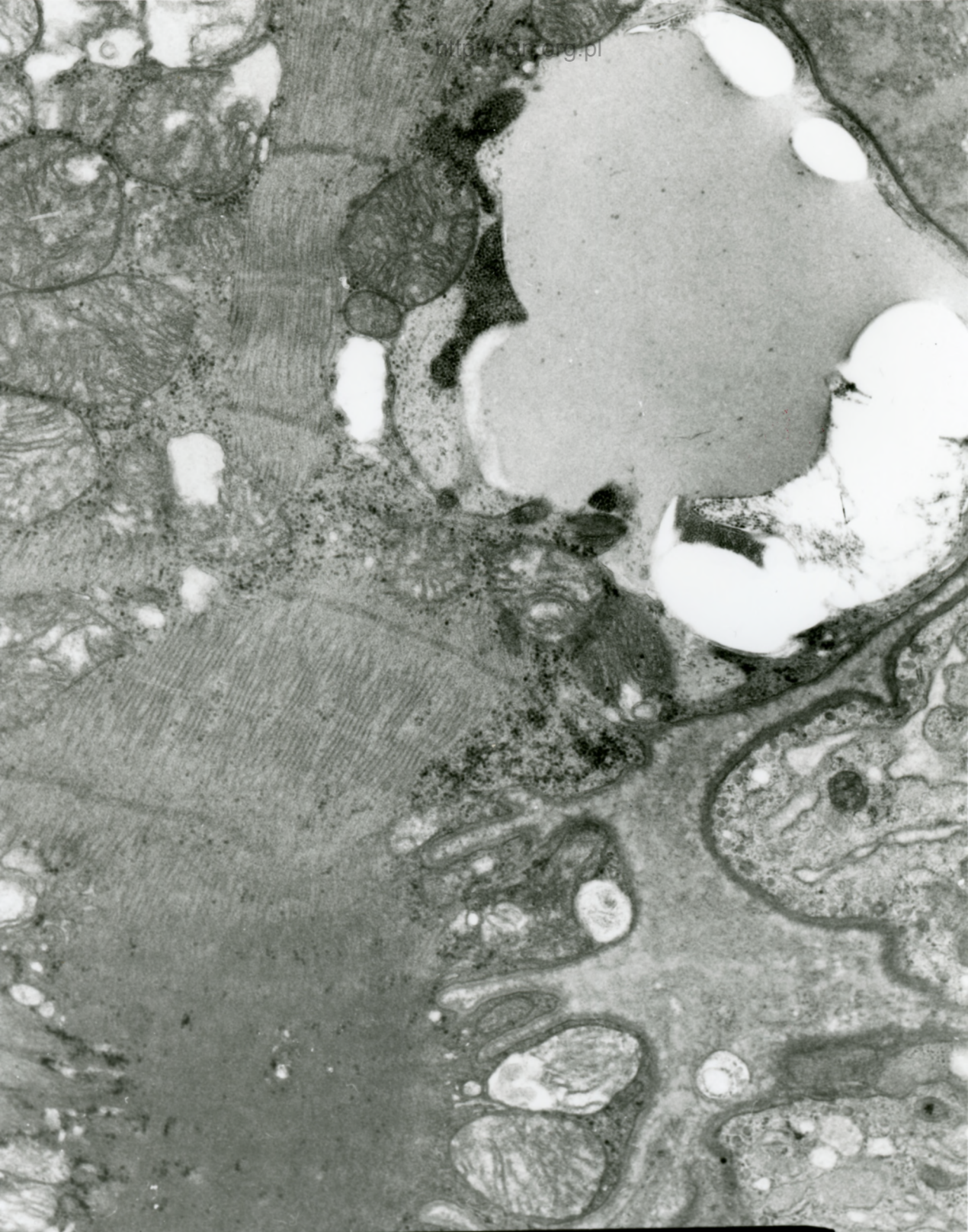


AF 27/-89
091208 80.0KV X5000

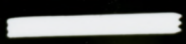


1μ

Fig. 4

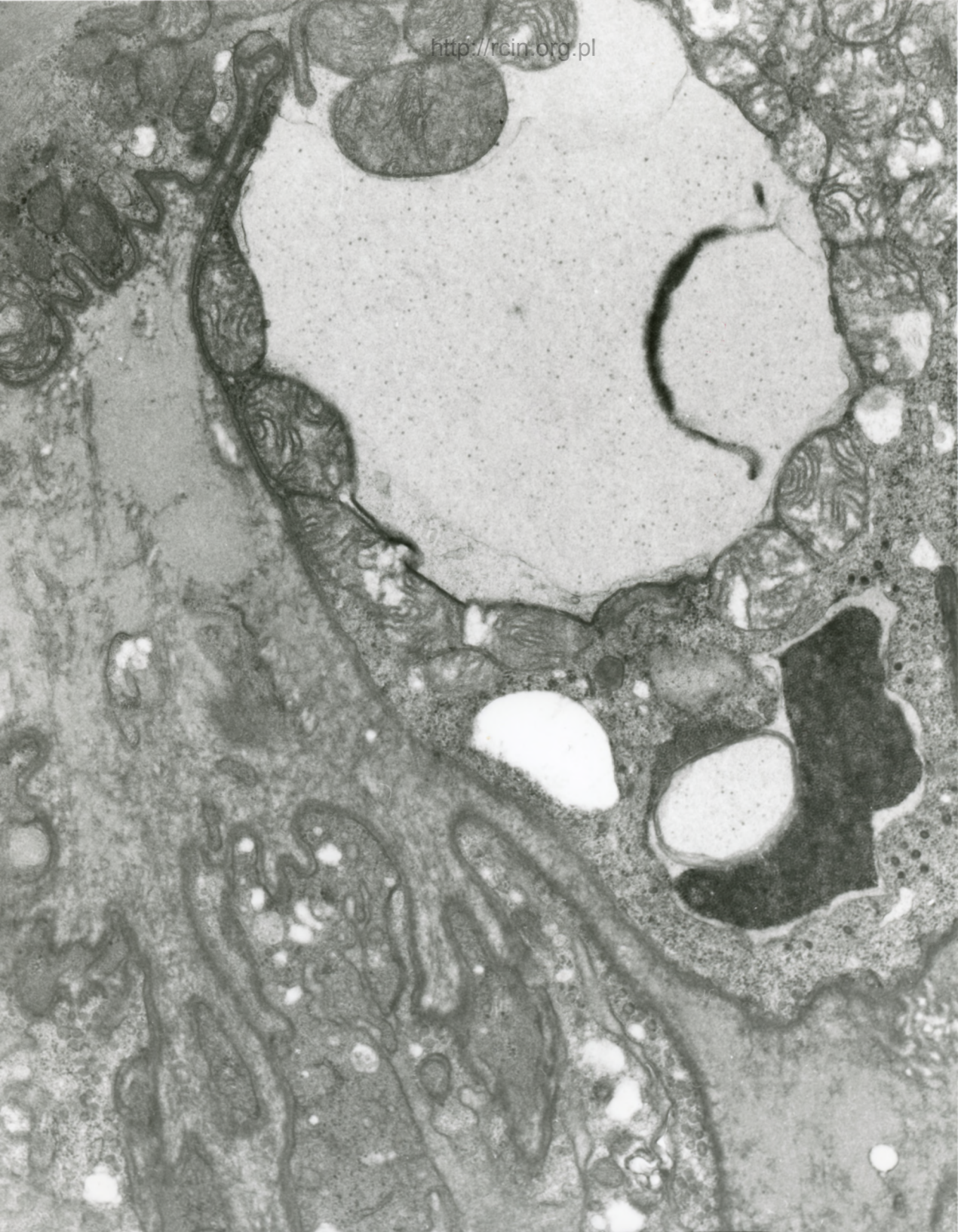


AF 27/-09
091202 80.0KV X7500



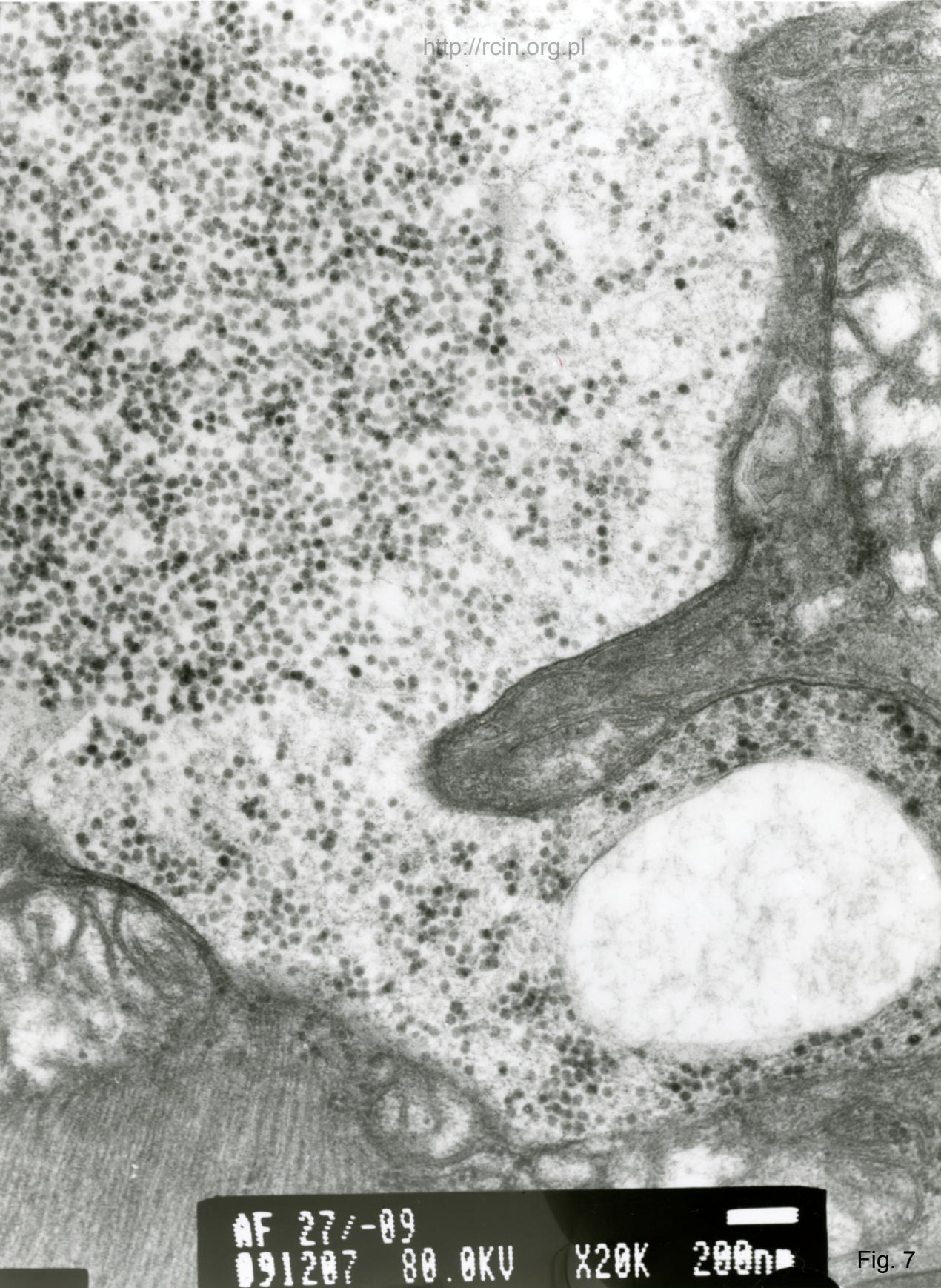
1μ

Fig. 5



MF 27/89
000050 00 0K11 Y7500

Fig. 6



AF 27/-89
091207 80.0KV X20K 200nm

Fig. 7

27/09 - biopsja komory (patrz też 26/07 – biopsja uszka i 55/09 – biopsja lewej komory)

1. 14

Kardiomiopatia rozstrzeniowa w przebiegu zapalenia mięśnia sercowego

Analiza ultrastrukturalna wykazała dezorganizację sarkomerów i cechy miocytolizy. Między miofibrillami licznie występowały wakuole oraz mitochondria o jasnej elektronowo macierzy, częściowo pozbawione grzebieni (Fig. 1-7).

Dilated cardiomyopathy in the course of myocarditis

Ultrastructural analysis revealed sarcomeric disorganization and features of myocytolysis (Figs. 1-3). Vacuoles as well as mitochondria characterised by electron-bright matrix, partially devoid of mitochondrial cristae were abundant between myofibrils.