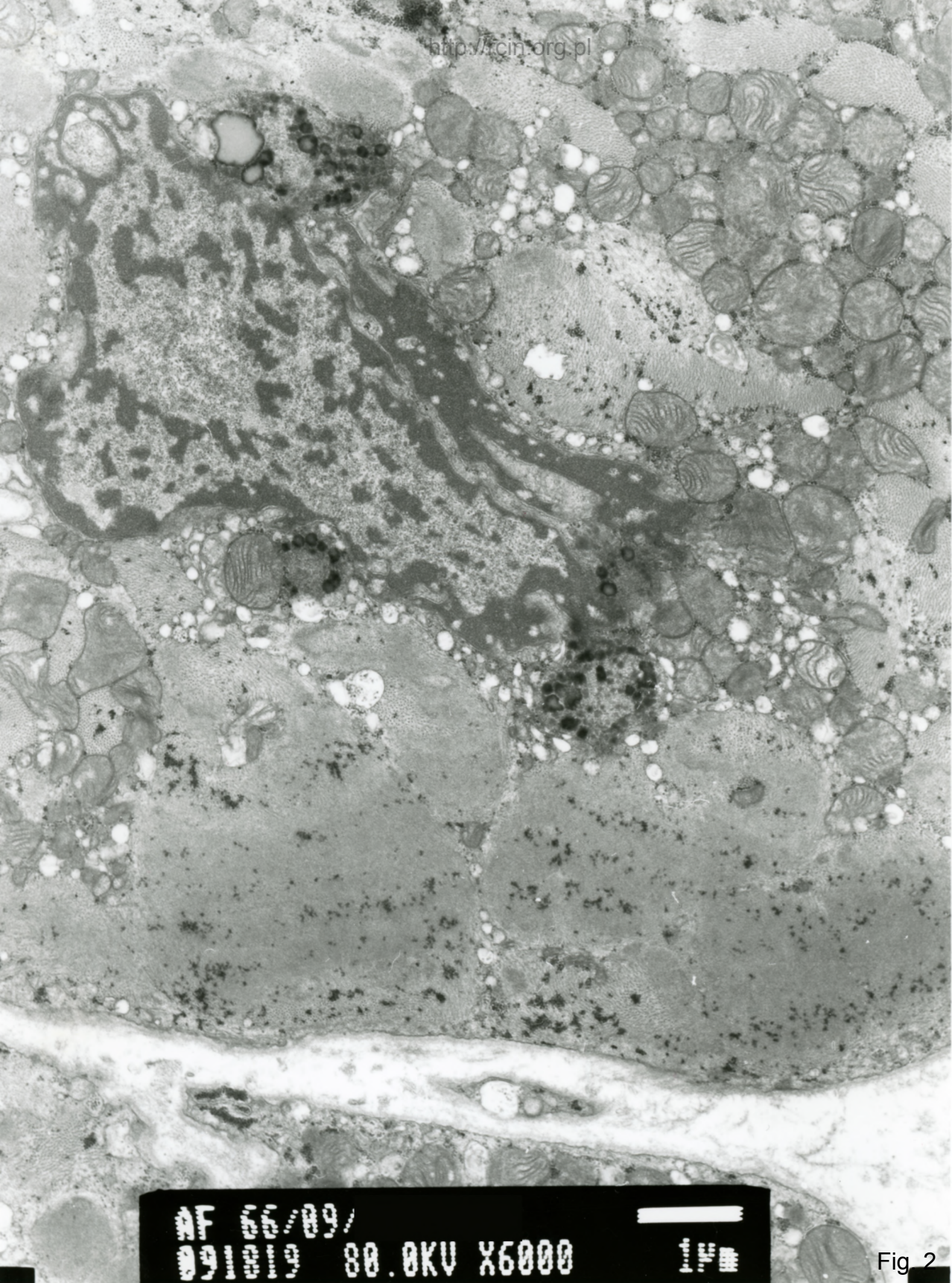


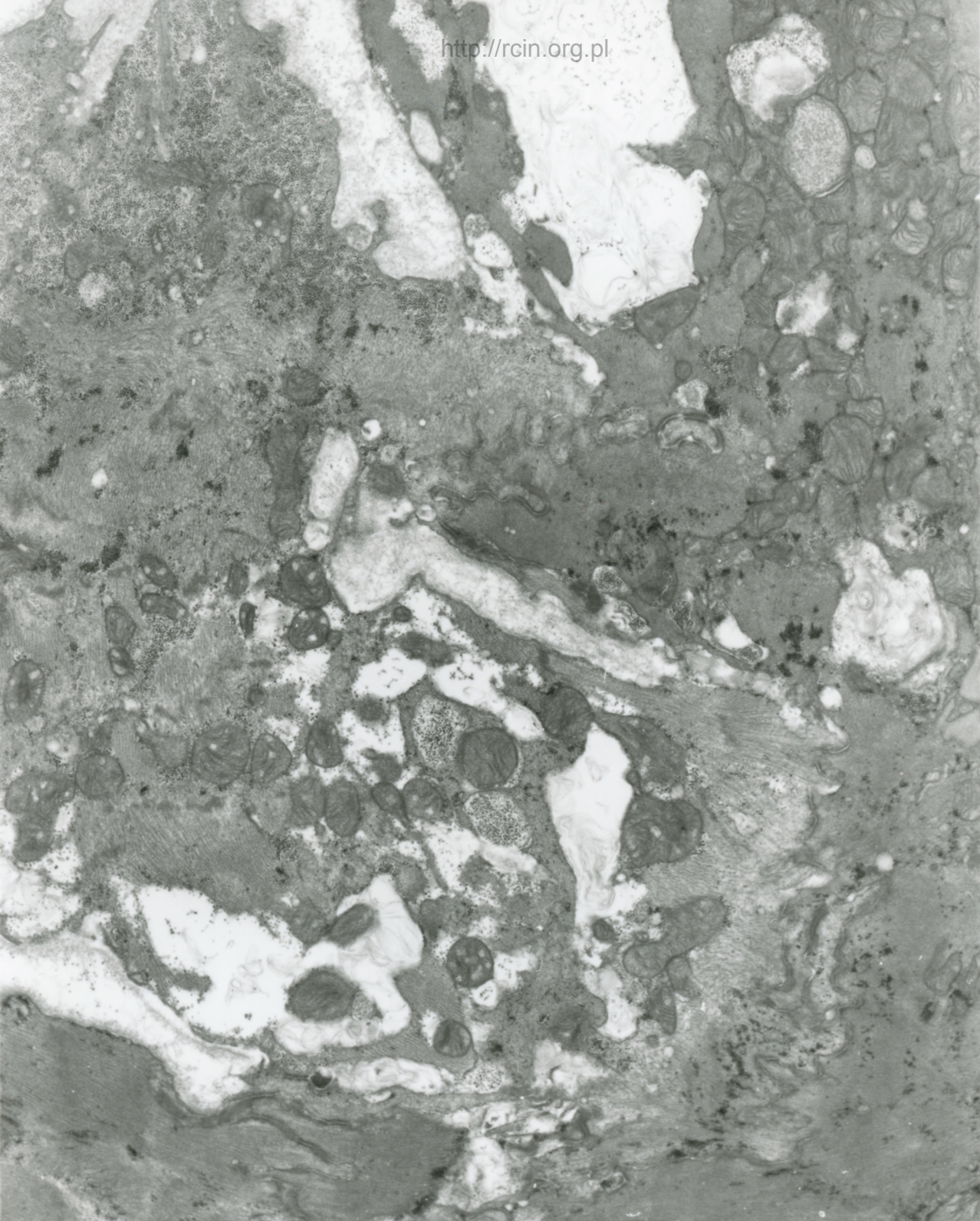
AF 66/89/
091815 80.0KV X3000 2µm

Fig. 1



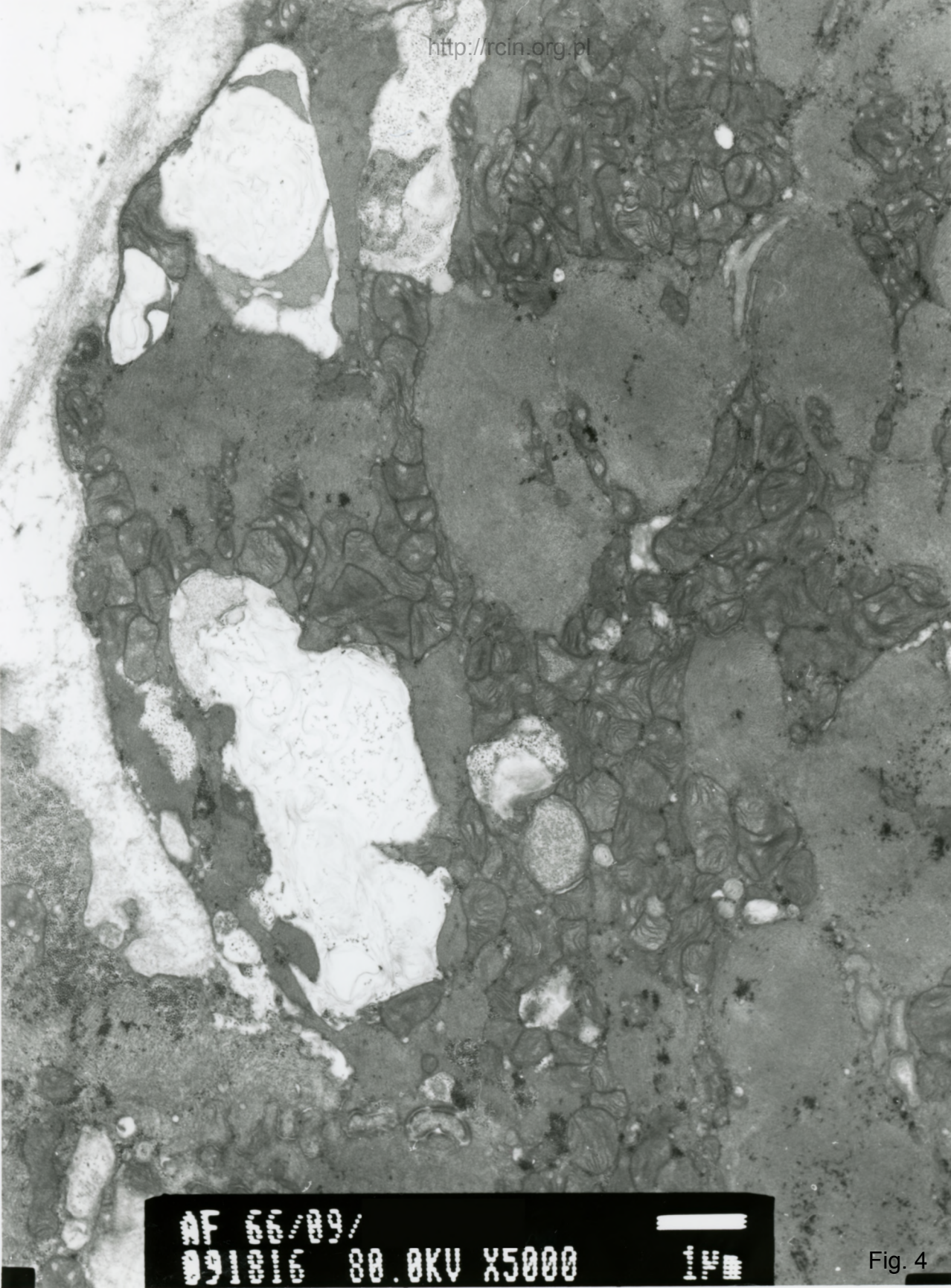
AF 05/09/
091013 80.0KV X6000 1µm

Fig 2



AF 66/09/
091017 80.0KV X5000 1µm

Fig. 3



AF 86/89/

091016 80.0KV X5000

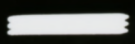
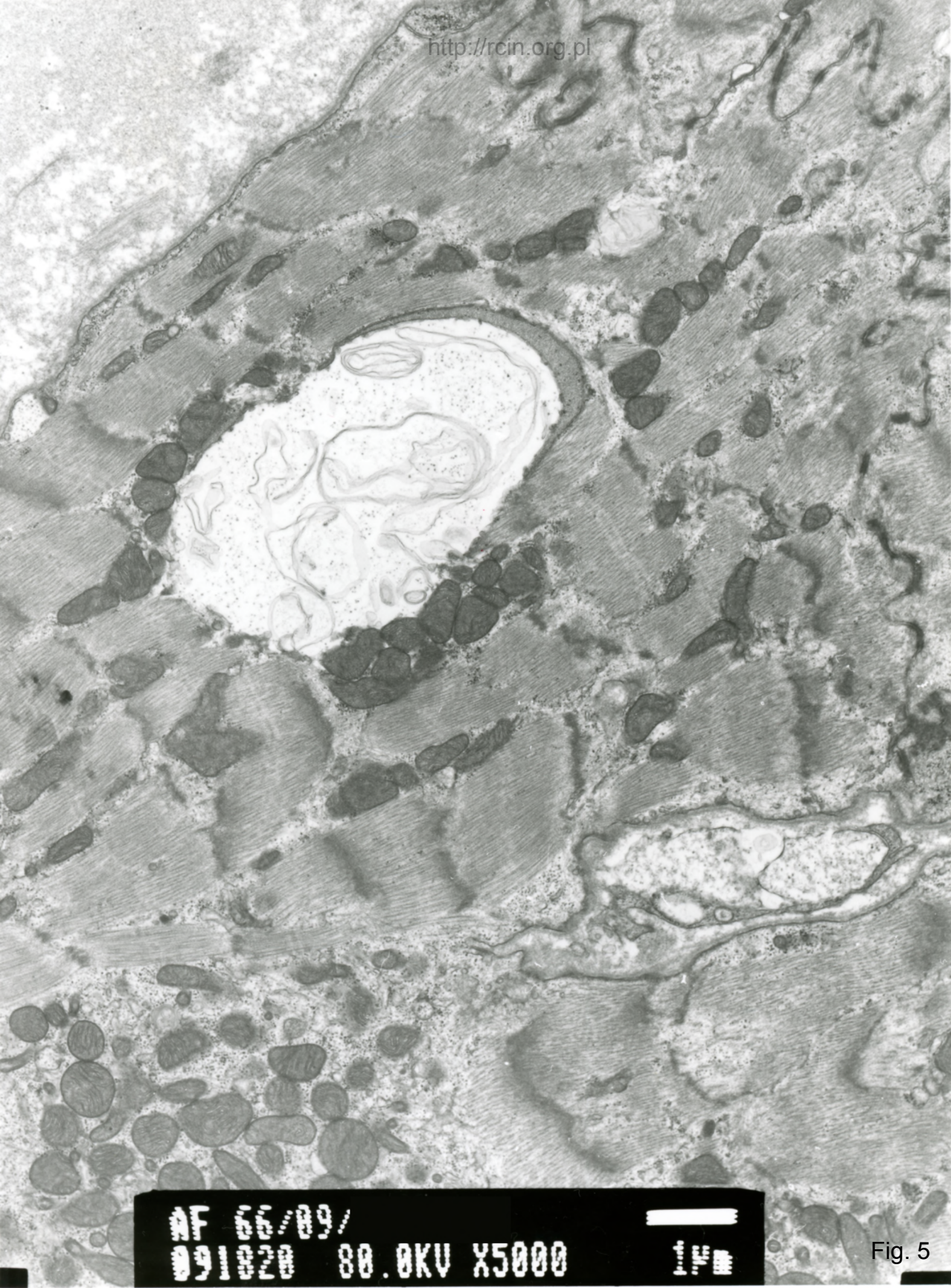


Fig. 4



AF 66/89/

091820

80.0KV X5000



1µm

Fig. 5



AF 66/09/

091010 80.0KV X6000

1µm

Fig. 6

66/09

Kardiomiopatia rozstrzeniowa

Analiza ultrastrukturalna wykazała zmiany w jądrach kardiomiocytów. Otoczki jądrowe kardiomiocytów posiadały nieregularny kształt i ogniskowo były przerwane (Fig. 1,2). W sąsiedztwie takich jąder obecne były lizosomy. W sarkoplazmie licznie występowały wakuole (Fig. 3-6).

Dilated cardiomyopathy

Electron microscopy analysis revealed changes in the ultrastructure of cardiomyocyte nuclei. The nuclei of cardiomyocytes were characterized by an altered shape, in many nuclei envelope had numerous invaginations and focally was ruptured (Figs. 1,2). In the vicinity of such nuclei lysosomes were present and abundant vacuoles were seen in the sarcoplasm (Fig. 3-6).