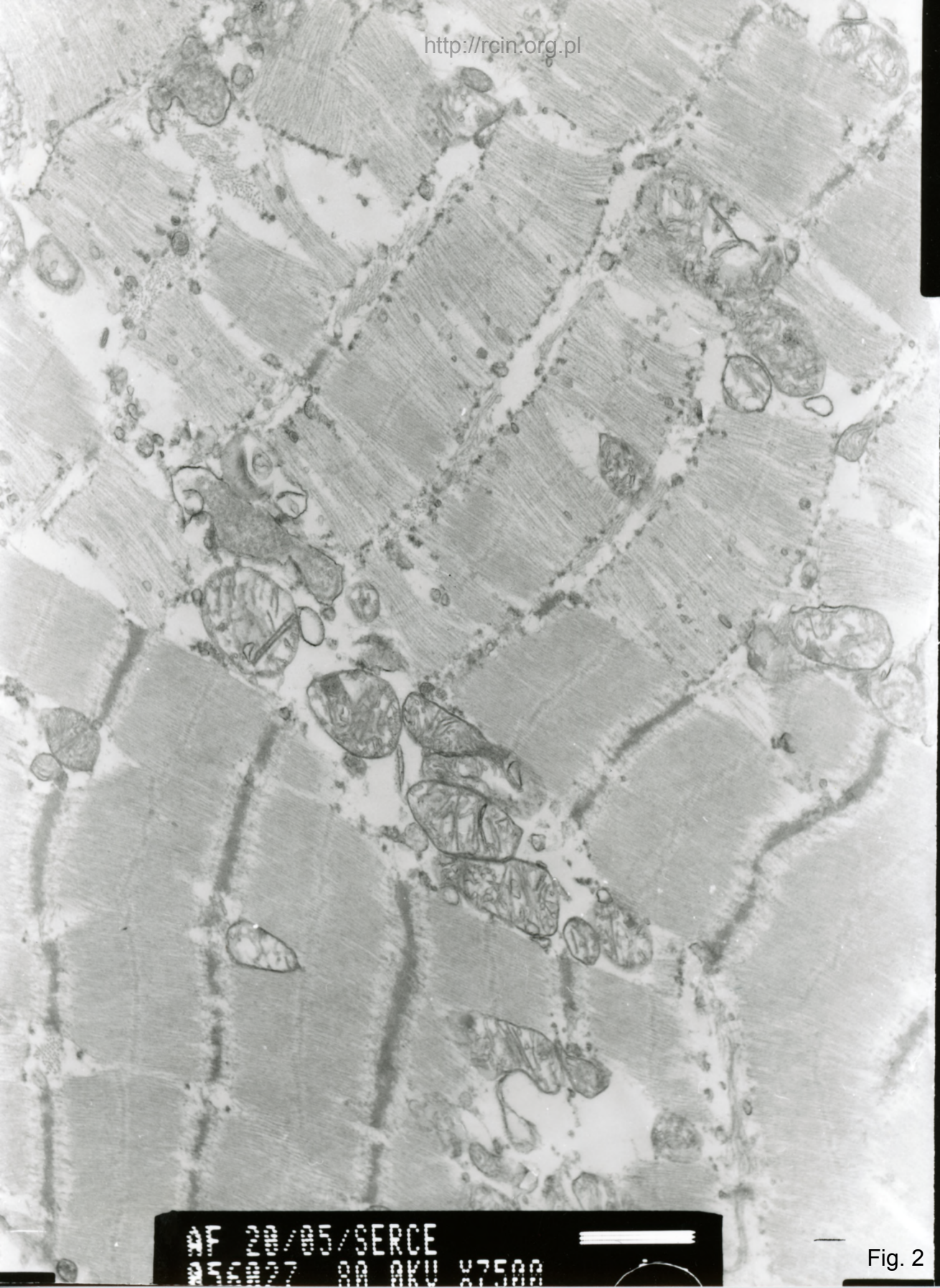


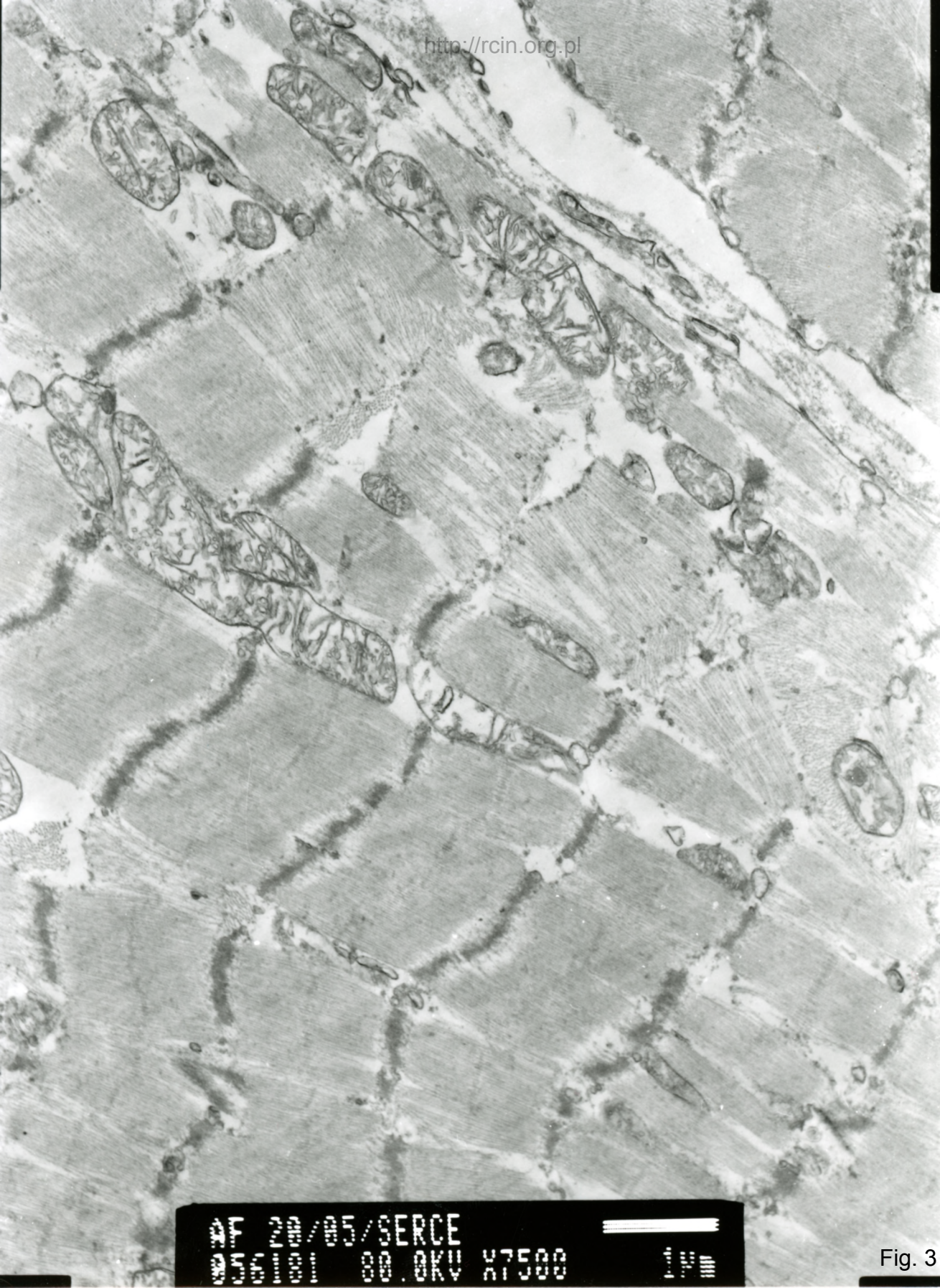
AF20/05/SERCE AE
060112 80.0KV X5000

Fig. 1



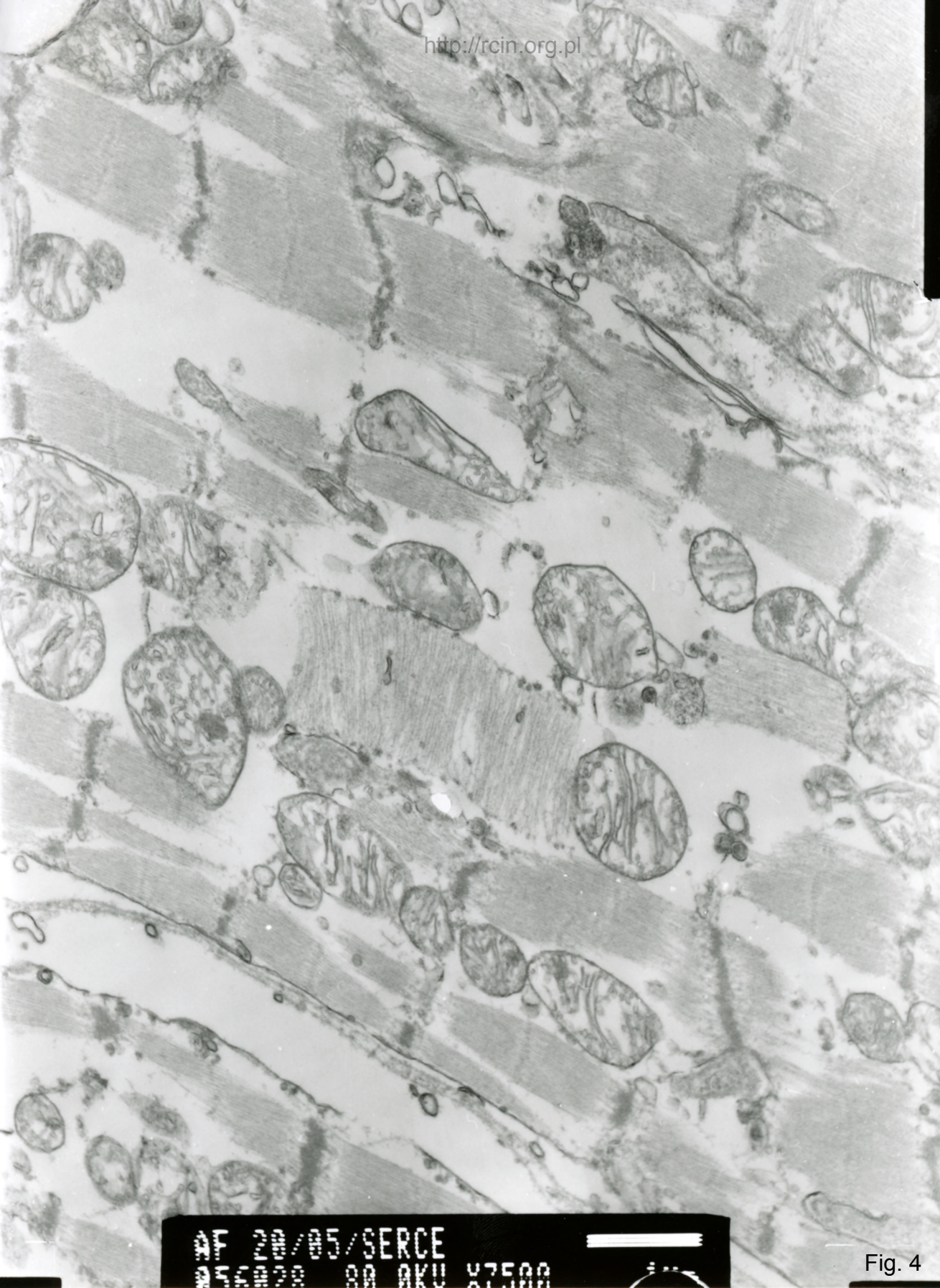
24 2000/05/SERCE
25 2000 00 AKU 07500

Fig. 2



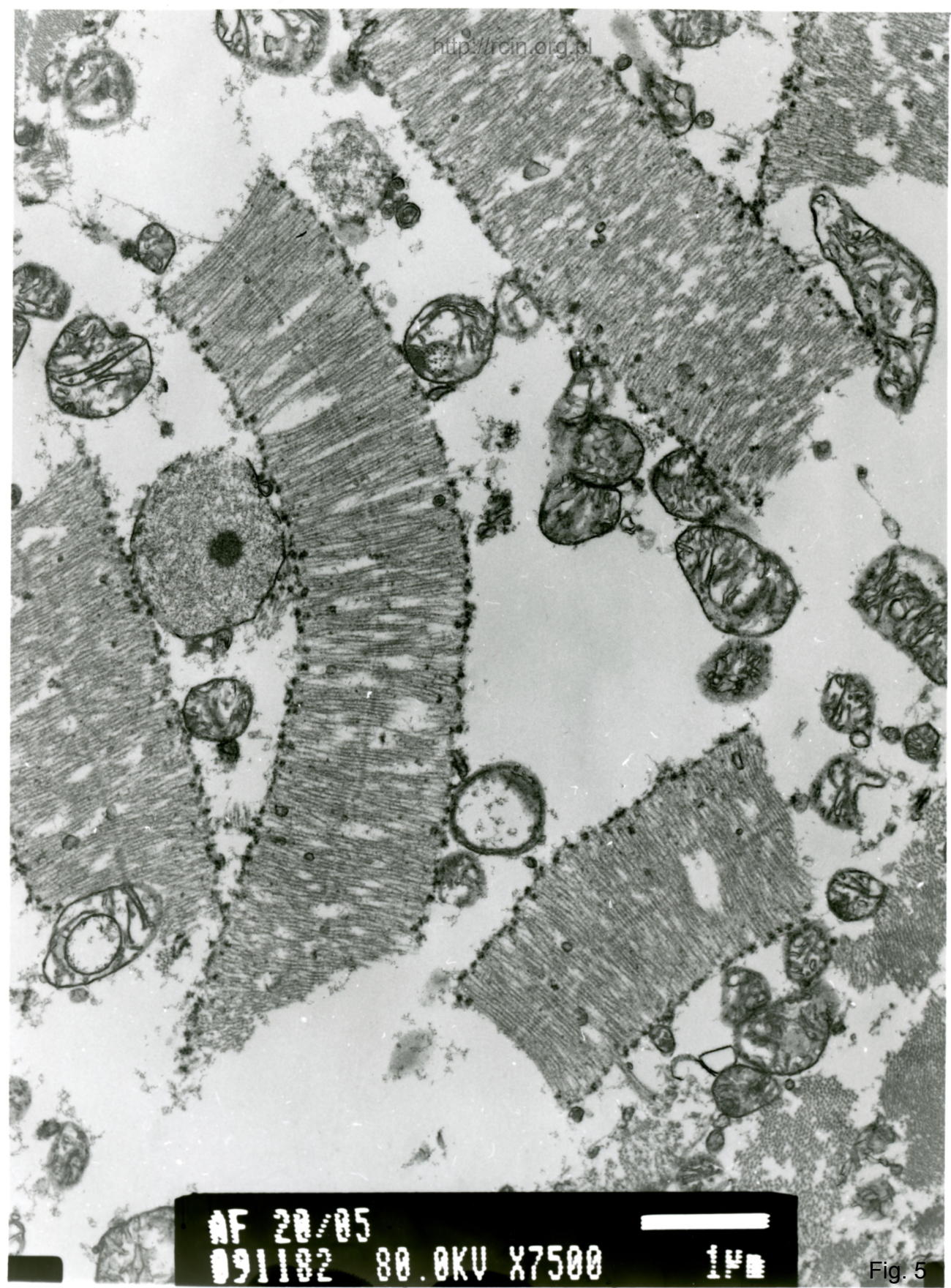
27 20/85/SERCE
00 00 00.0KV X7500

Fig. 3



AF 20/85/SERCE
050020 00 AKU X7500

Fig. 4

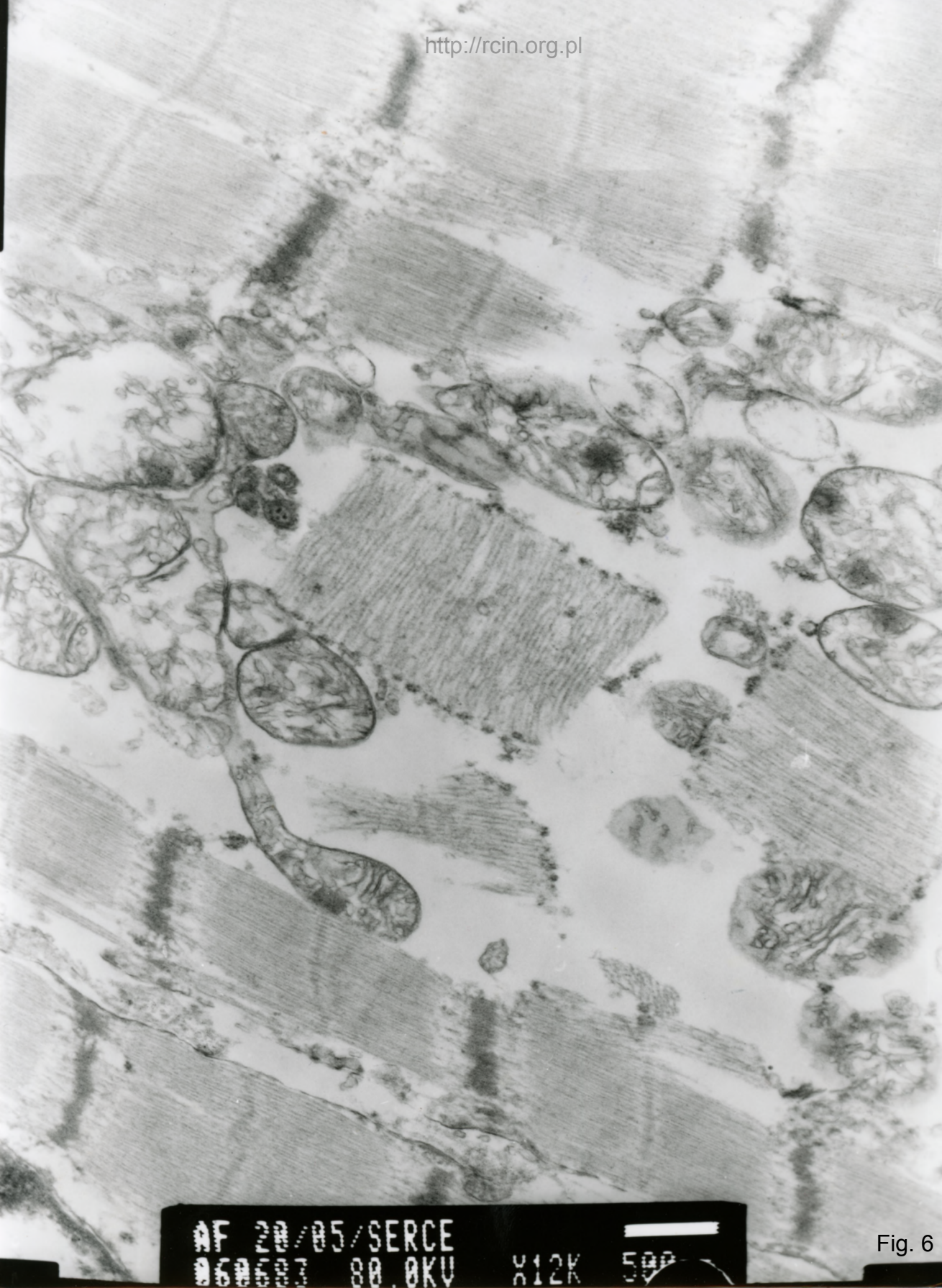


AF 20/05

091182 80.0KV X7500

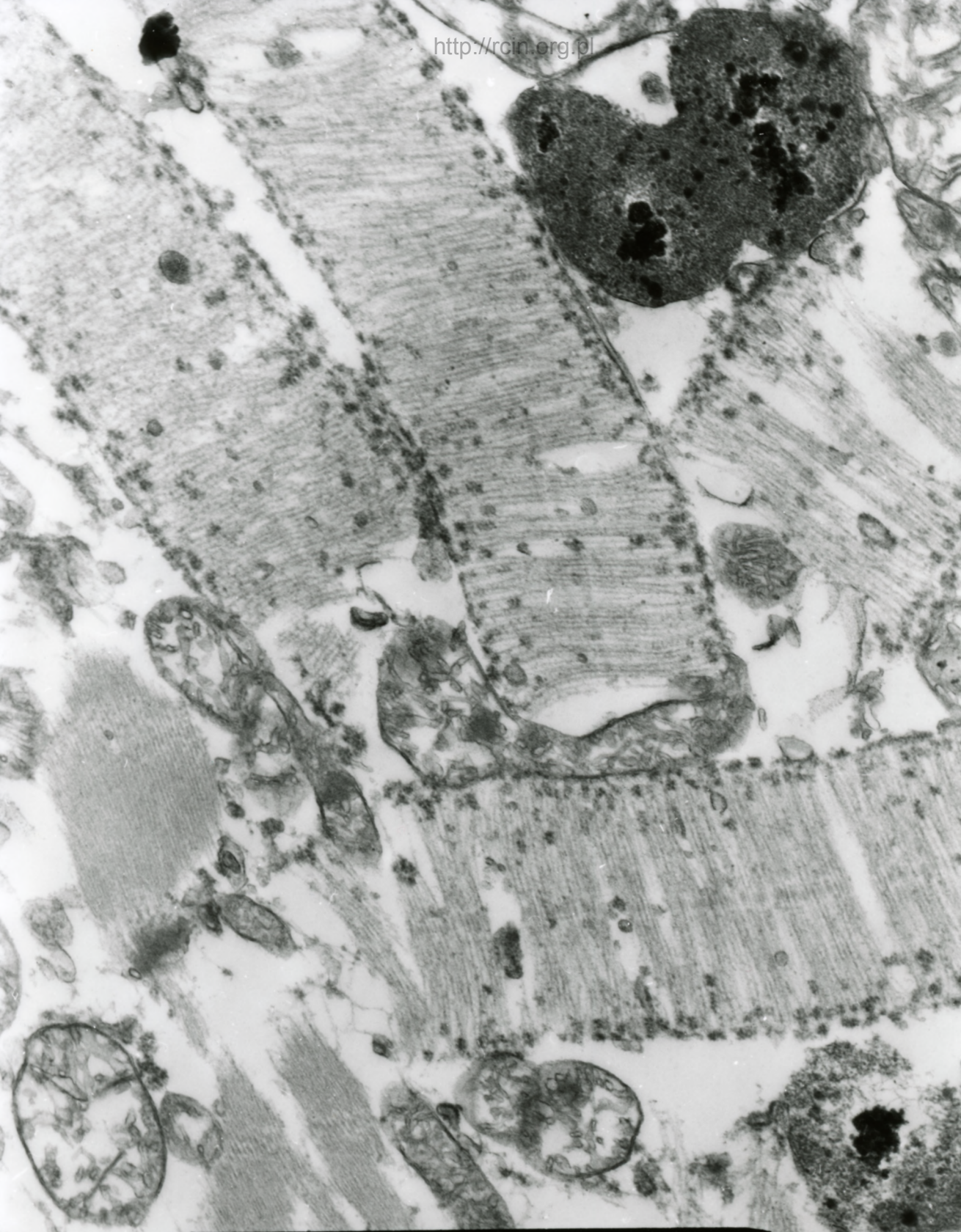
14

Fig. 5



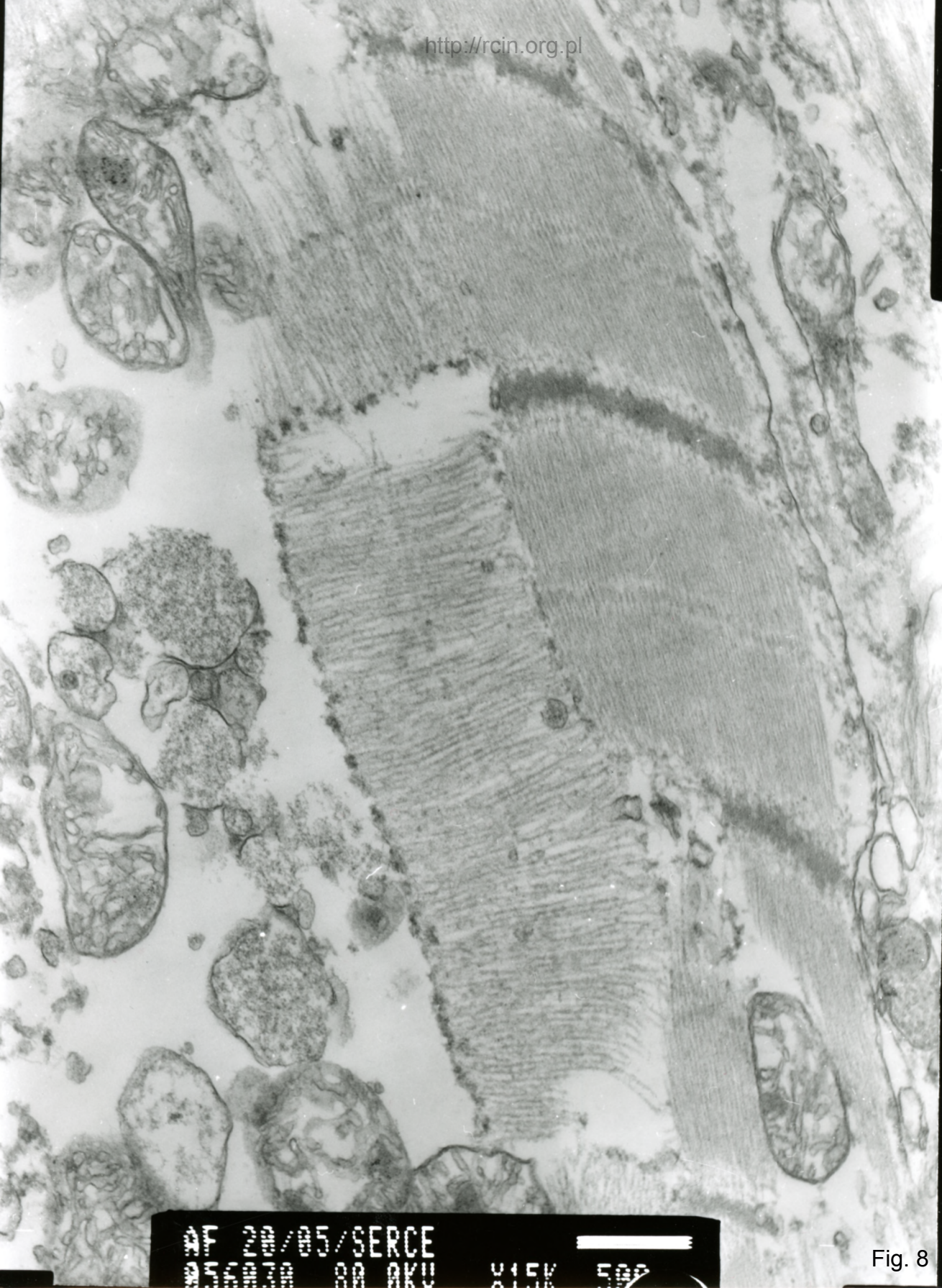
AF 20/05/SERCE
060503 80.0KV X12K 500

Fig. 6



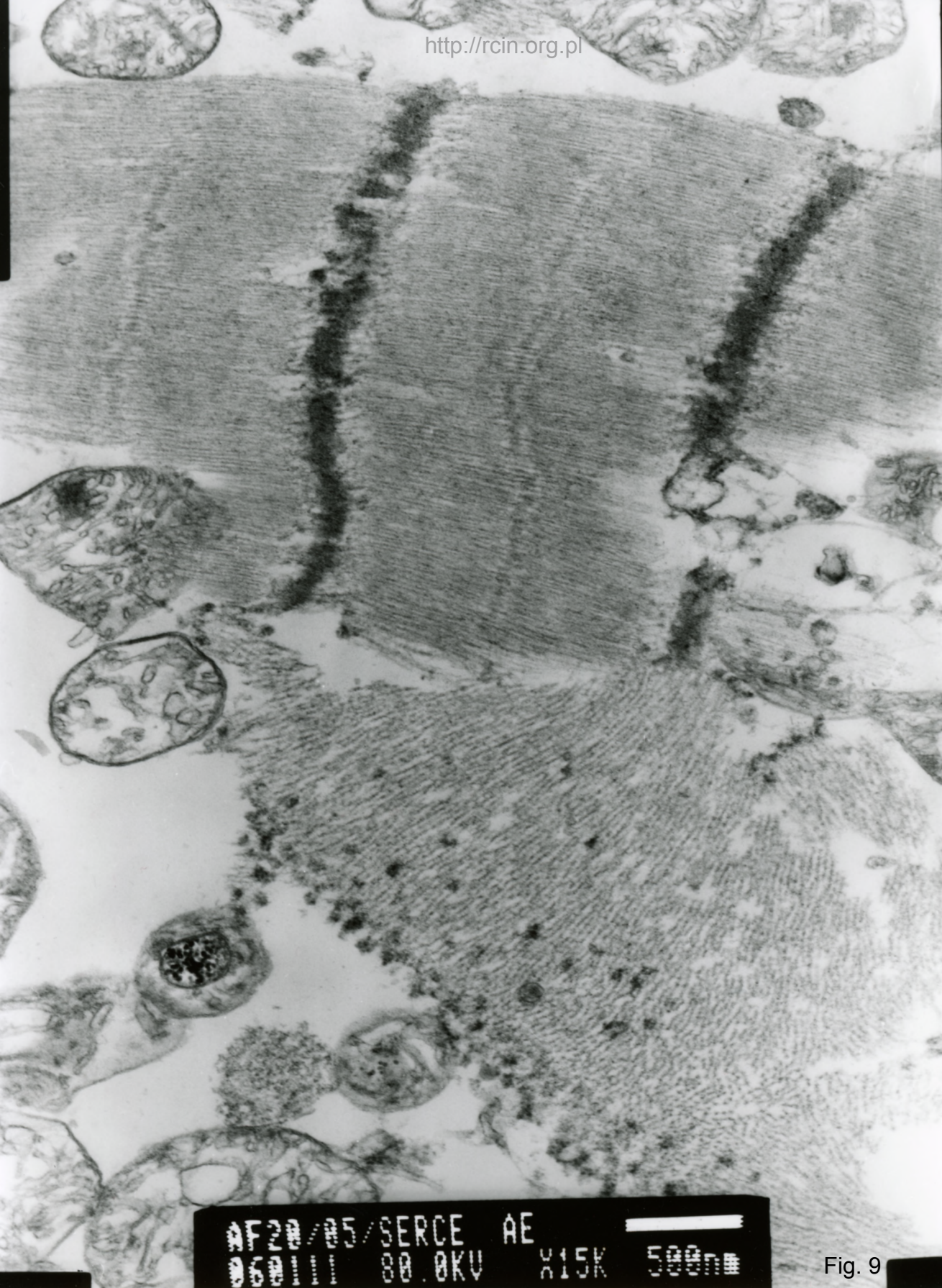
AF 20/05/SERCE
#57367 80.0KV X12K 500nm

Fig. 7



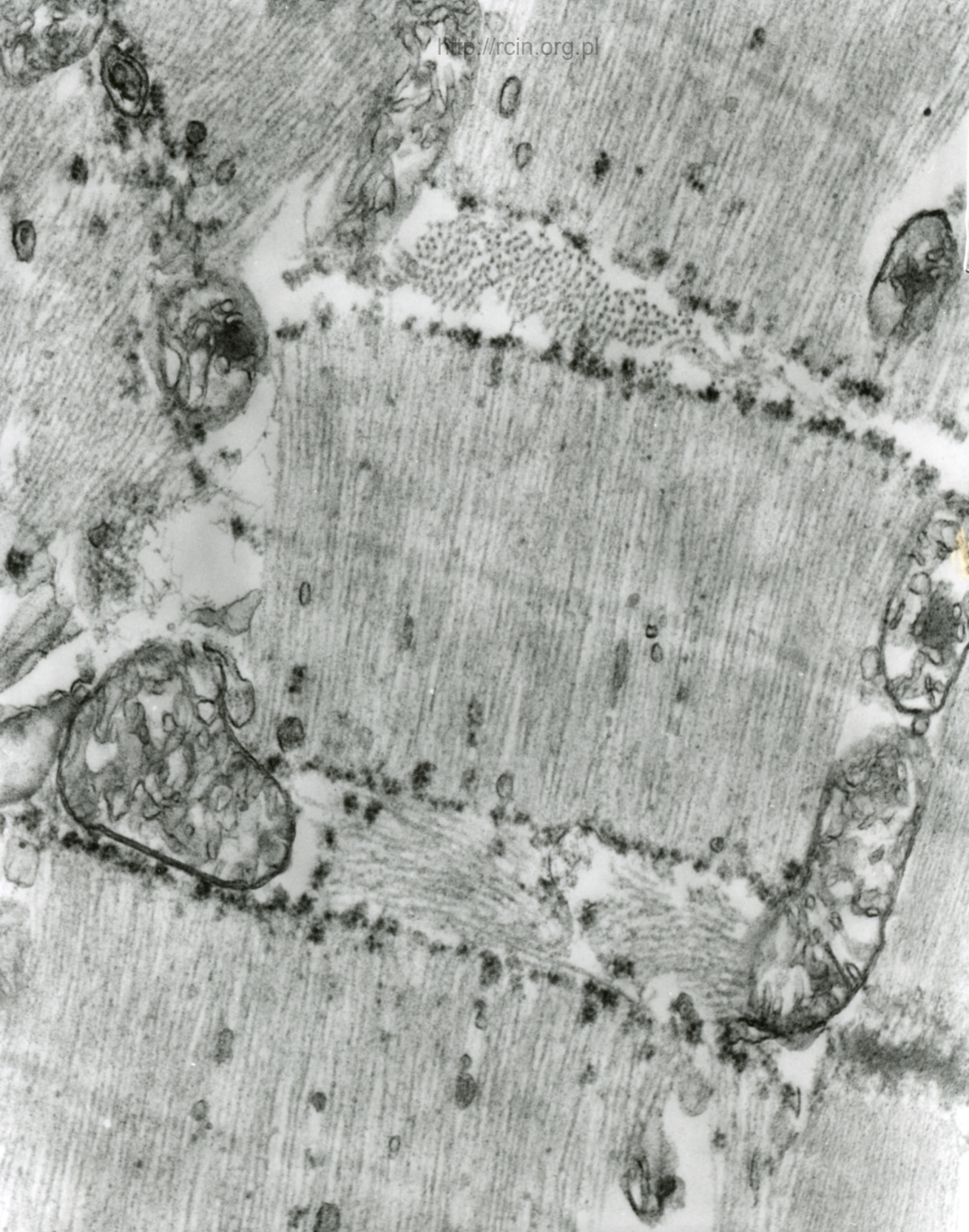
24 20/85/SERCE
25 20 80 AKU X15K 500

Fig. 8



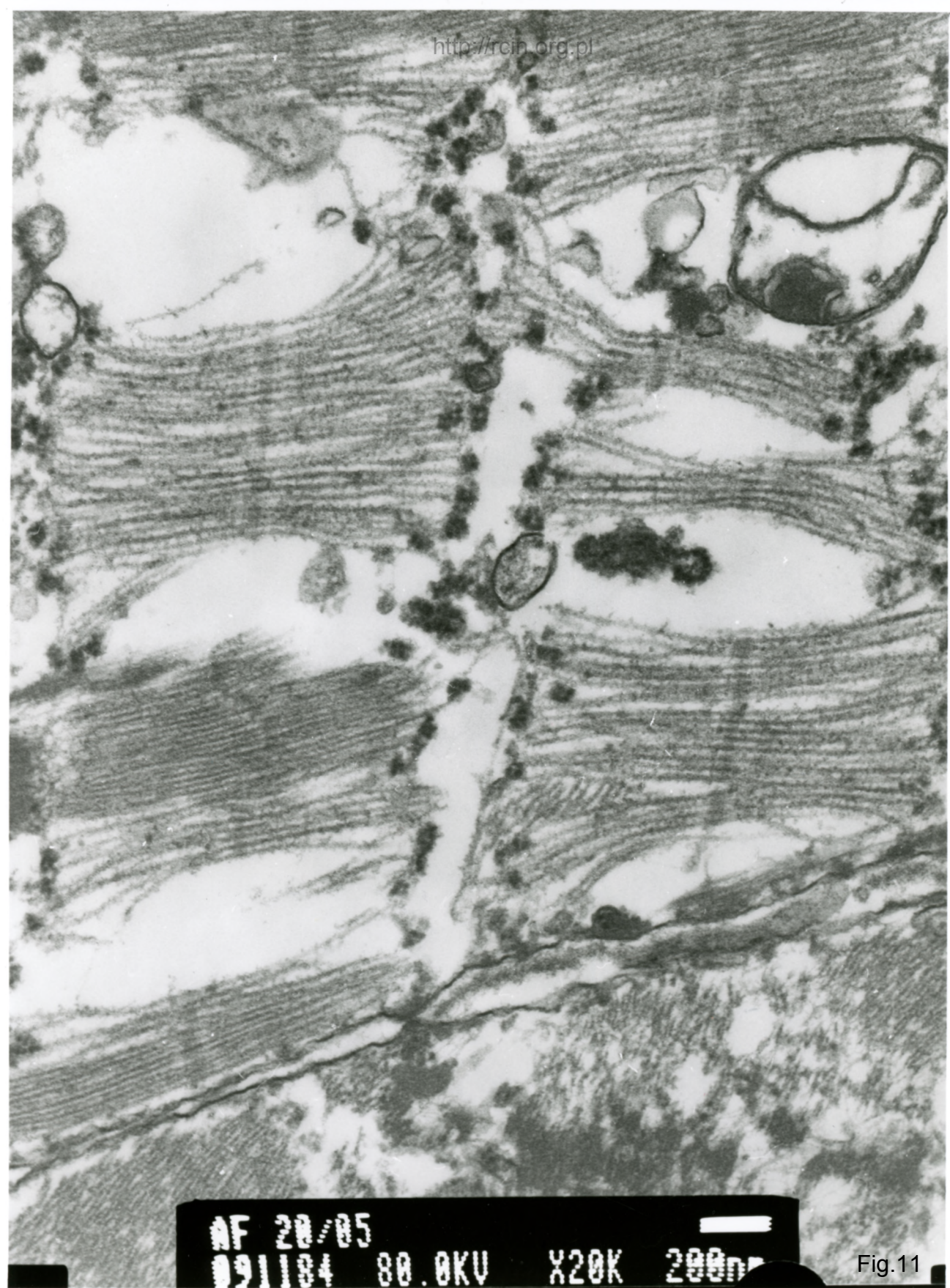
AF20/05/SERCE AE
060111 80.0KV X15K 500nm

Fig. 9



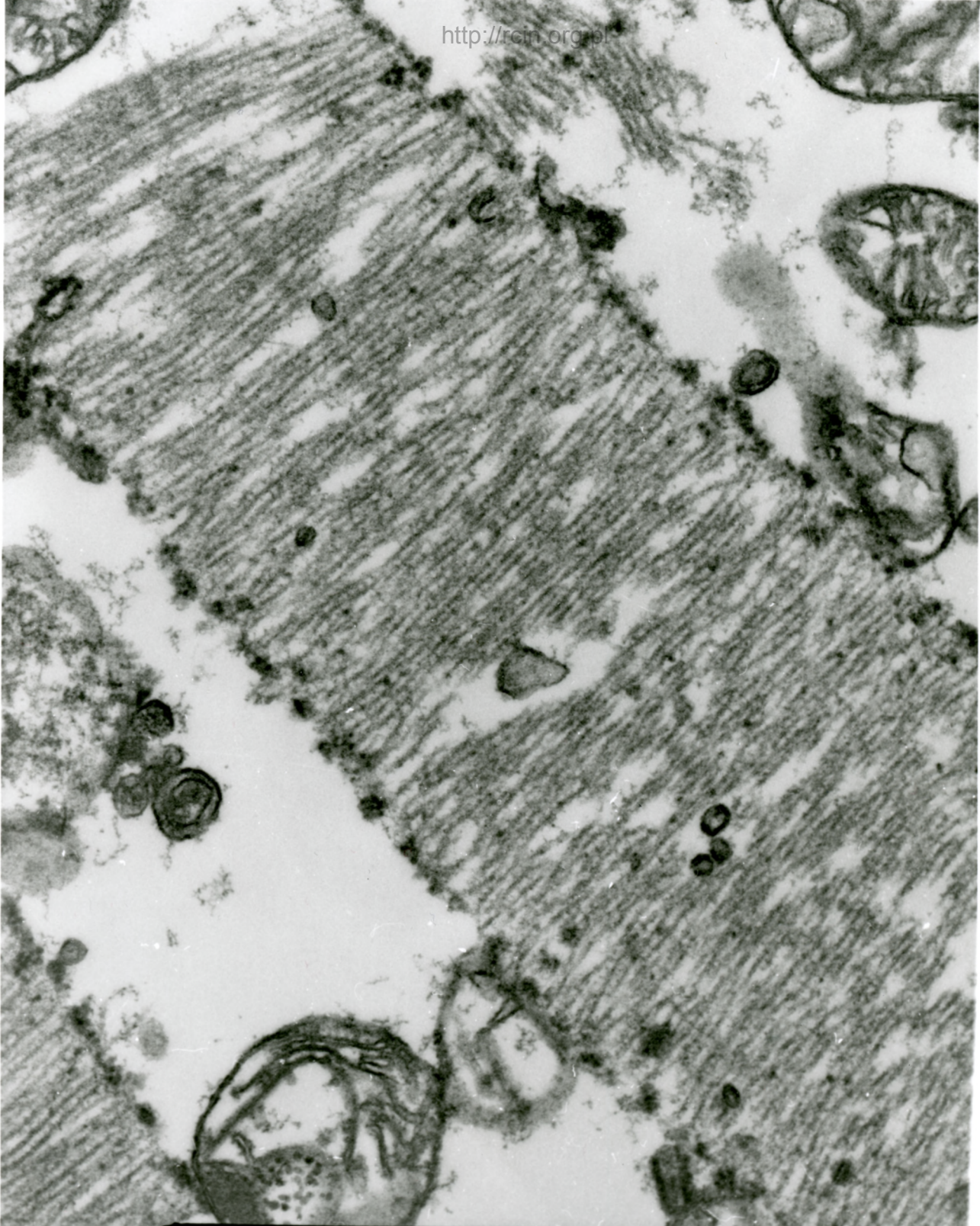
AF 20/05/SERCE
083100 80.0KV X20K 200nm

Fig.10



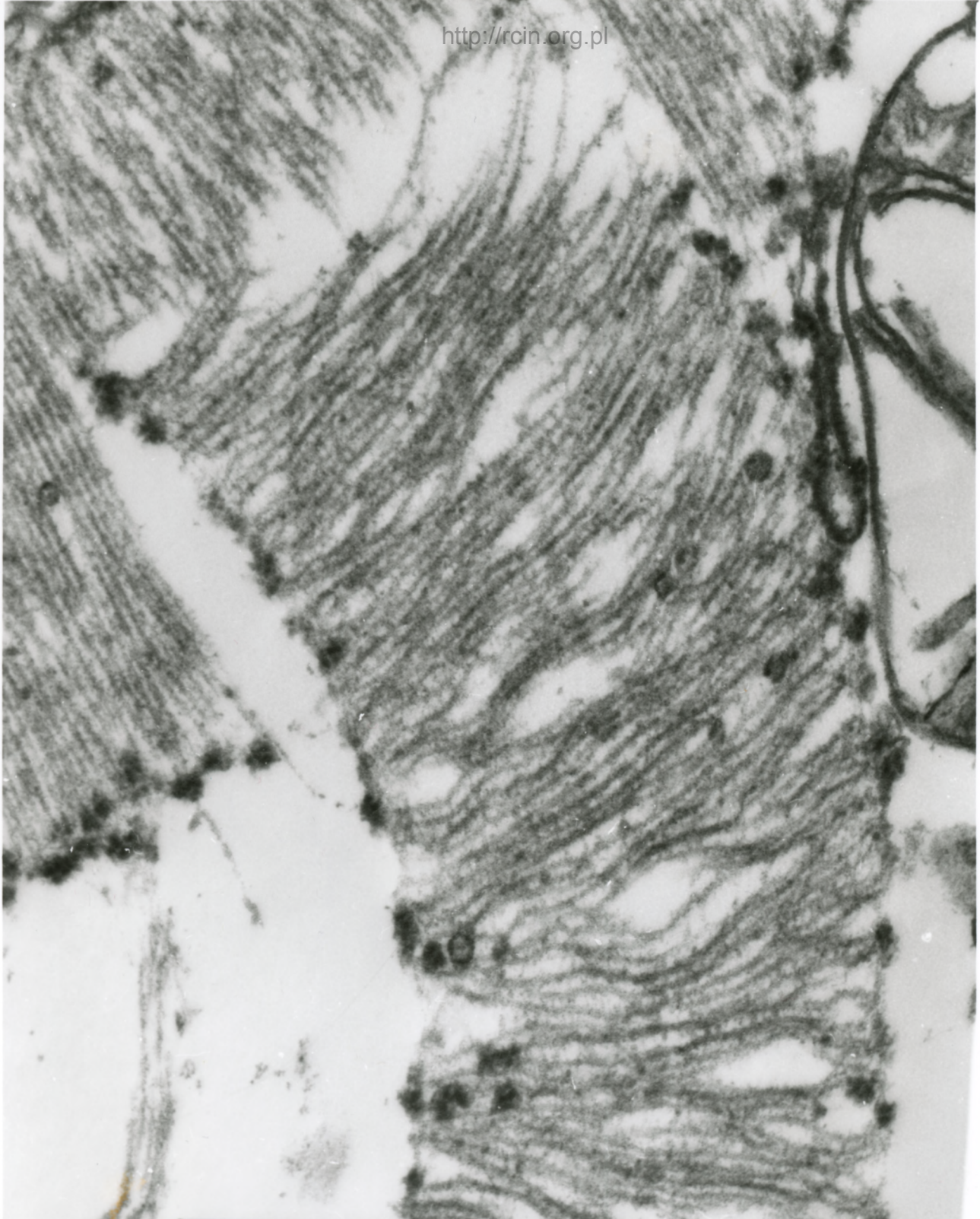
AF 20/05
091184 80.0KV X20K 200nm

Fig.11



AF 20/05
091183 80.0KV X20K 200nm

Fig.12



AF 20/05
091181 80.0KV X25K 200nm

Fig.13

Biopsja serca (ściana cienka)

20/05 (patrz też 19/05 – biopsja serca ściana gruba, oraz 46/03 – biopsja mięśnia)

1. 6

Kardiomiopatia

Analiza ultrastrukturalna wykazała znaczne zmiany w kardiomiocytach. Obserwowano poważne nieprawidłowości w budowie i układzie sarkomerów. Poszczególne miofibryle przebiegały w różnych kierunkach, widoczna była ich dezorganizacja, a wielu obszarach całkowity zanik. Mitochondria wykazywały cechy obrzęku, charakteryzowały się jasną macierzą i utratą grzebieni mitochondrialnych, niektóre cechowały się zupełnie pustym wnętrzem (Fig. 1-13).

Cardiomyopathy

Ultrastructural analysis revealed significant changes in cardiomyocytes. Severe sarcomeric aberrations were observed as well as substantial changes in the myofibrils' arrangement. Focally complete atrophy of myofibrils was noticed. Mitochondria showed features of swelling, bright matrix and loss of mitochondrial cristae, some were characterized by a completely empty interior (Fig. 1-12)