

Przypadek 62/07 (patrz też 63/07)

1. 24

Rozpoznanie: Niescalenie

Mięsień szkieletowy

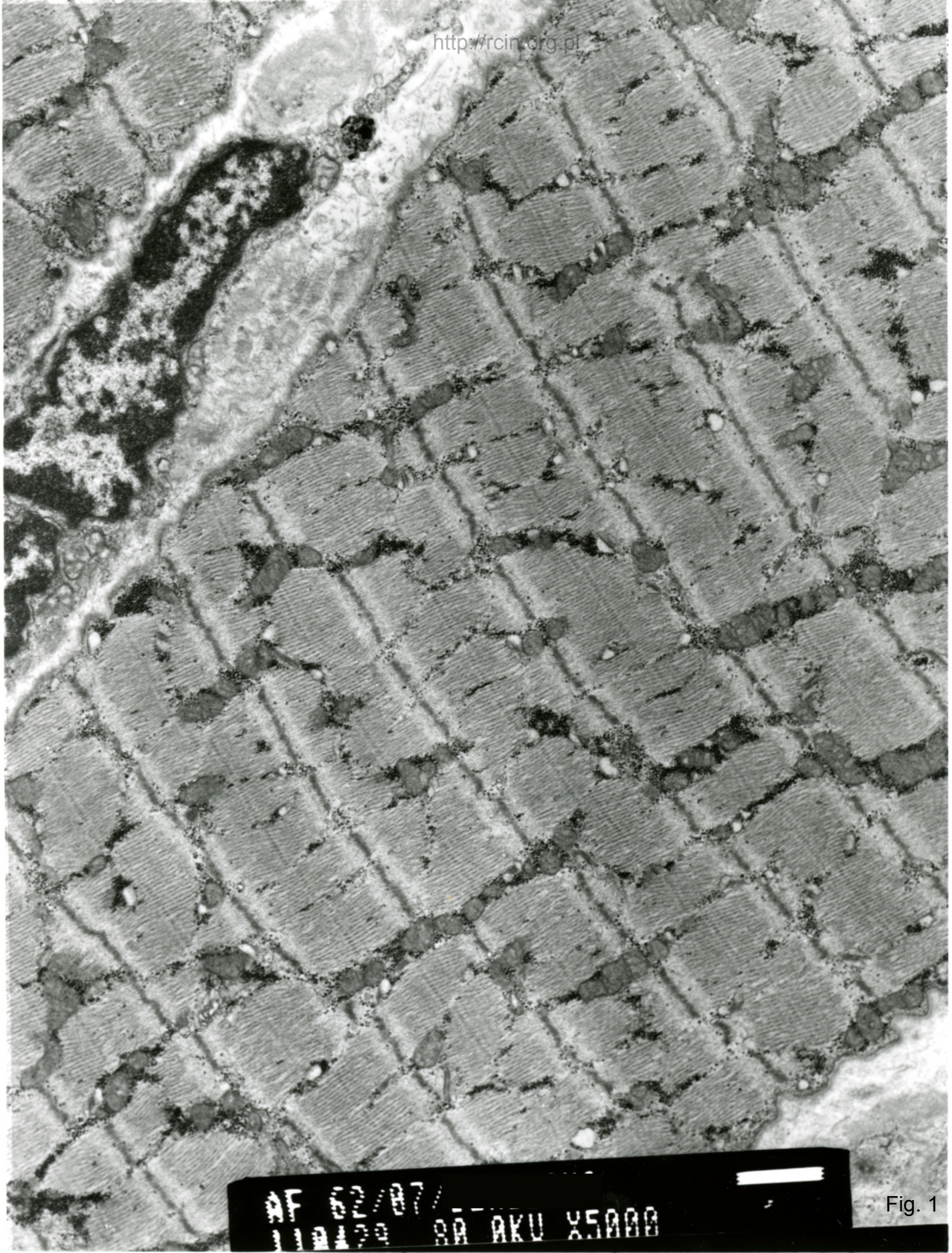
Fig. 1,2,3. W biopsji obserwuje się włókna mięśniowe o zachowanej strukturze miofibrilli i niezmiennym układzie sarkomerów oraz prawidłowych, podbłonowo położonych jądrach.

Fig. 4-9. Zmienione ultrastrukturalnie włókna mięśniowe o nieprawidłowym wzorze sarkomerowym i zaburzonym przebiegu miofibrilli, jądrach położonych zarówno podbłonowo jak ośrodkowo oraz licznych strukturach wakuolarnych.

Fig. 10,11. W przestrzeni pozakomórkowej widoczne naczynia kapilarne o śródbłonku wykazującym cechy nekrozy.

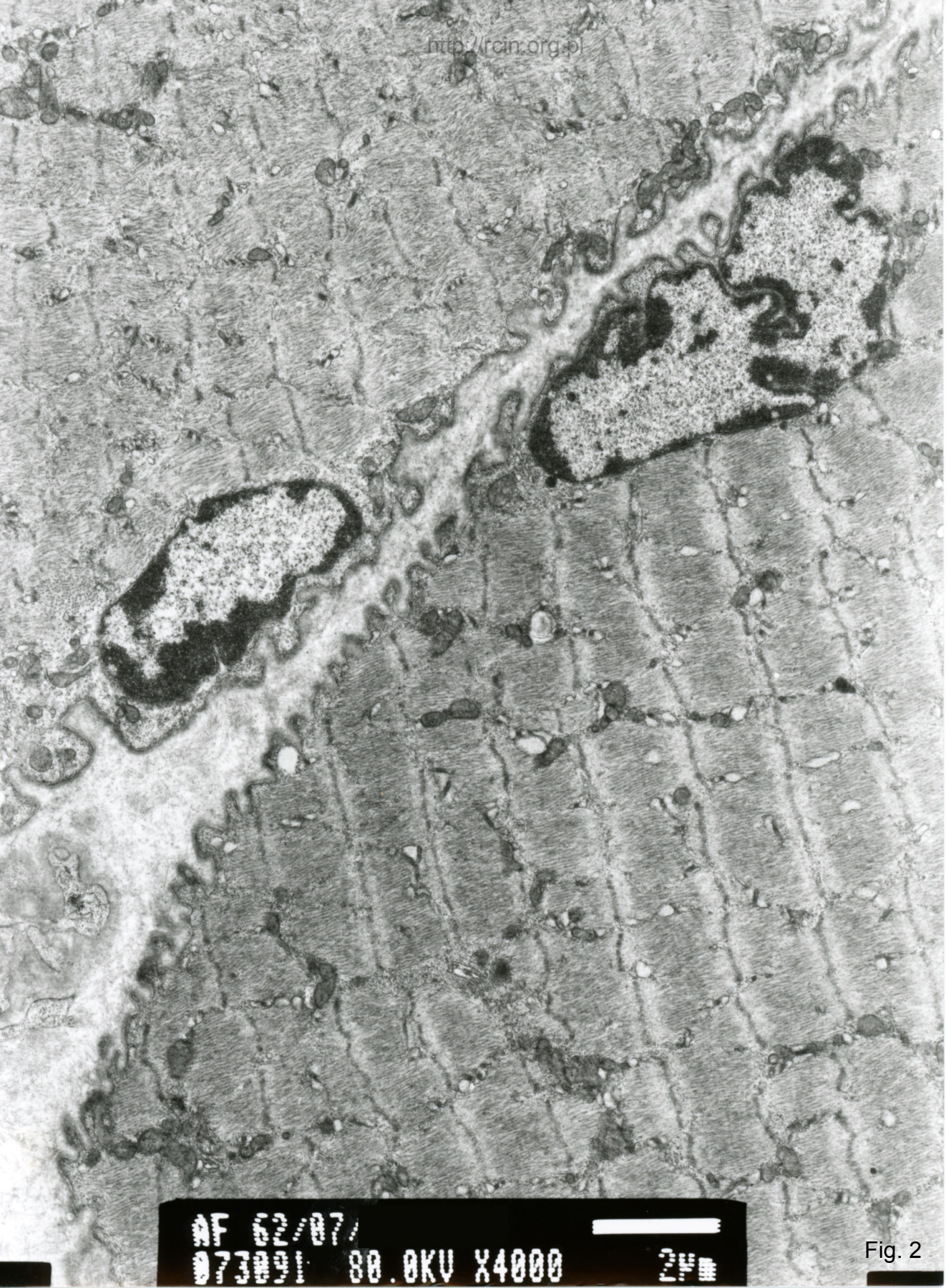
Summary

A biopsy of skeletal muscle was performed. Electronmicroscopy analysis revealed myofibres with preserved sarcomers and myofibrils structure and unchanged, submembranously located nuclei (Figs. 1,2,3). Ultrastructurally altered muscle fibers characterized by disorganized sarcomeres, scattered myofibrils and nuclei located both submembranously and centrally were observed. Numerous vacuolar structures were present (Figs. 4-9). In the extracellular space capillary vessels characterized by necrotic endothelium were visible (Figs.10,11).



AF 02/87
111429 SA AKU X5000

Fig. 1



AF 62/87/
073091 80.0KV X4000 24

Fig. 2



AF 62/07/
077004 80 AKU X5000

Fig. 3

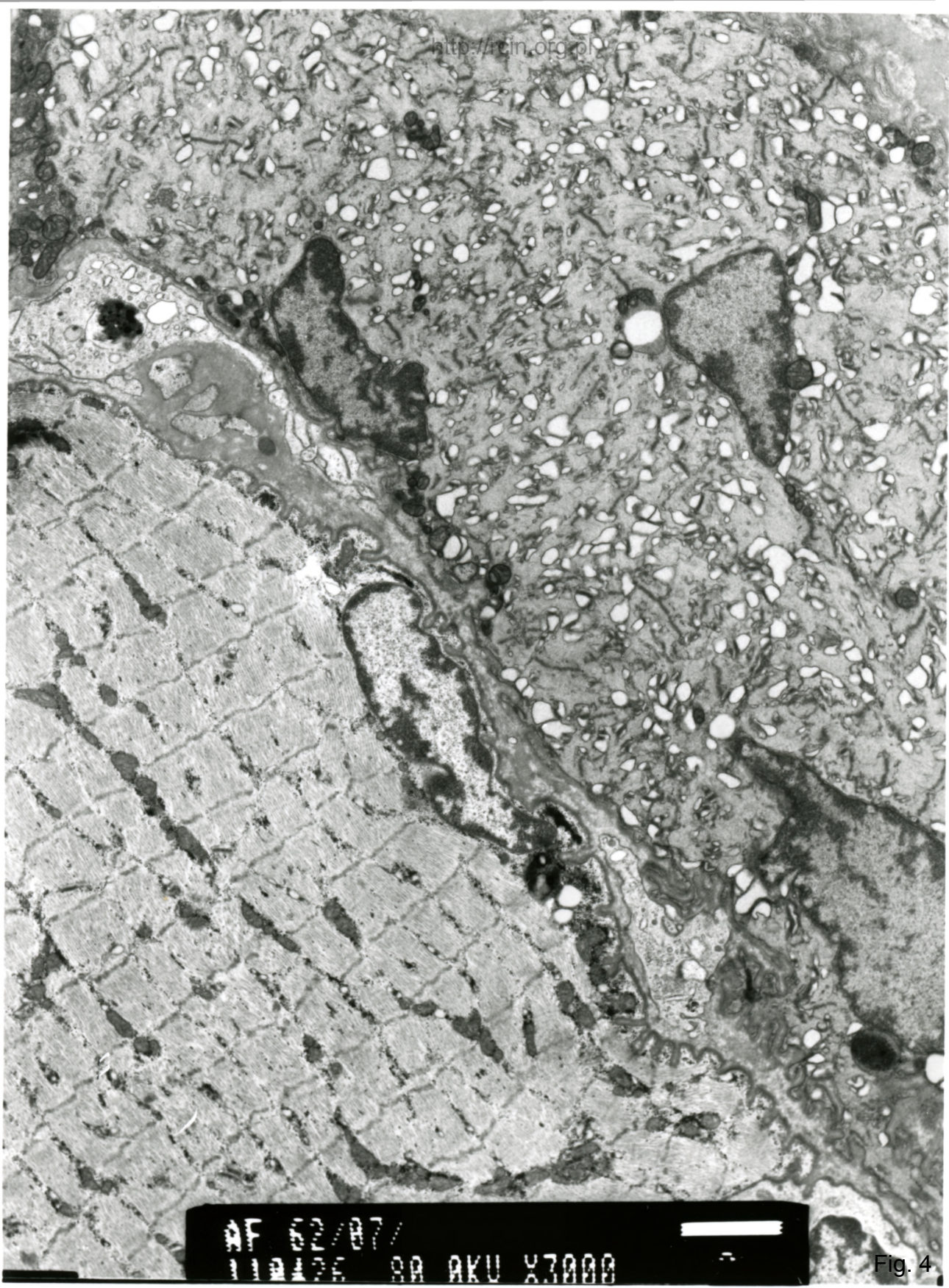
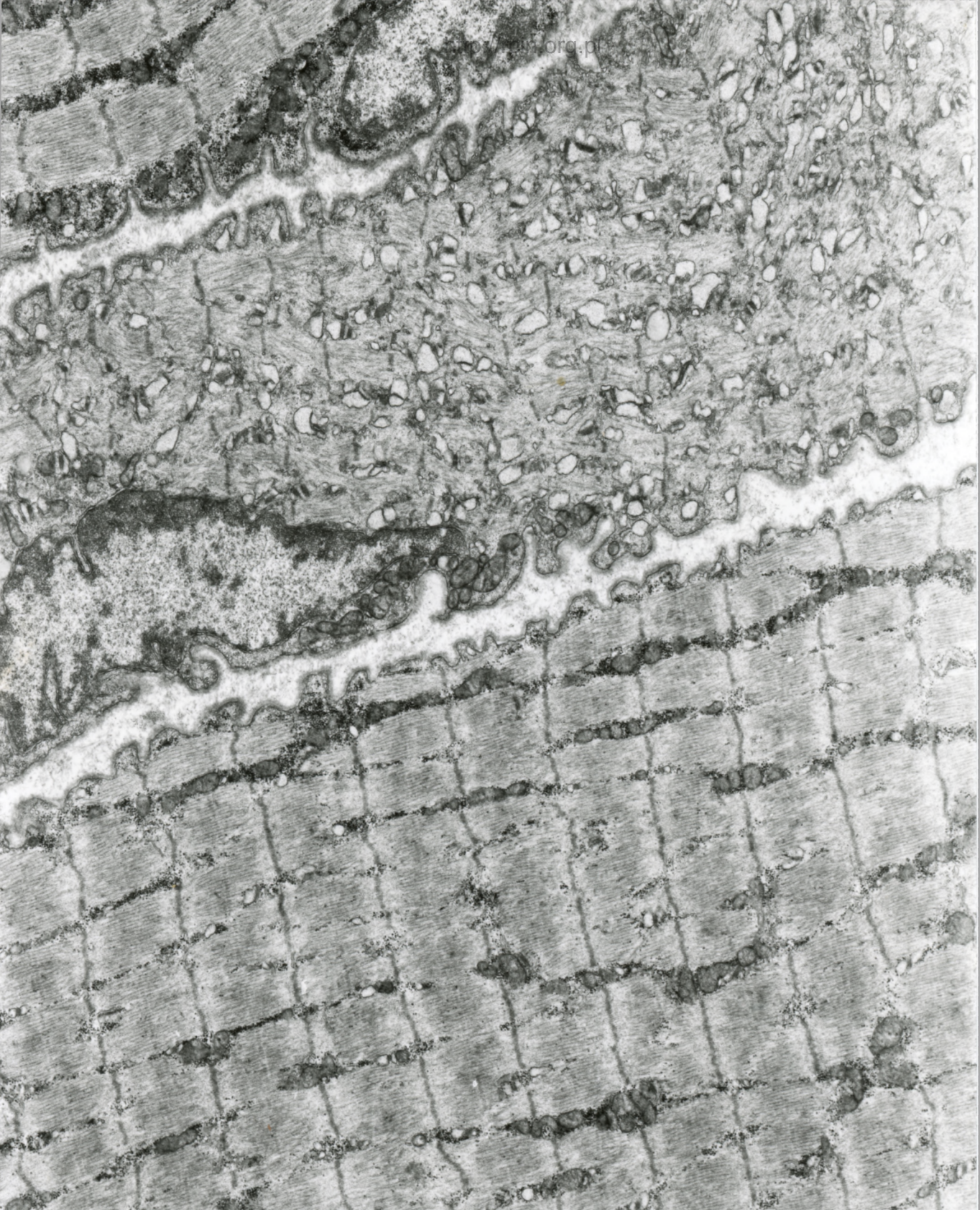
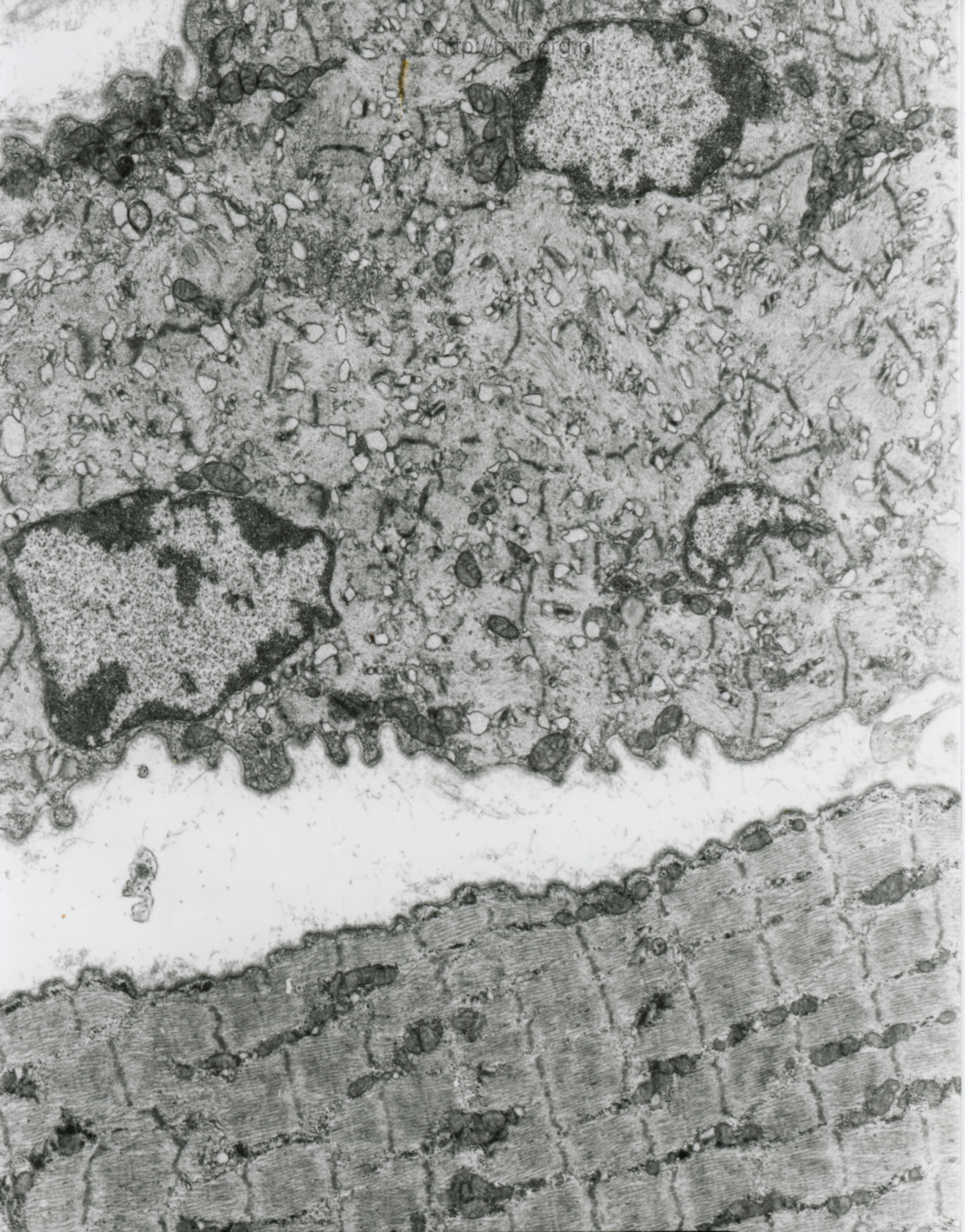


Fig. 4



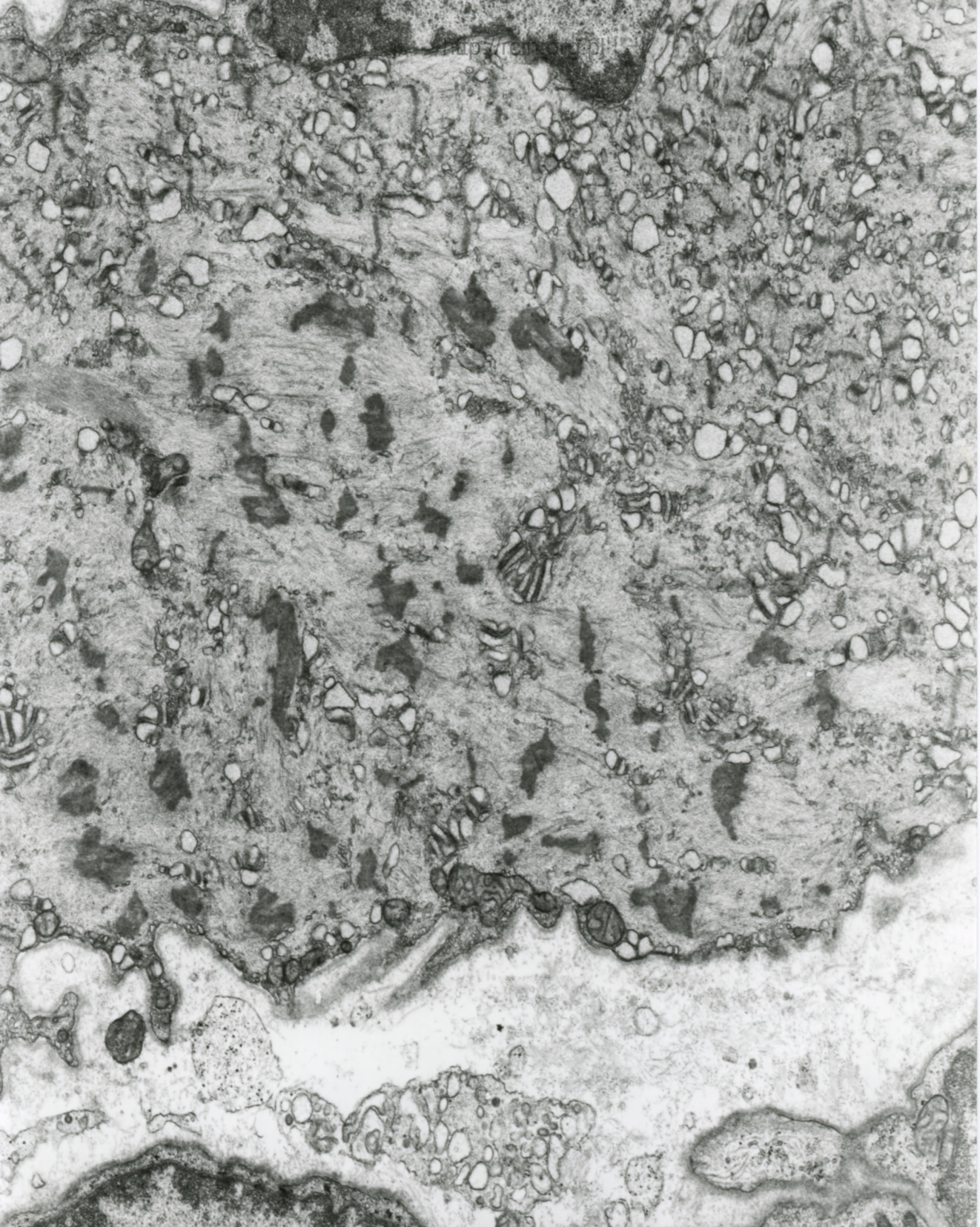
AF 62/07/
073000 80.0KV X4000 2µm

Fig. 5



AF 62/07/
073007 80 0KV X4000 20

Fig. 6



AF 62/07/
073090 80.0KV X5000

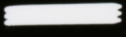
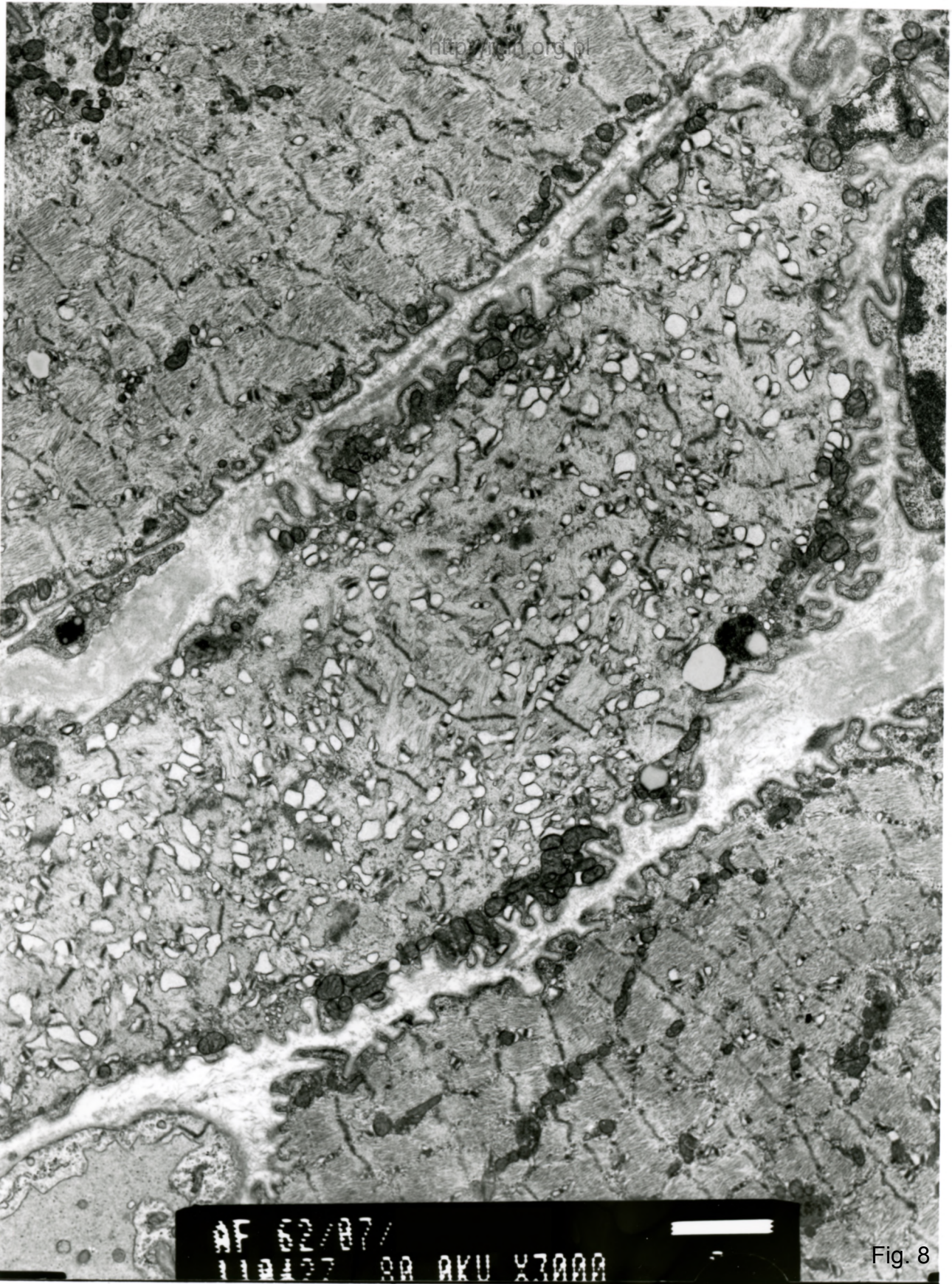
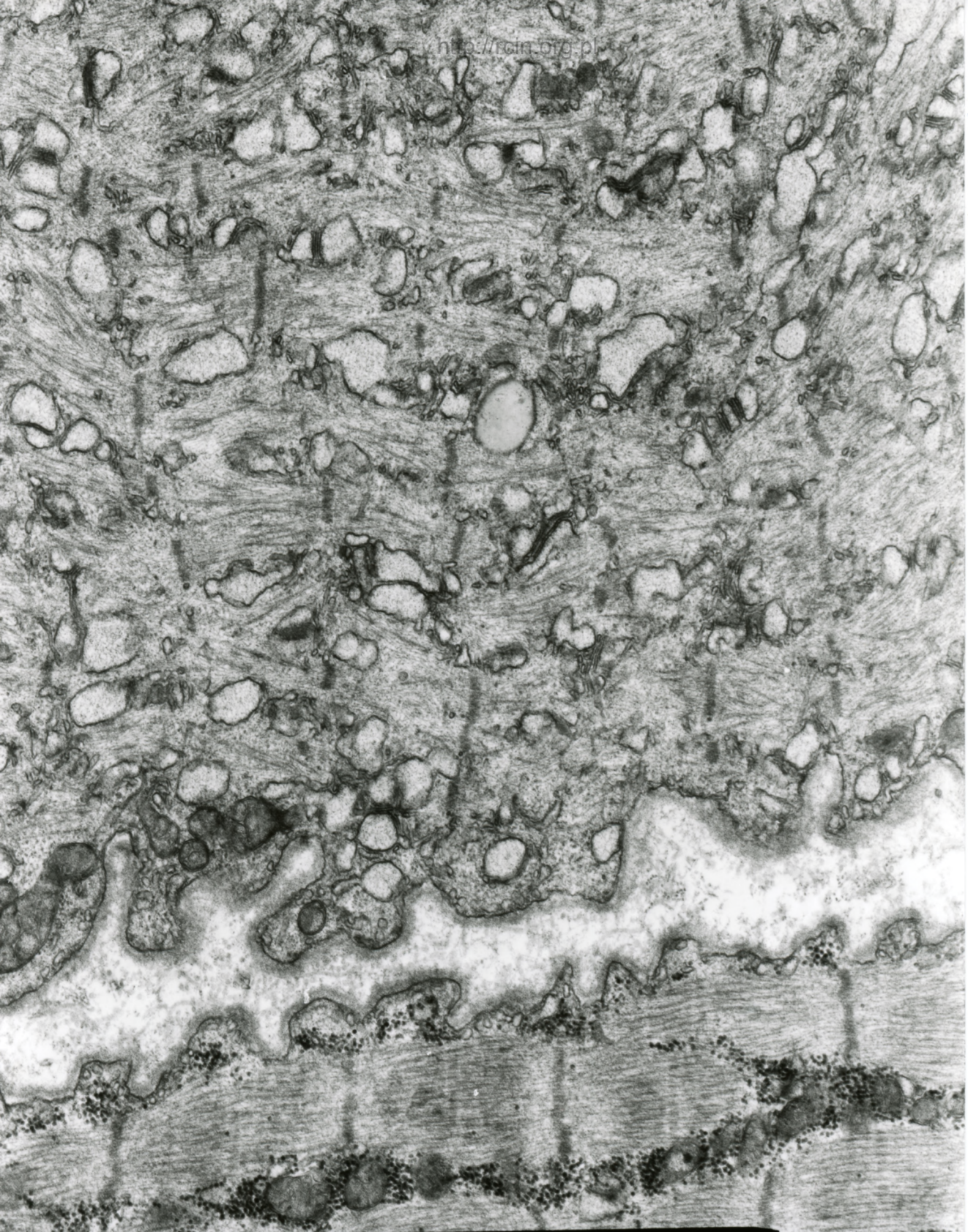


Fig. 7



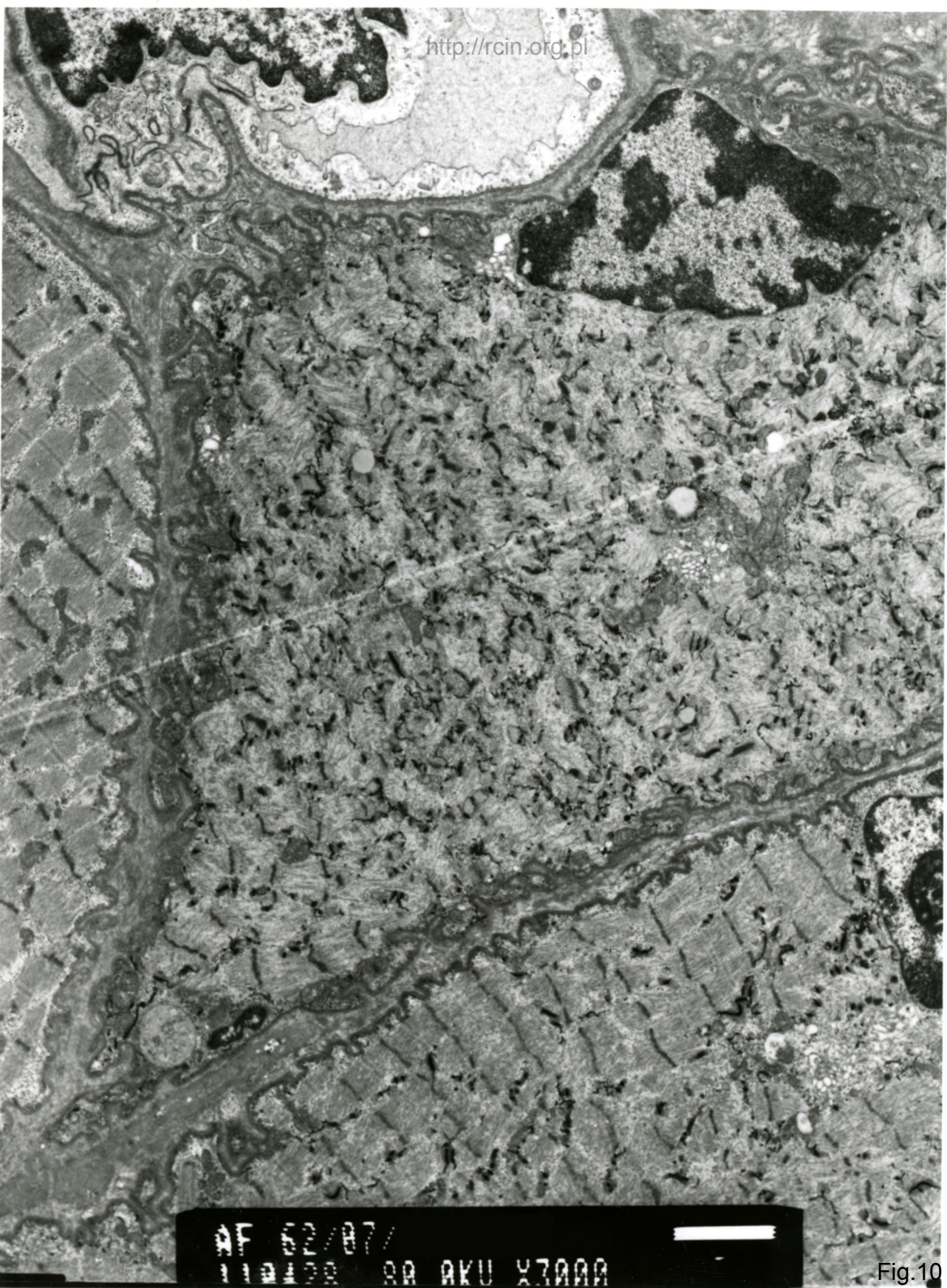
AF 52/87/
11/1/87 88 AKU X3000

Fig. 8



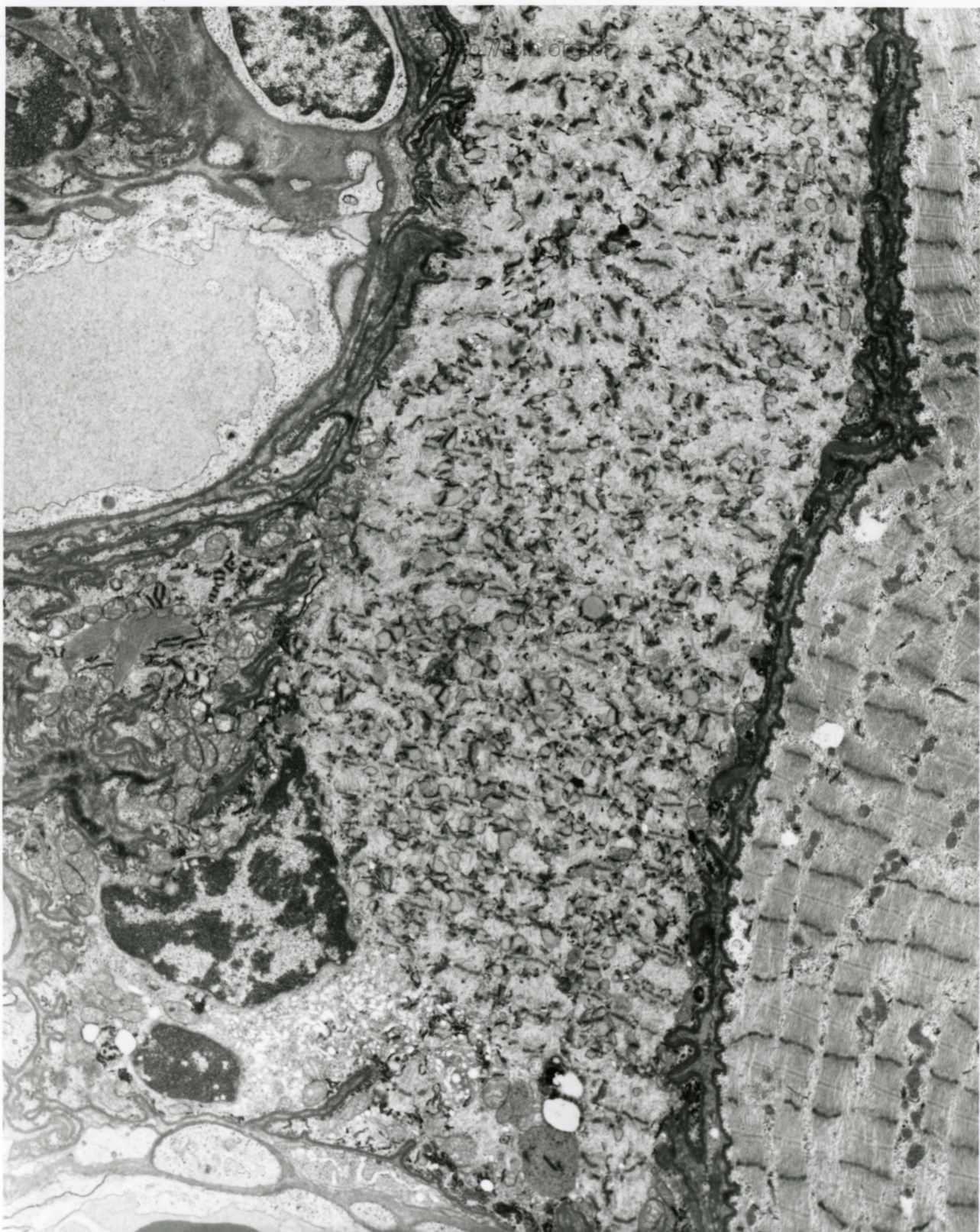
AF 62/07/
077000 8A 0KV X10K 500nm

Fig. 9



2F 02/87
11000 88 AKU X3000

Fig.10



AF 62/07/
110420 80.0KV X2500

Fig.11