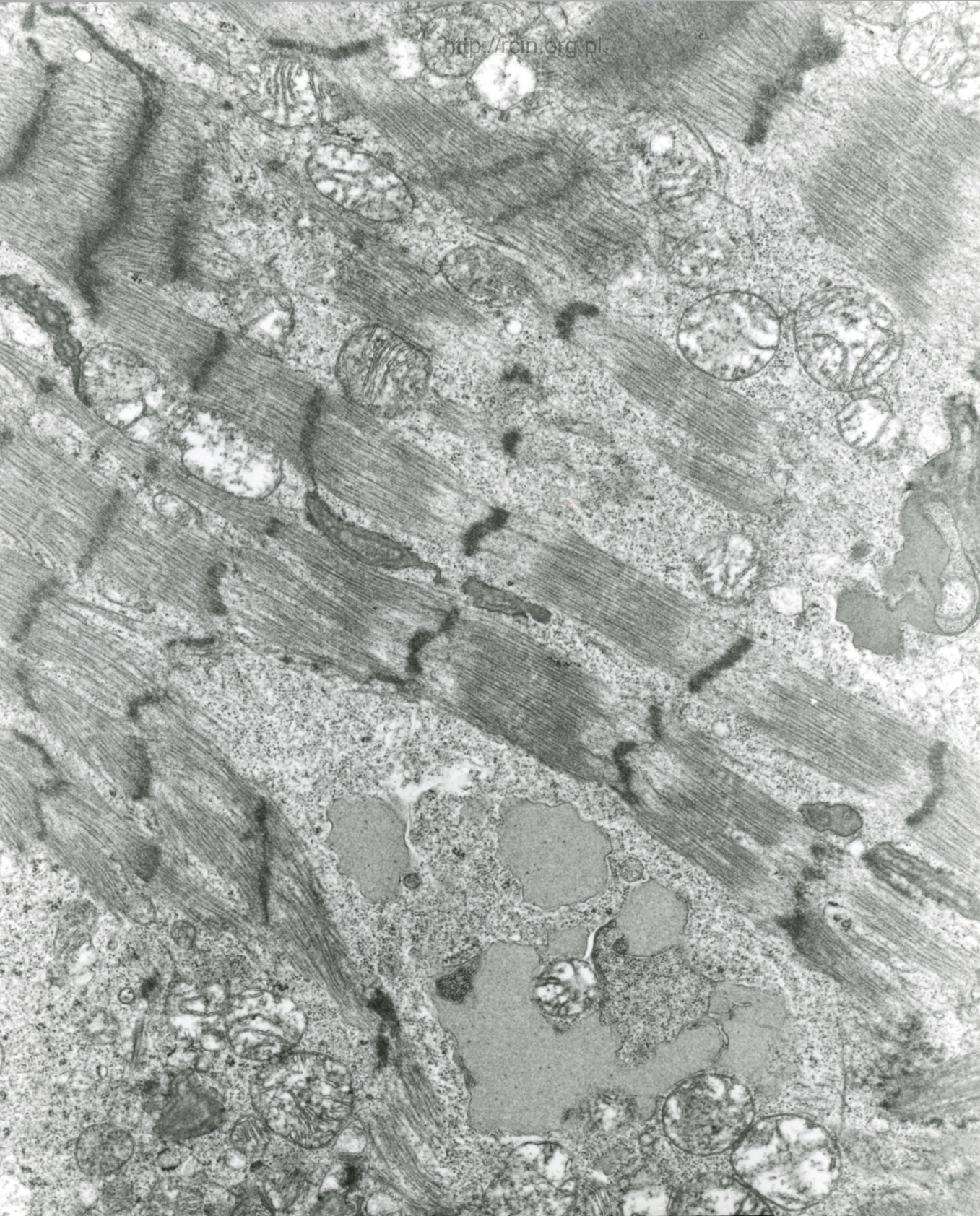


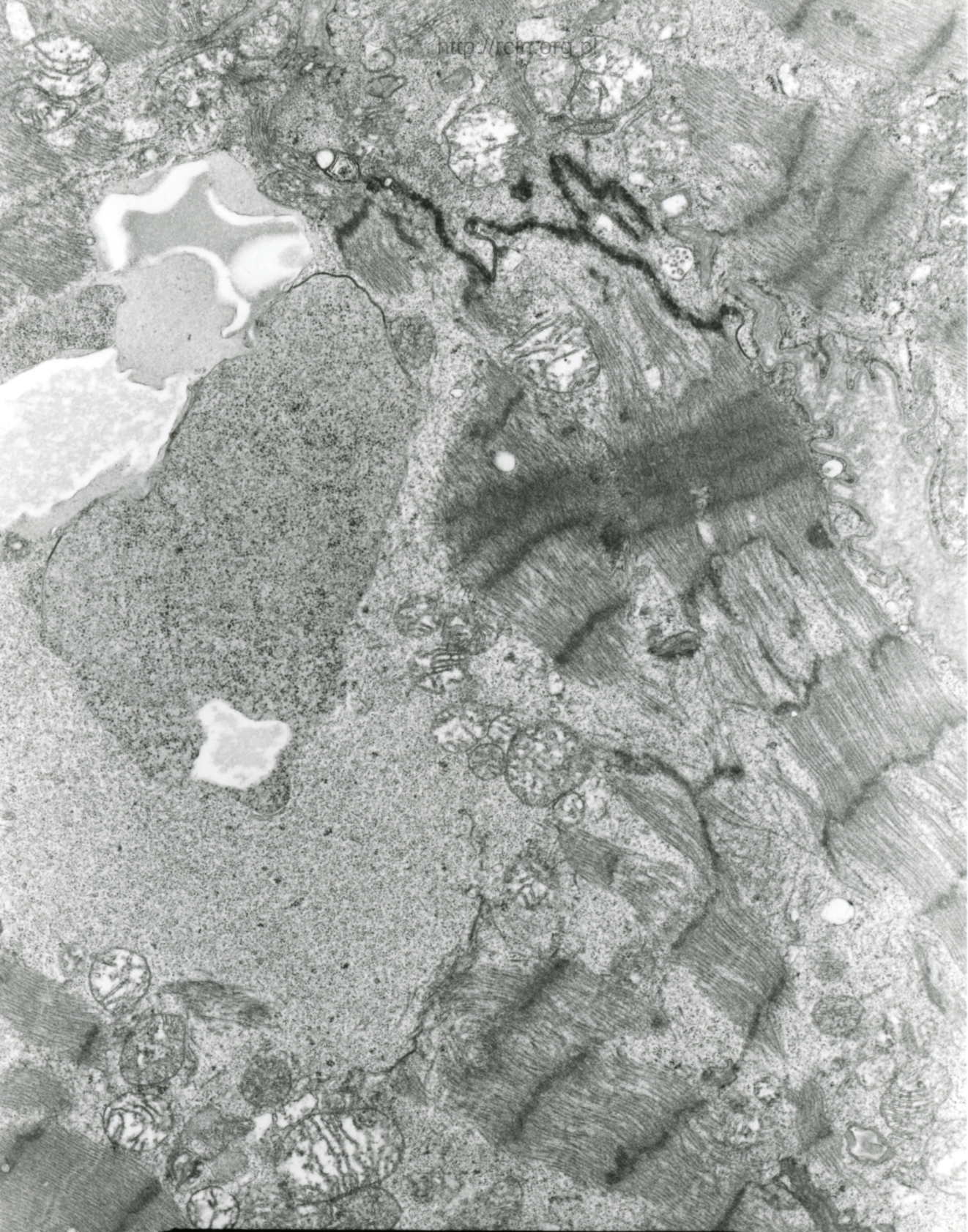
AF 72/07/SERCE/SK
074280 80.0KV X4000 2µm

Fig. 1

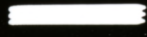


AF 72/07/SERCE/SK
074284 80.0KV X7500 14

Fig. 2

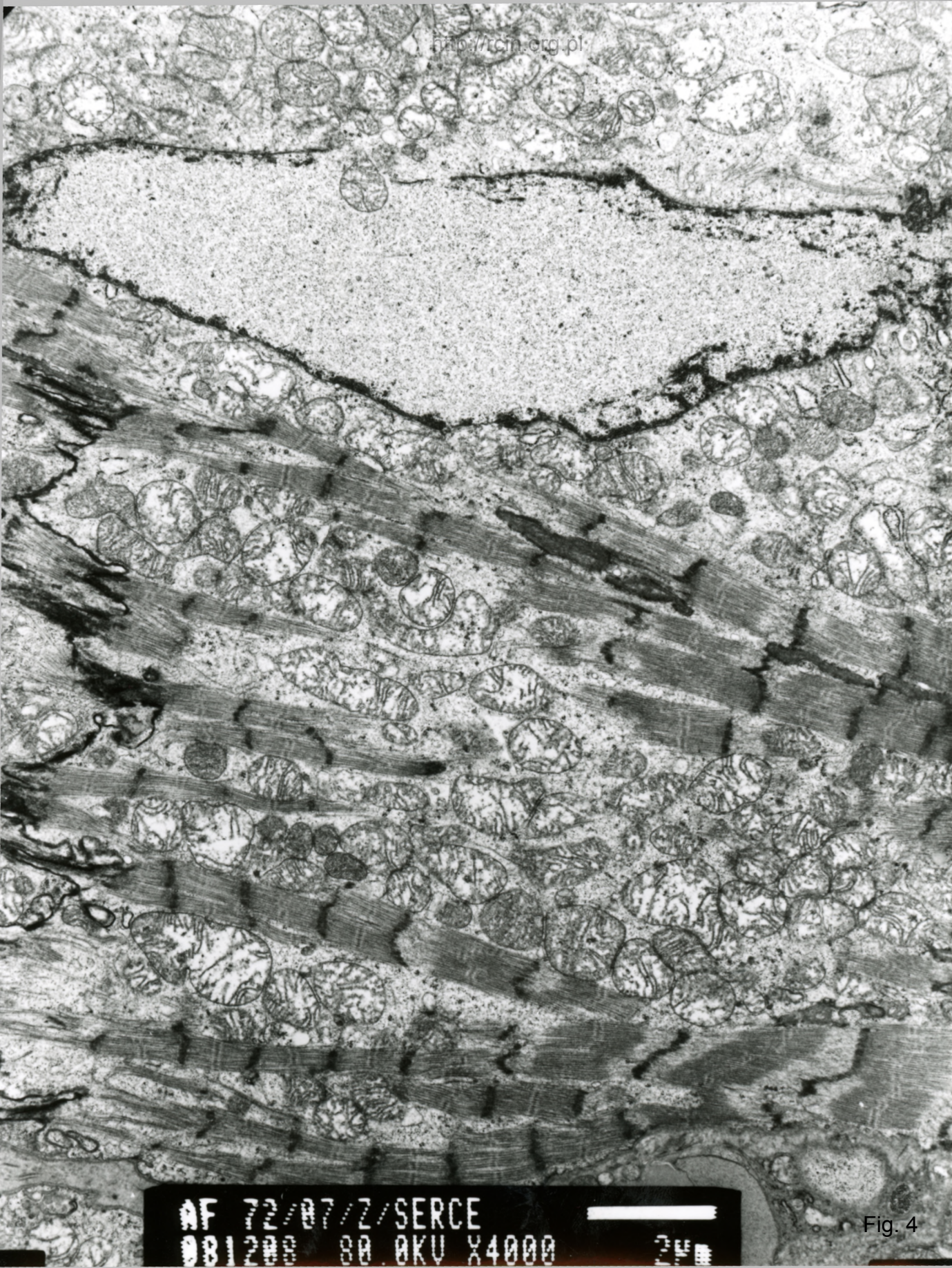


AF 72/07/SERCE/SK
074282 80.0KV X6000



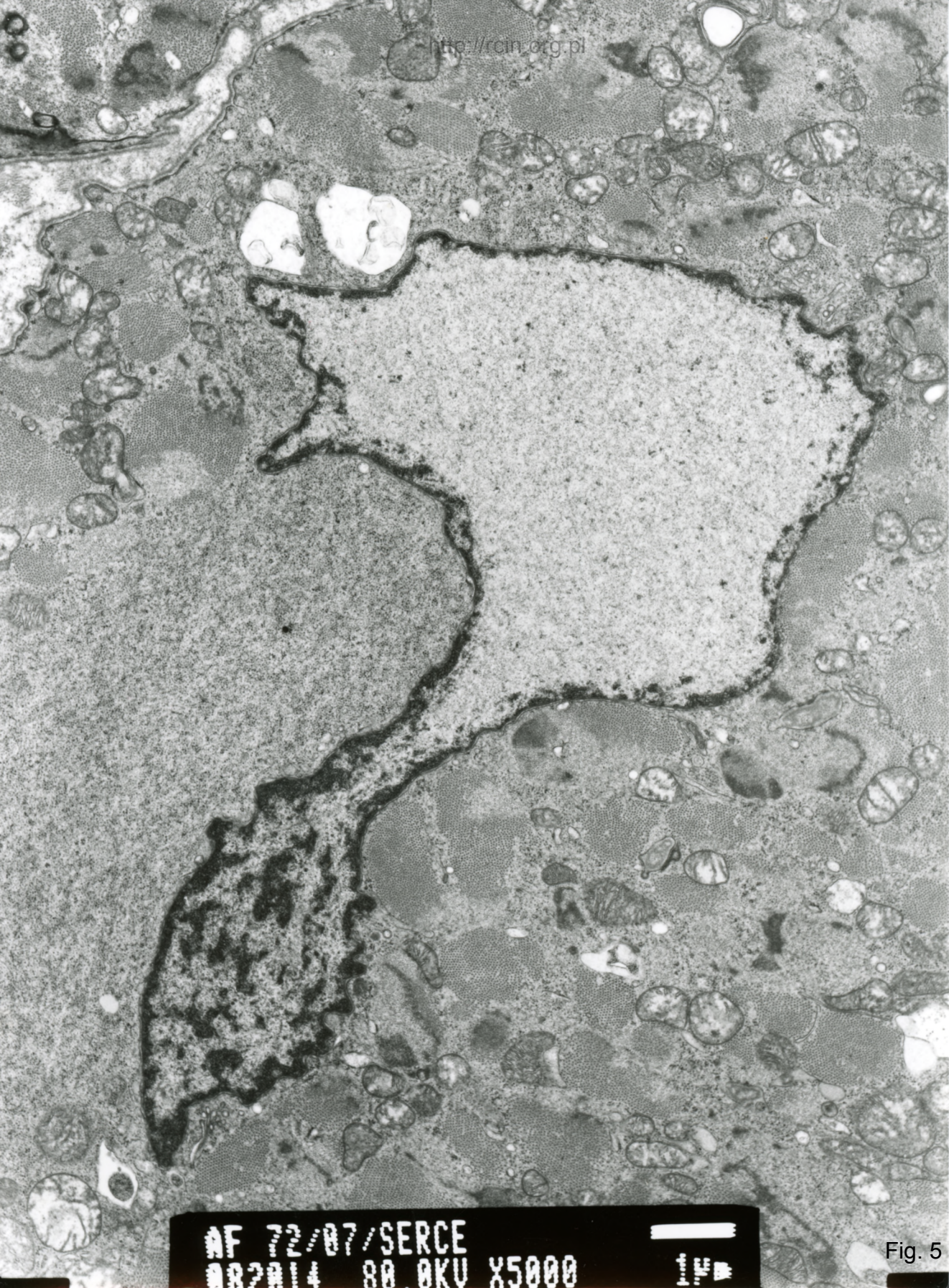
1µm

Fig. 3

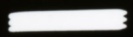


AF 72/07/Z/SERCE
081200 80.0KV X4000 2µm

Fig. 4

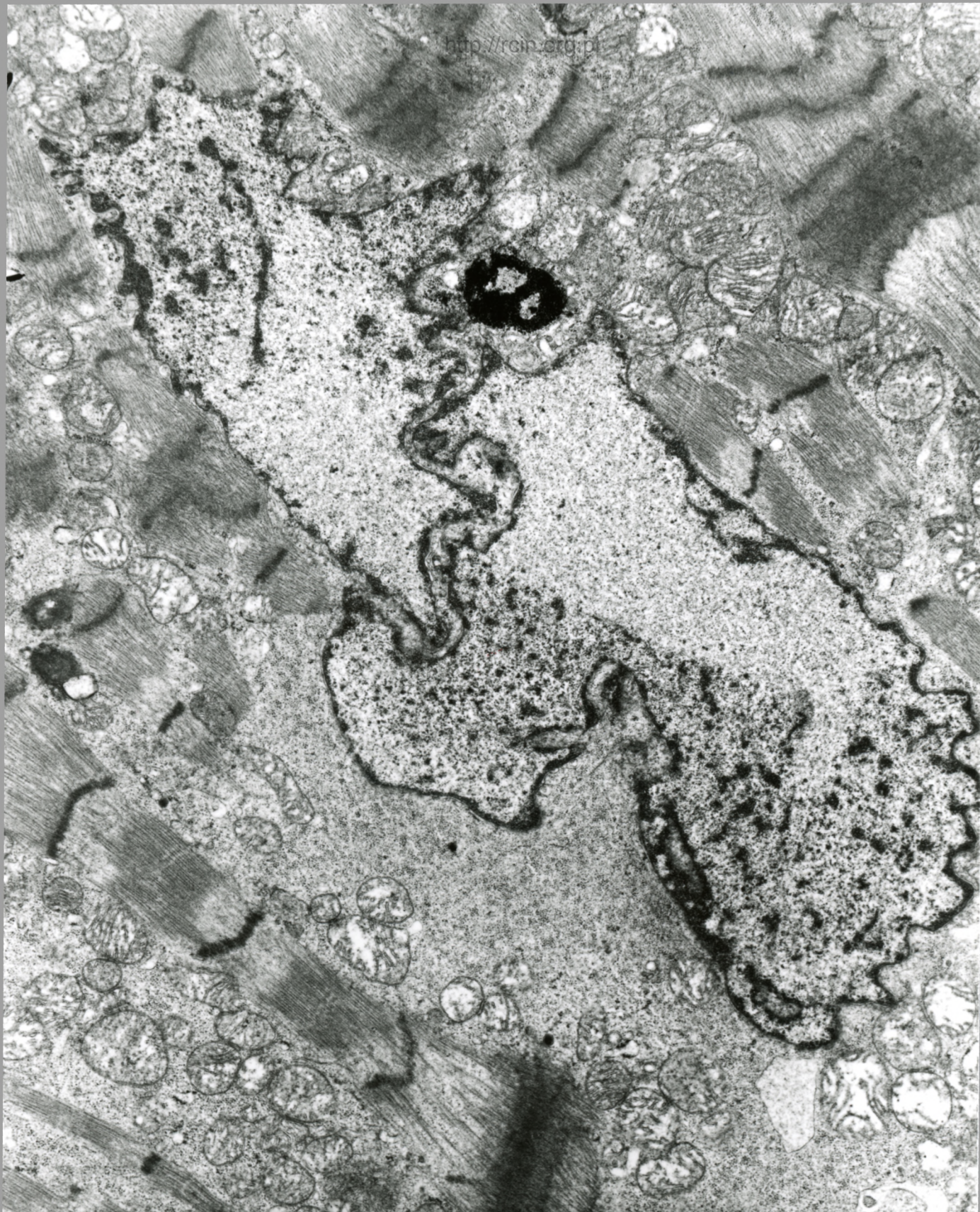


AF 72/07/SERCE
002014 80.0KV X5000

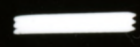


1 μm

Fig. 5



AF 72/07/Z/SERCE
081207 80.0KV X5000



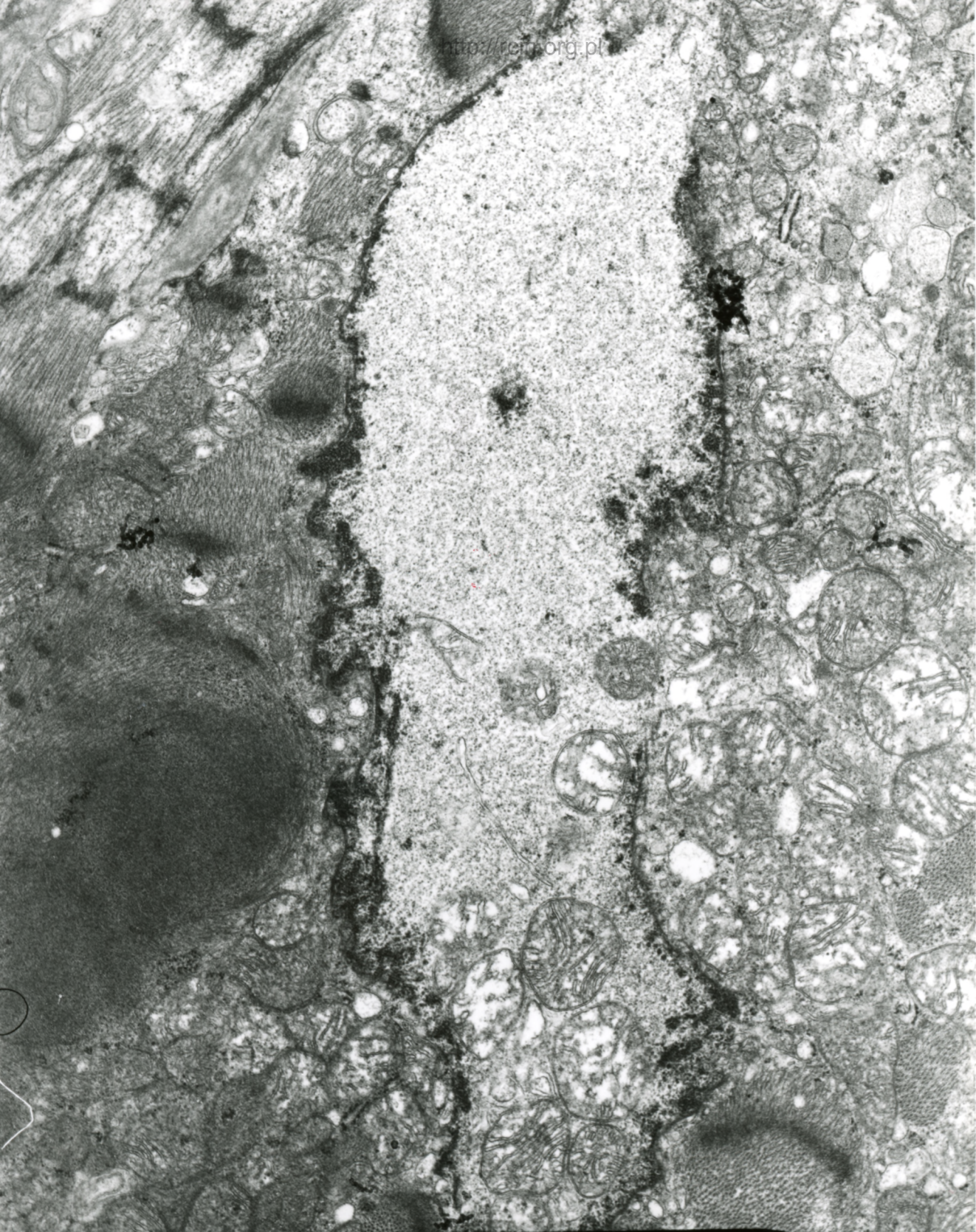
1 μm

Fig. 6



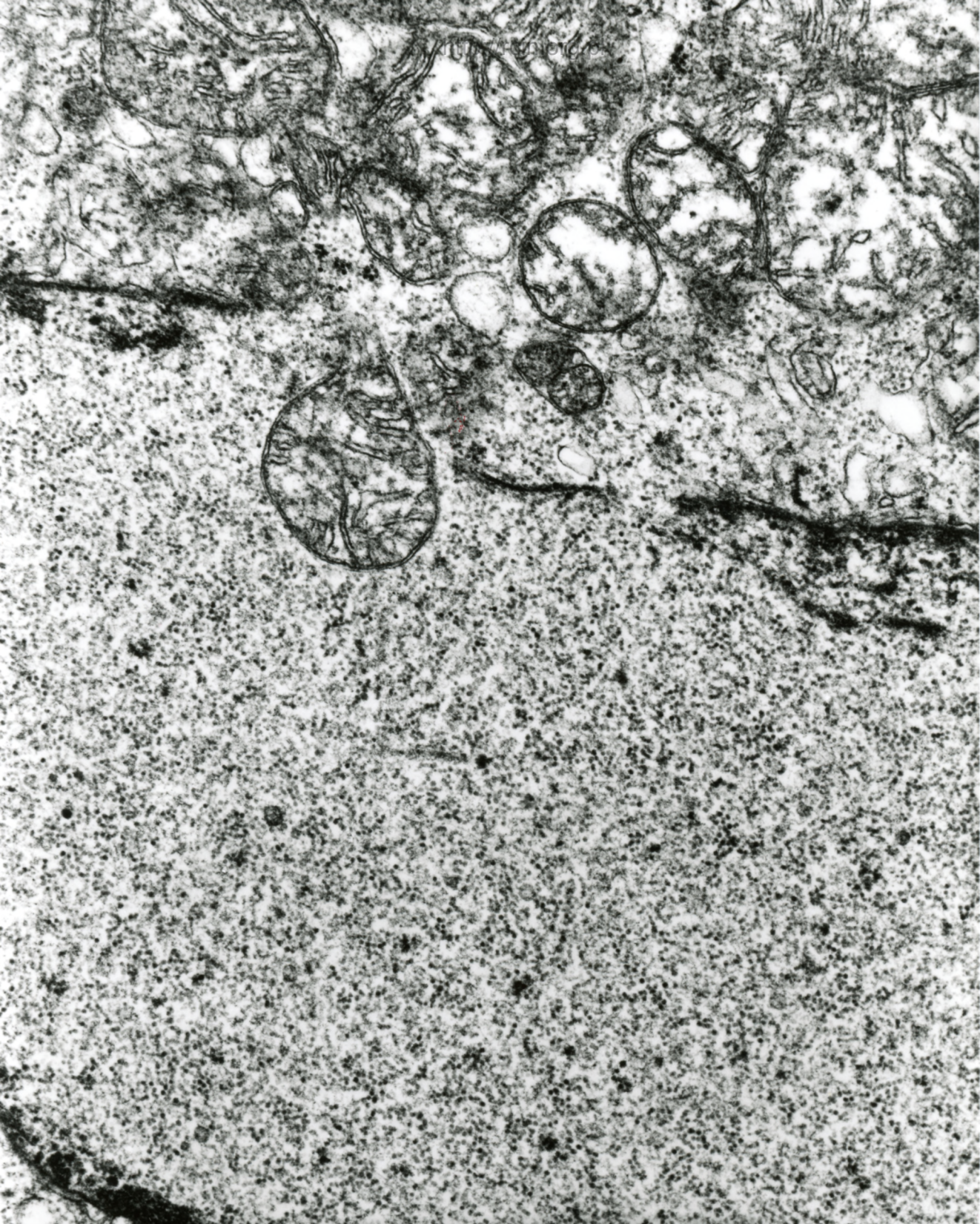
AF 72/07/SERCE
001304 80 BKU X4000 25

Fig. 7



AF 72/07
082027 80.0KV X7500 1µm

Fig. 8



AF 72/07/Z/SERCE
001209 80.0KV X15K 500nm

Fig. 9



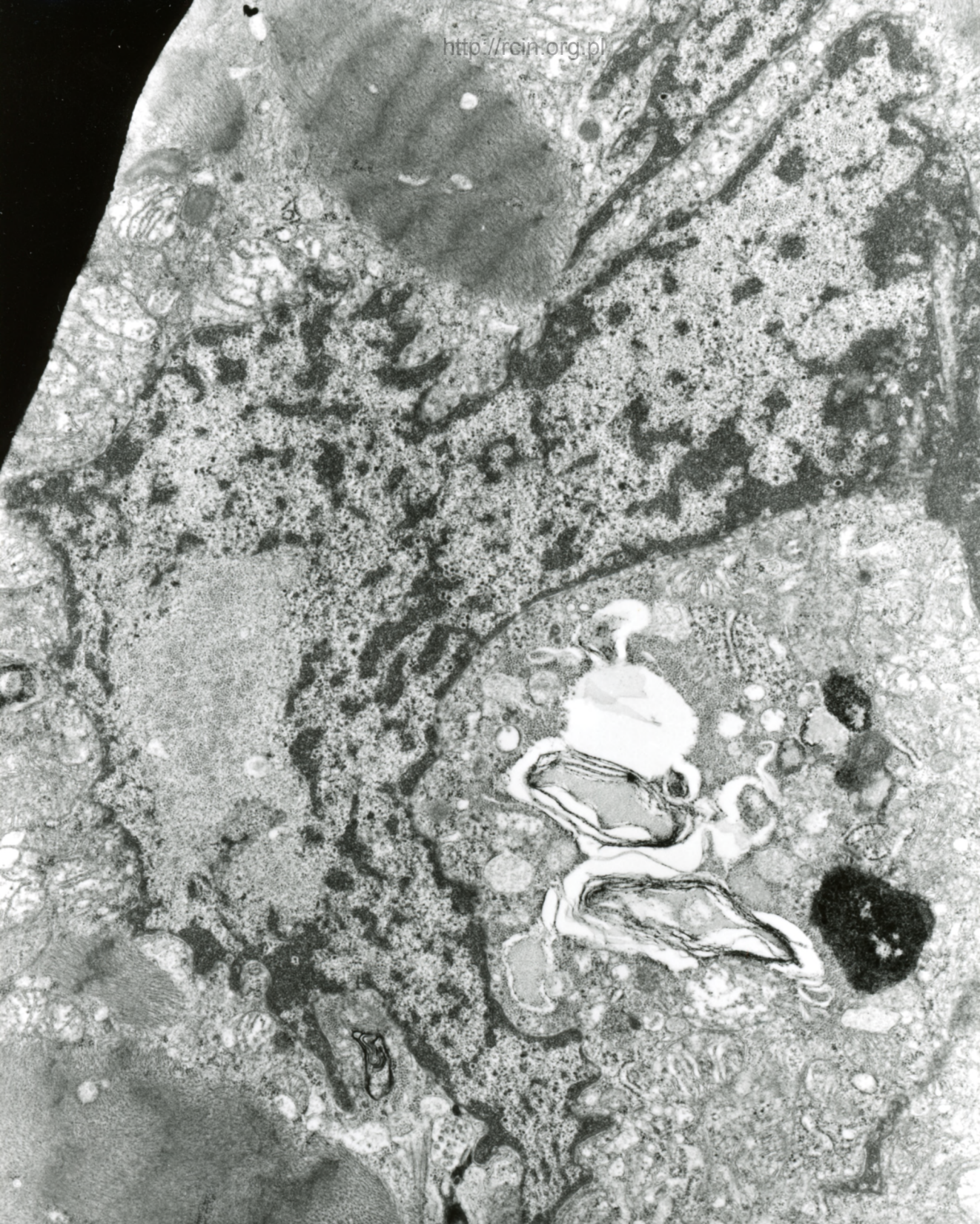
AF 72/07/SERCE/SK
074274 80 0KV X7500

Fig.10



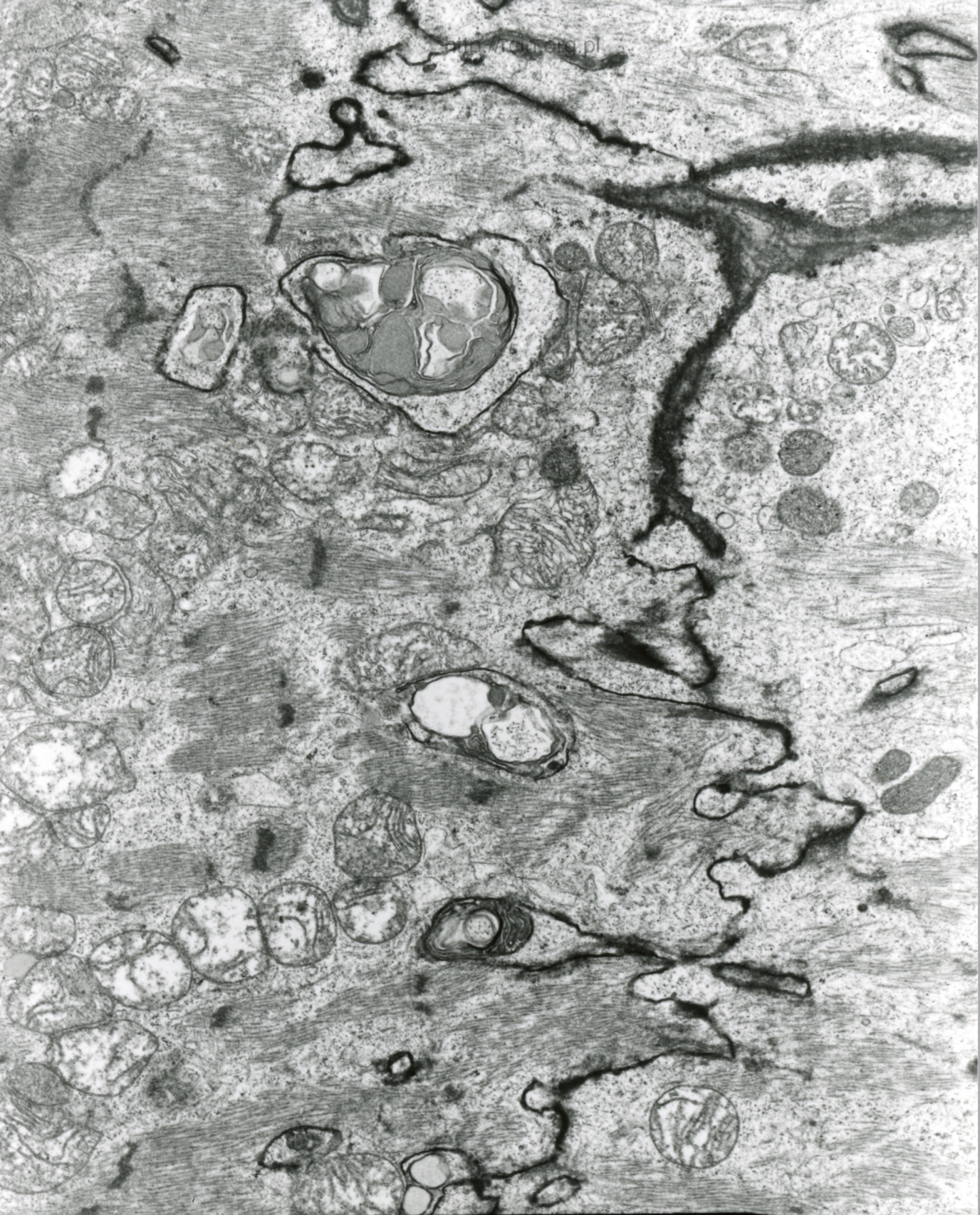
AF 72/07
080623 80.0KV X4000 24μ

Fig.11



AF 72/07/SERCE/SK
074285 80.0KV X6000

Fig.12



AF 72/07/SERCE/SK
074290 80.0KV X6000

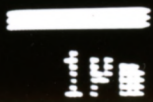
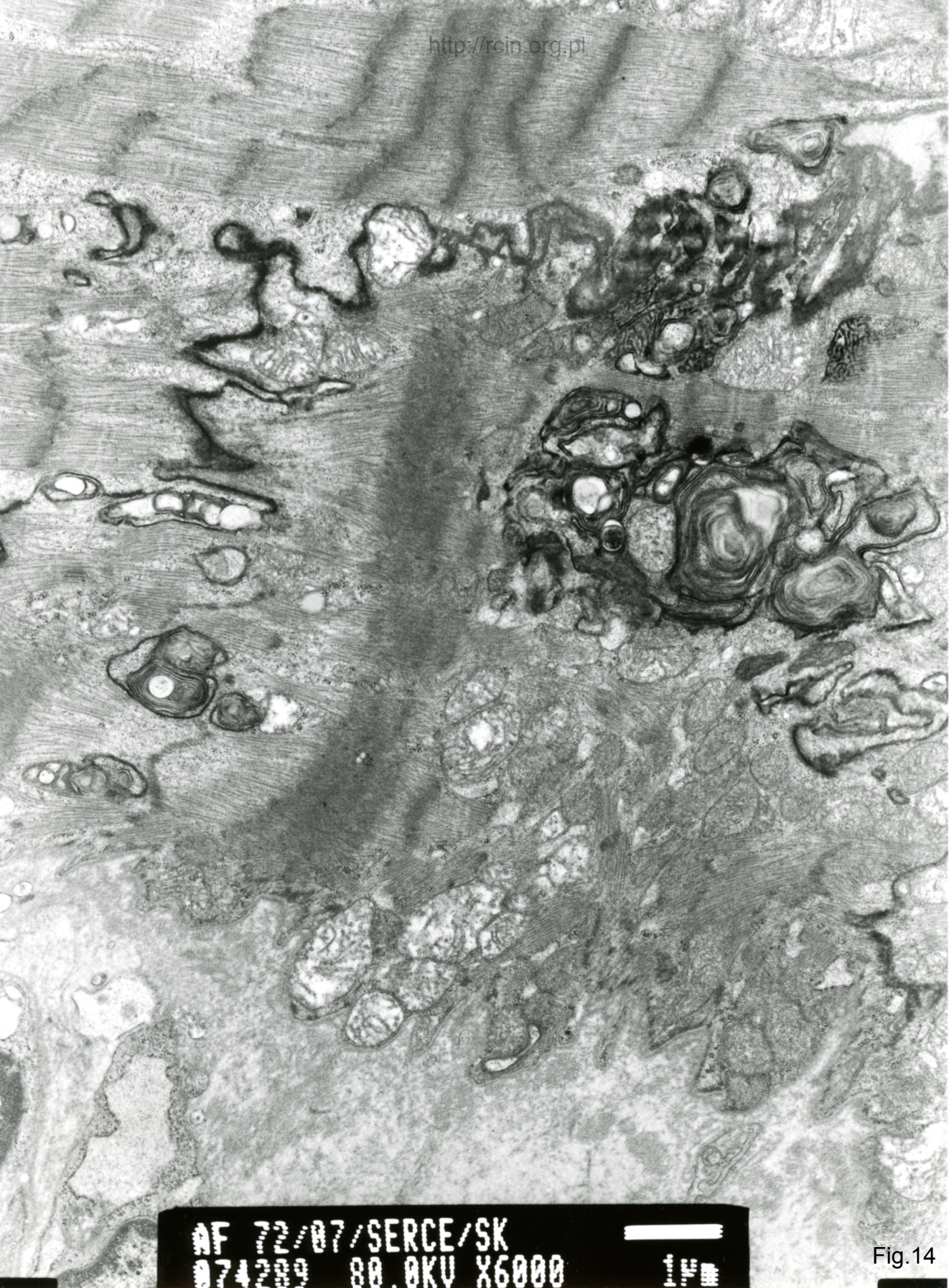
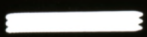


Fig.13

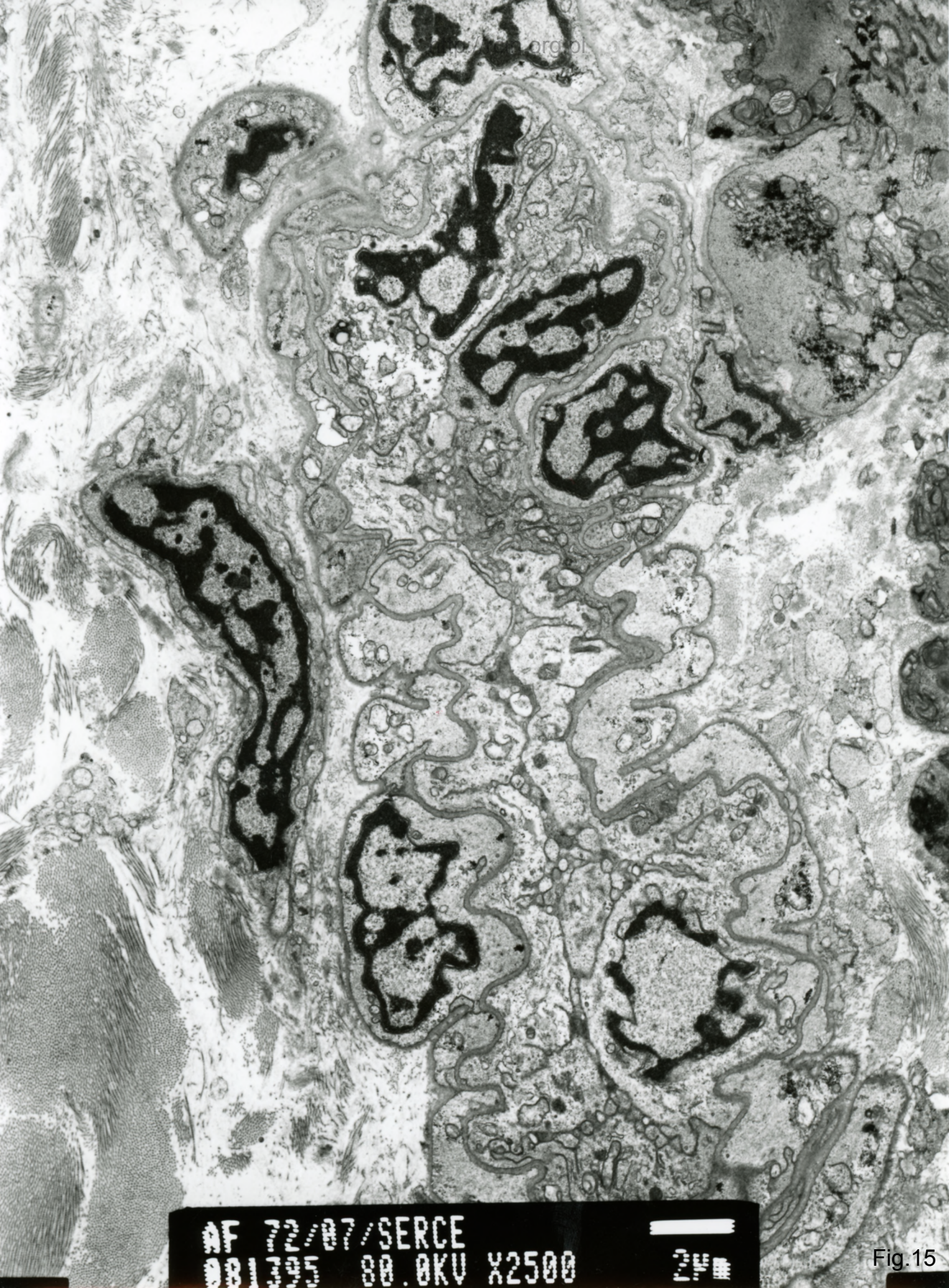


AF 72/07/SERCE/SK
074209 80.0KV X6000



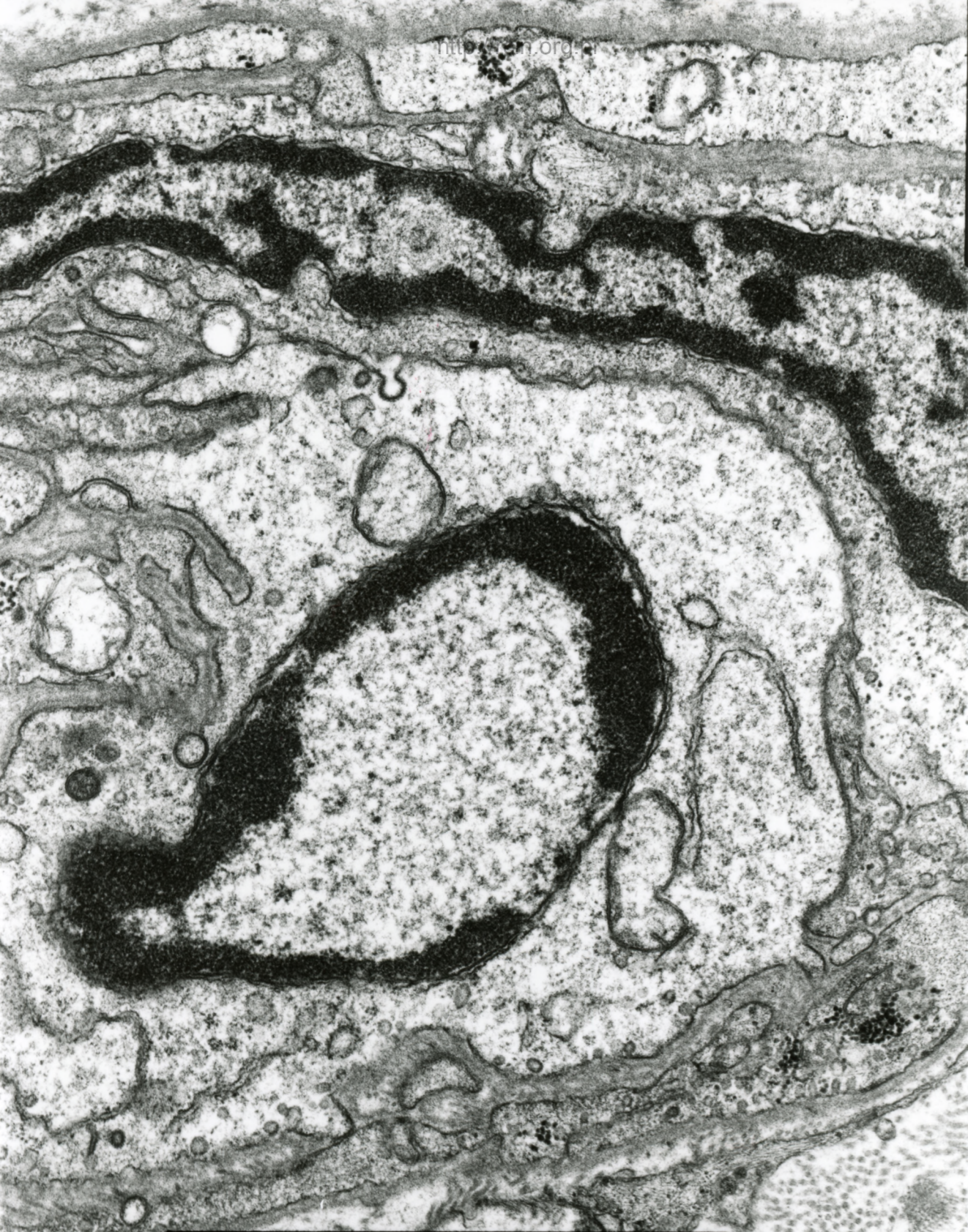
1 μm

Fig.14



AF 72/07/SERCE
081395 80.0KV X2500 24

Fig.15



AF 72/07/J/SERCE
001402 80.0KV X10K 500nm

Fig.16

72/07

Zapalenie mięśnia sercowego

W ocenie ultrastrukturalnej widoczne ogniskowo zaburzenia w przebiegu miofilamentów i ich dezorganizacja (Fig. 1, 2,3). W niektórych kardiomiocytach w sąsiedztwie zmienionych ultrastrukturalnie jąder komórkowych obecne są zdeorganizowane sarkomery i rozproszone miofilamenty (Fig. 4,5,6,7). Często na takim obszarze lizy miofilamentów obserwowano agregację mitochondriów charakteryzujących się jasną elektronowo macierzą. Jądra komórkowe większości kardiomiocytów charakteryzują się przerwaniem ciągłości otoczki jądrowej i jasną chromatyną (Fig. 8, 9). W sarkoplazmie i w sąsiedztwie zmienionych ultrastrukturalnie jąder licznie występowały struktury autofagalne (Fig. 10, 11, 12,13,14). W przestrzeni zewnątrzkomórkowej obserwowano naczynia kapilarne o charakterze pętli. Komórki śródbłonna naczyń charakteryzowały się jasną cytoplazmą (Fig. 15,16).

Myocarditis

Electronmicroscopy evaluation revealed focal changes in the course of myofilaments and their disorganization (Figs. 1,2,3). In some cardiomyocytes ultrastructurally disorganized sarcomeres and scattered myofilaments were present in the vicinity of altered cell nuclei (Figs. 4,5,6,7). Often in such an area of myofilament lysis an aggregation of mitochondria characterized by a light electron matrix was observed. Most of cardiomyocytes nuclei were characterized by discontinuity of the nuclear membrane and bright chromatin (Figs. 8, 9). In sarcoplasm, and in the vicinity of ultrastructurally altered nuclei numerous autophagal structures were seen (Figs. 10, 11, 12,13,14). In the extracellular space capillary vessels forming loops were observed. Vascular endothelial cells were characterized by a bright cytoplasm (Fig. 15,16).