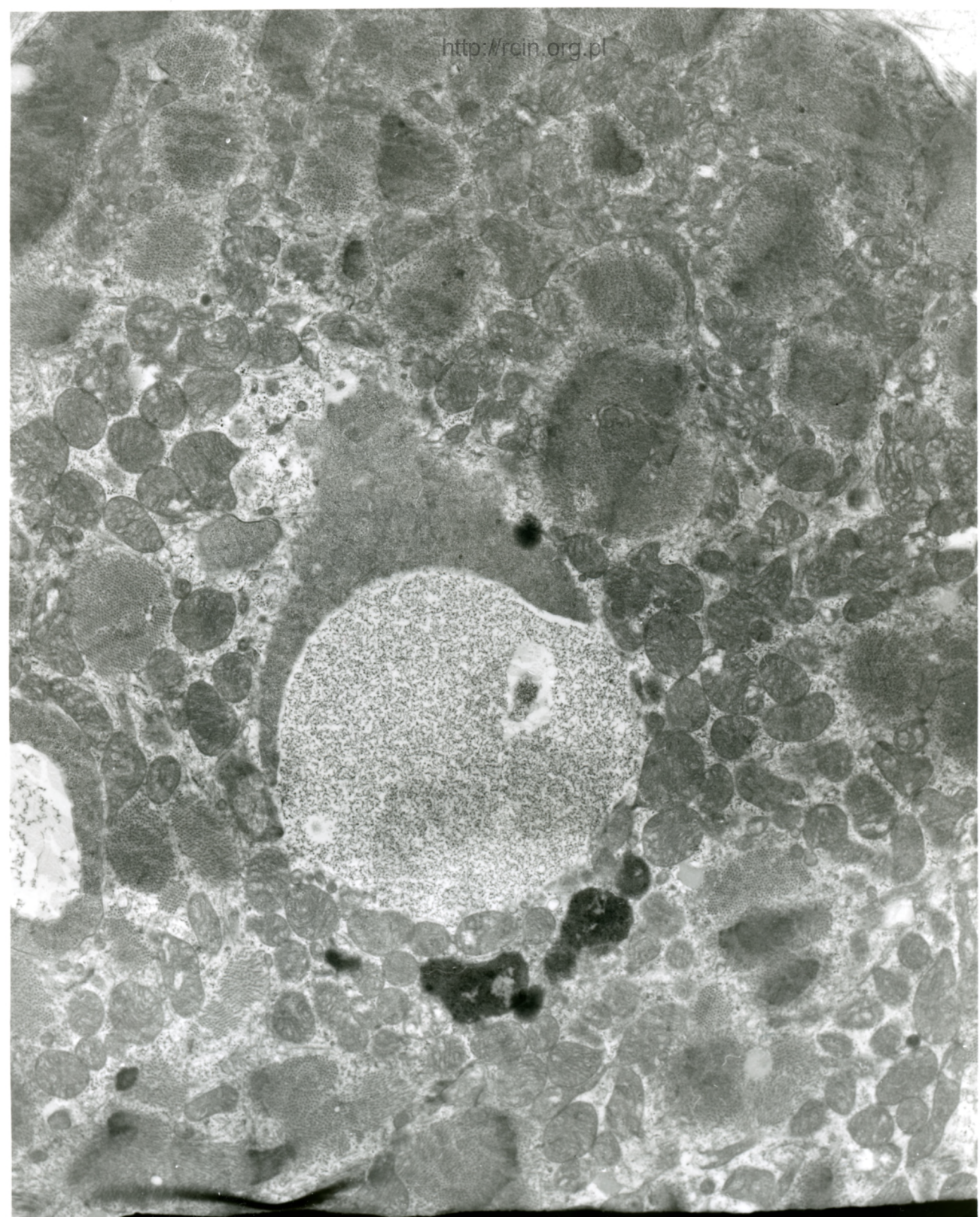
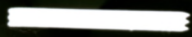


AF 31/010/  
101071 80.0KV X5000

Fig. 1

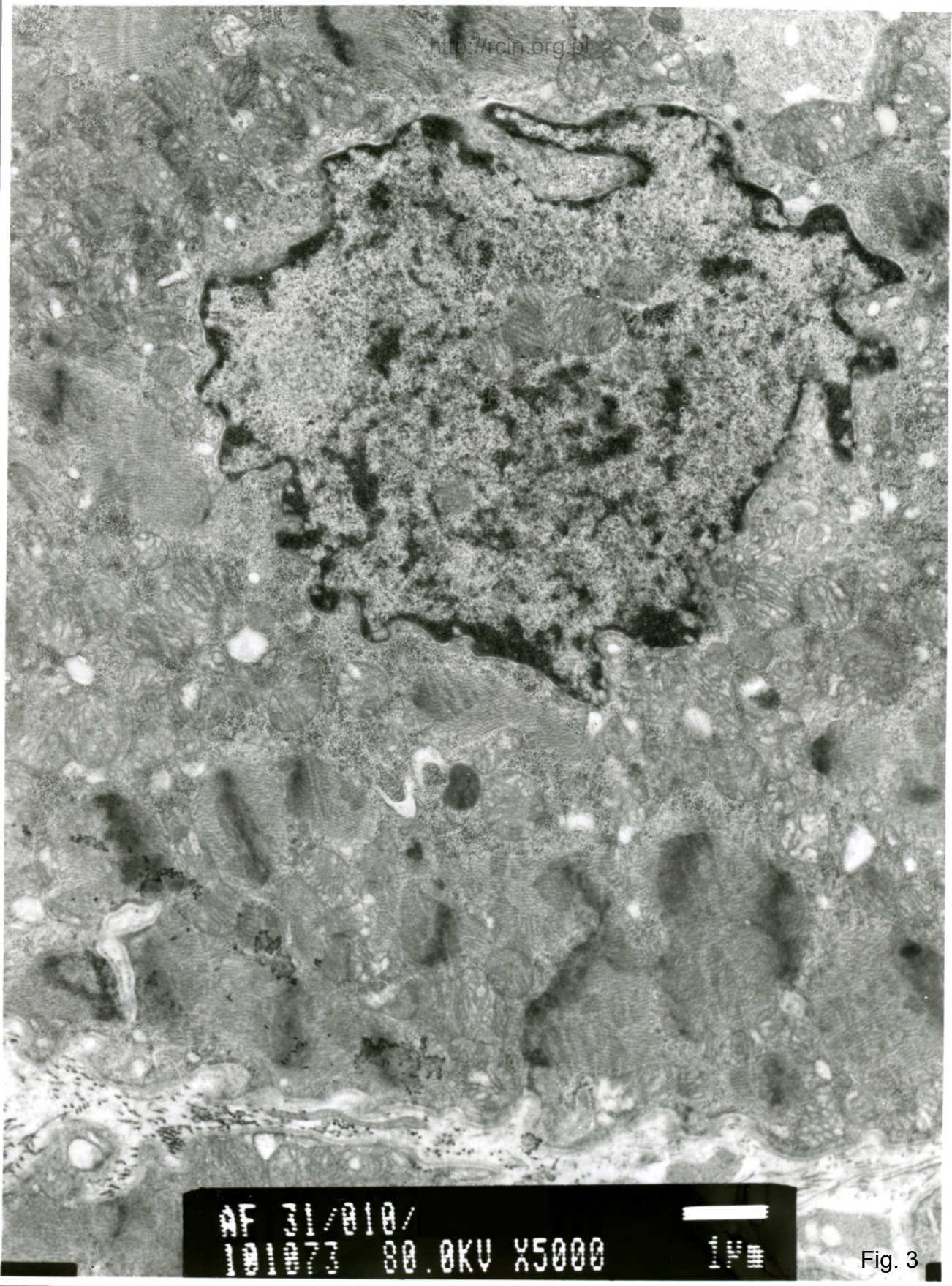


AF 31/010/  
101053 80.0KV X4000



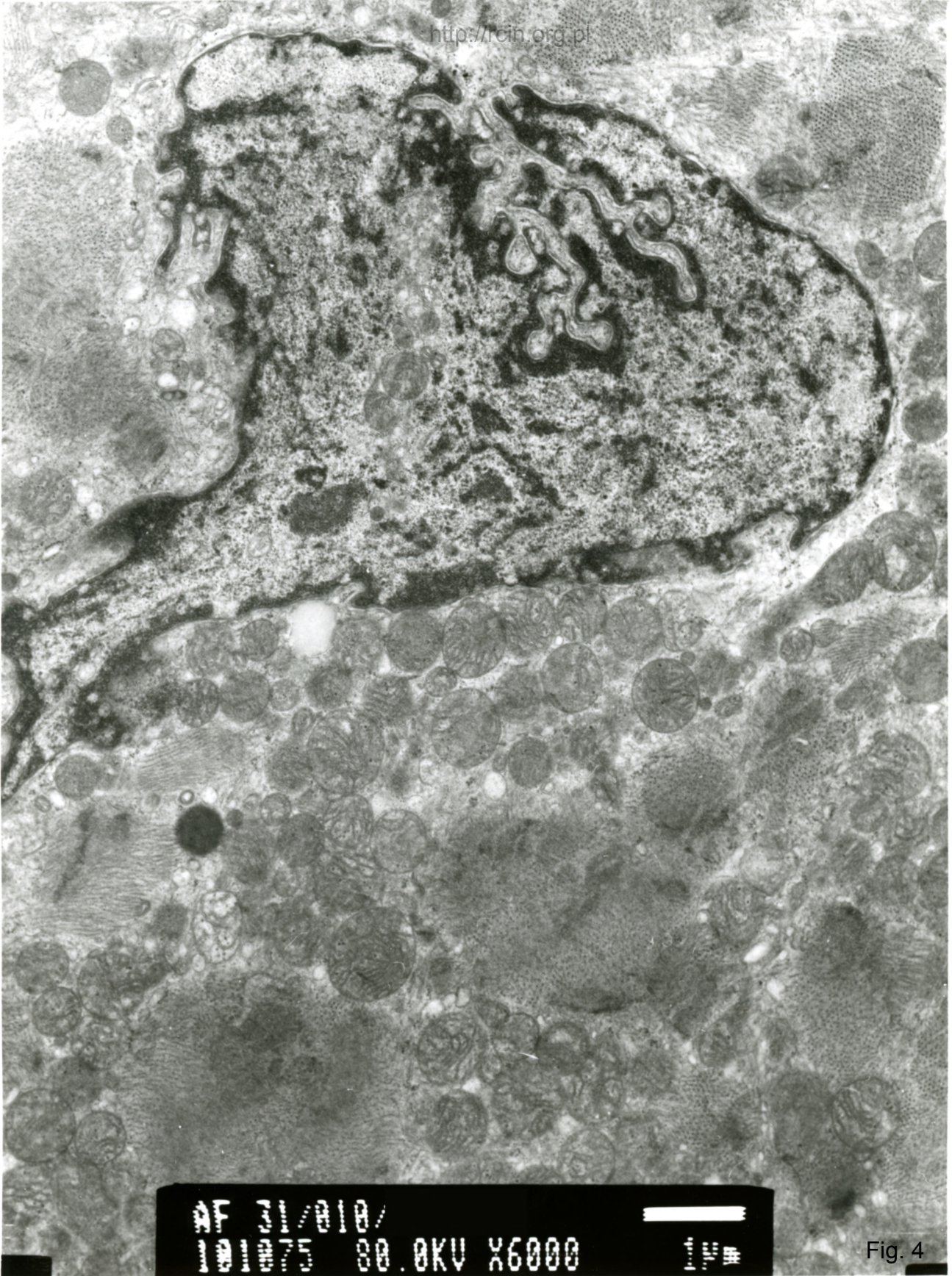
2µm

Fig. 2



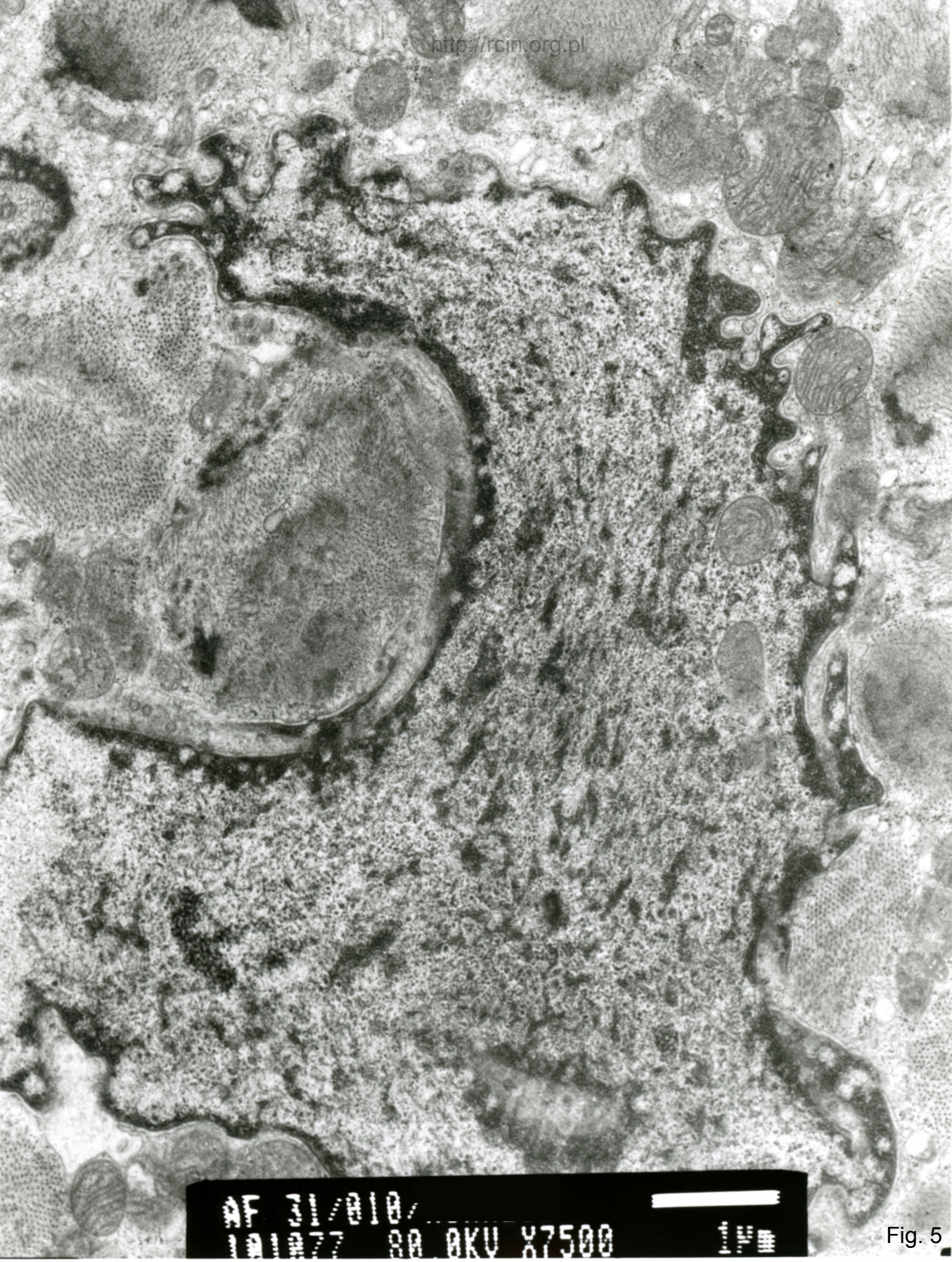
AF 31/010/  
101073 80.0KV X5000

Fig. 3



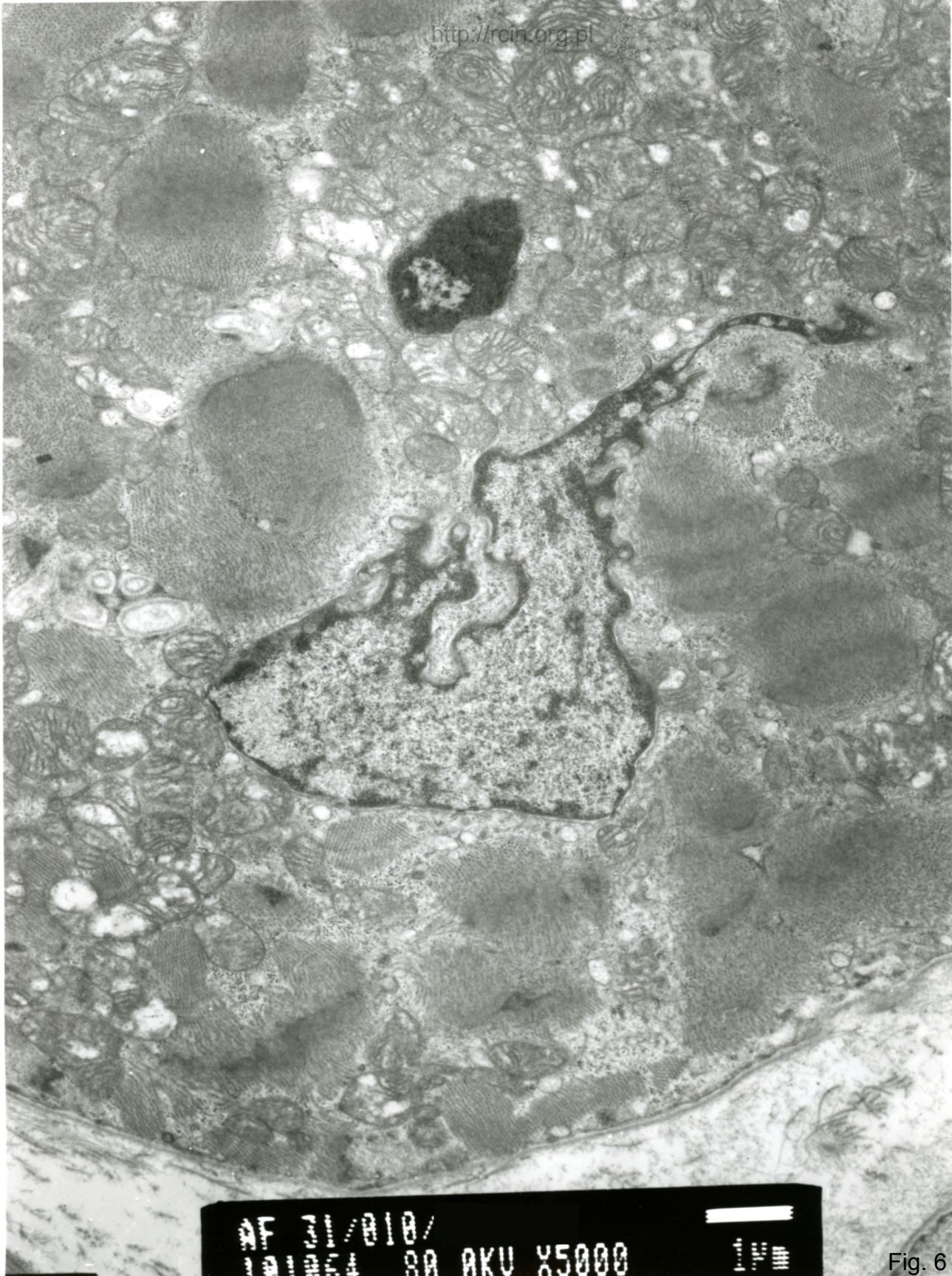
2011/01/10/010/ 00.0KV X6000

Fig. 4



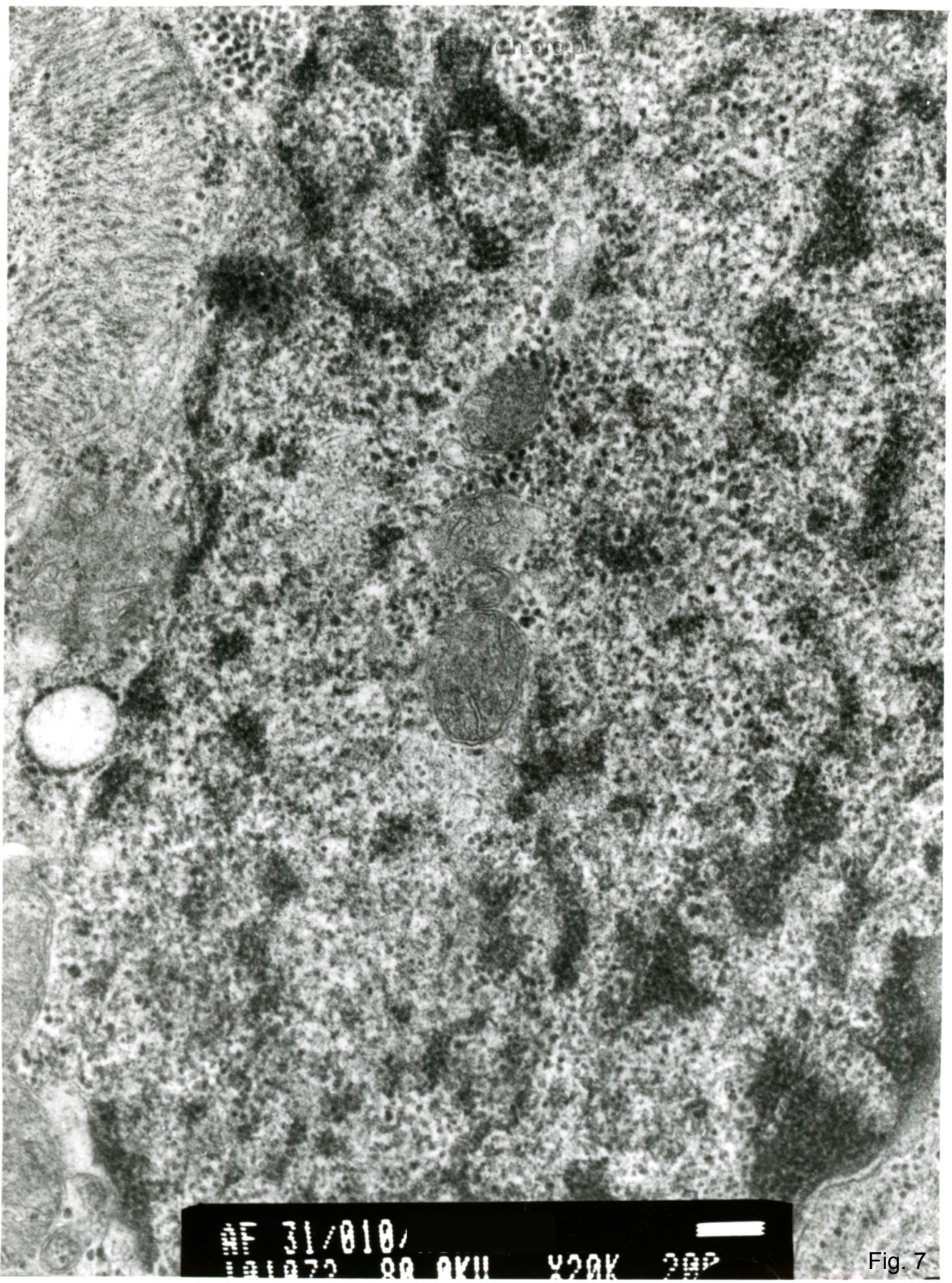
AF 31/010/  
101077 88 OKU X7500 1µm

Fig. 5



AF 21/010/  
100054 80.0KV X5000

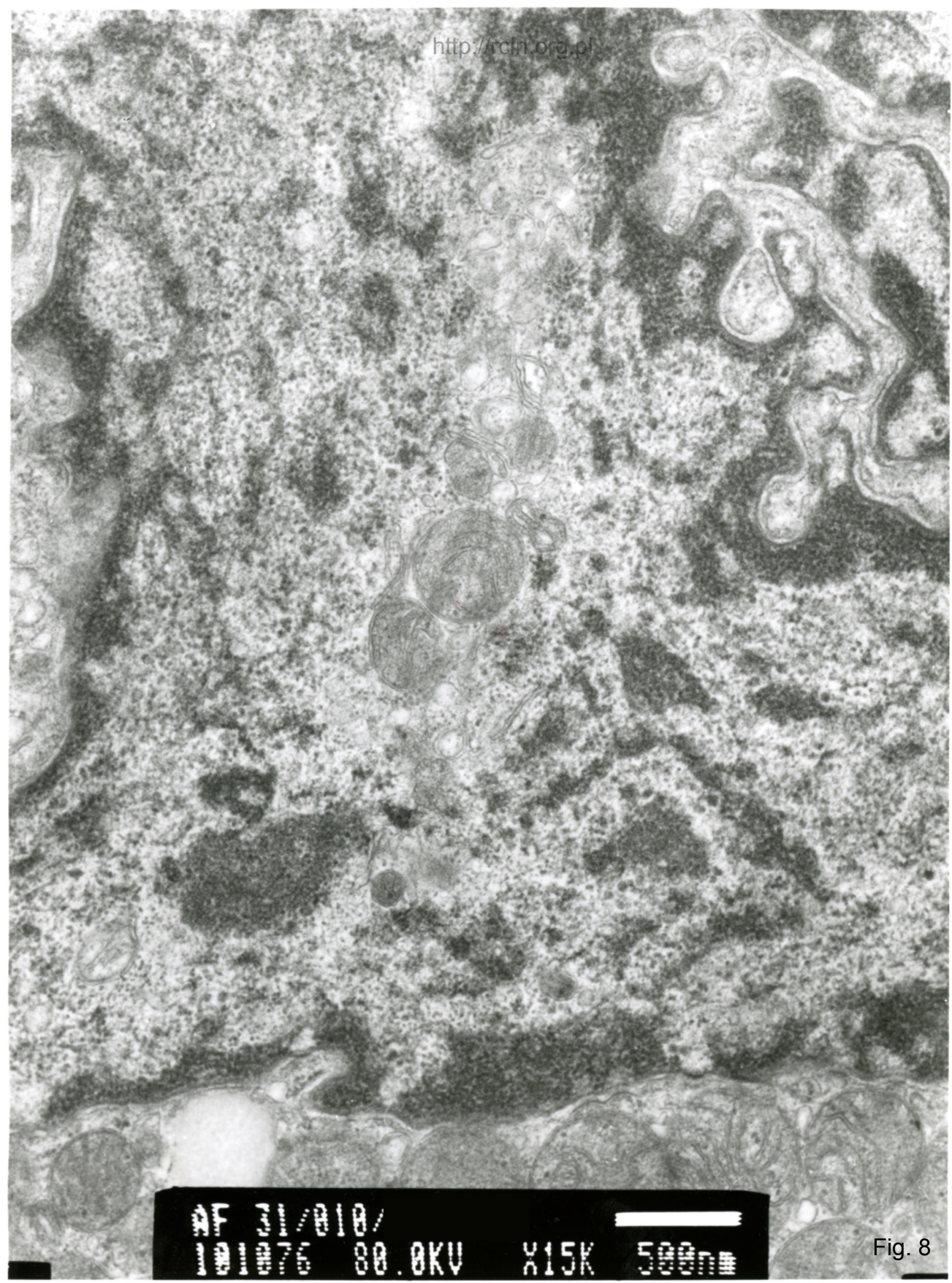
Fig. 6



https://doi.org/10.1002/anie.201801010

AF 31/010/  
191872 80 AKU 420K 20P

Fig. 7



AF 31/010/  
101076 80.0KV X15K 500nm

Fig. 8



31/10

1. 24

Niewydolność mięśnia sercowego

Analiza ultrastrukturalna wykazała dezorganizację sarkomerów (Fig. 1,2). Jądra kardiomiocytów charakteryzowały się nieregularnym kształtem i ogniskowym przerwaniem otoczki jądrowej (Fig. 3,4,5,6,7,8).

Heart failure

Ultrastructural analysis revealed disorganization of sarcomeres (Figs. 1,2). Cardiomyocyte nuclei were characterized by irregular shape and focally broken nuclear envelope (Figs. 3,4,5, 6,7,8)