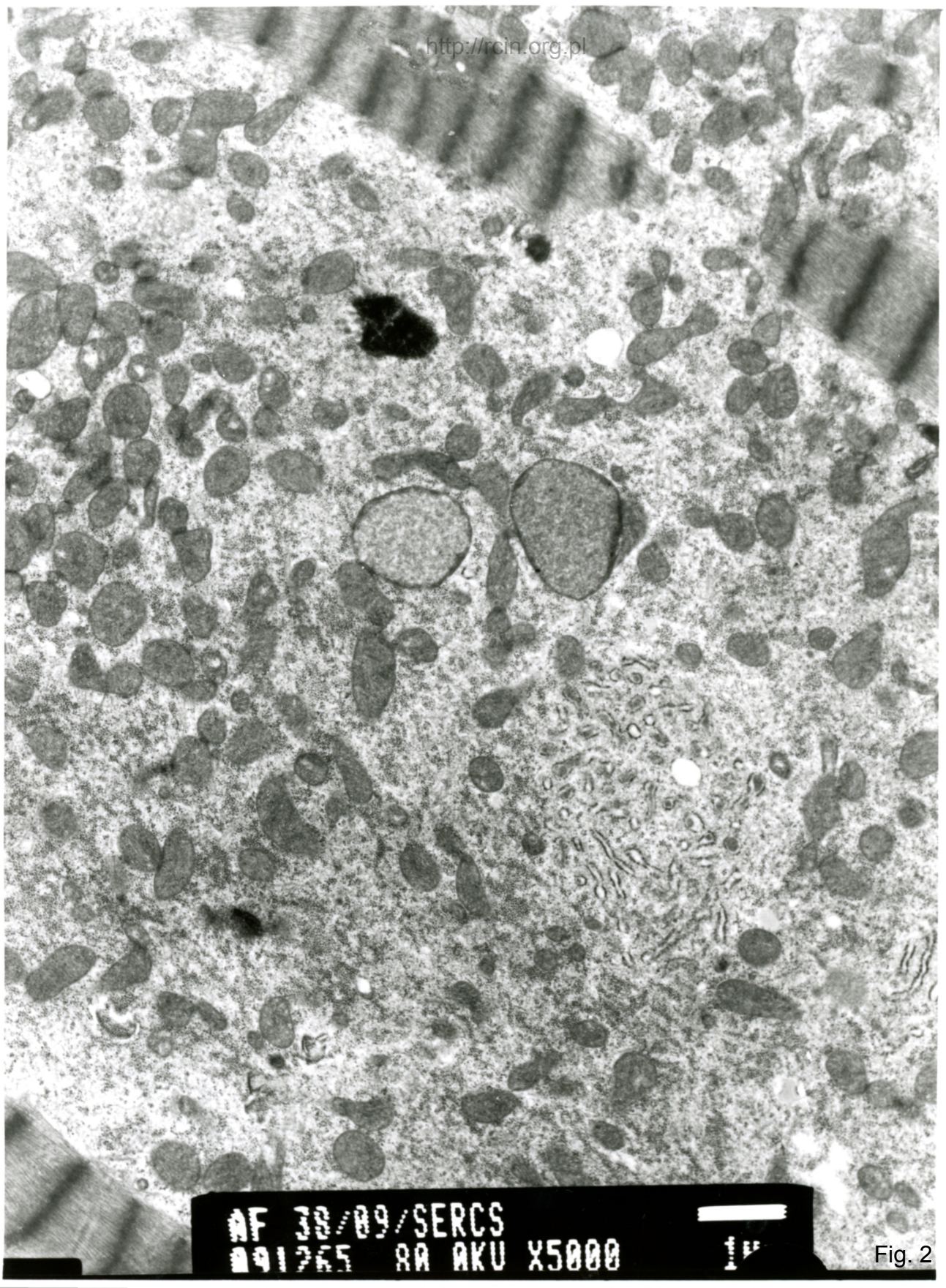
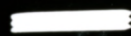


AF 38/89/SERCS
001267 00 AKII Y4000 2K

Fig. 1

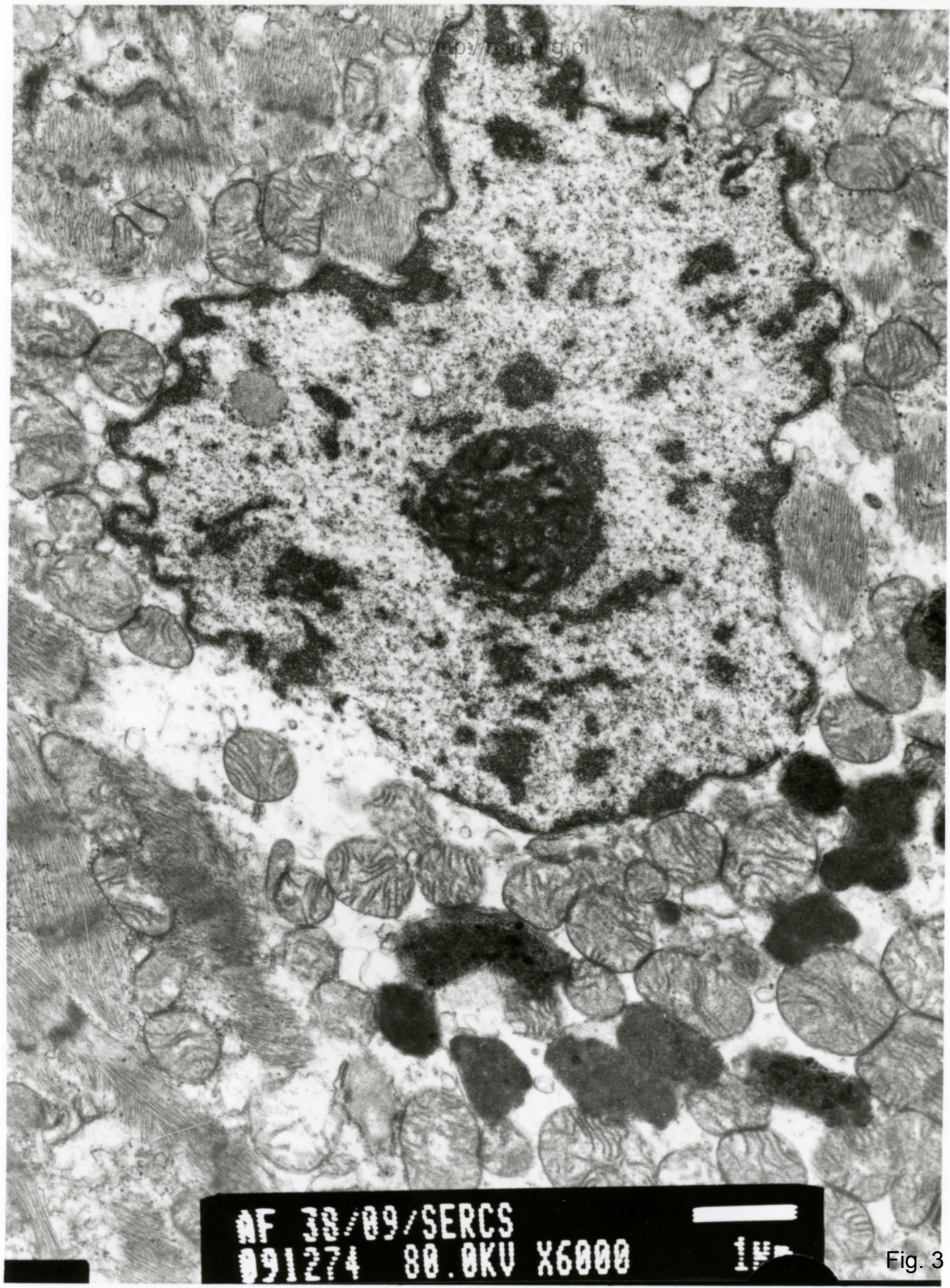


AF 38/09/SERCS
091265 RR AKU X5000



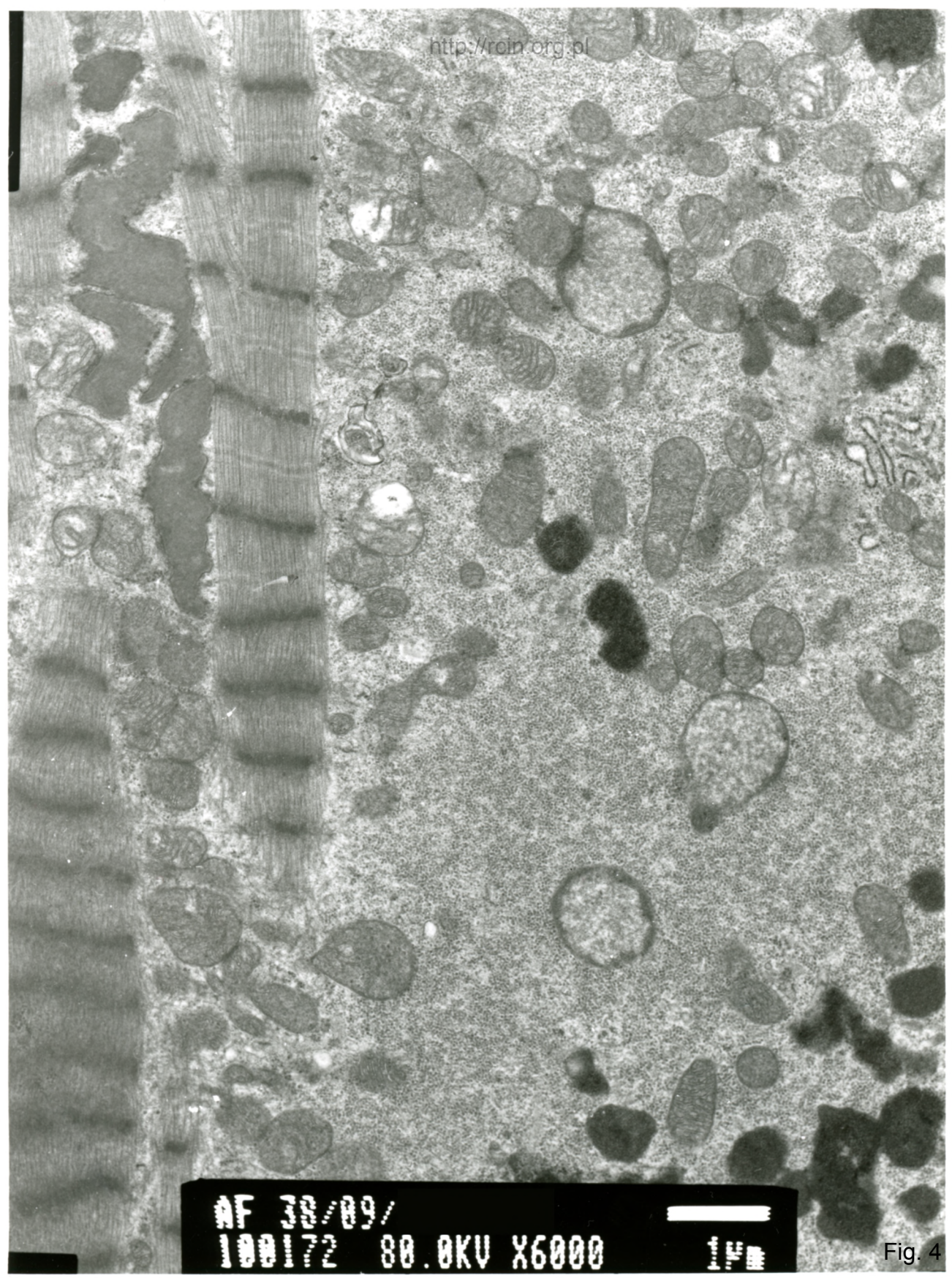
1 μ

Fig. 2



AF 30/09/SERCS
091274 80.0KV X6000

Fig. 3



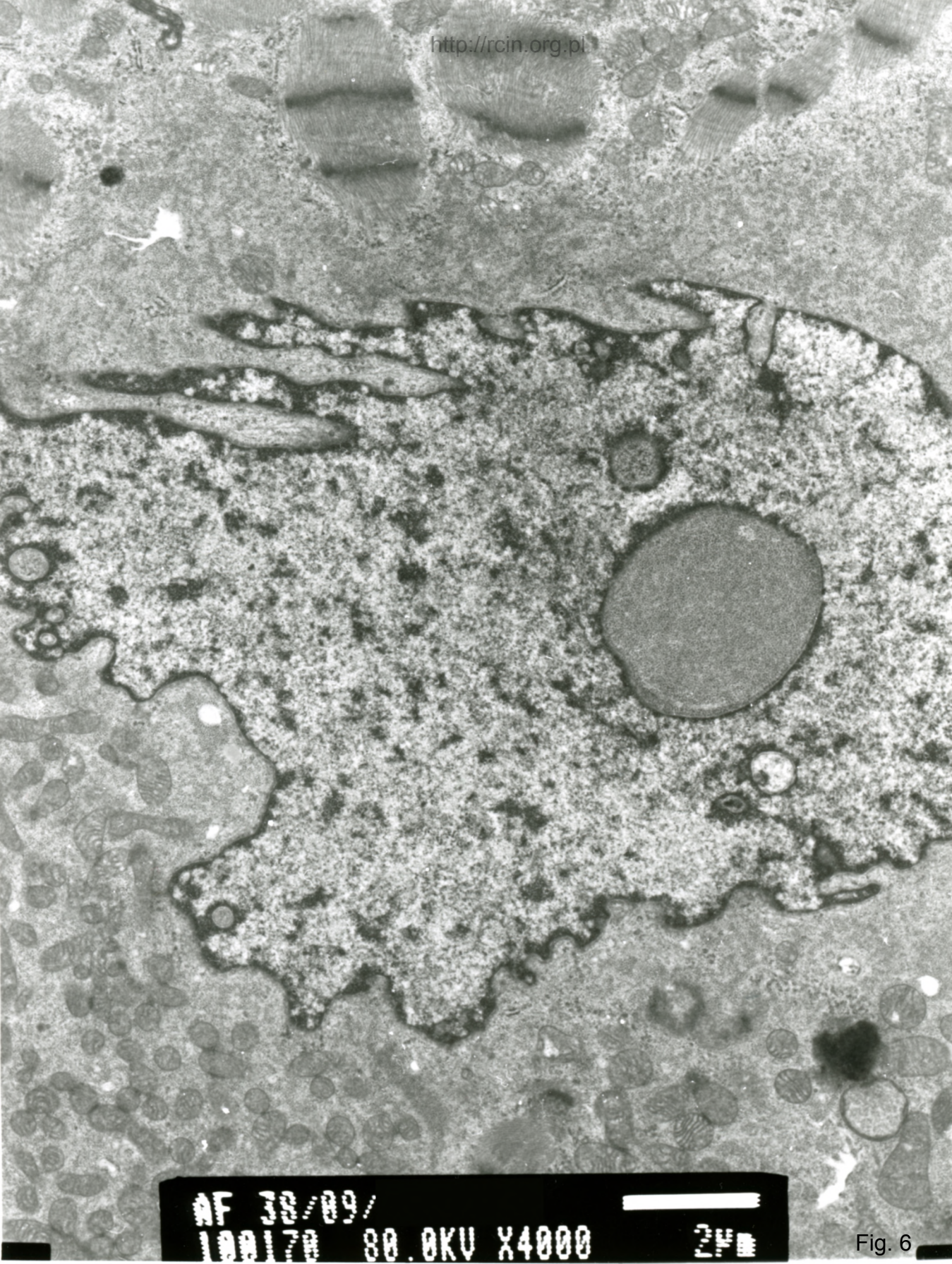
AF 38/09/
100172 80.0KV X6000 1µm

Fig. 4



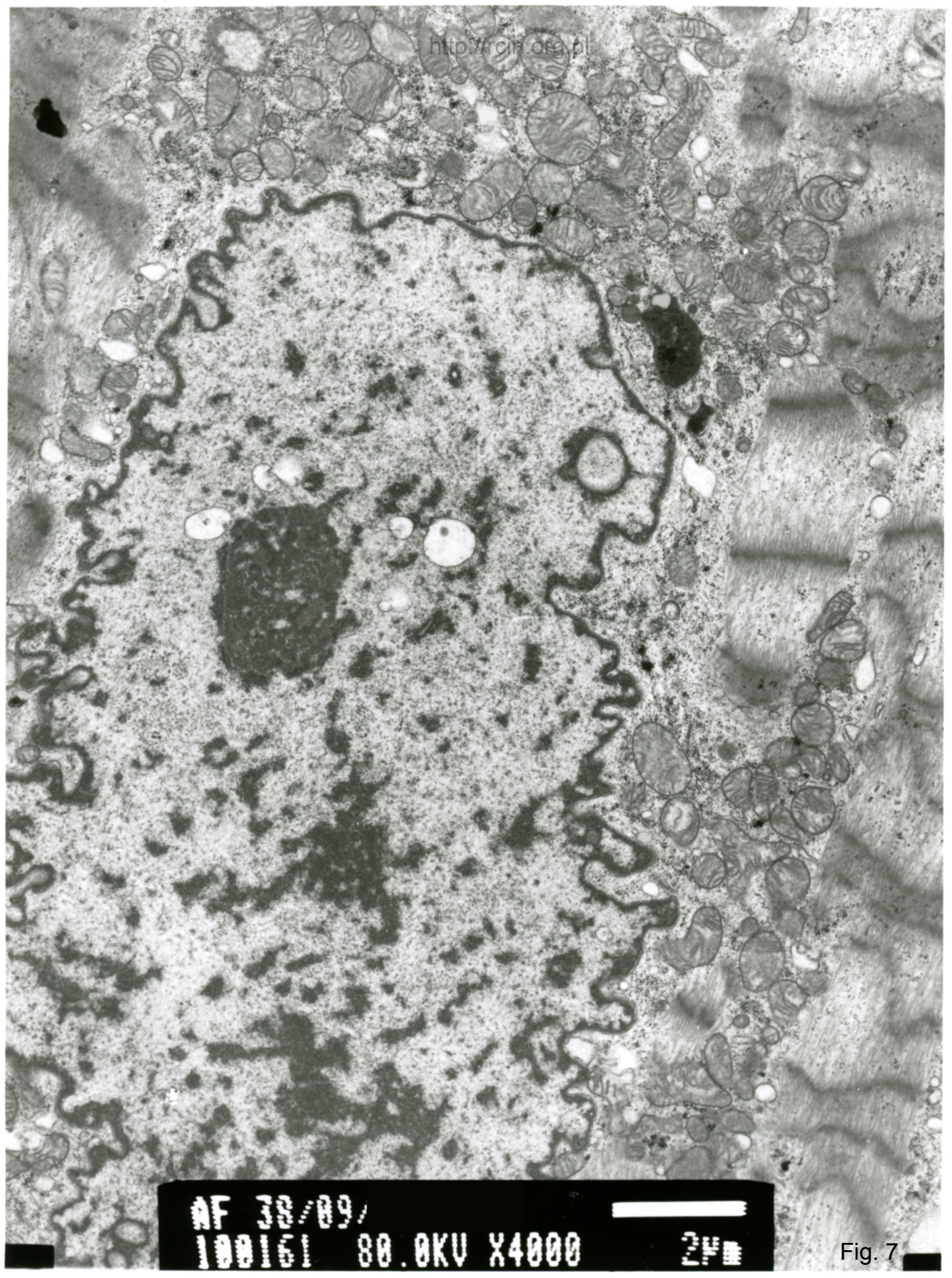
AF 38/89/SERCS
001270 00 BKII Y2000

Fig. 5



AF 38/89/
100170 80.0KV X4000 2µm

Fig. 6

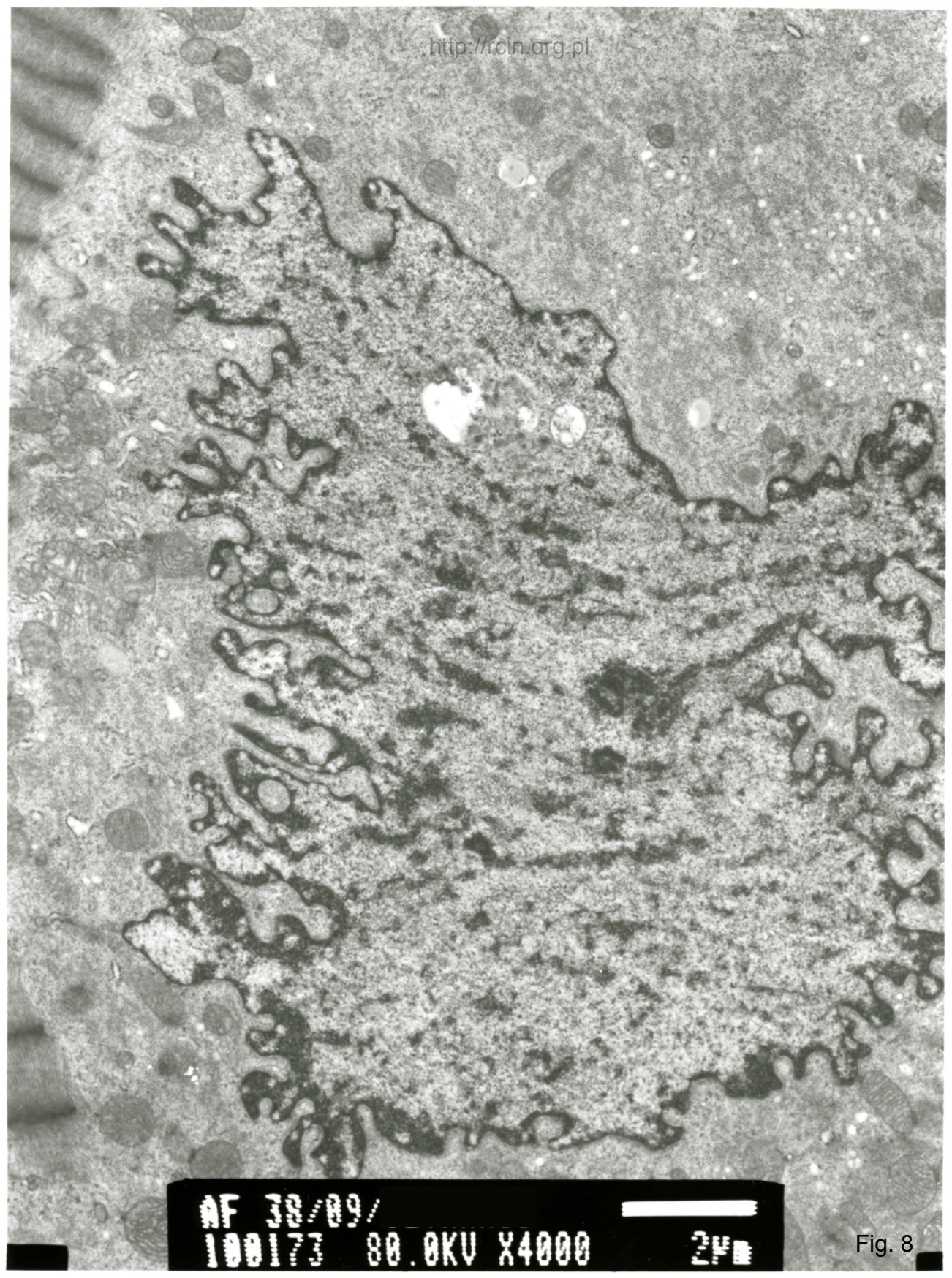


AF 38/89/

100161 80.0KV X4000

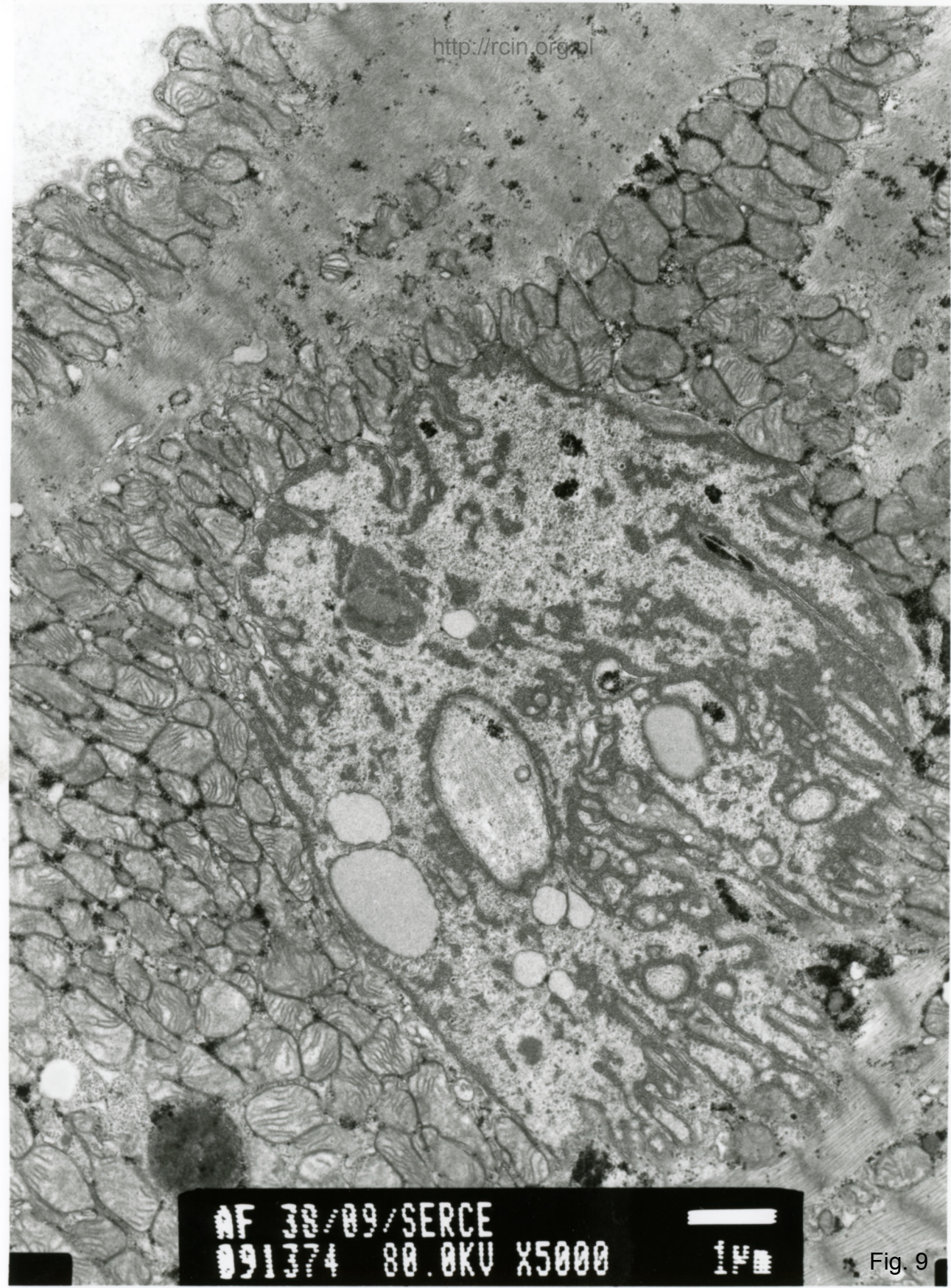
2µm

Fig. 7



AF 38/89/
100173 80.0KV X4000 2µm

Fig. 8



AF 38/09/SERCE
091374 80.0KV X5000

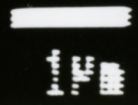
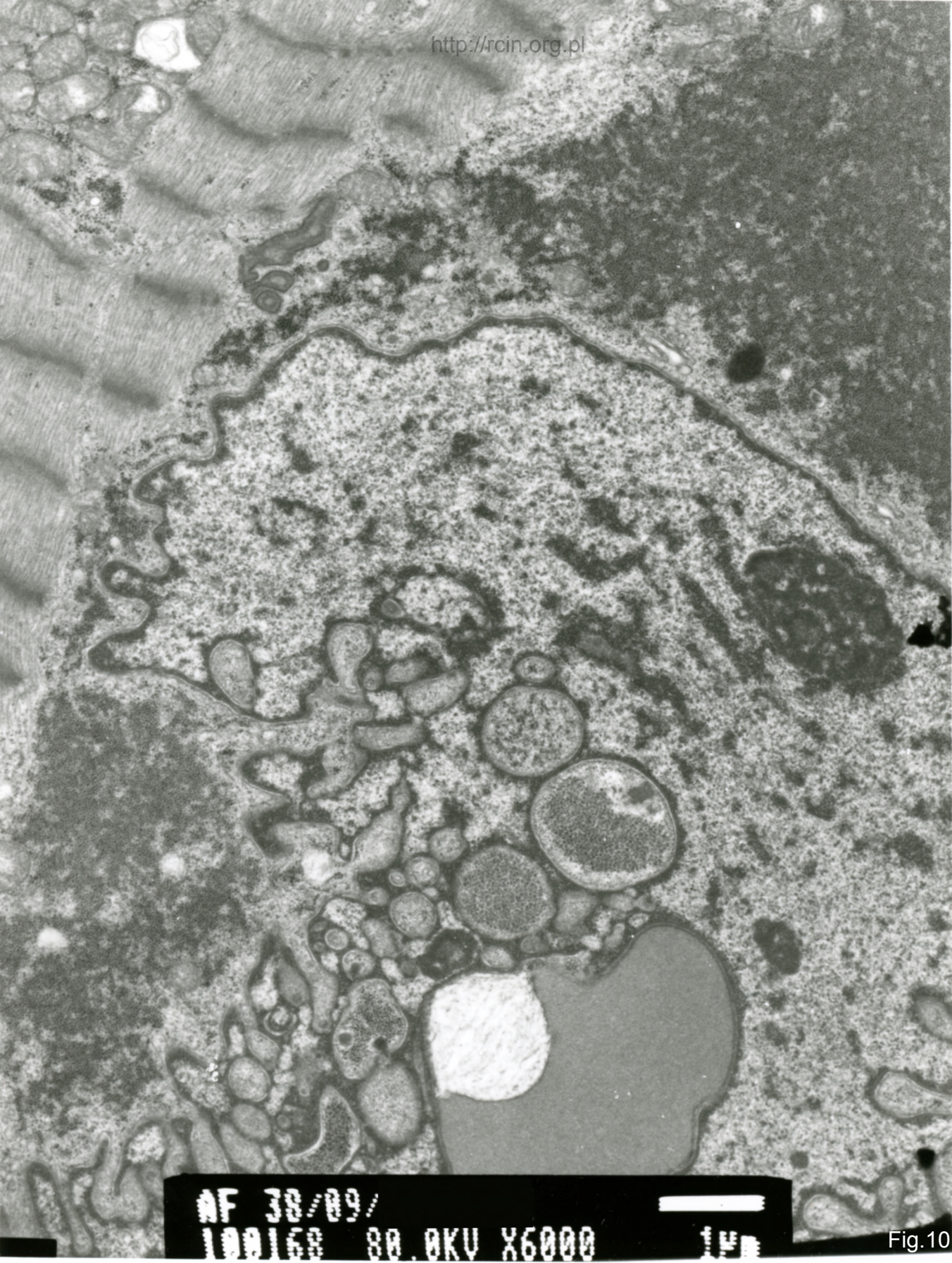
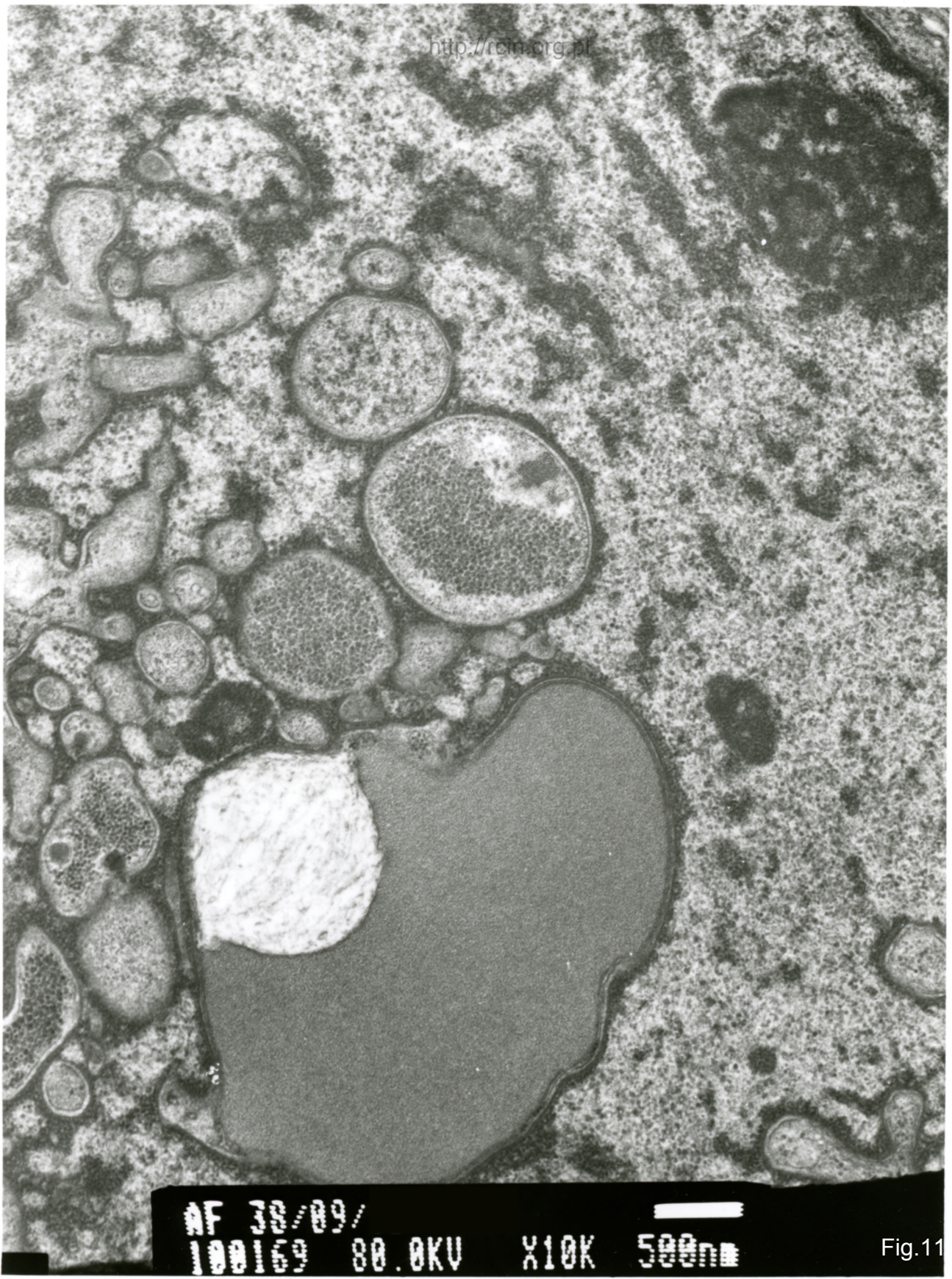


Fig. 9



AF 38/89/
100163 80.0KV X6000 1µm

Fig.10



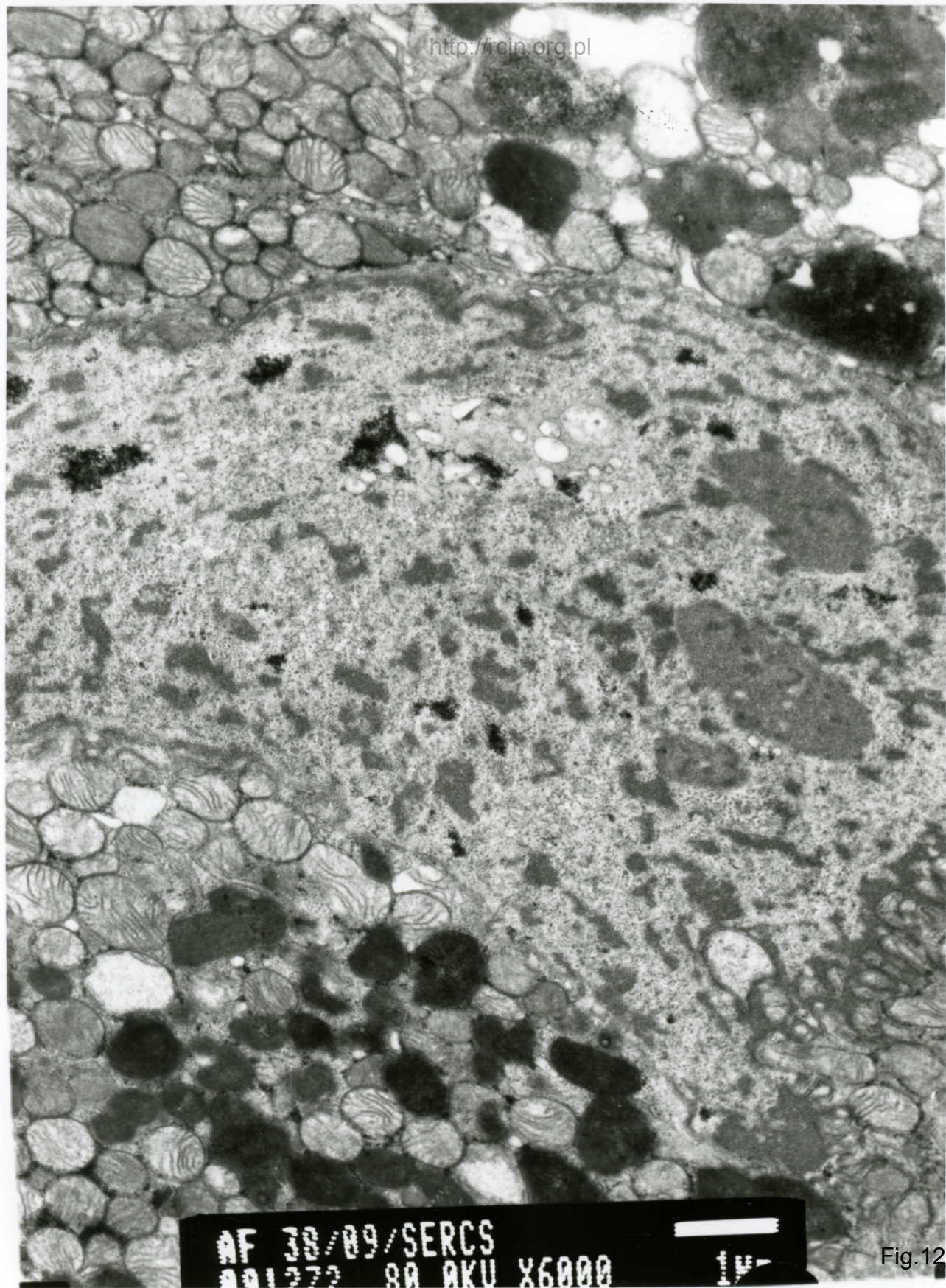
AF 38/09/

100169

80.0KV

X10K

500nm



NF 38/09/SERCS
001272 80 AKU X6000

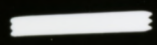
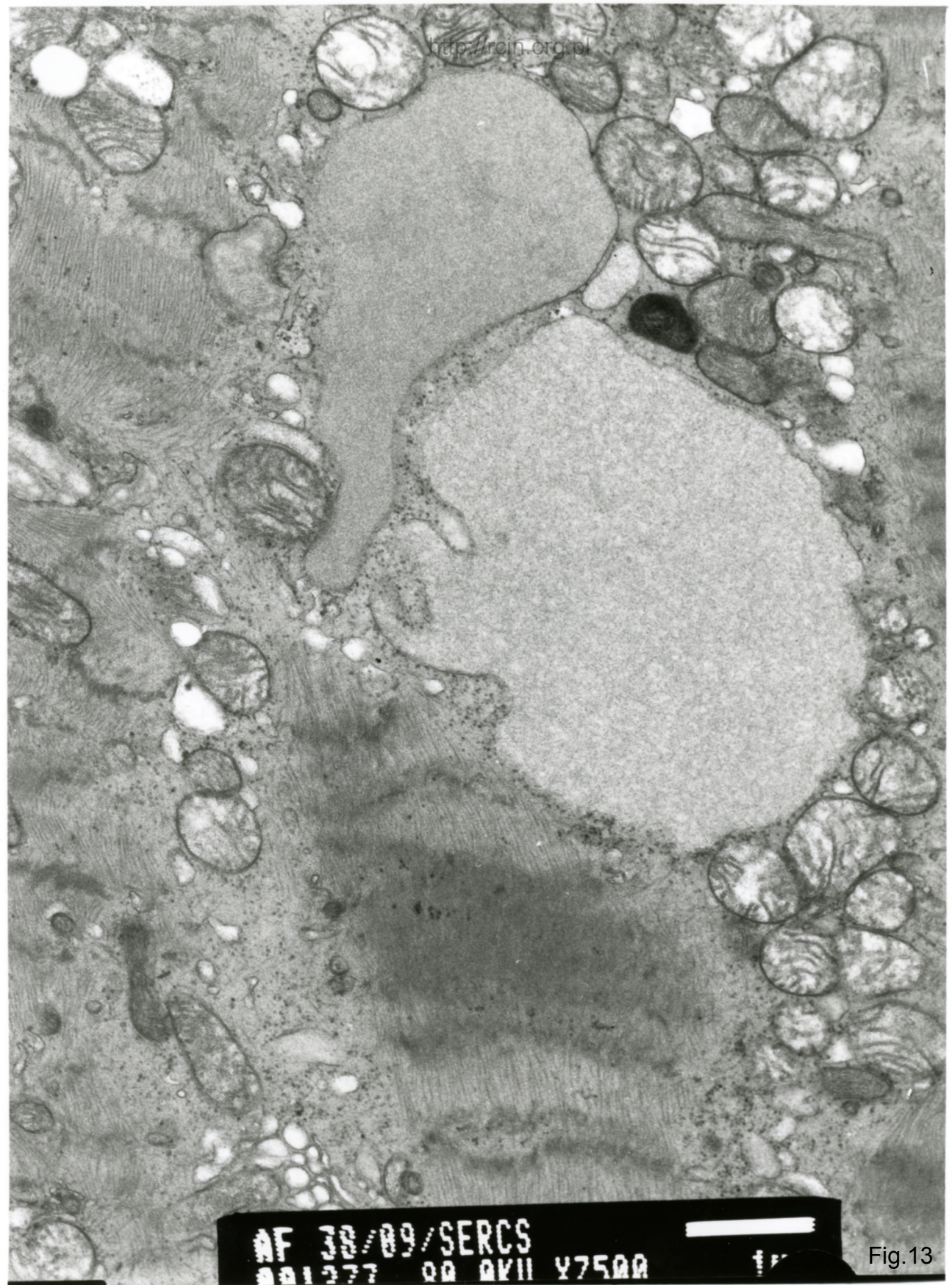
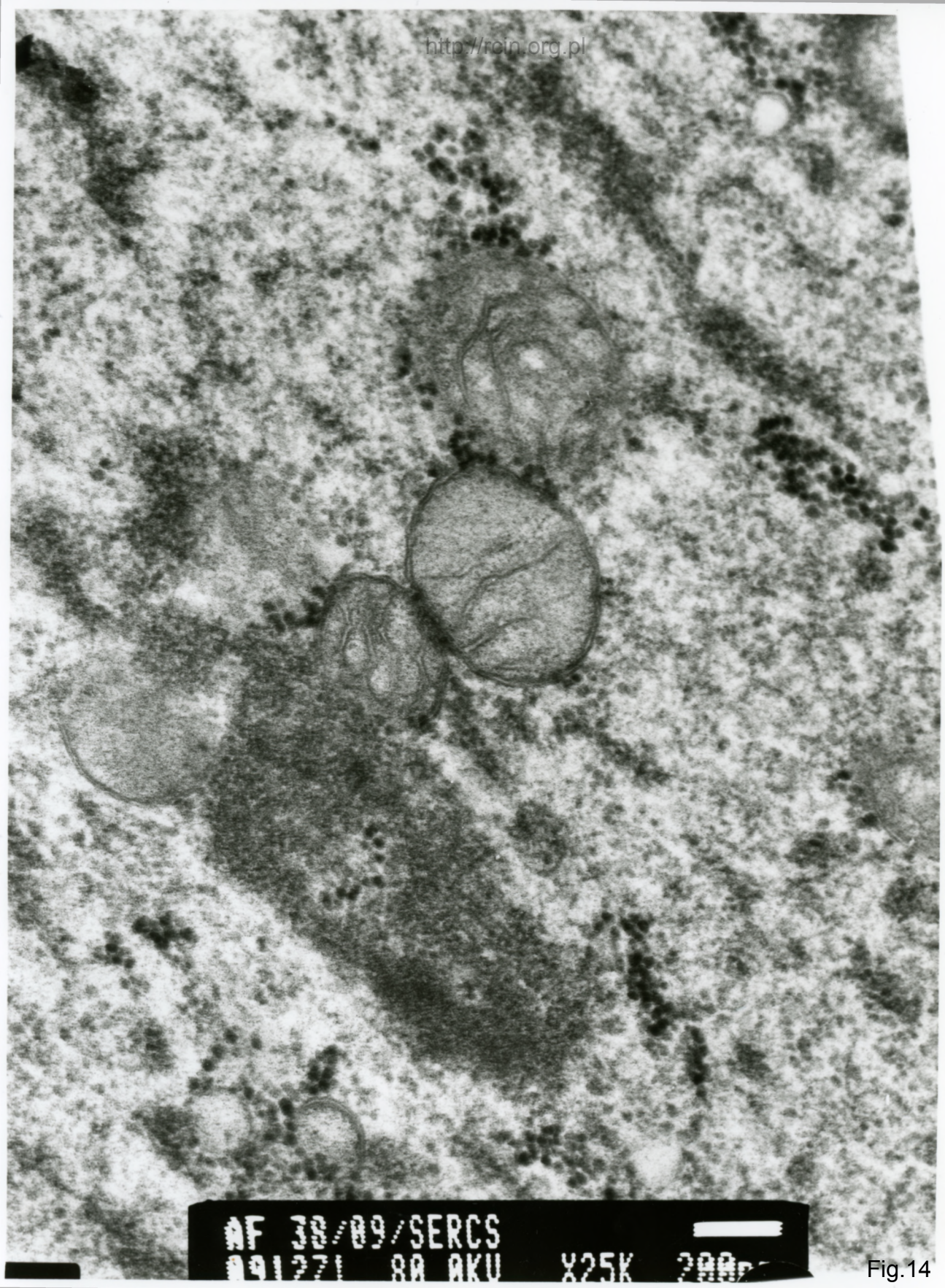


Fig.12



AF 38/89/SERCS
001277 00 0K11 Y7500

Fig.13



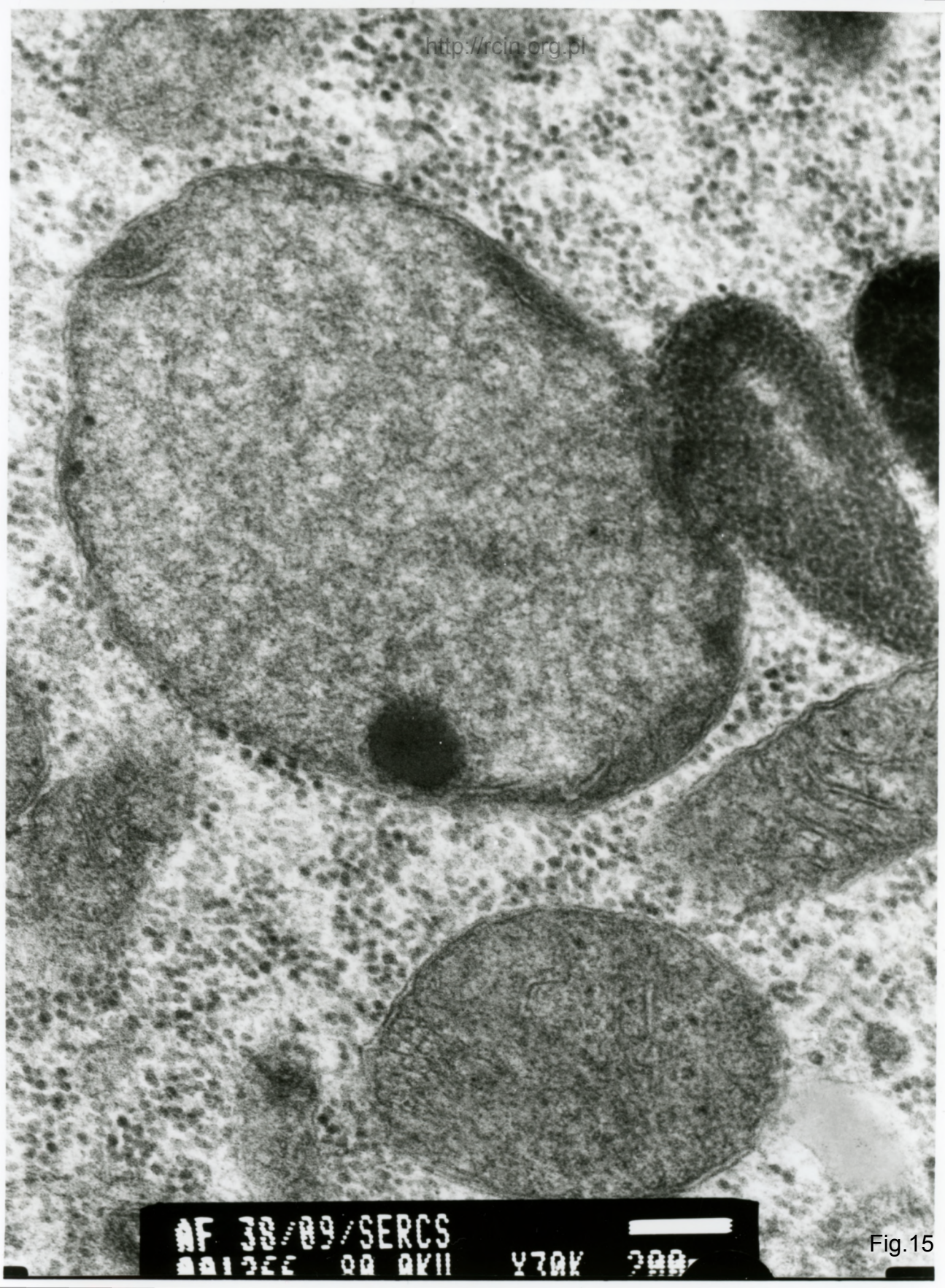
AF 30/09/SERCS

091271 80 AKU

X25K

2000

Fig.14



AF 38/09/SERCS
001222 00 MKII Y70K 200

Fig.15

38/09

1. 57

Kardiomiopatia rozstrzeniowa, niewydolność mięśnia sercowego

Analiza ultrastrukturalna wykazała ogniskowe zaburzenia w przebiegu miofibryli oraz ich dezorganizację, a miejscami całkowity ubytek (Fig. 1-4).

Obserwowano cechy charakterystyczne dla laminopatii. Jądra kardiomiocytów miały nieprawidłowy kształt, otoczka jądrowa była pofałdowana, a miejscami przerwana. Wiele jąder zawierało w swym wnętrzu organelle komórkowe lub obłonięte struktury (Fig. 5-11).

Niektóre mitochondria charakteryzowały się jasną macierzą mitochondrialną i ubytkiem grzebieni, bądź ich nieprawidłowym ułożeniem (Fig. 12-15).

Dilated cardiomyopathy, heart failure

Ultrastructural analysis showed disturbances in the course of myofibrils and their disorganization, focally a complete loss of myofibrils (Figs. 1-4)

Characteristic features of laminopathy have been observed. The cardiomyocyte nuclei were characterized by abnormal shape and corrugated nuclear envelope. Some of them showed discontinuity of the nuclear membrane and contain cellular organelles or membrane-surrunded structures inside (Figs. 5-11).

Some of mitochondria were ultrastructurally changed. They were characterized by a bright mitochondrial matrix and loss of mitochondrial cristae or their altered arrangement (Fig. 12-15).