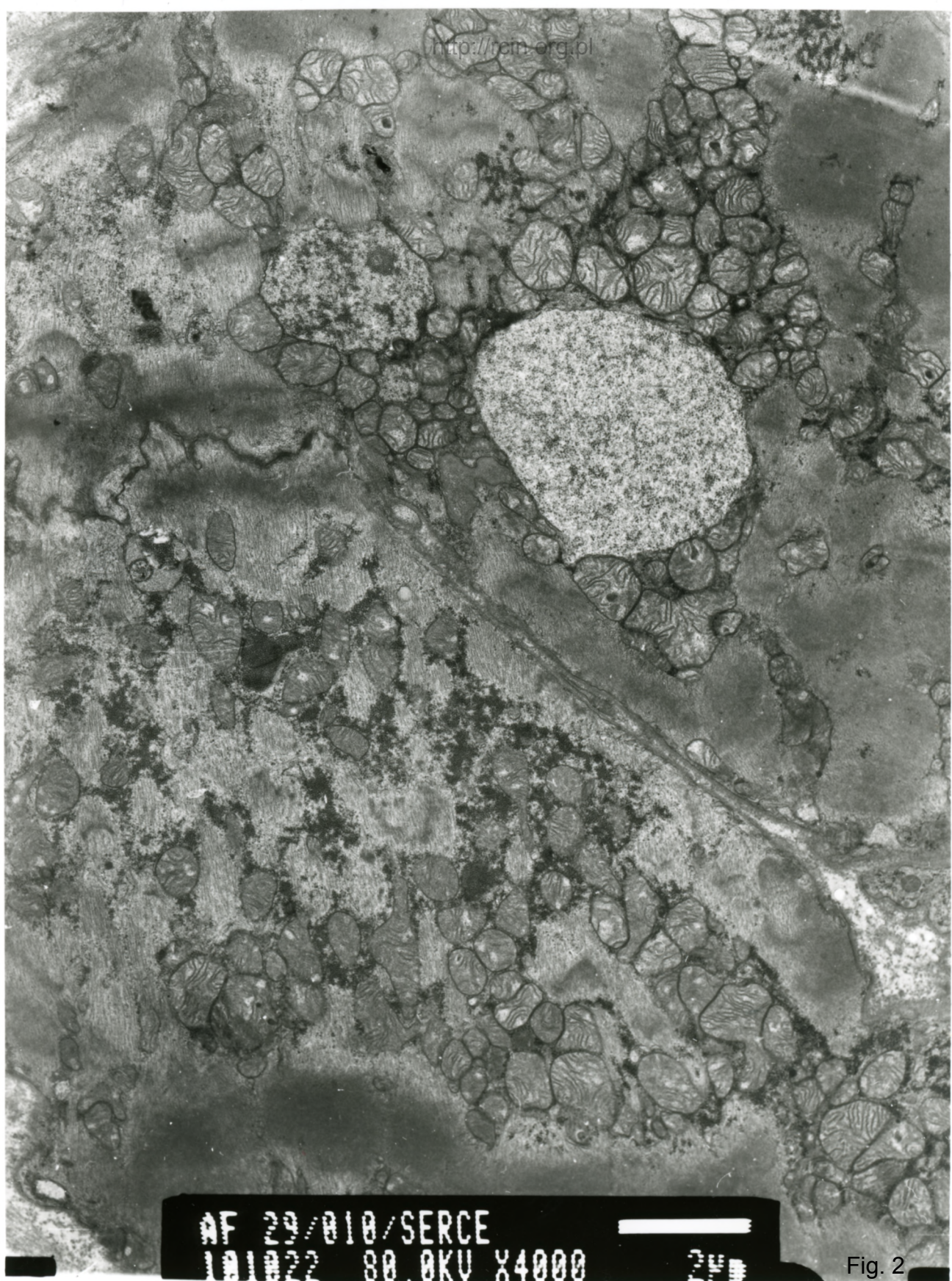


AF 29/010/SERCE
101021 80.0KV X4000



2µm

Fig. 1



AF 29/010/SERCE
101022 80.0KV X4000 24

Fig. 2

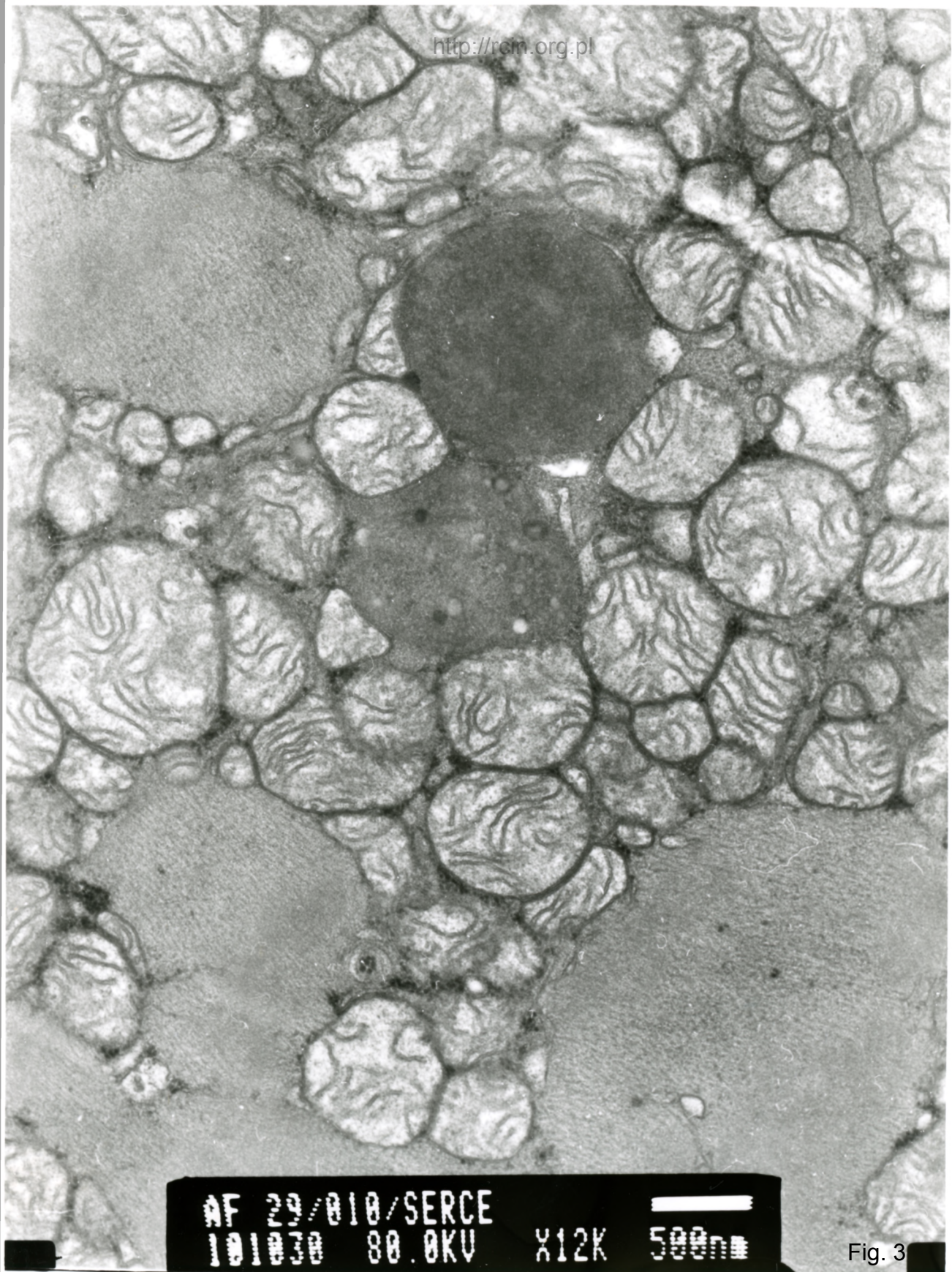
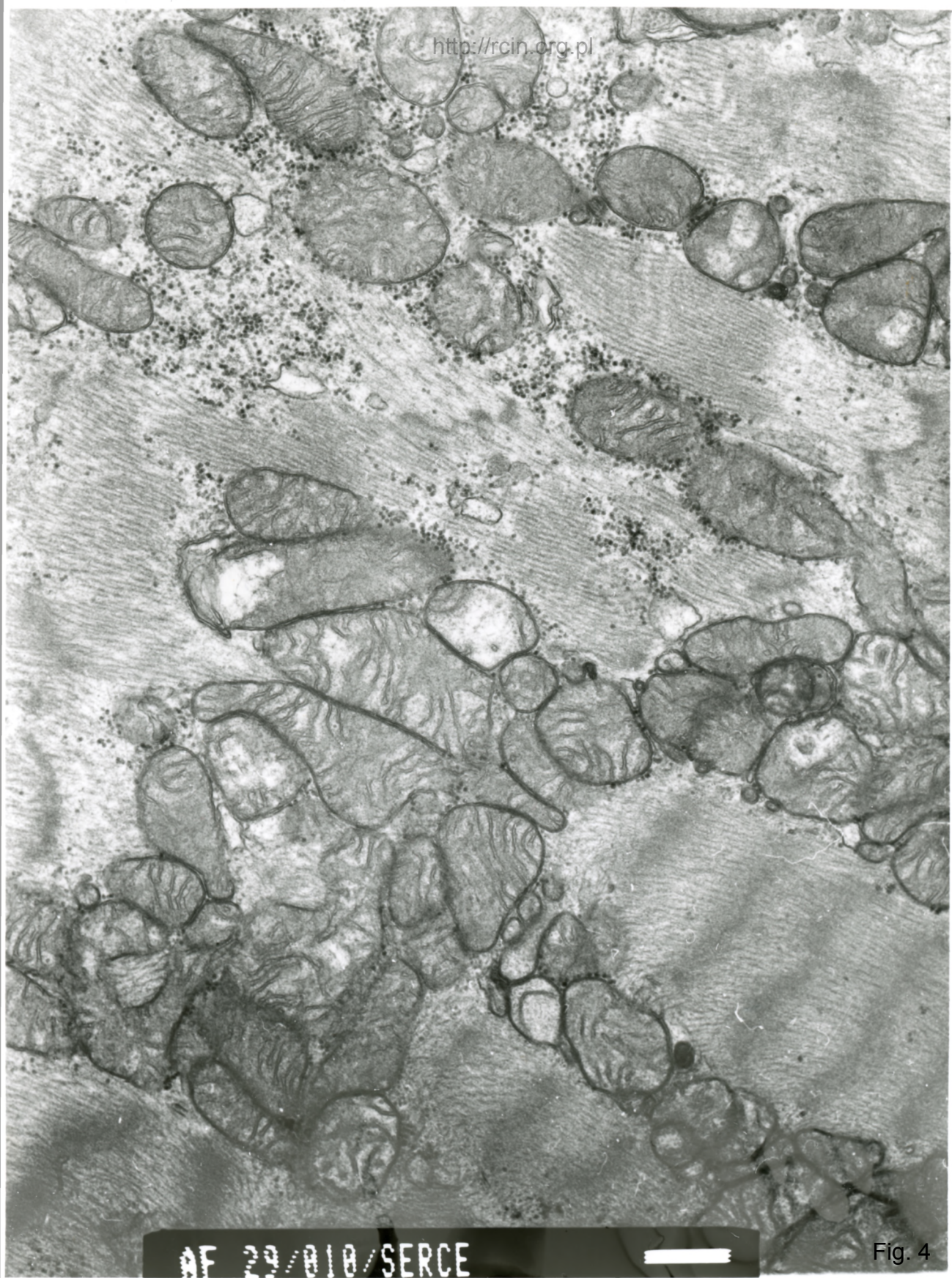
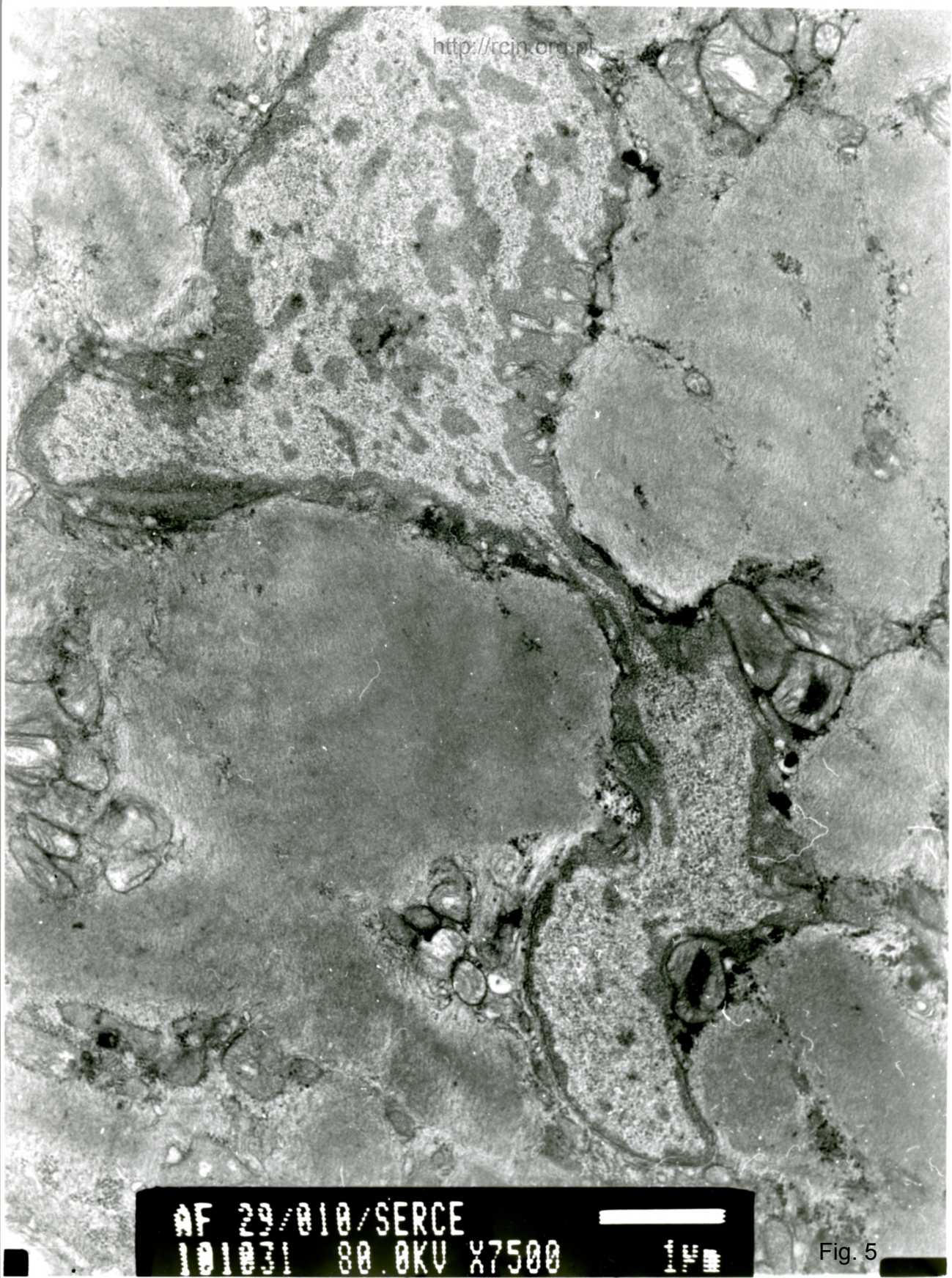


Fig. 3



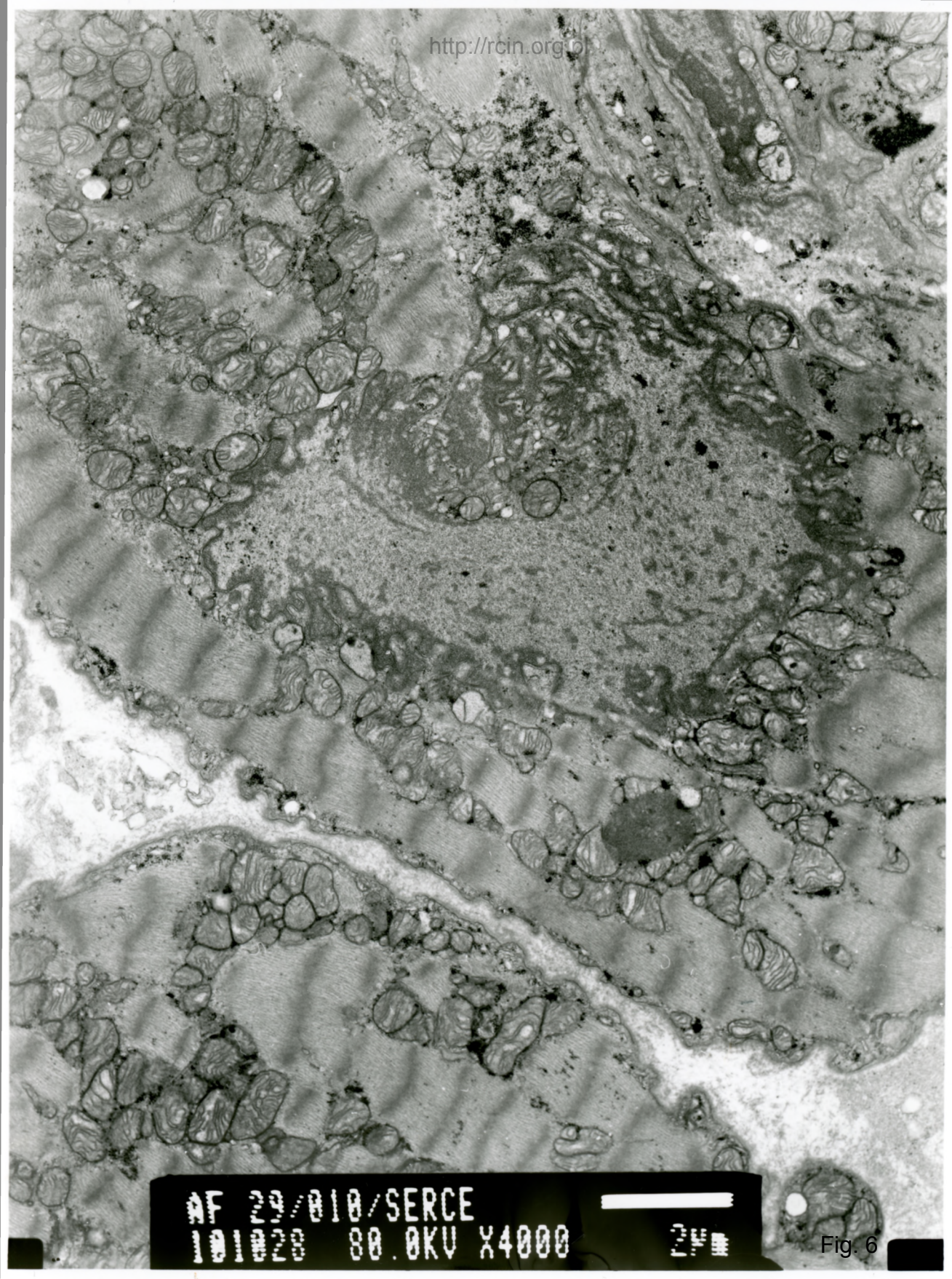
AF 29/010/SERCE

Fig. 4

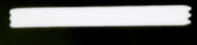


AF 29/010/SERCE
101031 80.0KV X7500

Fig. 5

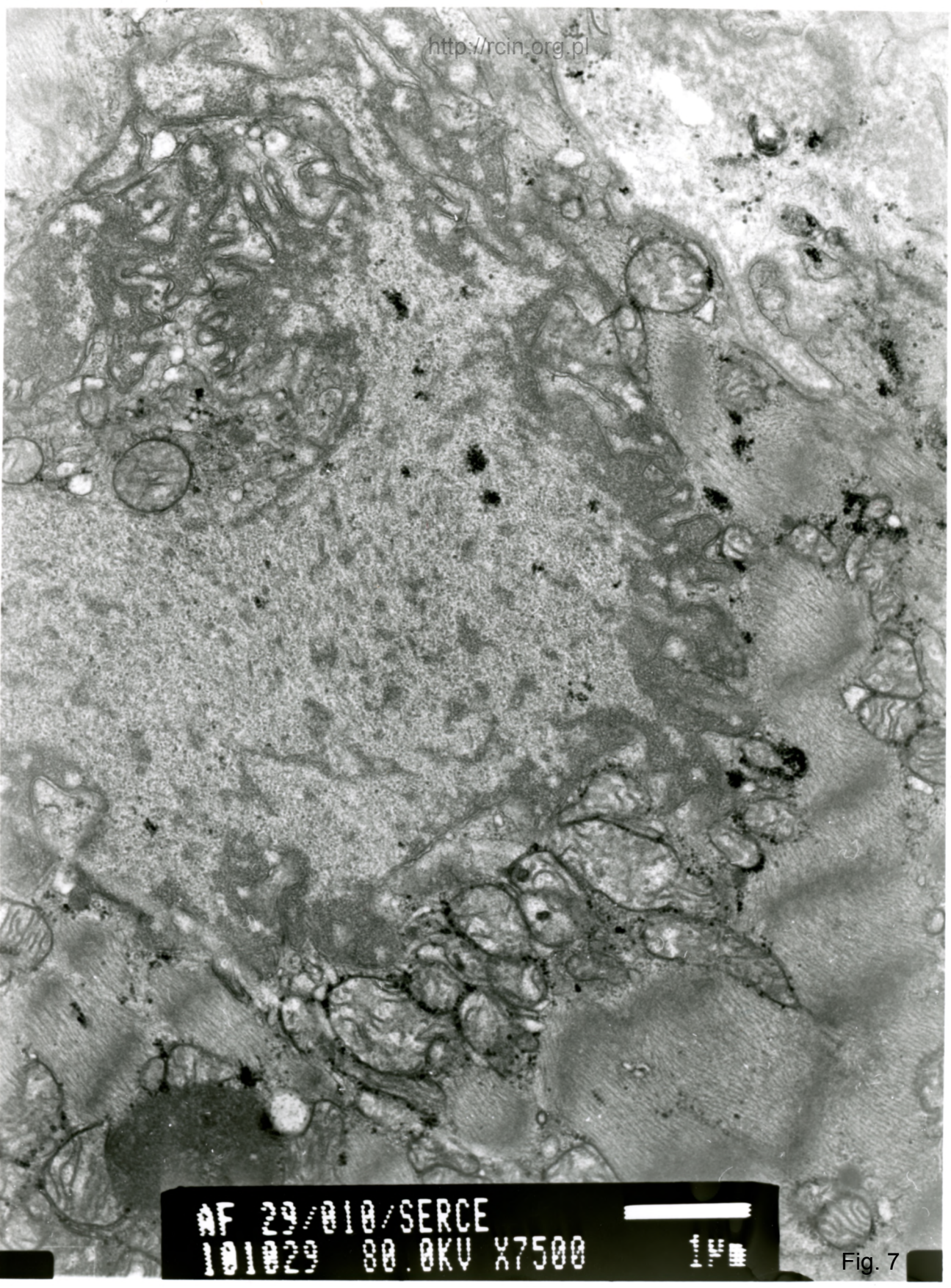


AF 29/010/SERCE
101028 80.0KV X4000

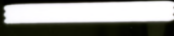


2µm

Fig. 6

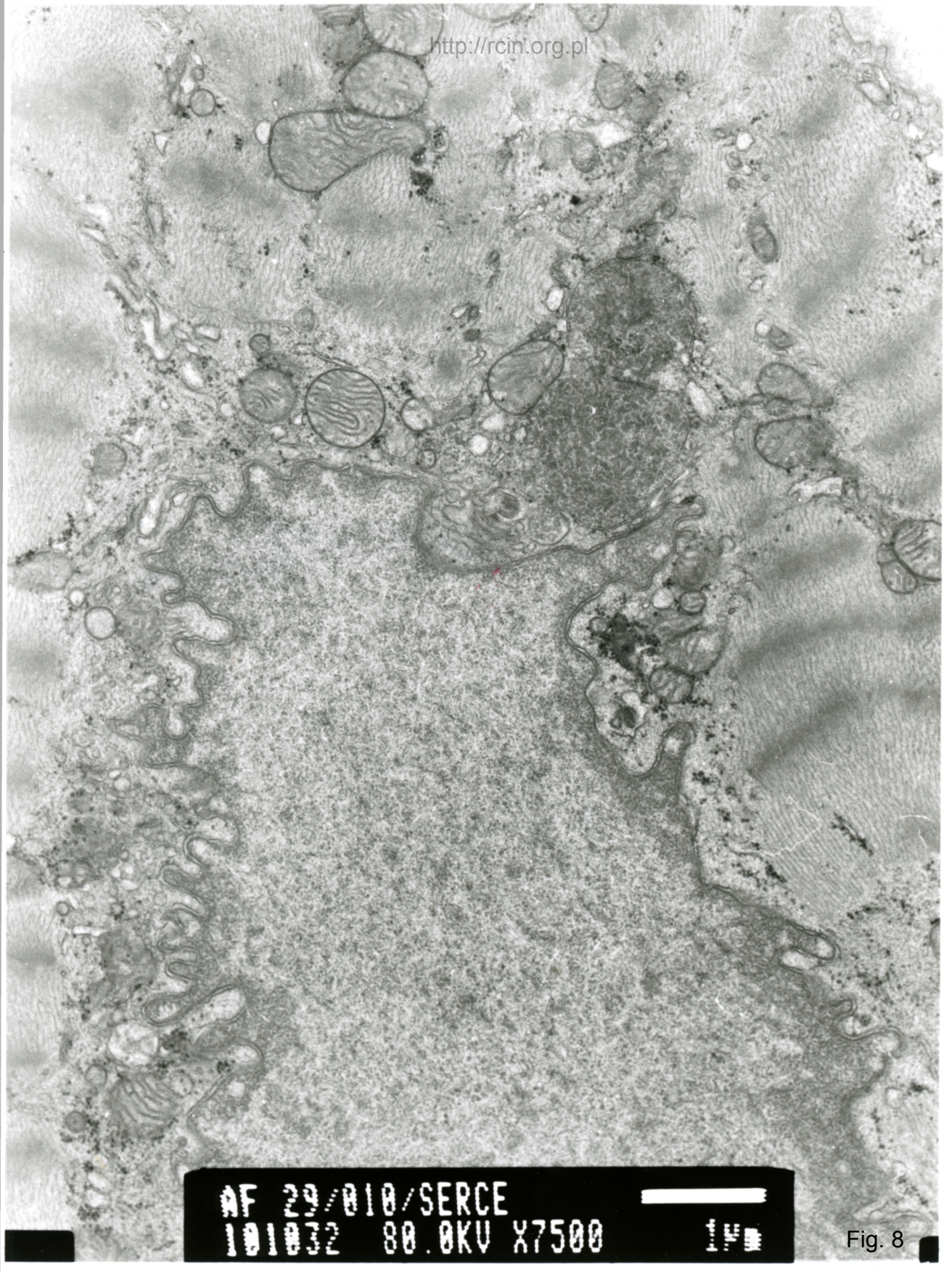


AF 29/010/SERCE
101029 80.0KV X7500

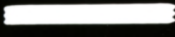


1µm

Fig. 7



AF 29/010/SERCE
101032 80.0KV X7500



1µm

Fig. 8

29/10

1. 20

Zapalenie mięśnia sercowego

Analiza ultrastrukturalna wykazała dezorganizację sarkomerów (Fig. 1, 2). W sarkoplazmie obecne były liczne zmienione mitochondria (Fig.3,4). Jądra kardiomiocytów charakteryzowały się nieregularnym kształtem i ogniskowym przerwaniem otoczki jądrowej (Fig. 5,6,7,8).

Myocarditis

Ultrastructural analysis revealed sarcomeres disorganization (Figs. 1, 2). Numerous altered mitochondria were present in the sarcoplasm (Figs. 3,4). Cardiomyocyte nuclei were characterized by irregular shape and focal breaks of the nuclear envelope (Figs. 5,6,7,8).