

AF 4/912/SERCE  
129158 80.0KV X3000



Fig. 1





AF 4/912/SERCE  
129156 80.0KV X5000

Fig. 2



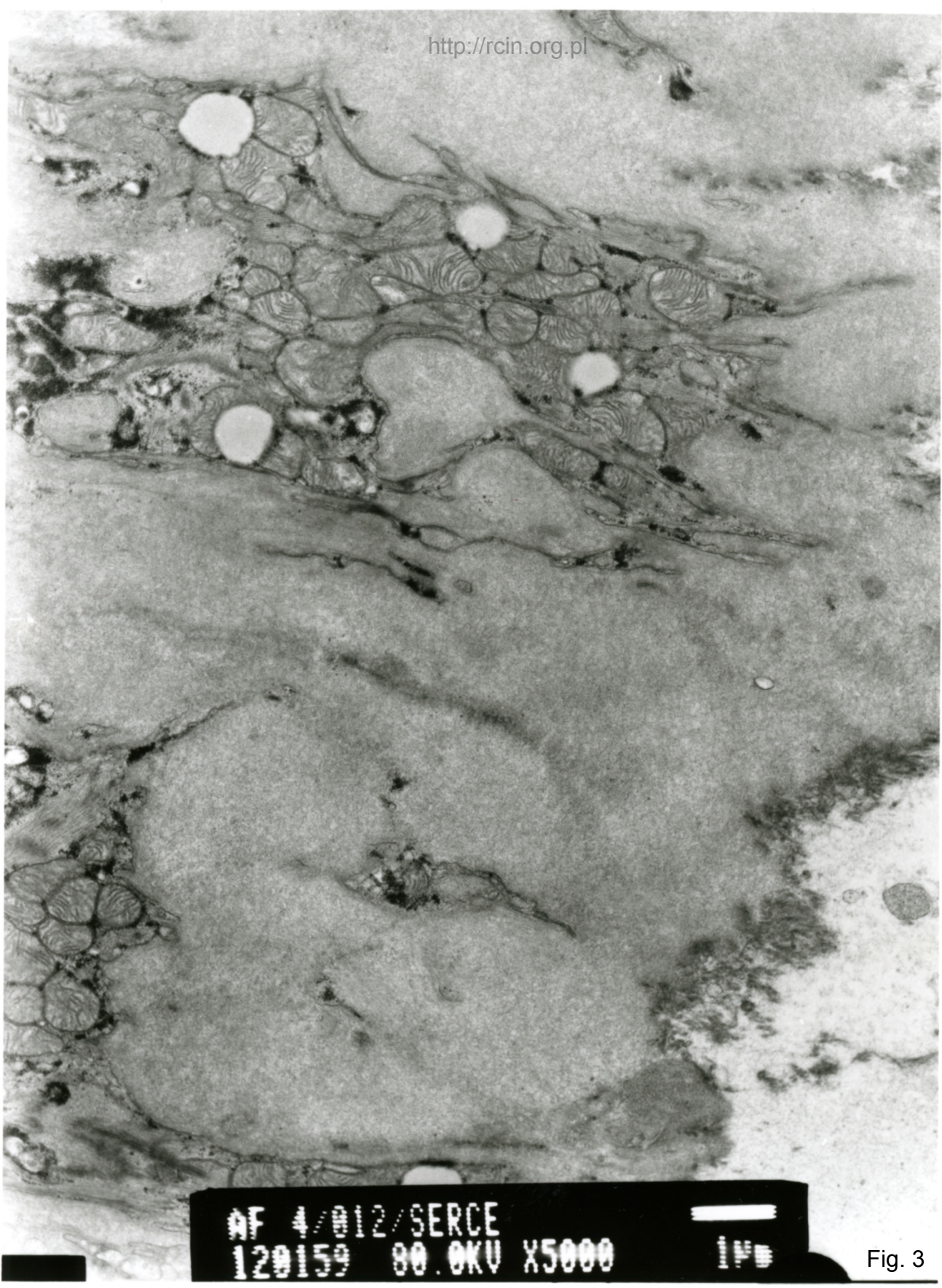
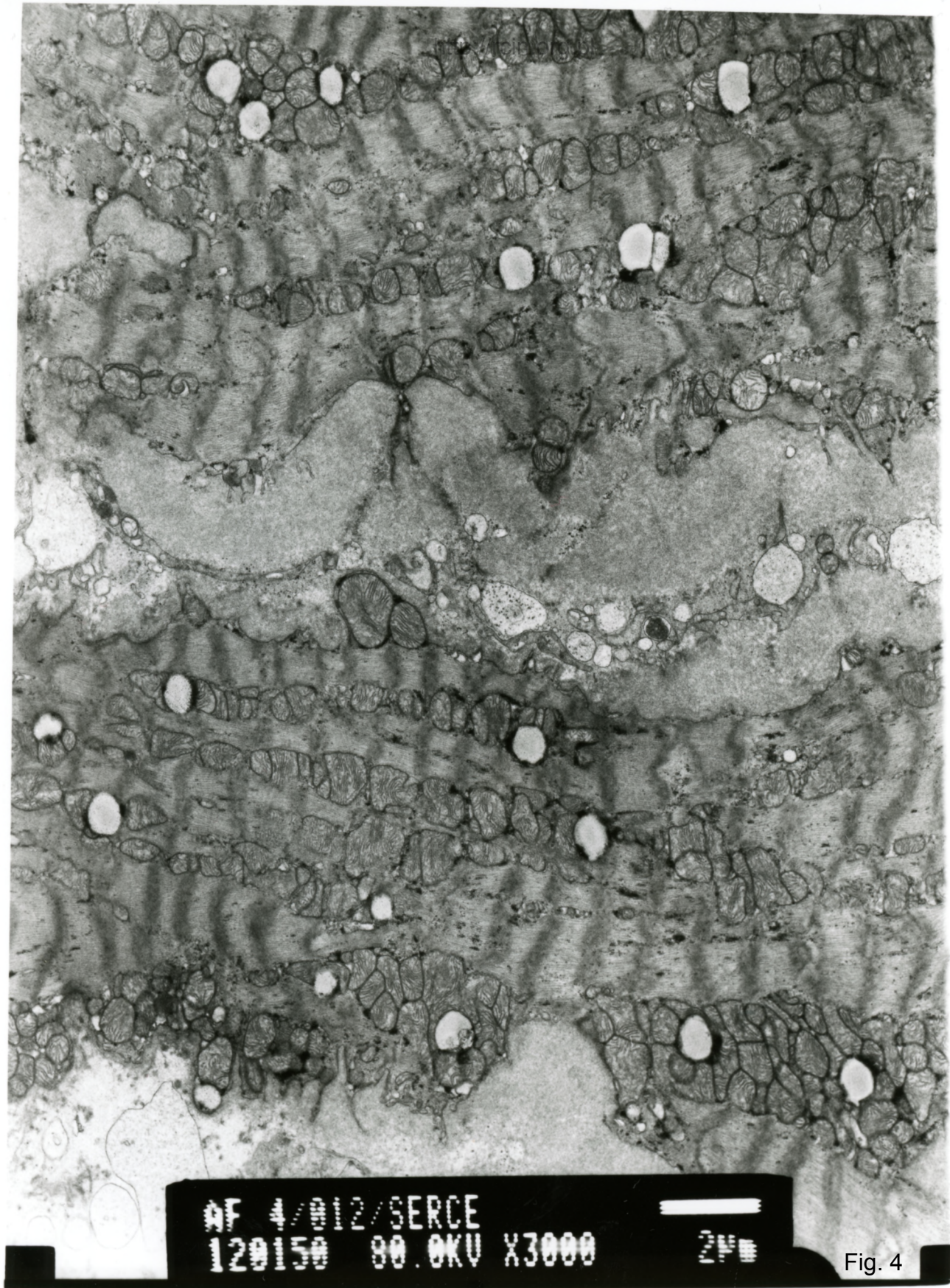


Fig. 3





AF 4/012/SERCE  
120150 80.0KV X3000

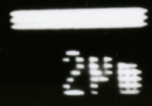
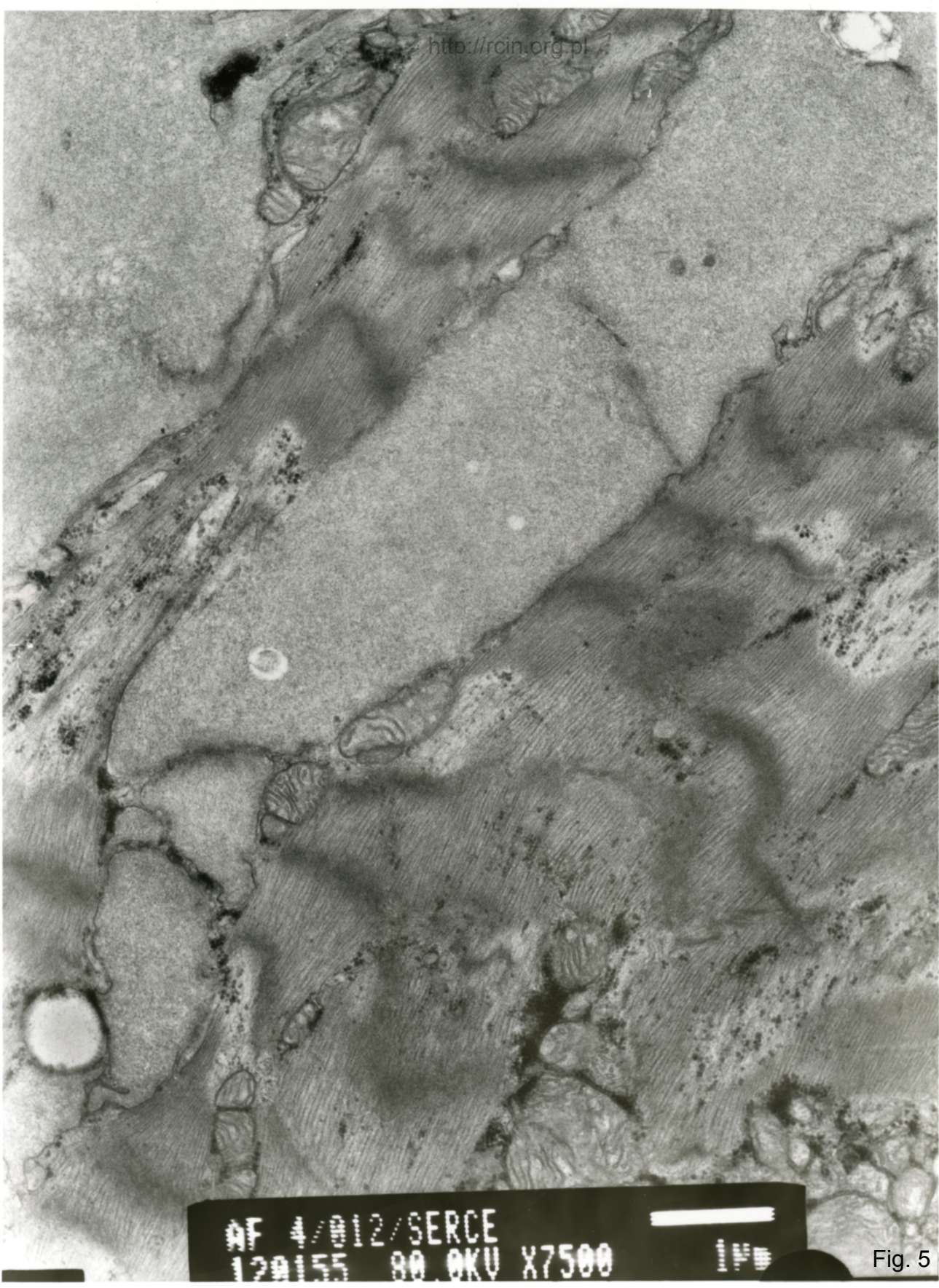
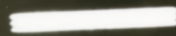


Fig. 4





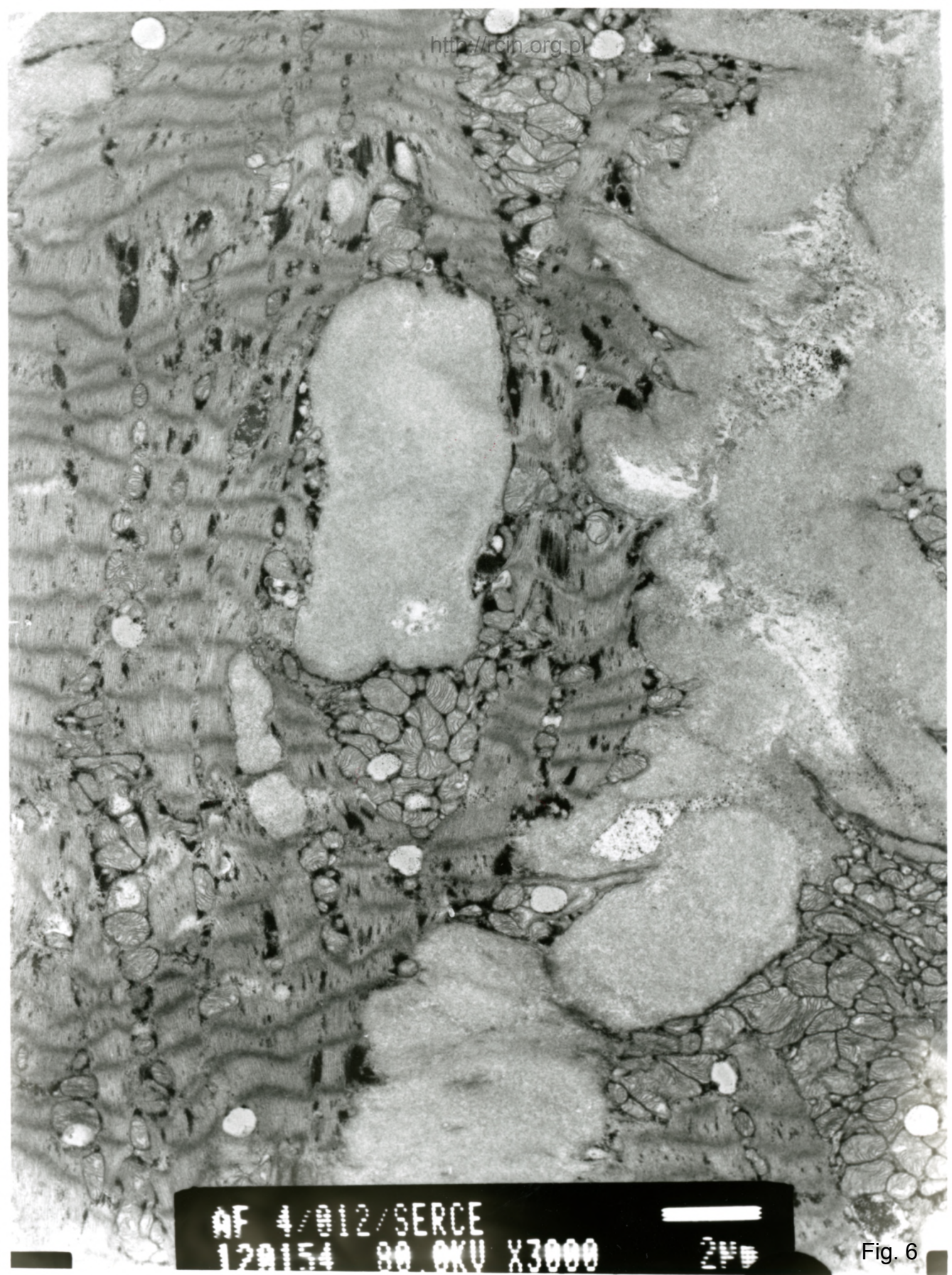
AF 4/012/SERCE  
120155 80.0KV X7500



114

Fig. 5





AF 4/012/SERCE  
120154 00 OKU X3000 ZF

Fig. 6





AF 4/012/SERCE  
120151 00.0KV

X20K

200nm

Fig. 7

### Zapalenie mięśnia sercowego

Analiza ultrastrukturalna wykazała brak zmian morfologicznych w kardiomiocytach. W poszerzonej przestrzeni zewnątrzkomórkowej obecne były szerokie pasma włóknistego materiału o morfologii włókienek amyloidowych (Fig. 1,2,3,4,5,6,7).

### Myocarditis

Ultrastructural analysis did not reveal morphological changes in cardiomyocytes. Extracellular space was enlarged and wide bands of fibrous material of amyloid fibrils morphology were present (Figs. 1,2,3,4,5,6,7).