

12/08

Zapalenie mięśnia sercowego

Analiza ultrastrukturalna wykazała zmiany w układzie sarkomerów (Fig. 1). Przebieg miofibryli był nieregularny. W cytoplazmie kardiomiocytów obecne były liczne heterogenne mitochondria o zróżnicowanej morfologii (Fig. 2, 3, 4, 5, 6, 7).

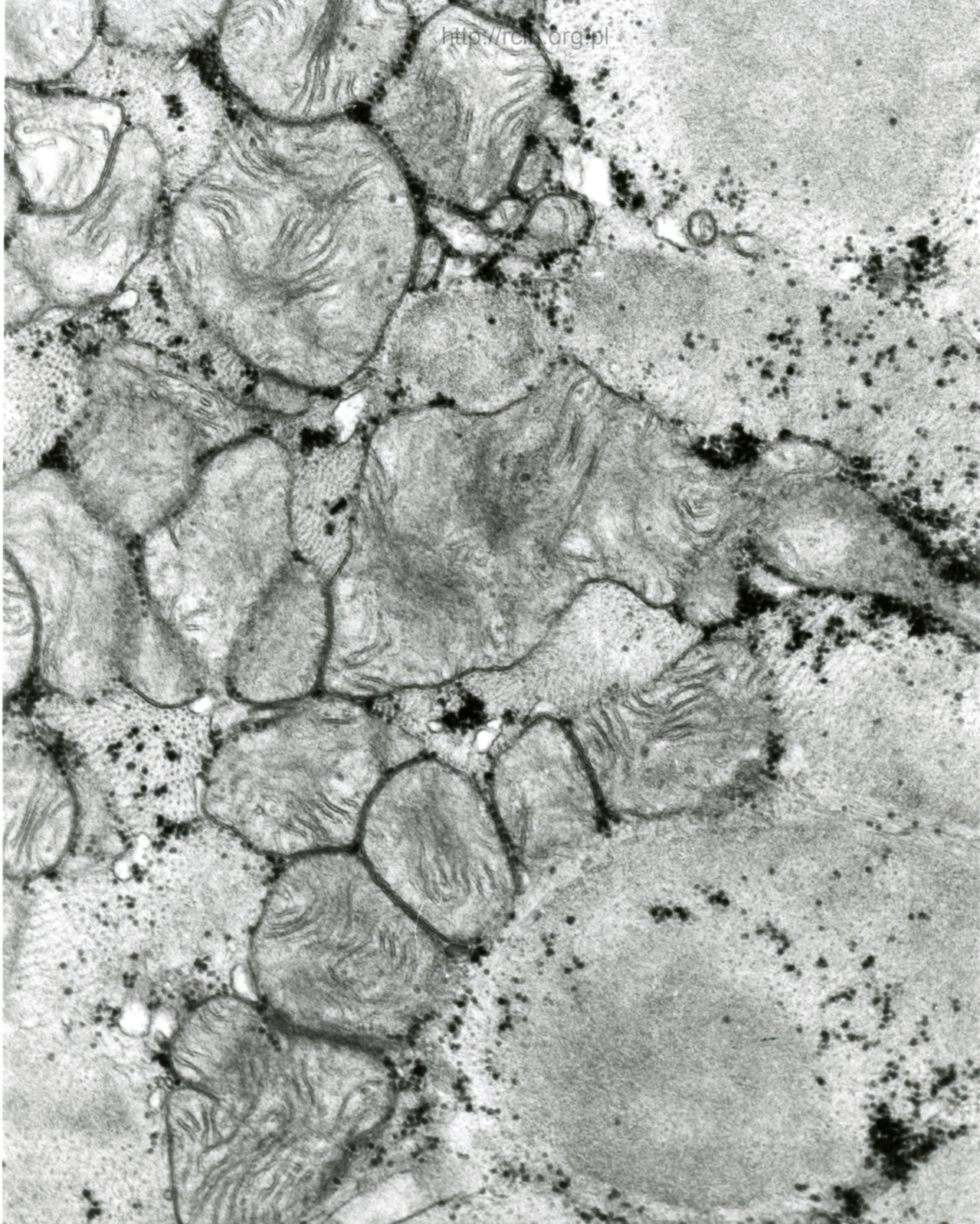
Myocarditis

Ultrastructural analysis revealed changes in the sarcomere pattern (Fig. 1). The course of the myofibrils was irregular. In the cardiomyocytes cytoplasm numerous heterogeneous mitochondria of various morphology were present (Figs. 2, 3, 4, 5, 6, 7).



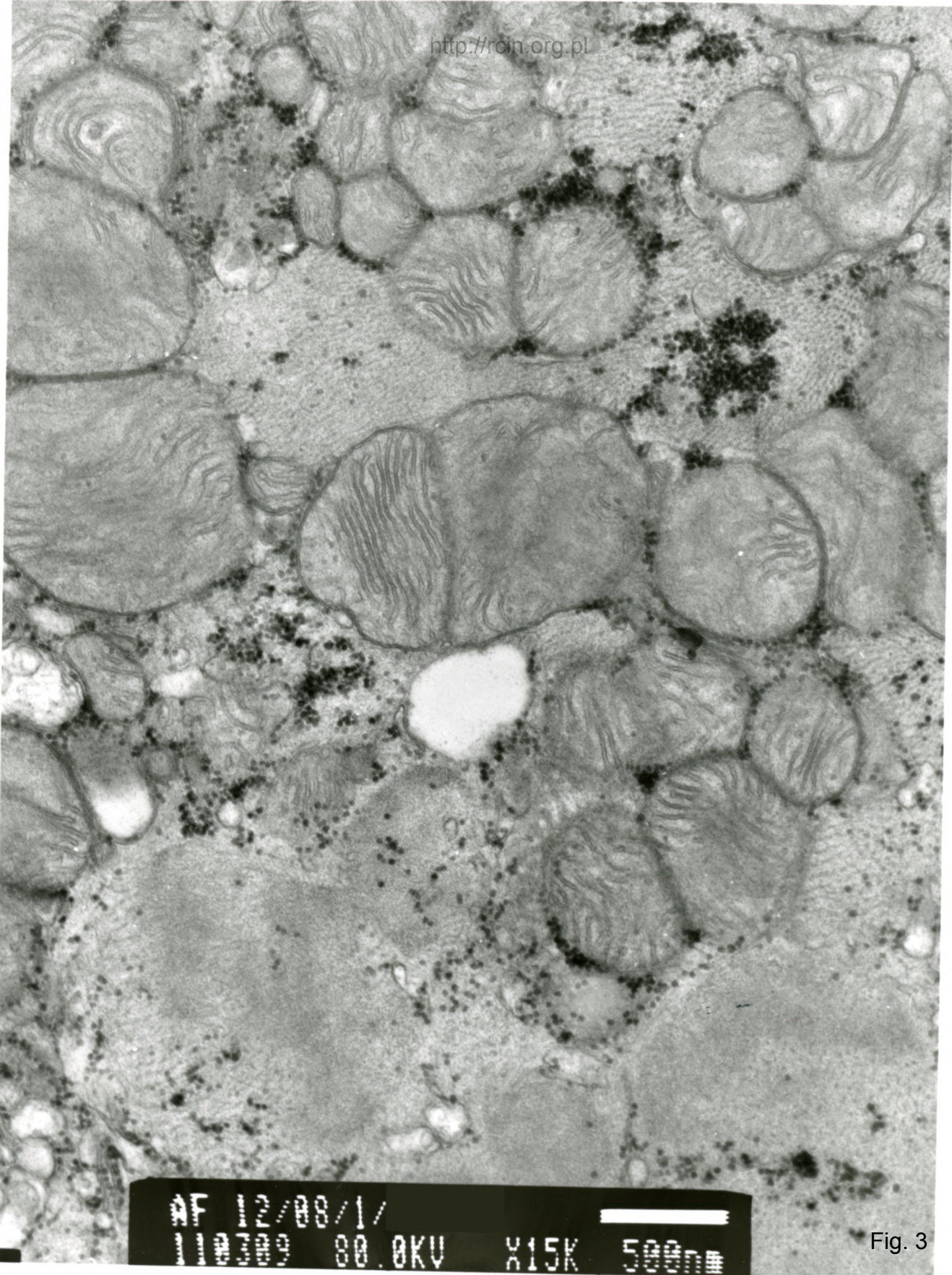
AF 12/08/1/
110700 80.0KV X3000 2µm

Fig. 1



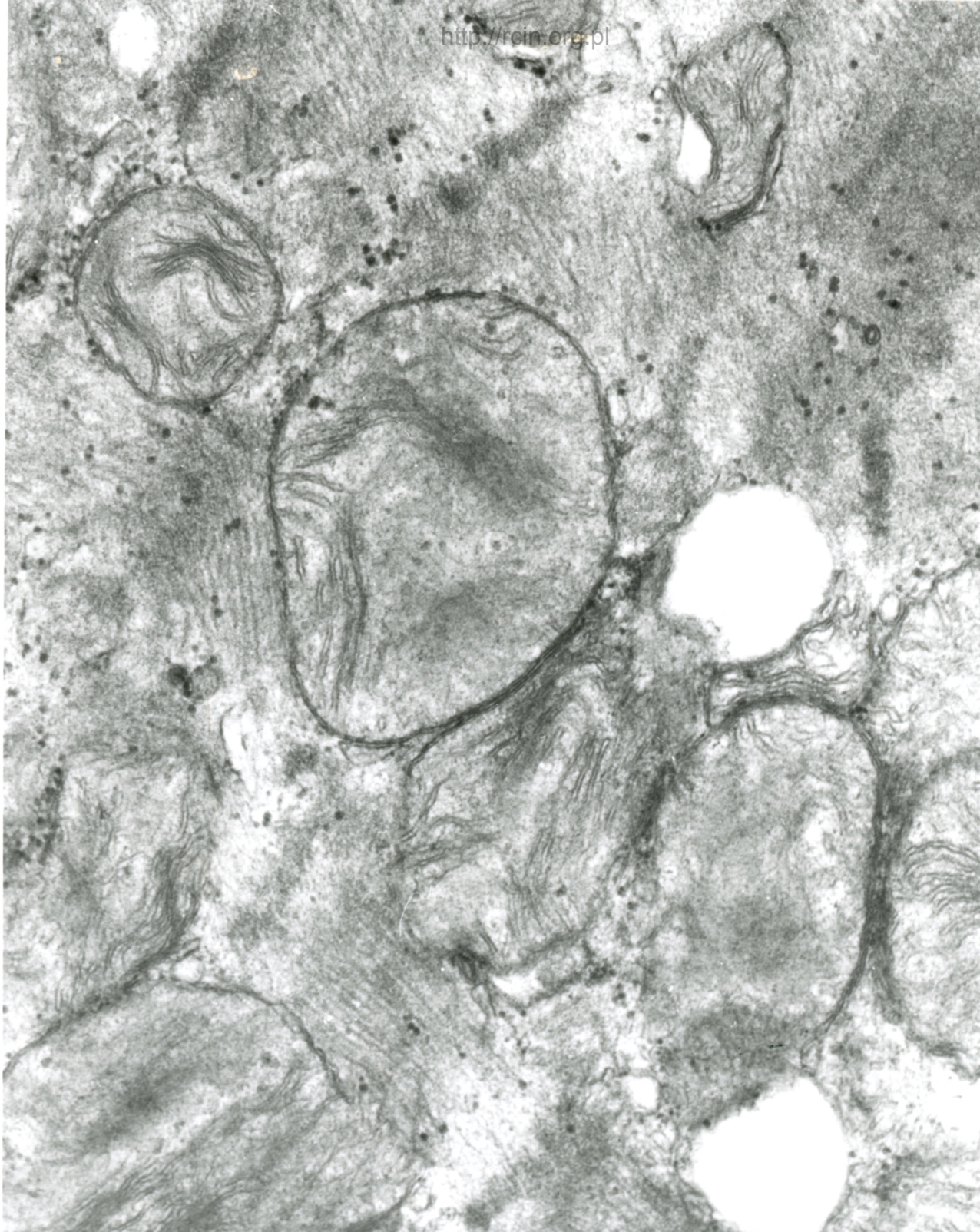
AF 12/88/1/
110310 80.0KV X15K 500nm

Fig. 2



AF 12/08/1/
110709 80.0KV X15K 500nm

Fig. 3

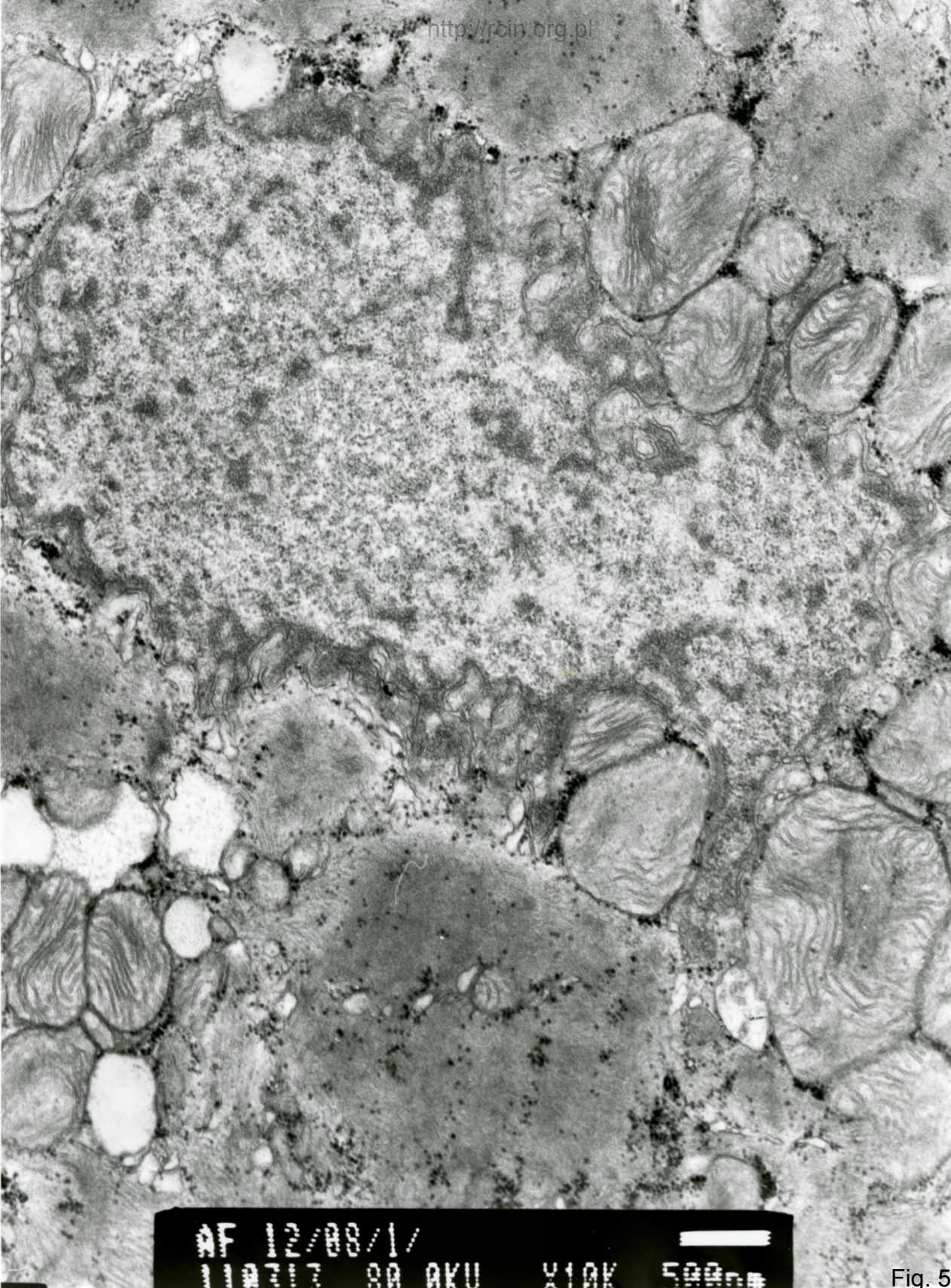


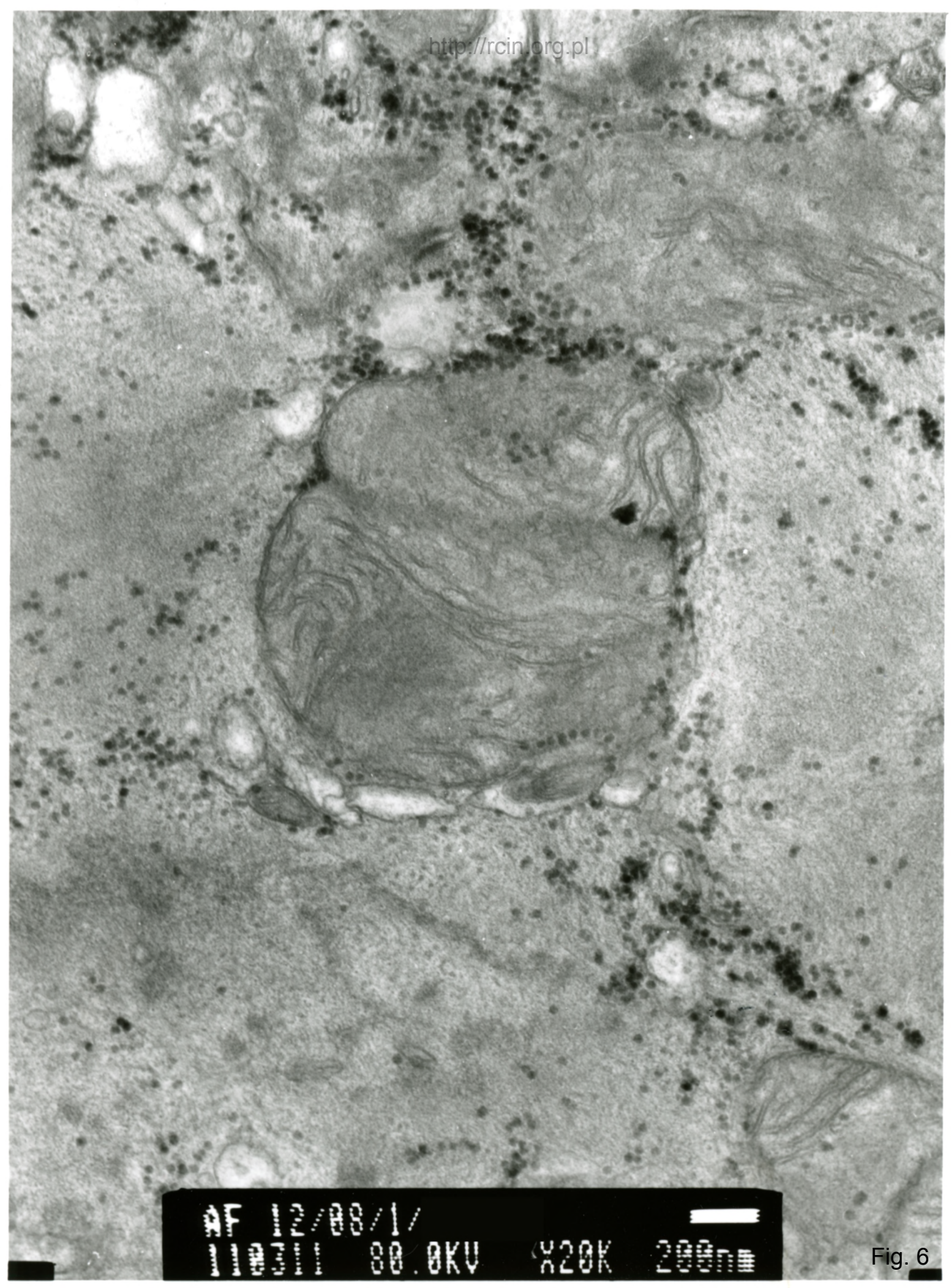
AF 12/08/1/
110312 80.0KV X20K 200nm

Fig. 4

AF 12/08/1/
110313 30.0KV X10K 500nm

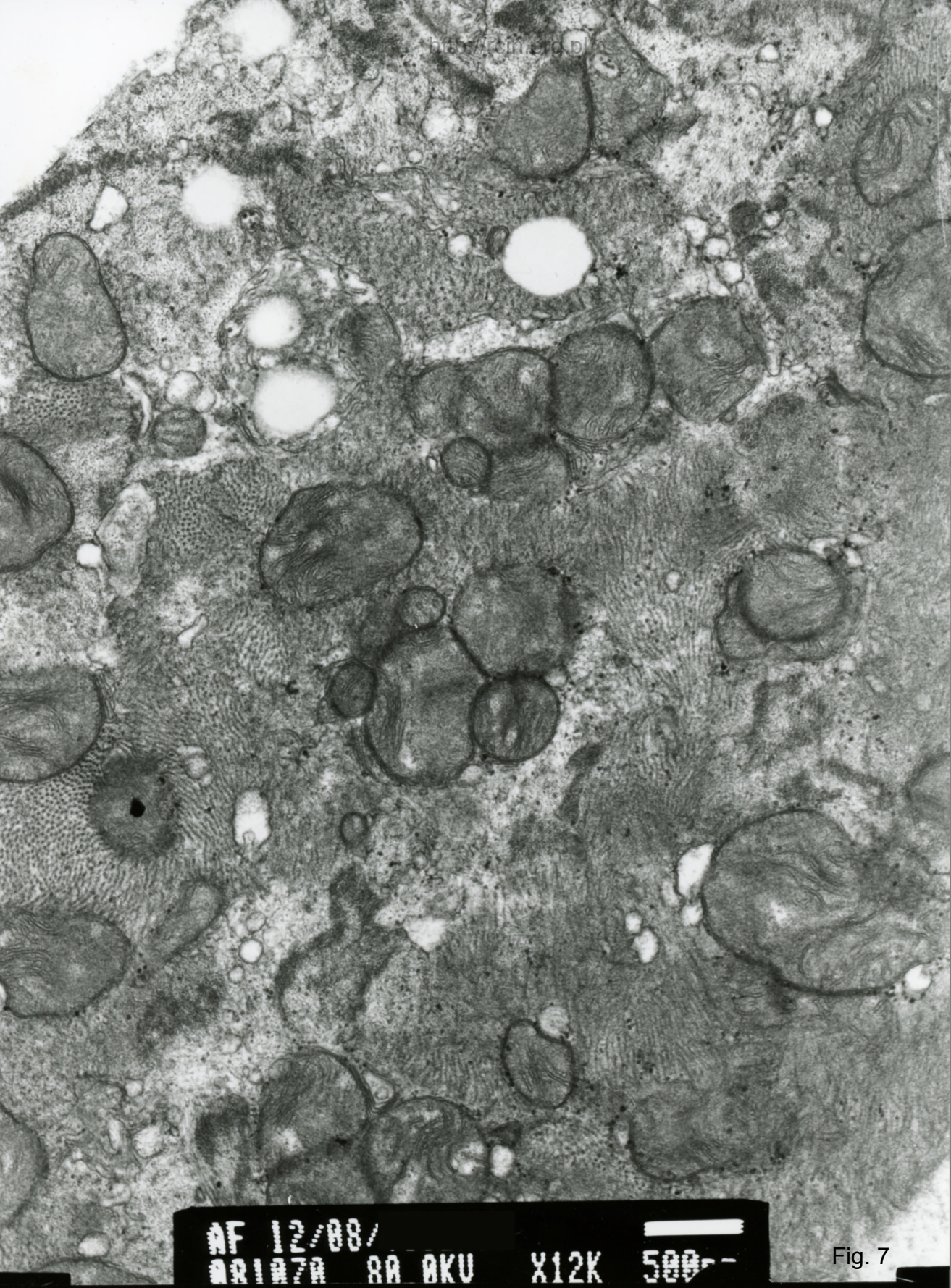
Fig. 5





AF 12/08/1/
110011 80.0KV X20K 200nm

Fig. 6



http://www.erd.pl

AF 12/88/
08107A 8A 0KU X12K 500-

Fig. 7