

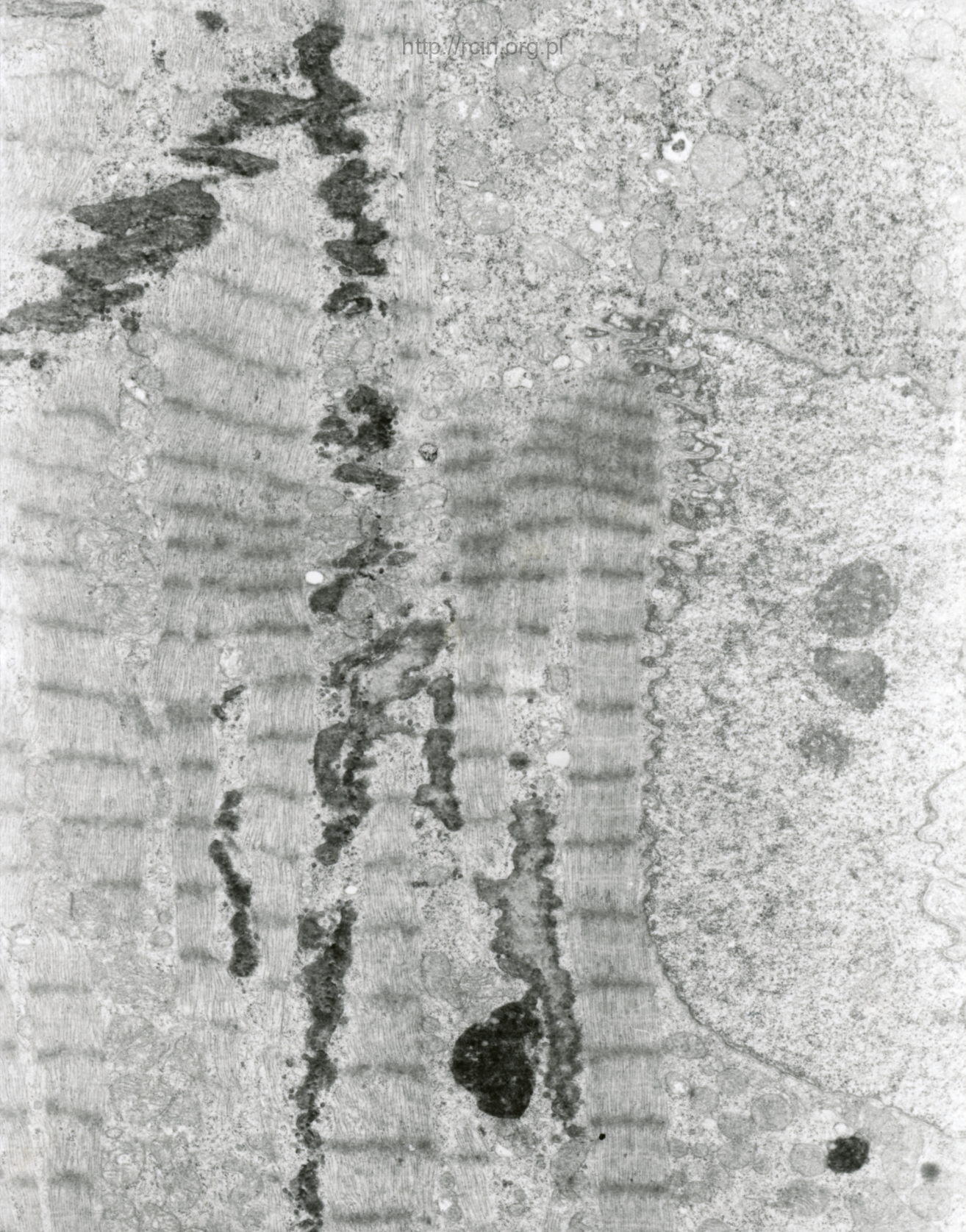
24/07

Twardzina

Analiza ultrastrukturalna wykazała cechy cytolizy kardiomiocytów (Fig. 1). Przestrzeń zewnątrzkomórkowa poszerzona i wypełniona włóknkami tkanki łącznej (Fig.2,3).

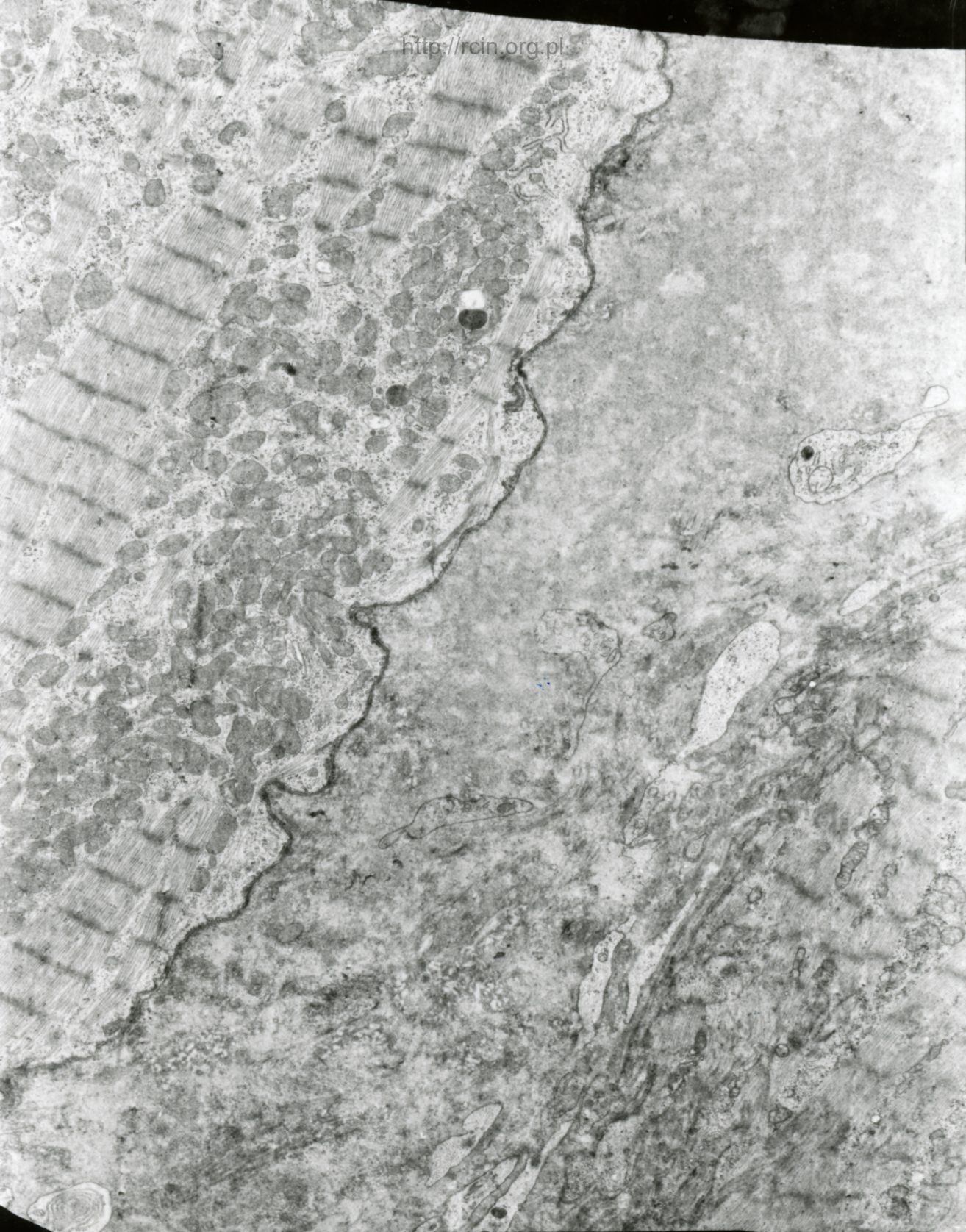
Scleroderma

Ultrastructural analysis revealed features of cardiomyocyte cytolysis (Fig. 1). The extracellular space was widened and filled with connective tissue fibrils (Fig. 2.3).



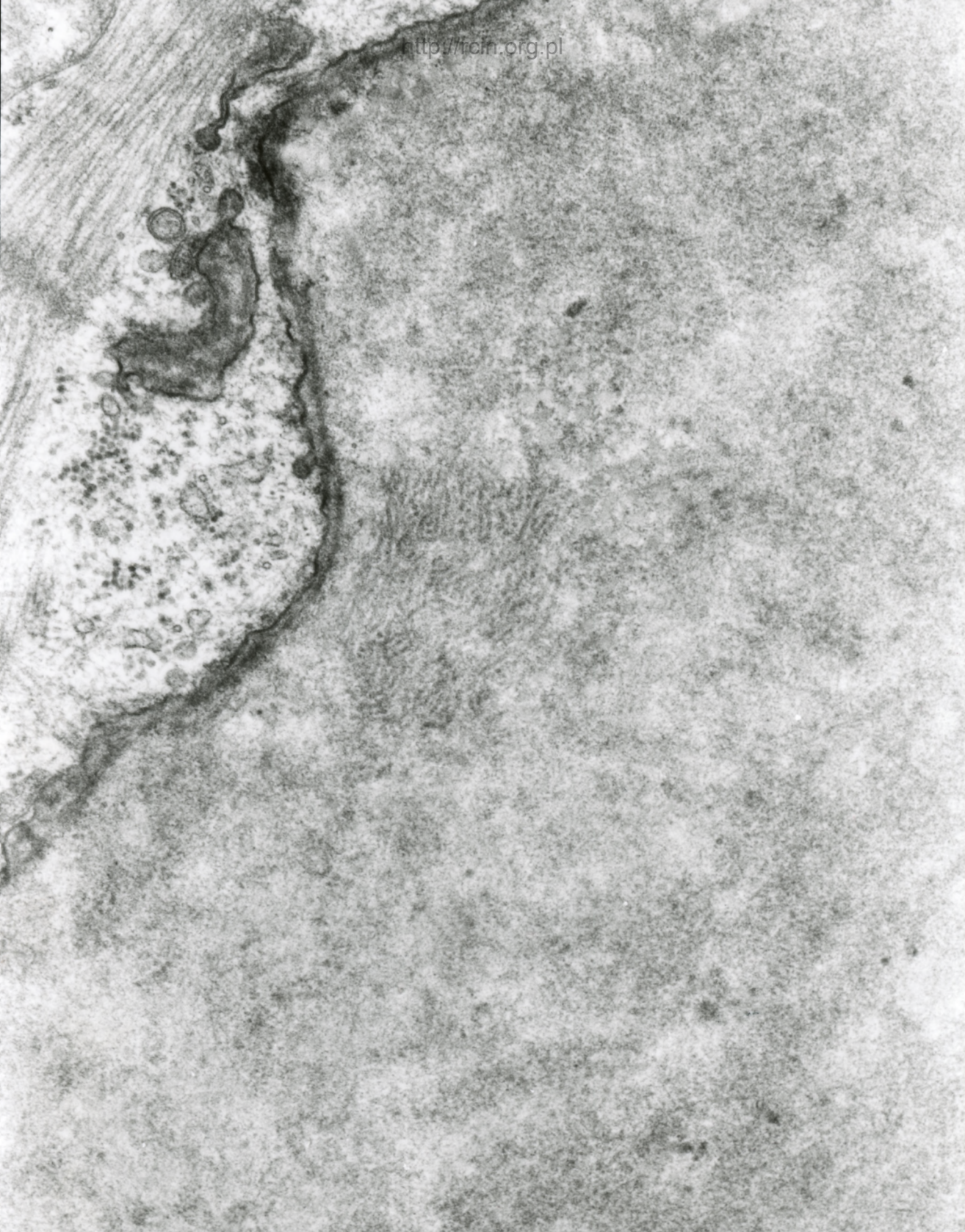
AF 24/07/SERCE
071570 00 RKU Y4000 3u

Fig. 1



MF 24/07/SERCE
071572 88 AKU X3000

Fig. 2



AF 24/07/SERCE
071573 80.0KV X20K 200nm

Fig. 3