

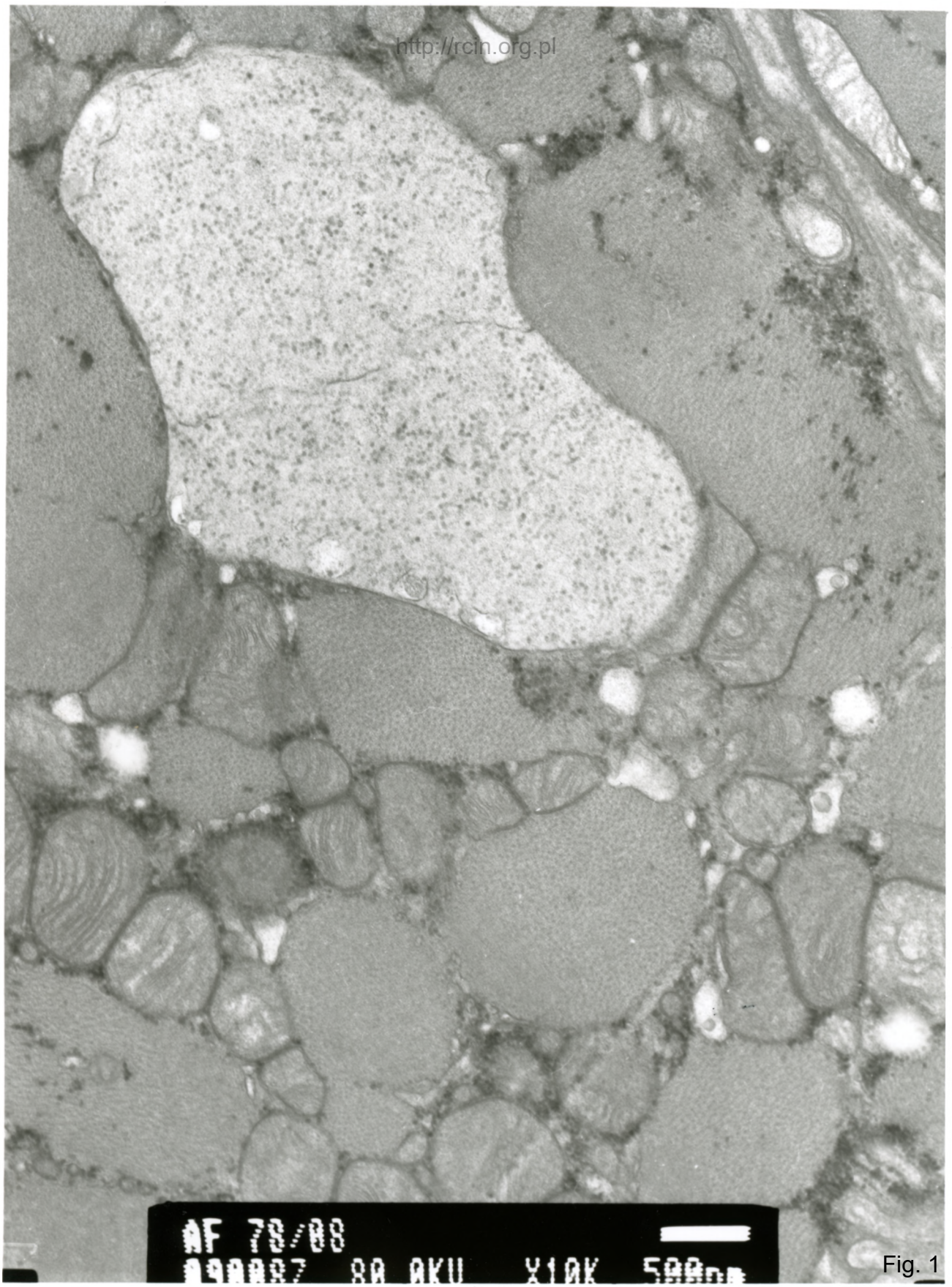
78/08

Toksyczne uszkodzenie mięśnia sercowego

Analiza ultrastrukturalna wykazała obrzęk siateczki śródplazmatycznej w wielu kardiomiocytach (Fig. 1,2,3). Mitochondria w takich obszarach posiadały cechy obrzęku (Fig. 4). Jądra kardiomiocytów charakteryzowały się nieregularnym kształtem (Fig. 5,6,7).

Heart muscle toxic damage

Ultrastructural analysis revealed signs of edema of sarcoplasmic reticulum (Fig. 1,2,3) and mitochondria (Fig. 4) in many cardiomyocytes. Cardiomyocyte nuclei were irregularly shaped (Fig. 5,6,7).



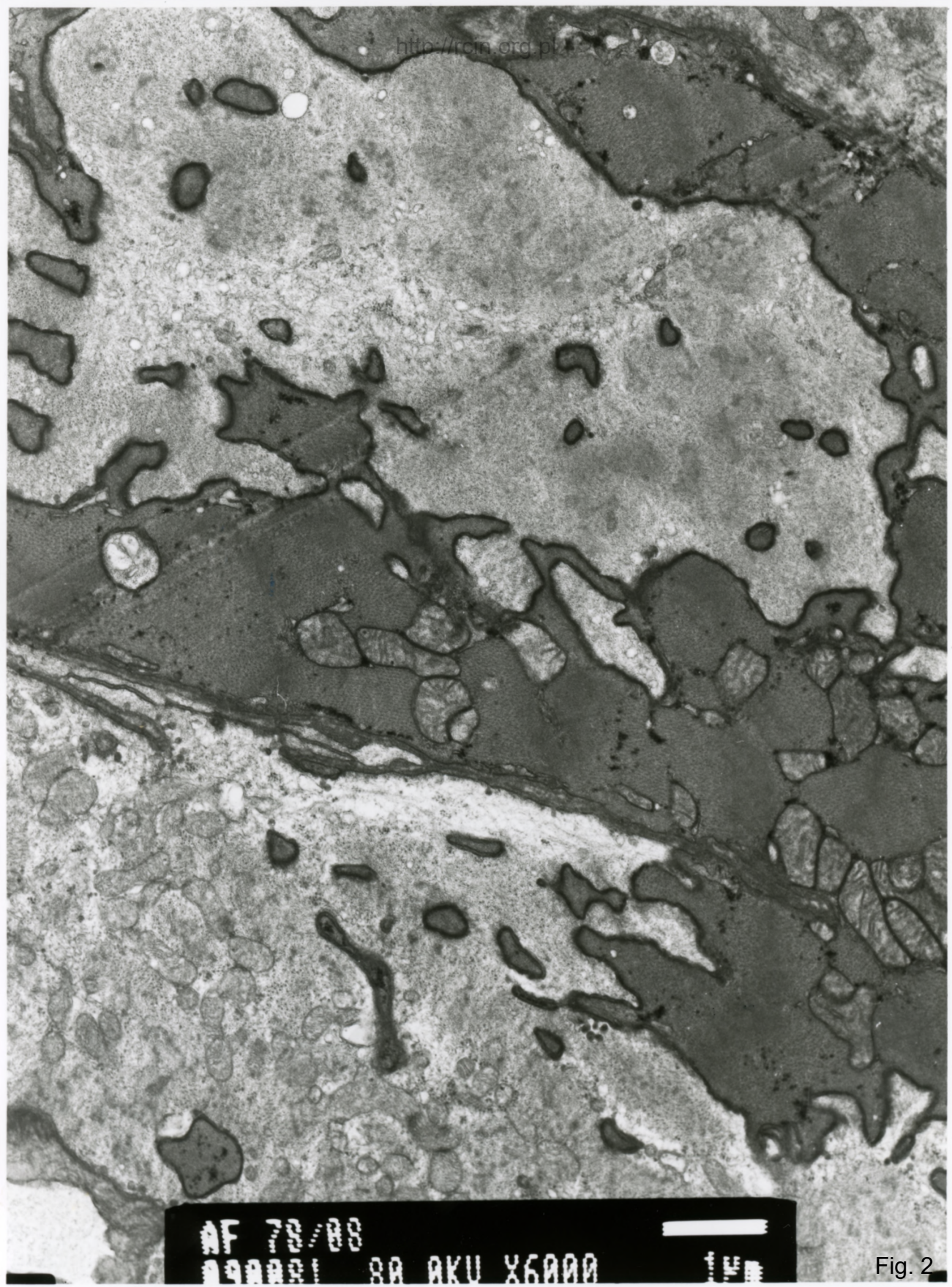
AF 72/88

090007

80 kV

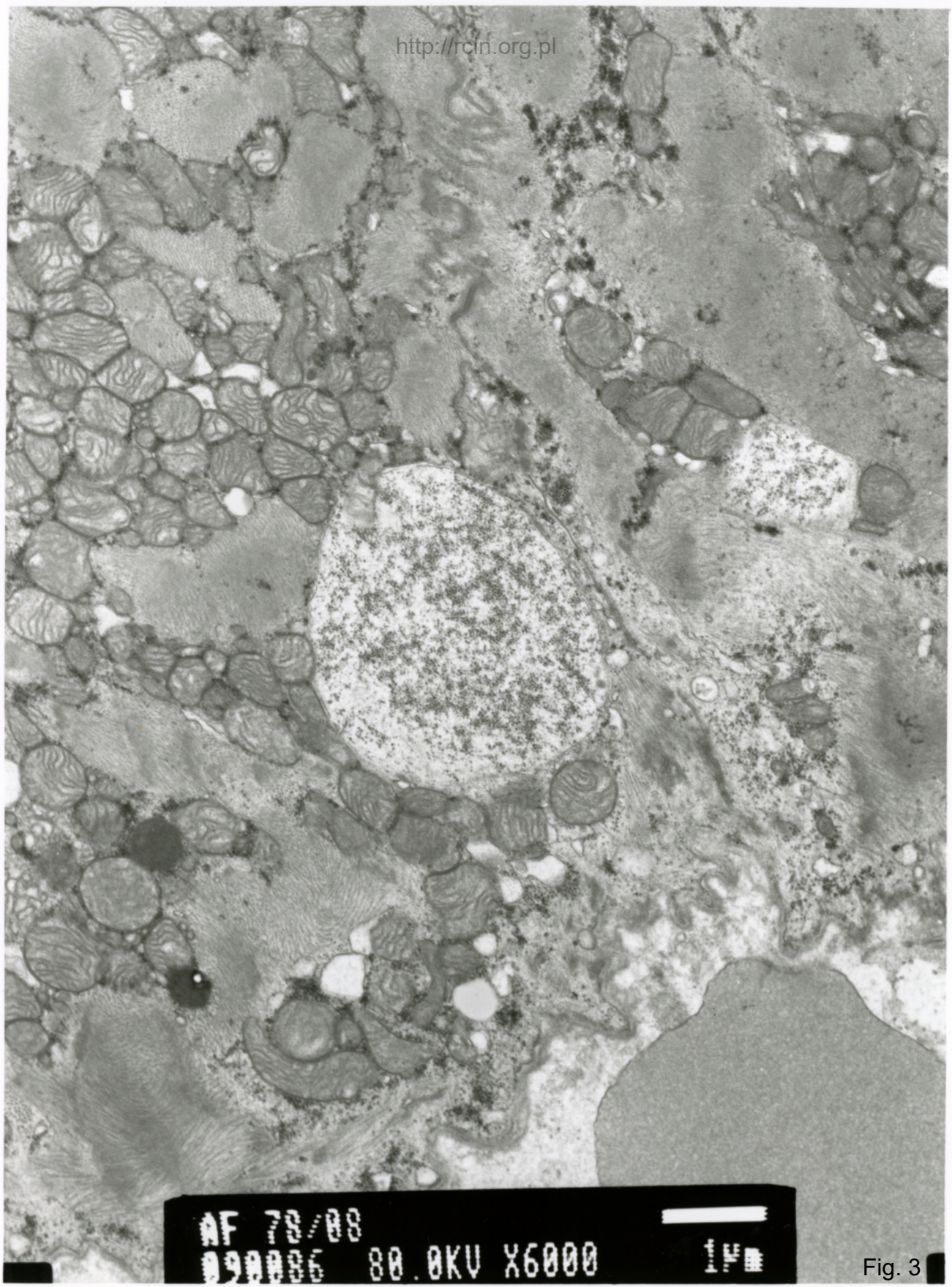
X10K

500nm



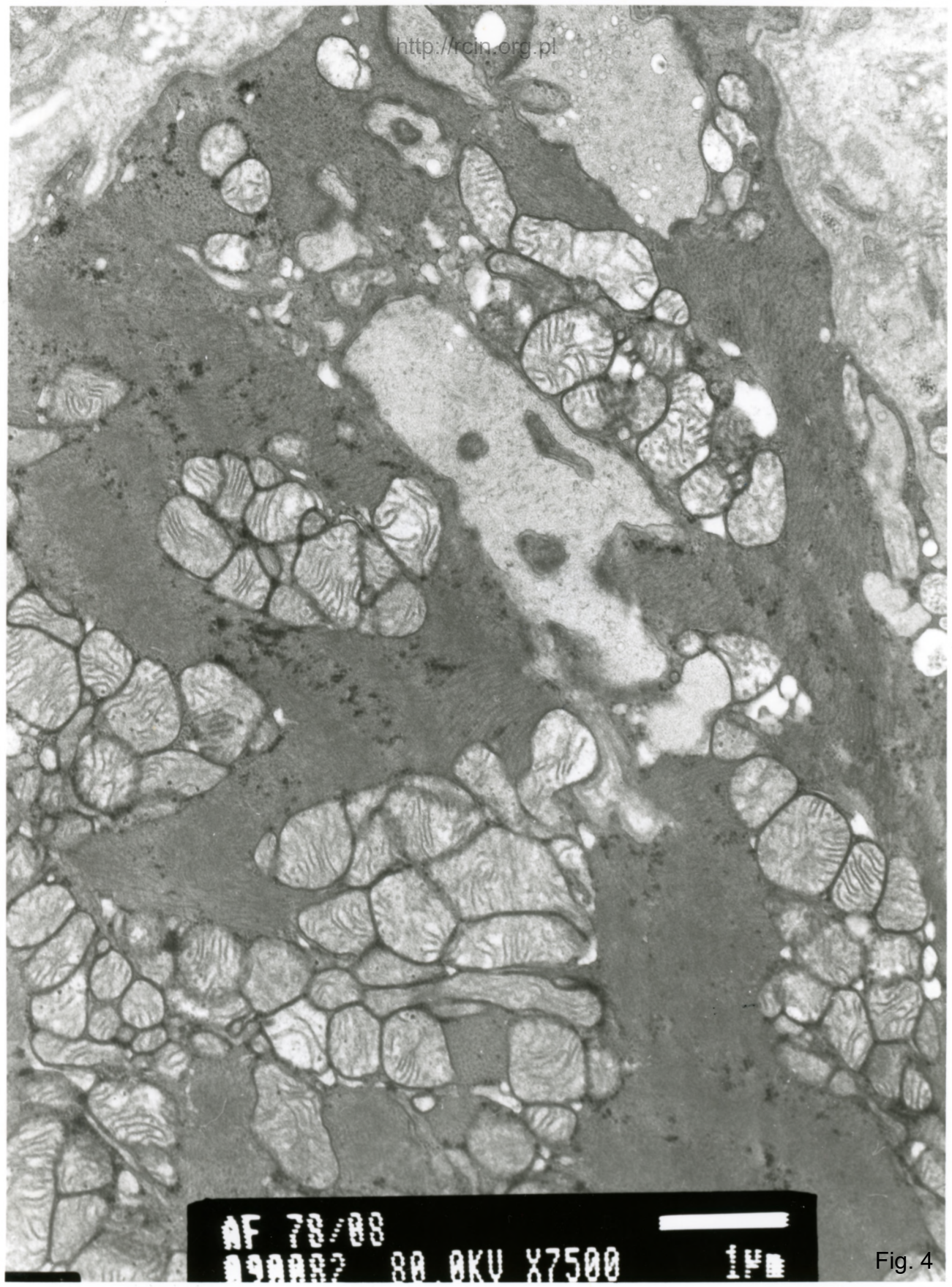
AF 78/88
000001 80 AKU X6000

Fig. 2



AF 78/88
090006 80.0KV X6000 1µm

Fig. 3

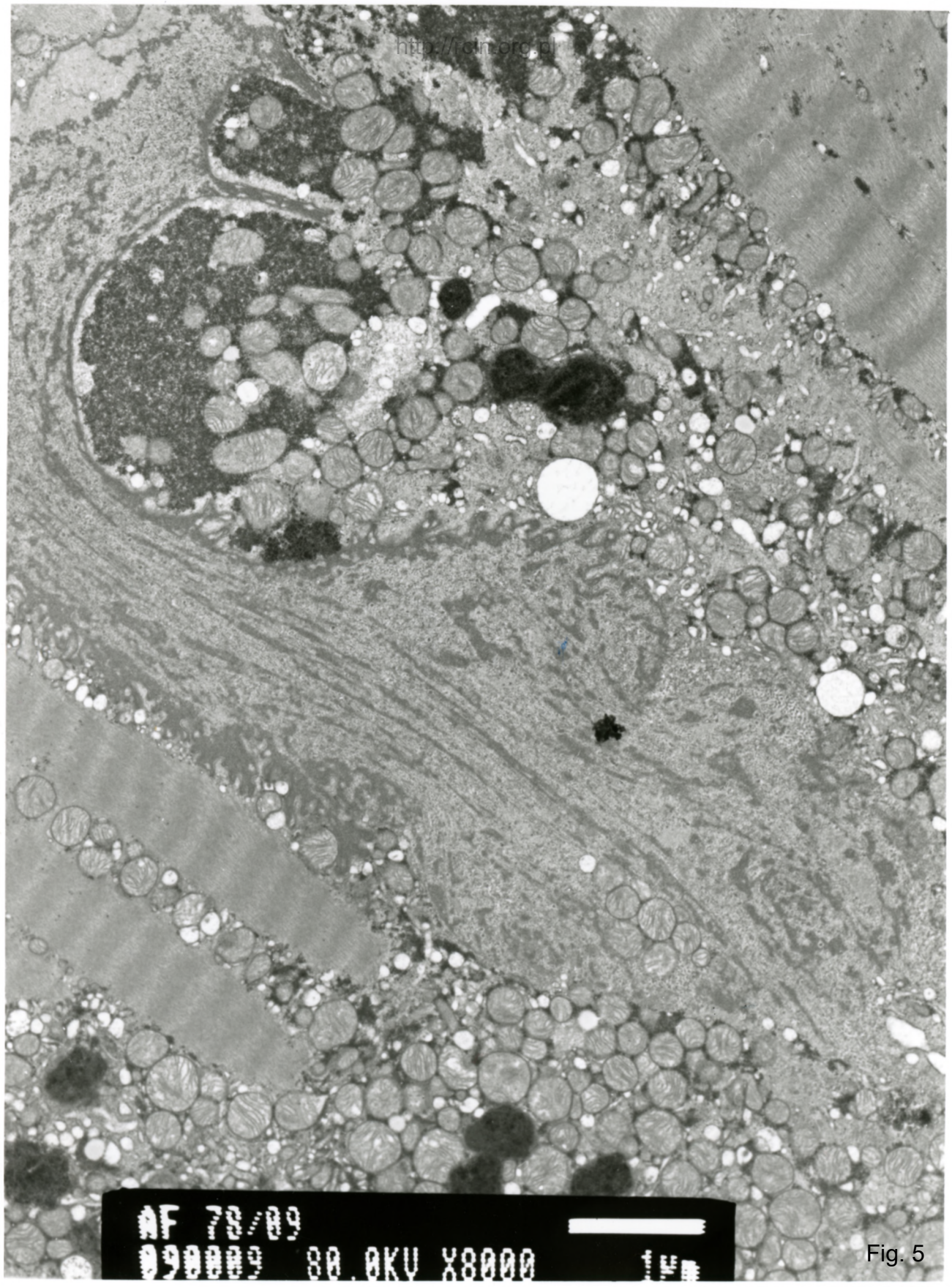


AF 78/88

090082 80.0KV X7500

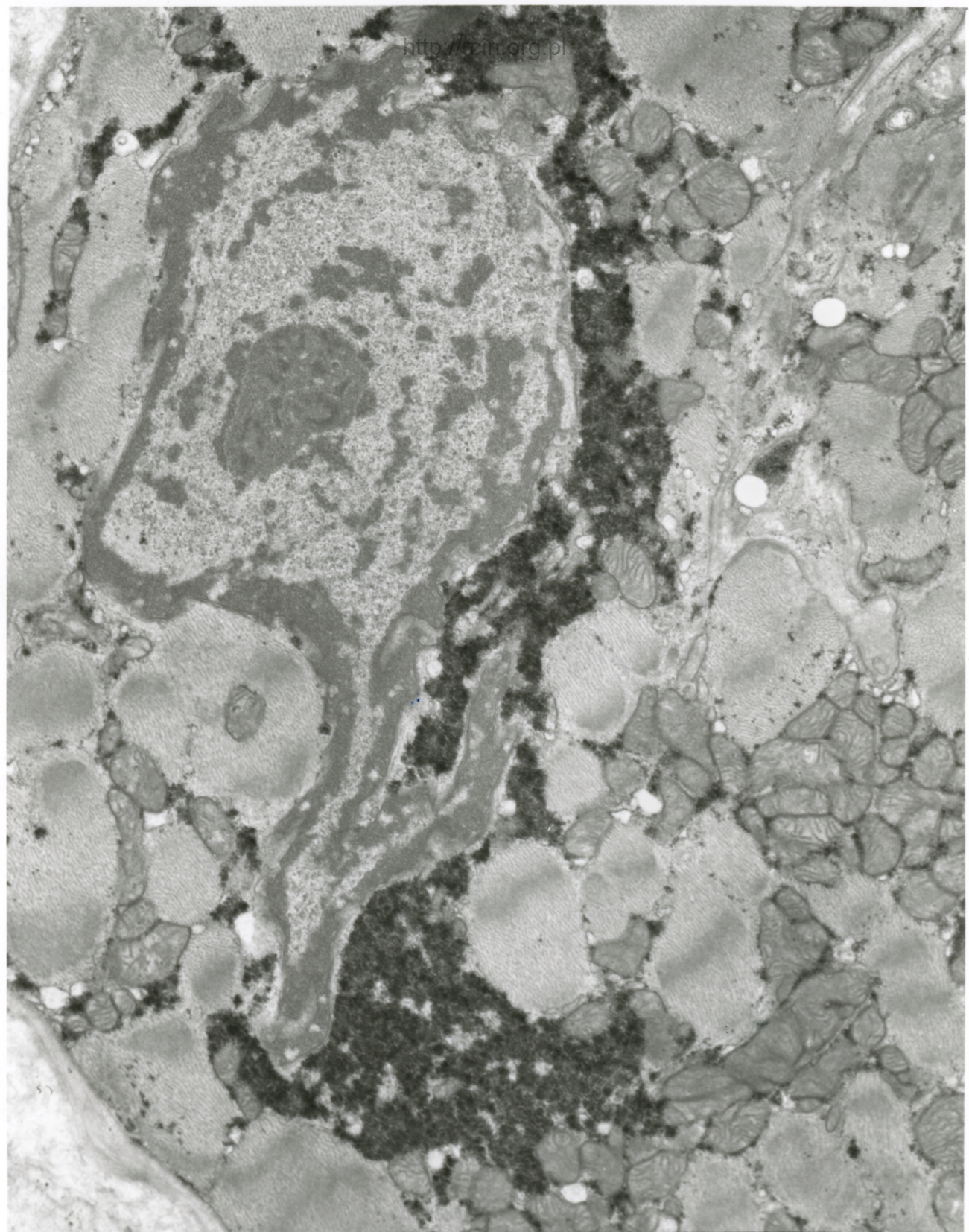
1µm

Fig. 4



AF 78/09
090009 80.0KV X8000 1µm

Fig. 5



AF 72/88

000001 00 0XU Y5000

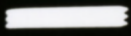
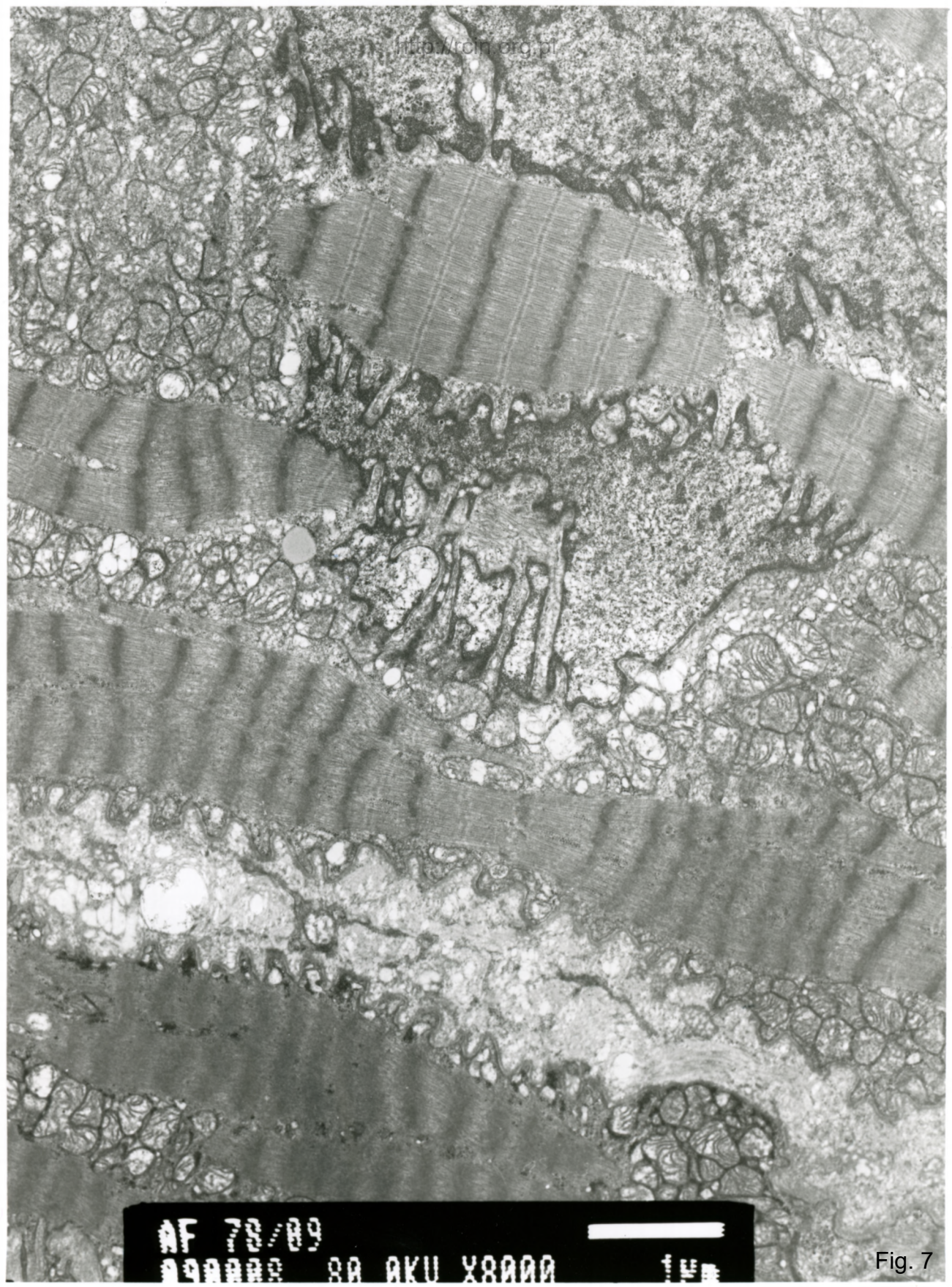


Fig. 6



AF 72/09
000000 80 0KU X8000 1μm

Fig. 7