

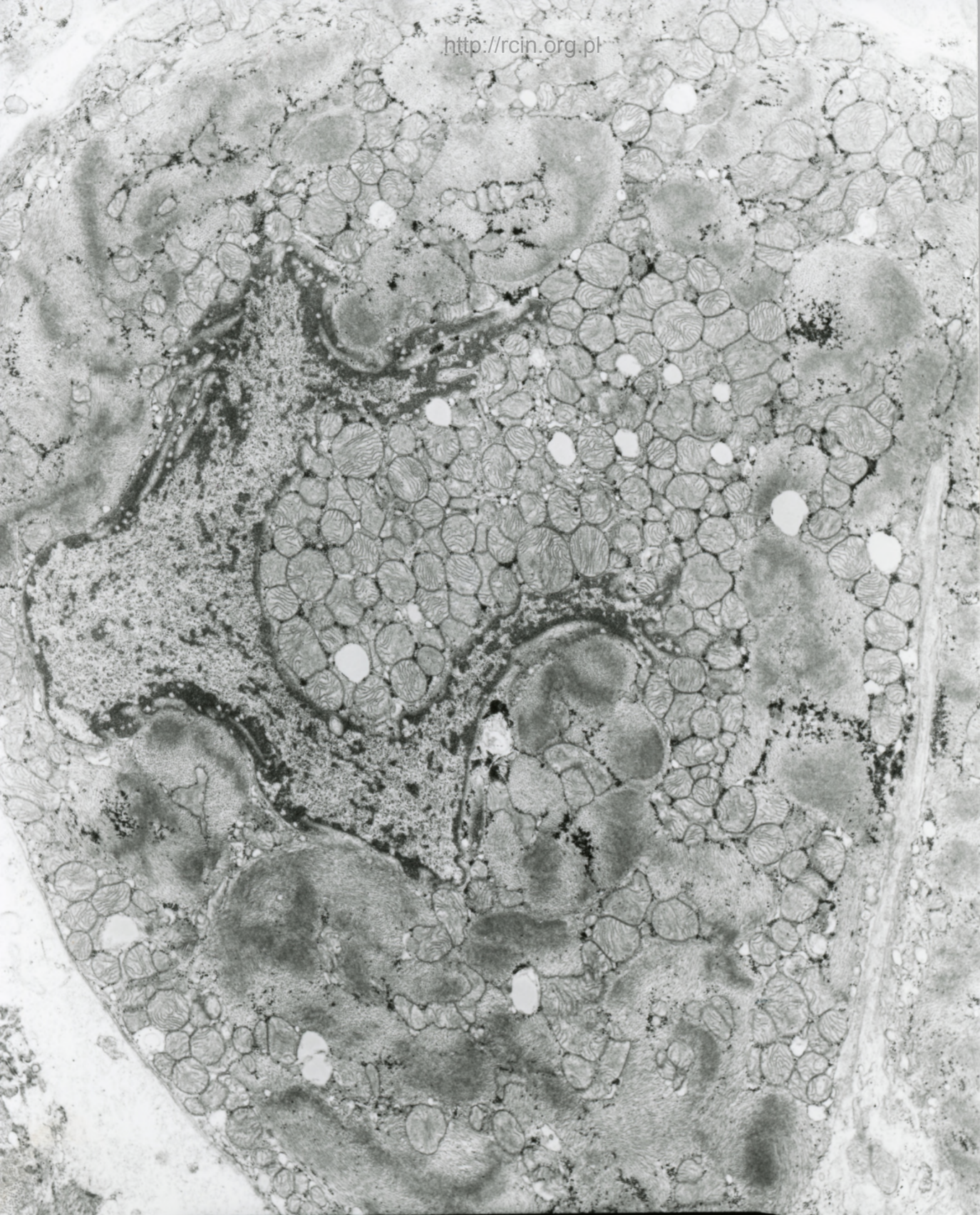
40/08

Kardiomiopatia rozstrzeniowa

Analiza ultrastrukturalna wykazała nieregularny układ sarkomerów oraz nieregularny kształt jąder (Fig. 1,2). W cytoplazmie kardiomiocytów licznie występowały ziarna glikogenu (Fig. 3).

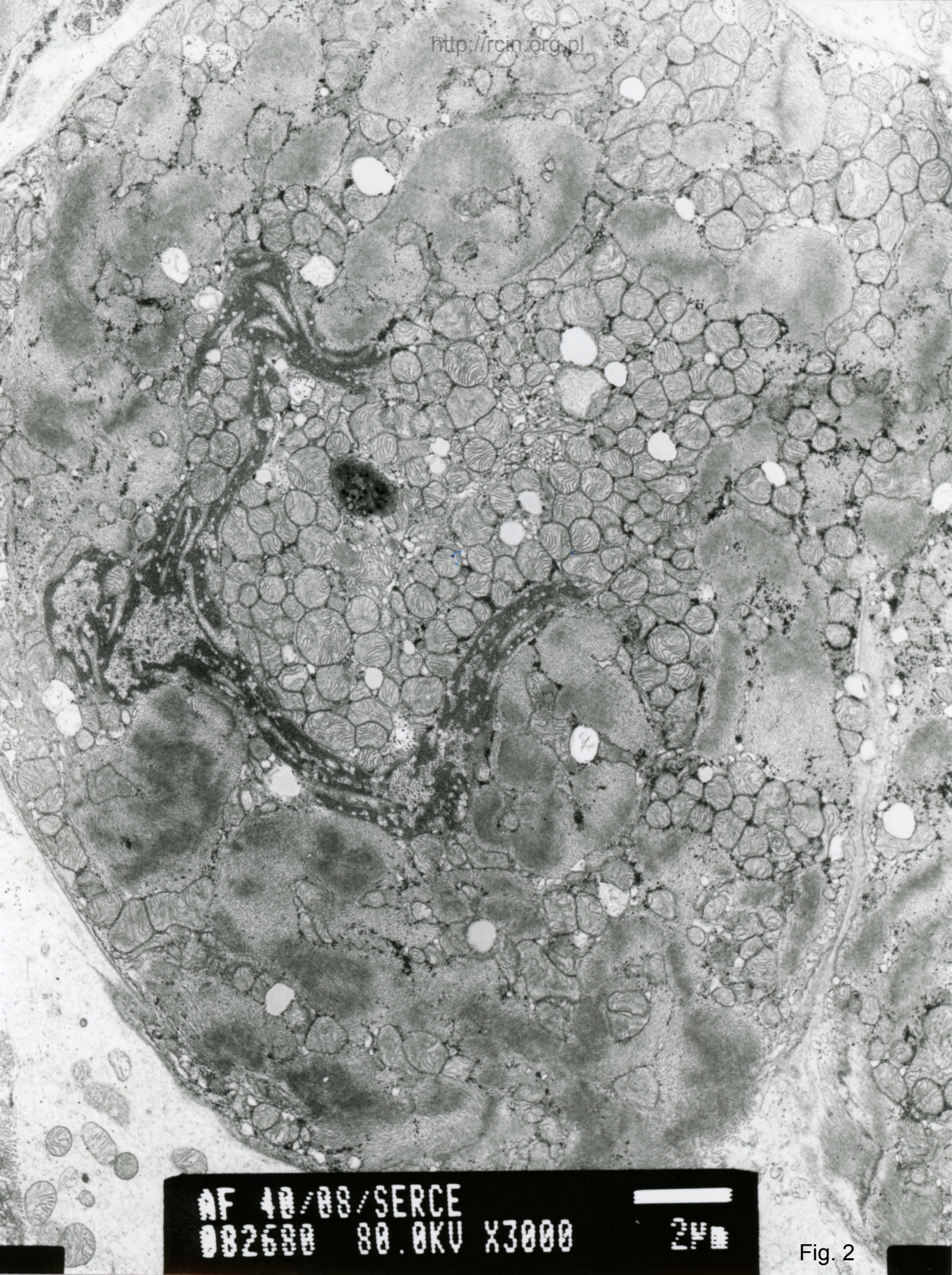
Dilated cardiomyopathy

Ultrastructural analysis revealed an irregular arrangement of the sarcomeres and an irregular shape of the cardiomyocytes nuclei (Figs. 1,2). Abundant glycogen granules were seen in the cytoplasm of cardiomyocytes (Fig. 3).



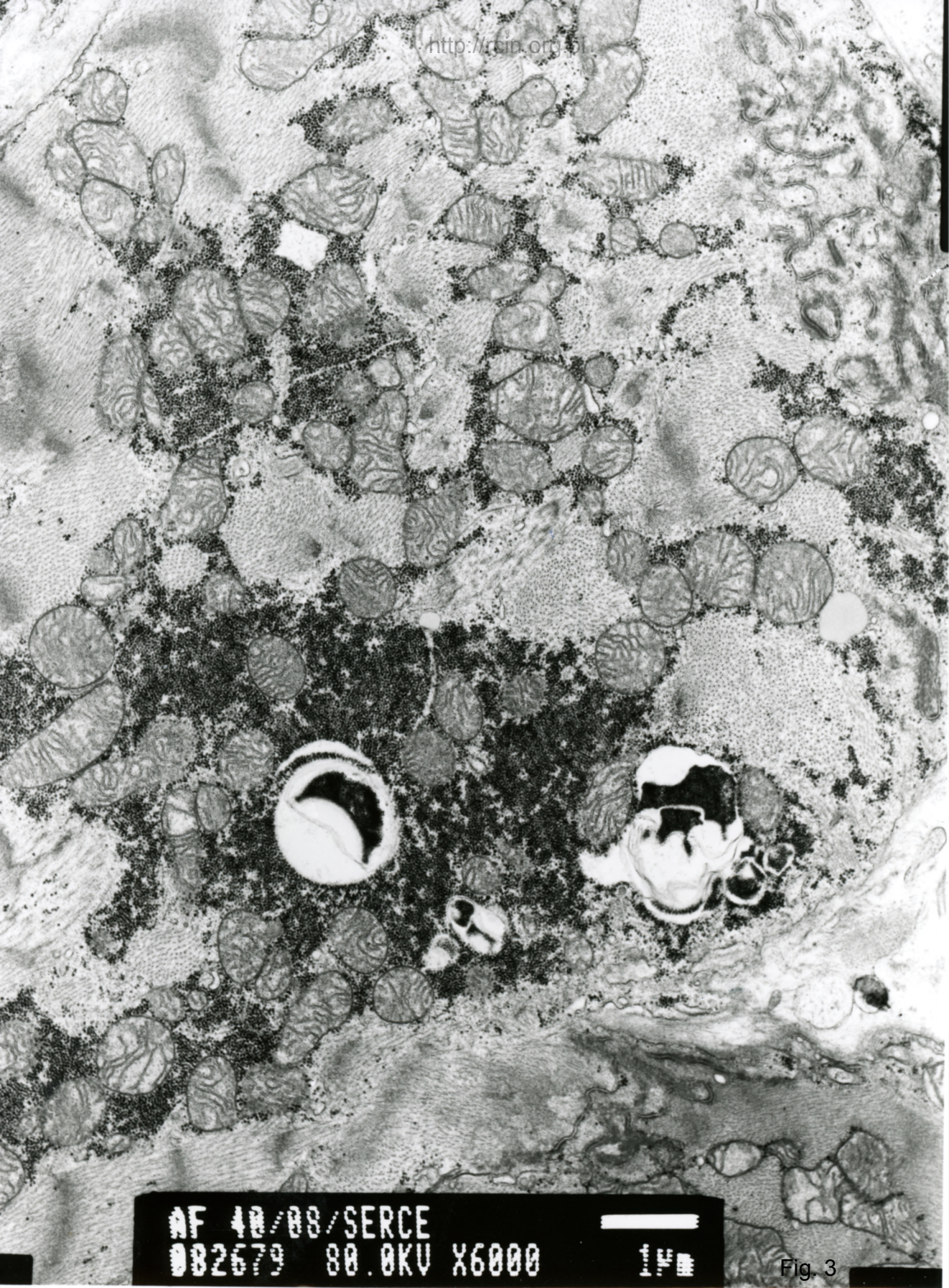
AF 40/08/SERCE
002670 80.0KV X3000 2µm

Fig. 1



AF 40/08/SERCE
082600 80.0KV X3000 2µm

Fig. 2



AF 40/08/SERCE
082679 80.0KV X6000

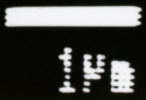


Fig. 3