

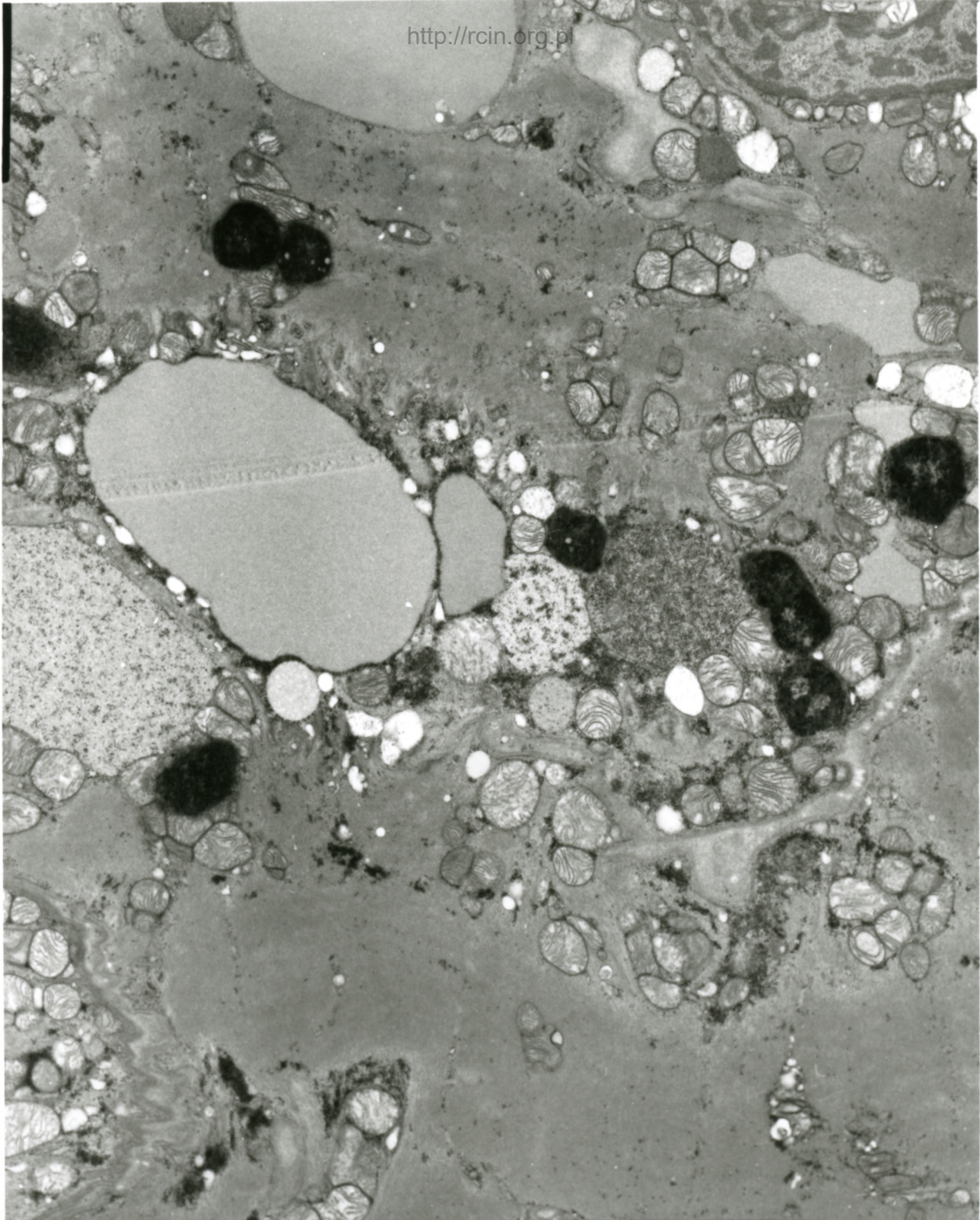
73/08

Niewydolność mięśnia sercowego

W wielu kardiomiocytach zaobserwowano cechy obrzęku siateczki śródplazmatycznej i mitochondriów (Fig. 1,2,3,4). Jądra kardiomiocytów charakteryzowały się nieregularnym kształtem (Fig. 5,6). Komórki śródbłonna naczyń włosowatych posiadały cechy nekrozy (Fig. 7). W niektórych kardiomiocytach widoczna była dezorganizacja aparatu kurczliwego, a komórki te wykazywały cechy cytolizy (Fig. 8).

Heart failure

In many cardiomyocytes endoplasmic reticulum and mitochondria revealed features of edema(Figs. 1,2,3,4). Nuclei of cardiomyocytes were irregularly shaped (Fig. 5,6). Capillary endothelial cells showed features of necrosis (Fig. 7). In some cardiomyocytes contractile apparatus disorganization was visible and this cells showed signs of cytolysis (Fig. 8).

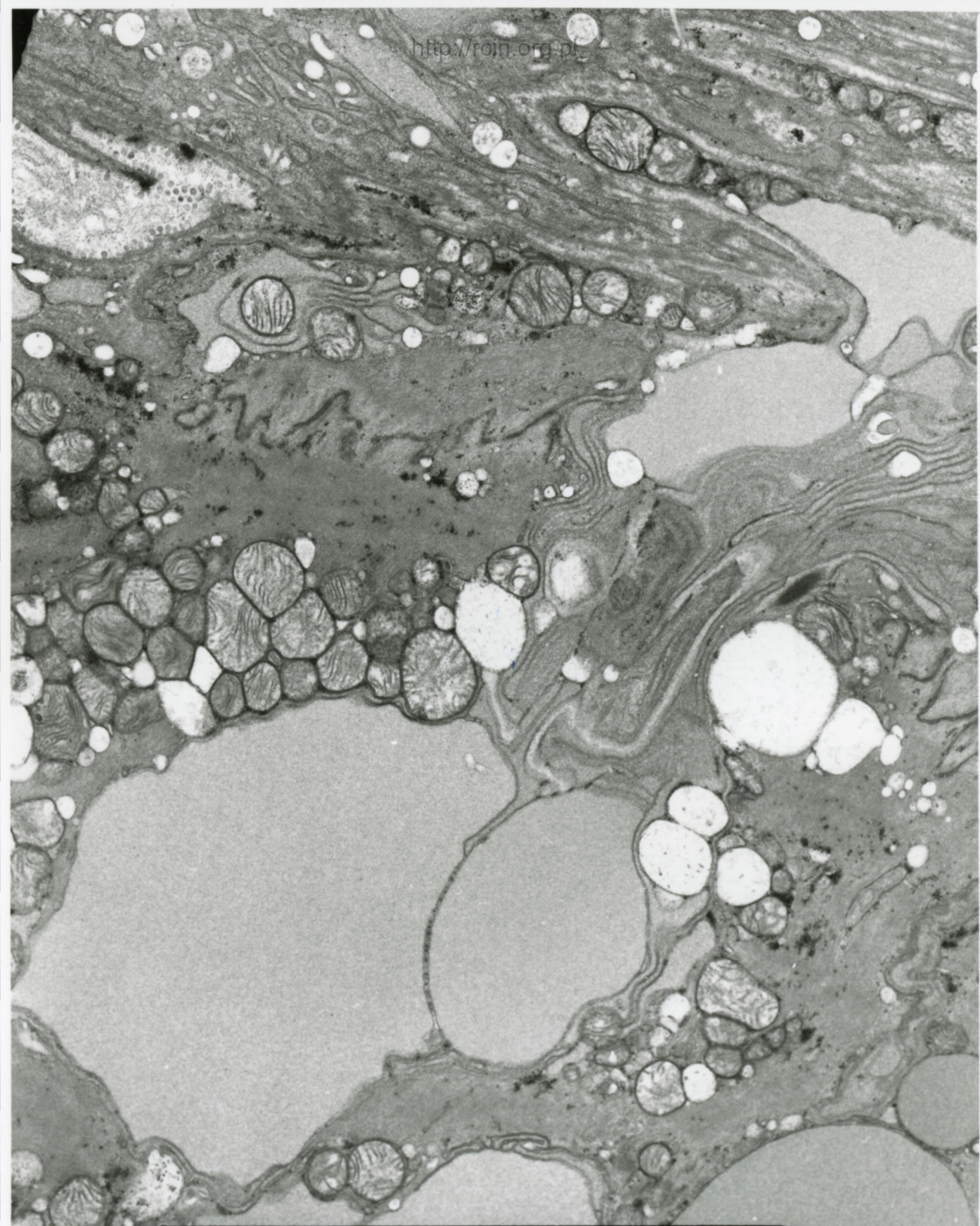


AF 73/88/SERCE
084042 80.0KV X4000



2µm

Fig. 1



AF 73/08/SERCS
090747 80.0KV X5000

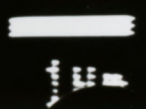
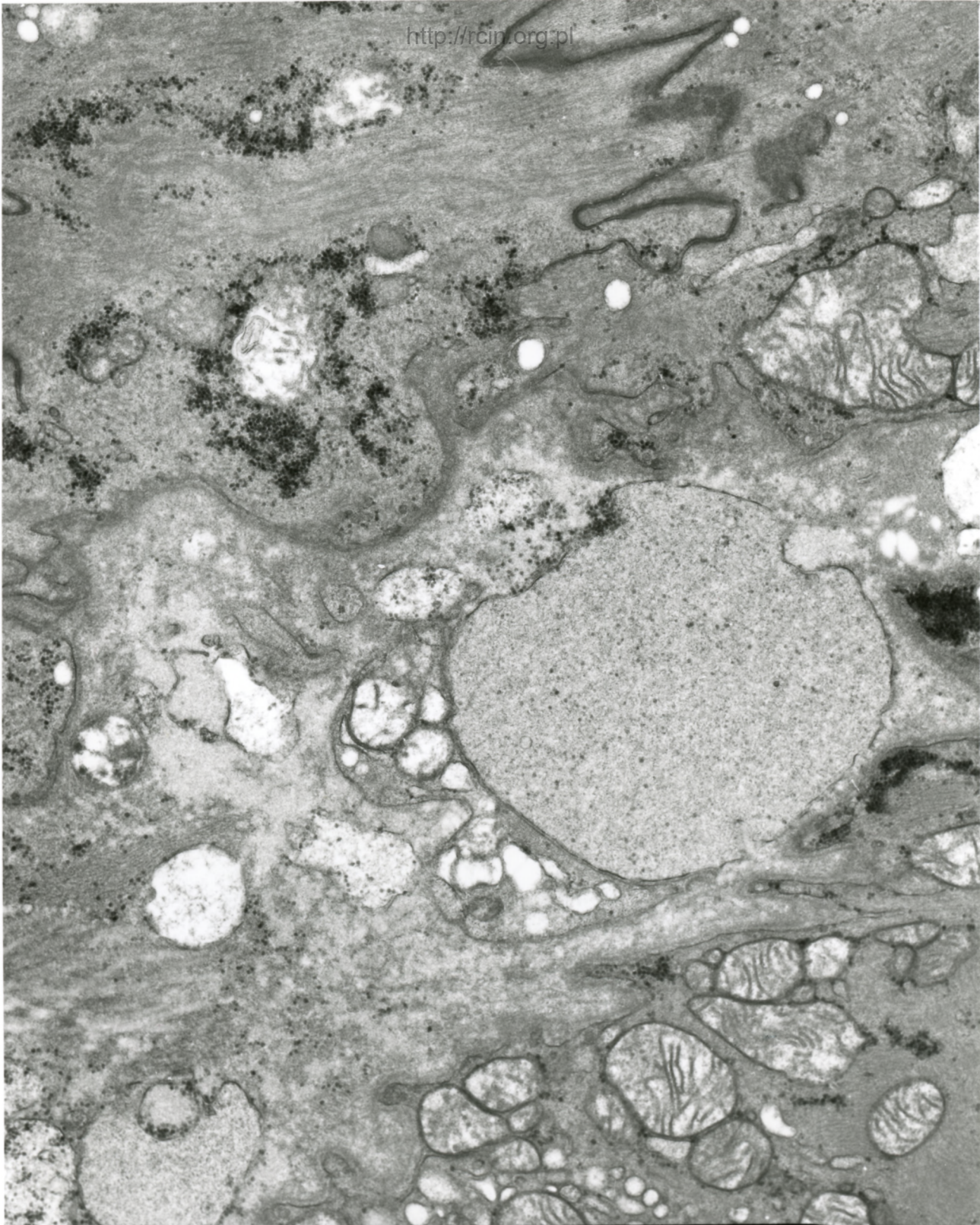


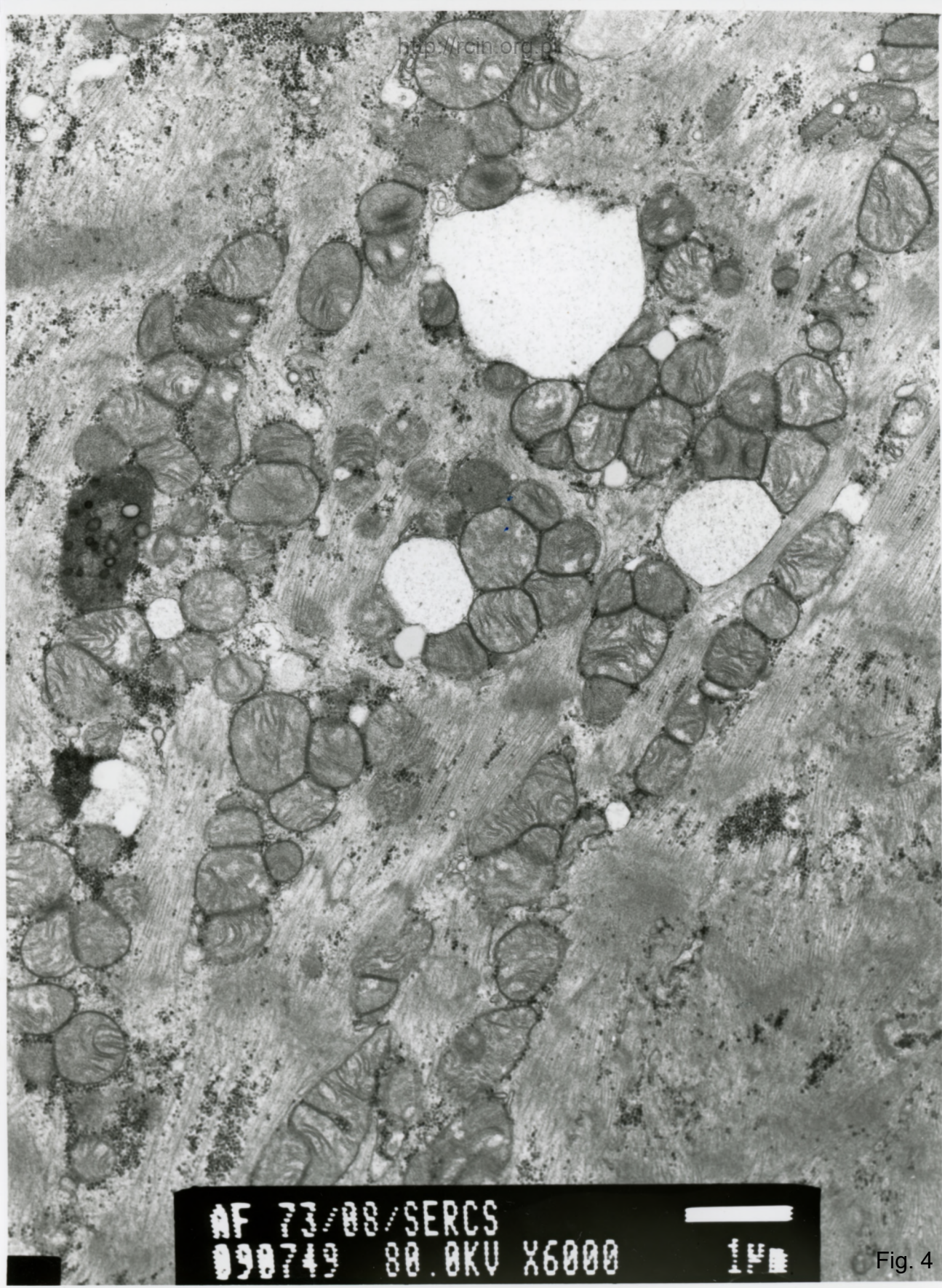
Fig. 2



AF 73/08/SERCS
090745 80.0KV X7500



Fig. 3



AF 73/88/SERCS
090749 80.0KV X6000

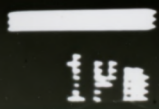


Fig. 4

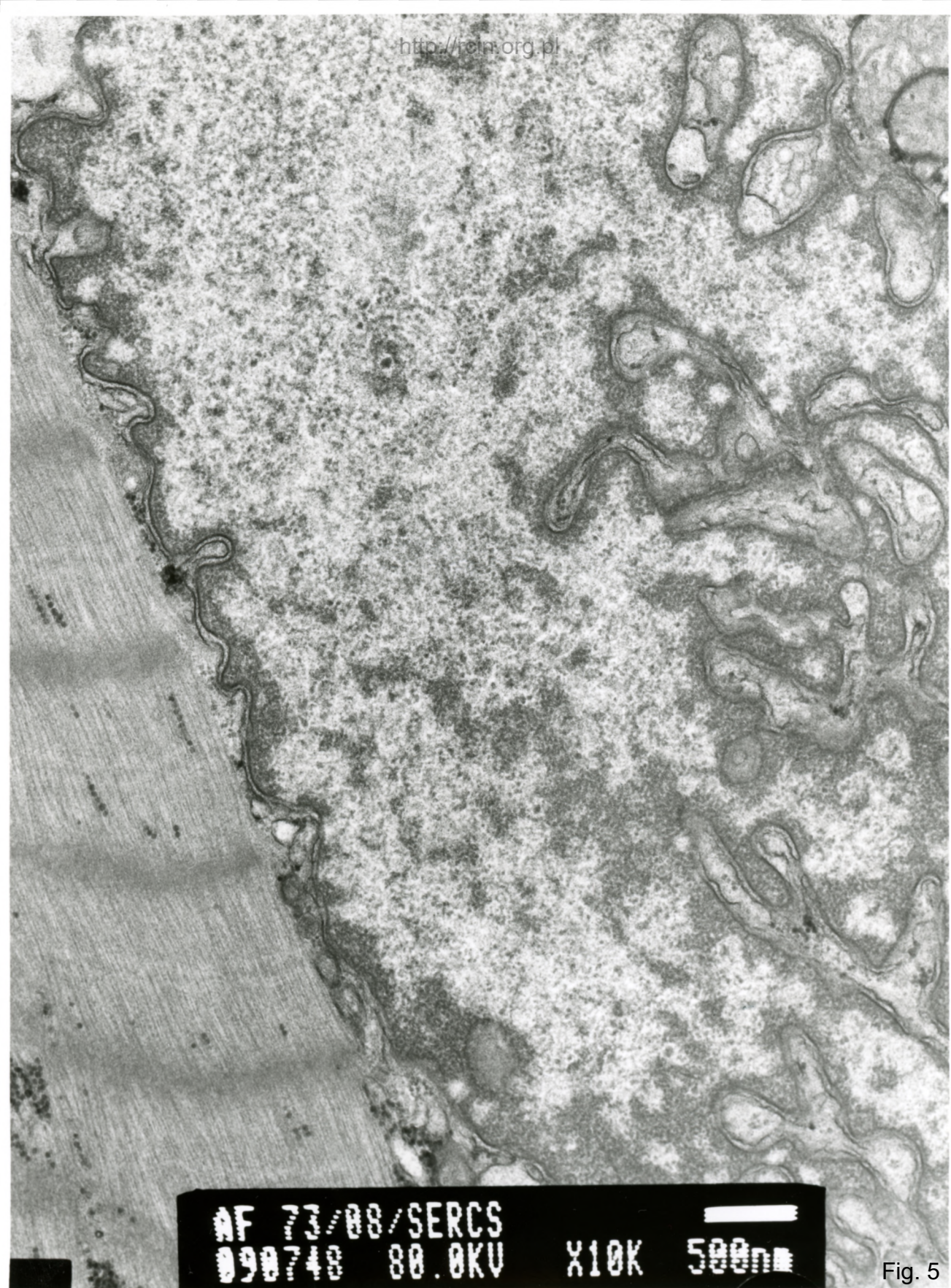
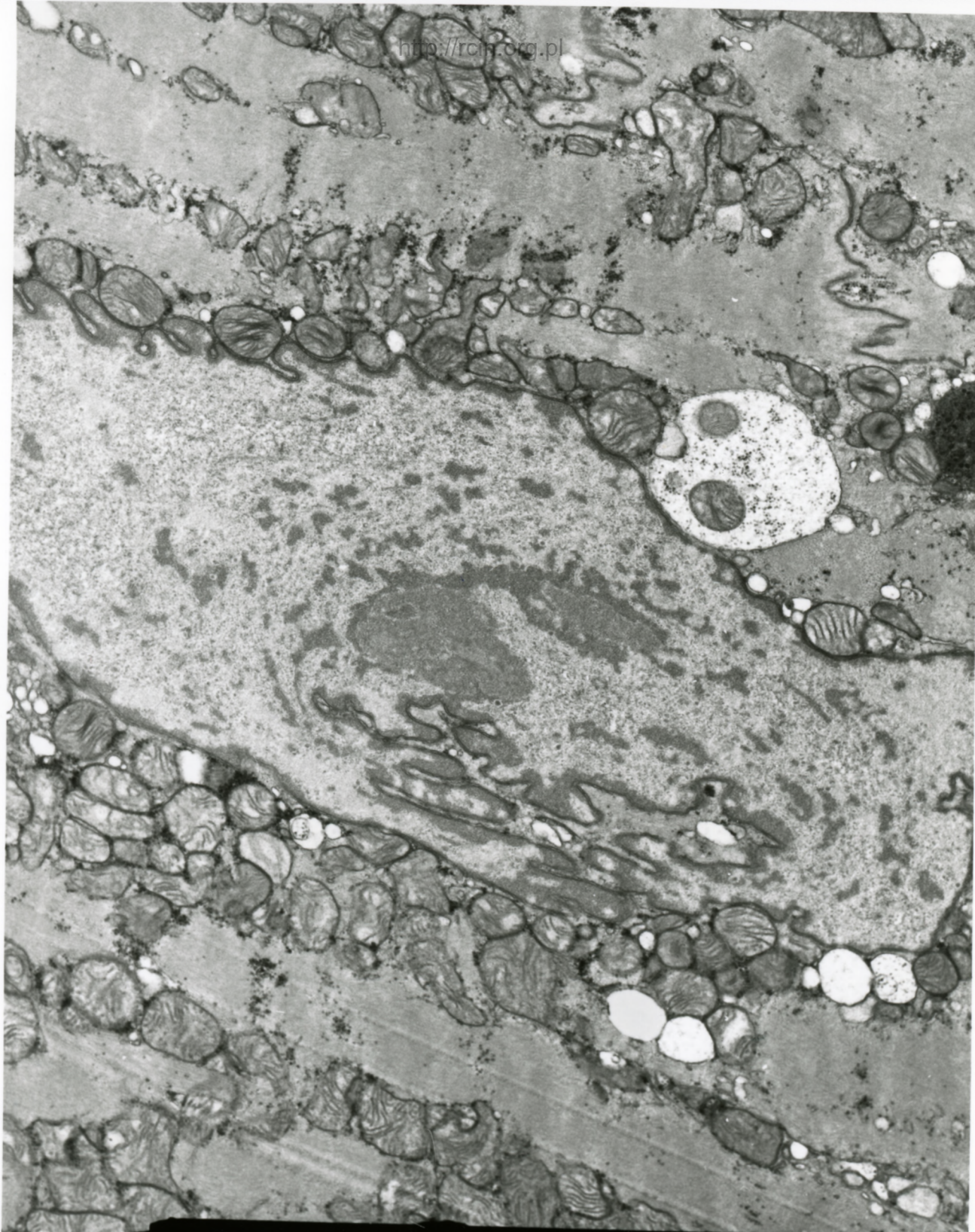


Fig. 5

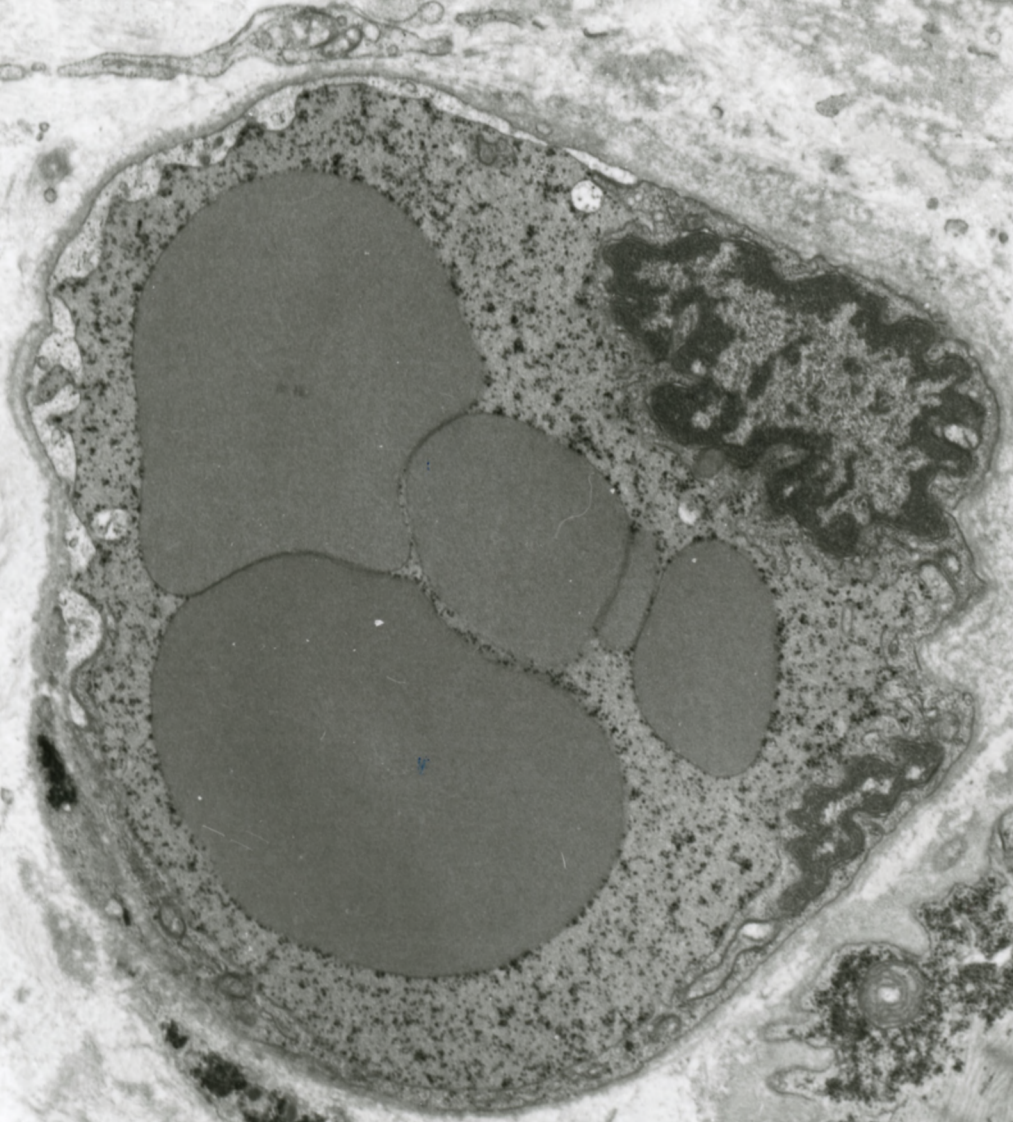


AF 73/88/SERCS
090742 80.0KV X5000



1 μm

Fig. 6



AF 73/08/SERCE
004038 80.0KV X5000

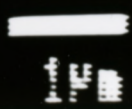
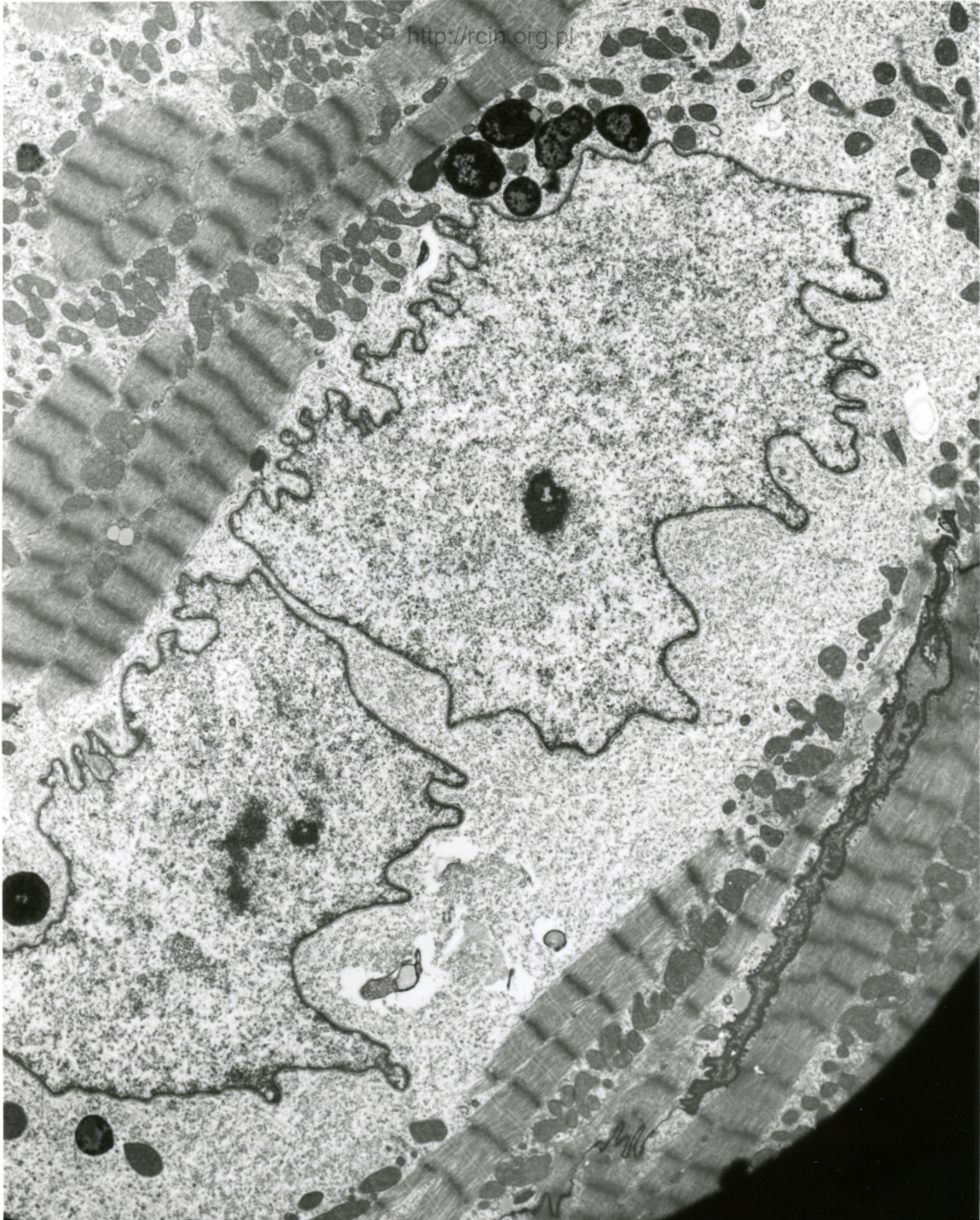


Fig. 7



AF 73/08/SERCS
090744 80.0KV X2500

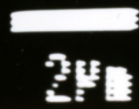


Fig. 8