

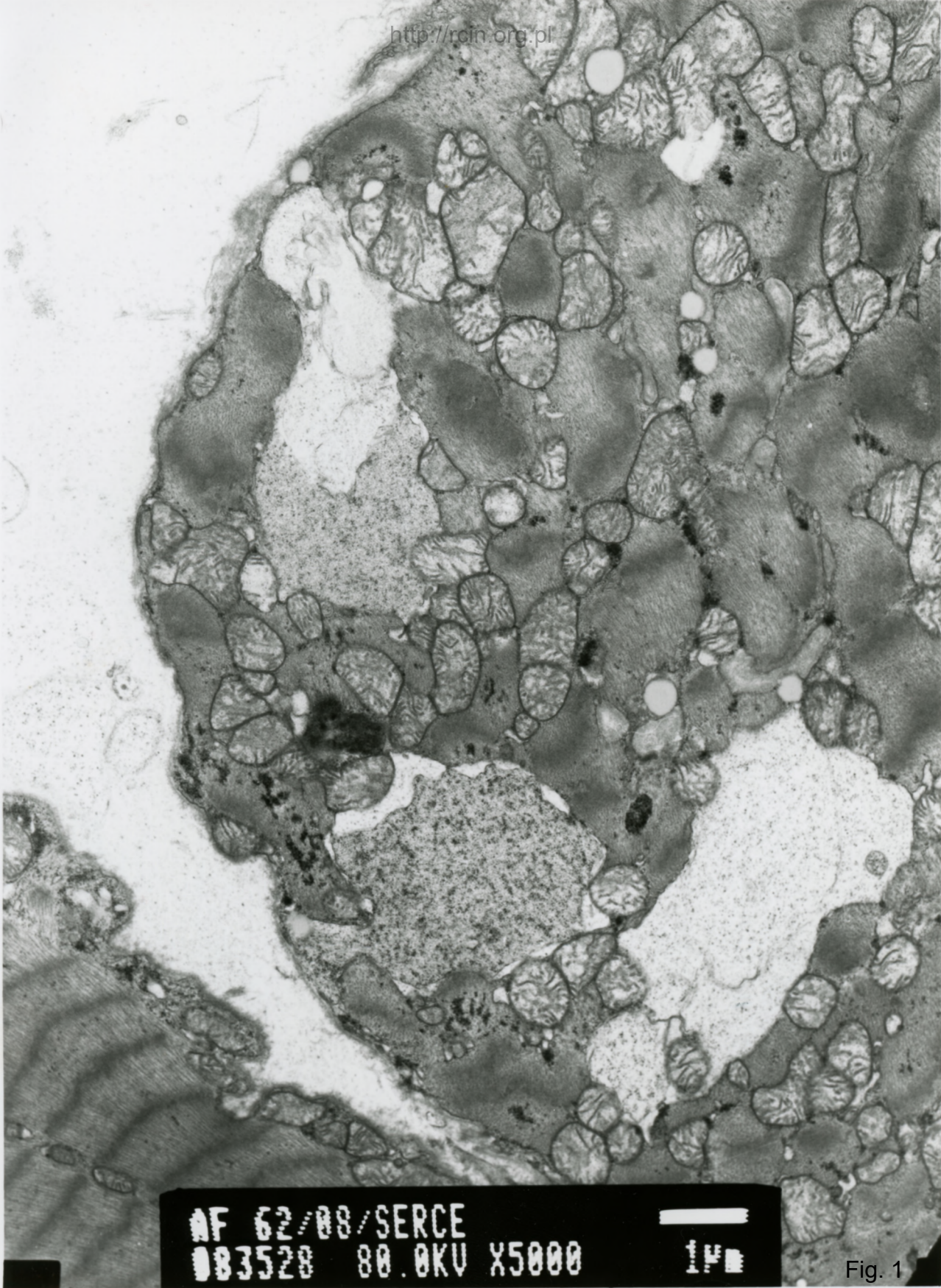
62/08

Niewydolność serca

Analiza ultrastrukturalna wykazała liczne zmiany w kardiomiocytach. Układ sarkomerów był zaburzony, a w cytoplazmie komórek obserwowano silnie poszerzone retikulum endoplazmatyczne (Fig. 1, 2,3,4,5). Mitochondria wykazywały cechy obrzęku (Fig. 6).

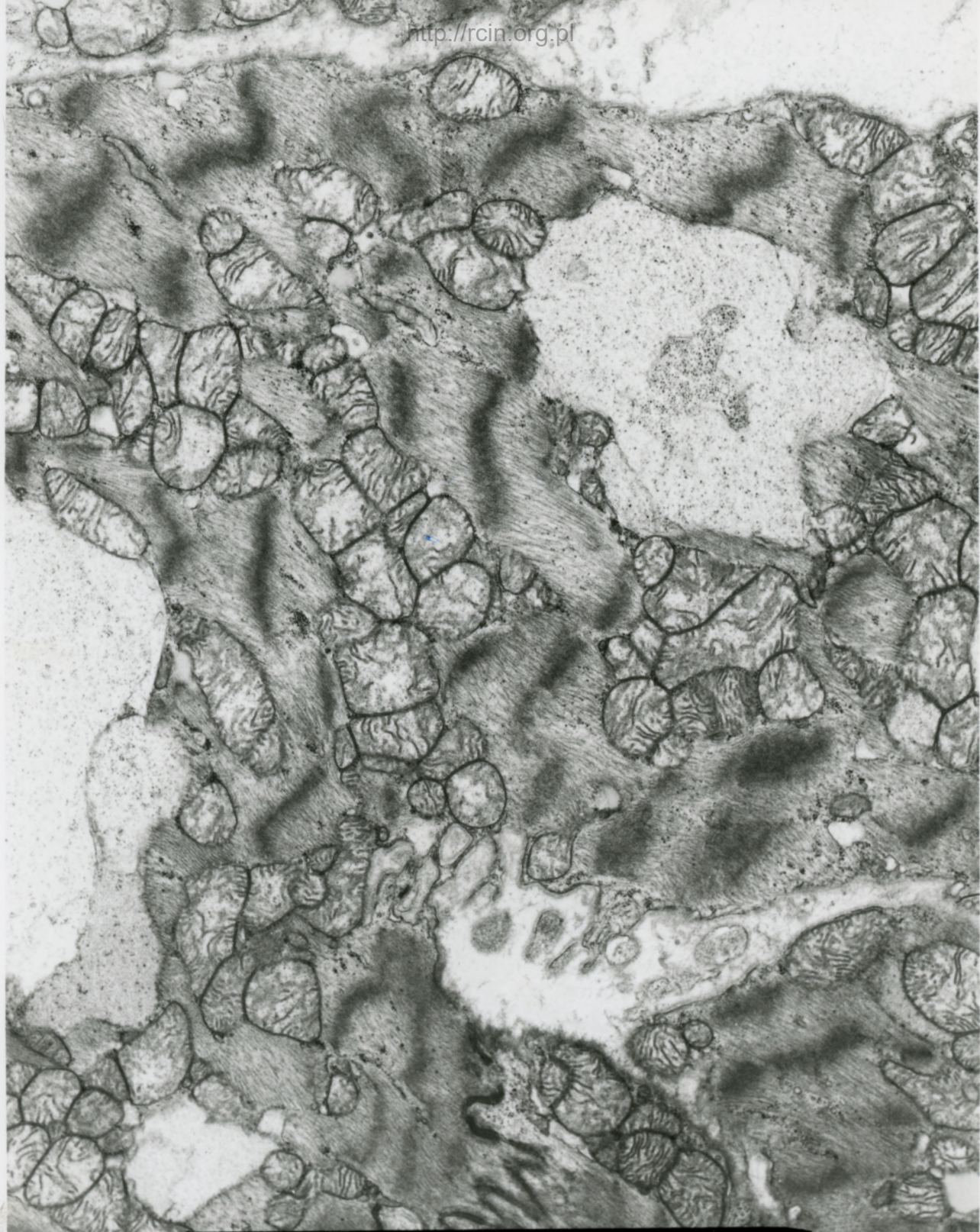
Heart failure

Ultrastructural analysis revealed numerous pathological changes within cardiomyocytes. In many cells sarcomere pattern was altered and significant sarcoplasmic reticulum dilation was observed (Fig. 1, 2,3,4,5). Mitochondria were swollen (Fig. 6).



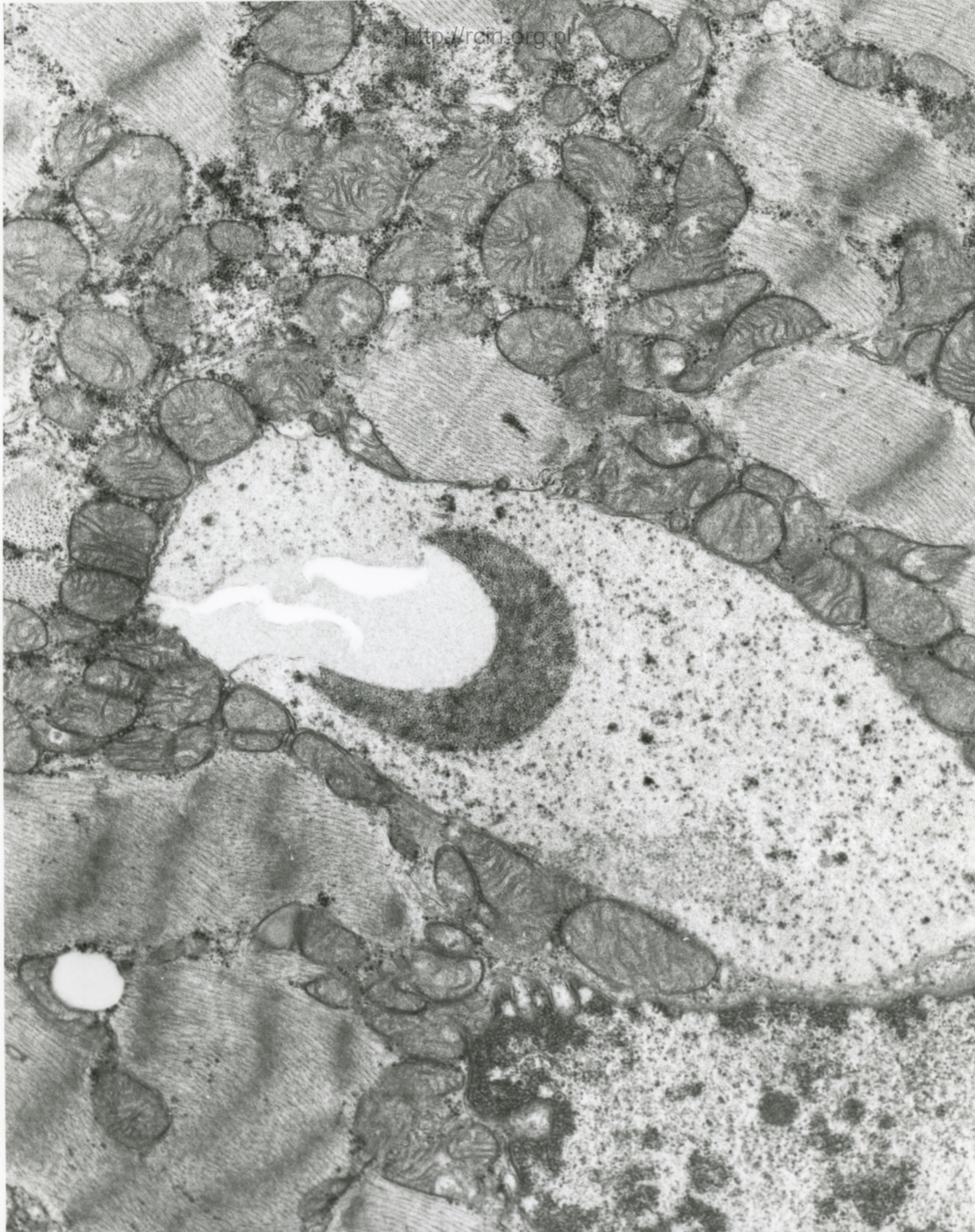
AF 62/88/SERCE
083528 80.0KV X5000 1µm

Fig. 1



MF 62/88/SERCE
083529 80.0KV X5000 14

Fig. 2



AF 62/88/SERCE
083532 80.0KV X7500

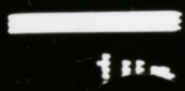
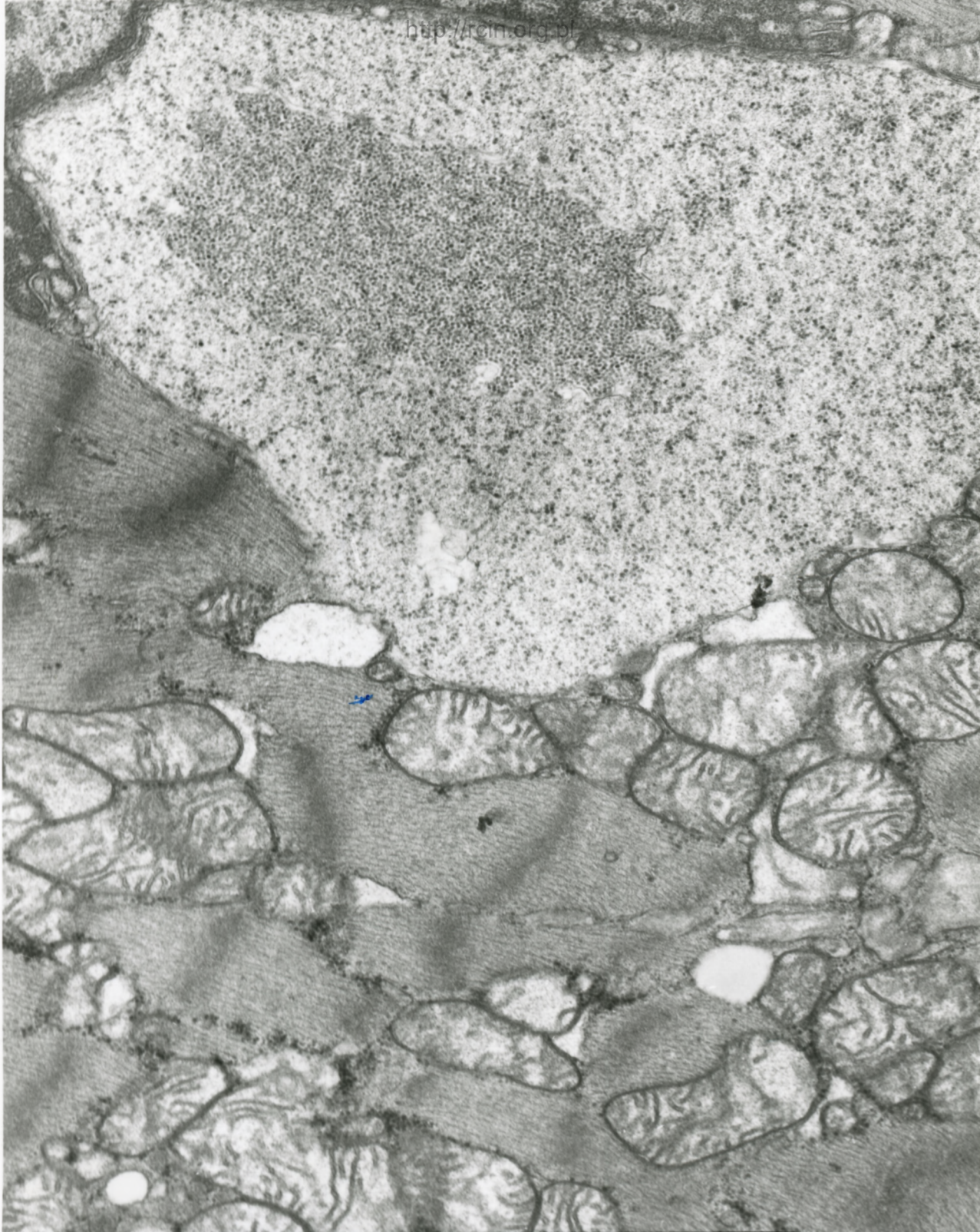
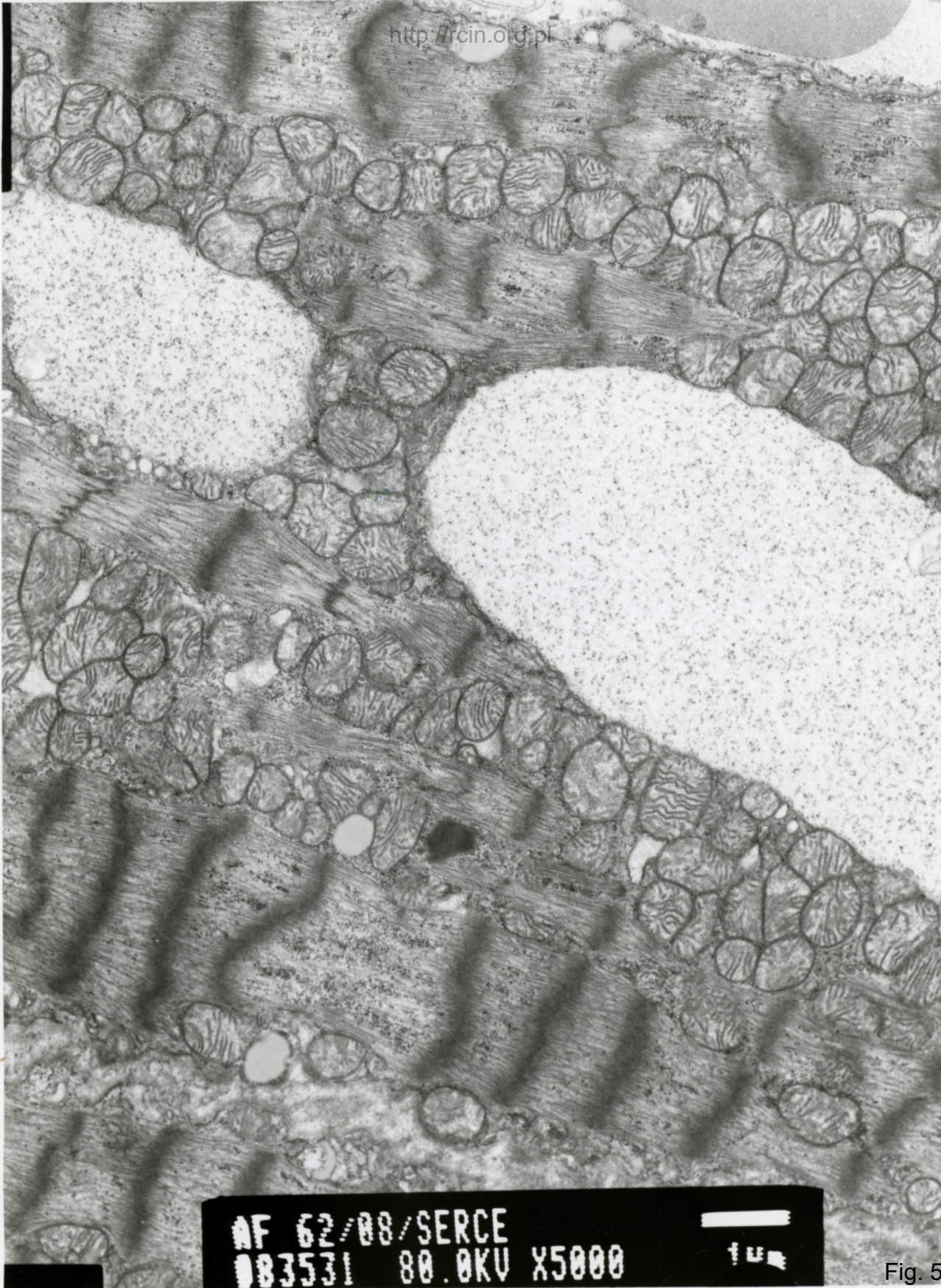


Fig. 3

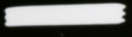


AF 62/08/SERCE
083530 80.0KV X10K 500nm

Fig. 4

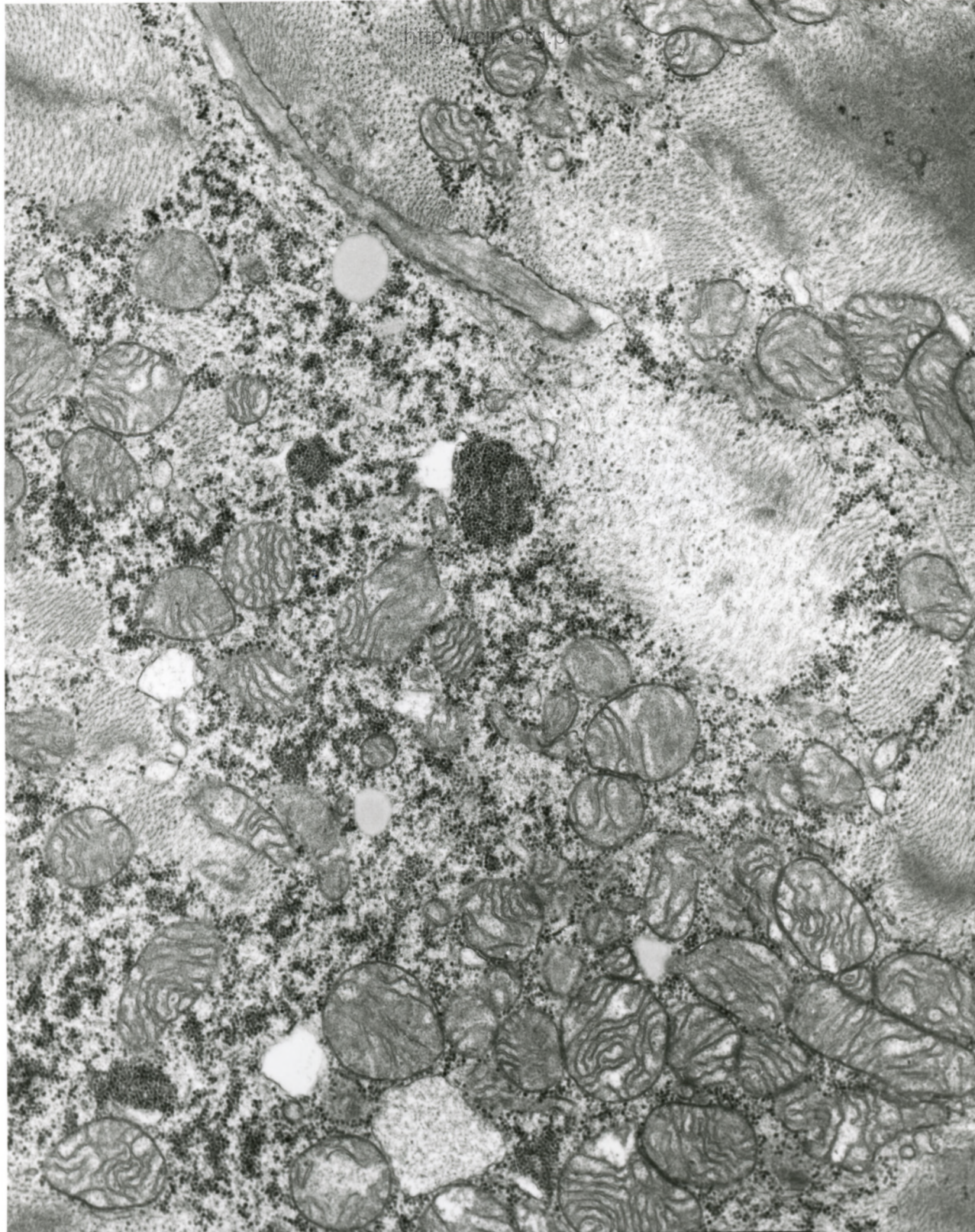


AF 62/88/SERCE
083531 80.0KV X5000

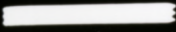


1 μm

Fig. 5



AF 62/88/SERCE
083533 80.0KV X7500



1µm

Fig. 6