

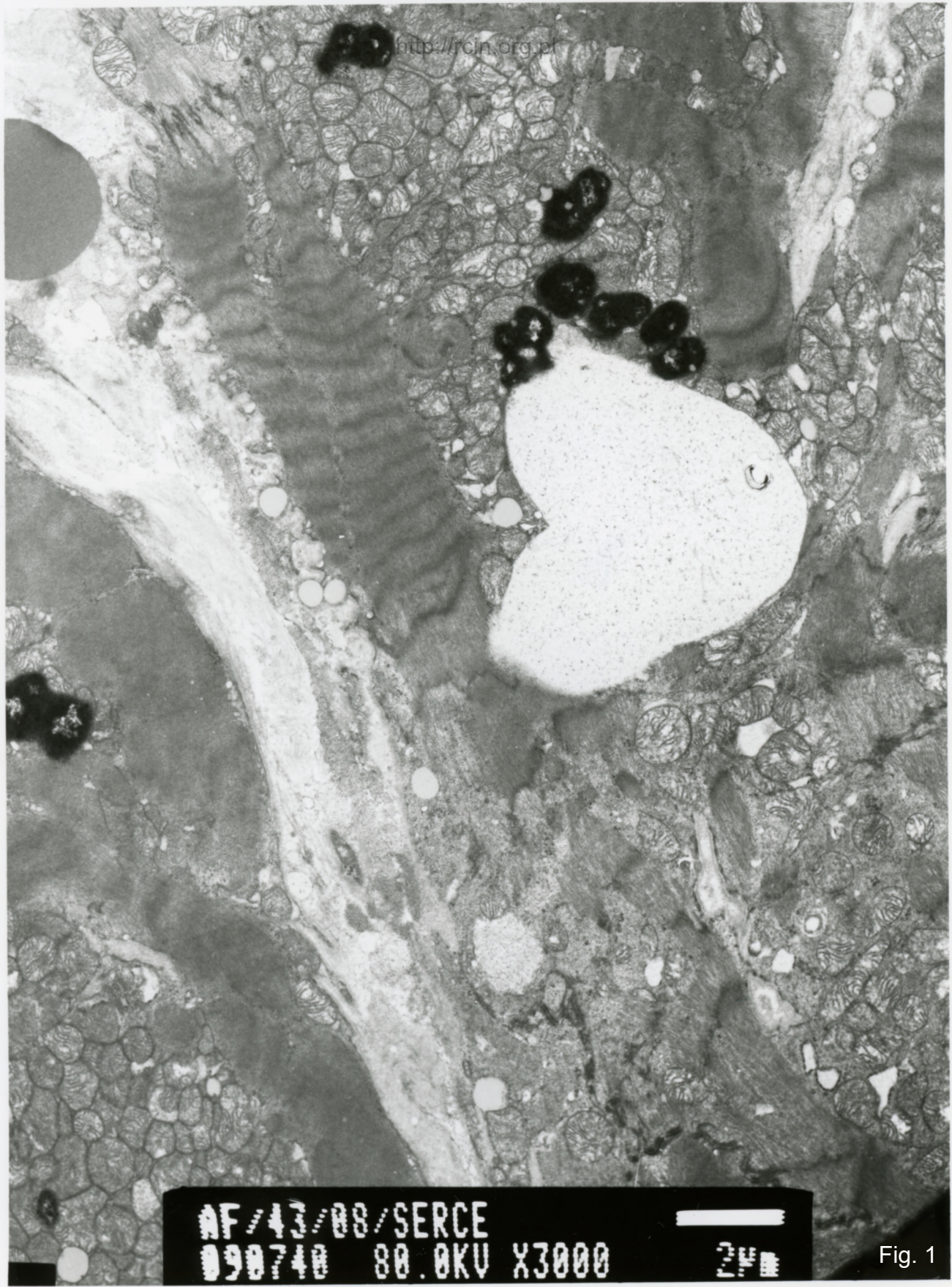
43/08

Niewydolność mięśnia sercowego

Analiza ultrastrukturalna wykazała zmiany w kardiomiocytach. W licznych komórkach obserwowano zmiany w strukturze sarkomerów. Miofibrylle charakteryzowały się nieregularnym przebiegiem. Cytoplazmę kardiomiocytów wypełniały licznie mitochondria i struktury wakuolarne (Fig. 1,2,3). W niektórych kardiomiocytach obecne były wakuole autofagalne (Fig. 4). Niektóre kardiomiocyty wykazywały cechy cytolizy (Fig. 5). Jądra kardiomiocytów charakteryzowały się nieregularnym kształtem (Fig. 5,6,7).

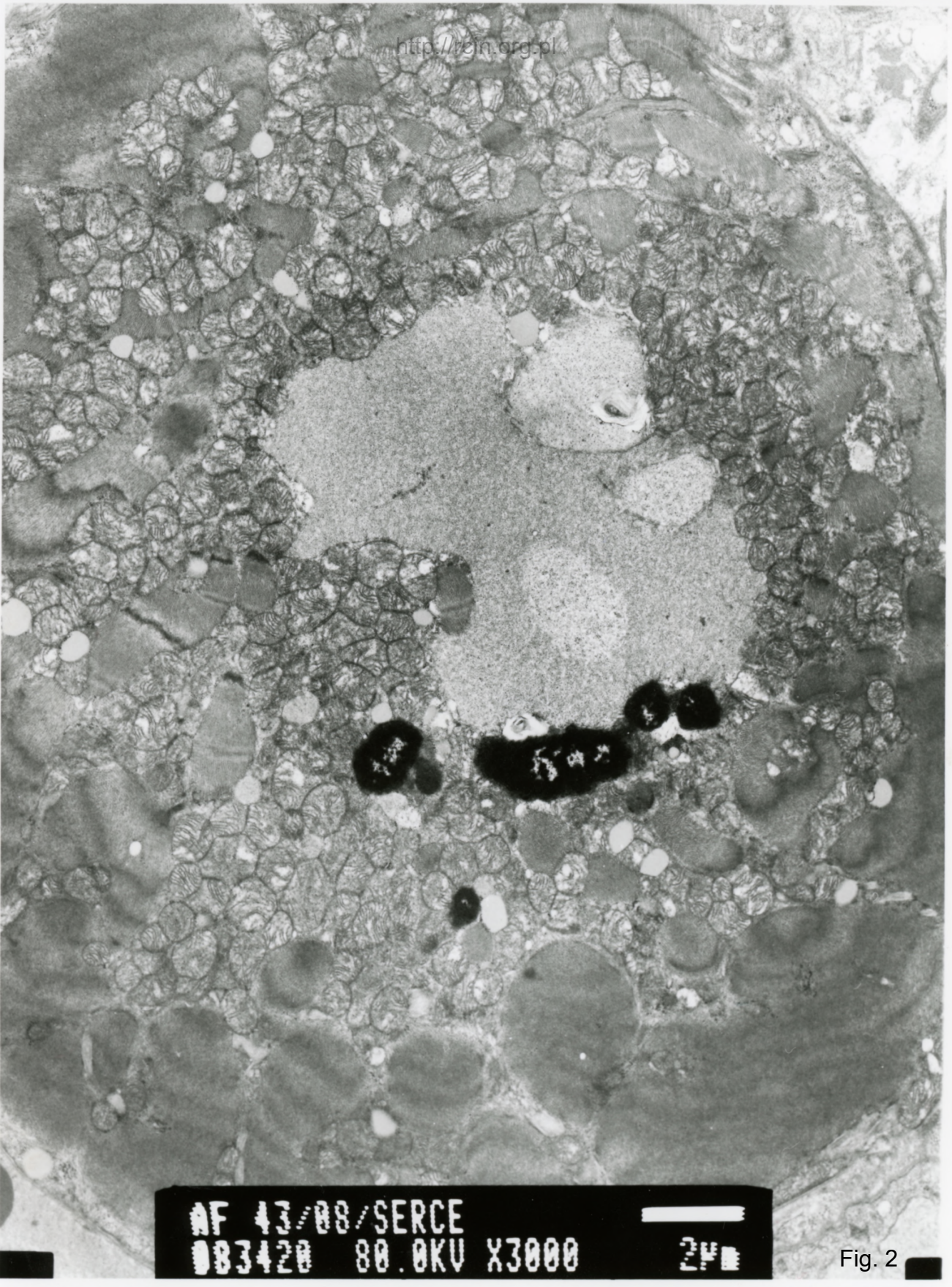
Heart failure

Ultrastructural analysis revealed changes in morphology of cardiomyocytes. In many cells sarcomere pattern was altered and myofibrils were disorganized. Numerous mitochondria and vacuolar structures were seen in the cardiomyocytes cytoplasm (Figs. 1,2,3). Autophagous vacuoles (Fig. 4) and features of cytolysis were observed in some cardiomyocytes (Fig. 5). Cardiomyocytes nuclei were irregularly shaped (Figs. 5,6,7).



AF/43/88/SERCE
090740 80.0KV X3000 2µm

Fig. 1

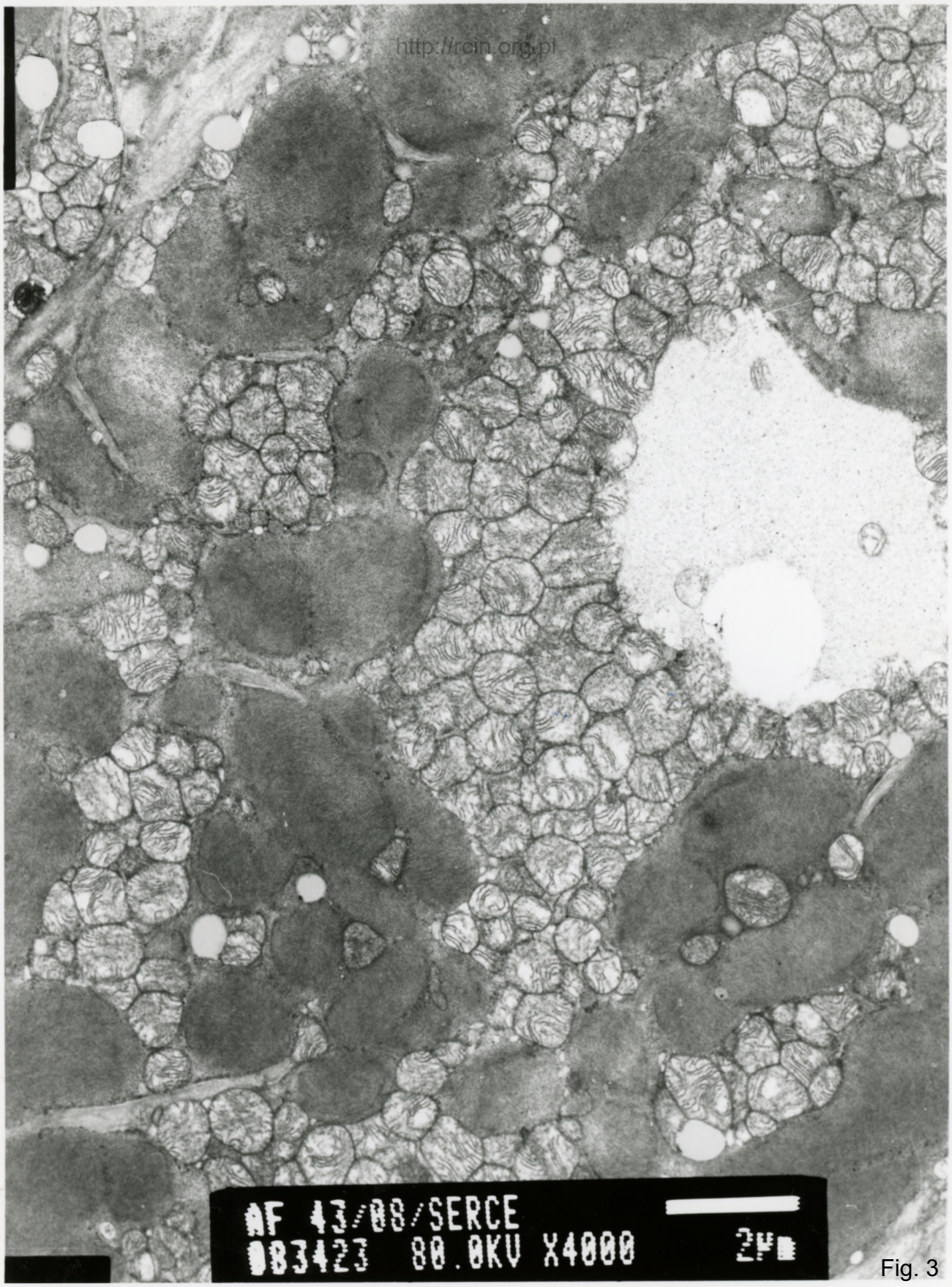


AF 43/88/SERCE

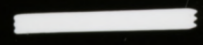
083420 80.0KV X3000

24

Fig. 2

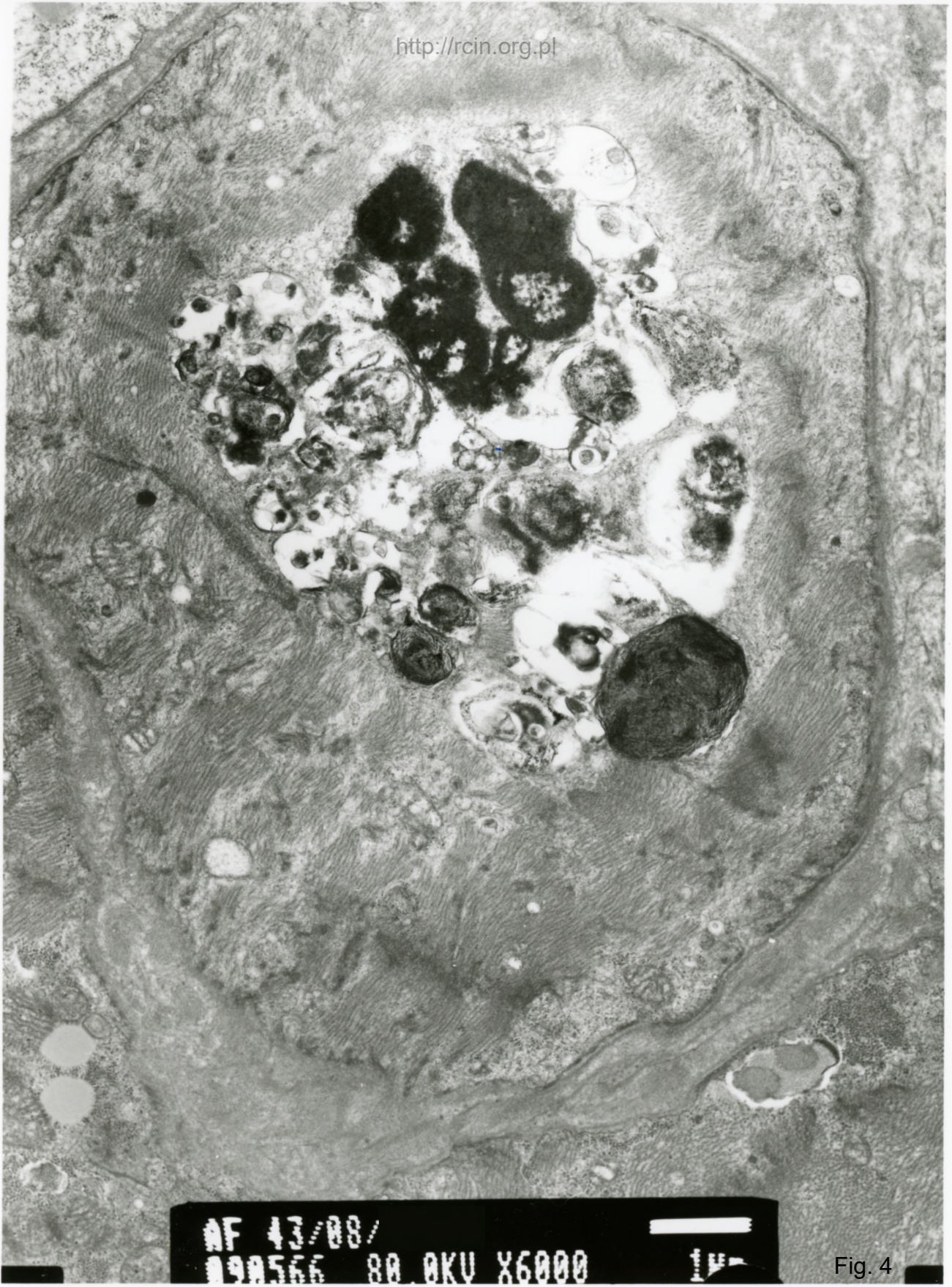


AF 43/08/SERCE
083423 80.0KV X4000



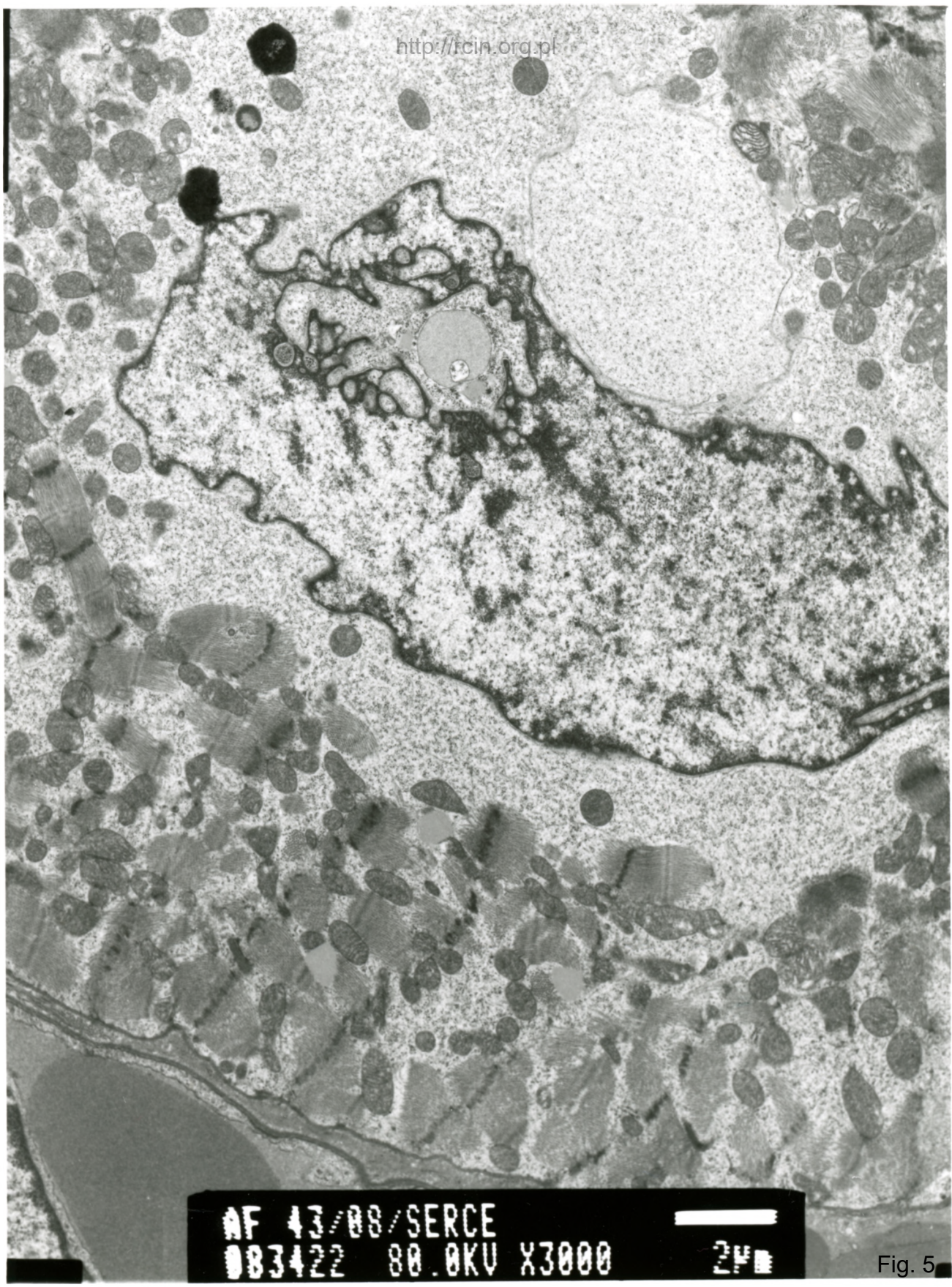
2µm

Fig. 3



AF 43/88/
090566 80.0KV X6000 14

Fig. 4



AF 43/08/SERCE
083422 80.0KV X3000

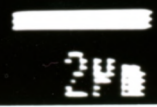
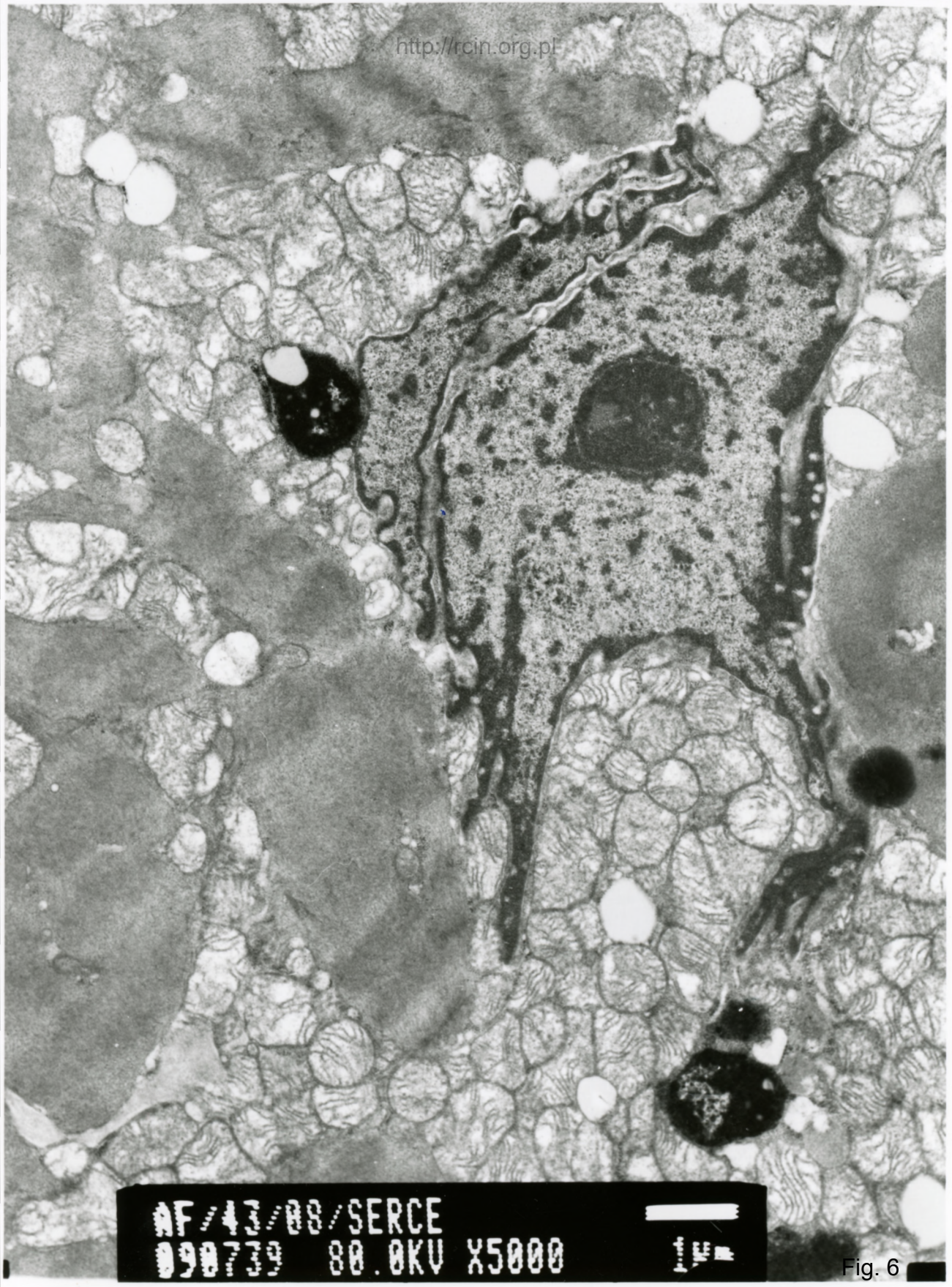


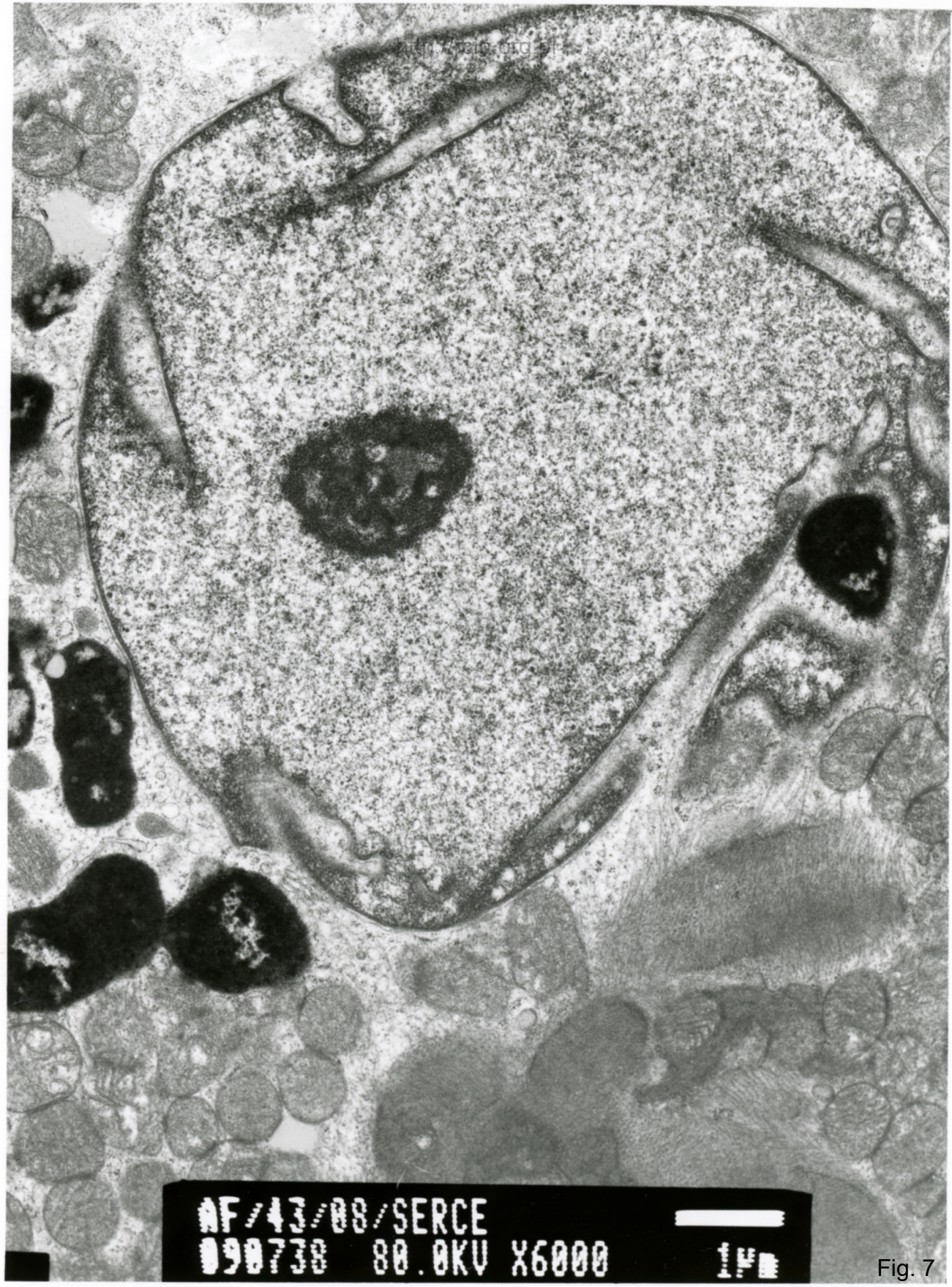
Fig. 5



AF/43/88/SERCE
090739 80.0KV X5000



Fig. 6



AF/43/88/SERCE
090738 80.0KV X6000

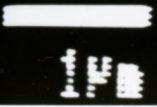


Fig. 7