

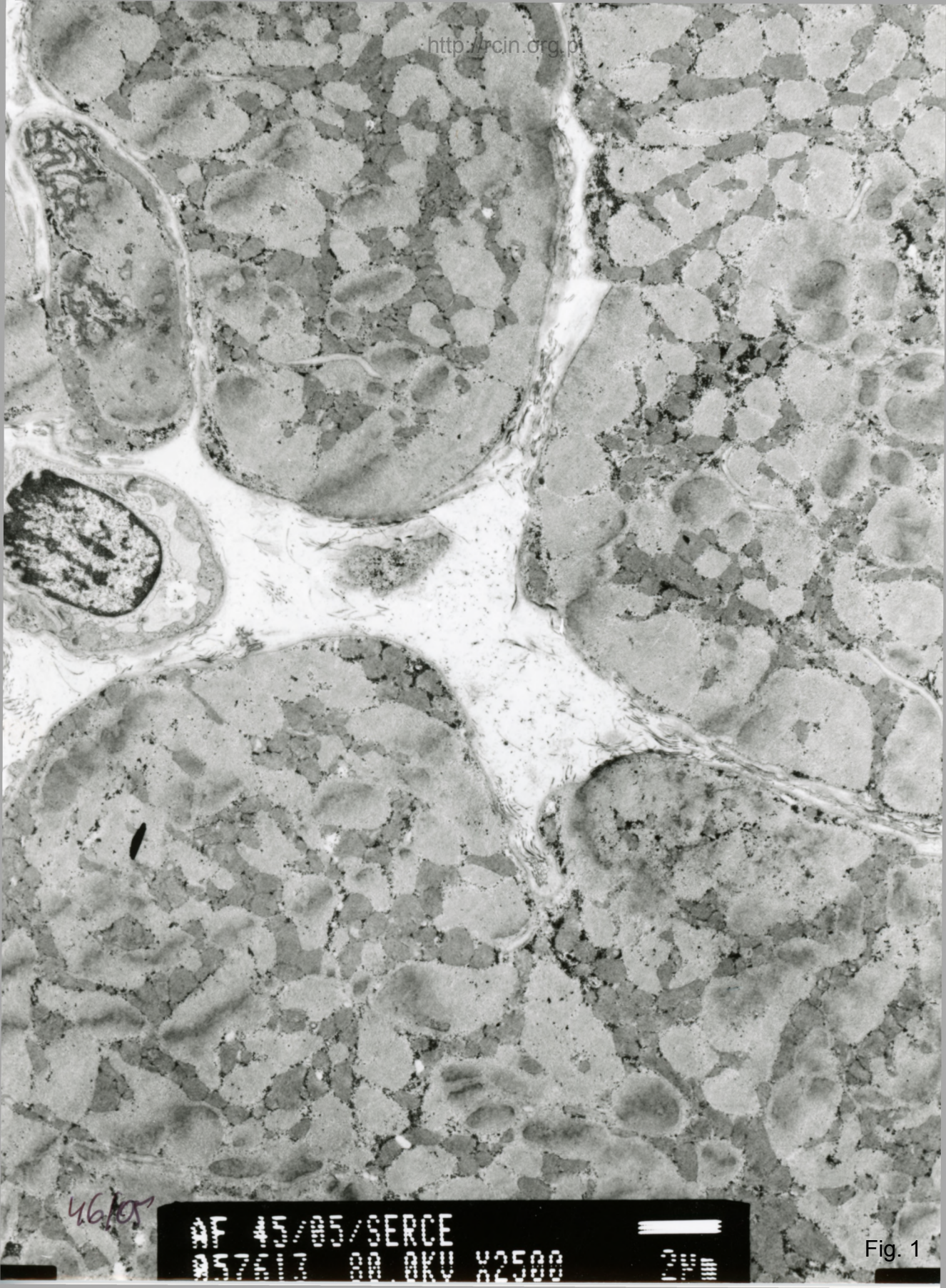
## Podjęcie kardiomiopatii amyloidowej

46/05

W ocenie ultrastrukturalnej stwierdza się kardiomiocyty nie wykazujące większych zmian w budowie morfologicznej (Fig.1,2). Większość komórek wykazuje jednak szereg nieprawidłowości. Obserwuje się dezorganizację miofilamentów oraz licznie występujące wakuole autofagalne (Fig. 3-9). W niektórych kardiomiocytach widoczne zmienione ultrastrukturalnie jądra komórkowe charakteryzujące się przerwaniem ciągłości otoczki jądrowej (Fig. 10). Obserwuje się też nieprawidłowe mitochondria olbrzymie, wielokrotnie większe od typowych (Fig.11-14). Miejscowo widoczne skupiska ziaren glikogenu (Fig. 15,16). Występowały licznie lizosomy (Fig. 17,18,19).

## Suspected amyloid cardiomyopathy

Electronmicroscopy analyses revealed cardiomyocytes that did not show any major changes in ultrastructure (Figs. 1,2). However, most cells showed a number of abnormalities. Disorganization of myofilaments and numerous autophagous vacuoles were observed (Figs. 3-9). In some cardiomyocytes ultrastructurally altered cell nuclei characterized by breaks in the nuclear envelope were seen (Fig. 10). Giant mitochondria, many times larger than typical were visible (Figs.11-14). Focally, glycogen granules were observed (Figs. 15,16). Numerous lysosomes were seen in the biopsy (Figs. 17,18,19).

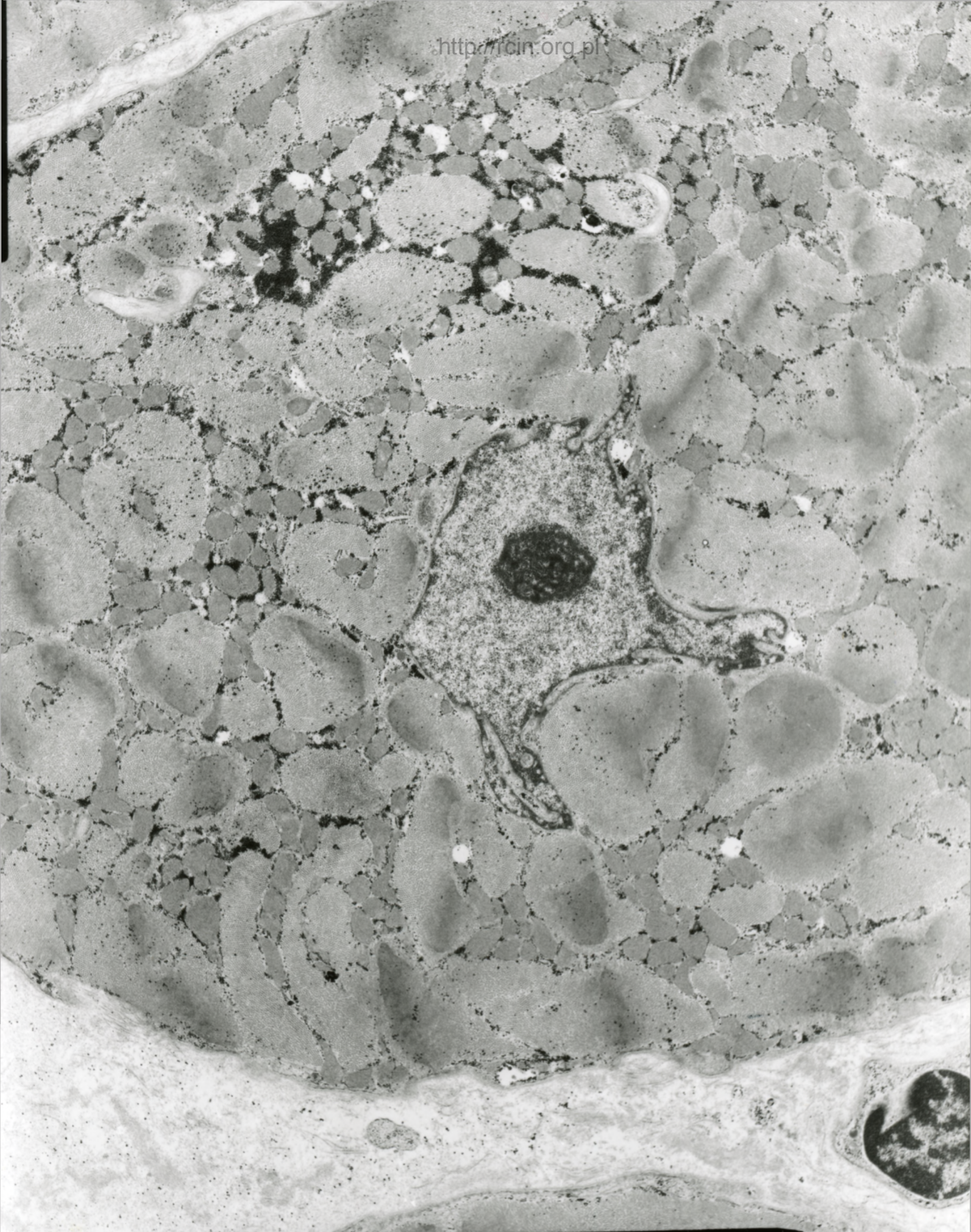


46/05

AF 45/05/SERCE  
057613 80.0KV X2500

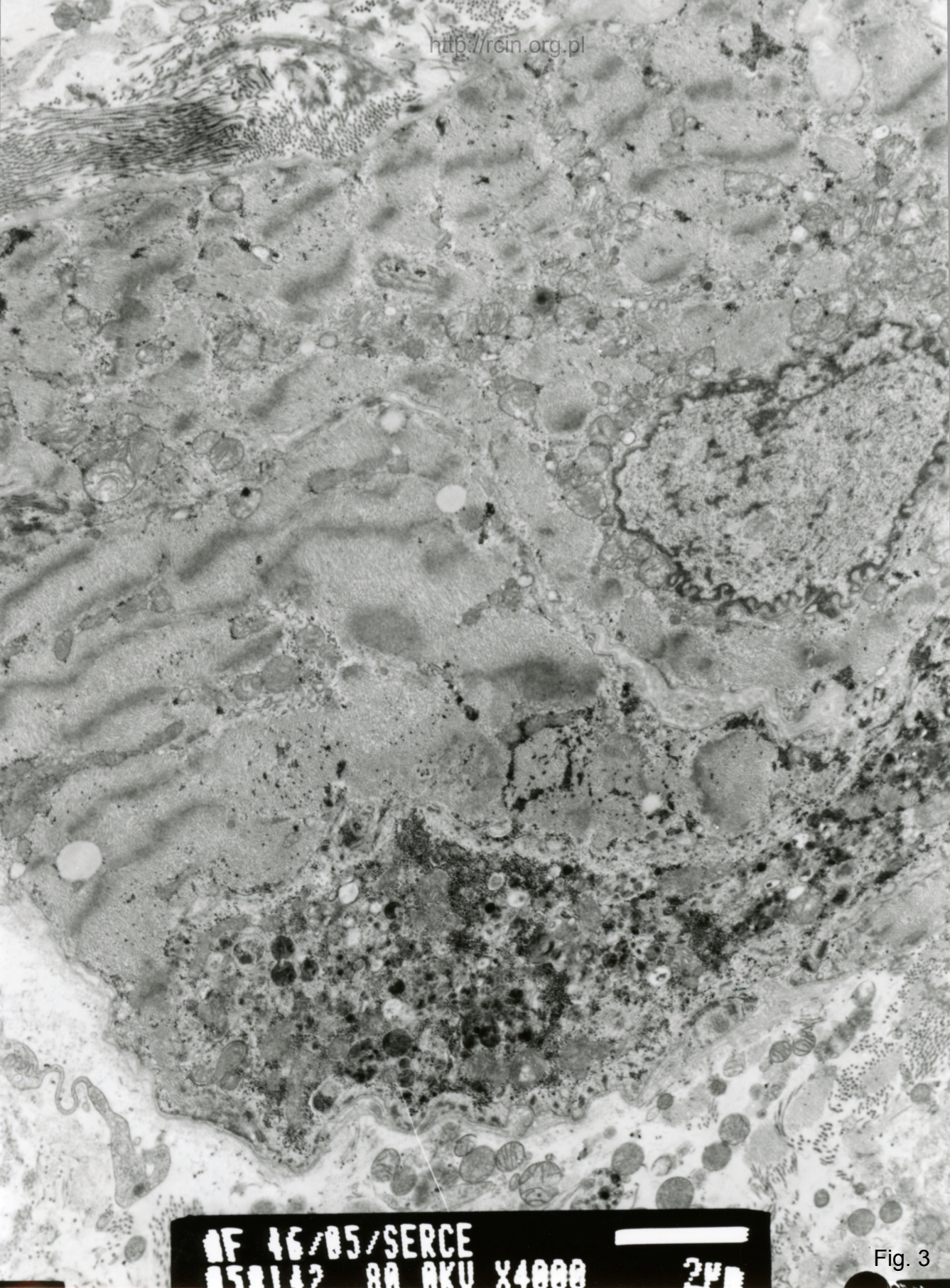


Fig. 1



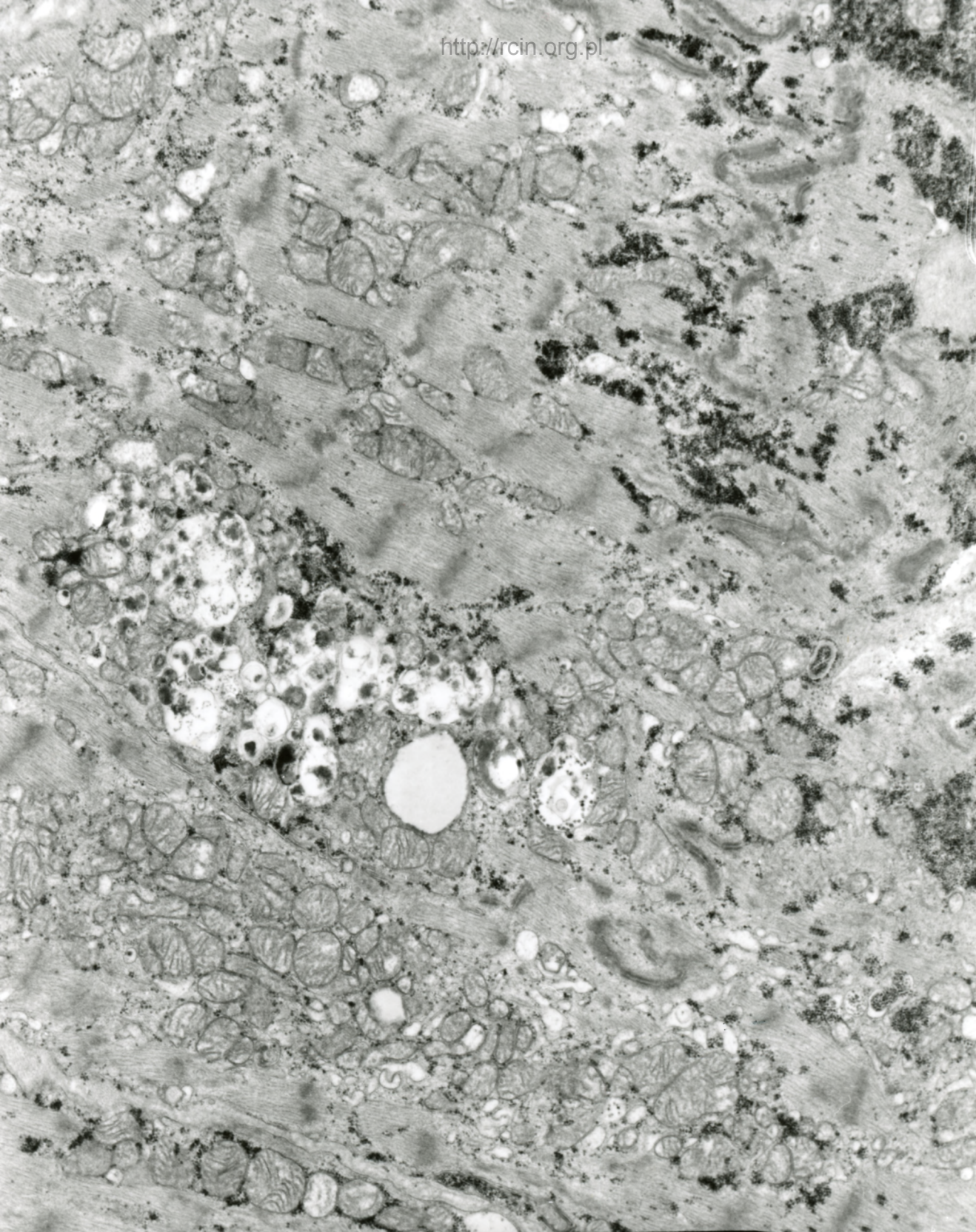
AF 46/85  
00777E AA AKU X3000

Fig. 2



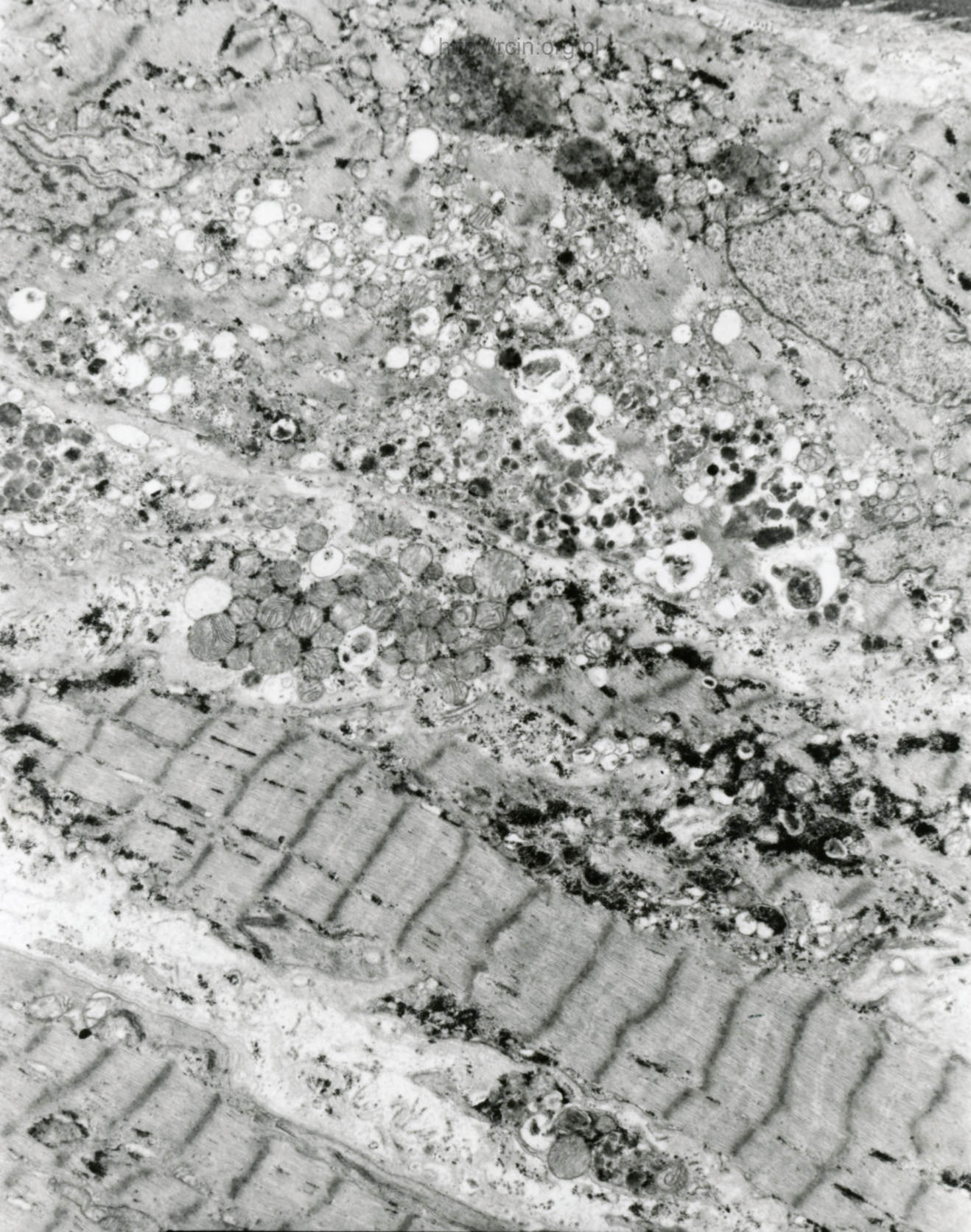
MF 46/85/SERCE  
058142 88 AKU X4000 2µm

Fig. 3



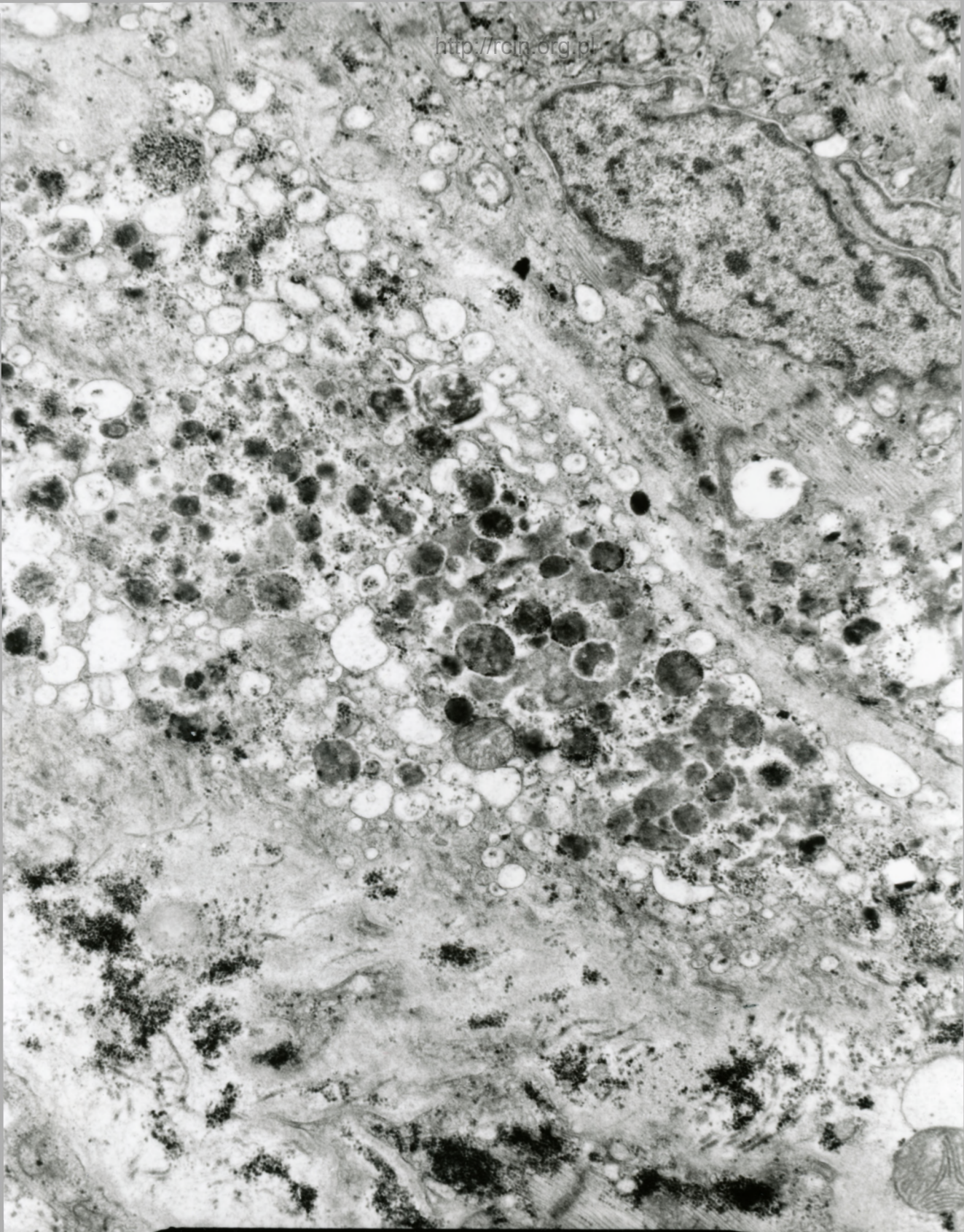
MF 46/05/SERCE  
050143 80.0KV X6000 1µm

Fig. 4

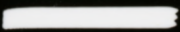


BF 46/85/SERCER  
050330 80.0KV X4000 2µm

Fig.5

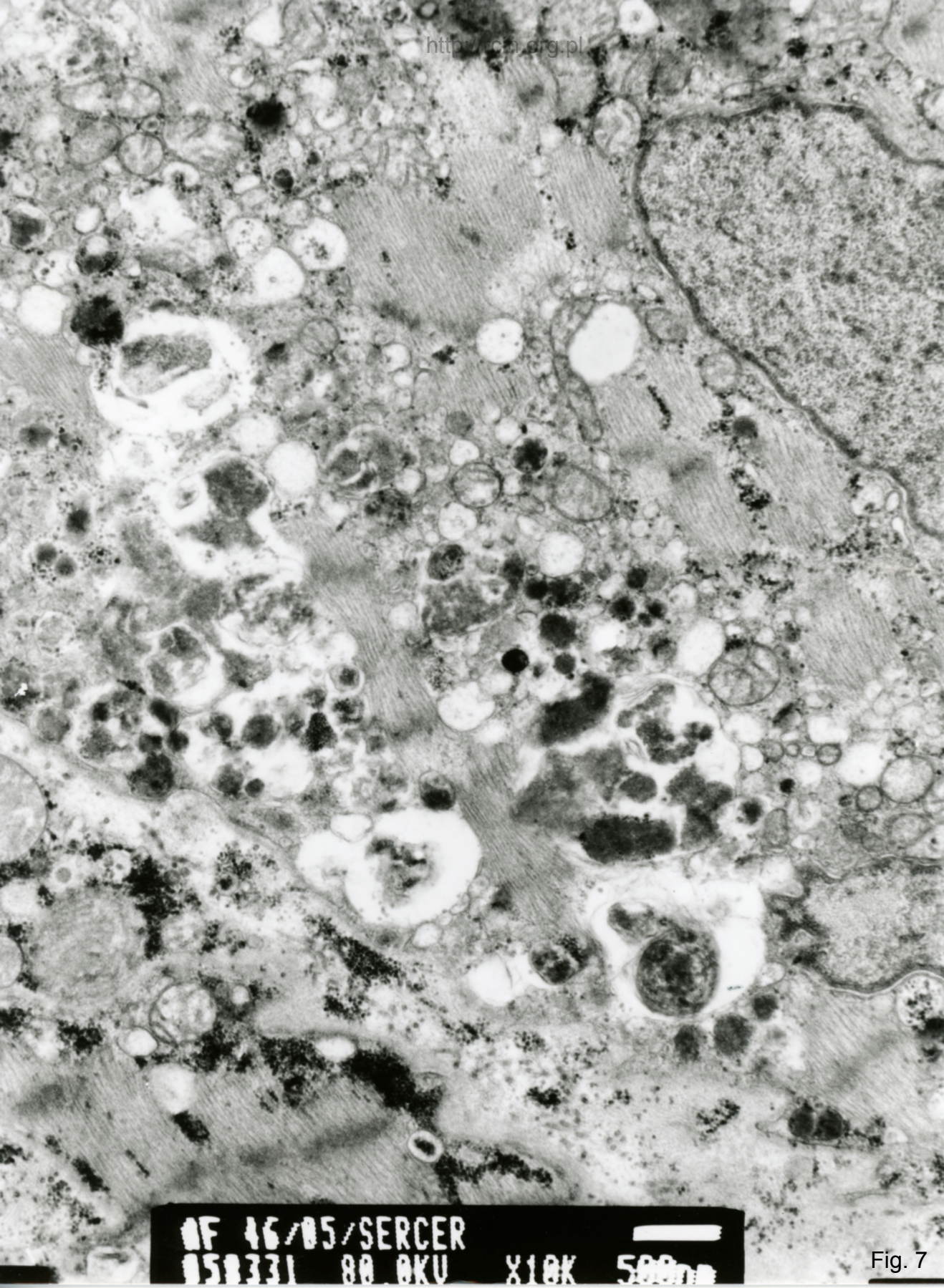


AF 46/05/SERCER  
050332 80 OKU X7500



1 μm

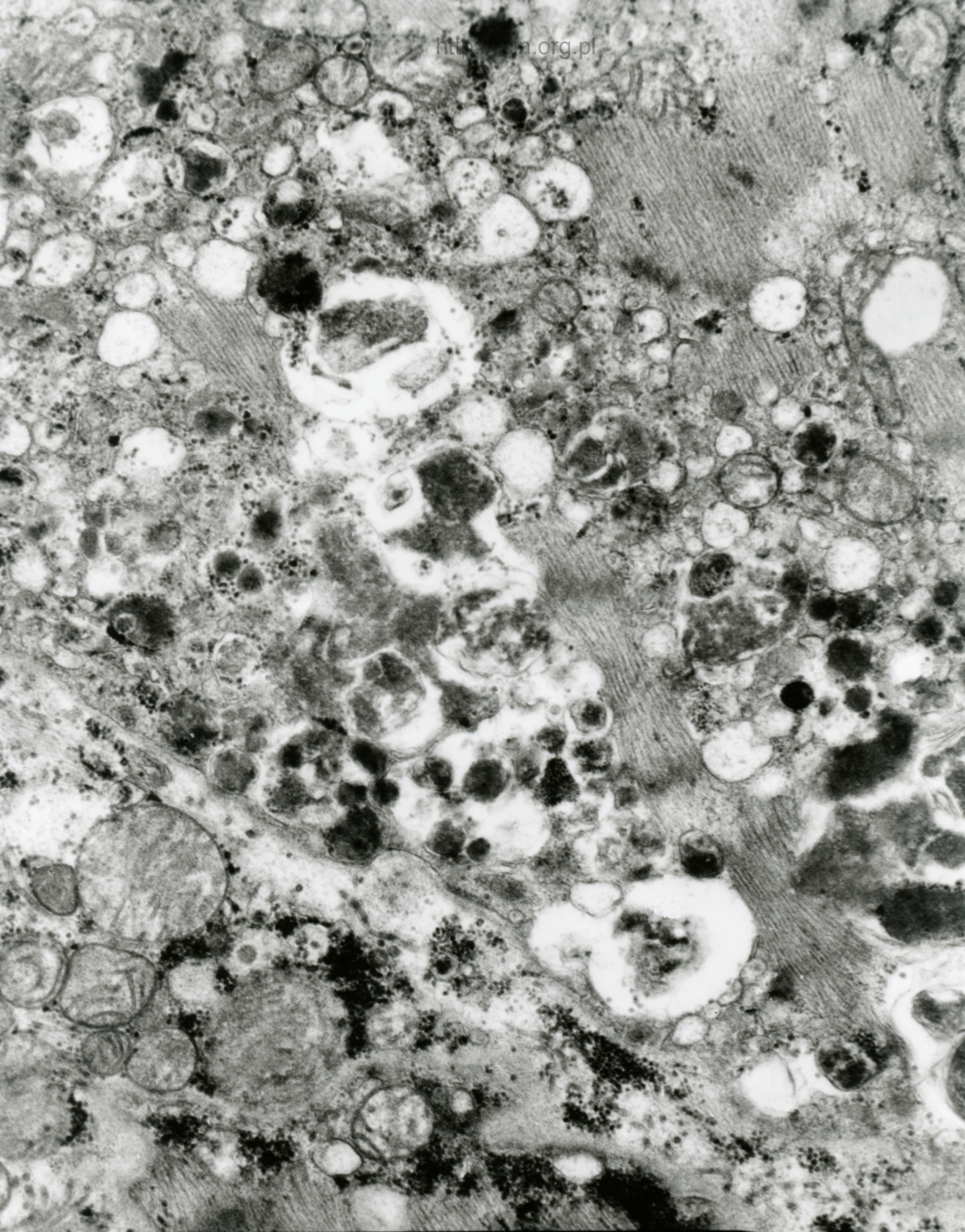
Fig. 6



MF 46/05/SERCER  
058331 80 OKU X10K 500nm

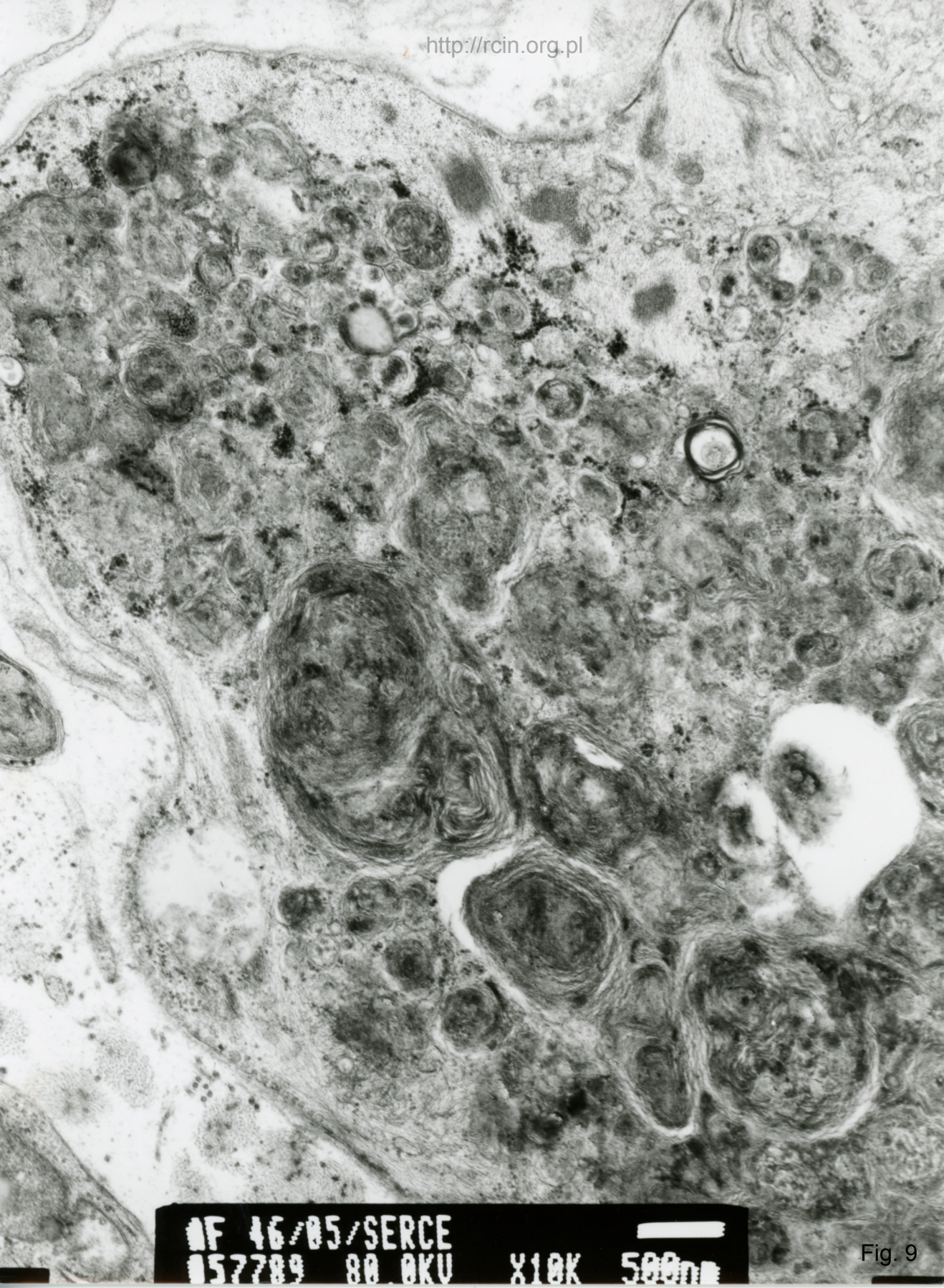
Fig. 7





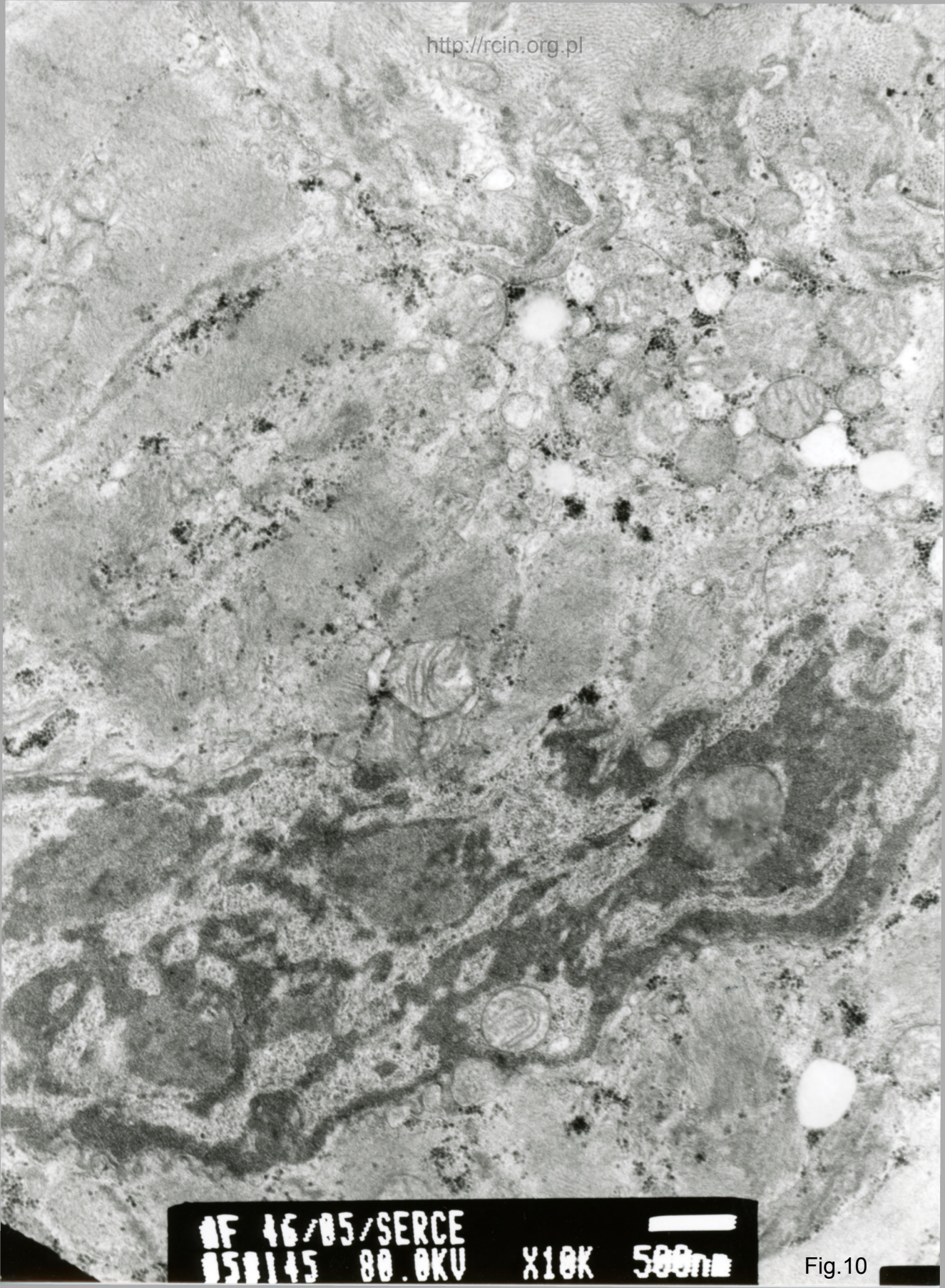
MF 46/05/SERCER  
050333 80.0KV X12K 500nm

Fig. 8



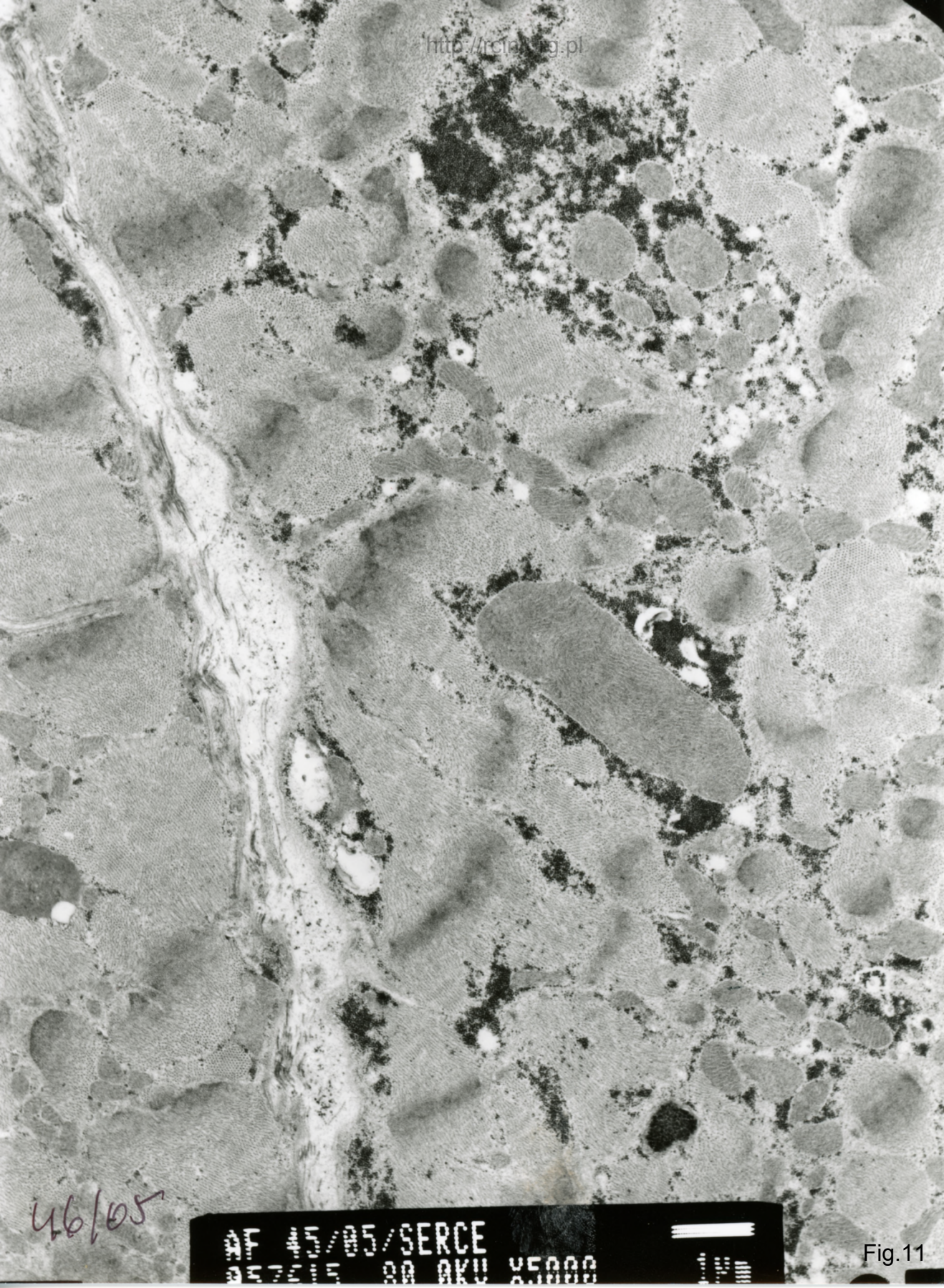
MF 46/05/SERCE  
057709 80.0KV X10K 500nm

Fig. 9



WF 46/05/SERCE  
050145 80.0KV X10K 500nm

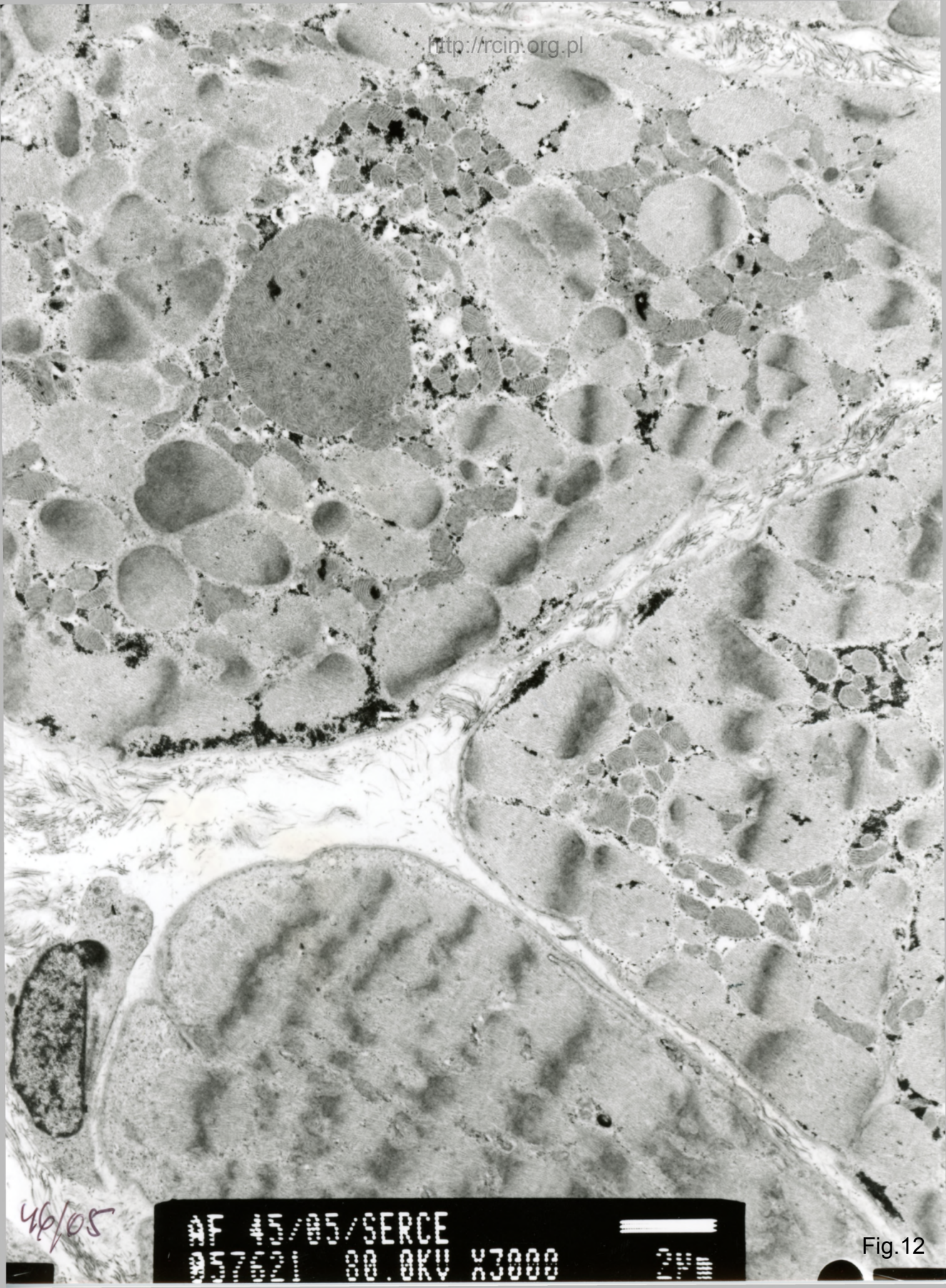
Fig.10



46/05

AF 45/05/SERCE  
057505 00 0KV X5000

Fig. 11



46/05

46/05/SERCE  
00.0KV X3000

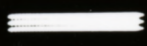
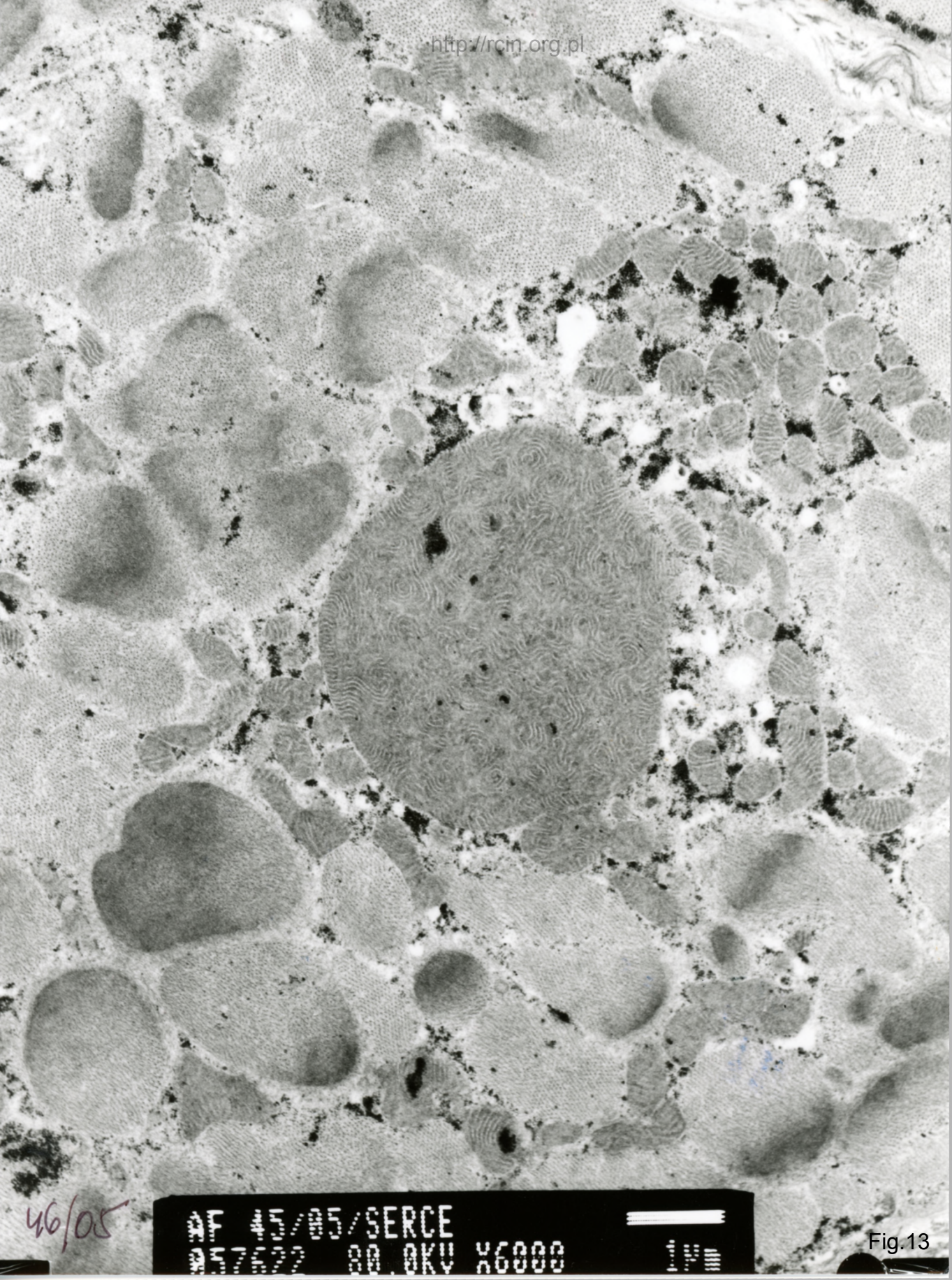


Fig.12



46/05

AF #5/95/SERCE  
00.0KV X6000

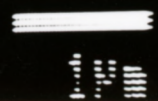
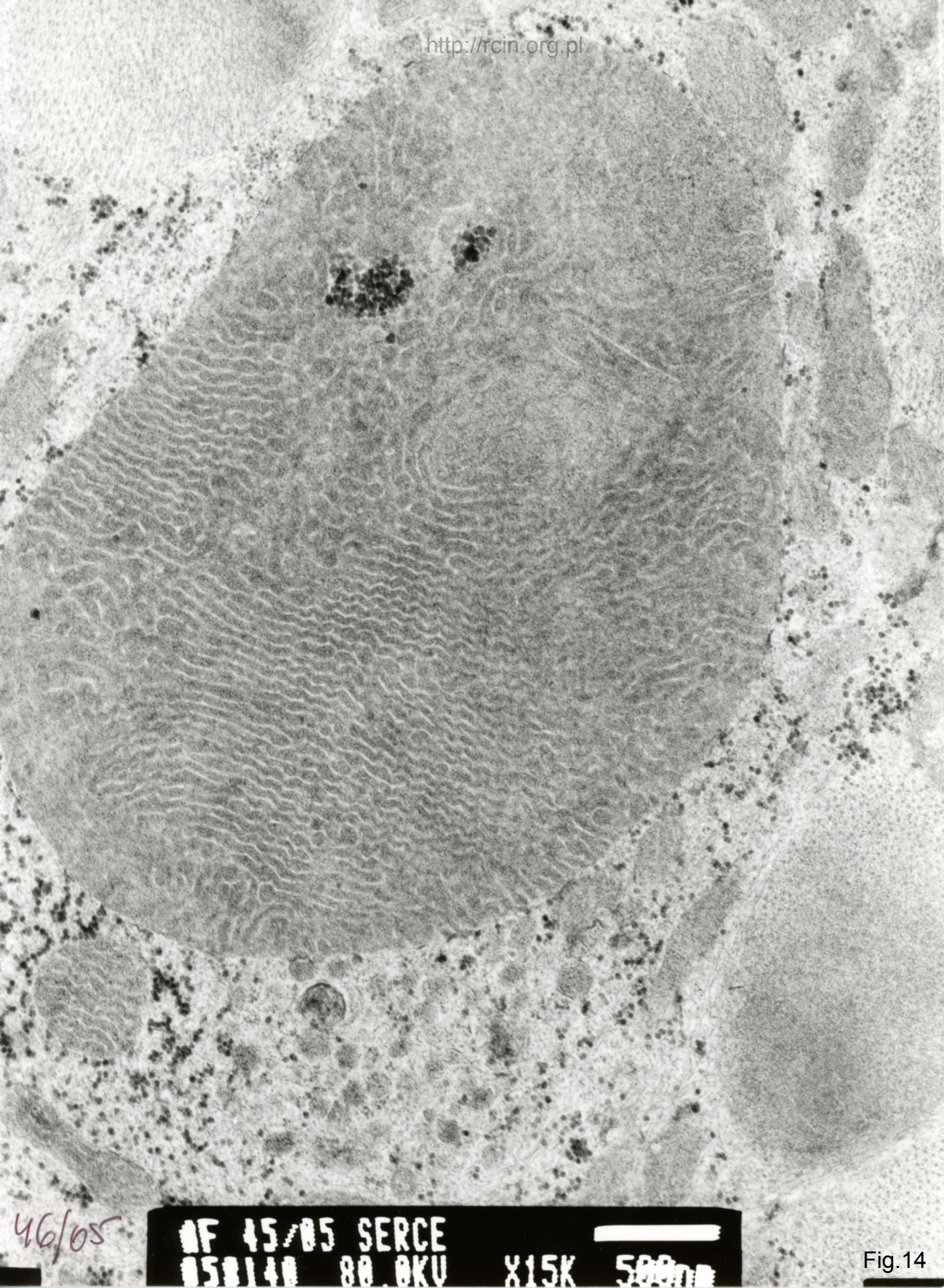


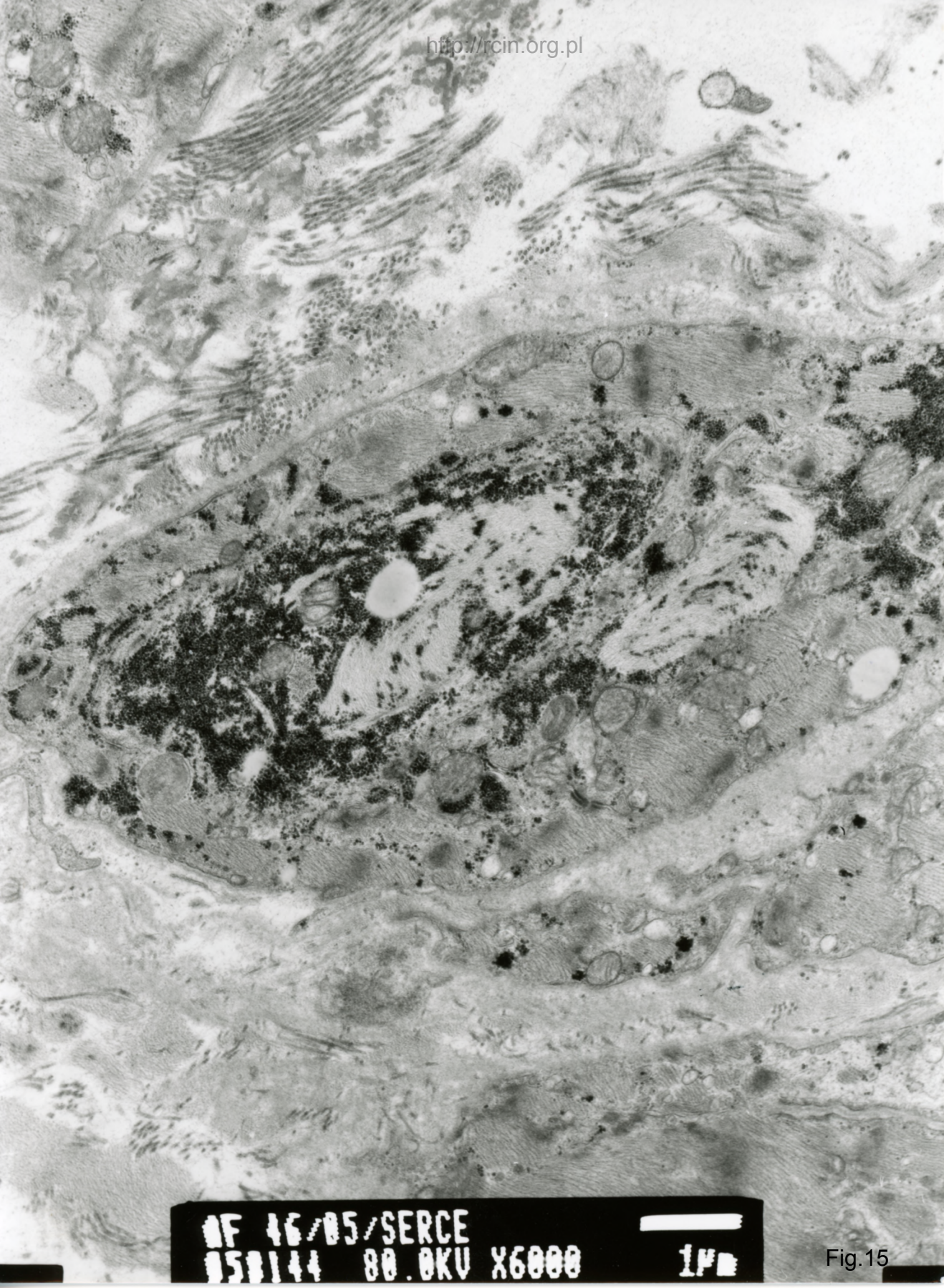
Fig.13



46/05

MF 45/05 SERCE  
050140 80.0KV X15K 500nm

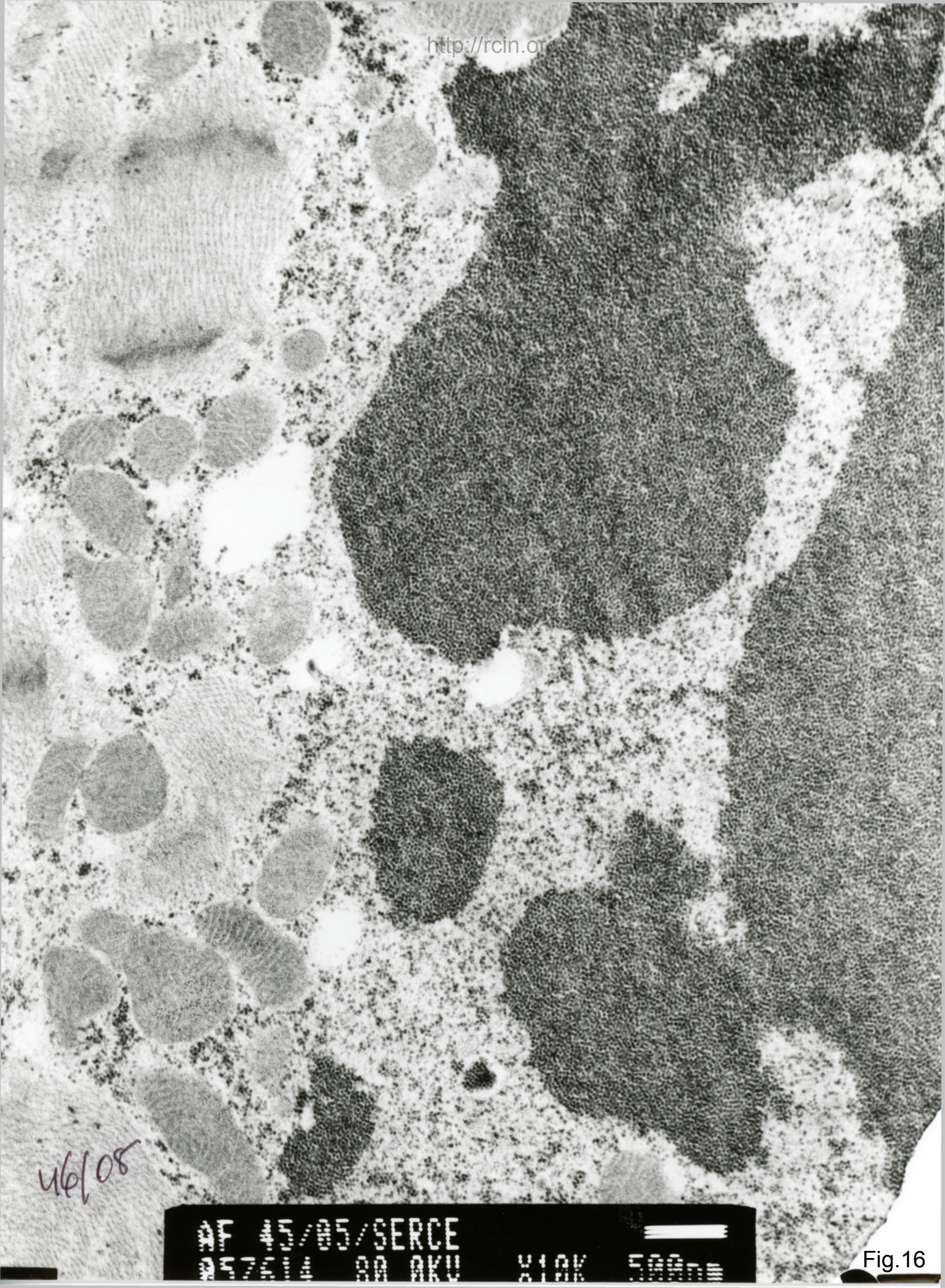
Fig.14



MF 46/05/SERCE  
050144 80.0KV X6000 1µm

Fig.15

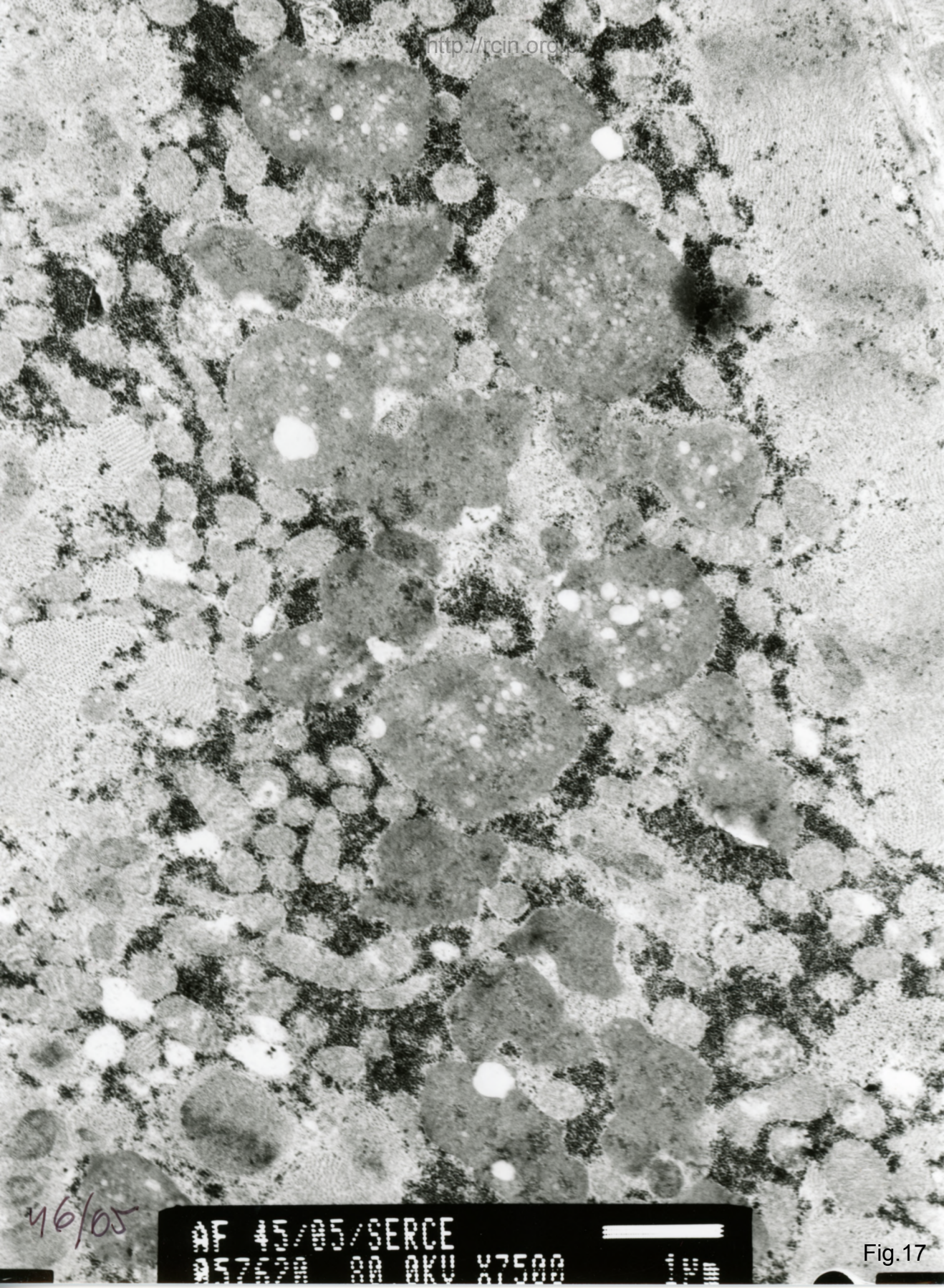




4/6/08

AF #5/05/SERCE  
#37014 80 AKU 810K 500nm

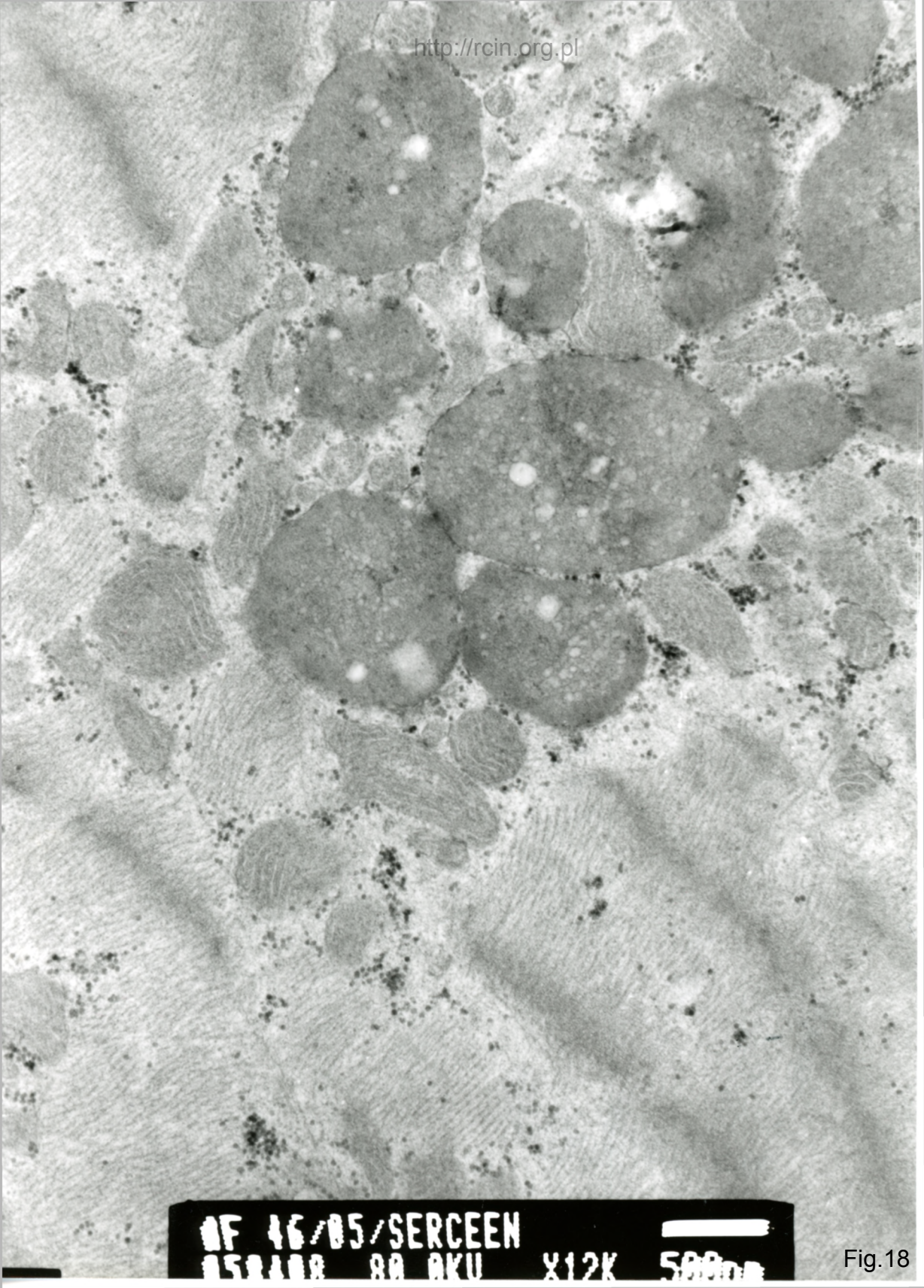
Fig. 16



46/05

AF 45/05/SERCE  
057620 00 0KV 87500

Fig.17



WF 46/05/SERCEEN  
05R100 80 0KU X12K 500nm

Fig.18

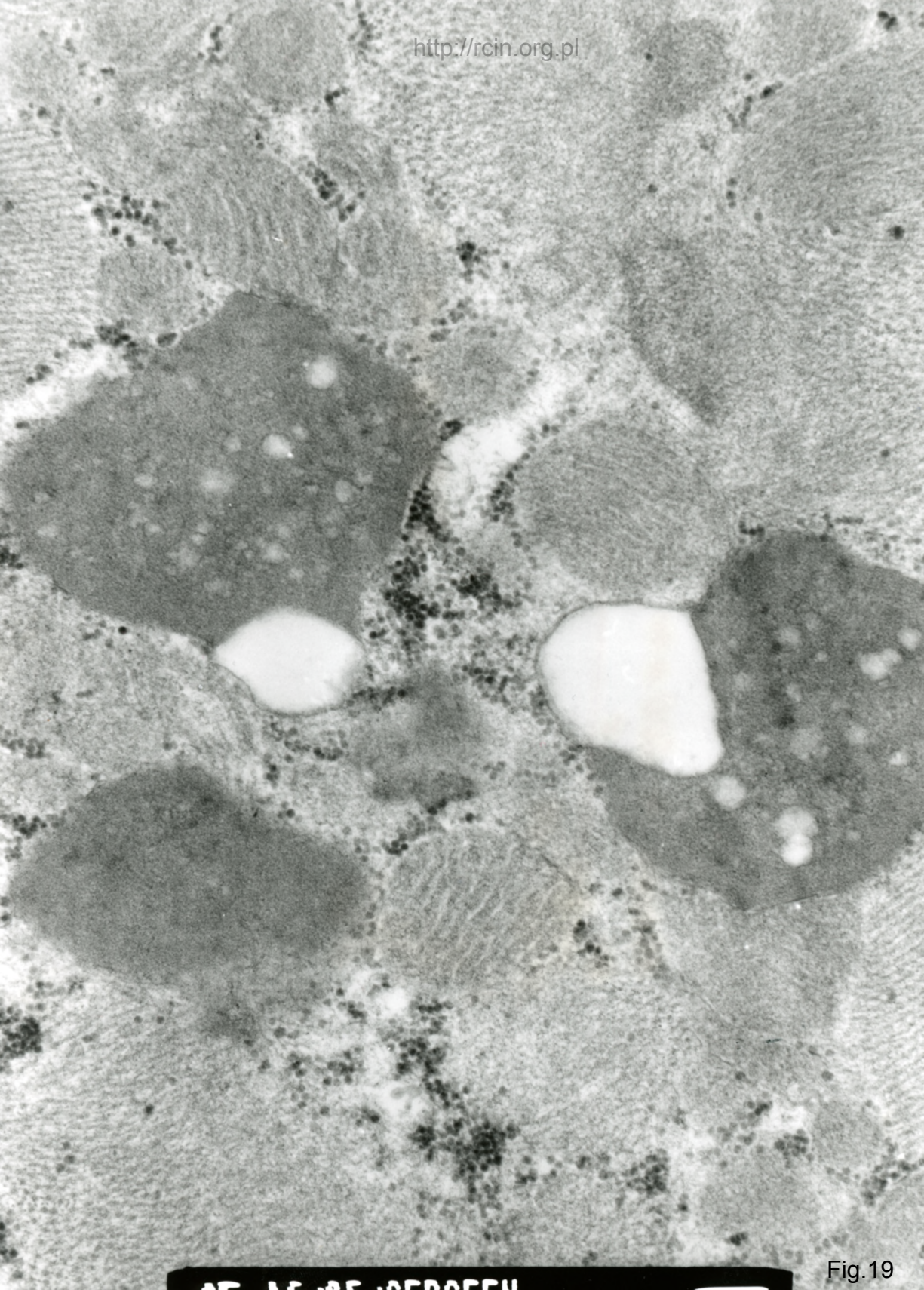


Fig.19

AS 15 25 2005