

Handwritten notes and numbers: 'Nun...', '90', 'C. 155/53', 'P.A.N.', 'Blatt 8. C. 155/53'

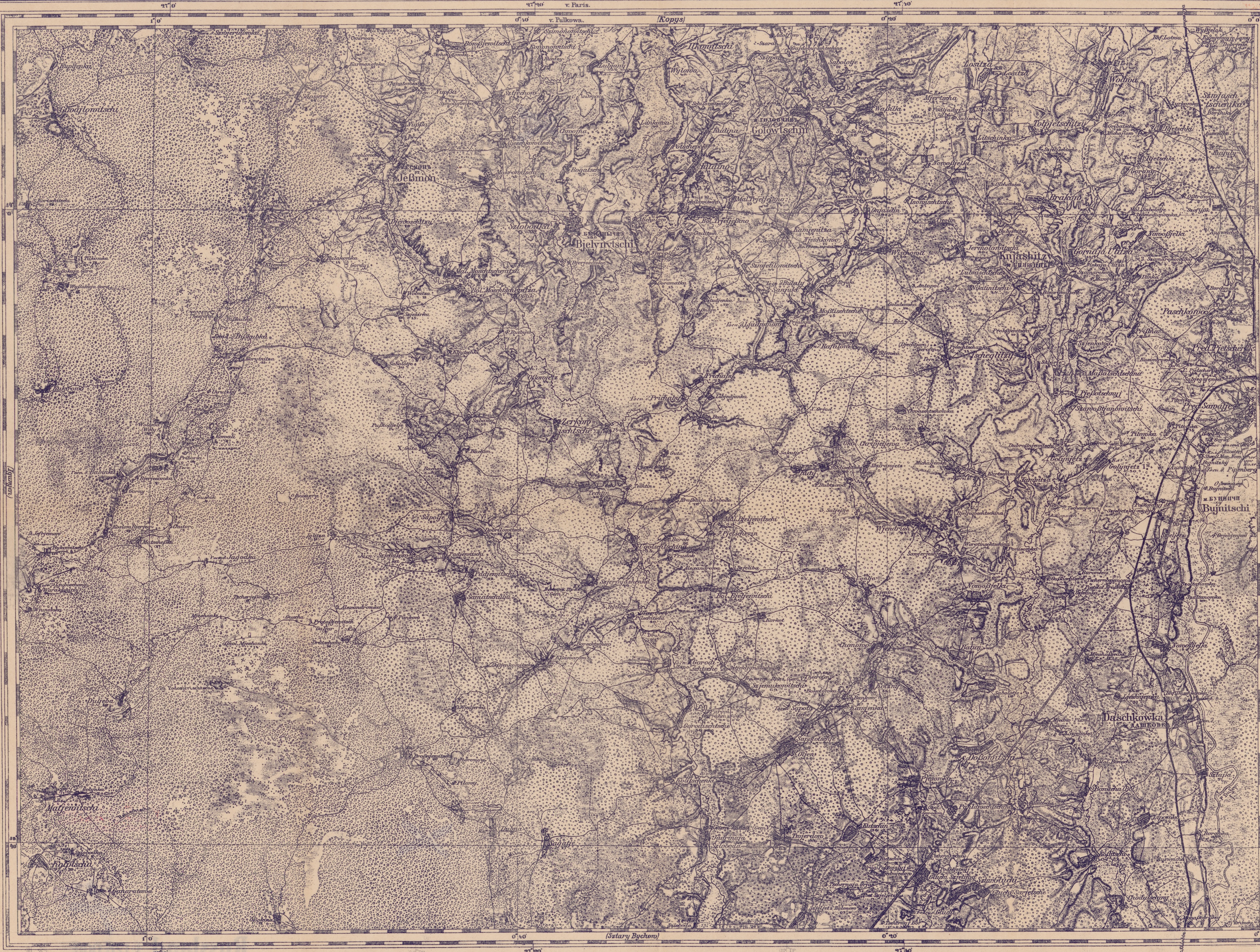
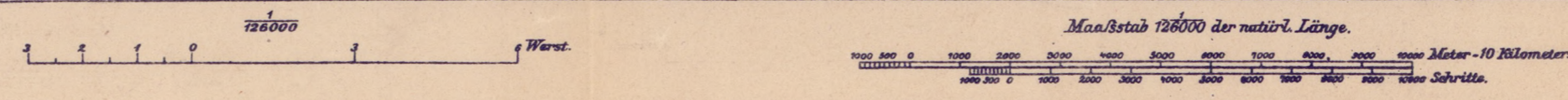


Table of Cyrillic letters and their corresponding Latin transliterations. Includes letters like А, Б, В, Г, Д, Е, Ж, З, И, К, Л, М, Н, О, П, Р, С, Ш, Щ, Ъ, Ы, Э, Ю, Я and their Latin equivalents.

Second table of Cyrillic letters and their corresponding Latin transliterations, similar to the first table but with different letter combinations.

Revised i. d. Kartogr. Abt. d. Stabes Generalstabes d. Armee 1914

Höhensahlen (Regelm.) in Metern à 2,0 Meter.



Druckjahr 1915.

Legend for transportation symbols: Eisenbahn (railway), Chaussee mit und ohne Bäume (road with and without trees), Poststrasse mit und ohne Bäume (post road with and without trees), Landstrasse mit und ohne Gräben (country road with and without ditches), Landstrasse ohne Gräben (country road without ditches), gerodn. Fuhrweg (cleared path), Russroeg (Russian road), Graben (ditch), Grenzlinie (border line).

